



User Manual

Xtreme N® Gigabit Router

DIR-655

Preface

D-Link reserves the right to revise this publication and to make changes in the content hereof without obligation to notify any person or organization of such revisions or changes.

Manual Revisions

Revision	Date	Description
2.0	March 3, 2010	• New Revision

Trademarks

D-Link and the D-Link logo are trademarks or registered trademarks of D-Link Corporation or its subsidiaries in the United States or other countries. All other company or product names mentioned herein are trademarks or registered trademarks of their respective companies.

Copyright © 2008-2010 by D-Link Canada, Inc.





All rights reserved. This publication may not be reproduced, in whole or in part, without prior expressed written permission from D-Link Canada, Inc.

Table of Contents

Preface.....	i	Static (assigned by ISP).....	19
Manual Revisions.....	i	Wireless Settings	20
Trademarks	i	Network Settings.....	21
Product Overview	1	DHCP Server Settings.....	22
Package Contents	1	DHCP Reservation	23
System Requirements.....	2	USB Settings.....	24
Introduction	3	Virtual Server	25
Features	4	Port Forwarding.....	27
Hardware Overview.....	5	Application Rules	28
Connections	5	QoS Engine	29
LEDs	6	Network Filters	30
Installation	7	Access Control.....	31
Before you Begin	7	Access Control Wizard.....	31
Wireless Installation Considerations	8	Website Filters	34
Getting Started	9	Inbound Filters	35
Configuration.....	10	Firewall Settings	36
Web-based Configuration Utility.....	10	Application Level Gateway Configuration	37
Setup Wizard.....	11	Routing	38
Manual Configuration	15	Advanced Wireless Settings	39
Dynamic (Cable).....	15	WISH Settings.....	40
Internet Setup	16	Wi-Fi Protected Setup (WPS).....	41
PPPoE (DSL)	16	Advanced Network Settings	42
PPTP	17	UPnP.....	42
L2TP.....	18	Internet Ping Block.....	42
		Internet Port Speed	42
		Multicast Streams.....	42

Guest Zone	43	Support.....	72
IPv6.....	44	Wireless Security	73
Link-Local Connectivity.....	44	What is WPA?	73
Static IPv6 (Stateful).....	45	Wireless Security Setup Wizard	74
Static IPv6 (Stateless)	46	Configure WPA-Personal (PSK)	76
DHCPv6 (Stateful).....	47	Configure WPA-Enterprise (RADIUS)	77
DHCPv6 (Stateless).....	48	Connect to a Wireless Network.....	79
IPv6 over PPPoE (Stateful)	49	Using Windows® 7	79
IPv6 over PPPoE (Stateless)	51	Using Windows Vista®	82
6 to 4 Tunneling (Stateful)	53	Configure Wireless Security	83
6 to 4 Tunneling (Stateless).....	54	Using Windows® XP	85
IPv6 in IPv4 Tunneling (Stateful)	55	Configure WPA-PSK	86
IPv6 in IPv4 Tunneling (Stateless)	56	Troubleshooting	88
Stateless Autoconfiguration (Stateless)	57	Wireless Basics	92
Stateless Autoconfiguration (Stateful).....	58	Tips	94
Administrator Settings.....	59	Wireless Modes	95
Time Settings.....	60	Networking Basics	96
SysLog	61	Check your IP address.....	96
Email Settings.....	62	Technical Specifications	98
System Settings	63	Contacting Technical Support	99
Update Firmware.....	64	Warranty.....	100
DDNS	65	Registration	106
System Check	66		
Schedules.....	67		
Device Information.....	68		
Log.....	69		
Stats	70		
Active Sessions.....	70		
Wireless.....	71		

Package Contents

D-Link DIR-655 Xtreme N™ Router with 3 Detachable Antennas	
Power Adapter	
CAT 5 Ethernet Cable	
CD-ROM	

Note: Using a power supply with a different voltage rating than the one included with the DIR-655 will cause damage and void the warranty.

System Requirements

Network Requirements	<ul style="list-style-type: none">• An Ethernet-based Cable or DSL modem• IEEE 802.11n or 802.11g wireless clients• 10/100/1000 Ethernet
Web-based Configuration Utility Requirements	<p>Computer with the following:</p> <ul style="list-style-type: none">• Windows®, Macintosh, or Linux-based operating system• An installed Ethernet adapter <p>Browser Requirements:</p> <ul style="list-style-type: none">• Internet Explorer 6.0 or higher• Mozilla 1.7.12 or higher• Firefox 1.5 or higher• Safari 1.0 or higher (with Java 1.3.1 or higher) <p>Windows® Users: Make sure you have the latest version of Java installed. Visit www.java.com to download the latest version.</p>
CD Installation Wizard Requirements	<p>Computer with the following:</p> <ul style="list-style-type: none">• Windows 7, Vista®, or XP with Service Pack 2• An installed Ethernet adapter• CD-ROM drive

Introduction

TOTAL PERFORMANCE

Combines award winning router features and 802.11n wireless technology to provide the best wireless performance.

TOTAL SECURITY

The most complete set of security features including Active Firewall and WPA2™ to protect your network against outside intruders.

TOTAL COVERAGE

Provides greater wireless signal rates even at farther distances for best-in-class Whole Home Coverage.

ULTIMATE PERFORMANCE

The D-Link Xtreme N™ Router (DIR-655) is a 802.11n compliant device that delivers real world performance of up to 650% faster than an 802.11g wireless connection (also faster than a 100Mbps wired Ethernet connection). Create a secure wireless network to share photos, files, music, video, printers, and network storage throughout your home. Connect the Xtreme N™ Router to a cable or DSL modem and share your high-speed Internet access with everyone on the network. In addition, this Router includes a Quality of Service (QoS) engine that keeps digital phone calls (VoIP) and online gaming smooth and responsive, providing a better Internet experience.

EXTENDED WHOLE HOME COVERAGE

Powered by Xtreme N™ technology, this high performance router provides superior Whole Home Coverage while reducing dead spots. The Xtreme N™ Router is designed for use in bigger homes and for users who demand higher performance networking. Add a Xtreme N™ notebook or desktop adapter and stay connected to your network from virtually anywhere in your home.

TOTAL NETWORK SECURITY

The Xtreme N™ Router supports all of the latest wireless security features to prevent unauthorized access, be it from over the wireless network or from the Internet. Support for WPA standards ensure that you'll be able to use the best possible encryption method, regardless of your client devices. In addition, this Xtreme N™ Router utilizes dual active firewalls (SPI and NAT) to prevent potential attacks from across the Internet.

* Maximum wireless signal rate derived from IEEE Standard 802.11g and 802.11n specifications. Actual data throughput will vary. Network conditions and environmental factors, including volume of network traffic, building materials and construction, and network overhead, lower actual data throughput rate. Environmental conditions will adversely affect wireless signal range.

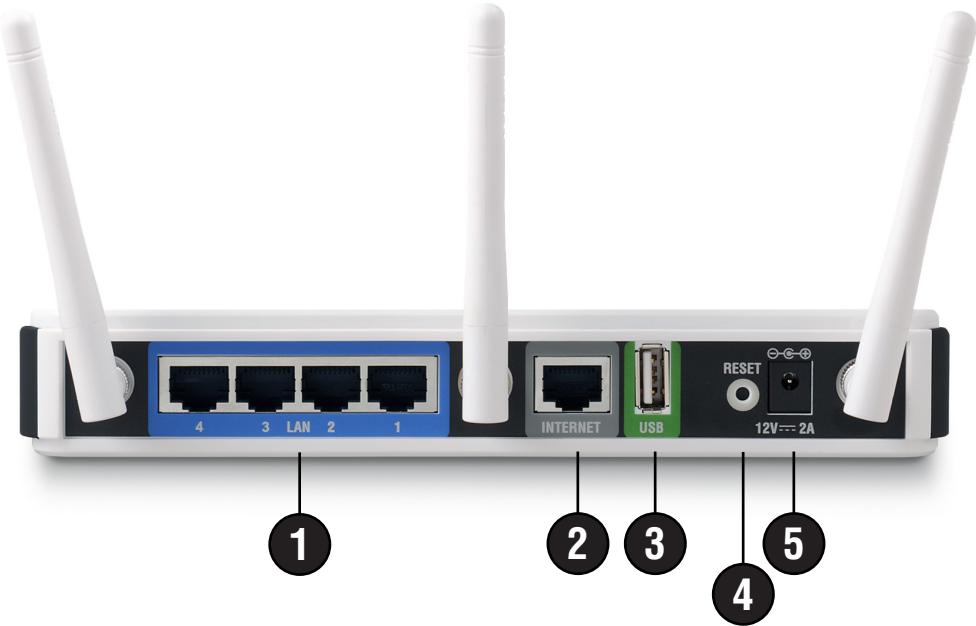
Features

- **Faster Wireless Networking** - The DIR-655 provides up to 300Mbps* wireless connection with other 802.11n wireless clients. This capability allows users to participate in real-time activities online, such as video streaming, online gaming, and real-time audio. The performance of this 802.11n wireless router gives you the freedom of wireless networking at speeds 650% faster than 802.11g.
- **Compatible with 802.11g Devices** - The DIR-655 is still fully compatible with the IEEE 802.11g standard, so it can connect with existing 802.11g PCI, USB and Cardbus adapters.
- **Advanced Firewall Features** - The Web-based user interface displays a number of advanced network management features including:
 - **Content Filtering** - Easily applied content filtering based on MAC Address, URL, and/or Domain Name.
 - **Filter Scheduling** - These filters can be scheduled to be active on certain days or for a duration of hours or minutes.
 - **Secure Multiple/Concurrent Sessions** - The DIR-655 can pass through VPN sessions. It supports multiple and concurrent IPSec and PPTP sessions, so users behind the DIR-655 can securely access corporate networks.
- **User-friendly Setup Wizard** - Through its easy-to-use Web-based user interface, the DIR-655 lets you control what information is accessible to those on the wireless network, whether from the Internet or from your company's server. Configure your router to your specific settings within minutes.

* Maximum wireless signal rate derived from IEEE Standard 802.11g and 802.11n specifications. Actual data throughput will vary. Network conditions and environmental factors, including volume of network traffic, building materials and construction, and network overhead, lower actual data throughput rate. Environmental conditions will adversely affect wireless signal range.

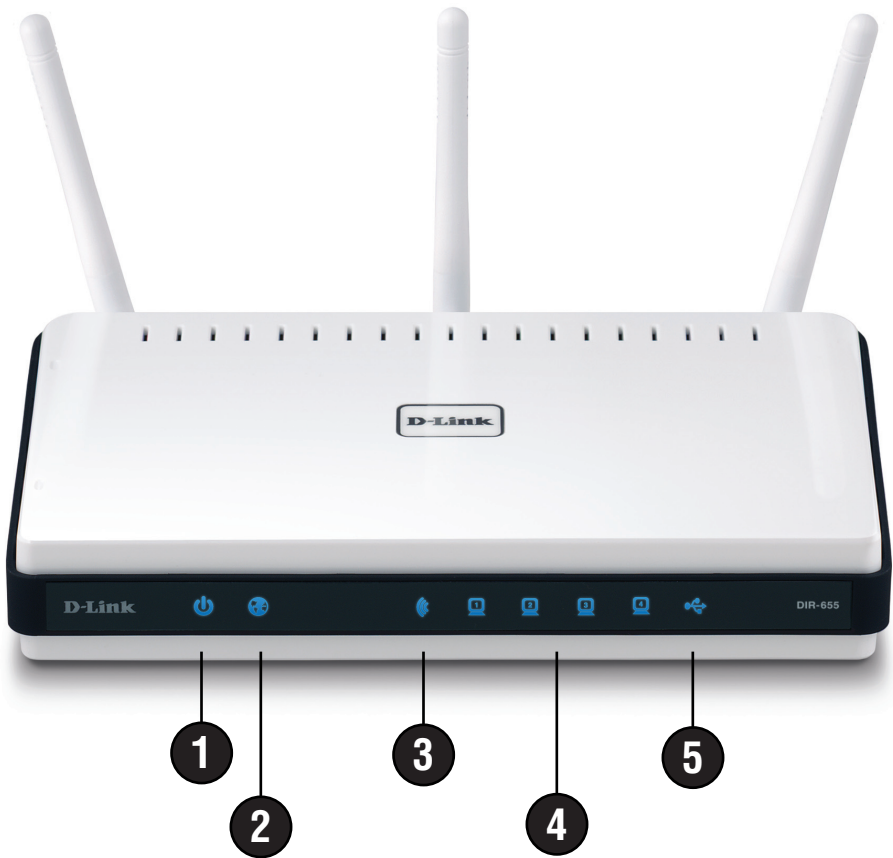
Hardware Overview

Connections



1	LAN Ports (1-4)	Connect Ethernet devices such as computers, switches, and hubs.
2	Internet Port	The auto MDI/MDIX Internet port is the connection for the Ethernet cable to the cable or DSL modem.
3	USB	Connect a USB 1.1 or 2.0 flash drive to configure the wireless settings using WCN.
4	Reset	Pressing the Reset button restores the router to its original factory default settings.
5	Power Receptor	Receptor for the supplied power adapter.

LEDs



1	Power LED	A solid light indicates a proper connection to the power supply.
2	Internet LED	A solid light indicates connection on the Internet port. This LED blinks during data transmission. A solid blue light indicates that there is an Internet connection, an orange light indicates that there is none.
3	WLAN LED	A solid light indicates that the wireless segment is ready. This LED blinks during wireless data transmission.
4	Local Network's LED	A solid light indicates a connection to an Ethernet-enabled computer on ports 1-4. This LED blinks during data transmission.
5	WCN LED	Insert a USB flash drive with WCN information. The LED will blink 3 times if it successfully transfers the wireless settings.

Installation

This section will walk you through the installation process. Placement of the router is very important. Do not place the router in an enclosed area such as a closet, cabinet, or in the attic or garage.

Before you Begin

Please configure the router with the computer that was last connected directly to your modem. Also, you can only use the Ethernet port on your modem. If you were using the USB connection before using the router, then you must turn off your modem, disconnect the USB cable and connect an Ethernet cable to the Internet port on the router, and then turn the modem back on. In some cases, you may need to call your ISP to change connection types (USB to Ethernet).

If you have DSL and are connecting via PPPoE, make sure you disable or uninstall any PPPoE software such as WinPoet, Broadjump, or Enternet 300 from your computer or you will not be able to connect to the Internet.

Wireless Installation Considerations

The D-Link wireless router lets you access your network using a wireless connection from virtually anywhere within the operating range of your wireless network. Keep in mind that the number, thickness and location of walls, ceilings, or other objects that the wireless signals must pass through, may limit the range. Typical ranges vary depending on the types of materials and background RF (radio frequency) noise in your home or business. The key to maximizing wireless range is to follow these basic guidelines:

1. Keep the number of walls and ceilings between the D-Link router and other network devices to a minimum - each wall or ceiling can reduce your adapter's range from 3-90 feet (1-30 meters.) Position your devices so that the number of walls or ceilings is minimized.
2. Be aware of the direct line between network devices. A wall that is 1.5 feet thick (.5 meters), at a 45-degree angle appears to be almost 3 feet (1 meter) thick. At a 2-degree angle it looks over 42 feet (14 meters) thick! Position devices so that the signal will travel straight through a wall or ceiling (instead of at an angle) for better reception.
3. Building Materials make a difference. A solid metal door or aluminum studs may have a negative effect on range. Try to position access points, wireless routers, and computers so that the signal passes through drywall or open doorways. Materials and objects such as glass, steel, metal, walls with insulation, water (fish tanks), mirrors, file cabinets, brick, and concrete will degrade your wireless signal.
4. Keep your product away (at least 3-6 feet or 1-2 meters) from electrical devices or appliances that generate RF noise.
5. If you are using 2.4GHz cordless phones or X-10 (wireless products such as ceiling fans, lights, and home security systems), your wireless connection may degrade dramatically or drop completely. Make sure your 2.4GHz phone base is as far away from your wireless devices as possible. The base transmits a signal even if the phone is not in use.

Getting Started

The DIR-655 includes a Quick Router Setup Wizard CD. Follow the simple steps below to run the Setup Wizard to guide you quickly through the installation process.

Insert the **Quick Router Setup Wizard CD** in the CD-ROM drive. The step-by-step instructions that follow are shown in Windows® XP. The steps and screens are similar for the other Windows operating systems.

If the CD Autorun function does not automatically start on your computer, go to **Start > Run**. In the run box type “**D:\autorun.exe**” (where **D:** represents the drive letter of your CD-ROM drive).

When the autorun screen appears, click **Install**.



Note: It is recommended to write down the SSID and Security Key, followed by the login password on the provided CD holder.

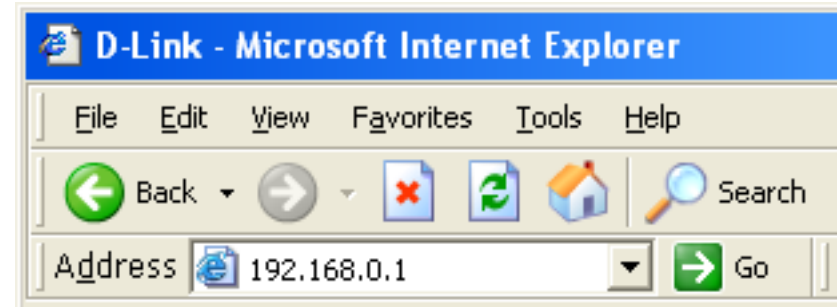
Configuration

This section will show you how to configure your new D-Link wireless router using the web-based configuration utility.

Web-based Configuration Utility

To access the configuration utility, open a web-browser such as Internet Explorer and enter the IP address of the router (192.168.0.1).

You may also connect using the NetBIOS name in the address bar (**http://dlinkrouter**).



Select **Admin** from the drop-down menu and then enter your password. The password is left blank by default.

If you get a **Page Cannot be Displayed** error, please refer to the **Troubleshooting** section for assistance.

A screenshot of the D-Link router's login page. The page has an orange header with the word "LOGIN". Below the header, it says "Log in to the router". There are two input fields: "User Name" with a dropdown menu showing "Admin" and "Password" with a text box. Below these fields is a "Log In" button.

Setup Wizard

You may click **Setup Wizard** to quickly configure your router.

If you want to enter your settings without running the wizard, click **Manual Configuration** and skip to page 15.

Click **Launch Internet Connection Setup Wizard** to begin.

If you want to configure your wireless settings, click **Launch Wireless Security Setup Wizard** and skip to page 74.

INTERNET CONNECTION

There are two ways to set up your Internet connection: you can use the Web-based Internet Connection Setup Wizard, or you can manually configure the connection.

INTERNET CONNECTION WIZARD

If you would like to utilize our easy to use Web-based Wizards to assist you in connecting your new D-Link Systems Router to the Internet, click on the button below.

Internet Connection Setup Wizard

Note: Before launching the wizard, please make sure you have followed all steps outlined in the Quick Installation Guide included in the package.

MANUAL INTERNET CONNECTION OPTIONS

If you would like to configure the Internet settings of your new D-Link Systems Router manually, then click on the button below.

Manual Internet Connection Setup

WIRELESS SETTINGS

The following Web-based wizards are designed to assist you in your wireless network setup and wireless device connection.

Before launching these wizards, please make sure you have followed all steps outlined in the Quick Installation Guide included in the package.

WIRELESS NETWORK SETUP WIZARD

This wizard is designed to assist you in your wireless network setup. It will guide you through step-by-step instructions on how to set up your wireless network and how to make it secure.

Wireless Connection Setup Wizard

Note: Some changes made using this Setup Wizard may require you to change some settings on your wireless client adapters so they can still connect to the D-Link Router.

ADD WIRELESS DEVICE WITH WPS (WI-FI PROTECTED SETUP) WIZARD

This wizard is designed to assist you in connecting your wireless device to your router. It will guide you through step-by-step instructions on how to get your wireless device connected. Click the button below to begin.

Add Wireless Device with WPS

MANUAL WIRELESS NETWORK SETUP

If your wireless network is already set up with Wi-Fi Protected Setup, manual configuration of the wireless network will destroy the existing wireless network. If you would like to configure the wireless settings of your new D-Link Systems Router manually, then click on the Manual Wireless Network Setup button below.

Manual Wireless Connection Setup

Click **Next** to continue.

Create a new password and then click **Next** to continue.

Select your time zone from the drop-down menu and then click **Next** to continue.

Select the type of Internet connection you use and then click **Next** to continue.

WELCOME TO THE D-LINK SETUP WIZARD

This wizard will guide you through a step-by-step process to configure your new D-Link router and connect to the Internet.

- Step 1: Set your Password
- Step 2: Select your Time Zone
- Step 3: Configure your Internet Connection
- Step 4: Save Settings and Connect

Prev Next Cancel Connect

STEP 1: SET YOUR PASSWORD

By default, your new D-Link Router does not have a password configured for administrator access to the Web-based configuration pages. To secure your new networking device, please set and verify a password below:

Password :

Verify Password :

Prev Next Cancel Connect

STEP 2: SELECT YOUR TIME ZONE

Select the appropriate time zone for your location. This information is required to configure the time-based options for the router.

(GMT-08:00) Pacific Time (US/Canada), Tijuana

Prev Next Cancel Connect

STEP 3: CONFIGURE YOUR INTERNET CONNECTION

Your Internet Connection could not be detected, please select your Internet Service Provider (ISP) from the list below. If your ISP is not listed; select the "Not Listed or Don't Know" option to manually configure your connection.

Not Listed or Don't Know

If your Internet Service Provider was not listed or you don't know who it is, please select the Internet connection type below:

☐ DHCP Connection (Dynamic IP Address)
Choose this if your Internet connection automatically provides you with an IP Address. Most Cable Modems use this type of connection.

☒ Username / Password Connection (PPPoE)
Choose this option if your Internet connection requires a username and password to get online. Most DSL modems use this connection type of connection.

☐ Username / Password Connection (PPTP)
PPTP client.

☐ Username / Password Connection (L2TP)
L2TP client.

☐ Static IP Address Connection
Choose this option if your Internet Setup Provider provided you with IP Address information that has to be manually configured.

Prev Next Cancel Connect

If you selected Dynamic, you may need to enter the MAC address of the computer that was last connected directly to your modem. If you are currently using that computer, click **Clone Your PC's MAC Address** and then click **Next** to continue.

The Host Name is optional but may be required by some ISPs. The default host name is the device name of the Router and may be changed.

If you selected PPPoE, enter your PPPoE username and password. Click **Next** to continue.

Select **Static** if your ISP assigned you the IP address, subnet mask, gateway, and DNS server addresses.

Note: Make sure to remove your PPPoE software from your computer. The software is no longer needed and will not work through a router.

If you selected PPTP, enter your PPTP username and password. Click **Next** to continue.

DHCP CONNECTION (DYNAMIC IP ADDRESS)

To set up this connection, please make sure that you are connected to the D-Link Router with the PC that was originally connected to your broadband connection. If you are, then click the Clone MAC button to copy your computer's MAC Address to the D-Link Router.

MAC Address : 00:16:17:45:11:af (Optional)

Host Name :

Note: You may also need to provide a Host Name. If you do not have or know this information, please contact your ISP.

DNS SETTINGS

Primary DNS Address : 0.0.0.0
 Secondary DNS Address : 0.0.0.0

SET USERNAME AND PASSWORD CONNECTION (PPPOE)

To set up this connection you will need to have a Username and Password from your Internet Service Provider. If you do not have this information, please contact your ISP.

Address Mode : ☒ Dynamic IP ☐ Static IP
 IP Address & : 0.0.0.0
 User Name : d-link@sbcbglobal.net
 Password :
 Verify Password :
 Service Name : (Optional)

Note: You may also need to provide a Service Name. If you do not have or know this information, please contact your ISP.

DNS SETTINGS

Primary DNS Address : 0.0.0.0
 Secondary DNS Address : 0.0.0.0

SET USERNAME AND PASSWORD CONNECTION (PPTP)

To set up this connection you will need to have a Username and Password from your Internet Service Provider. You also need PPTP IP address. If you do not have this information, please contact your ISP.

Address Mode : ☒ Dynamic IP ☐ Static IP
 PPTP IP Address : 0.0.0.0
 PPTP Subnet Mask : 0.0.0.0
 PPTP Gateway IP Address : 0.0.0.0
 PPTP Server IP Address (may be same as gateway) :
 User Name :
 Password :
 Verify Password :

DNS SETTINGS

Primary DNS Address : 0.0.0.0
 Secondary DNS Address : 0.0.0.0

If you selected L2TP, enter your L2TP username and password. Click **Next** to continue.

SET USERNAME AND PASSWORD CONNECTION (L2TP)

To set up this connection you will need to have a Username and Password from your Internet Service Provider. You also need L2TP IP address. If you do not have this information, please contact your ISP.

Address Mode : ☒ Dynamic IP ☐ Static IP

L2TP IP Address :

L2TP Subnet Mask :

L2TP Gateway IP Address :

L2TP Server IP Address (may be same as gateway) :

User Name :

Password :

Verify Password :

DNS SETTINGS

Primary DNS Address :

Secondary DNS Address :

If you selected Static, enter your network settings supplied by your Internet provider. Click **Next** to continue.

SET STATIC IP ADDRESS CONNECTION

To set up this connection you will need to have a complete list of IP information provided by your Internet Service Provider. If you have a Static IP connection and do not have this information, please contact your ISP.

IP Address :

Subnet Mask :

Gateway Address :

DNS SETTINGS

Primary DNS Address :

Secondary DNS Address :

Click **Connect** to save your settings. Once the router is finished rebooting, click **Continue**. Please allow 1-2 minutes to connect.

Close your browser window and reopen it to test your Internet connection. It may take a few tries to initially connect to the Internet.

SETUP COMPLETE!

The Setup Wizard has completed. Click the Connect button to save your settings and restart the router.

Manual Configuration

Dynamic (Cable)

My Internet Connection: Select **Dynamic IP (DHCP)** to obtain IP Address information automatically from your ISP. Select this option if your ISP does not give you any IP numbers to use. This option is commonly used for cable modem services such as Comcast and Cox.

Enable Advanced DNS Service: Advanced Domain Name System (DNS) services enhances your Internet performance by getting you the information and web pages you are looking for faster and more reliably. In addition, it improves your overall Internet experience by correcting many common typo mistakes automatically, taking you where you intended to go and saving you valuable time.

Disclaimer: D-Link makes no warranty as to the availability, reliability, functionality and operation of the Advanced DNS service or its features.

Host Name: The Host Name is optional but may be required by some ISPs. Leave blank if you are not sure.

Use Unicasting: Check the box if you are having problems obtaining an IP address from your ISP.

Primary/Secondary DNS Server: Enter the Primary and secondary DNS server IP addresses assigned by your ISP. These addresses are usually obtained automatically from your ISP. Leave at 0.0.0.0 if you did not specifically receive these from your ISP.

MTU: Maximum Transmission Unit - you may need to change the MTU for optimal performance with your specific ISP. 1500 is the default MTU.

MAC Address: The default MAC Address is set to the Internet port's physical interface MAC address on the Broadband Router. It is not recommended that you change the default MAC address unless required by your ISP. You can use the **Clone Your PC's MAC Address** button to replace the Internet port's MAC address with the MAC address of your Ethernet card.

INTERNET CONNECTION TYPE	
Choose the mode to be used by the router to connect to the Internet.	
My Internet Connection is :	Dynamic IP (DHCP) ▼
ADVANCED DNS SERVICE	
Advanced DNS is a free security option that provides Anti-Phishing to protect your Internet connection from fraud and navigation improvements such as auto-correction of common URL typos.	
Enable Advanced DNS Service :	<input type="checkbox"/>
DYNAMIC IP (DHCP) INTERNET CONNECTION TYPE :	
Use this Internet connection type if your Internet Service Provider (ISP) didn't provide you with IP Address information and/or a username and password.	
Host Name :	<input type="text"/>
Use Unicasting :	<input checked="" type="checkbox"/> (compatibility for some DHCP Servers)
Primary DNS Address :	<input type="text" value="0.0.0.0"/>
Secondary DNS Address :	<input type="text" value="0.0.0.0"/>
MTU :	<input type="text" value="1500"/> (bytes) MTU default = 1500
MAC Address :	<input type="text" value="00:16:17:45:11:af"/>
<input type="button" value="Clone Your PC's MAC Address"/>	

Internet Setup

PPPoE (DSL)

Choose PPPoE (Point to Point Protocol over Ethernet) if your ISP uses a PPPoE connection. Your ISP will provide you with a username and password. This option is typically used for DSL services. Make sure to remove your PPPoE software from your computer. The software is no longer needed and will not work through a router.

My Internet Connection: Select **PPPoE (Username/Password)** from the drop-down menu.

Address Mode: Select **Static** if your ISP assigned you the IP address, subnet mask, gateway, and DNS server addresses. In most cases, select **Dynamic**.

IP Address: Enter the IP address (Static PPPoE only).

User Name: Enter your PPPoE user name.

Password: Enter your PPPoE password and then retype the password in the next box.

Service Name: Enter the ISP Service Name (optional).

Reconnection Mode: Select either **Always-on**, **On-Demand**, or **Manual**.

Maximum Idle Time: Enter the Primary and Secondary DNS Server Addresses (Static PPPoE only).

DNS Addresses: Enter a maximum idle time during which the Internet connection is maintained during inactivity. To disable this feature, enable Auto-reconnect.

MTU: Maximum Transmission Unit - you may need to change the MTU for optimal performance with your specific ISP. 1492 is the default MTU.

MAC Address: The default MAC Address is set to the Internet port's physical interface MAC address on the Broadband Router. It is not recommended that you change the default MAC address unless required by your ISP. You can use the **Clone Your PC's MAC Address** button to replace the Internet port's MAC address with the MAC address of your Ethernet card.

INTERNET CONNECTION TYPE

Choose the mode to be used by the router to connect to the Internet.

My Internet Connection is :
PPPoE (Username / Password)

ADVANCED DNS SERVICE

Advanced DNS is a free security option that provides Anti-Phishing to protect your Internet connection from fraud and navigation improvements such as auto-correction of common URL typos.

Enable Advanced DNS Service :
☐

PPPOE :

Enter the information provided by your Internet Service Provider (ISP).

Address Mode
Dynamic IP
Static IP

IP Address :
0.0.0.0

User Name :

Password :

Verify Password :

Service Name :
(optional)

Reconnect Mode :
Always on
On demand
Manual

Maximum Idle Time :
5
(minutes, 0=infinite)

Primary DNS Address :
0.0.0.0
(optional)

Secondary DNS Address :
0.0.0.0
(optional)

MTU :
1492
(bytes) MTU default = 1492

MAC Address :
00:16:17:45:11:af

Clone Your PC's MAC Address

PPTP

Choose PPTP (Point-to-Point-Tunneling Protocol) if your ISP uses a PPTP connection. Your ISP will provide you with a username and password. This option is typically used for DSL services.

Address Mode: Select **Static** if your ISP assigned you the IP address, subnet mask, gateway, and DNS server addresses. In most cases, select **Dynamic**.

PPTP IP Address: Enter the IP address (Static PPTP only).

PPTP Subnet Mask: Enter the Primary and Secondary DNS Server Addresses (Static PPTP only).

PPTP Gateway: Enter the Gateway IP Address provided by your ISP.

PPTP Server IP: Enter the Server IP provided by your ISP (optional).

Username: Enter your PPTP username.

Password: Enter your PPTP password and then retype the password in the next box.

Reconnect Mode: Select either **Always-on**, **On-Demand**, or **Manual**.

Maximum Idle Time: Enter a maximum idle time during which the Internet connection is maintained during inactivity. To disable this feature, enable Auto-reconnect.

DNS Servers: The DNS server information will be supplied by your ISP (Internet Service Provider.)

MTU: Maximum Transmission Unit - you may need to change the MTU for optimal performance with your specific ISP. 1400 is the default MTU.

MAC Address: The default MAC Address is set to the Internet port's physical interface MAC address on the Broadband Router. It is not recommended that you change the default MAC address unless required by your ISP. You can use the **Clone Your PC's MAC Address** button to replace the Internet port's MAC address with the MAC address of your Ethernet card.

INTERNET CONNECTION TYPE

Choose the mode to be used by the router to connect to the Internet.

My Internet Connection is : PPTP (Username / Password) ▼

ADVANCED DNS SERVICE

Advanced DNS is a free security option that provides Anti-Phishing to protect your Internet connection from fraud and navigation improvements such as auto-correction of common URL typos.

Enable Advanced DNS Service : ☐

PPTP :

Enter the information provided by your Internet Service Provider (ISP).

Address Mode ☒ Dynamic IP ☐ Static IP

PPTP IP Address :

PPTP Subnet Mask :

PPTP Gateway IP Address :

PPTP Server IP Address :

Username :

Password :

Verify Password :

Reconnect Mode : ☐ Always on ☒ On demand ☐ Manual

Maximum Idle Time : (minutes, 0=infinite)

Primary DNS Address :

Secondary DNS Address :

MTU : (bytes) MTU default = 1400

MAC Address :

L2TP

Choose L2TP (Layer 2 Tunneling Protocol) if your ISP uses a L2TP connection. Your ISP will provide you with a username and password. This option is typically used for DSL services.

Address Mode: Select **Static** if your ISP assigned you the IP address, subnet mask, gateway, and DNS server addresses. In most cases, select **Dynamic**.

L2TP IP Address: Enter the L2TP IP address supplied by your ISP (Static only).

L2TP Subnet Mask: Enter the Subnet Mask supplied by your ISP (Static only).

L2TP Gateway: Enter the Gateway IP Address provided by your ISP.

L2TP Server IP: Enter the Server IP provided by your ISP (optional).

Username: Enter your L2TP username.

Password: Enter your L2TP password and then retype the password in the next box.

Reconnect Mode: Select either **Always-on**, **On-Demand**, or **Manual**.

Maximum Idle Time: Enter a maximum idle time during which the Internet connection is maintained during inactivity. To disable this feature, enable Auto-reconnect.

DNS Servers: Enter the Primary and Secondary DNS Server Addresses (Static L2TP only).

MTU: Maximum Transmission Unit - you may need to change the MTU for optimal performance with your specific ISP. 1400 is the default MTU.

Clone MAC Address: The default MAC Address is set to the Internet port's physical interface MAC address on the Broadband Router. It is not recommended that you change the default MAC address unless required by your ISP. You can use the **Clone Your PC's MAC Address** button to replace the Internet port's MAC address with the MAC address of your Ethernet card.

INTERNET CONNECTION TYPE

Choose the mode to be used by the router to connect to the Internet.

My Internet Connection is : L2TP (Username / Password)

ADVANCED DNS SERVICE

Advanced DNS is a free security option that provides Anti-Phishing to protect your Internet connection from fraud and navigation improvements such as auto-correction of common URL typos.

Enable Advanced DNS Service :

L2TP :

Enter the information provided by your Internet Service Provider (ISP).

Address Mode
Dynamic IP
Static IP

L2TP IP Address : 0.0.0.0

L2TP Subnet Mask : 0.0.0.0

L2TP Gateway IP Address : 0.0.0.0

L2TP Server IP Address :

Username :

Password :

Verify Password :

Reconnect Mode :
Always
On demand
Manual

Maximum Idle Time : 5 (minutes, 0=infinite)

Primary DNS Address : 0.0.0.0

Secondary DNS Address : 0.0.0.0

MTU : 1400 (bytes) MTU default = 1400

MAC Address : 00:16:17:45:11:af

Clone Your PC's MAC Address

Static (assigned by ISP)

Select Static IP Address if all the Internet port's IP information is provided to you by your ISP. You will need to enter in the IP address, subnet mask, gateway address, and DNS address(es) provided to you by your ISP. Each IP address entered in the fields must be in the appropriate IP form, which are four octets separated by a dot (x.x.x.x). The Router will not accept the IP address if it is not in this format.

IP Address: Enter the IP address assigned by your ISP.

Subnet Mask: Enter the Subnet Mask assigned by your ISP.

Default Gateway: Enter the Gateway assigned by your ISP.

DNS Servers: The DNS server information will be supplied by your ISP (Internet Service Provider.)

MTU: Maximum Transmission Unit - you may need to change the MTU for optimal performance with your specific ISP. 1500 is the default MTU.

MAC Address: The default MAC Address is set to the Internet port's physical interface MAC address on the Broadband Router. It is not recommended that you change the default MAC address unless required by your ISP. You can use the **Clone Your PC's MAC Address** button to replace the Internet port's MAC address with the MAC address of your Ethernet card.

WAN

Use this section to configure your Internet Connection type. There are several connection types to choose from: Static IP, DHCP, PPPoE, PPTP and L2TP. If you are unsure of your connection method, please contact your Internet Service Provider.

Note: If using the PPPoE option, you will need to remove or disable any PPPoE client software on your computers.

Save Settings
Don't Save Settings

INTERNET CONNECTION TYPE

Choose the mode to be used by the router to connect to the Internet.

My Internet Connection is : Static IP

ADVANCED DNS SERVICE

Advanced DNS is a free security option that provides Anti-Phishing to protect your Internet connection from fraud and navigation improvements such as auto-correction of common URL typos.

Enable Advanced DNS Service : ☐

STATIC IP ADDRESS INTERNET CONNECTION TYPE :

Enter the static address information provided by your Internet Service Provider (ISP).

IP Address :

0.0.0.0

Subnet Mask :

0.0.0.0

Default Gateway :

0.0.0.0

Primary DNS Server :

0.0.0.0

Secondary DNS Server :

0.0.0.0

MTU :

1500

(bytes) MTU default = 1500

MAC Address :

00:16:17:45:11:af

Clone Your PC's MAC Address

Wireless Settings

Enable Wireless: Check the box to enable the wireless function. If you do not want to use wireless, uncheck the box to disable all the wireless functions.

Schedule: The schedule of time when the wireless settings rules will be enabled. The schedule may be set to **Always**, which will allow the particular service to always be enabled. You can create your own times in the **Tools > Schedules** section.

Wireless Network Name: Service Set Identifier (SSID) is the name of your wireless network. Create a name using up to 32 characters. The SSID is case-sensitive.

Enable Auto Channel Scan: The **Auto Channel Scan** setting can be selected to allow the DIR-655 to choose the channel with the least amount of interference.

Wireless Channel: Indicates the channel setting for the DIR-655. By default the channel is set to 6. The Channel can be changed to fit the channel setting for an existing wireless network or to customize the wireless network. If you enable **Auto Channel Scan**, this option will be greyed out.

802.11 Mode: Select one of the following:
802.11g Only - Select if all of your wireless clients are 802.11g.
802.11n Only - Select only if all of your wireless clients are 802.11n.
Mixed 802.11n and 802.11g - Select if you are using a mix of 802.11n and 11g wireless clients.

Channel Width: Select the Channel Width:
Auto 20/40 - This is the default setting. Select if you are using both 802.11n and non-802.11n wireless devices.
20MHz - Select if you are not using any 802.11n wireless clients.
40MHz - Select if using only 802.11n wireless clients.

Transmission Rate: Select the transmit rate. It is strongly suggested to select **Best (Auto)** for best performance.

Visibility Status: Select **Invisible** if you do not want the SSID of your wireless network to be broadcasted by the DIR-655. If Invisible is selected, the SSID of the DIR-655 will not be seen by Site Survey utilities so your wireless clients will have to know the SSID of your DIR-655

WIRELESS NETWORK SETTINGS

Enable Wireless : ☒ Always New Schedule

Wireless Network Name : (Also called the SSID)

802.11 Mode : Mixed 802.11n, 802.11g and 802.11b

Enable Auto Channel Scan : ☒

Wireless Channel : 2.437 GHz - CH 6

Transmission Rate : Best (automatic)

Channel Width : 20 MHz

Visibility Status: ☒ Visible ☐ Invisible

WIRELESS SECURITY MODE

To protect your privacy you can configure wireless security features. This device supports three wireless security modes, including WEP, WPA-Personal, and WPA-Enterprise. WEP is the original wireless encryption standard. WPA provides a higher level of security. WPA-Personal does not require an authentication server. The WPA-Enterprise option requires an external RADIUS server.

Security Mode : None

Network Settings

This section will allow you to change the local network settings of the router and to configure the DHCP settings.

IP Address: Enter the IP address of the router. The default IP address is 192.168.0.1.

If you change the IP address, once you click **Apply**, you will need to enter the new IP address in your browser to get back into the configuration utility.

Subnet Mask: Enter the Subnet Mask. The default subnet mask is 255.255.255.0.

Local Domain: Enter the Domain name (Optional).

Enable DNS Relay: Uncheck the box to transfer the DNS server information from your ISP to your computers. If checked, your computers will use the router for a DNS server.

NETWORK SETTINGS

Use this section to configure the internal network settings of your router and also to configure the built-in DHCP Server to assign IP addresses to the computers on your network. The IP Address that is configured here is the IP Address that you use to access the Web-based management interface. If you change the IP Address here, you may need to adjust your PC's network settings to access the network again.

Save Settings

Don't Save Settings

ROUTER SETTINGS

Use this section to configure the internal network settings of your router. The IP Address that is configured here is the IP Address that you use to access the Web-based management interface. If you change the IP Address here, you may need to adjust your PC's network settings to access the network again.

Router IP Address :

Subnet Mask :

Device Name :

Local Domain Name :

Enable DNS Relay : ☒

DHCP Server Settings

DHCP stands for Dynamic Host Control Protocol. The DIR-655 has a built-in DHCP server. The DHCP Server will automatically assign an IP address to the computers on the LAN/private network. Be sure to set your computers to be DHCP clients by setting their TCP/IP settings to "Obtain an IP Address Automatically." When you turn your computers on, they will automatically load the proper TCP/IP settings provided by the DIR-655. The DHCP Server will automatically allocate an unused IP address from the IP address pool to the requesting computer. You must specify the starting and ending address of the IP address pool.

Enable DHCP Server: Check this box to enable the DHCP server on your router. Uncheck to disable this function.

DHCP IP Address Range: Enter the starting and ending IP addresses for the DHCP server's IP assignment.

Note: If you statically (manually) assign IP addresses to your computers or devices, make sure the IP addresses are outside of this range or you may have an IP conflict.

DHCP Lease Time: The length of time for the IP address lease. Enter the Lease time in minutes.

Always Broadcast: Enable this feature to broadcast your networks DHCP server to LAN/WLAN clients.

NetBIOS Announcement: NetBIOS allows LAN hosts to discover all other computers within the network, enable this feature to allow the DHCP Server to offer NetBIOS configuration settings.

Learn NetBIOS from WAN: Enable this feature to allow WINS information to be learned from the WAN side, disable to allow manual configuration.

NetBIOS Scope: This feature allows the configuration of a NetBIOS 'domain' name under which network hosts operates. This setting has no effect if the 'Learn NetBIOS information from WAN' is activated."

NetBIOS Mode Type: Select the different type of NetBIOS node: **Broadcast only**, **Point-to-Point**, **Mixed-mode**, and **Hybrid**.

Primary/Secondary WINS IP Address: Enter your Primary (and Secondary) WINS IP address(es).

DHCP SERVER SETTINGS

Use this section to configure the built-in DHCP Server to assign IP addresses to the computers on your network.

Enable DHCP Server : ☒

DHCP IP Address Range : to

DHCP Lease Time : (minutes)

Always broadcast : ☒ (compatibility for some DHCP Clients)

NetBIOS announcement : ☐

Learn NetBIOS from WAN : ☐

NetBIOS Scope : (optional)

NetBIOS node type :

- ☐ Broadcast only (use when no WINS servers configured)
- ☐ Point-to-Point (no broadcast)
- ☒ Mixed-mode (Broadcast then Point-to-Point)
- ☐ Hybrid (Point-to-Point then Broadcast)

Primary WINS IP Address :

Secondary WINS IP Address :

DHCP Reservation

If you want a computer or device to always have the same IP address assigned, you can create a DHCP reservation. The router will assign the IP address only to that computer or device.

Note: This IP address must be within the DHCP IP Address Range.

Enable: Check this box to enable the reservation.

Computer Name: Enter the computer name or select from the drop-down menu and click <<.

IP Address: Enter the IP address you want to assign to the computer or device. This IP Address must be within the DHCP IP Address Range.

MAC Address: Enter the MAC address of the computer or device.

Copy Your PC's MAC Address: If you want to assign an IP address to the computer you are currently on, click this button to populate the fields.

Save: Click **Save** to save your entry. You must click **Save Settings** at the top to activate your reservations.

Number of Dynamic DHCP Clients: In this section you can see what LAN devices are currently leasing IP addresses.

Revoke: Click **Revoke** to cancel the lease for a specific LAN device and free an entry in the lease table. Do this only if the device no longer needs the leased IP address, because, for example, it has been removed from the network.

Note: The Revoke option will not disconnect a PC with a current network session from the network; you would need to use MAC Address Filter to do that. Revoke will only free up a DHCP Address for the very next requester. If the previous owner is still available, those two devices may both receive an IP Address Conflict error, or the second device may still not receive an IP Address; in that case, you may still need to extend the "DHCP IP Address Range" to address the issue, it is located in the DHCP Server section.

Reserve: The Reserve option converts this dynamic IP allocation into a DHCP Reservation and adds the corresponding entry to the DHCP Reservations List.

ADD DHCP RESERVATION

Enable : ☐

Computer Name : << Computer Name ▼

IP Address :

MAC Address :

DHCP RESERVATIONS LIST :

Enable	Host Name	MAC Address	IP Address

NUMBER OF DYNAMIC DHCP CLIENTS : 1

Hardware Address	Assigned IP	Hostname	Expires	
00:16:17:45:11:af	192.168.0.100	pm1-PC	Tue Dec 1 16:51:49 2009	Revoke Reserve

USB Settings

Use this section to configure your USB port. There are two configurations to choose from: Network USB and WCN Configuration.

Note: *If using the Network USB option, users will need to install the Network USB Utility into the computers to share the USB device through the router.*

USB Settings: Choose between these two configuration: Network USB and WCN Configuration.

Network USB: Please set the Network USB Detection interval time.

USB SETTINGS

Use this section to configure your USB port. There are several configurations to choose from: Network USB and WCN Configuration.

If you have trouble accessing the Internet through the router. Double check the settings you entered on this page and verify with your Internet Service Provider (ISP) if needed.

Save Settings

Don't Save Settings

USB SETTINGS

Choose the type of USB device to be plugged into the USB port.

My USB type is :

SHAREPORT FOR GUEST ZONE

Enable SharePort For Guest
Zone : ☐

Note: *Please see the SharePort Manual on the CD for more information.*

Virtual Server

The DIR-655 can be configured as a virtual server so that remote users accessing Web or FTP services via the public IP address can be automatically redirected to local servers in the LAN (Local Area Network).

The DIR-655 firewall feature filters out unrecognized packets to protect your LAN network so all computers networked with the DIR-655 are invisible to the outside world. If you wish, you can make some of the LAN computers accessible from the Internet by enabling Virtual Server. Depending on the requested service, the DIR-655 redirects the external service request to the appropriate server within the LAN network.

The DIR-655 is also capable of port-redirection meaning incoming traffic to a particular port may be redirected to a different port on the server computer.

Each virtual service that is created will be listed at the bottom of the screen in the Virtual Servers List. There are pre-defined virtual services already in the table. You may use them by enabling them and assigning the server IP to use that particular virtual service.

For a list of ports for common applications, please visit **http://support.dlink.com/faq/view.asp?prod_id=1191**.

This will allow you to open a single port. If you would like to open a range of ports, refer to the next page.

Name: Enter a name for the rule or select an application from the drop-down menu. Select an application and click << to populate the fields.

IP Address: Enter the IP address of the computer on your local network that you want to allow the incoming service to. If your computer is receiving an IP address automatically from the router (DHCP), you computer will be listed in the "Computer Name" drop-down menu. Select your computer and click <<.

Private Port/ Public Port: Enter the port that you want to open next to Private Port and Public Port. The private and public ports are usually the same. The public port is the port seen from the Internet side, and the private port is the port being used by the application on the computer within your local network.

Protocol Type: Select **TCP**, **UDP**, or **Both** from the drop-down menu.

Inbound Filter: Select **Allow All** (most common) or a created Inbound filter. You may create your own inbound filters in the **Advanced > Inbound Filter** page.

Schedule: The schedule of time when the Virtual Server Rule will be enabled. The schedule may be set to Always, which will allow the particular service to always be enabled. You can create your own times in the **Tools > Schedules** section.

Product Page: DIR-655 Hardware Version: B1 Firmware Version: 2.00NA

D-Link

DIR-655 // SETUP ADVANCED TOOLS STATUS SUPPORT

VIRTUAL SERVER

The Virtual Server option allows you to define a single public port on your router for redirection to an internal LAN IP Address and Private LAN port if required. This feature is useful for hosting online services such as FTP or Web Servers.

Save Settings Don't Save Settings

24 --- VIRTUAL SERVERS LIST

	Name	Application	Public Port	Protocol	Schedule
<input checked="" type="checkbox"/>	FTP	<< Application Name	21	TCP	Always
	IP Address	<< Computer Name	Private Port		Inbound Filter
	192.168.0.100		21	6	Allow All
<input type="checkbox"/>		<< Application Name	0	TCP	Always
	IP Address	<< Computer Name	Private Port		Inbound Filter
	0.0.0.0		0	6	Allow All
<input type="checkbox"/>		<< Application Name	0	TCP	Always
	IP Address		Private Port		Inbound Filter

Helpful Hints...

Check the **Application Name** drop down menu for a list of predefined server types. If you select one of the predefined server types, click the arrow button next to the drop down menu to fill out the corresponding field.

You can select a computer from the list of DHCP clients in the **Computer Name** drop down menu, or you can manually enter the IP address of the computer at which you would like to open the specified port.

Select a schedule for when the virtual server will be enabled. If you do not see the schedule you need in the list of schedules, go to the **Tools > Schedules** screen and create a new schedule.

Port Forwarding

This will allow you to open a single port or a range of ports.

Name: Enter a name for the rule or select an application from the drop-down menu. Select an application and click << to populate the fields.

IP Address: Enter the IP address of the computer on your local network that you want to allow the incoming service to. If your computer is receiving an IP address automatically from the router (DHCP), your computer will be listed in the "Computer Name" drop-down menu. Select your computer and click <<.

TCP/UDP: Enter the TCP and/or UDP port or ports that you want to open. You can enter a single port or a range of ports. Separate ports with a common.

Example: 24,1009,3000-4000

Inbound Filter: Select **Allow All** (most common) or a created Inbound filter. You may create your own inbound filters in the **Advanced > Inbound Filter** page.

Schedule: The schedule of time when the Virtual Server Rule will be enabled. The schedule may be set to Always, which will allow the particular service to always be enabled. You can create your own times in the **Tools > Schedules** section.

Product Page: DIR-655 Hardware Version: B1 Firmware Version: 2.00NA

D-Link

DIR-655 // SETUP ADVANCED TOOLS STATUS SUPPORT

PORT FORWARDING RULES :

This option is used to open multiple ports or a range of ports in your router and redirect data through those ports to a single PC on your network. This feature allows you to enter ports in various formats including, Port Ranges (100-150), Individual Ports (80, 68, 888), or Mixed (1020-5000, 689).

Save Settings Don't Save Settings

24 -- PORT FORWARDING RULES

	Name	IP Address	Ports to Open	Schedule	Inbound Filter
<input type="checkbox"/>	<< Application Name	0.0.0.0	TCP 0	Always	Allow All
<input type="checkbox"/>	<< Application Name	0.0.0.0	UDP 0	Always	Allow All
<input type="checkbox"/>	<< Application Name	0.0.0.0	TCP 0	Always	Allow All
<input type="checkbox"/>	<< Application Name	0.0.0.0	UDP 0	Always	Allow All

Helpful Hints...

Check the **Application Name** drop down menu for a list of predefined applications. If you select one of the predefined applications, click the arrow button next to the drop down menu to fill out the corresponding field.

You can select a computer from the list of DHCP clients in the **Computer Name** drop down menu, or you can manually enter the IP address of the LAN computer to which you would like to open the specified port.

Select a schedule for when the rule will be enabled. If you do not see the schedule you need in the list of schedules, go to the **Tools -- Schedules** screen and create a new schedule.

You can enter ports in

Application Rules

Some applications require multiple connections, such as Internet gaming, video conferencing, Internet telephony and others. These applications have difficulties working through NAT (Network Address Translation). Special Applications makes some of these applications work with the DIR-655. If you need to run applications that require multiple connections, specify the port normally associated with an application in the "Trigger Port" field, select the protocol type as TCP or UDP, then enter the firewall (public) ports associated with the trigger port to open them for inbound traffic.

The DIR-655 provides some predefined applications in the table on the bottom of the web page. Select the application you want to use and enable it.

Name: Enter a name for the rule. You may select a pre-defined application from the drop-down menu and click <<.

Trigger: This is the port used to trigger the application. It can be either a single port or a range of ports.

Traffic Type: Select the protocol of the trigger port (TCP, UDP, or Both).

Firewall: This is the port number on the Internet side that will be used to access the application. You may define a single port or a range of ports. You can use a comma to add multiple ports or port ranges.

Traffic Type: Select the protocol of the firewall port (TCP, UDP, or Both).

Schedule: The schedule of time when the Application Rule will be enabled. The schedule may be set to Always, which will allow the particular service to always be enabled. You can create your own times in the **Tools > Schedules** section.

Product Page: DIR-655
Hardware Version: B1
Firmware Version: 2.00NA

DIR-655

SETUP

ADVANCED

TOOLS

STATUS

SUPPORT

VIRTUAL SERVER
PORT FORWARDING
APPLICATION RULES
QOS ENGINE
NETWORK FILTER
ACCESS CONTROL
WEBSITE FILTER
INBOUND FILTER
FIREWALL SETTINGS
ROUTING
ADVANCED WIRELESS
WISH
WI-FI PROTECTED SETUP
ADVANCED NETWORK
GUEST ZONE
IPv6

APPLICATION RULES

This option is used to open single or multiple ports on your router when the router senses data sent to the Internet on a "trigger" port or port range. Special Applications rules apply to all computers on your internal network.

Save Settings
Don't Save Settings

24 --- APPLICATION RULES

	Name	Application	Port	Traffic Type	Schedule
<input type="checkbox"/>	<input type="text"/>	<< Application Name	Trigger 0	TCP	Always
			Firewall 0	TCP	
<input type="checkbox"/>	<input type="text"/>	<< Application Name	Trigger 0	TCP	Always
			Firewall 0	TCP	
<input type="checkbox"/>	<input type="text"/>	<< Application Name	Trigger 0	TCP	Always
			Firewall 0	TCP	

Helpful Hints...

Use this feature if you are trying to execute one of the listed network applications and it is not communicating as expected.

Check the **Application Name** drop down menu for a list of predefined applications. If you select one of the predefined applications, click the arrow button next to the drop down menu to fill out the corresponding field.

Select a schedule for when the service will be enabled. If you do not see the schedule you need in the list of schedules, go to the **Tools --> Schedules** screen and create a new schedule.

More...

QoS Engine

The QoS Engine option helps improve your network gaming performance by prioritizing applications. By default the QoS Engine settings are disabled and application priority is not classified automatically.

Enable StreamEngine: This option is disabled by default. Enable this option for better performance and experience with online games and other interactive applications, such as VoIP.

Dynamic Fragmentation: This option should be enabled when you have a slow Internet uplink. It helps to reduce the impact that large low priority network packets can have on more urgent ones.

Automatic Uplink Speed: This option is enabled by default when the QoS Engine option is enabled. This option will allow your router to automatically determine the uplink speed of your Internet connection.

Measured Uplink Speed: This displays the detected uplink speed.

Manual Uplink Speed: The speed at which data can be transferred from the router to your ISP. This is determined by your ISP. ISP's often speed as a download/upload pair. For example, 1.5Mbps/284Kbps. Using this example, you would enter 284. Alternatively you can test your uplink speed with a service such as www.dslreports.com.

Connection Type: By default, the router automatically determines whether the underlying connection is an xDSL/Frame-relay network or some other connection type (such as cable modem or Ethernet), and it displays the result as Detected xDSL or Frame Relay Network. If you have an unusual network connection in which you are actually connected via xDSL but for which you configure either "Static" or "DHCP" in the Internet settings, setting this option to xDSL or Other Frame Relay Network ensures that the router will recognize that it needs to shape traffic slightly differently in order to give the best performance. Choosing xDSL or Other Frame Relay Network causes the measured uplink speed to be reported slightly lower than before on such connections, but gives much better results.

Detected xDSL: When Connection Type is set to automatic, the automatically detected connection type is displayed here.

Product Page: DIR-655 Hardware Version: B1 Firmware Version: 2.00NA

D-Link

DIR-655	SETUP	ADVANCED	TOOLS	STATUS	SUPPORT
VIRTUAL SERVER PORT FORWARDING APPLICATION RULES QOS ENGINE NETWORK FILTER ACCESS CONTROL WEBSITE FILTER INBOUND FILTER FIREWALL SETTINGS ROUTING ADVANCED WIRELESS WISH WI-FI PROTECTED SETUP ADVANCED NETWORK GUEST ZONE IPV6	<h3>QOS ENGINE</h3> <p>Use this section to configure D-Link's QoS Engine powered by QoS Engine™ Technology. This QoS Engine improves your online gaming experience by ensuring that your game traffic is prioritized over other network traffic, such as FTP or Web. For best performance, use the Automatic Classification option to automatically set the priority for your applications.</p> <p>Save Settings Don't Save Settings</p> <h3>WAN TRAFFIC SHAPING</h3> <p> Enable Traffic Shaping : <input checked="" type="checkbox"/> Automatic Uplink Speed : <input checked="" type="checkbox"/> Measured Uplink Speed : Not Estimated Manual Uplink Speed : 128 kbps << Select Transmission Rate </p> <h3>QOS ENGINE SETUP</h3> <p> Enable QoS Engine : <input checked="" type="checkbox"/> Automatic Classification : <input checked="" type="checkbox"/> Dynamic Fragmentation : <input checked="" type="checkbox"/> </p>				<h3>Helpful Hints ...</h3> <p>If the Measured Uplink Speed is known to be incorrect (that is, it produces suboptimal performance), disable Automatic Uplink Speed and enter the Manual Uplink Speed. Some experimentation and performance measurement may be required to converge on the optimal value.</p> <p>More...</p>

Network Filters

Use MAC (Media Access Control) Filters to allow or deny LAN (Local Area Network) computers by their MAC addresses from accessing the Network. You can either manually add a MAC address or select the MAC address from the list of clients that are currently connected to the Broadband Router.

Configure MAC Filtering: Select Turn MAC Filtering Off, allow MAC addresses listed below, or deny MAC addresses listed below from the drop-down menu.

MAC Address: Enter the MAC address you would like to filter.
To find the MAC address on a computer, please refer to the Networking Basics section in this manual.

DHCP Client: Select a DHCP client from the drop-down menu and click << to copy that MAC Address.

Product Page: DIR-655

Hardware Version: B1

Firmware Version: 2.00NA

DIR-655

SETUP

ADVANCED

TOOLS

STATUS

SUPPORT

VIRTUAL SERVER

PORT FORWARDING

APPLICATION RULES

QOS ENGINE

NETWORK FILTER

ACCESS CONTROL

WEBSITE FILTER

INBOUND FILTER

FIREWALL SETTINGS

ROUTING

ADVANCED WIRELESS

WISH

WI-FI PROTECTED SETUP

ADVANCED NETWORK

GUEST ZONE

IPV6

MAC ADDRESS FILTER

The MAC (Media Access Controller) Address filter option is used to control network access based on the MAC Address of the network adapter. A MAC address is a unique ID assigned by the manufacturer of the network adapter. This feature can be configured to ALLOW or DENY network/Internet access.

Save Settings

Don't Save Settings

24 -- MAC FILTERING RULES

Configure MAC Filtering below:

Turn MAC Filtering OFF

MAC Address		DHCP Client List	
	<<	Computer Name	Clear
	<<	Computer Name	Clear
	<<	Computer Name	Clear
	<<	Computer Name	Clear
	<<	Computer Name	Clear
	<<	Computer Name	Clear

Helpful Hints...

Create a list of MAC addresses that you would either like to allow or deny access to your network.

Computers that have obtained an IP address from the router's DHCP server will be in the DHCP Client List. Select a device from the drop down menu, then click the arrow to add that device's MAC address to the list.

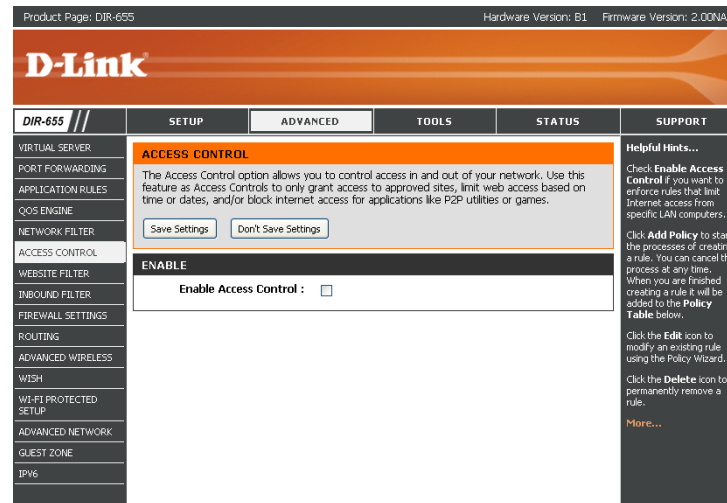
Click the **Clear** button to remove the MAC address from the MAC Filtering list.

[More...](#)

Access Control

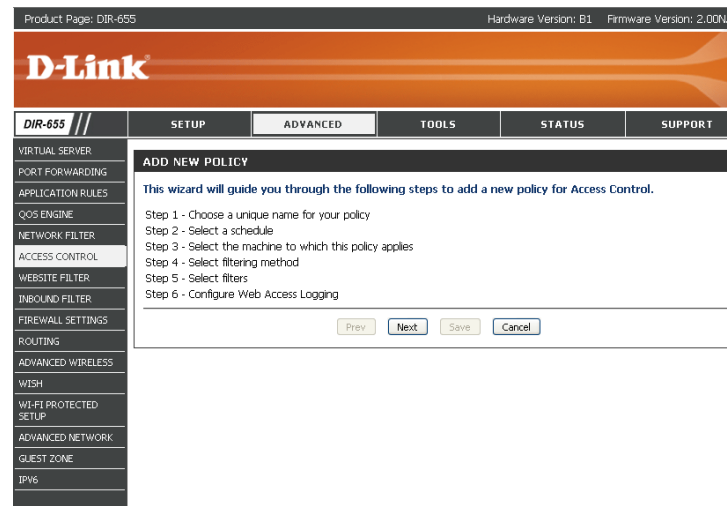
The Access Control section allows you to control access in and out of your network. Use this feature as Parental Controls to only grant access to approved sites, limit web access based on time or dates, and/or block access from applications like P2P utilities or games.

Add Policy: Click the **Add Policy** button to start the Access Control Wizard.

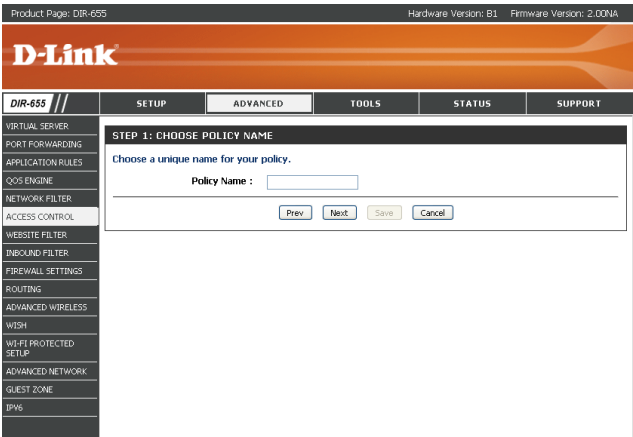


Access Control Wizard

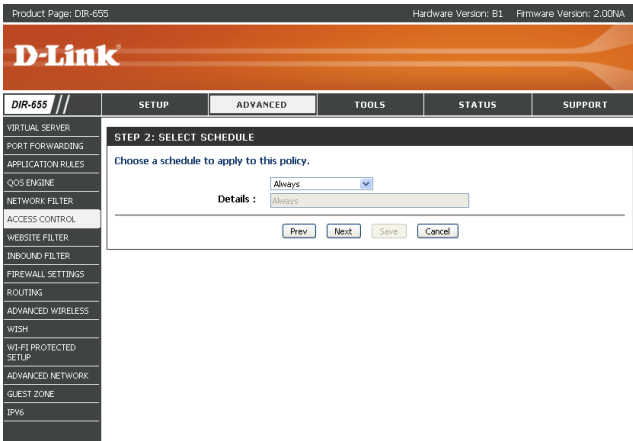
Click **Next** to continue with the wizard.



Enter a name for the policy and then click **Next** to continue.

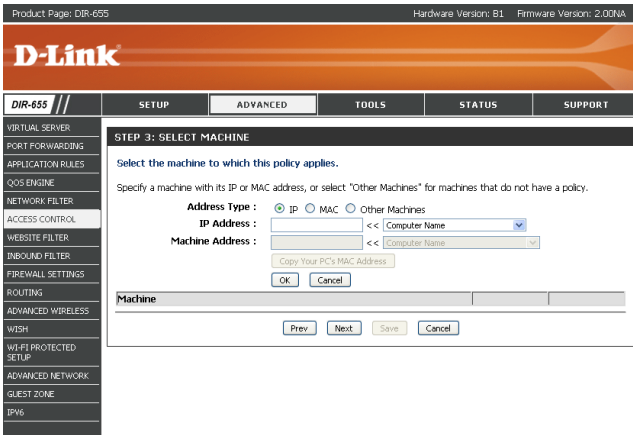


Select a schedule (I.E. Always) from the drop-down menu and then click **Next** to continue.



Enter the following information and then click **Next** to continue.

- **Address Type** - Select IP address, MAC address, or Other Machines.
- **IP Address** - Enter the IP address of the computer you want to apply the rule to.



Select the filtering method and then click **Next** to continue.

Product Page: DIR-655 Hardware Version: B1 Firmware Version: 2.00NA

D-Link

DIR-655 // SETUP ADVANCED TOOLS STATUS SUPPORT

STEP 4: SELECT FILTERING METHOD

Select the method for filtering.

Method : ☐ Log Web Access Only ☐ Block All Access ☒ Block Some Access

Apply Web Filter : ☐

Apply Advanced Port Filters : ☐

Prev Next Save Cancel

Enter the rule:

- Enable** - Check to enable the rule.
- Name** - Enter a name for your rule.
- Dest IP Start** - Enter the starting IP address.
- Dest IP End** - Enter the ending IP address.
- Protocol** - Select the protocol.
- Dest Port Start** - Enter the starting port number.
- Dest Port End** - Enter the ending port number.

Product Page: DIR-655 Hardware Version: B1 Firmware Version: 2.00NA

D-Link

DIR-655 // SETUP ADVANCED TOOLS STATUS SUPPORT

STEP 5: PORT FILTER

Add Port Filters Rules.

Specify rules to prohibit access to specific IP addresses and ports.

Enable	Name	Dest IP Start	Dest IP End	Protocol	Dest Port Start	Dest Port End
<input type="checkbox"/>		0.0.0.0	255.255.255.255	Any	0	65535
<input type="checkbox"/>		0.0.0.0	255.255.255.255	Any	0	65535
<input type="checkbox"/>		0.0.0.0	255.255.255.255	Any	0	65535
<input type="checkbox"/>		0.0.0.0	255.255.255.255	Any	0	65535
<input type="checkbox"/>		0.0.0.0	255.255.255.255	Any	0	65535
<input type="checkbox"/>		0.0.0.0	255.255.255.255	Any	0	65535
<input type="checkbox"/>		0.0.0.0	255.255.255.255	Any	0	65535
<input type="checkbox"/>		0.0.0.0	255.255.255.255	Any	0	65535
<input type="checkbox"/>		0.0.0.0	255.255.255.255	Any	0	65535
<input type="checkbox"/>		0.0.0.0	255.255.255.255	Any	0	65535

Prev Next Save Cancel

To enable web logging, click **Enable**.

Click **Save** to save the access control rule.

STEP 4: SELECT FILTERING METHOD

Select the method for filtering.

Method : ☒ Log Web Access Only ☐ Block All Access ☐ Block Some Access

Prev Next Save Cancel

Website Filters

Website Filters are used to deny LAN computers from accessing specific web sites by the URL or domain. A URL is a specially formatted text string that defines a location on the Internet. If any part of the URL contains the blocked word, the site will not be accessible and the web page will not display. To use this feature, enter the text string to be blocked and click **Save Settings**. The text to be blocked will appear in the list. To delete the text, click **Clear the List Below**.

Website URL/Domain: Enter the keywords or URLs that you want to block (or allow).
Any URL with the keyword in it will be blocked.

Product Page: DIR-655

Hardware Version: B1

Firmware Version: 2.00NA

DIR-655

SETUP

ADVANCED

TOOLS

STATUS

SUPPORT

VIRTUAL SERVER

PORT FORWARDING

APPLICATION RULES

QOS ENGINE

NETWORK FILTER

ACCESS CONTROL

WEBSITE FILTER

INBOUND FILTER

FIREWALL SETTINGS

ROUTING

ADVANCED WIRELESS

WISH

WI-FI PROTECTED SETUP

ADVANCED NETWORK

GUEST ZONE

IPv6

WEBSITE FILTER

The Website Filter option allows you to set up a list of Web sites you would like to allow or deny through your network. To us this feature, you must also select the "Apply Web Filter" checkbox in the Access Control section.

Save Settings Don't Save Settings

40 - WEBSITE FILTERING RULES

Configure Website Filter below:

DENY computers access to ONLY these sites

Clear the list below...

Website URL/Domain	

Helpful Hints...

Create a list of Web Sites to which you would like to deny or allow through the network.

Use with **Advanced** → **Access Control**.

More...

Inbound Filters

The Inbound Filter option is an advanced method of controlling data received from the Internet. With this feature you can configure inbound data filtering rules that control data based on an IP address range. Inbound Filters can be used with Virtual Server, Port Forwarding, or Remote Administration features.

Name: Enter a name for the inbound filter rule.

Action: Select **Allow** or **Deny**.

Enable: Check to enable rule.

Source IP Start: Enter the starting IP address. Enter 0.0.0.0 if you do not want to specify an IP range.

Source IP End: Enter the ending IP address. Enter 255.255.255.255 if you do not want to specify an IP range.

Save: Click the **Save** button to apply your settings. You must click **Save Settings** at the top to save the settings.

Inbound Filter Rules List: This section will list any rules that are created. You may click the **Edit** icon to change the settings or enable/disable the rule, or click the **Delete** icon to remove the rule.

Product Page: DIR-655Hardware Version: B1Firmware Version: 2.00NA

D-Link

DIR-655

SETUP

ADVANCED

TOOLS

STATUS

SUPPORT

VIRTUAL SERVER

PORT FORWARDING

APPLICATION RULES

QOS ENGINE

NETWORK FILTER

ACCESS CONTROL

WEBSITE FILTER

INBOUND FILTER

FIREWALL SETTINGS

ROUTING

ADVANCED WIRELESS

WISH

WI-FI PROTECTED SETUP

ADVANCED NETWORK

GUEST ZONE

IPv6

INBOUND FILTER

The Inbound Filter option is an advanced method of controlling data received from the Internet. With this feature you can configure inbound data filtering rules that control data based on an IP address range.

Inbound Filters can be used for limiting access to a server on your network to a system or group of systems. Filter rules can be used with Virtual Server, Port Forwarding, or Remote Administration features.

ADD INBOUND FILTER RULE

Name :

Action :

Allow All

Remote IP Range :

Enable

Remote IP Start

Remote IP End

☐

0.0.0.0

255.255.255.255

☐

0.0.0.0

255.255.255.255

☐

0.0.0.0

255.255.255.255

☐

0.0.0.0

255.255.255.255

☐

0.0.0.0

255.255.255.255

☐

0.0.0.0

255.255.255.255

☐

0.0.0.0

255.255.255.255

Helpful Hints...

Give each rule a Name that is meaningful to you.

Each rule can either **Allow** or **Deny** access from the WAN.

Up to eight ranges of WAN IP addresses can be controlled by each rule. The checkbox by each IP range can be used to disable ranges already defined.

The starting and ending IP addresses are WAN-side address.

Click the **Add** or **Update** button to store a finished rule in the Rules List below.

Click the **Edit** icon in the Rules List to change a rule.

Click the **Delete** icon in the Rules List to remove the rule.

D-Link DIR-655 User Manual

35

Firewall Settings

A firewall protects your network from the outside world. The D-Link DIR-655 offers a firewall type functionality. The SPI feature helps prevent cyber attacks. Sometimes you may want a computer exposed to the outside world for certain types of applications. If you choose to expose a computer, you can enable DMZ. DMZ is short for Demilitarized Zone. This option will expose the chosen computer completely to the outside world.

Enable SPI: SPI (Stateful Packet Inspection, also known as dynamic packet filtering) helps to prevent cyber attacks by tracking more state per session. It validates that the traffic passing through the session conforms to the protocol.

NAT Endpoint Filtering: Select one of the following for TCP and UDP ports:
Endpoint Independent - Any incoming traffic sent to an open port will be forwarded to the application that opened the port. The port will close if idle for 5 minutes.

Address Restricted - Incoming traffic must match the IP address of the outgoing connection.

Address + Port Restriction - Incoming traffic must match the IP address and port of the outgoing connection.

Enable DMZ Host: If an application has trouble working from behind the router, you can expose one computer to the Internet and run the application on that computer.

Note: Placing a computer in the DMZ may expose that computer to a variety of security risks. Use of this option is only recommended as a last resort.

IP Address: Specify the IP address of the computer on the LAN that you want to have unrestricted Internet communication. If this computer obtains its IP address automatically using DHCP, be sure to make a static reservation on the **Basic > DHCP** page so that the IP address of the DMZ machine does not change.

Product Page: DIR-655

Hardware Version: B1

Firmware Version: 2.00NA

DIR-655

SETUP

ADVANCED

TOOLS

STATUS

SUPPORT

VIRTUAL SERVER

PORT FORWARDING

APPLICATION RULES

QOS ENGINE

NETWORK FILTER

ACCESS CONTROL

WEBSITE FILTER

INBOUND FILTER

FIREWALL SETTINGS

ROUTING

ADVANCED WIRELESS

WISH

WI-FI PROTECTED SETUP

ADVANCED NETWORK

GUEST ZONE

IPV6

FIREWALL SETTINGS

The Firewall Settings allow you to set a single computer on your network outside of the router.

Save Settings

Don't Save Settings

FIREWALL SETTINGS

Enable SPI: ☒

NAT ENDPOINT FILTERING

UDP Endpoint Filtering:

☐ Endpoint Independent
 ☒ Address Restricted
 ☐ Port And Address Restricted

TCP Endpoint Filtering:

☐ Endpoint Independent
 ☐ Address Restricted
 ☒ Port And Address Restricted

ANTI-SPOOF CHECKING

Enable anti-spoof checking: ☐

Helpful Hints...

Enable the DMZ option only as a last resort. If you are having trouble using an application from a computer behind the router, first try opening ports associated with the application in the **Virtual Server** or **Port Forwarding** sections.

More...

Application Level Gateway Configuration

Here you can enable or disable ALG's. Some protocols and applications require special handling of the IP payload to make them work with network address translation (NAT). Each ALG provides special handling for a specific protocol or application. A number of ALGs for common applications are enabled by default.

PPTP: Allows multiple machines on the LAN to connect to their corporate network using PPTP protocol.

IPSEC (VPN): Allows multiple VPN clients to connect to their corporate network using IPsec. Some VPN clients support traversal of IPsec through NAT. This ALG may interfere with the operation of such VPN clients. If you are having trouble connecting with your corporate network, try turning this ALG off. Please check with the system administrator of your corporate network whether your VPN client supports NAT traversal.

RTSP: Allows applications that use Real Time Streaming Protocol to receive streaming media from the internet. QuickTime and Real Player are some of the common applications using this protocol.

SIP: Allows devices and applications using VoIP (Voice over IP) to communicate across NAT. Some VoIP applications and devices have the ability to discover NAT devices and work around them. This ALG may interfere with the operation of such devices. If you are having trouble making VoIP calls, try turning this ALG off.

Routing

The Routing option is an advanced method of customizing specific routes of data through your network.

Destination IP: Enter the IP address of packets that will take this route.

Netmask: Enter the netmask of the route, please note that the octets must match your destination IP address.

Gateway: Enter your next hop gateway to be taken if this route is used.

Metric: The route metric is a value from 1 to 16 that indicates the cost of using this route. A value 1 is the lowest cost and 15 is the highest cost.

Interface: Select the interface that the IP packet must use to transit out of the router when this route is used.

Product Page: DIR-655 Hardware Version: B1 Firmware Version: 2.00NA

D-Link

DIR-655 // SETUP ADVANCED TOOLS STATUS SUPPORT

ROUTING :

This Routing page allows you to specify custom routes that determine how data is moved around your network.

Save Settings Don't Save Settings

32 --ROUTE LIST

	Name	Destination IP	Metric	Interface
<input type="checkbox"/>	Netmask 0.0.0.0	Gateway 0.0.0.0	1	WAN
<input type="checkbox"/>	Netmask 0.0.0.0	Gateway 0.0.0.0	1	WAN
<input type="checkbox"/>	Netmask 0.0.0.0	Gateway 0.0.0.0	1	WAN

Helpful Hints...

Each route has a check box next to it, check this box if you want the route to be enabled.

The name field allows you to specify a name for identification of this route, e.g. "Network 2"

The destination IP address is the address of the host or network you wish to reach.

The netmask field identifies the portion of the destination IP in use.

The gateway IP address is the IP address of the router, if any, used to reach the specified destination.

[More...](#)

Advanced Wireless Settings

Transmit Power: Set the transmit power of the antennas.

Beacon Period: Beacons are packets sent by an Access Point to synchronize a wireless network. Specify a value. 100 is the default setting and is recommended.

RTS Threshold: This value should remain at its default setting of 2432. If inconsistent data flow is a problem, only a minor modification should be made.

Fragmentation Threshold: The fragmentation threshold, which is specified in bytes, determines whether packets will be fragmented. Packets exceeding the 2346 byte setting will be fragmented before transmission. 2346 is the default setting.

DTIM Interval: (Delivery Traffic Indication Message) 3 is the default setting. A DTIM is a countdown informing clients of the next window for listening to broadcast and multicast messages.

WMM Function: WMM is QoS for your wireless network. This will improve the quality of video and voice applications for your wireless clients.

Short GI: Check this box to reduce the guard interval time therefore increasing the data capacity. However, it's less reliable and may create higher data loss.

Product Page: DIR-655

Hardware Version: B1

Firmware Version: 2.00NA

DIR-655

SETUP

ADVANCED

TOOLS

STATUS

SUPPORT

VIRTUAL SERVER

PORT FORWARDING

APPLICATION RULES

QOS ENGINE

NETWORK FILTER

ACCESS CONTROL

WEBSITE FILTER

INBOUND FILTER

FIREWALL SETTINGS

ROUTING

ADVANCED WIRELESS

WISH

WI-FI PROTECTED SETUP

ADVANCED NETWORK

GUEST ZONE

IPv6

ADVANCED WIRELESS

If you are not familiar with these Advanced Wireless settings, please read the help section before attempting to modify these settings.

Save Settings

Don't Save Settings

ADVANCED WIRELESS SETTINGS

Transmit Power : High

Beacon Period : 100 (20..1000)

RTS Threshold : 2347 (0..2347)

Fragmentation : 2346 (256..2346)

DTIM Interval : 1 (1..255)

WLAN Partition : ☐

WMM Enable : ☒

Short GI : ☒

Helpful Hints...

It is recommended that you leave these parameters at their default values. Adjusting them could limit the performance of your wireless network.

Use 802.11d only for countries where it is required.

Enabling WMM can help control latency and jitter when transmitting multimedia content over a wireless connection.

More...

WISH Settings

WISH is short for Wireless Intelligent Stream Handling, a technology developed to enhance your experience of using a wireless network by prioritizing the traffic of different applications.

Enable WISH: Enable this option if you want to allow WISH to prioritize your traffic.

HTTP: Allows the router to recognize HTTP transfers for many common audio and video streams and prioritize them above other traffic. Such streams are frequently used by digital media players.

Windows Media Center: Enables the router to recognize certain audio and video streams generated by a Windows Media Center PC and to prioritize these above other traffic. Such streams are used by systems known as Windows Media Extenders, such as the Xbox 360.

Automatic: When enabled, this option causes the router to automatically attempt to prioritize traffic streams that it doesn't otherwise recognize, based on the behaviour that the streams exhibit. This acts to deprioritize streams that exhibit bulk transfer characteristics, such as file transfers, while leaving interactive traffic, such as gaming or VoIP, running at a normal priority.

WISH Rules: A WISH Rule identifies a specific message flow and assigns a priority to that flow. For most applications, the priority classifiers ensure the right priorities and specific WISH Rules are not required.

WISH supports overlaps between rules. If more than one rule matches for a specific message flow, the rule with the highest priority will be used.

D-Link

DIR-655 // **SETUP** **ADVANCED** **TOOLS** **STATUS** **SUPPORT**

VIRTUAL SERVER
PORT FORWARDING
APPLICATION RULES
QOS ENGINE
NETWORK FILTER
ACCESS CONTROL
WEBSITE FILTER
INBOUND FILTER
FIREWALL SETTINGS
ROUTING
ADVANCED WIRELESS
WISH
WI-FI PROTECTED SETUP
ADVANCED NETWORK
GUEST ZONE
IPv6

WISH
WISH (Wireless Intelligent Stream Handling) prioritizes the traffic of various wireless applications.

WISH
Enable WISH : ☒

PRIORITY CLASSIFIERS
HTTP : ☒
Windows Media Center : ☒

24 -- WISH RULES

	Name	Priority	Protocol
<input type="checkbox"/>	Host 1 IP Range 0.0.0.0 to 255.255.255.255	Background (BK)	Host 1 Port Range 0 to 65535
<input type="checkbox"/>	Host 2 IP Range 0.0.0.0 to 255.255.255.255		Host 2 Port Range 0 to 65535
	Name	Priority	Protocol

Helpful Hints...
Enable this option if you want to allow WISH to prioritize wireless traffic.
For most applications, the priority classifiers ensure the right priorities, and specific WISH Rules are not required.
[More...](#)

Wi-Fi Protected Setup (WPS)

Wi-Fi Protected Setup (WPS) System is a simplified method for securing your wireless network during the “Initial setup” as well as the “Add New Device” processes. The Wi-Fi Alliance (WFA) has certified it across different products as well as manufactures. The process is just as easy, as depressing a button for the Push-Button Method or correctly entering the 8-digit code for the Pin-Code Method. The time reduction in setup and ease of use are quite beneficial, while the highest wireless Security setting of WPA2 is automatically used.

Enable: Enable the Wi-Fi Protected Setup feature.

Lock Wireless Security Settings: Locking the wireless security settings prevents the settings from being changed by the Wi-Fi Protected Setup feature of the router. Devices can still be added to the network using Wi-Fi Protected Setup. However, the settings of the network will not change once this option is checked.

PIN Settings: A PIN is a unique number that can be used to add the router to an existing network or to create a new network. The default PIN may be printed on the bottom of the router. For extra security, a new PIN can be generated. You can restore the default PIN at any time. Only the Administrator (“admin” account) can change or reset the PIN.

Current PIN: Shows the current value of the router’s PIN.

Reset PIN to Default: Restore the default PIN of the router.

Generate New PIN: Create a random number that is a valid PIN. This becomes the router’s PIN. You can then copy this PIN to the user interface of the registrar.
This Wizard helps you add wireless devices to the wireless network.

Add Wireless Station: The wizard will either display the wireless network settings to guide you through manual configuration, prompt you to enter the PIN for the device, or ask you to press the configuration button on the device. If the device supports Wi-Fi Protected Setup and has a configuration button, you can add it to the network by pressing the configuration button on the device and then the on the router within 60 seconds. The status LED on the router will flash three times if the device has been successfully added to the network.

There are several ways to add a wireless device to your network. A “registrar” controls access to the wireless network. A registrar only allows devices onto the wireless network if you have entered the PIN, or pressed a special Wi-Fi Protected Setup button on the device. The router acts as a registrar for the network, although other devices may act as a registrar as well.

Add Wireless Device Wizard: Start the wizard.

Product Page: DIR-655 Hardware Version: B1 Firmware Version: 2.00NA

D-Link

DIR-655 // SETUP ADVANCED TOOLS STATUS SUPPORT

WI-FI PROTECTED SETUP

Wi-Fi Protected Setup is used to easily add devices to a network using a PIN or button press. Devices must support Wi-Fi Protected Setup in order to be configured by this method.

Save Settings Don't Save Settings

WI-FI PROTECTED SETUP

Enable : ☒

Lock Wireless Security Settings : ☐

Reset to Unconfigured

PIN SETTINGS

Current PIN : 58930304

Generate New PIN Reset PIN to Default

ADD WIRELESS STATION

Add Wireless Device with WPS

Helpful Hints...

Enable if other wireless devices you wish to include in the local network support Wi-Fi Protected Setup.

Only "Admin" account can change security settings.

Lock Wireless Security Settings after all wireless network devices have been configured.

Click **Add Wireless Device Wizard** to use Wi-Fi Protected Setup to add wireless devices to the wireless network.

More...

Advanced Network Settings

UPnP Settings: To use the Universal Plug and Play (UPnP™) feature click on **Enabled**. UPNP provides compatibility with networking equipment, software and peripherals.

Internet Ping: Unchecking the box will not allow the DIR-655 to respond to pings. Blocking the Ping may provide some extra security from hackers. Check the box to allow the Internet port to be “pinged”.

Internet Port Speed: You may set the port speed of the Internet port to 10Mbps, 100Mbps, 1000Mbps, or Auto 10/100/1000Mbps. Some older cable or DSL modems may require you to set the port speed to 10Mbps.

Multicast streams: Check the box to allow multicast traffic to pass through the router from the Internet.

Product Page: DIR-655

Hardware Version: B1

Firmware Version: 2.00NA

DIR-655

SETUP

ADVANCED

TOOLS

STATUS

SUPPORT

VIRTUAL SERVER

PORT FORWARDING

APPLICATION RULES

QOS ENGINE

NETWORK FILTER

ACCESS CONTROL

WEBSITE FILTER

INBOUND FILTER

FIREWALL SETTINGS

ROUTING

ADVANCED WIRELESS

WISH

WI-FI PROTECTED SETUP

ADVANCED NETWORK

GUEST ZONE

IPV6

ADVANCED NETWORK

ADVANCED NETWORK

If you are not familiar with these Advanced Network settings, please read the help section before attempting to modify these settings.

Save Settings Don't Save Settings

UPNP

Universal Plug and Play (UPnP) supports peer-to-peer Plug and Play functionality for network devices.

Enable UPnP : ☒

PPPOE PASS THROUGH

Enable PPPoE Pass Through : ☒

WAN PING

If you enable this feature, the WAN port of your router will respond to ping requests from the Internet that are sent to the WAN IP Address.

Enable WAN Ping Respond : ☐

WAN Ping Inbound Filter : Allow All

Details : Allow_All

WAN PORT SPEED

WAN Port Speed : 10/100/1000Mbps Auto

MULTICAST STREAMS

Enable Multicast Streams : ☐

Helpful Hints...

UPnP helps other UPnP LAN hosts interoperate with the router. Leave the UPnP option enabled as long as the LAN has other UPnP applications.

For added security, it is recommended that you disable the WAN Ping Respond option. Ping is often used by malicious Internet users to locate active networks or PCs.

The WAN speed is usually detected automatically. If you are having problems connecting to the WAN, try selecting the speed manually.

If you are having trouble receiving multicast streams from the Internet, make sure the Multicast Streams option is enabled.

[More...](#)

WIRELESS

Guest Zone

The Guest Zone feature will allow you to create temporary zones that can be used by guests to access the Internet. These zones will be separate from your main wireless network.

Enable Guest Zone: Check to enable the Guest Zone feature.

Schedule: The schedule of time when the Guest Zone will be active. The schedule may be set to Always, which will allow the particular service to always be enabled. You can create your own times in the **Tools > Schedules** section.

Wireless Network Name: Enter a wireless network name (SSID) that is different from your main wireless network.

Enable Routing Between Zones: Check to allow network connectivity between the different zones created.

Security Mode: Select the type of security or encryption you would like to enable for the guest zone.

Product Page: DIR-655 Hardware Version: B1 Firmware Version: 2.00NA

D-Link

DIR-655 // SETUP ADVANCED TOOLS STATUS SUPPORT

GUEST ZONE

Use this section to configure the guest zone settings of your router. The guest zone provide a separate network zone for guest to access Internet.

Save Settings Don't Save Settings

GUEST ZONE SELECTION

Enable Guest Zone : ☐ Always ☒ New Schedule

Wireless Band : 2.4GHz Band

Wireless Network Name : dlink_guest (Also called the SSID)

Enable Routing Between Zones : ☐

Security Mode : None

Helpful Hints...

Use this section to configure the guest zone settings of your router. The guest zone provide a separate network zone for guest to access Internet.

[More...](#)

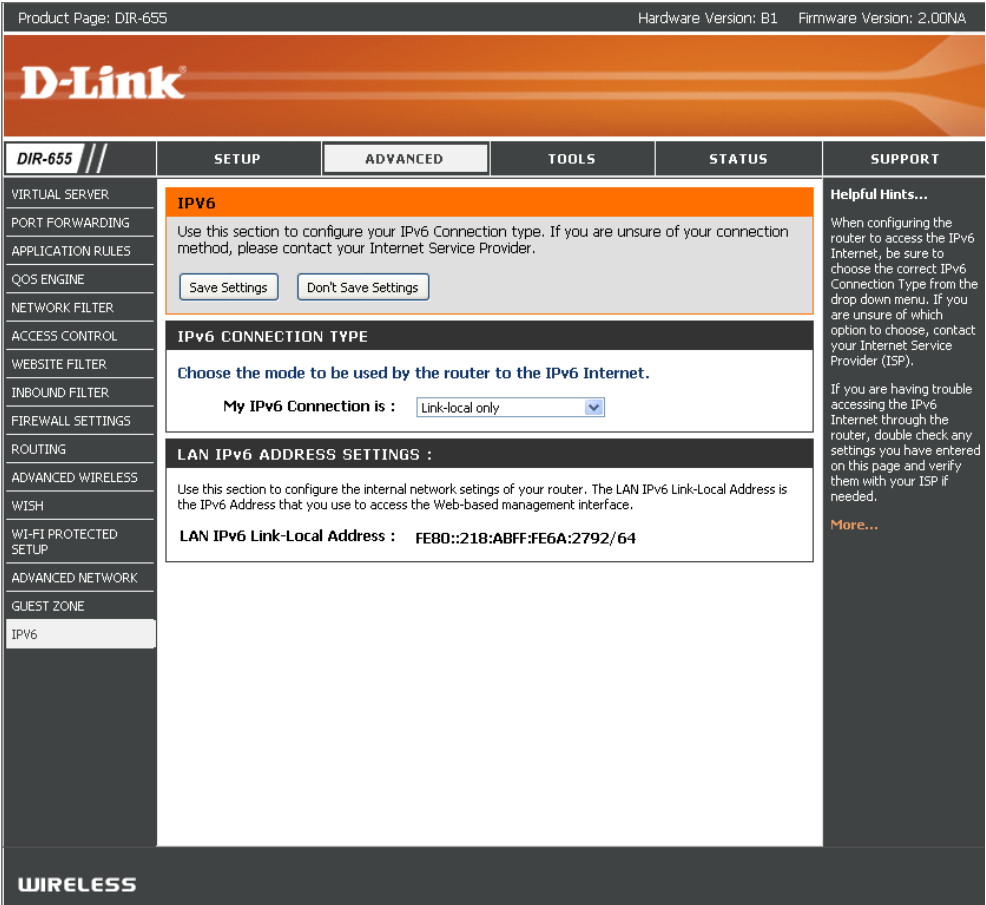
WIRELESS

IPv6

Link-Local Connectivity

My IPv6 Connection: Select **Link-Local Only** from the drop-down menu.

LAN IPv6 Address Displays the IPv6 address of the router.
Settings:



Static IPv6 (Stateful)

My IPv6 Connection: Select **Static IPv6** from the drop-down menu.

WAN IPv6 Address Settings: Enter the address settings supplied by your Internet provider (ISP).

LAN IPv6 Address: Enter the LAN (local) IPv6 address for the router.

LAN Link-Local Address: Displays the Router's LAN Link-Local Address.



Enable Autoconfiguration: Check to enable the Autoconfiguration feature.

Autoconfiguration Type: Select **Stateful (DHCPv6)** or **Stateless**. Refer to the next page for Stateless.

IPv6 Address Range Start: Enter the start IPv6 Address for the DHCPv6 range for your local computers.

IPv6 Address Range End: Enter the end IPv6 Address for the DHCPv6 range for your local computers.

IPv6 Address Lifetime: Enter the IPv6 Address Lifetime (in minutes).

IPv6 CONNECTION TYPE	
Choose the mode to be used by the router to the IPv6 Internet.	
My IPv6 Connection is :	Static IP v6 
WAN IPv6 ADDRESS SETTINGS :	
Enter the IPv6 address information provided by your Internet Service Provider (ISP).	
IPv6 Address :	<input type="text"/>
Subnet Prefix Length :	<input type="text"/>
Default Gateway :	<input type="text"/>
Primary DNS Address :	<input type="text"/>
Secondary DNS Address :	<input type="text"/>
LAN IPv6 ADDRESS SETTINGS :	
Use this section to configure the internal network settings of your router. If you change the LAN IPv6 Address here, you may need to adjust your PC's network settings to access the network again.	
LAN IPv6 Address :	<input type="text"/> /64
LAN IPv6 Link-Local Address : FE80::218:E7FF:FE6A:21BE/64	
ADDRESS AUTOCONFIGURATION SETTINGS	
Use this section to setup IPv6 Autoconfiguration to assign IP addresses to the computers on your network.	
Enable Autoconfiguration :	<input checked="" type="checkbox"/>
Autoconfiguration Type :	Stateful (DHCPv6) 
IPv6 Address Range(Start):	<input type="text"/> : <input type="text"/> /64
IPv6 Address Range(End):	<input type="text"/> : <input type="text"/> /64
IPv6 Address Lifetime:	30 <input type="text"/> (minutes)

Static IPv6 (Stateless)

My IPv6 Connection: Select **Static IPv6** from the drop-down menu.

WAN IPv6 Address Settings: Enter the address settings supplied by your Internet provider (ISP).

LAN IPv6 Address: Enter the LAN (local) IPv6 address for the router.

LAN Link-Local Address: Displays the Router's LAN Link-Local Address.

Enable Autoconfiguration: Check to enable the Autoconfiguration feature.

Autoconfiguration Type: Select **Stateless**. Refer to the previous page for Stateful.

Router Advertisement Lifetime: Enter the Router Advertisement Lifetime (in minutes).

IPv6 CONNECTION TYPE	
Choose the mode to be used by the router to the IPv6 Internet.	
My IPv6 Connection is :	Static IPv6 ▼
WAN IPv6 ADDRESS SETTINGS :	
Enter the IPv6 address information provided by your Internet Service Provider (ISP).	
IPv6 Address :	<input type="text"/>
Subnet Prefix Length :	<input type="text"/>
Default Gateway :	<input type="text"/>
Primary DNS Address :	<input type="text"/>
Secondary DNS Address :	<input type="text"/>
LAN IPv6 ADDRESS SETTINGS :	
Use this section to configure the internal network settings of your router. If you change the LAN IPv6 Address here, you may need to adjust your PC's network settings to access the network again.	
LAN IPv6 Address :	<input type="text"/> /64
LAN IPv6 Link-Local Address : FE80::240:F4FF:FE03:1A9C/64	
ADDRESS AUTOCONFIGURATION SETTINGS	
Use this section to setup IPv6 Autoconfiguration to assign IP addresses to the computers on your network.	
Enable Autoconfiguration :	<input checked="" type="checkbox"/>
Autoconfiguration Type :	Stateless ▼
Router Advertisement Lifetime:	30 <input type="text"/> (minutes)

DHCPv6 (Stateful)

My IPv6 Connection: Select **DHCPv6** from the drop-down menu.

IPv6 DNS Settings: Select either **Obtain DNS server address automatically** or **Use the following DNS Address**.

Primary/Secondary DNS Address: Enter the primary and secondary DNS server addresses.

LAN IPv6 Address: Enter the LAN (local) IPv6 address for the router.

LAN Link-Local Address: Displays the Router's LAN Link-Local Address.

Enable Autoconfiguration: Check to enable the Autoconfiguration feature.

Autoconfiguration Type: Select **Stateful (DHCPv6)** or **Stateless**. Refer to the next page for Stateless.

IPv6 Address Range Start: Enter the start IPv6 Address for the DHCPv6 range for your local computers.

IPv6 Address Range End: Enter the end IPv6 Address for the DHCPv6 range for your local computers.

IPv6 Address Lifetime: Enter the IPv6 Address Lifetime (in minutes).

IPv6 CONNECTION TYPE	
Choose the mode to be used by the router to the IPv6 Internet.	
My IPv6 Connection is :	<input type="text" value="DHCPv6"/>
IPv6 DNS SETTINGS :	
Obtain DNS server address automatically or enter a specific DNS server address.	
<input checked="" type="radio"/> Obtain DNS server address automatically <input type="radio"/> Use the following DNS address	
Primary DNS Address :	<input type="text"/>
Secondary DNS Address :	<input type="text"/>
LAN IPv6 ADDRESS SETTINGS :	
Use this section to configure the internal network settings of your router. If you change the LAN IPv6 Address here, you may need to adjust your PC's network settings to access the network again.	
LAN IPv6 Address :	<input type="text"/> /64
LAN IPv6 Link-Local Address :	FE80::240:F4FF:FE03:1A9C/64
ADDRESS AUTOCONFIGURATION SETTINGS	
Use this section to setup IPv6 Autoconfiguration to assign IP addresses to the computers on your network.	
Enable Autoconfiguration :	<input checked="" type="checkbox"/>
Autoconfiguration Type :	<input type="text" value="Stateful (DHCPv6)"/>
IPv6 Address Range(Start):	<input type="text"/> :: <input type="text"/>
IPv6 Address Range(End):	<input type="text"/> :: <input type="text"/>
IPv6 Address Lifetime:	<input type="text" value="30"/> (minutes)

DHCPv6 (Stateless)

My IPv6 Connection: Select **DHCPv6** from the drop-down menu.

IPv6 DNS Settings: Select either **Obtain DNS server address automatically** or **Use the following DNS Address**.

Primary/Secondary DNS Address: Enter the primary and secondary DNS server addresses.

LAN IPv6 Address: Enter the LAN (local) IPv6 address for the router.

LAN Link-Local Address: Displays the Router's LAN Link-Local Address.

Enable Autoconfiguration: Check to enable the Autoconfiguration feature.

Autoconfiguration Type: Select **Stateless**. Refer to the previous page for Stateful.

Router Advertisement Lifetime: Enter the Router Advertisement Lifetime (in minutes).

IPv6 CONNECTION TYPE	
Choose the mode to be used by the router to the IPv6 Internet.	
My IPv6 Connection is :	<input type="text" value="DHCPv6"/>
IPv6 DNS SETTINGS :	
Obtain DNS server address automatically or enter a specific DNS server address.	
<input checked="" type="radio"/> Obtain DNS server address automatically <input type="radio"/> Use the following DNS address	
Primary DNS Address :	<input type="text"/>
Secondary DNS Address :	<input type="text"/>
LAN IPv6 ADDRESS SETTINGS :	
Use this section to configure the internal network settings of your router. If you change the LAN IPv6 Address here, you may need to adjust your PC's network settings to access the network again.	
LAN IPv6 Address :	<input type="text"/> /64
LAN IPv6 Link-Local Address : FE80::218:E7FF:FE6A:182C/64	
ADDRESS AUTOCONFIGURATION SETTINGS	
Use this section to setup IPv6 Autoconfiguration to assign IP addresses to the computers on your network.	
Enable Autoconfiguration :	<input checked="" type="checkbox"/>
Autoconfiguration Type :	<input type="text" value="Stateless"/>
Router Advertisement Lifetime:	<input type="text" value="30"/> (minutes)

IPv6 over PPPoE (Stateful)

My IPv6 Connection: Select **PPPoE** from the drop-down menu.

PPPoE: Enter the PPPoE account settings supplied by your Internet provider (ISP).

Address Mode: Select **Static** if your ISP assigned you the IP address, subnet mask, gateway, and DNS server addresses. In most cases, select **Dynamic**.

IP Address: Enter the IP address (Static PPPoE only).

User Name: Enter your PPPoE user name.

Password: Enter your PPPoE password and then retype the password in the next box.

Service Name: Enter the ISP Service Name (optional).

Reconnection Mode: Select either **Always-on**, **On-Demand**, or **Manual**.

MTU: Maximum Transmission Unit - you may need to change the MTU for optimal performance with your specific ISP. 1500 is the default MTU.

Maximum Idle Time: Enter a maximum idle time during which the Internet connection is maintained during inactivity. To disable this feature, enable Auto-reconnect.

IPv6 DNS Settings: Select either **Obtain DNS server address automatically** or **Use the following DNS Address**.

Primary/Secondary DNS Address: Enter the primary and secondary DNS server addresses.

LAN IPv6 Address: Enter the LAN (local) IPv6 address for the router.

LAN Link-Local Address: Displays the Router's LAN Link-Local Address.

Enable Autoconfiguration: Check to enable the Autoconfiguration feature.

IPv6 CONNECTION TYPE

Choose the mode to be used by the router to the IPv6 Internet.

My IPv6 Connection is : PPPoE

PPPoE :

Enter the information provided by your Internet Service Provider (ISP).

Address Mode ☒ Dynamic IP ☐ Static IP

IP Address :

User Name :

Password :

Verify Password :

Service Name : (optional)

Reconnect Mode : ☐ Always on ☒ On demand ☐ Manual

Maximum Idle Time : (minutes, 0=infinite)

MTU : (bytes)

IPv6 DNS SETTINGS :

Obtain DNS server address automatically or enter a specific DNS server address.

☐ Obtain DNS server address automatically

☒ Use the following DNS address

Primary DNS Address :

Secondary DNS Address :

LAN IPv6 ADDRESS SETTINGS :

Use this section to configure the internal network settings of your router. If you change the LAN IPv6 Address here, you may need to adjust your PC's network settings to access the network again.

LAN IPv6 Address : /64

LAN IPv6 Link-Local Address : /64

ADDRESS AUTOCONFIGURATION SETTINGS

Use this section to setup IPv6 Autoconfiguration to assign IP addresses to the computers on your network.

Enable Autoconfiguration : ☒

Autoconfiguration Type : Stateful (DHCPv6)

IPv6 Address Range(Start): ::

IPv6 Address Range(End): ::

IPv6 Address Lifetime: (minutes)

Autoconfiguration Type: Select **Stateful (DHCPv6)** or **Stateless**. Refer to the next page for Stateless.

IPv6 Address Range Start: Enter the start IPv6 Address for the DHCPv6 range for your local computers.

IPv6 Address Range End: Enter the end IPv6 Address for the DHCPv6 range for your local computers.

IPv6 Address Lifetime: Enter the IPv6 Address Lifetime (in minutes).

IPv6 over PPPoE (Stateless)

My IPv6 Connection: Select **PPPoE** from the drop-down menu.

PPPoE: Enter the PPPoE account settings supplied by your Internet provider (ISP).

Address Mode: Select **Static** if your ISP assigned you the IP address, subnet mask, gateway, and DNS server addresses. In most cases, select **Dynamic**.

IP Address: Enter the IP address (Static PPPoE only).

User Name: Enter your PPPoE user name.

Password: Enter your PPPoE password and then retype the password in the next box.

Service Name: Enter the ISP Service Name (optional).

Reconnection Mode: Select either **Always-on**, **On-Demand**, or **Manual**.

Maximum Idle Time: Enter a maximum idle time during which the Internet connection is maintained during inactivity. To disable this feature, enable Auto-reconnect.

MTU: Maximum Transmission Unit - you may need to change the MTU for optimal performance with your specific ISP. 1500 is the default MTU.

IPv6 DNS Settings: Select either **Obtain DNS server address automatically** or **Use the following DNS Address**.

Primary/Secondary DNS Address: Enter the primary and secondary DNS server addresses.

LAN IPv6 Address: Enter the LAN (local) IPv6 address for the router.

LAN Link-Local Address: Displays the Router's LAN Link-Local Address.

IPv6 CONNECTION TYPE

Choose the mode to be used by the router to the IPv6 Internet.

My IPv6 Connection is : PPPoE

PPPOE :

Enter the information provided by your Internet Service Provider (ISP).

Address Mode ☒ Dynamic IP ☐ Static IP

IP Address :

User Name :

Password :

Verify Password :

Service Name : (optional)

Reconnect Mode : ☐ Always on ☒ On demand ☐ Manual

Maximum Idle Time : (minutes, 0=infinite)

MTU : (bytes)

IPv6 DNS SETTINGS :

Obtain DNS server address automatically or enter a specific DNS server address.

☒ Obtain DNS server address automatically

☐ Use the following DNS address

Primary DNS Address :

Secondary DNS Address :

LAN IPv6 ADDRESS SETTINGS :

Use this section to configure the internal network settings of your router. If you change the LAN IPv6 Address here, you may need to adjust your PC's network settings to access the network again.

LAN IPv6 Address : /64

LAN IPv6 Link-Local Address : /64

ADDRESS AUTOCONFIGURATION SETTINGS

Use this section to setup IPv6 Autoconfiguration to assign IP addresses to the computers on your network.

Enable Autoconfiguration : ☒

Autoconfiguration Type : Stateless

Router Advertisement Lifetime: (minutes)

Enable Autoconfiguration: Check to enable the Autoconfiguration feature.

Autoconfiguration Type: Select **Stateful (DHCPv6)** or **Stateless**.

Router Advertisement Lifetime: Enter the Router Advertisement Lifetime (in minutes).

6 to 4 Tunneling (Stateful)

My IPv6 Connection: Select **6 to 4** from the drop-down menu.

6 to 4 Settings: Enter the IPv6 settings supplied by your Internet provider (ISP).

Primary/Secondary DNS Address: Enter the primary and secondary DNS server addresses.

LAN IPv6 Address: Enter the LAN (local) IPv6 address for the router.

LAN Link-Local Address: Displays the Router's LAN Link-Local Address.

Enable Autoconfiguration: Check to enable the Autoconfiguration feature.

Autoconfiguration Type: Select **Stateful (DHCPv6)** or **Stateless**. Refer to the next page for Stateless.

IPv6 Address Range Start: Enter the start IPv6 Address for the DHCPv6 range for your local computers.

IPv6 Address Range End: Enter the end IPv6 Address for the DHCPv6 range for your local computers.

IPv6 Address Lifetime: Enter the IPv6 Address Lifetime (in minutes).

IPv6 CONNECTION TYPE	
Choose the mode to be used by the router to the IPv6 Internet.	
My IPv6 Connection is :	6 to 4 ▼
6to4 SETTINGS :	
Enter the IPv6 address information provided by your Internet Service Provider (ISP).	
6to4 Address :	0:0:0:0:0:0:0
Primary DNS Address :	<input type="text"/>
Secondary DNS Address :	<input type="text"/>
LAN IPv6 ADDRESS SETTINGS :	
Use this section to configure the internal network settings of your router. If you change the LAN IPv6 Address here, you may need to adjust your PC's network settings to access the network again.	
LAN IPv6 Address :	2002:0:0:0001 ::1/64
LAN IPv6 Link-Local Address :	FE80::240:F4FF:FE03:1A9C/64
ADDRESS AUTOCONFIGURATION SETTINGS	
Use this section to setup IPv6 Autoconfiguration to assign IP addresses to the computers on your network.	
Enable Autoconfiguration :	<input checked="" type="checkbox"/>
Autoconfiguration Type :	Stateful (DHCPv6) ▼
IPv6 Address Range(Start):	2002:0:0:0001 :: <input type="text"/>
IPv6 Address Range(End):	2002:0:0:0001 :: <input type="text"/>
IPv6 Address Lifetime:	30 (minutes)

6 to 4 Tunneling (Stateless)

My IPv6 Connection: Select **6 to 4** from the drop-down menu.

6 to 4 Settings: Enter the IPv6 settings supplied by your Internet provider (ISP).

Primary/Secondary DNS Address: Enter the primary and secondary DNS server addresses.

LAN IPv6 Address: Enter the LAN (local) IPv6 address for the router.

LAN Link-Local Address: Displays the Router's LAN Link-Local Address.

Enable Autoconfiguration: Check to enable the Autoconfiguration feature.

Autoconfiguration Type: Select **Stateless**. Refer to the previous page for Stateful.

Router Advertisement Lifetime: Enter the Router Advertisement Lifetime (in minutes).

IPv6 CONNECTION TYPE	
Choose the mode to be used by the router to the IPv6 Internet.	
My IPv6 Connection is :	6 to 4 ▼
6to4 SETTINGS :	
Enter the IPv6 address information provided by your Internet Service Provider (ISP).	
6to4 Address :	0:0:0:0:0:0:0
Primary DNS Address :	<input type="text"/>
Secondary DNS Address :	<input type="text"/>
LAN IPv6 ADDRESS SETTINGS :	
Use this section to configure the internal network settings of your router. If you change the LAN IPv6 Address here, you may need to adjust your PC's network settings to access the network again.	
LAN IPv6 Address :	2002:0:0:0001 ::1/64
LAN IPv6 Link-Local Address :	FE80::240:F4FF:FE03:1A9C/64
ADDRESS AUTOCONFIGURATION SETTINGS	
Use this section to setup IPv6 Autoconfiguration to assign IP addresses to the computers on your network.	
Enable Autoconfiguration :	<input checked="" type="checkbox"/>
Autoconfiguration Type :	Stateless ▼
Router Advertisement Lifetime:	30 <input type="text"/> (minutes)

IPv6 in IPv4 Tunneling (Stateful)

My IPv6 Connection: Select **IPv6 in IPv4 Tunnel** from the drop-down menu.

IPv6 in IPv4 Tunnel Settings: Enter the settings supplied by your Internet provider (ISP).

LAN IPv6 Address: Enter the LAN (local) IPv6 address for the router.

LAN Link-Local Address: Displays the Router's LAN Link-Local Address.

Enable Autoconfiguration: Check to enable the Autoconfiguration feature.

Autoconfiguration Type: Select **Stateful**. Refer to the previous page for Stateful.

IPv6 Address Range Start: Enter the start IPv6 Address for the DHCPv6 range for your local computers.

IPv6 Address Range End: Enter the end IPv6 Address for the DHCPv6 range for your local computers.

Pv6 Address Lifetime: Enter the Router Advertisement Lifetime (in minutes).

IPv6 CONNECTION TYPE	
Choose the mode to be used by the router to the IPv6 Internet.	
My IPv6 Connection is :	IPv6 in IPv4 Tunnel ▼
IPv6 in IPv4 TUNNEL SETTINGS :	
Enter the IPv6 in IPv4 Tunnel information provided by your Tunnel Broker.	
Remote IPv4 Address :	<input type="text"/>
Remote IPv6 Address :	<input type="text"/>
Local IPv4 Address :	<input type="text"/>
Local IPv6 Address :	<input type="text"/>
Primary DNS Address :	<input type="text"/>
Secondary DNS Address :	<input type="text"/>
LAN IPv6 ADDRESS SETTINGS :	
Use this section to configure the internal network settings of your router. If you change the LAN IPv6 Address here, you may need to adjust your PC's network settings to access the network again.	
LAN IPv6 Address :	<input type="text"/> /64
LAN IPv6 Link-Local Address :	FE80::240:F4FF:FE03:1A9C/64
ADDRESS AUTOCONFIGURATION SETTINGS	
Use this section to setup IPv6 Autoconfiguration to assign IP addresses to the computers on your network.	
Enable Autoconfiguration :	<input checked="" type="checkbox"/>
Autoconfiguration Type :	Stateful (DHCPv6) ▼
IPv6 Address Range(Start):	<input type="text"/> : <input type="text"/>
IPv6 Address Range(End):	<input type="text"/> : <input type="text"/>
IPv6 Address Lifetime:	30 <input type="text"/> (minutes)

IPv6 in IPv4 Tunneling (Stateless)

My IPv6 Connection: Select **IPv6 in IPv4 Tunnel** from the drop-down menu.

IPv6 in IPv4 Tunnel Settings: Enter the settings supplied by your Internet provider (ISP).

LAN IPv6 Address: Enter the LAN (local) IPv6 address for the router.

LAN Link-Local Address: Displays the Router's LAN Link-Local Address.

Enable Autoconfiguration: Check to enable the Autoconfiguration feature.

Autoconfiguration Type: Select **Stateful (DHCPv6)** or **Stateless**. Refer to the next page for Stateless.

IPv6 Address Lifetime: Enter the IPv6 Address Lifetime (in minutes).

IPv6 CONNECTION TYPE
<p>Choose the mode to be used by the router to the IPv6 Internet.</p> <p>My IPv6 Connection is : <input type="text" value="IPv6 in IPv4 Tunnel"/></p>
IPv6 in IPv4 TUNNEL SETTINGS :
<p>Enter the IPv6 in IPv4 Tunnel information provided by your Tunnel Broker.</p> <p>Remote IPv4 Address : <input type="text"/></p> <p>Remote IPv6 Address : <input type="text"/></p> <p>Local IPv4 Address : <input type="text"/></p> <p>Local IPv6 Address : <input type="text"/></p> <p>Primary DNS Address : <input type="text"/></p> <p>Secondary DNS Address : <input type="text"/></p>
LAN IPv6 ADDRESS SETTINGS :
<p>Use this section to configure the internal network settings of your router. If you change the LAN IPv6 Address here, you may need to adjust your PC's network settings to access the network again.</p> <p>LAN IPv6 Address : <input type="text" value="FE80::240:F4FF:FE03:1A9C"/> /64</p> <p>LAN IPv6 Link-Local Address : FE80::240:F4FF:FE03:1A9C/64</p>
ADDRESS AUTOCONFIGURATION SETTINGS
<p>Use this section to setup IPv6 Autoconfiguration to assign IP addresses to the computers on your network.</p> <p>Enable Autoconfiguration : <input checked="" type="checkbox"/></p> <p>Autoconfiguration Type : <input type="text" value="Stateless"/></p> <p>Router Advertisement Lifetime: <input type="text" value="30"/> (minutes)</p>

Stateless Autoconfiguration (Stateless)

My IPv6 Connection: Select **Stateless Autoconfiguration** from the drop-down menu.

IPv6 DNS Settings: Enter the settings supplied by your Internet provider (ISP).

LAN IPv6 Address: Enter the LAN (local) IPv6 address for the router.

LAN Link-Local Address: Displays the Router's LAN Link-Local Address.

Enable Autoconfiguration: Check to enable the Autoconfiguration feature.

Autoconfiguration Type: Select **Stateless**. Refer to the previous page for Stateful.

IPv6 Address Lifetime: Enter the Router Advertisement Lifetime (in minutes).

IPv6 CONNECTION TYPE
Choose the mode to be used by the router to the IPv6 Internet.
My IPv6 Connection is : Stateless Autoconfiguration ▼
IPv6 DNS SETTINGS :
Obtain DNS server address automatically or enter a specific DNS server address.
Primary DNS Address : <input type="text"/>
Secondary DNS Address : <input type="text"/>
LAN IPv6 ADDRESS SETTINGS :
Use this section to configure the internal network settings of your router. If you change the LAN IPv6 Address here, you may need to adjust your PC's network settings to access the network again.
LAN IPv6 Address : <input type="text"/> /64
LAN IPv6 Link-Local Address : FE80::218:E7FF:FE6A:21BE/64
ADDRESS AUTOCONFIGURATION SETTINGS
Use this section to setup IPv6 Autoconfiguration to assign IP addresses to the computers on your network.
Enable Autoconfiguration : <input checked="" type="checkbox"/>
Autoconfiguration Type : Stateless ▼
Router Advertisement Lifetime: 30 (minutes)

Stateless Autoconfiguration (Stateful)

My IPv6 Connection: Select **Stateless Autoconfiguration** from the drop-down menu.

IPv6 DNS Settings: Enter the settings supplied by your Internet provider (ISP).

LAN IPv6 Address: Enter the LAN (local) IPv6 address for the router.

LAN Link-Local Address: Displays the Router's LAN Link-Local Address.

Enable Autoconfiguration: Check to enable the Autoconfiguration feature.

Autoconfiguration Type: Select **Stateful**. Refer to the previous page for Stateful.

IPv6 Address Lifetime: Enter the start IPv6 Address for the DHCPv6 range for your local computers.

IPv6 Address Range Start: Enter the end IPv6 Address for the DHCPv6 range for your local computers.

IPv6 Address Lifetime: Enter the Router Advertisement Lifetime (in minutes).

IPv6 CONNECTION TYPE	
Choose the mode to be used by the router to the IPv6 Internet.	
My IPv6 Connection is :	Stateless Autoconfiguration ▼
IPv6 DNS SETTINGS :	
Obtain DNS server address automatically or enter a specific DNS server address.	
Primary DNS Address :	<input type="text"/>
Secondary DNS Address :	<input type="text"/>
LAN IPv6 ADDRESS SETTINGS :	
Use this section to configure the internal network settings of your router. If you change the LAN IPv6 Address here, you may need to adjust your PC's network settings to access the network again.	
LAN IPv6 Address :	<input type="text"/> /64
LAN IPv6 Link-Local Address : FE80::218:E7FF:FE6A:21BE/64	
ADDRESS AUTOCONFIGURATION SETTINGS	
Use this section to setup IPv6 Autoconfiguration to assign IP addresses to the computers on your network.	
Enable Autoconfiguration :	<input checked="" type="checkbox"/>
Autoconfiguration Type :	Stateful (DHCPv6) ▼
IPv6 Address Range(Start):	<input type="text"/> :: <input type="text"/>
IPv6 Address Range(End):	<input type="text"/> :: <input type="text"/>
IPv6 Address Lifetime:	30 <input type="text"/> (minutes)

Administrator Settings

This page will allow you to change the Administrator and User passwords. You can also enable Remote Management. There are two accounts that can access the management interface through the web browser. The accounts are admin and user. Admin has read/write access while user has read-only access. User can only view the settings but cannot make any changes. Only the admin account has the ability to change both admin and user account passwords.

Admin Password: Enter a new password for the Administrator Login Name. The administrator can make changes to the settings.

User Password: Enter the new password for the User login. If you login as the User, you cannot change the settings (you can only view them).

Gateway Name: Enter a name for the DIR-655 router.

Enable Graphical Authentication: Enables a challenge-response test to require users to type letters or numbers from a distorted image displayed on the screen to prevent online hackers and unauthorized users from gaining access to your router's network settings.

Enable HTTPS Server: Check to enable HTTPS to connect to the router securely.

Enable Remote Management: Remote management allows the DIR-655 to be configured from the Internet by a web browser. A username and password is still required to access the Web-Management interface. In general, only a member of your network can browse the built-in web pages to perform Administrator tasks. This feature enables you to perform Administrator tasks from the remote (Internet) host. The port number used to access the DIR-655.

Remote Admin Inbound Filter: Example: `http://x.x.x.x:8080` whereas x.x.x.x is the Internet IP address of the DIR-655 and 8080 is the port used for the Web Management interface. If you have enabled **HTTPS Server** and checked **Use HTTPS**, you must enter **https://** as part of the URL to access the router remotely.

Details: This section will list any rules that are created. You may click the **Edit** icon to change the settings or enable/disable the rule, or click the **Delete** icon to remove the rule.

Product Page: DIR-655 Hardware Version: B1 Firmware Version: 2.00NA

D-Link

DIR-655 // SETUP ADVANCED TOOLS STATUS SUPPORT

ADMIN

ADMINISTRATOR SETTINGS

The "admin" and "user" accounts can access the management interface. The admin has read/write access and can change passwords, while the user has read-only access. By default there is no password configured. It is highly recommended that you create a password to keep your router secure.

Save Settings Don't Save Settings

ADMIN PASSWORD

Please enter the same password into both boxes, for confirmation.

Password :

Verify Password :

USER PASSWORD

Please enter the same password into both boxes, for confirmation.

Password :

Verify Password :

SYSTEM NAME

Gateway Name :

ADMINISTRATION

Enable Graphical Authentication : ☐

Enable HTTPS Server : ☐

Enable Remote Management : ☐

Remote Admin Port : Use HTTPS ☐

Remote Admin Inbound Filter :

Details :

Helpful Hints ...

For security reasons, it is recommended that you change the password for the Admin and User accounts. Be sure to write down the new and passwords to avoid having to reset the router in case they are forgotten.

Enabling Remote Management, allows you or others to change the router configuration from a computer on the Internet.

Choose a port to open for remote management.

Select a filter that controls access as needed for this admin port. If you do not see the filter you need in the list of filters, go to the **Advanced** **Inbound Filter** screen and create a new filter.

More ...

WIRELESS

Time Settings

The Time Configuration option allows you to configure, update, and maintain the correct time on the internal system clock. From this section you can set the time zone that you are in and set the Time Server. Daylight Saving can also be configured to automatically adjust the time when needed.

Time Zone: Select the Time Zone from the drop-down menu.

Daylight Saving: To select Daylight Saving time manually, select enabled or disabled, and enter a start date and an end date for daylight saving time.

Enable NTP Server: NTP is short for Network Time Protocol. NTP synchronizes computer clock times in a network of computers. Check this box to use a NTP server. This will only connect to a server on the Internet, not a local server.

NTP Server Used: Enter the NTP server or select one from the drop-down menu.

Manual: To manually input the time, enter the values in these fields for the Year, Month, Day, Hour, Minute, and Second and then click **Set Time**. You can also click **Copy Your Computer's Time Settings**.

Product Page: DIR-825 Hardware Version: B1 Firmware Version: 2.00NA

D-Link

DIR-655 // SETUP ADVANCED **TOOLS** STATUS SUPPORT

ADMIN
TIME
SYSLOG
EMAIL SETTINGS
SYSTEM
FIRMWARE
DYNAMIC DNS
SYSTEM CHECK
SCHEDULES

TIME

The Time Configuration option allows you to configure, update, and maintain the correct time on the internal system clock. From this section you can set the time zone that you are in and set the NTP (Network Time Protocol) Server. Daylight Saving can also be configured to automatically adjust the time when needed.

Save Settings Don't Save Settings

TIME CONFIGURATION

Current Router Time : Tuesday, November 24, 2009 5:13:47 PM

Time Zone : (GMT-08:00) Pacific Time (US/Canada), Tijuana

Enable Daylight Saving : ☐

Daylight Saving Offset : +1:00

Daylight Saving Dates :

	Month	Week	Day of Week	Time
DST Start	Mar	3rd	Sun	1:00 AM
DST End	Nov	2nd	Sun	1:00 AM

AUTOMATIC TIME CONFIGURATION

Enable NTP Server : ☐

NTP Server Used : << Select NTP Server

SET THE DATE A.D TIME MANUALLY

Date And Time :

Year	Month	Day	Hour	Minute	Second	PM
2009	Nov	24	05	13	40	PM

Copy Your Computer's Time Settings

WIRELESS

Helpful Hints ...

Good timekeeping is important for accurate logs and scheduled firewall rules.

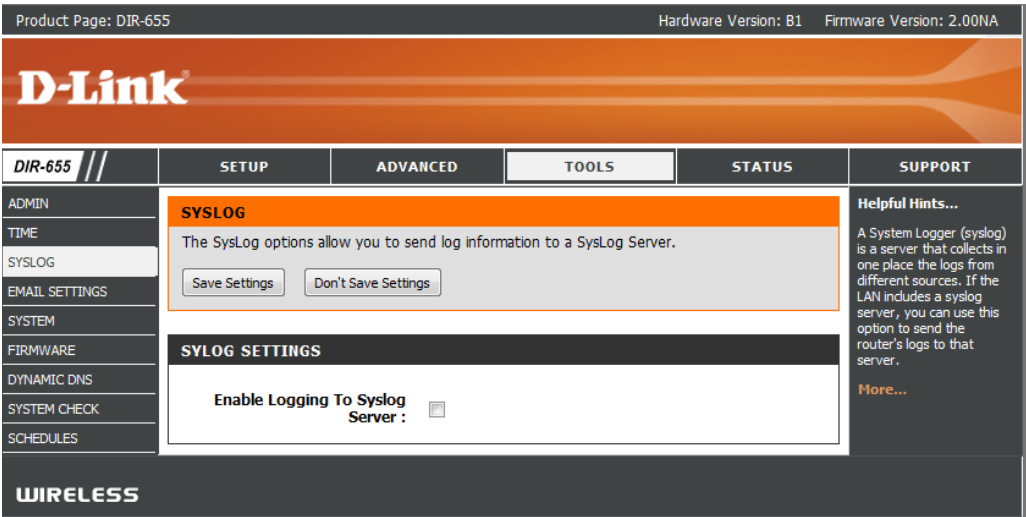
[More...](#)

SysLog

The Broadband Router keeps a running log of events and activities occurring on the Router. You may send these logs to a SysLog server on your network.

Enable Logging to SysLog Server: Check this box to send the router logs to a SysLog Server.

SysLog Server IP Address: The address of the SysLog server that will be used to send the logs. You may also select your computer from the drop-down menu (only if receiving an IP address from the router via DHCP).



Email Settings

The Email feature can be used to send the system log files, router alert messages, and firmware update notification to your email address.

Enable Email Notification: When this option is enabled, router activity logs are e-mailed to a designated email address.

From Email Address: This email address will appear as the sender when you receive a log file or firmware upgrade notification via email.

To Email Address: Enter the email address where you want the email sent.

SMTP Server Address: Enter the SMTP server address for sending email. If your SMTP server requires authentication, select this option.

Enable Authentication: Check this box if your SMTP server requires authentication.

Account Name: Enter your account for sending email.

Password: Enter the password associated with the account. Re-type the password associated with the account.

On Log Full: When this option is selected, logs will be sent via email when the log is full.

On Schedule: Selecting this option will send the logs via email according to schedule.

Schedule: This option is enabled when On Schedule is selected. You can select a schedule from the list of defined schedules. To create a schedule, go to **Tools > Schedules**.

Product Page: DIR-655 Hardware Version: B1 Firmware Version: 2.00NA

D-Link

DIR-655	SETUP	ADVANCED	TOOLS	STATUS	SUPPORT
ADMIN	EMAIL SETTINGS The Email feature can be used to send the system log files, router alert messages, and firmware update notification to your email address. <input type="button" value="Save Settings"/> <input type="button" value="Don't Save Settings"/>				Helpful Hints... You may want to make the email settings similar to those of your email client program. More...
TIME	EMAIL NOTIFICATION Enable Email Notification : <input type="checkbox"/>				
SYSLOG	EMAIL SETTINGS From Email Address : <input type="text"/> To Email Address : <input type="text"/> SMTP Server Address : <input type="text"/> Enable Authentication : <input type="checkbox"/> Account Name : <input type="text" value="user"/> Password : <input type="password" value="****"/> Verify Password : <input type="password" value="****"/>				
EMAIL SETTINGS	EMAIL LOG WHEN FULL OR ON SCHEDULE On Log Full : <input type="checkbox"/> On Schedule : <input type="checkbox"/> Schedule : <input type="text" value="Never"/> Detail : <input type="text" value="undefined"/>				
SYSTEM					
FIRMWARE					
DYNAMIC DNS					
SYSTEM CHECK					
SCHEDULES					

WIRELESS

System Settings

Save Settings to Local Hard Drive: Use this option to save the current router configuration settings to a file on the hard disk of the computer you are using. First, click the Save button. You will then see a file dialog, where you can select a location and file name for the settings.

Load Settings from Local Hard Drive: Use this option to load previously saved router configuration settings. First, use the Browse control to find a previously save file of configuration settings. Then, click the Load button to transfer those settings to the router.

Restore to Factory Default Settings: This option will restore all configuration settings back to the settings that were in effect at the time the router was shipped from the factory. Any settings that have not been saved will be lost, including any rules that you have created. If you want to save the current router configuration settings, use the Save button above.

Reboot Device: Click to reboot the router.

Product Page: DIR-655 Hardware Version: B1 Firmware Version: 2.00NA

D-Link

DIR-655 //	SETUP	ADVANCED	TOOLS	STATUS	SUPPORT
ADMIN	SYSTEM SETTINGS <p>The System Settings section allows you to reboot the device, or restore the router to the factory default settings. Restoring the unit to the factory default settings will erase all settings, including any rules that you have created.</p> <p>The current system settings can be saved as a file onto the local hard drive. The saved file or any other saved setting file created by device can be uploaded into the unit.</p>				Helpful Hints... <p>Once your router is configured the way you want it, you can save the configuration settings to a configuration file.</p> <p>You might need this file so that you can load your configuration later in the event that the router's default settings are restored.</p> <p>To save the configuration, click the Save Configuration button.</p> <p>More...</p>
TIME					
SYSLOG					
EMAIL SETTINGS					
SYSTEM					
FIRMWARE					
DYNAMIC DNS					
SYSTEM CHECK					
SCHEDULES	SYSTEM SETTINGS				
<p>Save To Local Hard Drive: <input type="button" value="Save Configuration"/></p>					
<p>Load From Local Hard Drive: <input type="text"/> <input type="button" value="Browse..."/></p> <p><input type="button" value="Restore Configuration from File"/></p>					
<p>Restore To Factory Default: <input type="button" value="Restore Factory Defaults"/></p> <p>Restore all settings to the factory defaults.</p>					
<p>Reboots the Device: <input type="button" value="Reboot the Device"/></p>					

WIRELESS

Update Firmware

You can upgrade the firmware of the Router here. Make sure the firmware you want to use is on the local hard drive of the computer. Click on **Browse** to locate the firmware file to be used for the update. Please check the D-Link support site for firmware updates at <http://support.dlink.com>. You can download firmware upgrades to your hard drive from the D-Link support site.

Firmware Upgrade: Click on **Check Online Now for Latest Firmware Version** to find out if there is an updated firmware; if so, download the new firmware to your hard drive.

Browse: After you have downloaded the new firmware, click **Browse** to locate the firmware update on your hard drive. Click **Upload** to complete the firmware upgrade.

Notifications Options: Check **Automatically Check Online for Latest Firmware Version** to have the router check automatically to see if there is a new firmware upgrade.

Check **Email Notification of Newer Firmware Version** to have the router send an email when there is a new firmware available.

Product Page: DIR-655

Hardware Version: B1 Firmware Version: 2.00NA

DIR-655 //	SETUP	ADVANCED	TOOLS	STATUS	SUPPORT
------------	-------	----------	-------	--------	---------

ADMIN
TIME
SYSLOG
EMAIL SETTINGS
SYSTEM
FIRMWARE
DYNAMIC DNS
SYSTEM CHECK
SCHEDULES

FIRMWARE

There may be new firmware for your DIR-655 to improve functionality and performance.

To upgrade the firmware, locate the upgrade file on the local hard drive with the Browse button. Once you have found the file to be used, click the Upload button below to start the firmware upgrade.

FIRMWARE INFORMATION

Current Firmware Version : 2.00NA
Current Firmware Date : Tue, 24, Nov, 2009
Check Online Now for Latest Firmware Version :

FIRMWARE UPGRADE

Note: Some firmware upgrades reset the configuration options to the factory defaults. Before performing an upgrade, be sure to save the current configuration from the [Tools](#) > [System](#) screen.

To upgrade the firmware, your PC must have a wired connection to the router. Enter the name of the firmware upgrade file, and click on the Upload button.

Helpful Hints...

Firmware updates are released periodically to improve the functionality of your router and to add features. If you run into a problem with a specific feature of the router, check if updated firmware is available for your router.

[More...](#)

WIRELESS

DDNS

The DDNS feature allows you to host a server (Web, FTP, Game Server, etc...) using a domain name that you have purchased (www.whateveryournameis.com) with your dynamically assigned IP address. Most broadband Internet Service Providers assign dynamic (changing) IP addresses. Using a DDNS service provider, your friends can enter in your domain name to connect to your server no matter what your IP address is.

DDNS: Dynamic Domain Name System is a method of keeping a domain name linked to a changing IP Address. Check the box to enable DDNS.

Server Address: Choose your DDNS provider from the drop down menu.

Host Name: Enter the Host Name that you registered with your DDNS service provider.

Username or Key: Enter the Username for your DDNS account.

Password or Key: Enter the Password for your DDNS account.

Timeout: Enter a time (in hours).

Product Page: DIR-655 Hardware Version: B1 Firmware Version: 2.00NA

D-Link

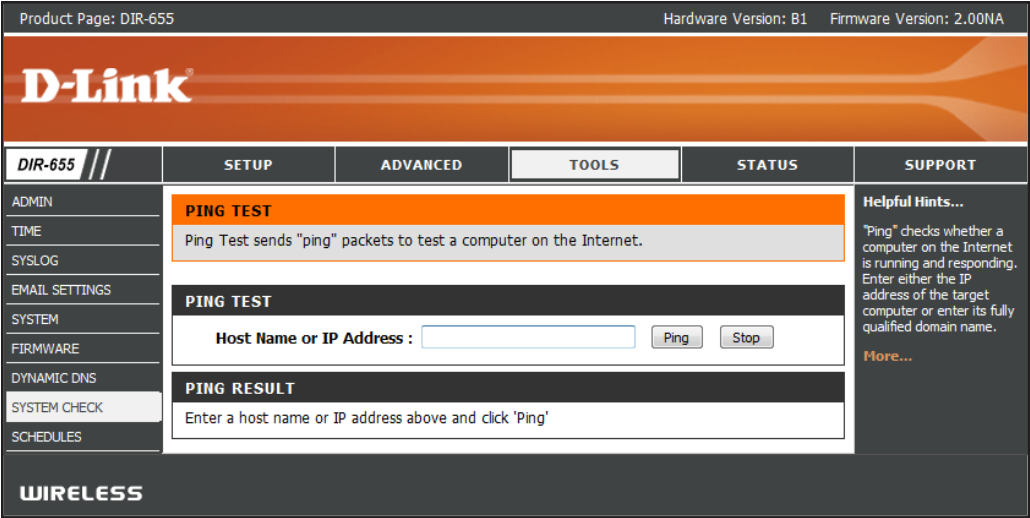
DIR-655	SETUP	ADVANCED	TOOLS	STATUS	SUPPORT
ADMIN TIME SYSLOG EMAIL SETTINGS SYSTEM FIRMWARE DYNAMIC DNS SYSTEM CHECK SCHEDULES	<h3>DYNAMIC DNS</h3> <p>The DDNS feature allows you to host a server (Web, FTP, Game Server, etc...) using a domain name that you have purchased (www.whateveryournameis.com) with your dynamically assigned IP address. Most broadband Internet Service Providers assign dynamic (changing) IP addresses. Using a DDNS service provider, your friends can enter your host name to connect to your game server no matter what your IP address is.</p> <p>Sign up for D-Link's Free DDNS service at www.dlinkddns.com.</p> <p> <input type="button" value="Save Settings"/> <input type="button" value="Don't Save Settings"/> </p> <h3>DYNAMIC DNS SETTINGS</h3> <p> Enable Dynamic DNS : <input type="checkbox"/> </p> <p> Server Address : dlinkddns.com(Free) << Select Dynamic DNS Server </p> <p> Host Name : <input type="text"/> </p> <p> Username or Key : <input type="text"/> </p> <p> Password or Key : <input type="text"/> </p> <p> Verify Password or Key : <input type="text"/> </p> <p> Timeout : 576 (hours) </p> <p> Status : Disconnected </p>				Helpful Hints... <p>To use this feature, you must first have a Dynamic DNS account from one of the providers in the drop down menu.</p> <p>More...</p>

WIRELESS

System Check

Ping Test: The Ping Test is used to send Ping packets to test if a computer is on the Internet. Enter the IP Address that you wish to Ping, and click **Ping**.

Ping Results: The results of your ping attempts will be displayed here.



Schedules

Name: Enter a name for your new schedule.

Days: Select a day, a range of days, or All Week to include every day.

Time: Check **All Day - 24hrs** or enter a start and end time for your schedule.

Save: Click **Save** to save your schedule. You must click Save Settings at the top for your schedules to go into effect.

Schedule Rules List: The list of schedules will be listed here. Click the **Edit** icon to make changes or click the **Delete** icon to remove the schedule.

Product Page: DIR-655 Hardware Version: B1 Firmware Version: 2.00NA

D-Link

DIR-655	SETUP	ADVANCED	TOOLS	STATUS	SUPPORT
---------	-------	----------	-------	--------	---------

ADMIN
TIME
SYSLOG
EMAIL SETTINGS
SYSTEM
FIRMWARE
DYNAMIC DNS
SYSTEM CHECK
SCHEDULES

SCHEDULES

The Schedule configuration option is used to manage schedule rules for various firewall and parental control features.

ADD SCHEDULE RULE

Name :

Day(s) : ☐ All Week ☒ Select Day(s)

☐ Sun ☐ Mon ☐ Tue ☐ Wed ☐ Thu ☐ Fri ☐ Sat

All Day - 24 hrs : ☐

Start Time : : AM (hour:minute, 12 hour time)

End Time : : AM (hour:minute, 12 hour time)

SCHEDULE RULES LIST :

Name :	Day(s) :	Time Frame :
--------	----------	--------------

Helpful Hints...

Schedules are used with a number of other features to define when those features are in effect.

Give each schedule a name that is meaningful to you. For example, a schedule for Monday through Friday from 3:00pm to 9:00pm, might be called "After School".

Click **Save** to add a completed schedule to the list below.

Click **Edit** icon to change an existing schedule.

Click **Delete** icon to permanently delete a schedule.

[More...](#)

WIRELESS

Device Information

This page displays the current information for the DIR-655. It will display the LAN, WAN (Internet), and Wireless information.

If your Internet connection is set up for a Dynamic IP address then a **Release** button and a **Renew** button will be displayed. Use **Release** to disconnect from your ISP and use **Renew** to connect to your ISP.

If your Internet connection is set up for PPPoE, a **Connect** button and a **Disconnect** button will be displayed. Use **Disconnect** to drop the PPPoE connection and use **Connect** to establish the PPPoE connection.

General: Displays the router's time and firmware version.

WAN: Displays the MAC address and the public IP settings for the router.

LAN: Displays the MAC address and the private (local) IP settings for the router.

Wireless LAN: Displays the wireless MAC address and your wireless settings such as SSID and Channel.

LAN Computers: Displays computers and devices that are connected to the router via Ethernet and that are receiving an IP address assigned by the router (DHCP).

IGMP Multicast Memberships: Displays the Multicast Group IP Address.

Product Page: DIR-655 Hardware Version: B1 Firmware Version: 2.00NA

D-Link

DIR-655	SETUP	ADVANCED	TOOLS	STATUS	SUPPORT								
DEVICE INFO LOGS STATISTICS INTERNET SESSIONS WIRELESS	DEVICE INFORMATION All of your Internet and network connection details are displayed on this page. The firmware version is also displayed here.				Helpful Hints... All of your WAN and LAN connection details are displayed here. More...								
GENERAL Time : Tuesday, November 24, 2009 5:15:45 PM Firmware Version : 2.00NA , Tue, 24, Nov, 2009													
WAN Connection Type: PPPoE Cable Status: Connected Network Status: Established StreamEngine: Enabled Connection Up Time: 0 Day, 0:45:17 <input type="button" value="Connect"/> <input type="button" value="Disconnect"/> MAC Address: 00:16:17:45:11:af IP Address: 69.235.94.124 Subnet Mask: 255.255.255.255 Default Gateway: 69.235.95.254 Primary DNS Server: 68.94.156.1 Secondary DNS Server: 68.94.157.1 Advanced DNS: Disabled													
LAN MAC Address: 00:18:ab:6a:27:92 IP Address: 192.168.0.1 Subnet Mask: 255.255.255.0 DHCP Server: Enabled													
WIRELESS LAN Wireless Radio: Enabled 802.11 Mode: Mixed 802.11n, 802.11g and 802.11b Channel Width: 20MHz Channel: 11 WISH: Active Wi-Fi Protected Setup: Enabled/Not Configured SSID List: <table border="1"> <thead> <tr> <th>Network Name (SSID)</th> <th>Guest</th> <th>MAC Address</th> <th>Security Mode</th> </tr> </thead> <tbody> <tr> <td>dlink</td> <td>No</td> <td>00:18:ab:6a:27:92</td> <td>disable</td> </tr> </tbody> </table>						Network Name (SSID)	Guest	MAC Address	Security Mode	dlink	No	00:18:ab:6a:27:92	disable
Network Name (SSID)	Guest	MAC Address	Security Mode										
dlink	No	00:18:ab:6a:27:92	disable										
LAN COMPUTERS <table border="1"> <thead> <tr> <th>IP Address</th> <th>Name (if any)</th> <th>MAC</th> </tr> </thead> <tbody> <tr> <td>192.168.0.100</td> <td>PM1-PC</td> <td>00:16:17:45:11:AF</td> </tr> </tbody> </table>						IP Address	Name (if any)	MAC	192.168.0.100	PM1-PC	00:16:17:45:11:AF		
IP Address	Name (if any)	MAC											
192.168.0.100	PM1-PC	00:16:17:45:11:AF											
IGMP MULTICAST MEMBERSHIPS <table border="1"> <thead> <tr> <th>Multicast Group Address</th> </tr> </thead> <tbody> </tbody> </table>						Multicast Group Address							
Multicast Group Address													

WIRELESS

Log

The router automatically logs (records) events of possible interest in its internal memory. If there isn't enough internal memory for all events, logs of older events are deleted but logs of the latest events are retained. The Logs option allows you to view the router logs. You can define what types of events you want to view and the level of the events to view. This router also has external Syslog Server support so you can send the log files to a computer on your network that is running a Syslog utility.

What to View: You can select the types of messages that you want to display from the log. Firewall & Security, System, and Router Status messages can be selected.

View Levels: There are three levels of message importance: **Informational**, **Warning**, and **Critical**. Select the levels that you want displayed in the log.

Apply Log Settings: Will filter the log results so that only the selected options appear.

Refresh: Updates the log details on the screen so it displays any recent activity.

Clear: Clears all of the log contents.

Email Now: This option will send a copy of the router log to the email address configured in the Tools > Email screen.

Save Log: This option will save the router to a log file on your computer.

Product Page: DIR-655 Hardware Version: B1 Firmware Version: 2.00NA

D-Link

DIR-655 // SETUP ADVANCED TOOLS STATUS SUPPORT

LOGS

Use this option to view the router logs. You can define what types of events you want to view and the event levels to view. This router also has internal syslog server support so you can send the log files to a computer on your network that is running a syslog utility.

LOG OPTIONS

Log Type :

- ☒ System Activity
- ☐ Debug Information
- ☒ Attacks
- ☐ Dropped Packets
- ☒ Notice

Apply Log Settings Now

LOG DETAILS

1 / 12

Priority	Time	Message
info	Nov 24 17:12:32	UDHCPCD Inform: add_lease 192.168.0.100
info	Nov 24 16:51:49	UDHCPCD Inform: add_lease 192.168.0.100
info	Nov 24 16:48:45	UDHCPCD Inform: add_lease 192.168.0.100
info	Nov 24 16:31:02	Exit.
info	Nov 24 16:30:48	Exit.
info	Nov 24 16:30:48	Exit.
info	Nov 24 16:30:48	Exit.
info	Nov 24 16:30:47	UDHCPCD Inform: add_lease 192.168.0.100
info	Nov 24 16:30:36	[228.280000] module arch cleanup nf_conntrack_ftp: OCM instruction memory free of 0 @00000000
info	Nov 24 16:30:36	[228.140000] module arch cleanup nf_nat_ftp: OCM instruction memory free of 0 @00000000

First Page Last Page Previous Next Refresh Clear Email Now Save Log

WIRELESS

Helpful Hints...

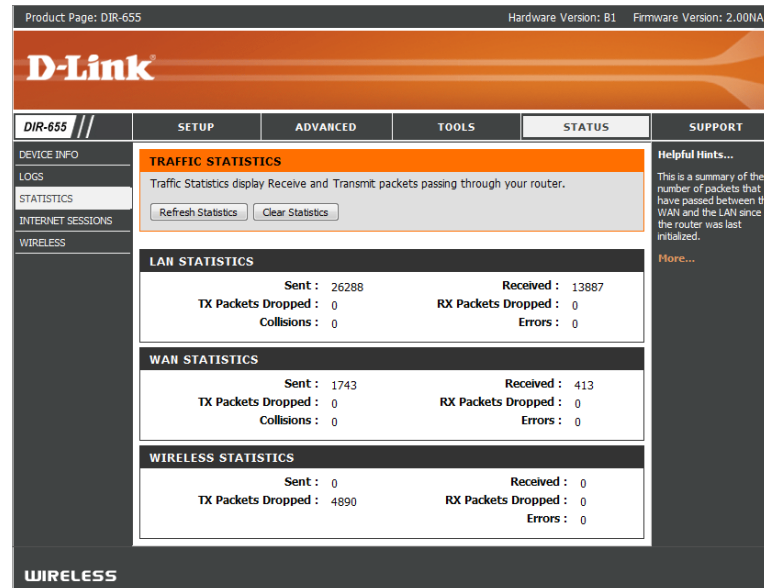
Check the log frequently to detect unauthorized network usage.

You can also have the log mailed to you periodically. Refer to [Tools --> Email](#).

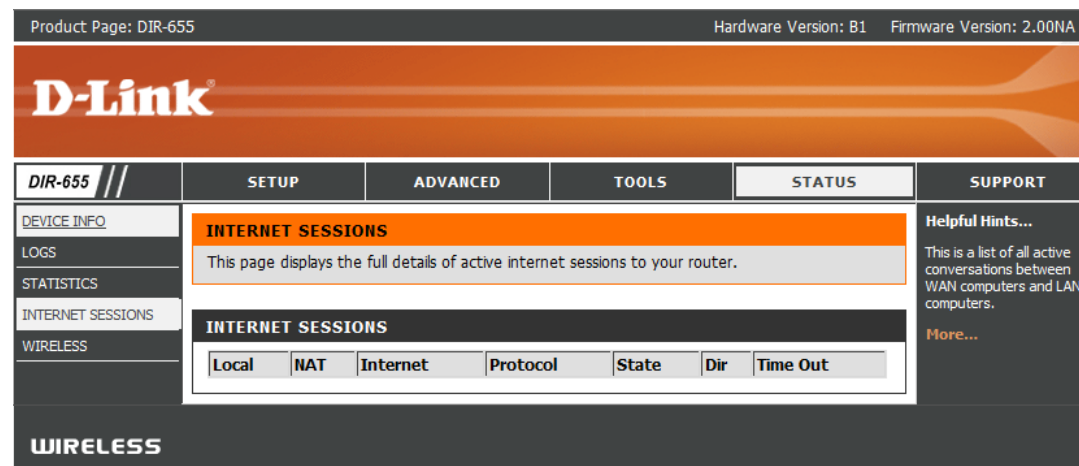
[More...](#)

Stats

The screen below displays the Traffic Statistics. Here you can view the amount of packets that pass through the DIR-655 on both the Internet and the LAN ports. The traffic counter will reset if the device is rebooted.



Active Sessions



Wireless

The wireless client table displays a list of current connected wireless clients. This table also displays the connection time and MAC address of the connected wireless clients.

Product Page: DIR-655

Hardware Version: B1

Firmware Version: 2.00NA

D-Link

DIR-655

SETUP

ADVANCED

TOOLS

STATUS

SUPPORT

DEVICE INFO

LOGS

STATISTICS

INTERNET SESSIONS

WIRELESS

WIRELESS

View the wireless clients that are connected to the router. (A client might linger in the list for a few minutes after an unexpected disconnect.)

NUMBER OF WIRELESS CLIENTS : 0

MAC Address	IP Address	Mode	Rate	Signal(%)
-------------	------------	------	------	-----------

Helpful Hints...

This is a list of all wireless clients that are currently connected to your wireless router.

More...

WIRELESS

Support

Product Page: DIR-655

Hardware Version: B1 Firmware Version: 2.00NA

DIR-655

SETUP

ADVANCED

TOOLS

STATUS

SUPPORT

MENU

SETUP

ADVANCED

TOOLS

STATUS

SUPPORT MENU

- Setup
- Advanced
- Tools
- Status

SETUP HELP

- Internet Connection
- WAN
- Wireless
- Network Settings
- USB Settings

ADVANCED HELP

- Virtual Server
- Port Forwarding
- Application Rules
- QoS Engine
- Access Control
- Website Filter
- Network Filter
- Firewall Settings
- Routing
- Inbound Filter
- Advanced Wireless
- WISH
- Advanced Network
- GUEST ZONE
- IPv6

TOOLS HELP

- Admin
- Time
- Syslog
- Email Settings
- System
- Firmware
- Dynamic DNS
- System Check
- Schedules

STATUS

- Device Info
- Logs
- Statistics
- Internet Sessions

WIRELESS

Wireless Security

This section will show you the different levels of security you can use to protect your data from intruders. The DIR-655 offers the following types of security:

- WPA2™ (Wi-Fi Protected Access 2)
- WPA™ (Wi-Fi Protected Access)
- WPA2-PSK (Pre-Shared Key)
- WPA-PSK (Pre-Shared Key)

What is WPA?

WPA, or Wi-Fi Protected Access, is a Wi-Fi standard that was designed to improve the security features of WEP (Wired Equivalent Privacy).

The 2 major improvements over WEP:

- Improved data encryption through the Temporal Key Integrity Protocol (TKIP). TKIP scrambles the keys using a hashing algorithm and, by adding an integrity-checking feature, ensures that the keys haven't been tampered with. WPA2 is based on 802.11i and uses Advanced Encryption Standard (AES) instead of TKIP.
- User authentication, which is generally missing in WEP, through the extensible authentication protocol (EAP). WEP regulates access to a wireless network based on a computer's hardware-specific MAC address, which is relatively simple to be sniffed out and stolen. EAP is built on a more secure public-key encryption system to ensure that only authorized network users can access the network.

WPA-PSK/WPA2-PSK uses a passphrase or key to authenticate your wireless connection. The key is an alpha-numeric password between 8 and 63 characters long. The password can include symbols (!?*&_) and spaces. This key must be the exact same key entered on your wireless router or access point.

WPA/WPA2 incorporates user authentication through the Extensible Authentication Protocol (EAP). EAP is built on a more secure public key encryption system to ensure that only authorized network users can access the network.

Wireless Security Setup Wizard

To run the security wizard, click on Setup at the top and then click **Launch Wireless Security Setup Wizard**.

Click **Next** to continue.

WIRELESS SETTINGS

The following Web-based wizards are designed to assist you in your wireless network setup and wireless device connection.

Before launching these wizards, please make sure you have followed all steps outlined in the Quick Installation Guide included in the package.

WIRELESS NETWORK SETUP WIZARD

This wizard is designed to assist you in your wireless network setup. It will guide you through step-by-step instructions on how to set up your wireless network and how to make it secure.

Wireless Network Setup Wizard

Note: Some changes made using this Setup Wizard may require you to change some settings on your wireless client adapters so they can still connect to the D-Link Router.

ADD WIRELESS DEVICE WITH WPS (WI-FI PROTECTED SETUP) WIZARD

This wizard is designed to assist you in connecting your wireless device to your wireless router. It will guide you through step-by-step instructions on how to get your wireless device connected. Click the button below to begin.

Add Wireless Device with WPS

MANUAL WIRELESS NETWORK SETUP

If your wireless network is already set up with Wi-Fi Protected Setup, manual configuration of the wireless network will destroy the existing wireless network. If you would like to configure the wireless settings of your new D-Link Systems Router manually, then click on the Manual Wireless Network Setup button below.

Manual Wireless Network Setup

STEP 1: WELCOME TO THE D-LINK WIRELESS SECURITY SETUP WIZARD

Give your network a name, using up to 32 characters.

Network Name (SSID) :

☒ Automatically assign a network key (Recommended)

To prevent outsiders from accessing your network, the router will automatically assign a security (also called WEP or WPA key) to your network.

☐ Manually assign a network key

Use this options if you prefer to create our own key.

Note: All D-Link wireless adapters currently support WPA.

Prev

Next

Cancel

Save

The following screen will show you your Pre-Shared Key to enter on your wireless clients.

Click **Save** to finish the Security Wizard.

SETUP COMPLETE!

Below is a detailed summary of your wireless security settings. Please print this page out, or write the information on a piece of paper, so you can configure the correct settings on your wireless client adapters.

Wireless Network Name (SSID) :	dlink
Security Mode :	Auto (WPA or WPA2) - Personal
Cipher Type :	TKIP and AES
Pre-Shared Key :	9fa2e46b5e9e860843fe7d22398faf16fab24d64d60eb406b0829101495d4939

If you selected WPA-Enterprise, the RADIUS information will be displayed. Click **Save** to finish the Security Wizard.

Configure WPA-Personal (PSK)

It is recommended to enable encryption on your wireless router before your wireless network adapters. Please establish wireless connectivity before enabling encryption. Your wireless signal may degrade when enabling encryption due to the added overhead.

1. Log into the web-based configuration by opening a web browser and entering the IP address of the router (192.168.0.1). Click on **Setup** and then click **Wireless Settings** on the left side.
2. Next to *Security Mode*, select **WPA-Personal**.
3. Next to *WPA Mode*, select **Auto**, **WPA2 Only**, or **WPA Only**. Use **Auto** if you have wireless clients using both WPA and WPA2.
4. Next to *Group Key Update Interval*, enter the amount of time before the group key used for broadcast and multicast data is changed (3600 is default).
5. Next to *Pre-Shared Key*, enter a key (passphrase). The key is entered as a pass-phrase in ASCII format at both ends of the wireless connection. The pass-phrase must be between 8-63 characters.
6. Click **Save Settings** to save your settings. If you are configuring the router with a wireless adapter, you will lose connectivity until you enable WPA-PSK on your adapter and enter the same passphrase as you did on the router.

DIR-655	SETUP	ADVANCED	TOOLS	STATUS	HELP
INTERNET	WIRELESS :				Helpful Hints... Changing your Wireless Network Name is the first step in securing your wireless network. Change it to a familiar name that does not contain any personal information. Enable Auto Channel Scan so that the router can select the best possible channel for your wireless network to operate on. Enabling Hidden Mode is another way to secure your network. With this option enabled, no wireless clients will be able to see your wireless network when they scan to see what's available. For your wireless devices to connect to your router, you will need to manually enter the Wireless Network Name on each device. If you have enabled Wireless Security, make sure you write down the Key or Passphrase that you have configured. You will need to enter this information on any wireless device that you connect to your wireless network. More...
WIRELESS SETTINGS	Use this section to configure the wireless settings for your D-Link Router. Please note that changes made on this section may also need to be duplicated on your Wireless Client. <input type="button" value="Save Settings"/> <input type="button" value="Don't Save Settings"/>				
NETWORK SETTINGS	WIRELESS NETWORK SETTINGS Enable Wireless : <input checked="" type="checkbox"/> Always <input type="checkbox"/> New Schedule Wireless Network Name : dlink (Also called the SSID) 802.11 Mode : Mixed 802.11n, 802.11g and 802.11b Enable Auto Channel Scan : <input checked="" type="checkbox"/> Wireless Channel : 2.437 GHz - CH 6 Transmission Rate : Best (automatic) Channel Width : 20 MHz Visibility Status : <input checked="" type="radio"/> Visible <input type="radio"/> Invisible				
USB SETTINGS	WIRELESS SECURITY MODE To protect your privacy you can configure wireless security features. This device supports three wireless security modes, including WEP, WPA-Personal, and WPA-Enterprise. WEP is the original wireless encryption standard. WPA provides a higher level of security. WPA-Personal does not require an authentication server. The WPA-Enterprise option requires an external RADIUS server. Security Mode : WPA-Personal				
WPA Use WPA or WPA2 mode to achieve a balance of strong security and best compatibility. This mode uses WPA for legacy clients while maintaining higher security with stations that are WPA2 capable. Also the strongest cipher that the client supports will be used. For best security, use WPA2 Only mode. This mode uses AES(CCMP) cipher and legacy stations are not allowed access with WPA security. For maximum compatibility, use WPA Only . This mode uses TKIP cipher. Some gaming and legacy devices work only in this mode. To achieve better wireless performance use WPA2 Only security mode (or in other words AES cipher). WPA Mode : Auto (WPA or WPA2) Cipher Type : TKIP and AES Group Key Update Interval : 3600 (seconds)					
PRE-SHARED KEY Enter an 8- to 63-character alphanumeric pass-phrase. For good security it should be of ample length and should not be a commonly known phrase. Pre-Shared Key :					

Configure WPA-Enterprise (RADIUS)

It is recommended to enable encryption on your wireless router before your wireless network adapters. Please establish wireless connectivity before enabling encryption. Your wireless signal may degrade when enabling encryption due to the added overhead.

1. Log into the web-based configuration by opening a web browser and entering the IP address of the router (192.168.0.1). Click on **Setup** and then click **Wireless Settings** on the left side.
2. Next to *Security Mode*, select **WPA-Enterprise**.
3. Next to *WPA Mode*, select **Auto**, **WPA2 Only**, or **WPA Only**. Use **Auto** if you have wireless clients using both WPA and WPA2.
4. Next to *Group Key Update Interval*, enter the amount of time before the group key used for broadcast and multicast data is changed (3600 is default).
5. Next to *Authentication Timeout*, enter the amount of time before a client is required to re-authenticate (60 minutes is default).
6. Next to *RADIUS Server IP Address* enter the IP Address of your RADIUS server.
7. Next to *RADIUS Server Port*, enter the port you are using with your RADIUS server. 1812 is the default port.
8. Next to *RADIUS Server Shared Secret*, enter the security key.

The screenshot shows the 'Wireless Settings' page on a D-Link router. The 'Security Mode' is set to 'WPA-Enterprise'. Below this, the 'WPA' section is expanded, showing 'WPA Mode' set to 'Auto (WPA or WPA2)', 'Cipher Type' set to 'TKIP and AES', and 'Group Key Update Interval' set to '3600 (seconds)'. The 'EAP (802.1X)' section is also expanded, showing 'Authentication Timeout' set to '60 (minutes)', 'RADIUS server IP Address' set to '0.0.0.0', 'RADIUS server Port' set to '1812', 'RADIUS server Shared Secret' (empty), and 'MAC Address Authentication' checked. An 'Advanced >>' button is visible at the bottom of the EAP section. On the right side of the page, there is a note about writing down the Key or Passphrase and a 'More...' link.

Wireless Security Mode: **WPA-Enterprise**

WPA

Use **WPA** or **WPA2** mode to achieve a balance of strong security and best compatibility. This mode uses WPA for legacy clients while maintaining higher security with stations that are WPA2 capable. Also the strongest cipher that the client supports will be used. For best security, use **WPA2 Only** mode. This mode uses AES(CCMP) cipher and legacy stations are not allowed access with WPA security. For maximum compatibility, use **WPA Only**. This mode uses TKIP cipher. Some gaming and legacy devices work only in this mode.

To achieve better wireless performance use **WPA2 Only** security mode (or in other words AES cipher).

WPA Mode : Auto (WPA or WPA2) ▼

Cipher Type : TKIP and AES ▼

Group Key Update Interval : 3600 (seconds)

EAP (802.1X)

When WPA enterprise is enabled, the router uses EAP (802.1x) to authenticate clients via a remote RADIUS server.

Authentication Timeout : 60 (minutes)

RADIUS server IP Address : 0.0.0.0

RADIUS server Port : 1812

RADIUS server Shared Secret :

MAC Address Authentication : ☒

Advanced >>

Wireless Security Mode: ensure you write down the Key or Passphrase that you have configured. You will need to enter this information on any wireless device that you connect to your wireless network. [More...](#)

9. If the *MAC Address Authentication* box is selected then the user will need to connect from the same computer whenever logging into the wireless network.
10. Click **Advanced** to enter settings for a secondary RADIUS Server.
11. Click **Apply Settings** to save your settings.

EAP (802.1X)

When WPA enterprise is enabled, the router uses EAP (802.1x) to authenticate clients via a remote RADIUS server.

Authentication Timeout : (minutes)

RADIUS server IP Address :

RADIUS server Port :

RADIUS server Shared Secret :

MAC Address Authentication : ☒

[Advanced >>](#)

Connect to a Wireless Network Using Windows® 7

It is recommended to enable wireless security (WPA/WPA2) on your wireless router or access point before configuring your wireless adapter. If you are joining an existing network, you will need to know the security key or passphrase being used.

1. Click on the wireless icon in your system tray (lower-right corner).



2. The utility will display any available wireless networks in your area.

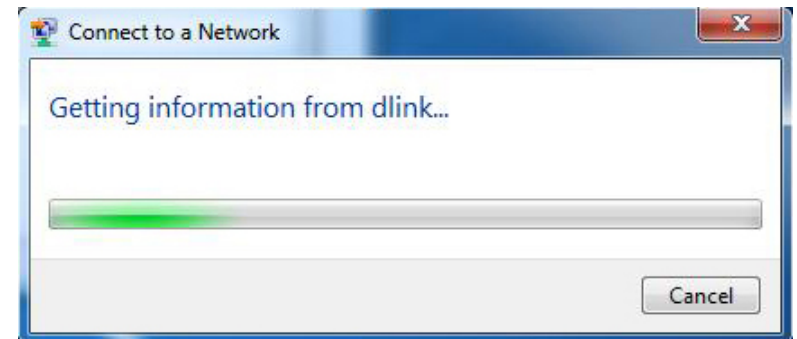


3. Highlight the wireless network (SSID) you would like to connect to and click the Connect button.

If you get a good signal but cannot access the Internet, check your TCP/IP settings for your wireless adapter. Refer to the Networking Basics section in this manual for more information.

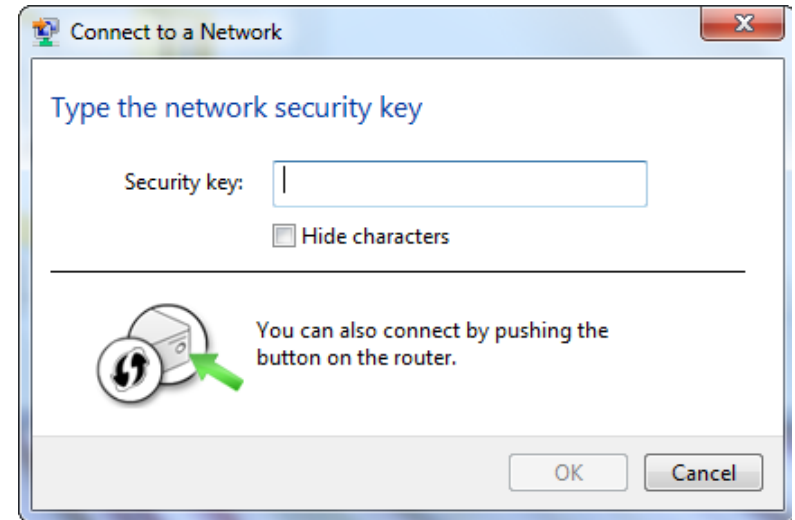


4. The following window appears while your computer tries to connect to the router.



5. Enter the same security key or passphrase that is on your router and click **Ok**.

It may take 20-30 seconds to connect to the wireless network. If the connection fails, please verify that the security settings are correct. The key or passphrase must be exactly the same as on the wireless router.



Connect to a Wireless Network Using Windows Vista®

Windows Vista users may use the built-in wireless utility. If you are using another company's utility or Windows® 2000, please refer to the user manual of your wireless adapter for help with connecting to a wireless network. Most utilities will have a "site survey" option similar to the Windows Vista utility as seen below.

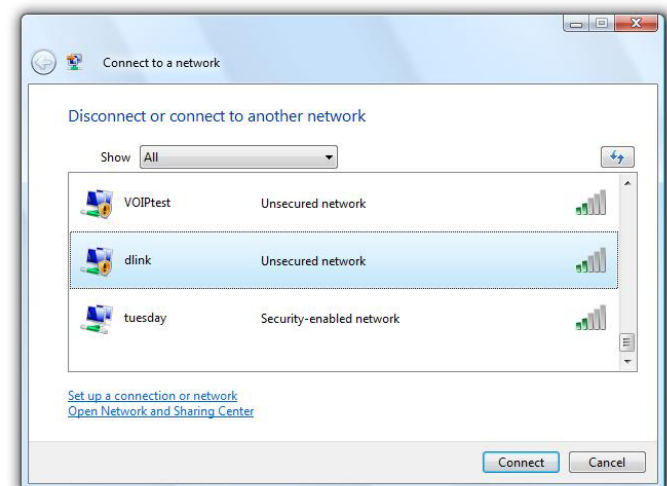
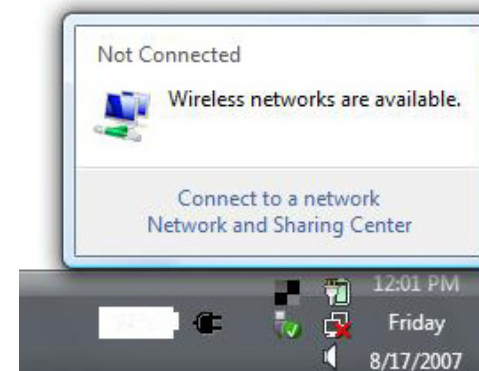
If you receive the **Wireless Networks Detected** bubble, click on the center of the bubble to access the utility.

or

Right-click on the wireless computer icon in your system tray (lower-right corner next to the time). Select **Connect to a network**.

The utility will display any available wireless networks in your area. Click on a network (displayed using the SSID) and click the **Connect** button.

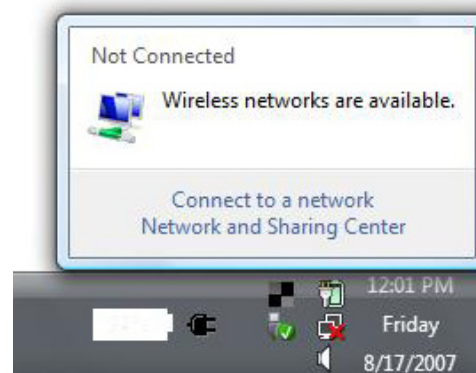
If you get a good signal but cannot access the Internet, check you TCP/IP settings for your wireless adapter. Refer to the **Networking Basics** section in this manual for more information.



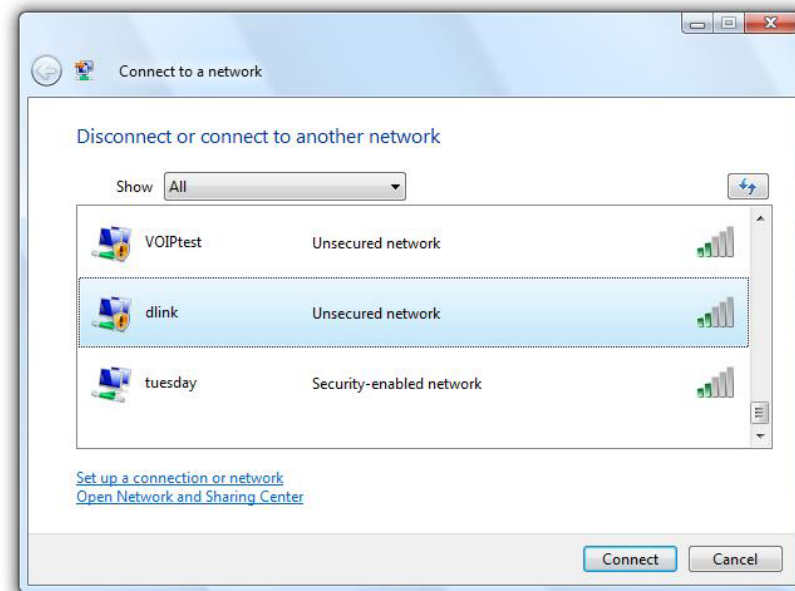
Configure Wireless Security

It is recommended to enable wireless security (WPA/WPA2) on your wireless router or access point before configuring your wireless adapter. If you are joining an existing network, you will need to know the security key or passphrase being used.

1. Open the Windows Vista® Wireless Utility by right-clicking on the wireless computer icon in your system tray (lower right corner of screen). Select **Connect to a network**.

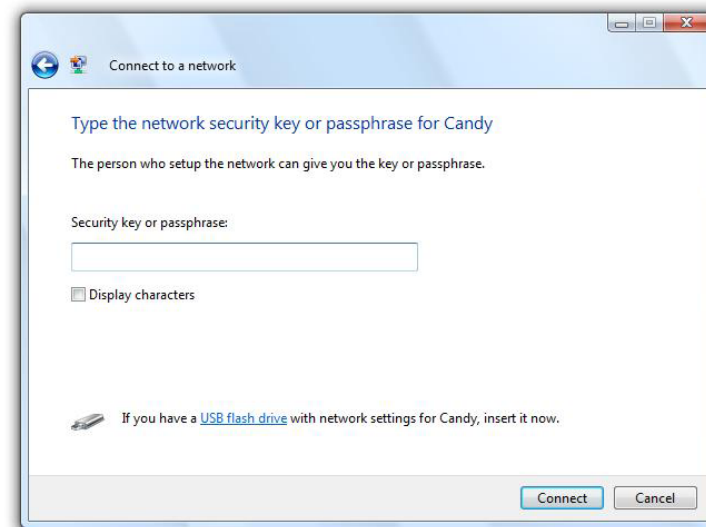


2. Highlight the wireless network (SSID) you would like to connect to and click **Connect**.



3. Enter the same security key or passphrase that is on your router and click **Connect**.

It may take 20-30 seconds to connect to the wireless network. If the connection fails, please verify that the security settings are correct. The key or passphrase must be exactly the same as on the wireless router.



Connect to a Wireless Network

Using Windows® XP

Windows XP users may use the built-in wireless utility (Zero Configuration Utility). The following instructions are for Service Pack 2 users. If you are using another company's utility or Windows 2000, please refer to the user manual of your wireless adapter for help with connecting to a wireless network. Most utilities will have a "site survey" option similar to the Windows XP utility as seen below.

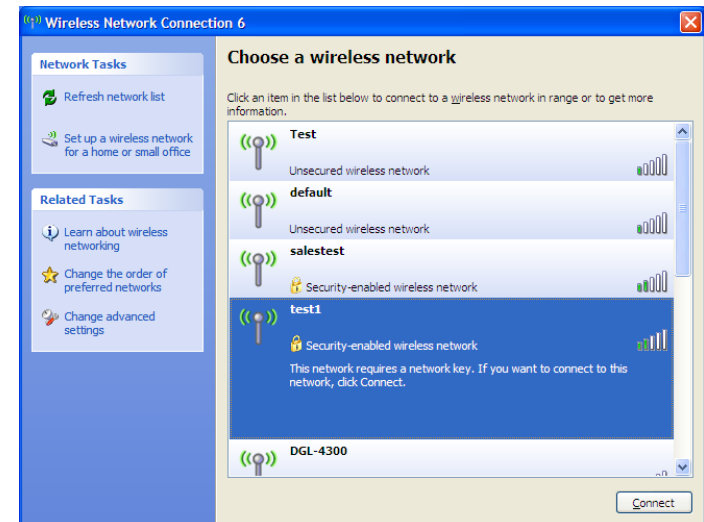
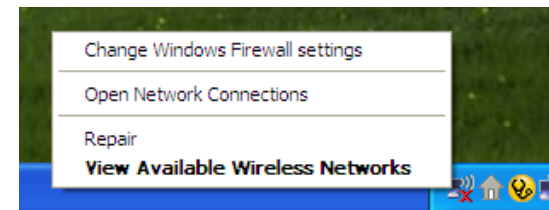
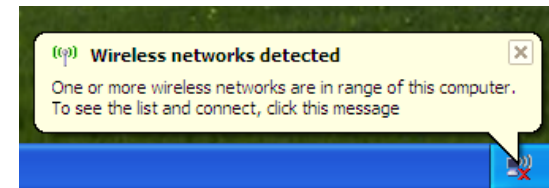
If you receive the **Wireless Networks Detected** bubble, click on the center of the bubble to access the utility.

or

Right-click on the wireless computer icon in your system tray (lower right corner next to the time). Select **View Available Wireless Networks**.

The utility will display any available wireless networks in your area. Click on a network (displayed using the SSID) and click the **Connect** button.

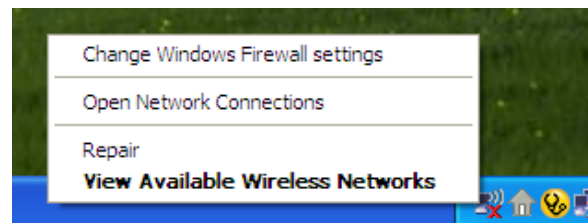
If you get a good signal but cannot access the Internet, check you TCP/IP settings for your wireless adapter. Refer to the **Networking Basics** section in this manual for more information.



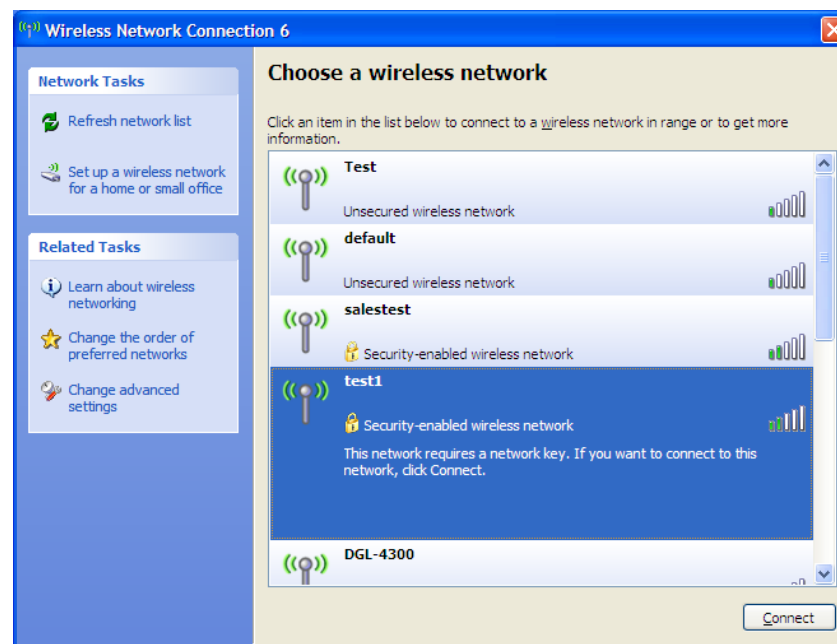
Configure WPA-PSK

It is recommended to enable encryption on your wireless router or access point before configuring your wireless adapter. If you are joining an existing network, you will need to know the passphrase being used.

1. Open the Windows® XP Wireless Utility by right-clicking on the wireless computer icon in your system tray (lower-right corner of screen). Select **View Available Wireless Networks**.

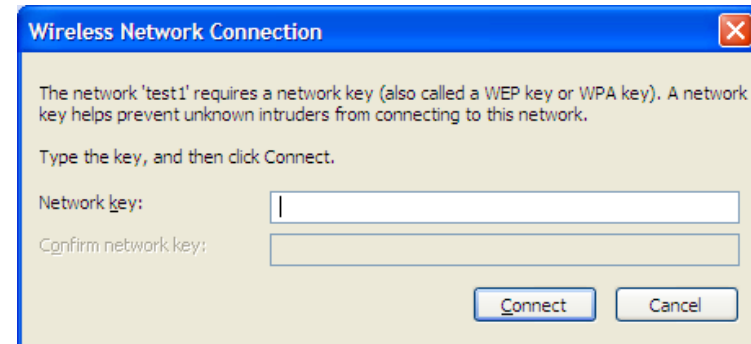


2. Highlight the wireless network (SSID) you would like to connect to and click **Connect**.



3. The **Wireless Network Connection** box will appear. Enter the WPA-PSK passphrase and click **Connect**.

It may take 20-30 seconds to connect to the wireless network. If the connection fails, please verify that the WPA-PSK settings are correct. The WPA-PSK passphrase must be exactly the same as on the wireless router.



Troubleshooting

This chapter provides solutions to problems that can occur during the installation and operation of the DIR-655. Read the following descriptions if you are having problems. (The examples below are illustrated in Windows® XP. If you have a different operating system, the screenshots on your computer will look similar to the following examples.)

1. Why can't I access the web-based configuration utility?

When entering the IP address of the D-Link router (192.168.0.1 for example), you are not connecting to a website on the Internet or have to be connected to the Internet. The device has the utility built-in to a ROM chip in the device itself. Your computer must be on the same IP subnet to connect to the web-based utility.

- Make sure you have an updated Java-enabled web browser. We recommend the following:
 - Internet Explorer 6.0 or higher
 - Netscape 8 or higher
 - Mozilla 1.7.12 (5.0) or higher
 - Opera 8.5 or higher
 - Safari 1.2 or higher (with Java 1.3.1 or higher)
 - Camino 0.8.4 or higher
 - Firefox 1.5 or higher
- Verify physical connectivity by checking for solid link lights on the device. If you do not get a solid link light, try using a different cable or connect to a different port on the device if possible. If the computer is turned off, the link light may not be on.
- Disable any internet security software running on the computer. Software firewalls such as Zone Alarm, Black Ice, Sygate, Norton Personal Firewall, and Windows XP firewall may block access to the configuration pages. Check the help files included with your firewall software for more information on disabling or configuring it.

- Configure your Internet settings:

- Go to **Start > Settings > Control Panel**. Double-click the **Internet Options** icon. From the **Security** tab, click the button to restore the settings to their defaults.
 - Click the **Connection** tab and set the dial-up option to Never Dial a Connection. Click the LAN Settings button. Make sure nothing is checked. Click **OK**.
 - Go to the **Advanced** tab and click the button to restore these settings to their defaults. Click **OK** three times.
 - Close your web browser (if open) and open it.
- Access the web management. Open your web browser and enter the IP address of your D-Link router in the address bar. This should open the login page for your the web management.
 - If you still cannot access the configuration, unplug the power to the router for 10 seconds and plug back in. Wait about 30 seconds and try accessing the configuration. If you have multiple computers, try connecting using a different computer.

2. What can I do if I forgot my password?

If you forgot your password, you must reset your router. Unfortunately this process will change all your settings back to the factory defaults.

To reset the router, locate the reset button (hole) on the rear panel of the unit. With the router powered on, use a paperclip to hold the button down for 10 seconds. Release the button and the router will go through its reboot process. Wait about 30 seconds to access the router. The default IP address is 192.168.0.1. When logging in, the username is **admin** and leave the password box empty.

3. Why can't I connect to certain sites or send and receive emails when connecting through my router?

If you are having a problem sending or receiving email, or connecting to secure sites such as eBay, banking sites, and Hotmail, we suggest lowering the MTU in increments of ten (Ex. 1492, 1482, 1472, etc).

Note: AOL DSL+ users must use MTU of 1400.

To find the proper MTU Size, you'll have to do a special ping of the destination you're trying to go to. A destination could be another computer, or a URL.

- Click on **Start** and then click **Run**.
- Windows® 95, 98, and Me users type in **command** (Windows NT, 2000, XP, Vista® and 7 users type in **cmd**) and press **Enter** (or click **OK**).
- Once the window opens, you'll need to do a special ping. Use the following syntax:

ping [url] [-f] [-l] [MTU value]

Example: **ping yahoo.com -f -l 1472**

```
C:\>ping yahoo.com -f -l 1482
Pinging yahoo.com [66.94.234.13] with 1482 bytes of data:
Packet needs to be fragmented but DF set.
Packet needs to be fragmented but DF set.
Packet needs to be fragmented but DF set.
Packet needs to be fragmented but DF set.

Ping statistics for 66.94.234.13:
    Packets: Sent = 4, Received = 0, Lost = 4 (100% loss),
    Approximate round trip times in milli-seconds:
        Minimum = 0ms, Maximum = 0ms, Average = 0ms

C:\>ping yahoo.com -f -l 1472
Pinging yahoo.com [66.94.234.13] with 1472 bytes of data:
Reply from 66.94.234.13: bytes=1472 time=93ms TTL=52
Reply from 66.94.234.13: bytes=1472 time=109ms TTL=52
Reply from 66.94.234.13: bytes=1472 time=125ms TTL=52
Reply from 66.94.234.13: bytes=1472 time=203ms TTL=52

Ping statistics for 66.94.234.13:
    Packets: Sent = 4, Received = 4, Lost = 0 (0% loss),
    Approximate round trip times in milli-seconds:
        Minimum = 93ms, Maximum = 203ms, Average = 132ms

C:\>
```

You should start at 1472 and work your way down by 10 each time. Once you get a reply, go up by 2 until you get a fragmented packet. Take that value and add 28 to the value to account for the various TCP/IP headers. For example, let's say that 1452 was the proper value, the actual MTU size would be 1480, which is the optimum for the network we're working with ($1452+28=1480$).

Once you find your MTU, you can now configure your router with the proper MTU size.

To change the MTU rate on your router follow the steps below:

- Open your browser, enter the IP address of your router (192.168.0.1) and click **OK**.
- Enter your username (admin) and password (blank by default). Click **OK** to enter the web configuration page for the device.
- Click on **Setup** and then click **Manual Configure**.
- To change the MTU enter the number in the MTU field and click **Save Settings** to save your settings.
- Test your email. If changing the MTU does not resolve the problem, continue changing the MTU in increments of ten.

Wireless Basics

D-Link wireless products are based on industry standards to provide easy-to-use and compatible high-speed wireless connectivity within your home, business or public access wireless networks. Strictly adhering to the IEEE standard, the D-Link wireless family of products will allow you to securely access the data you want, when and where you want it. You will be able to enjoy the freedom that wireless networking delivers.

A wireless local area network (WLAN) is a cellular computer network that transmits and receives data with radio signals instead of wires. Wireless LANs are used increasingly in both home and office environments, and public areas such as airports, coffee shops and universities. Innovative ways to utilize WLAN technology are helping people to work and communicate more efficiently. Increased mobility and the absence of cabling and other fixed infrastructure have proven to be beneficial for many users.

Wireless users can use the same applications they use on a wired network. Wireless adapter cards used on laptop and desktop systems support the same protocols as Ethernet adapter cards.

Under many circumstances, it may be desirable for mobile network devices to link to a conventional Ethernet LAN in order to use servers, printers or an Internet connection supplied through the wired LAN. A Wireless Router is a device used to provide this link.

What is Wireless?

Wireless or Wi-Fi technology is another way of connecting your computer to the network without using wires. Wi-Fi uses radio frequency to connect wirelessly, so you have the freedom to connect computers anywhere in your home or office network.

Why D-Link Wireless?

D-Link is the worldwide leader and award winning designer, developer, and manufacturer of networking products. D-Link delivers the performance you need at a price you can afford. D-Link has all the products you need to build your network.

How does wireless work?

Wireless works similar to how cordless phone work, through radio signals to transmit data from one point A to point B. But wireless technology has restrictions as to how you can access the network. You must be within the wireless network range area to be able to connect your computer. There are two different types of wireless networks Wireless Local Area Network (WLAN), and Wireless Personal Area Network (WPAN).

Wireless Local Area Network (WLAN)

In a wireless local area network, a device called an Access Point (AP) connects computers to the network. The access point has a small antenna attached to it, which allows it to transmit data back and forth over radio signals. With an indoor access point as seen in the picture, the signal can travel up to 300 feet. With an outdoor access point the signal can reach out up to 30 miles to serve places like manufacturing plants, industrial locations, college and high school campuses, airports, golf courses, and many other outdoor venues.

Wireless Personal Area Network (WPAN)

Bluetooth is the industry standard wireless technology used for WPAN. Bluetooth devices in WPAN operate in a range up to 30 feet away. Compared to WLAN the speed and wireless operation range are both less than WLAN, but in return it doesn't use nearly as much power which makes it ideal for personal devices, such as mobile phones, PDAs, headphones, laptops, speakers, and other devices that operate on batteries.

Who uses wireless?

Wireless technology has become so popular in recent years that almost everyone is using it, whether it's for home, office, business, D-Link has a wireless solution for it.

Home

- Gives everyone at home broadband access
- Surf the web, check email, instant message, and etc
- Gets rid of the cables around the house
- Simple and easy to use

Small Office and Home Office

- Stay on top of everything at home as you would at office
- Remotely access your office network from home
- Share Internet connection and printer with multiple computers
- No need to dedicate office space

Where is wireless used?

Wireless technology is expanding everywhere not just at home or office. People like the freedom of mobility and it's becoming so popular that more and more public facilities now provide wireless access to attract people. The wireless connection in public places is usually called "hotspots".

Using a D-Link Cardbus Adapter with your laptop, you can access the hotspot to connect to Internet from remote locations like: Airports, Hotels, Coffee Shops, Libraries, Restaurants, and Convention Centers.

Wireless network is easy to setup, but if you're installing it for the first time it could be quite a task not knowing where to start. That's why we've put together a few setup steps and tips to help you through the process of setting up a wireless network.

Tips

Here are a few things to keep in mind, when you install a wireless network.

Centralize your router or Access Point

Make sure you place the router/access point in a centralized location within your network for the best performance. Try to place the router/access point as high as possible in the room, so the signal gets dispersed throughout your home. If you have a two-story home, you may need a repeater to boost the signal to extend the range.

Eliminate Interference

Place home appliances such as cordless telephones, microwaves, and televisions as far away as possible from the router/access point. This would significantly reduce any interference that the appliances might cause since they operate on same frequency.

Security

Don't let your next-door neighbors or intruders connect to your wireless network. Secure your wireless network by turning on the WPA security feature on the router. Refer to product manual for detail information on how to set it up.

Wireless Modes

There are basically two modes of networking:

- **Infrastructure** – All wireless clients will connect to an access point or wireless router.
- **Ad-Hoc** – Directly connecting to another computer, for peer-to-peer communication, using wireless network adapters on each computer, such as two or more DIR-655 wireless network Cardbus adapters.

An Infrastructure network contains an Access Point or wireless router. All the wireless devices, or clients, will connect to the wireless router or access point.

An Ad-Hoc network contains only clients, such as laptops with wireless cardbus adapters. All the adapters must be in Ad-Hoc mode to communicate.

Networking Basics

Check your IP address

After you install your new D-Link adapter, by default, the TCP/IP settings should be set to obtain an IP address from a DHCP server (i.e. wireless router) automatically. To verify your IP address, please follow the steps below.

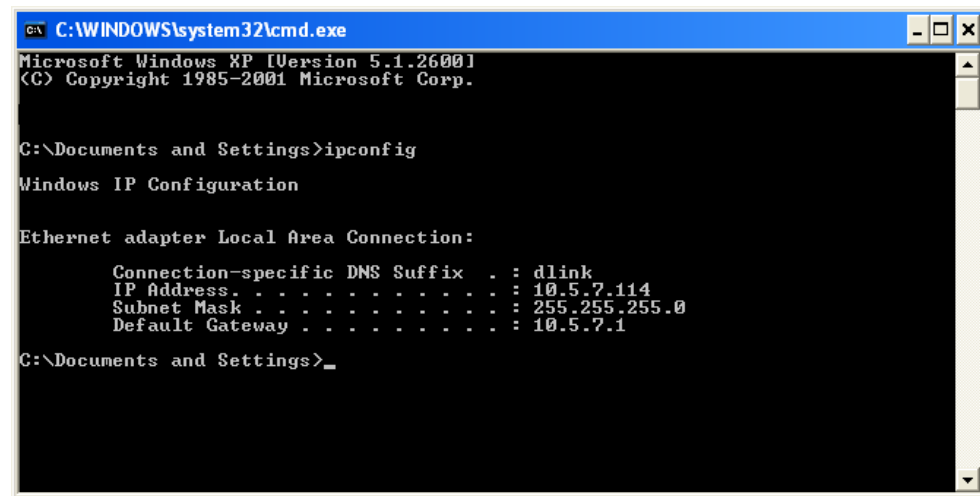
Click on **Start** > **Run**. In the run box type **cmd** and click **OK**. (Windows Vista® users type *cmd* in the **Start Search** box.)

At the prompt, type **ipconfig** and press **Enter**.

This will display the IP address, subnet mask, and the default gateway of your adapter.

If the address is 0.0.0.0, check your adapter installation, security settings, and the settings on your router. Some firewall software programs may block a DHCP request on newly installed adapters.

If you are connecting to a wireless network at a hotspot (e.g. hotel, coffee shop, airport), please contact an employee or administrator to verify their wireless network settings.



```
C:\WINDOWS\system32\cmd.exe
Microsoft Windows XP [Version 5.1.2600]
(C) Copyright 1985-2001 Microsoft Corp.

C:\Documents and Settings>ipconfig

Windows IP Configuration

Ethernet adapter Local Area Connection:

    Connection-specific DNS Suffix  . : dlink
    IP Address. . . . . : 10.5.7.114
    Subnet Mask . . . . . : 255.255.255.0
    Default Gateway . . . . . : 10.5.7.1

C:\Documents and Settings>
```


Statically Assign an IP address

If you are not using a DHCP capable gateway/router, or you need to assign a static IP address, please follow the steps below:

Step 1

Windows® 7 - Click on **Start > Control Panel > Network and Internet > Network and Sharing Center**.

Windows Vista® - Click on **Start > Control Panel > Network and Internet > Network and Sharing Center > Manage Network Connections**.

Windows XP - Click on **Start > Control Panel > Network Connections**.

Windows 2000 - From the desktop, right-click **My Network Places > Properties**.

Step 2

Right-click on the **Local Area Connection** which represents your D-Link network adapter and select **Properties**.

Step 3

Highlight **Internet Protocol (TCP/IP)** and click **Properties**.

Step 4

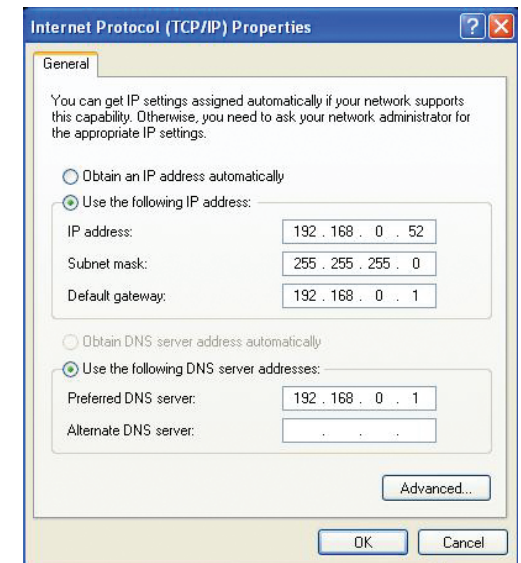
Click **Use the following IP address** and enter an IP address that is on the same subnet as your network or the LAN IP address on your router.

Example: If the router's LAN IP address is 192.168.0.1, make your IP address 192.168.0.X where X is a number between 2 and 99. Make sure that the number you choose is not in use on the network. Set Default Gateway the same as the LAN IP address of your router (192.168.0.1).

Set Primary DNS the same as the LAN IP address of your router (192.168.0.1). The Secondary DNS is not needed or you may enter a DNS server from your ISP.

Step 5

Click **OK** twice to save your settings.



Technical Specifications

Standards

- IEEE 802.11n
- IEEE 802.11g
- IEEE 802.3
- IEEE 802.3u

Security

- WPA-Personal
- WPA2-Personal
- WPA-Enterprise
- WPA2-Enterprise

Wireless Signal Rates*

- | | |
|-----------|-----------|
| • 300Mbps | • 12Mbps |
| • 108Mbps | • 11Mbps |
| • 54Mbps | • 9Mbps |
| • 48Mbps | • 6Mbps |
| • 36Mbps | • 5.5Mbps |
| • 24Mbps | • 2Mbps |
| • 18Mbps | • 1Mbps |

MSC (0-15)

- | | |
|-----------------|--------------------|
| • 130Mbps (270) | • 117Mbps (243) |
| • 104Mbps (216) | • 78Mbps (162) |
| • 66Mbps (135) | • 58.5Mbps (121.5) |
| • 52Mbps (108) | • 39Mbps (81) |
| • 26Mbps (54) | • 19.5Mbps (40.5) |
| • 12Mbps (27) | • 6.5Mbps (13.5) |

Frequency Range

- 2.4GHz to 2.483GHz

Transmitter Output Power

- 15dBm \pm 2dB

External Antenna Type

- Three (3) detachable reverse SMA Antennas

LEDs

- | | | |
|---------|---------------------|----------|
| • Power | • Internet | • Status |
| • WLAN | • LAN (10/100/1000) | • USB |

Operating Temperature

- 32°F to 131°F (0°C to 55°C)

Humidity

- 95% maximum (non-condensing)

Safety & Emissions

- FCC
- CE

Dimensions

- L = 7.6 inches
- W = 4.6 inches
- H = 1.2inches

Warranty

- 1 Year

* Maximum wireless signal rate derived from IEEE Standard 802.11g and 802.11n specifications. Actual data throughput will vary. Network conditions and environmental factors, including volume of network traffic, building materials and construction, and network overhead, lower actual data throughput rate. Environmental factors will adversely affect wireless signal range.

Contacting Technical Support

U.S. and Canadian customers can contact D-Link technical support through our web site or by phone.

Before you contact technical support, please have the following ready:

- Model number of the product (e.g. DIR-655)
- Hardware Revision (located on the label on the bottom of the router (e.g. rev B1))
- Serial Number (s/n number located on the label on the bottom of the router).

You can find software updates and user documentation on the D-Link website as well as frequently asked questions and answers to technical issues.

For customers within Canada:

Phone Support:

(800) 361-5265

Internet Support:

<http://support.dlink.ca>

Warranty

Subject to the terms and conditions set forth herein, D-Link Systems, Inc. ("D-Link") provides this Limited Warranty:

- Only to the person or entity that originally purchased the product from D-Link or its authorized reseller or distributor, and
- Only for products purchased and delivered within the fifty states of the United States, the District of Columbia, U.S. Possessions or Protectorates, U.S. Military Installations, or addresses with an APO or FPO.

Limited Warranty:

D-Link warrants that the hardware portion of the D-Link product described below ("Hardware") will be free from material defects in workmanship and materials under normal use from the date of original retail purchase of the product, for the period set forth below ("Warranty Period"), except as otherwise stated herein.

- Hardware (excluding power supplies and fans): One (1) year
- Power supplies and fans: One (1) year
- Spare parts and spare kits: Ninety (90) days

The customer's sole and exclusive remedy and the entire liability of D-Link and its suppliers under this Limited Warranty will be, at D-Link's option, to repair or replace the defective Hardware during the Warranty Period at no charge to the original owner or to refund the actual purchase price paid. Any repair or replacement will be rendered by D-Link at an Authorized D-Link Service Office. The replacement hardware need not be new or have an identical make, model or part. D-Link may, at its option, replace the defective Hardware or any part thereof with any reconditioned product that D-Link reasonably determines is substantially equivalent (or superior) in all material respects to the defective Hardware. Repaired or replacement hardware will be warranted for the remainder of the original Warranty Period or ninety (90) days, whichever is longer, and is subject to the same limitations and exclusions. If a material defect is incapable of correction, or if D-Link determines that it is not practical to repair or replace the defective Hardware, the actual price paid by the original purchaser for the defective Hardware will be refunded by D-Link upon return to D-Link of the defective Hardware. All Hardware or part thereof that is replaced by D-Link, or for which the purchase price is refunded, shall become the property of D-Link upon replacement or refund.

Limited Software Warranty:

D-Link warrants that the software portion of the product ("Software") will substantially conform to D-Link's then current functional specifications for the Software, as set forth in the applicable documentation, from the date of original retail purchase of the Software for a period of ninety (90) days ("Software Warranty Period"), provided that the Software is properly installed on approved hardware and operated as contemplated in its documentation. D-Link further warrants that, during the Software Warranty Period, the magnetic media on which D-Link delivers the Software will be free of physical defects. The customer's sole and exclusive remedy and the entire liability of D-Link and its suppliers under this Limited Warranty will be, at D-Link's option, to replace the non-conforming Software (or defective media) with software that substantially conforms to D-Link's functional specifications for the Software or to refund the portion of the actual purchase price paid that is attributable to the Software. Except as otherwise agreed by DLink in writing, the replacement Software is provided only to the original licensee, and is subject to the terms and conditions of the license granted by D-Link for the Software. Replacement Software will be warranted for the remainder of the original Warranty Period and is subject to the same limitations and exclusions. If a material non-conformance is incapable of correction, or if D-Link determines in its sole discretion that it is not practical to replace the non-conforming Software, the price paid by the original licensee for the non-conforming Software will be refunded by D-Link; provided that the non-conforming Software (and all copies thereof) is first returned to D-Link. The license granted respecting any Software for which a refund is given automatically terminates.

Non-Applicability of Warranty:

The Limited Warranty provided hereunder for Hardware and Software portions of D-Link's products will not be applied to and does not cover any refurbished product and any product purchased through the inventory clearance or liquidation sale or other sales in which D-Link, the sellers, or the liquidators expressly disclaim their warranty obligation pertaining to the product and in that case, the product is being sold "As-Is" without any warranty whatsoever including, without limitation, the Limited Warranty as described herein, notwithstanding anything stated herein to the contrary.

Submitting A Claim:

The customer shall return the product to the original purchase point based on its return policy. In case the return policy period has expired and the product is within warranty, the customer shall submit a claim to D-Link as outlined below:

- Customers need to provide their receipt (proof of purchase) even if the product is registered. Without a receipt, no warranty service will be done. The registration is not considered a proof of purchase.
- The customer must submit with the product as part of the claim a written description of the Hardware defect or Software nonconformance in sufficient detail to allow D-Link to confirm the same, along with proof of purchase of the product (such as a copy of the dated purchase invoice for the product) if the product is not registered.
- The customer must obtain a Case ID Number from D-Link Technical Support at 1-800-361-5265, who will attempt to assist the customer in resolving any suspected defects with the product. If the product is considered defective, the customer must obtain a Return Material Authorization ("RMA") number by completing the RMA form and entering the assigned Case ID Number at <https://rma.dlink.ca/>.

- After an RMA number is issued, the defective product must be packaged securely in the original or other suitable shipping package to ensure that it will not be damaged in transit, and the RMA number must be prominently marked on the outside of the package. Do not include any manuals or accessories in the shipping package. D-Link will only replace the defective portion of the product and will not ship back any accessories.
- The customer is responsible for all in-bound shipping charges to D-Link. No Cash on Delivery (“COD”) is allowed. Products sent COD will be rejected by D-Link. Products shall be fully insured by the customer and shipped to D-Link Networks, Inc., 2525 Meadowvale Boulevard Mississauga, Ontario, L5N 5S2 Canada. D-Link will not be held responsible for any packages that are lost in transit to D-Link. The repaired or replaced packages will be shipped to the customer via Purolator Canada or any common carrier selected by D-Link. Return shipping charges shall be prepaid by D-Link if you use an address in Canada, otherwise we will ship the product to you freight collect. Expedited shipping is available upon request and provided shipping charges are prepaid by the customer. D-Link may reject or return any product that is not packaged and shipped in strict compliance with the foregoing requirements, or for which an RMA number is not visible from the outside of the package. The product owner agrees to pay D-Link’s reasonable handling and return shipping charges for any product that is not packaged and shipped in accordance with the foregoing requirements, or that is determined by D-Link not to be defective or non-conforming.
- RMA phone number: 1-800-361-5265 Hours of Operation: Monday-Friday, 9:00AM – 9:00PM EST

What Is Not Covered:

The Limited Warranty provided herein by D-Link does not cover:

Products that, in D-Link’s judgment, have been subjected to abuse, accident, alteration, modification, tampering, negligence, misuse, faulty installation, lack of reasonable care, repair or service in any way that is not contemplated in the documentation for the product, or if the model or serial number has been altered, tampered with, defaced or removed; Initial installation, installation and removal of the product for repair, and shipping costs; Operational adjustments covered in the operating manual for the product, and normal maintenance; Damage that occurs in shipment, due to act of God, failures due to power surge, and cosmetic damage; Any hardware, software, firmware or other products or services provided by anyone other than D-Link; and Products that have been purchased from inventory clearance or liquidation sales or other sales in which D-Link, the sellers, or the liquidators expressly disclaim their warranty obligation pertaining to the product.

While necessary maintenance or repairs on your Product can be performed by any company, we recommend that you use only an Authorized D-Link Service Office. Improper or incorrectly performed maintenance or repair voids this Limited Warranty.

Disclaimer of Other Warranties:

EXCEPT FOR THE LIMITED WARRANTY SPECIFIED HEREIN, THE PRODUCT IS PROVIDED “AS-IS” WITHOUT ANY WARRANTY OF ANY KIND WHATSOEVER

INCLUDING, WITHOUT LIMITATION, ANY WARRANTY OF MERCHANTABILITY, FITNESS FOR A PARTICULAR PURPOSE AND NONINFRINGEMENT.

IF ANY IMPLIED WARRANTY CANNOT BE DISCLAIMED IN ANY TERRITORY WHERE A PRODUCT IS SOLD, THE DURATION OF SUCH IMPLIED WARRANTY SHALL BE LIMITED TO THE DURATION OF THE APPLICABLE WARRANTY PERIOD SET FORTH ABOVE. EXCEPT AS EXPRESSLY COVERED UNDER THE LIMITED WARRANTY PROVIDED HEREIN, THE ENTIRE RISK AS TO THE QUALITY, SELECTION AND PERFORMANCE OF THE PRODUCT IS WITH THE PURCHASER OF THE PRODUCT.

Limitation of Liability:

TO THE MAXIMUM EXTENT PERMITTED BY LAW, D-LINK IS NOT LIABLE UNDER ANY CONTRACT, NEGLIGENCE, STRICT LIABILITY OR OTHER LEGAL OR EQUITABLE THEORY FOR ANY LOSS OF USE OF THE PRODUCT, INCONVENIENCE OR DAMAGES OF ANY CHARACTER, WHETHER DIRECT, SPECIAL, INCIDENTAL OR CONSEQUENTIAL (INCLUDING, BUT NOT LIMITED TO, DAMAGES FOR LOSS OF GOODWILL, LOSS OF REVENUE OR PROFIT, WORK STOPPAGE, COMPUTER FAILURE OR MALFUNCTION, FAILURE OF OTHER EQUIPMENT OR COMPUTER PROGRAMS TO WHICH D-LINK'S PRODUCT IS CONNECTED WITH, LOSS OF INFORMATION OR DATA CONTAINED IN, STORED ON, OR INTEGRATED WITH ANY PRODUCT RETURNED TO D-LINK FOR WARRANTY SERVICE) RESULTING FROM THE USE OF THE PRODUCT, RELATING TO WARRANTY SERVICE, OR ARISING OUT OF ANY BREACH OF THIS LIMITED WARRANTY, EVEN IF D-LINK HAS BEEN ADVISED OF THE POSSIBILITY OF SUCH DAMAGES. THE SOLE REMEDY FOR A BREACH OF THE FOREGOING LIMITED WARRANTY IS REPAIR, REPLACEMENT OR REFUND OF THE DEFECTIVE OR NONCONFORMING PRODUCT. THE MAXIMUM LIABILITY OF D-LINK UNDER THIS WARRANTY IS LIMITED TO THE PURCHASE PRICE OF THE PRODUCT COVERED BY THE WARRANTY. THE FOREGOING EXPRESS WRITTEN WARRANTIES AND REMEDIES ARE EXCLUSIVE AND ARE IN LIEU OF ANY OTHER WARRANTIES OR REMEDIES, EXPRESS, IMPLIED OR STATUTORY.

Governing Law:

This Limited Warranty shall be governed by the laws of the Province of Ontario. Some provinces do not allow exclusion or limitation of incidental or consequential damages, or limitations on how long an implied warranty lasts, so the foregoing limitations and exclusions may not apply. This Limited Warranty provides specific legal rights and you may also have other rights which vary from province to province.

Trademarks:

D-Link is a registered trademark of D-Link Corporation/D-Link Canada, Inc. Other trademarks or registered trademarks are the property of their respective owners.

Copyright Statement:

No part of this publication or documentation accompanying this product may be reproduced in any form or by any means or used to make any derivative such as translation, transformation, or adaptation without permission from D-Link Corporation/D-Link Canada, Inc., as stipulated by the United States Copyright Act of 1976 and any amendments thereto. Contents are subject to change without prior notice.

Copyright ©2008-2010 by D-Link Corporation/D-Link Canada, Inc. All rights reserved.

CE Mark Warning:

This is a Class B product. In a domestic environment, this product may cause radio interference, in which case the user may be required to take adequate measures.

FCC Statement:

This equipment has been tested and found to comply with the limits for a Class B digital device, pursuant to part 15 of the FCC Rules. These limits are designed to provide reasonable protection against harmful interference in a residential installation. This equipment generates, uses, and can radiate radio frequency energy and, if not installed and used in accordance with the instructions, may cause harmful interference to radio communication. However, there is no guarantee that interference will not occur in a particular installation. If this equipment does cause harmful interference to radio or television reception, which can be determined by turning the equipment off and on, the user is encouraged to try to correct the interference by one or more of the following measures:

- Reorient or relocate the receiving antenna.
- Increase the separation between the equipment and receiver.
- Connect the equipment into an outlet on a circuit different from that to which the receiver is connected.
- Consult the dealer or an experienced radio/TV technician for help.

FCC Caution:

Any changes or modifications not expressly approved by the party responsible for compliance could void the user's authority to operate this equipment.

This device complies with Part 15 of the FCC Rules. Operation is subject to the following two conditions:

(1) This device may not cause harmful interference, and (2) this device must accept any interference received, including interference that may cause undesired operation.

IMPORTANT NOTICE:**FCC Radiation Exposure Statement:**

This equipment complies with FCC radiation exposure limits set forth for an uncontrolled environment. This equipment should be installed and operated with minimum distance 20cm between the radiator & your body. This transmitter must not be co-located or operating in conjunction with any other antenna or transmitter.

The availability of some specific channels and/or operational frequency bands are country dependent and are firmware programmed at the factory to match the intended destination. The firmware setting is not accessible by the end user.

For detailed warranty information applicable to products purchased outside the United States, please contact the corresponding local D-Link office.

Industry Canada Notice:

This device complies with RSS-210 of the Industry Canada Rules. Operation is subject to the following two conditions:

(1) This device may not cause harmful interference, and (2) this device must accept any interference received, including interference that may cause undesired operation.

IMPORTANT NOTE:

Radiation Exposure Statement:

This equipment complies with IC radiation exposure limits set forth for an uncontrolled environment. This equipment should be installed and operated with minimum distance 20cm between the radiator & your body.

This device has been designed to operate with an antenna having a maximum gain of 2dB. Antenna having a higher gain is strictly prohibited per regulations of Industry Canada. The required antenna impedance is 50 ohms.

Registration



Product registration is entirely voluntary and failure to complete or return this form will not diminish your warranty rights.

Version 2.0
May 10, 2010