

D-Link Quick Installation Guide

This product can be set up using any current web browser, i.e., Internet Explorer 6 or Netscape Navigator 6.2.3.



DSA-3100
Hotspot Gateway

Before You Begin

This Quick Installation Guide (QIG) provides basic instructions for installing the DSA-3100 and establishing connectivity to computers on the network. This guide will also show you how to connect the DSA-3100 to other devices on your network.

Check Your Package Contents



DSA-3100 Wireless Service Gateway



CD-ROM (containing Manual and Warranty)



3 Ethernet Cables

2 Cat5 UTP Straight-Through, 1 Cat5 UTP Crossover cable.



RS232 Console Cable



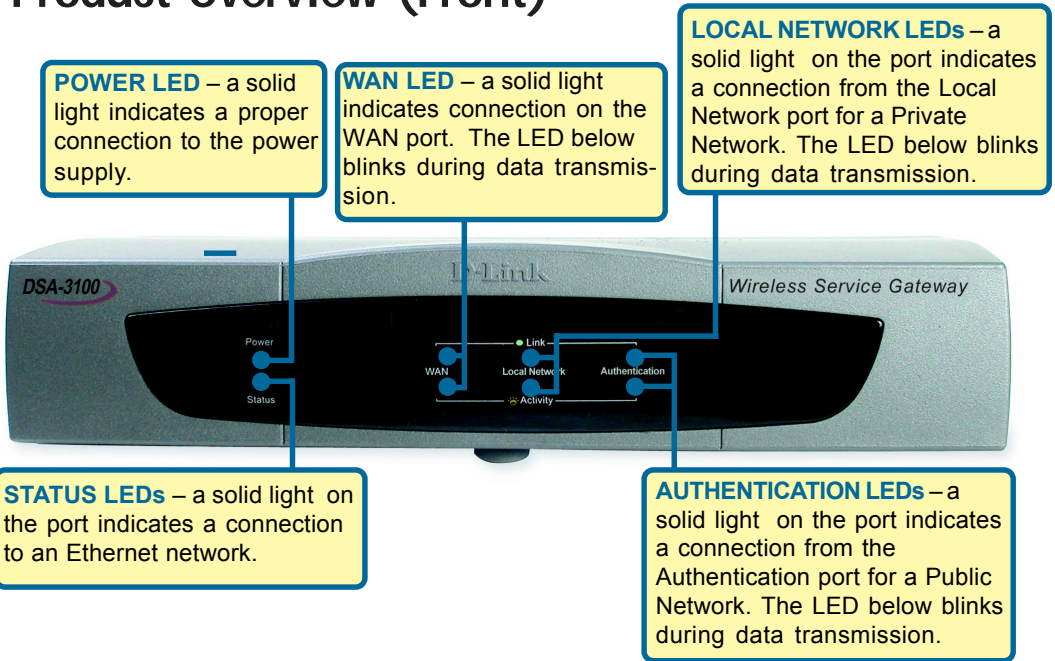
5V DC, 3A Power Adapter



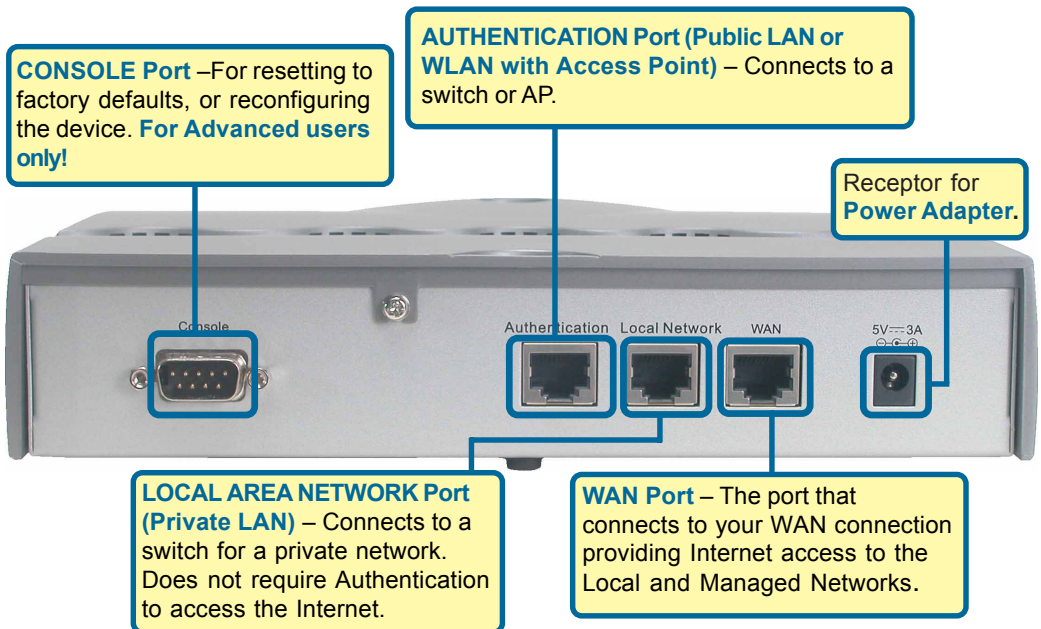
Using a power supply with a different voltage rating will damage and void the warranty of this product.

If any of the above items are missing, please contact your reseller.

Product Overview (Front)



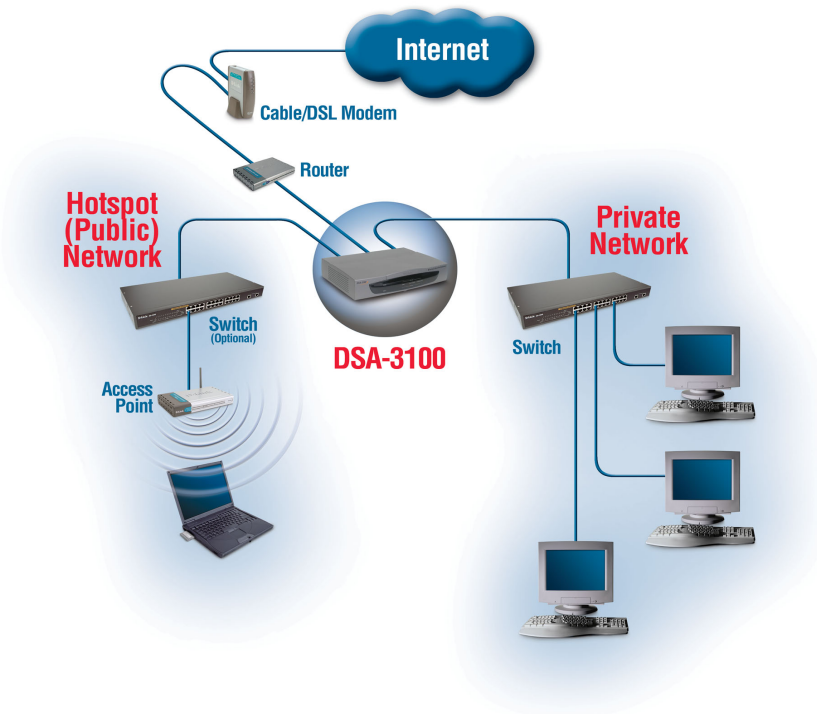
Product Overview (Back)



1

Connecting The DSA-3100 To Your Network

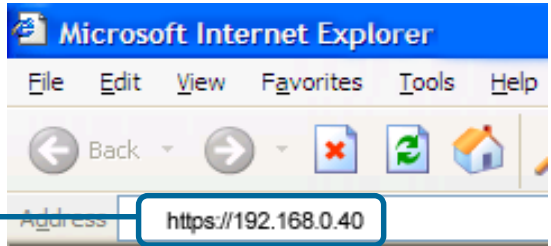
- A.** Ensure that the DSA-3100 is powered **ON**.
- B. Authentication Port** (Public WAN / WLAN) Connection.
Please use a Straight-through Ethernet cable to connect the DSA-3100 to a switch or a wireless access point to provide public access to your broadband connection. The Authentication LED light will illuminate to indicate a proper connection. If the Authentication LED does not illuminate, please check the device's physical connections.
- C.** Insert an Ethernet cable to the **Local Network** (Private LAN) port on the back panel of the DSA-3100. Connect the other end of the Ethernet cable to a switch. If the Local Network LED illuminates, it means you have a proper connection.
- D.** Insert an Ethernet cable into the WAN port on the back panel of the DSA-3100. Connect the other end to a router or directly to a high speed cable or DSL modem. If the connection is live, then the WAN LED will illuminate.



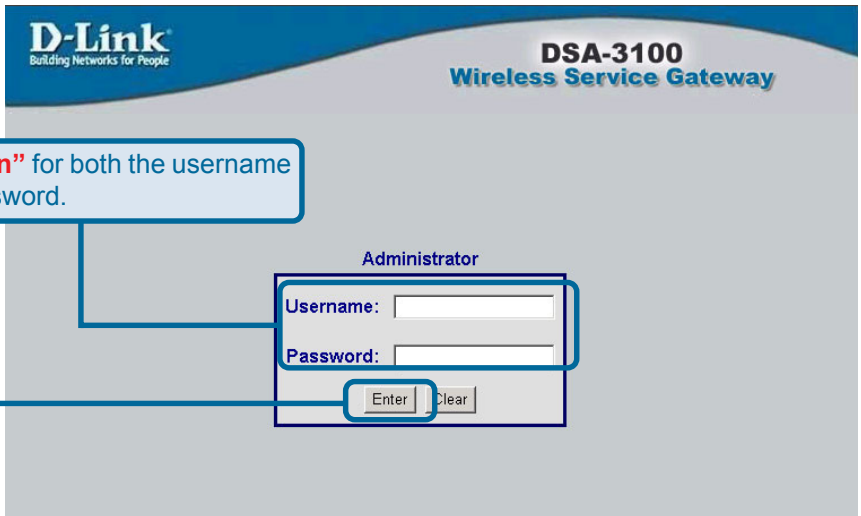
4

Using The Setup Wizard

Open your Web browser and type "**https://192.168.0.40**" into the URL address box. Then press the **Enter** or **Return** key.

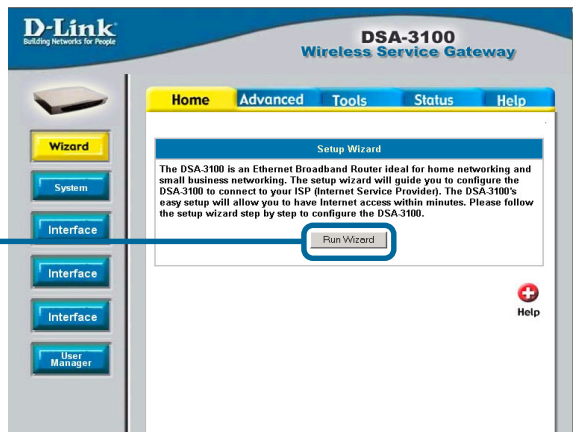


Type "**admin**" for both the username and the password.



Click **Enter**

Once you have logged in, the **Home** screen will appear.



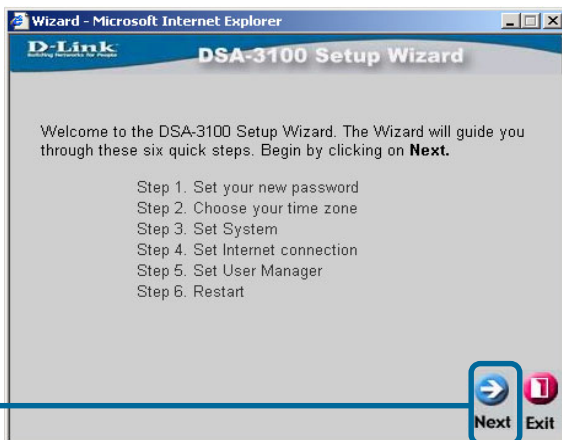
Click **Run Wizard**

4

The Setup Wizard (continued)

You will see the following screens

Click **Next**



Set up your new password.

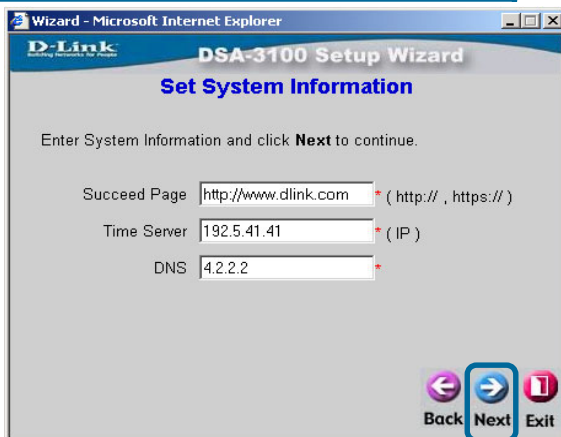
You have the option to establish a password.

Click **Next**



Set **System Information** in the fields provided to you. The **Succeed Page** is the URL that you are directed to when you have been successfully Authenticated. The **Time Server** and **Domain Name Server (DNS)** may be required.

Click **Next**



4

The Setup Wizard (continued)

At this point, the setup wizard will ask you for your Internet connection type. If you have a Dynamic or PPPoE connection, you will be brought to the corresponding page.

Select an **Option**

Click **Next**

Wizard - Microsoft Internet Explorer

D-Link
Building Networks for People

DSA-3100 Setup Wizard

Select Internet Connection Type (WAN)

Select the connection type to connect to your ISP. Click **Next** to continue.

- ☐ Static IP Address Choose this option to set static IP information provided to you by your ISP.
- ☒ Dynamic IP Address Choose this option to obtain an IP address automatically from your ISP. (For most Cable modem users)
- ☐ PPPoE Choose this option if your ISP uses PPPoE. (For most DSL users)

Back Next Exit

Set Interface Configuration - Authentication. You will be prompted to enter the settings for the Managed "Public" Network. You may also switch the **DHCP Server** ON or OFF.

Click **Next**

Wizard - Microsoft Internet Explorer

D-Link
Building Networks for People

DSA-3100 Setup Wizard

Set Interface Configuration -- Authentication

Select the connection type to connect to your ISP. Click **Next** to continue.

IP Address

Subnet Mask

- ☐ DHCP Disable
- ☒ DHCP Enable

Back Next Exit

If you selected **Dynamic IP Address**, this screen will appear:

Enter the settings in the fields provided to setup the distribution of IP Addresses to clients on your network.

Click **Next**

Wizard - Microsoft Internet Explorer

D-Link
Building Networks for People

DSA-3100 Setup Wizard

Set DHCP

Set DHCP. Click **Next** to continue.

DHCP Pool Start IP Address

DHCP Pool End IP Address

Domain Name

DNS Primary IP Address

DNS Secondary IP Address

Back Next Exit

4

The Setup Wizard (continued)

Select the **User Manager** you wish to use based on the Authentication type are you are using. In this Quick Installation Guide we will be using “**Local**” user database. The DSA-3100 also supports **POP3**, **RADIUS** and **LDAP** for authentication.

Click **Next**

Wizard - Microsoft Internet Explorer

DSA-3100 Setup Wizard

Select User Manager

Select User Manager. Click **Next** to continue.

☒ Local Choose this option to set Local.
☐ POP3 Choose this option to set POP3.
☐ RADIUS Choose this option to set RADIUS.
☐ LDAP Choose this option to set LDAP.

Back Next Exit

Next you will be given the chance to **Add a User**. You can bind User Accounts to a **MAC Address** if you wish to. Press **ADD** after entering the information. Repeat this step to add more users to the DSA-3100.

Click **Next**

Wizard - Microsoft Internet Explorer

DSA-3100 Setup Wizard

Add User

Add User. Click **Add** to add one user. Click **Next** to continue.

Username

Password

MAC (XXXXXXXXXX)

ADD

Back Next Exit

After **Restarting** the DSA-3100, the basic setup for the unit is complete. Please refer to the **User Manual** for other advanced settings.

Click **Restart**

Wizard - Microsoft Internet Explorer

DSA-3100 Setup Wizard

Setup Completed

The Setup Wizard has completed. Click on **Back** to modify changes or mistakes. Click **Restart** to save the current settings and reboot the DSA-3100.

Back Restart Exit

Technical Support

You can find software updates and user documentation on the D-Link website.

D-Link provides free technical support for customers within the United States and within Canada for the duration of the warranty period on this product.

U.S. and Canadian customers can contact D-Link technical support through our website, or by phone.

Tech Support for customers within the United States:

D-Link Technical Support over the Telephone:

(877) 453-5465

24 hours a day, seven days a week.

D-Link Technical Support over the Internet:

<http://support.dlink.com>

[email:support@dlink.com](mailto:support@dlink.com)

Tech Support for customers within Canada:

D-Link Technical Support over the Telephone:

(800) 361-5265

Monday to Friday 8:30am to 9:00pm EST

D-Link Technical Support over the Internet:

<http://support.dlink.ca>

[email:support@dlink.ca](mailto:support@dlink.ca)

