



Install Guide

Version 1.00

DSM-120

Wireless Music Player

System Requirements

Minimum System Requirements:

- Windows® XP/2000
- CPU 500MHz plus processor
- Memory Size: 128MB or above
- 50MB of available hard drive space and a wireless or Ethernet network.

Package Contents



**DSM-120
Wireless Music Player**



Remote Control



**Installation CD
with
Install Guide & Manual**



**Standard Composite RCA
Audio Cable**



Stand



CAT5 Ethernet Cable



Mini-USB Cable



12V DC Power Adapter



Using a power supply with a different voltage rating will damage this product and void the warranty.

If any of the above items are missing, please contact your reseller.

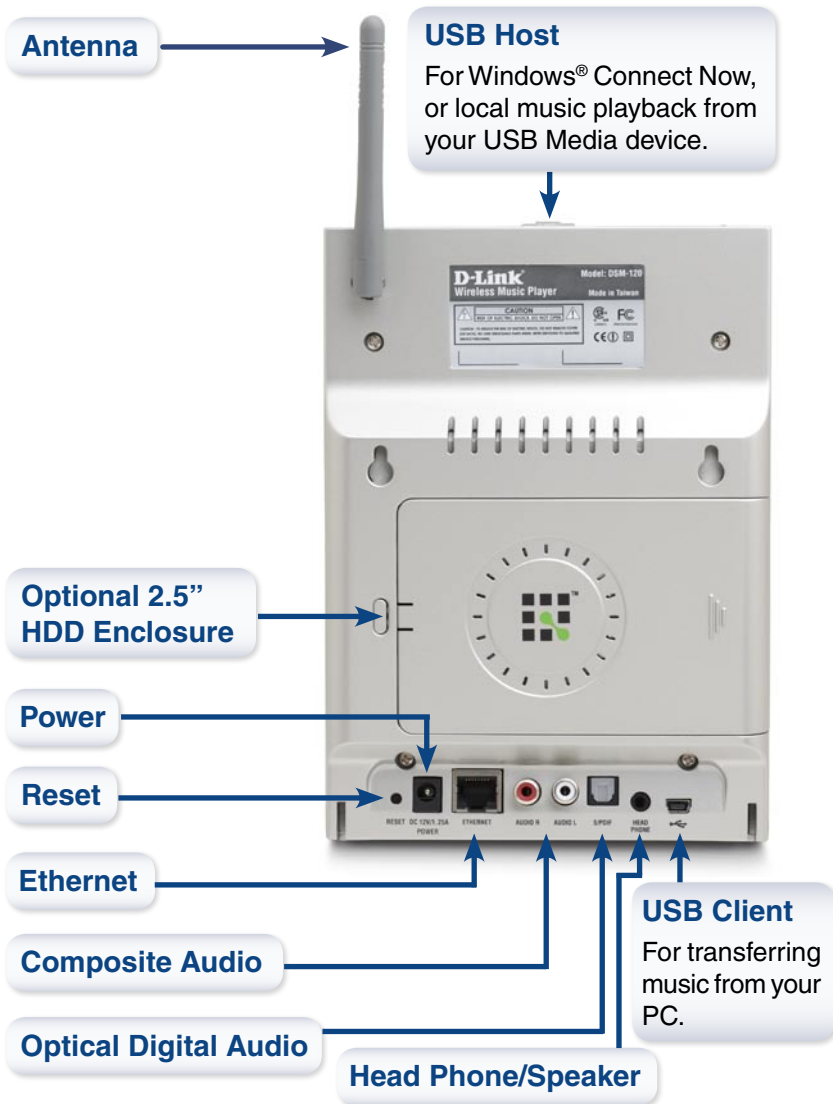
- This device complies with Part 15 of the FCC Rules. Operation is subject to the following two conditions:
 - (1) This device may not cause harmful interference, and
 - (2) This device must accept any interference received, including interference that may cause undesired operation.
- This unit is to be used with a power supply, P/N UWP01521120U or equivalent.

Hardware Overview

Front Panel



Back Panel Connections



Installing the D-Link® Media Server Software

Install the D-Link® Media Server Software on each PC that contains music, video, or photo files you wish to use with the DSM-120.

Follow the steps in this section to install the software.

Insert the DSM-120 CD-ROM into the CD-ROM drive and the following screen will appear.

Click on **Install D-Link® Media Server**

If the screen on the right does not appear, go to **My Computer** and double-click on the **CD-ROM** drive. The screen at the right will appear.

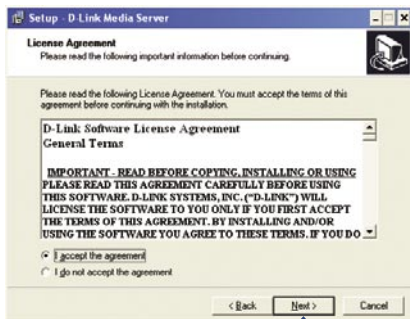


The D-Link® Media Server Setup Wizard will appear.



Click **Next**

The D-Link license agreement screen appears.



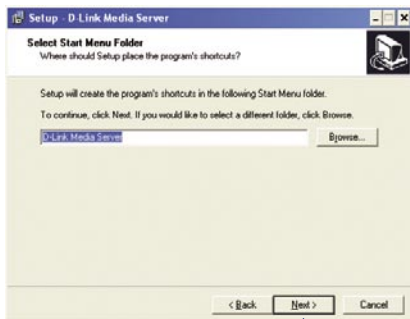
Click **Next**

Choose a destination location or accept the default location. This is where the D-Link Media Server software will be copied to on your system.



Click **Next**

Choose a start menu folder or accept the default location.



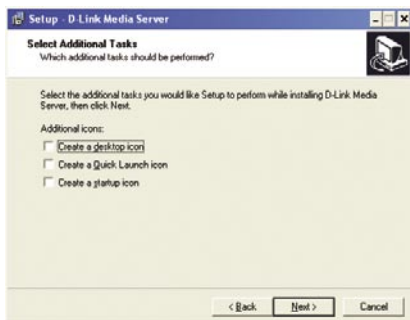
Click **Next**

Select the icons you want created.

Select **Create a desktop icon** to access the program from your desktop.

Select **Create a Quick Launch icon** to access the program from your taskbar.

Select **Create a startup icon** so the program launches on startup.



Click **Install**

Check **Launch D-Link® Media Server**



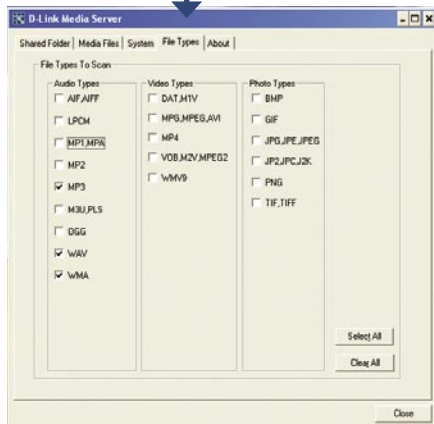
Click **Finish**

Configuring the D-Link® Media Server Software

If you checked the **Launch D-Link® Media Server** check box, the following screens will be displayed.

The **File Types** tab is where you select the types of audio files that you want to share.

Note: Your DSM-120 Wireless Music Player supports MP3, WAV and WMA files.



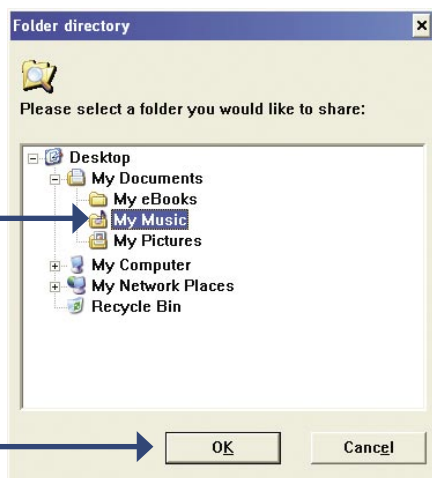
The **Shared Folders** tab is where you select the folders that contain your audio files.



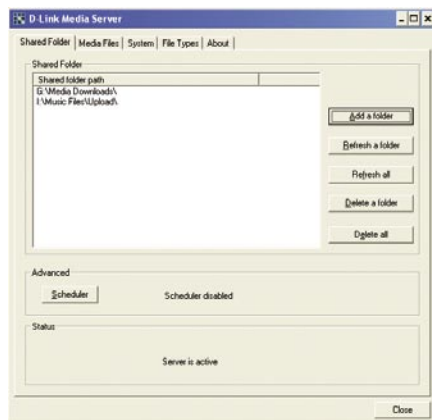
Click **Add a Folder**

Select the folder containing the files you wish to share.

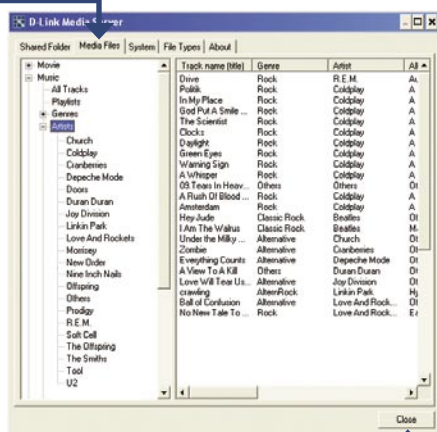
Click **OK**



Repeat the steps until all of the folders containing audio you want to share have been added.



The **Media Files** tab will show all your audio files.



Click **Close**

Connecting the DSM-120

All audio and networking connections are located on the rear panel of the DSM-120.

Audio Connections

Select one of three ways to connect audio to your DSM-120:

- **Composite Audio**

Plug the supplied red and white connectors into the AUDIO R and AUDIO L (color-coded matching) jacks on the DSM-120.

Plug the opposite ends to the matching jacks on your audio system.



- **Optical Digital Audio**

Connect an optical audio connector into the S/PDIF connector on the DSM-120, and connect the matching opposite end of the cable to the audio input of your audio system.

Note: This cable is not supplied.



- **Head Phone**

Plug a standard mini-plug head phone jack into the HEAD PHONE connector on the DSM-120.

You can also connect standard PC speakers to the head phone jack.



Note: *Head Phones and Speakers are not supplied.*

Network Connection

• Wireless Connection

If you are connecting wireless using the built-in antenna, then you do not need to connect the supplied Ethernet cable.

For an optimal wireless connection, place the antenna at a 90° angle as shown in the image to the right.

• RJ-45 Ethernet Connector

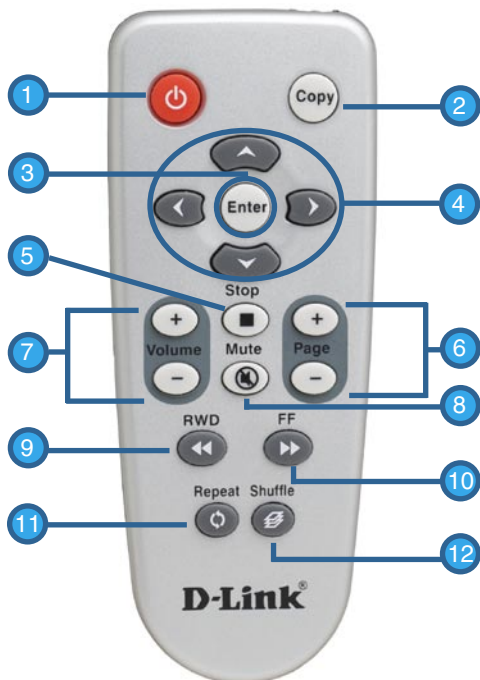
If you are connecting wired, insert the supplied Ethernet cable into the Ethernet network cable connector. Attach the other end to a router or hub on your network.



Note: You may have an Ethernet cable plugged into the unit and also connect wirelessly. Neither will interfere with the other, but only one network can be accessed at a time (wired or wireless). The network connection type is selected in the Setup Wizard and can also be changed by going to the Setup Menu. To access the Setup Menu, select **SETUP** on the menu and press Enter on the remote control.

Using the Remote Control

1. Power
2. Copy
3. Enter & Play/Pause
4. Navigation Buttons
up arrow = Previous
down arrow = Next
5. Stop
6. PAGE + & -
7. VOLUME + & -
8. Mute
9. RWD
10. FF
11. Repeat
12. Shuffle



On the following pages (DSM-120 Setup Wizard), you may be required to enter alphanumeric characters. To edit information on a screen, press the **Enter** button. To enter letters and/or numbers, use the navigation buttons (see below):

Toggle **Up & Down** allows you to view all alphanumeric characters.

Toggle **Left** deletes an alphanumeric character.

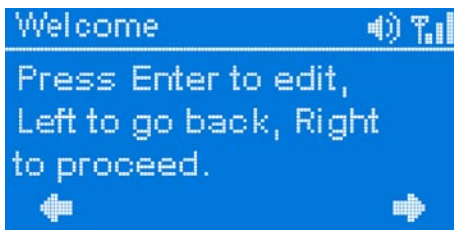
Toggle **Right** creates a new instance of an alphanumeric character.



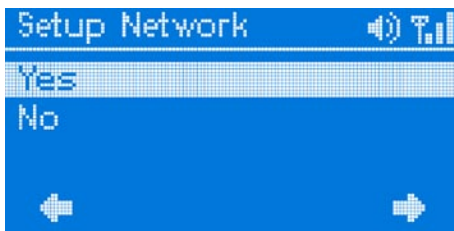
DSM-120 Setup Wizard

Upon initial startup, the DSM-120 displays the Setup Wizard. The Setup Wizard will guide you through the necessary steps for configuring the DSM-120. You can also use Windows® Connect Now (WCN) to simplify the wireless setup, skip to page 21.

At the **Welcome** screen, press the **right arrow** button to proceed.



To skip the Setup Wizard, select **No**.
Select **Yes** to continue.

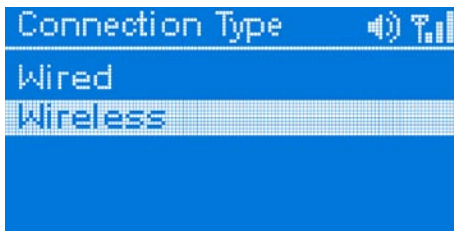


To enter a **Device Name** press **Enter**.
To enter alphanumeric characters, please see page 14.



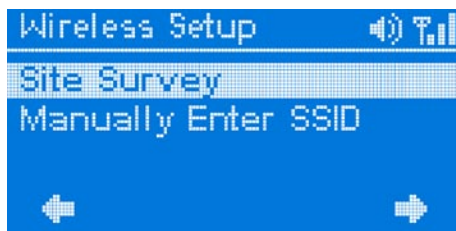
Select your network **Connection Type**.

If selecting **Wired**, skip to page 18

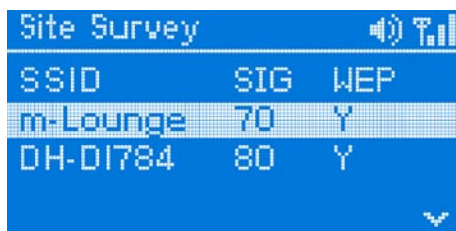


Wireless Connection

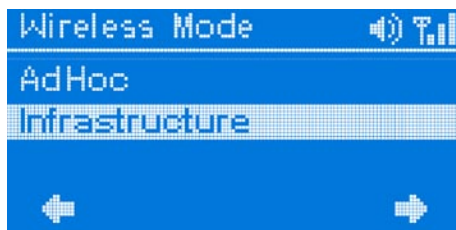
Select **Site Survey** or **Manually Enter SSID**.



For the wireless network connection, please select the SSID of the network.



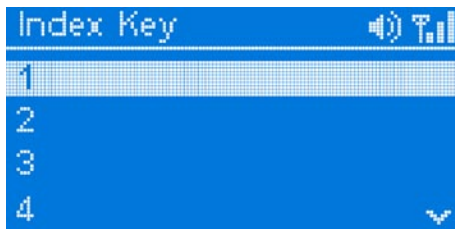
Select your **Wireless Mode**. Your options are either **Ad-Hoc** or **Infrastructure**.



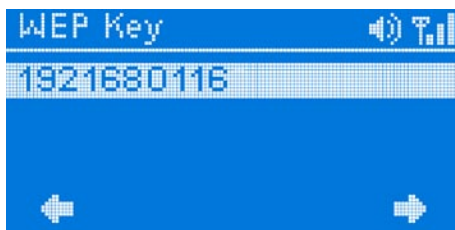
Select your encryption setting. Your options are **Disable**, **64BitHEX**, **128BitHEX**, **64BitASCII**, and **128BitASCII**.



Select your **Index Key**. You can select numbers between **1** and **4**.



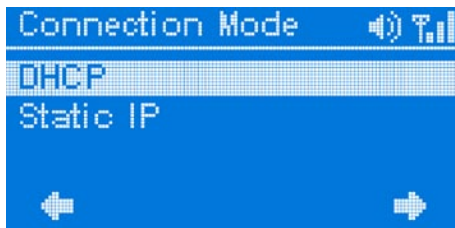
Provide a **WEP key**. The key you enter here must match the key of the wireless network exactly.



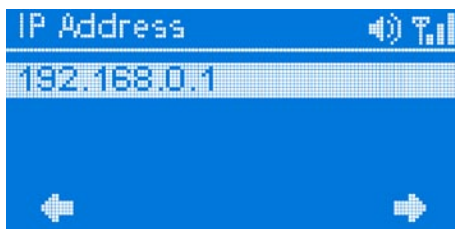
Note: This screen is only available if you do not select **Disable** at the WEP screen.

Connection Mode

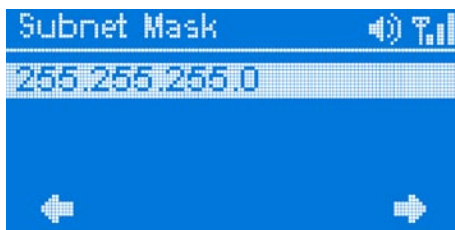
If selecting **DHCP**, skip to page 20



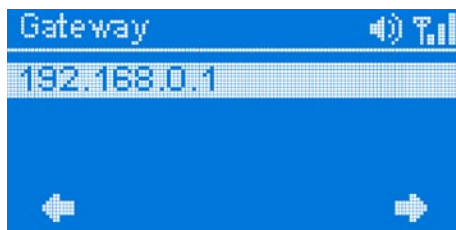
Provide an **IP Address** if you selected **Static IP**.



Provide a **Subnet Mask** if you selected **Static IP**.

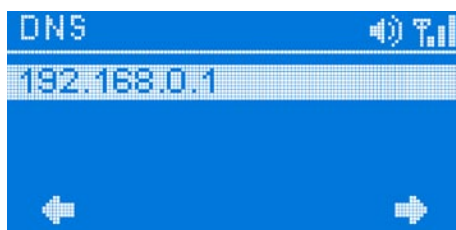


Provide a **Gateway** if you selected **Static IP**.



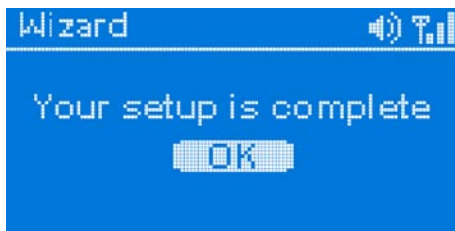
The screenshot shows a blue-themed configuration screen titled "Gateway". At the top right, there is a speaker icon and a signal strength indicator. Below the title, the IP address "192.168.0.1" is displayed in a white, monospaced font on a dark blue background. At the bottom of the screen, there are two white arrow icons: a left-pointing arrow on the left and a right-pointing arrow on the right.

Provide a **DNS** if you selected **Static IP**.



The screenshot shows a blue-themed configuration screen titled "DNS". At the top right, there is a speaker icon and a signal strength indicator. Below the title, the IP address "192.168.0.1" is displayed in a white, monospaced font on a dark blue background. At the bottom of the screen, there are two white arrow icons: a left-pointing arrow on the left and a right-pointing arrow on the right.

Your Setup is Complete



For detailed usage instructions and information on supported file types, please refer to the User Manual that is located on the MediaLounge™ CD-ROM.

Your MediaLounge™ DSM-120 is now ready to stream music to your home entertainment center.

From this home screen, you can access PC Music, Local Music, or Online Music.

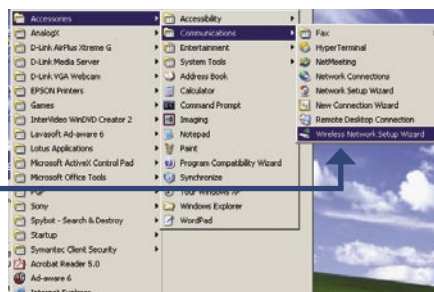


Configure Wireless Settings with Windows® Connect Now (WCN)

If you already have wireless settings configured on your PC, instead of using the setup wizard, you can use Windows® Connect Now (WCN) to configure the wireless settings on your DSM-120.

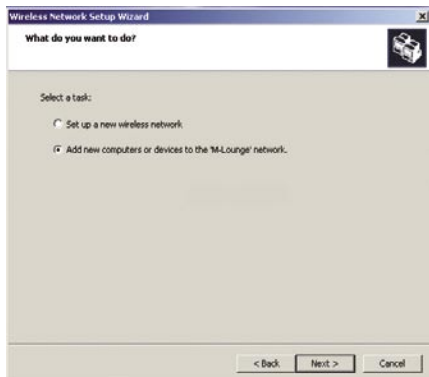
Note: WCN is only available on PCs running Windows XP with Service Pack 2 installed.

Go to Start > All Programs > Accessories > Communications and click **Wireless Network Setup Wizard**.



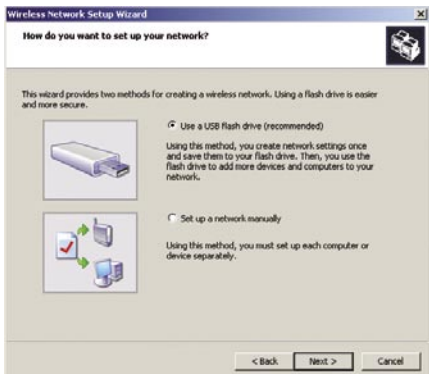
Click **Next** to continue

Select the option to add new computers or devices to your existing wireless network.



Click **Next** to continue

Select the option **Use a USB flash drive**, to save your wireless network settings.



Click **Next** to continue

Plug your flash drive into a USB port on this computer.



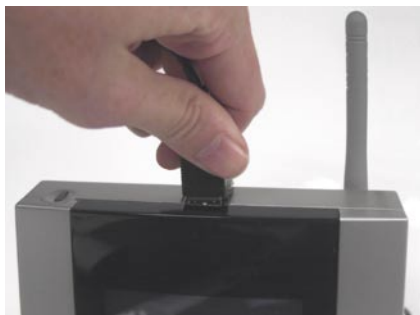
Click **Next** to continue

This screen will appear when the wireless settings have been saved to the USB flash drive.

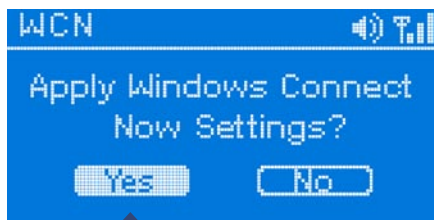


Next, remove the USB Flash Drive from your PC and insert it into the USB port on the DSM-120, which is located on top of the unit.

The DSM-120 will then detect your USB and scan it.

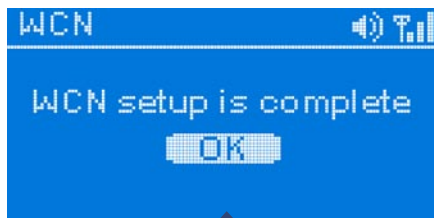


The following screen will appear on the DSM-120 after Windows® Connect Now has been detected.



Select **Yes** to continue

The following screen will appear on the DSM-120 when the WCN setup has completed.



Select **OK** to continue

Next, remove the USB Flash Drive from the DSM-120 and insert it back into the USB port on your PC.



Click **Next** to continue



Click **Finish**

You have Completed Configuring your Wireless Settings using WCN!

Notes

Notes

Technical Support

D-Link's website contains the latest user documentation and software updates for D-Link products.

D-Link provides free technical support for customers within the United States and Canada for the duration of the product's warranty period.

U.S. and Canadian customers can contact D-Link Technical Support through our website or by phone.

United States

Telephone

(877) 453-5465

Twenty four hours a day, seven days a week.

World Wide Web

<http://support.dlink.com>

E-mail

support@dlink.com

Canada

Telephone

(800) 361-5265

Monday through Friday, 7:30am to 12:00am EST.

World Wide Web

<http://support.dlink.ca>

E-mail

support@dlink.ca



Version 1.0

©2005 D-Link Corporation/D-Link Systems, Inc. All rights reserved. D-Link and the D-Link logo are registered trademarks of D-Link Corporation or its subsidiaries in the United States and other countries. Other trademarks are the property of their respective owners. All references to speed are for comparison purposes only. Product specifications, size, and shape are subject to change without notice, and actual product appearance may differ from that depicted herein. Visit www.dlink.com for more details.

DSM-120 09192005