

DCS-70
Release 1.0

Network Camera Outdoor Enclosure

Quick Install Guide

Package Contents

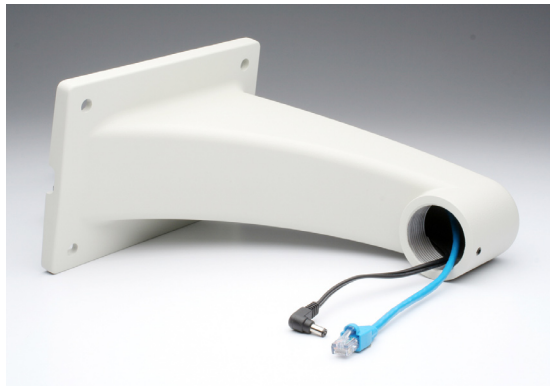


1. Housing
2. Cover
3. Wall mount bracket
4. Power Supply
5. DC to DC Cable
6. Cross iron plate
7. Hardware (screws, washers, allen wrench)

Installation

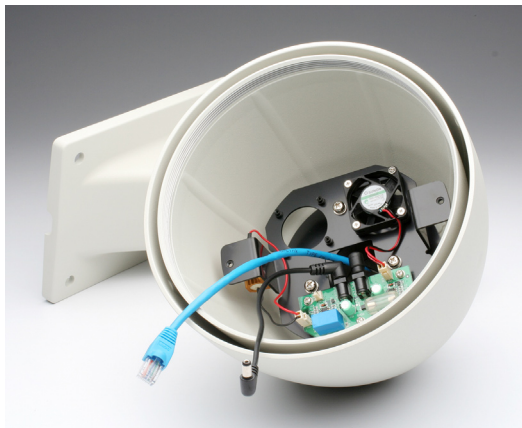
Step 1

Pull the Ethernet and power cable through the wall mount bracket.

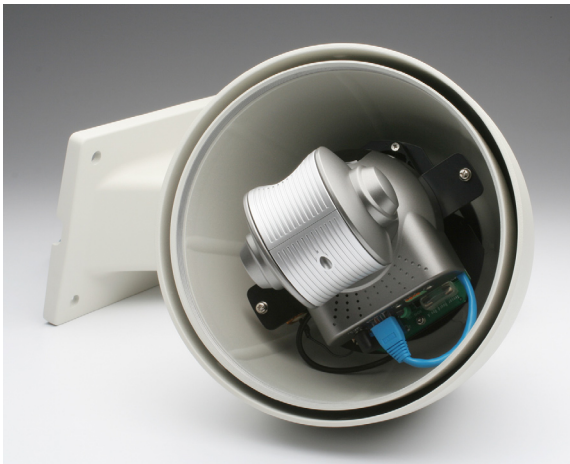


Step 2

Push the power supply and Ethernet cable through the center of the housing. Then, insert the power plug into the power socket labeled **DC12V IN** and attach one end of the **DC to DC** cable into the power socket labeled **DC12V OUT**.

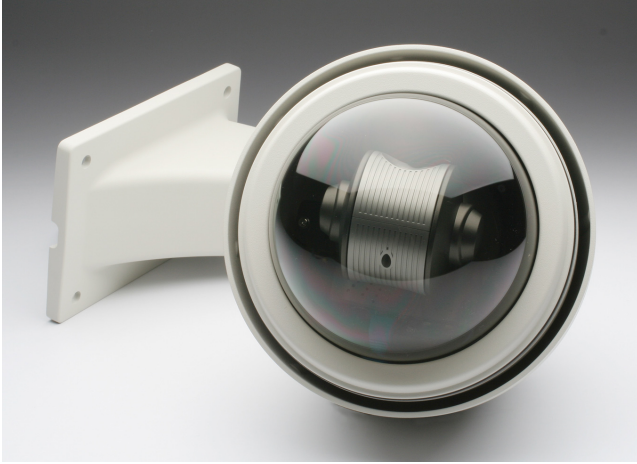


Screw the camera base to the cross iron plate.



Step 5

Screw the cover on to the housing.



Notes

Notes

Technical Support

D-Link's website contains the latest user documentation and software updates for D-Link products.

U.S. and Canadian customers can contact D-Link Technical Support through our website or by phone.

United States

Telephone

(877) 354-6555

World Wide Web

<http://support.dlink.com>

Canada

Telephone

(877) 354-6560

World Wide Web

<http://support.dlink.com>



Version 1.0
August 11, 2008

Copyright ©2008 D-Link Corporation/D-Link Systems, Inc. All rights reserved. D-Link and the D-Link logo are registered trademarks of D-Link Corporation or its subsidiaries in the United States and other countries. Other trademarks are the property of their respective owners. Actual data throughput will vary. Network conditions and environmental factors, including volume of network traffic, building materials and construction, and network overhead lower actual data throughput rate. Product specifications, size and shape are subject to change without notice, and actual product appearance may differ from that depicted on the packaging. Visit www.dlink.com for more details.