



Install Guide

Version 2.0

DCS-900
Fast Ethernet Internet Camera

System Requirements

- Windows® 2000 (SP4) or XP (SP2) operating system.
- PC with 1.3GHz processor or above; at least 128MB RAM
- Internet Explorer 6.0 or Netscape Navigator 7.0 or above.
- An existing 10/100 Ethernet-based network.

Package Contents



DCS-900
Fast Ethernet Internet Camera



Power Adapter



CAT5 Ethernet Cable



Camera Stand



Manual and Software on CD

If any of the above items are missing, please contact your reseller.

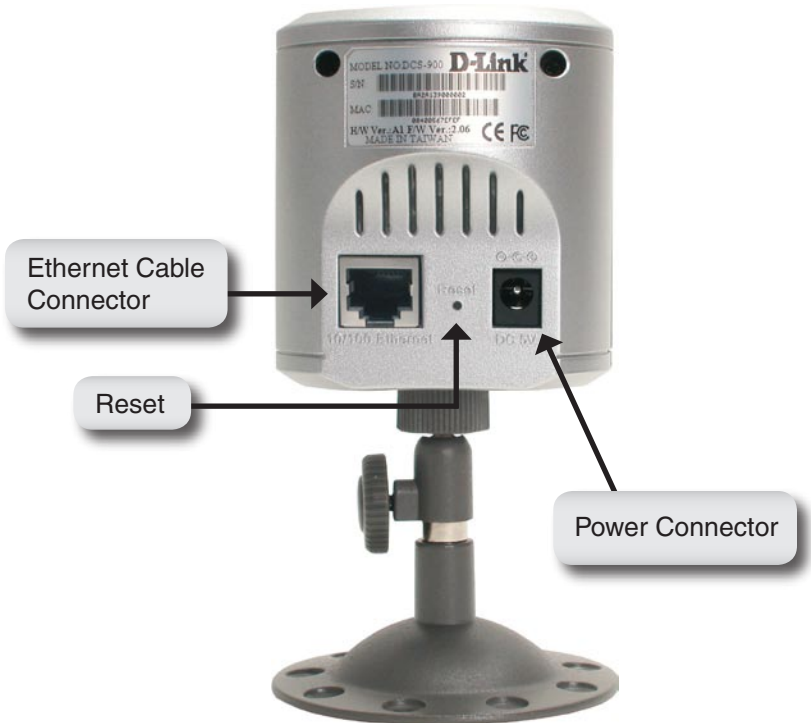
Hardware Overview

Front Panel LEDs



Hardware Overview

Back Panel Connections



Installation

Attach the Swivel Stand

Locate the stand mount on the bottom panel of the DCS-900 and screw on the swivel stand to the base of the DCS-900.



Connect the Ethernet Cable

Connect the included Ethernet cable to the network cable connector located on the back panel of the DCS-900 and attach it to the network. Network connectivity is confirmed when the green LED Indicator on the DCS-900, located below the Power LED, is illuminated.



Attach the Power Supply

Attach the power supply to the DC power input connector located on the rear panel of the DCS-900 and connect it to your local power supply.



Note: Power source is confirmed when the red LED Power Indicator located to the right of the lens on the DCS-900 is illuminated.

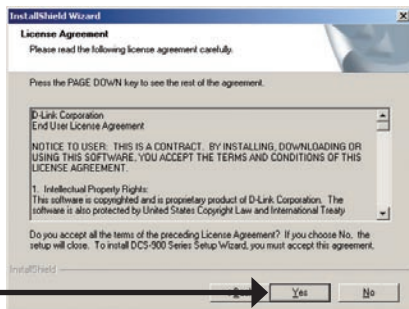
Configuration

You are now ready to run the Setup Wizard, which will guide you quickly through the installation process.

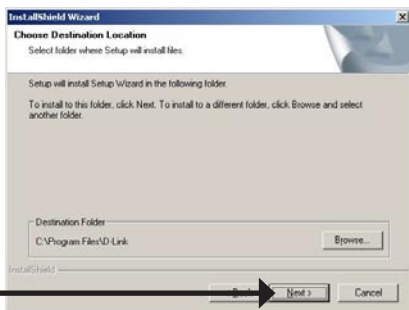
Insert the **D-Link** Driver CD into your CD-ROM drive.



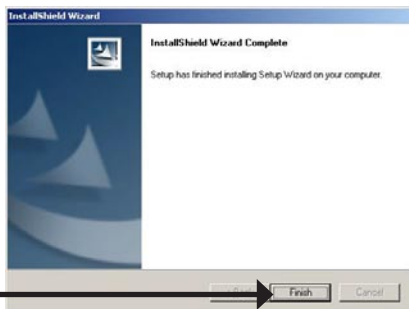
Click **Yes**



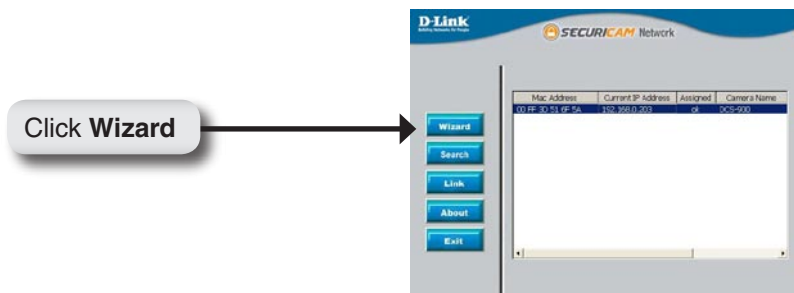
Click **Next**



Click **Finish**



To run the Setup Wizard, click on: **Start > Programs > D-Link Setup Wizard**. Your camera's IP Address will be displayed here along with its corresponding MAC Address.



You must change the **Admin ID** and **Password** immediately to protect your camera against unauthorized access.

By default, the Admin ID and Password are blank.

To change the Admin ID and Password, select both **Change** boxes and enter a **New ID** and **New Password**.



Enter an **IP Address** and **Subnet Mask** for your camera if you want to change the current settings. Enter your **Gateway** and **DNS** settings. These settings must correspond with your network settings for you to access the camera. If you are unsure of what these settings should be, check with your network administrator.



The screenshot shows the 'Set IP Address' configuration page for a D-Link SECURICAM Network. It features several input fields for network settings: IP Address (192.168.0.29), Subnet Mask (255.255.255.0), Default Gateway (192.168.0.1), DNS 1 (192.168.0.1), and DNS 2 (4.2.2.2). At the bottom right, there are three buttons: 'Back' (left arrow), 'Next' (right arrow), and 'Exit' (power icon).

Click **Next**

If you need to make any changes, click **Back** to modify your settings. Otherwise, click **Restart** to save and apply your settings.



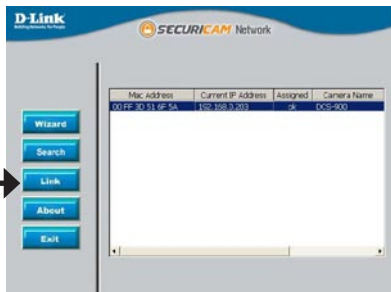
The screenshot shows the completion of the setup wizard. It displays fields for Admin ID, Password, IP Address (192.168.0.203), Subnet (255.255.255.0), DNS 1 (4.2.2.2), and DNS 2 (4.2.2.3). Below these fields, a message states: 'The Setup Wizard has completed. Click on Back to modify your settings. Click Restart to save your current settings and reboot the Internet Camera.' At the bottom right, there are two buttons: 'Back' (left arrow) and 'Restart' (circular arrow).

Click **Restart**

Your setup is complete!

Click **Link** to launch your web browser and view your images.

Click **Link**



The Home screen of your camera can be accessed from the Setup Wizard using the **Link** button. You can also use your favorite Web browser, type “<http://address>” in the address box where **address** is the IP address that you assigned to the DCS-900 from the previous section. Press **Enter**.

Click **ActiveX** or **Java** to view your video images.

- Make sure that you have the latest version of Java installed on your computer to ensure proper operation when viewing the video in Java mode. Java can be downloaded for free from Sun's web site. (<http://www.java.com>)
- When you connect to the home page, you will be prompted to download ActiveX. If you want to use ActiveX to view your video images instead of Java, then you must download ActiveX.
- Please refer to the Manual located on the CD-ROM for additional information regarding all features and instructions related to the DCS-900.

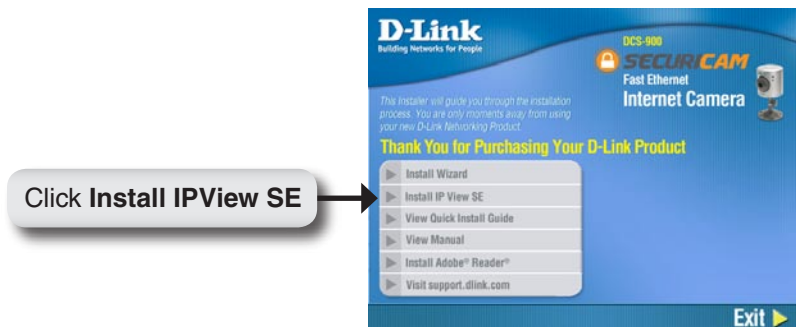


Your Basic Setup is Complete!

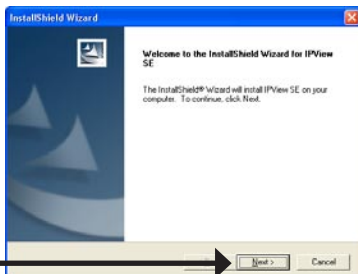
IPView SE Application Installation

IPView SE software is included for administrators to manage up to 4 DCS-900s remotely. Administrators can also record to hard drive and configure advanced settings for the DCS-900. IPView SE is a complete software management tool for the DCS-900 and includes all configurable settings available in the web configuration utility.

Insert the CD-ROM into the CD-ROM drive. A menu screen will appear as shown below.



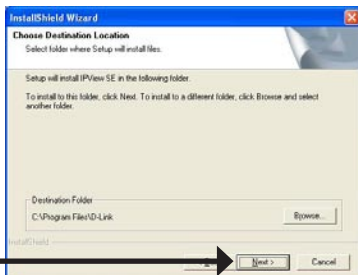
Click **Next**



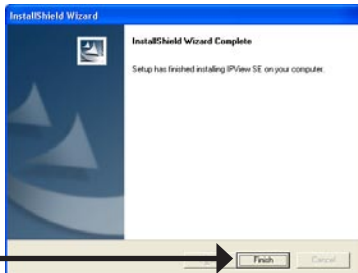
Click **Yes**



Click **Next**



Click **Finish**




After successfully installing the IPView SE, the application program for the DCS-900 is automatically installed to \Programs\IPView SE Directory.

To start IPView SE, click on Windows® Start > Programs > IPView SE > IPView SE.

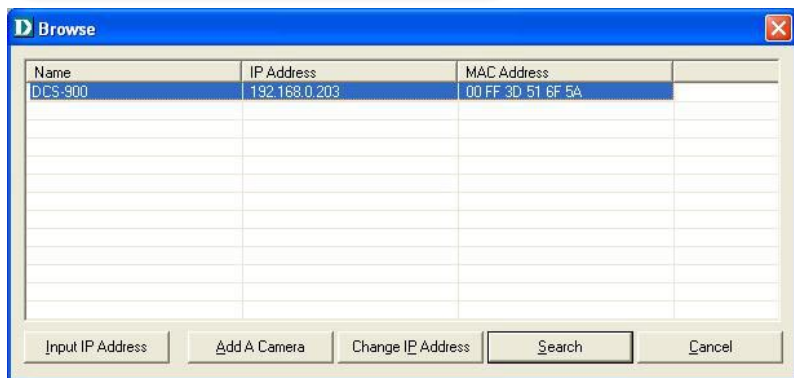
Once the IPView SE application control panel is executed, the interface will appear:



Add a New Camera

To add a new camera select the **Camera** button  from the IPView SE. Make sure that the green lights are on when clicking the camera button.

A green light under the camera button means that there is already a camera connected.



Select the camera you would like to connect to and click **Add A Camera**. If the camera is not listed in this list, click the **Input IP Address** button. Enter the IP Address of the camera in the specified field and click **Add**. If the IP Address is entered incorrectly or if you have a bad network connection, a dialog box will appear to notify you of the error. To add cameras in IPView SE, check that you have your network configured correctly. To add a remote camera, you need to have Internet access.



If you are unsure of the IP Address of the camera, you can click on **Search** to search for all available cameras that are installed on your local area network.

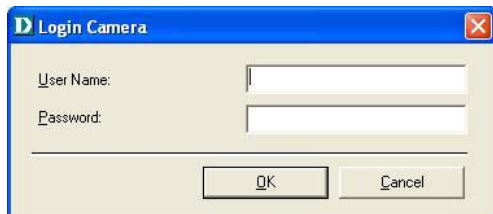
Note: Only cameras on your local area network can be located using **Search** in IPView SE. If you want to add a camera via the Internet, you must enter in a public IP Address. Please note that if your camera is behind a router, you will need to enter your router's WAN IP followed by a colon, then the port number that is assigned to your camera. As in example 10.10.10.80:800, where 10.10.10.80 is your router's WAN IP and :800 is the port that your camera is using.

Highlight the camera you wish to add and click on **Add**. The camera will automatically be added into the IPView SE list view. If you add the same camera more than once you will receive the following message (see below).



If the **Login Camera** dialog box appears, enter the correct **User Name** and **Password**. Click **OK**. The camera will be added into IPView SE. If the **User Name** and **Password** are entered incorrectly, the camera will not be added into IPView SE.


The Login Camera dialog box will appear only if you have already set the **Username** and **Password** during the Web Configuration setting.



Once you login, the following screen will appear.



How to Format the Camera View

Select the **Combine** button  on the IPView SE and you should see all four cameras combined (see image below).



A maximum of 4 cameras can be viewed simultaneously with IPView SE.



Select any of the four cameras from the View Mode. If a green light is next to the camera button, then this indicates that a camera is connected to the IPView SE control panel.

Please refer to the Manual located on the CD-ROM for additional information regarding IPView SE.

Notes

Notes

Technical Support

D-Link's website contains the latest user documentation and software updates for D-Link products.

U.S. and Canadian customers can contact D-Link Technical Support through our website or by phone.

United States

Telephone

(877) 45D-Link (453-5465)

Twenty four hours a day, seven days a week.

World Wide Web

<http://support.dlink.com>

E-mail

support@dlink.com

Canada

Telephone

(800) 361-5265

Monday through Friday, 7:30am to 9:00pm EST.

World Wide Web

<http://support.dlink.ca>

E-mail

support@dlink.ca



Version 2.0
Revised 12/22/2005

Copyright ©2006 D-Link Corporation/D-Link Systems, Inc. All rights reserved. D-Link, the D-Link logo are registered trademarks of D-Link Corporation or its subsidiaries in the United States and other countries. Other trademarks are the property of their respective owners.