



User Manual

MainStage™ TV Adapter for Intel® Wireless Display

Preface

D-Link reserves the right to revise this publication and to make changes in the content hereof without obligation to notify any person or organization of such revisions or changes.

Manual Revisions

Revision	Date	Description
1.0	June 10, 2011	• Initial release

Trademarks

D-Link and the D-Link logo are trademarks or registered trademarks of D-Link Corporation or its subsidiaries in the United States or other countries. All other company or product names mentioned herein are trademarks or registered trademarks of their respective companies.

Copyright © 2011 by D-Link Systems, Inc.

All rights reserved. This publication may not be reproduced, in whole or in part, without prior expressed written permission from D-Link Systems, Inc.

Table of Contents

Preface..... i

 Manual Revisions.....i

 Trademarks.....i

Product Overview..... 1

 Package Contents 1

 System Requirements..... 1

 Introduction 2

 Hardware Overview..... 3

 Connections..... 3

Installation4

WiDi Settings 7

 Behavior Properties 7

 Adapter Properties..... 8

 Resize TV Picture..... 9

 Test Audio 10

 About..... 11

Help/Troubleshooting..... 12

Technical Specifications 14

Contacting Technical Support 15

Warranty..... 16

Registration22

Package Contents



DHD-131 MainStage™ TV Adapter



HDMI Cable



Power Adapter

Note: Using a power supply with a different voltage rating than the one included with the DHD-131 will cause damage and void the warranty. If any of the above items are missing, please contact your reseller.

System Requirements

Requirements	<ul style="list-style-type: none">• Laptop featuring Intel® Wireless Display and powered by a 2nd generation Intel® Core™ processor.• TV with an HDMI or AV Composite input
Full HD 1080P Resolution	<p>To view full 1080P HD on your TV, you will need the following:</p> <ul style="list-style-type: none">• Laptop with 1920 x 1080 screen in Clone mode or Huron River platform in Extend mode.• Firmware version 2.1.11.0 or higher (refer to Adapter Settings)• A 1080P HDTV using an HDMI connection only

Introduction

Make surfing the Web a part of your Home Theater Experience on your HDTV

Instead of crowding around a desk with all your friends just to show them this really funny video you saw on YouTube the other day, wouldn't it be better if all of you sat comfortably on the couch to watch that same video, but on your big screen TV, with popcorn? Watch movies from Netflix or shows from Hulu. Listen to Internet radio using Pandora or just blast 5.1 surround sound from a Blu-Ray movie³.

One Button Connection

The D-Link MainStage™ adapter can do just that. It acts as a bigger, better, HD display for your Intel® Wireless Display powered laptop. It wirelessly 'sends' your laptop² display onto your TV, enabling you to surf the web, view home movies from your home network, or your laptop², right from the couch, with the push of a button.

Two Screens at Once

Drag a movie onto the Windows extended screen to watch on your TV, and continue using your laptop to chat, email, and work on a document.

Great for Presentations

The D-Link MainStage™ adapter is also great for presentations. Just grab your Intel WiDi enabled laptop and 'send' your colorful and animated presentations onto your business flat-panel equipped conference room with the push of a button.

Features Include

- Quick and easy secure setup
- Surf the web from your couch
- View what's on your laptop², on your TV¹
- HDMI Connection
- Composite A/V Connections
- No Codec Limitations⁴
- No DRM Issues⁴
- Play movies in 1080p³
- Full 5.1 digital surround sound³
- 24/7 Basic Installation Support⁵
- 1-Year Warranty⁶

¹ Any device, content, or application you can access on your home network or your PC .

² Works only with laptops with Intel® Wireless Display powered by the Intel® Core™ Processor Family.

³ 1080p resolution and digital surround sound available only if supported by file format. Requires TV that supports 1080p and an audio system that supports digital surround sound.

⁴ Codec Limitations and DRM issues are based off of what your laptop can and cannot play.

⁵ 24/7 Basic Installation Support is available only in the USA for the first 30 days from date of original purchase.

⁶ 1-Year Limited Warranty available only in the USA and Canada.

Hardware Overview

Connections



1	Reset	<p>There are 3 functions available:</p> <ul style="list-style-type: none">• Press for about 1/2 second to cycle forward through different display languages*. Press and hold for more than 1 second (less than 5 seconds) to cycle back.• Press and hold for 5 seconds to restore the router to its original default settings.• To reset to the original shipping firmware and default settings, turn the adapter off. Hold in the reset button and power on the adapter. Keep holding for about 5 seconds after you powered on.
2	HDMI Port	Connect to your TV's HDMI input port using the included HDMI cable. Must be used for 720P or higher HD resolution. Use for the best audio and video quality.
3	Composite Ports	Connect to your TV's composite input ports if you do not have or want to use HDMI. The yellow port is for video, and the white and red ports are for audio. Note for 720P or higher HD resolution, you must use an HDMI connection.
4	S/PDIF Port	Connect to your Audio system that uses an S/PDIF (Sony/Phillips Digital Interface Format) audio connection.
5	On/Off Button	Press the power button to power the device on and off.
6	Power Receptor	Receptor for the supplied power adapter.

* Refer to page 13 for language display information.

Installation

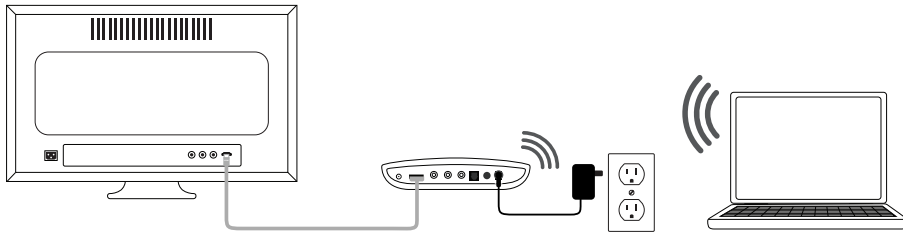
Below are steps to install and set up your MainStage™ TV Adapter.

Step 1

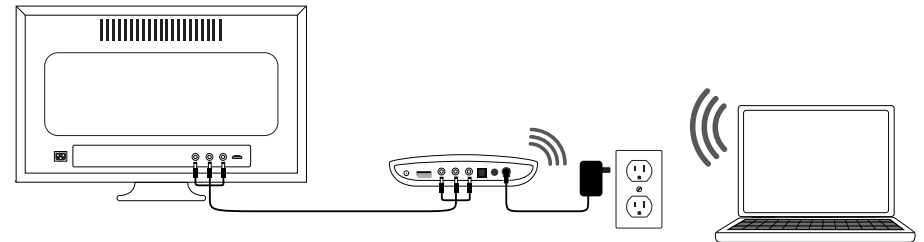
Connect an HDMI cable to the HDMI port on your MainStage TV Adapter and the other end into the HDMI Input on your TV. You may instead connect using composite connections if HDMI is not available.

Step 2

Connect the supplied power adapter to the back of the MainStage™ TV adapter and the other end to a power outlet or surge protector. The MainStage™ TV adapter LED is red when it powers up. Then the LED turns yellow to indicate it is ready, but is not yet wirelessly connected to your computer.



HDMI Connection



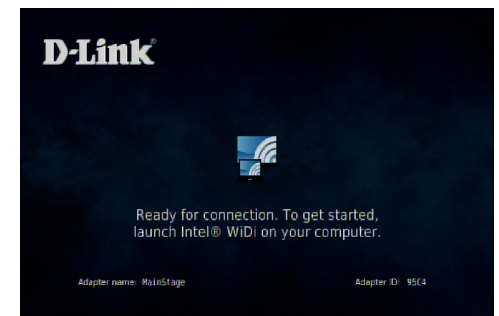
Composite Connection

Step 3

Power on your TV and select the correct TV input source. Please refer to your TV documentation for instructions on how to change your input source.

Step 4

The Startup screen displays on your TV within 30 seconds. If this screen does not appear, make sure your TV is set to the correct video input and all the cables are firmly secured.



Step 5

Launch the Intel® Wireless Display software on your Intel WiDi compatible laptop. Some laptops may have a WiDi Launch button or key or you can launch from Windows. Click **Start > Programs > Intel Corporation > Intel WiDi**.



During first-time set up the following may appear:

- **Firewall Alert** - Your firewall software may block the WiDi connection and alert you. If this appears, you will need to allow access for both private and public networks. Please refer to your firewall software for more information.
- **License Agreement** - Read the license agreement. If you agree, click **I agree to the terms of this license** to continue. If you do not agree, click **I do not agree** and the software will close.

Step 6

Use the Intel® Wireless Display software to scan and find the MainStage™ TV adapter. The screen below shows that the Intel® Wireless Display software has found the wireless adapter. Select the MainStage™ TV adapter listed under Detected Adapters and click **Connect**. The LED on the TV adapter will start flashing green.

If a device is not detected, click the **Scan for available adapters** button.

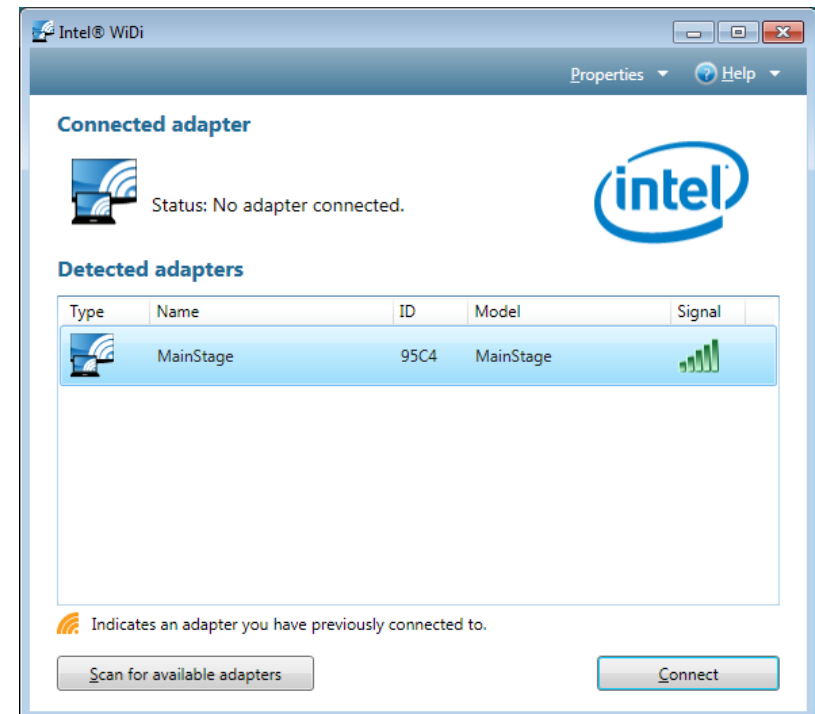
Type: Previously used connections will show an orange circle on the TV icon. A grey circle indicates a new device.

Name: Displays the name of the adapter. You can rename the adapter during or after setup.

ID: Displays the ID of the adapter.

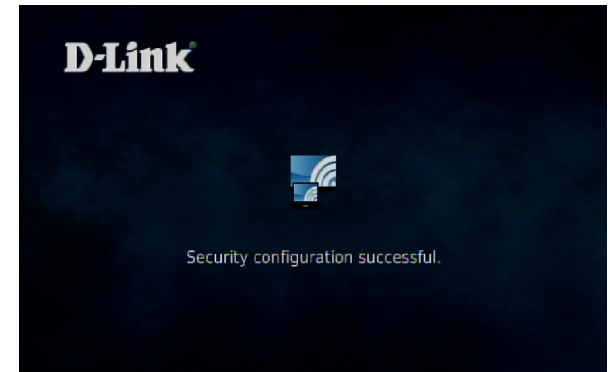
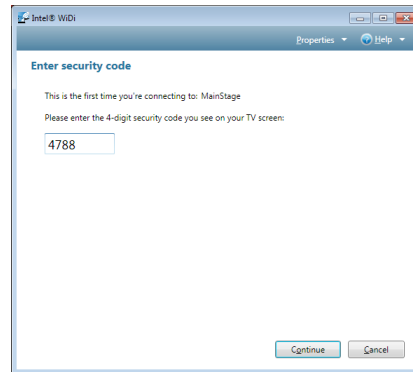
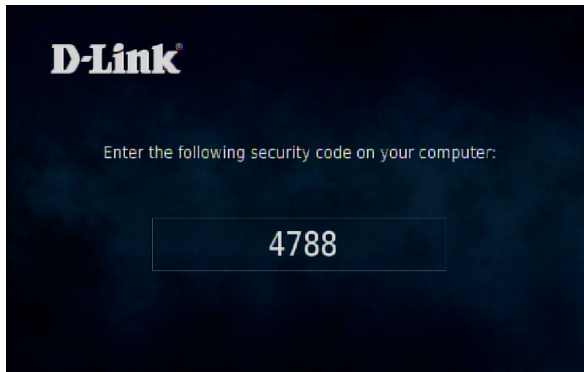
Model: Displays the model of the WiDi adapter.

Signal: Displays the signal strength on a scale of 1 bar (weakest) to 5 bars (strongest).



Step 7

If you are connecting the laptop to the MainStage™ TV adapter for the first time, it will display a 4-digit security code on the TV. Enter this 4-digit security code into the Intel® Wireless Display software.

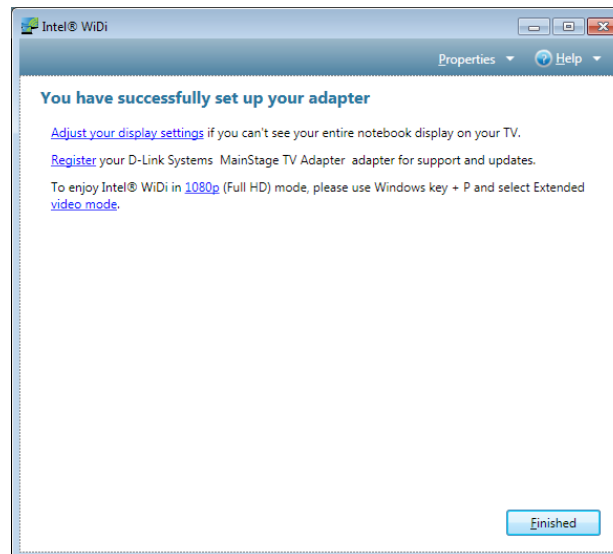


Step 8

The TV screen will display your laptop screen and the LED on the MainStage™ TV adapter will turn solid green.

Step 9

The following window will appear. Click **Finished** to complete setup. Your device is now ready to use.



WiDi Settings

When you are connected to an adapter, you may click the Properties menu to configure your WiDi adapter's settings.

Behavior Properties

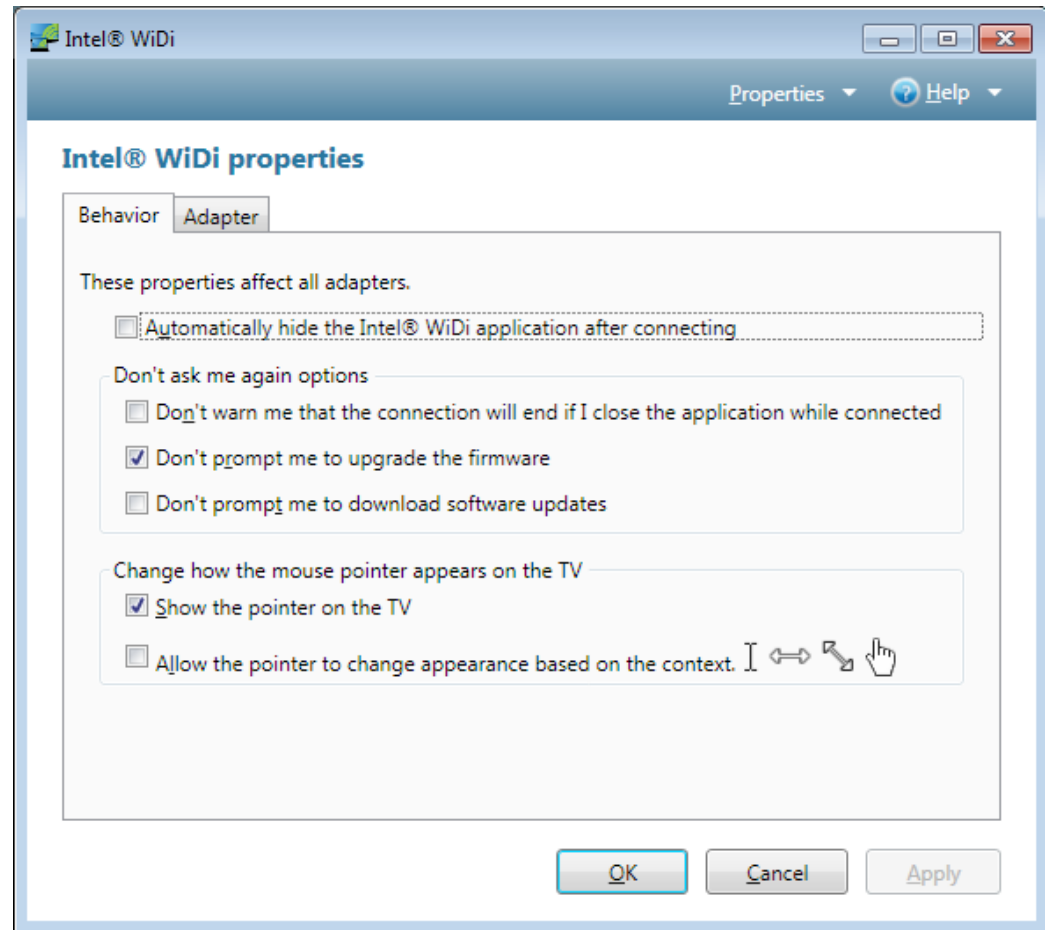
Automatically hide the Intel WiDi application after connecting: Click this box to hide the WiDi software after connecting to the MainStage™ TV adapter.

Don't ask me again options: Check the boxes of the options you want to disable.

Note: The 'upgrade the firmware' option refers to the firmware on the MainStage™ TV adapter. The 'download software updates' option refers to the Intel® WiDi software on your laptop.

Change how the mouse pointer appears on the TV: Check the boxes of the mouse pointer behaviors you want enabled.

OK: Click to save your settings.



Adapter Properties

Adapter Name: Enter a name for the MainStage™ TV adapter.

Network address: Displays the IP address of the MainStage™ TV adapter. The IP address cannot be changed.

Adapter ID: Displays the adapter ID.

Adapter manufacturer: Displays the MainStage™ TV adapter's manufacturer (D-Link).

Adapter model: Displays the model number of the MainStage™ TV adapter.

Adapter hardware version: Displays the hardware version of the adapter.

Adapter firmware version: Displays the firmware version currently on the MainStage™ TV adapter.

If there is new firmware available, the **Update available** button will appear (as seen in the image to the right). Click the button to begin the update process. Once the update begins, the TV screen will display an Updating Adapter message. After the update is complete, the adapter automatically disconnects from the laptop. Re-scan and connect to the adapter.

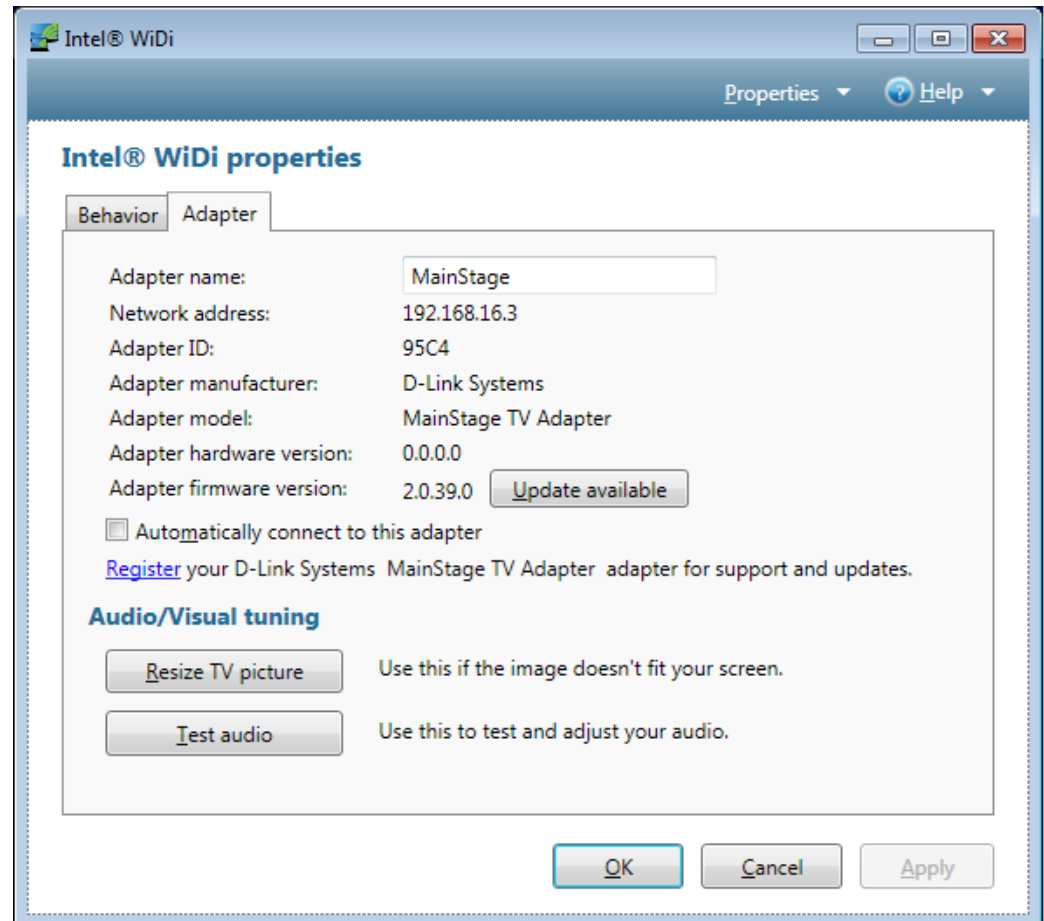
Automatically connect to this adapter: Check this box to automatically have your laptop connect to the MainStage™ TV adapter when you launch the Intel WiDi software.

Register: Click Register to open the D-Link registration website and enter your information.

Resize TV picture: Click to adjust the image on your TV (refer to page 9).

Test audio: Click to test and adjust your audio settings (refer to page 10).

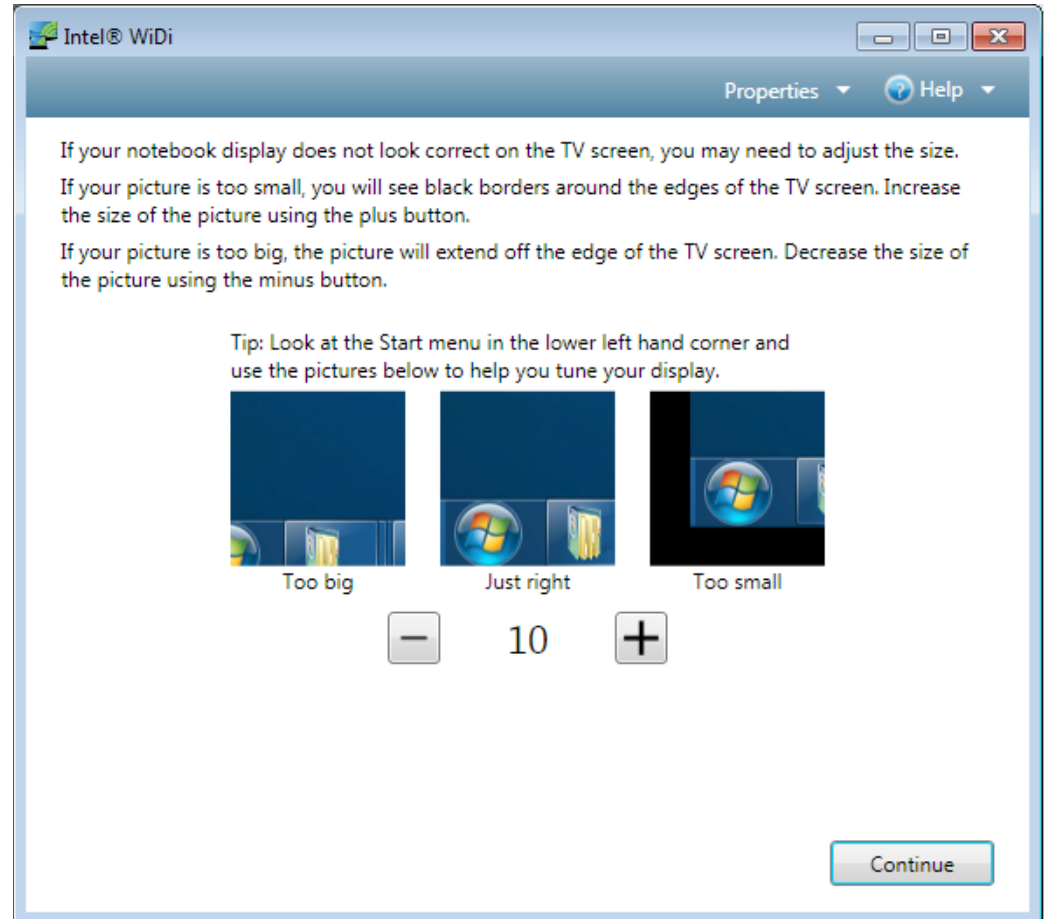
OK: Click to save your settings.



Resize TV Picture

If your display does not look correct on your TV, you can adjust the size here. Click the - button to decrease the size and click the + button to increase the size.

Click **Continue** to save your settings.

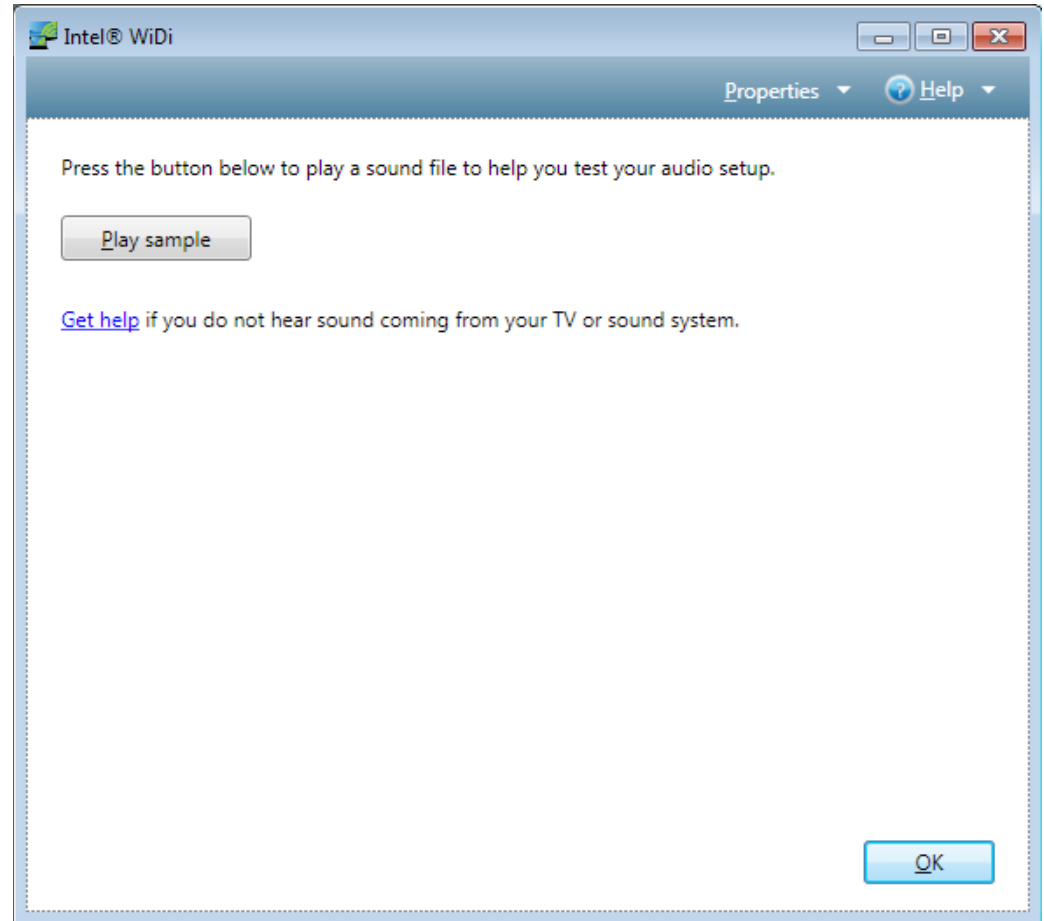


Test Audio

Once you connect to the MainStage™ TV adapter, the sound on your laptop should mute. On some occasions, an application may enable the sound on your laptop. To turn the laptop's audio off, click the speaker icon in the system tray (lower-right corner). You can either slide the volume all the way down or click the speaker icon to mute.

Click the **Play Sample** button to hear an audio file. You can then adjust your TV or audio system settings. If you do not hear any sound, click **Get Help** for troubleshooting steps.

Click **OK** to save your settings.



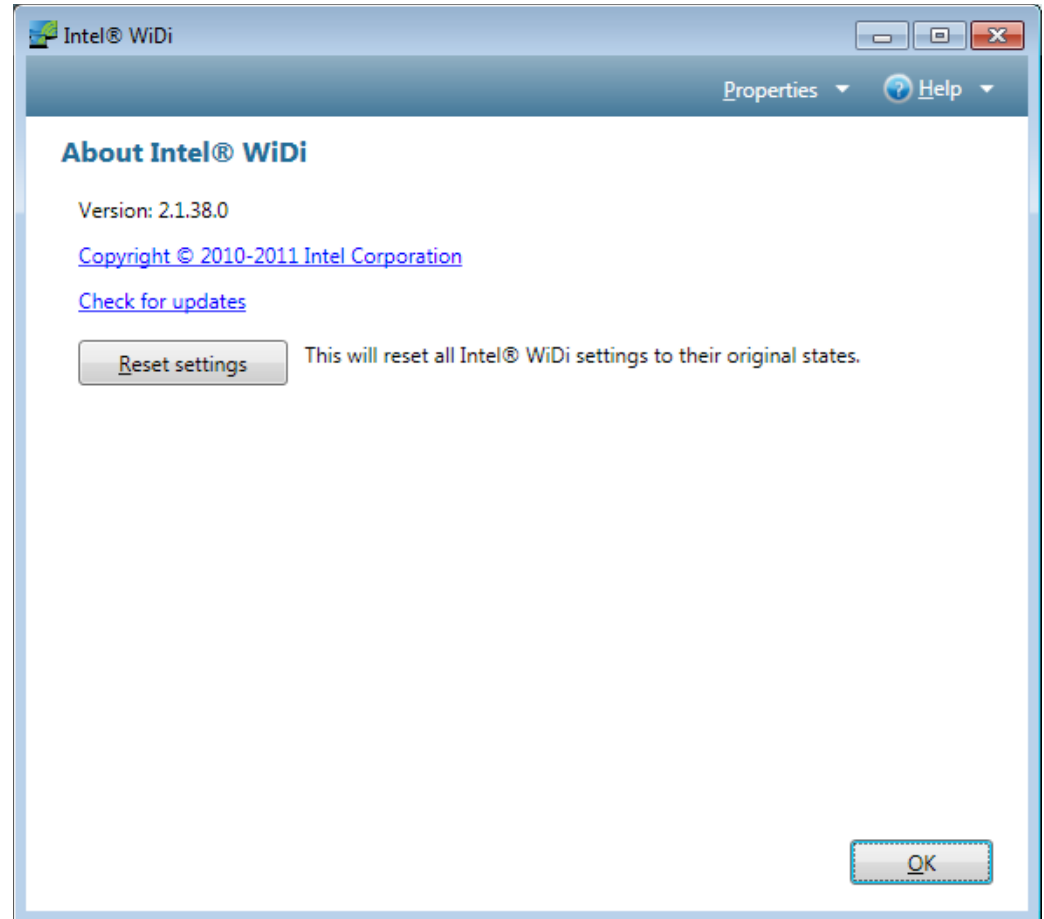
About

The About screen will display the current version of your Intel® WiDi software.

Click **OK** to close the window.

If you are having some issues or accidentally changed a setting you shouldn't have, you can reset the application back to the default settings. To reset, click **Help** and then click **About**. Click the **Reset Settings** button.

When you restart the WiDi display, all detected adapters will be displayed as not previously connected. You will not need to re-enter the security code since that information is stored in the MainStage™ TV adapter.



Help/Troubleshooting

For support/information regarding your Intel® WiDi software, visit <http://www.intel.com/go/wirelessdisplayupdate>.

Click **Help** for FAQs and solutions to many questions you may have with the WiDi software. Below are a few common questions:

Why is my Laptop and TV displaying different images?

If you are connected, but the image is different, the laptop's firewall may be blocking the connection.

Why is the color on your laptop look different than on my TV?

On occasion the color on your TV screen and your laptop may look different. Try changing the color settings on your TV to match the colors on your laptop. Refer to your TV manual for more information.

Why am I getting an 'Incorrect Security Code Entered' message?

If you receive a message saying the security code is not correct, make sure to type the code exactly as shown on your TV. The security code number will change after an incorrect entry. If the connection fails right after a correct security code is entered, reconnect and type in the security code.

What do I do if no adapters are detected?

Click the **Scan for available adapters** button. If you continue to not detect the MainStage™ TV adapter, make sure the adapter is on and the TV is displaying the Get Started screen. Also, try moving the laptop or the adapter to a different location. The adapter and TV should be in the same room to work correctly.

How do I reset the Intel WiDi software to the default settings?

If you are having some issues or accidentally changed a setting you shouldn't have, you can reset the application back to the default settings. To reset, click **Help** and then click **About**. Click the **Reset Settings** button. When you restart the WiDi display, all detected adapters will be displayed as not previously connected. You will not need to re-enter the security code since that information is stored in the MainStage™ TV adapter.

When I close the laptop cover/lid the connection drops. How do I continue connectivity to my WiDi adapter with my laptop closed?

Closing the cover of the laptop may go into sleep mode or turn the laptop off, and as a result, will disconnect the Intel Wireless Display session.

To close the cover and continue using the WiDi application, you must access your power options:

1. Click **Start** > **Control Panel** > **Hardware and Sound** (if in Category mode) > **Power Options**. You may also click the battery icon in the taskbar.
2. Click the **Change what closing the lid does** on the left side.
3. Next to *When I close the lid*, select **Do nothing** from the drop-down menu for both *On battery* and *Plugged in*.
4. Click the **Save changes** button to activate your settings.

How do I change the language display on my MainStage™ TV adapter?

Once you are connected and the D-Link WiDi adapter is displayed on your TV, you can change the language display. With a paper clip, press the reset button on the back of the WiDi adapter for about 1/2 second to cycle forward. Press and hold for more than 1 second (less than 5 seconds) to cycle back. Below are the available languages:

English (default), Arabic, Czech, Danish, Dutch, Finnish, French, German, Greek, Hebrew, Hungarian, Italian, Japanese, Korean, Norwegian, Polish, Portuguese (Brazil), Portuguese (Portugal), Russian, Simplified Chinese, Spanish, Swedish, Thai, Traditional Chinese, and Turkish.

How do I auto-connect to my MainStage™ TV adapter when I start the Intel® WiDi software?

Once you have successfully connected to your MainStage™ TV adapter, you can set your Intel® WiDi software to automatically connect to the adapter when started. There are two ways to auto-connect to your adapter:

1. In the list of detected WiDi adapters, right-click the MainStage™ TV adapter and select **Auto-connect**. Make sure there is a check mark next to it to verify that it is active.
2. Once you are connected to the MainStage™ TV adapter, click **Properties** and then click **Adapter**. Check the **Automatically connect to this adapter** box. Refer to page 8.

How do I view video at 1080p HDTV resolution?

You must have an 1080p HDTV (using the HDMI connection to the WiDi adapter) and a 2nd generation WiDi laptop (based on Intel's Huron River platform) with 1920 x 1080 screen in **Clone** mode or **Extend** mode.

To view DVD or Blu-Ray discs you must have Firmware version 2.1.11.0 or higher on the MainStage™ TV adapter (refer to the Adapter Settings section).

Technical Specifications

LEDs

- Power/Connectivity

Video Output

- 1080p @ 30 FPS using H.264 compression
- HDMI Output
- Composite Video Output

Audio Output

- Stereo, 5.1 Surround
- HDMI out
- S/PDIF out
- Analog audio (RCA L/R)

Wireless Connectivity

- 802.11a
- 802.11n (2.4GHz/5GHz)
- 802.11g

Power Consumption

- 12V / 1.25A

Operating Temperature

- 32° to 104 °F (0° to 40° C)

Storage Temperature

- -4° to 158° F (-20° to 60°C)

Storage Humidity

- 0 - 80% RH non-condensing

Certifications

- FCC
- CE
- C-Tick
- RoHS
- WEEE
- HDMI

Dimensions

- 6.4" x 4.8" x 1.2" (162.56mm x 121.92mm x 30.48mm)

Weight

- 0.5 lbs (226.8 grams)

Warranty

- 1-Year Warranty

* Maximum wireless signal rate derived from IEEE Standard 802.11a, 802.11g and 802.11n specifications. Actual data throughput will vary. Network conditions and environmental factors, including volume of network traffic, building materials and construction, and network overhead, lower actual data throughput rate. Environmental factors will adversely affect wireless signal range.

Contacting Technical Support

U.S. and Canadian customers can contact D-Link technical support through our web site or by phone.

Before you contact technical support, please have the following ready:

- Model number of the product (e.g. DHD-131)
- Hardware Revision (located on the label on the bottom of the router (e.g. rev A1))
- Serial Number (s/n number located on the label on the bottom of the router).

You can find user documentation on the D-Link website as well as frequently asked questions and answers to technical issues.

For customers within the United States:

Phone Support:

(877) 453-5465

Internet Support:

<http://support.dlink.com>

For customers within Canada:

Phone Support:

(800) 361-5265

Internet Support:

<http://support.dlink.ca>

Warranty

Subject to the terms and conditions set forth herein, D-Link Systems, Inc. ("D-Link") provides this Limited Warranty:

- Only to the person or entity that originally purchased the product from D-Link or its authorized reseller or distributor, and
- Only for products purchased and delivered within the fifty states of the United States, the District of Columbia, U.S. Possessions or Protectorates, U.S. Military Installations, or addresses with an APO or FPO.

Limited Warranty:

D-Link warrants that the hardware portion of the D-Link product described below ("Hardware") will be free from material defects in workmanship and materials under normal use from the date of original retail purchase of the product, for the period set forth below ("Warranty Period"), except as otherwise stated herein.

- Hardware: One (1) year
- Spare parts and spare kits: Ninety (90) days

The customer's sole and exclusive remedy and the entire liability of D-Link and its suppliers under this Limited Warranty will be, at D-Link's option, to repair or replace the defective Hardware during the Warranty Period at no charge to the original owner or to refund the actual purchase price paid. Any repair or replacement will be rendered by D-Link at an Authorized D-Link Service Office. The replacement hardware need not be new or have an identical make, model or part. D-Link may, at its option, replace the defective Hardware or any part thereof with any reconditioned product that D-Link reasonably determines is substantially equivalent (or superior) in all material respects to the defective Hardware. Repaired or replacement hardware will be warranted for the remainder of the original Warranty Period or ninety (90) days, whichever is longer, and is subject to the same limitations and exclusions. If a material defect is incapable of correction, or if D-Link determines that it is not practical to repair or replace the defective Hardware, the actual price paid by the original purchaser for the defective Hardware will be refunded by D-Link upon return to D-Link of the defective Hardware. All Hardware or part thereof that is replaced by D-Link, or for which the purchase price is refunded, shall become the property of D-Link upon replacement or refund.

Limited Software Warranty:

D-Link warrants that the software portion of the product ("Software") will substantially conform to D-Link's then current functional specifications for the Software, as set forth in the applicable documentation, from the date of original retail purchase of the Software for a period of ninety (90) days ("Software Warranty Period"), provided that the Software is properly installed on approved hardware and operated as contemplated in its documentation. D-Link further warrants that, during the Software Warranty Period, the magnetic media on which D-Link delivers the Software will be free of physical defects. The customer's sole and exclusive remedy and the entire liability of D-Link and its suppliers under this Limited Warranty will be, at D-Link's option, to replace the non-conforming Software (or defective media) with software that substantially conforms to D-Link's functional specifications for the Software or to refund the portion of the actual purchase price paid that is attributable to the Software.

Except as otherwise agreed by D-Link in writing, the replacement Software is provided only to the original licensee, and is subject to the terms and conditions of the license granted by D-Link for the Software. Replacement Software will be warranted for the remainder of the original Warranty Period and is subject to the same limitations and exclusions. If a material non-conformance is incapable of correction, or if D-Link determines in its sole discretion that it is not practical to replace the non-conforming Software, the price paid by the original licensee for the non-conforming Software will be refunded by D-Link; provided that the non-conforming Software (and all copies thereof) is first returned to D-Link. The license granted respecting any Software for which a refund is given automatically terminates.

Non-Applicability of Warranty:

The Limited Warranty provided hereunder for Hardware and Software portions of D-Link's products will not be applied to and does not cover any refurbished product and any product purchased through the inventory clearance or liquidation sale or other sales in which D-Link, the sellers, or the liquidators expressly disclaim their warranty obligation pertaining to the product and in that case, the product is being sold "As-Is" without any warranty whatsoever including, without limitation, the Limited Warranty as described herein, notwithstanding anything stated herein to the contrary.

Submitting A Claim:

The customer shall return the product to the original purchase point based on its return policy. In case the return policy period has expired and the product is within warranty, the customer shall submit a claim to D-Link as outlined below:

- The customer must submit with the product as part of the claim a written description of the Hardware defect or Software nonconformance in sufficient detail to allow D-Link to confirm the same, along with proof of purchase of the product (such as a copy of the dated purchase invoice for the product) if the product is not registered.
- The customer must obtain a Case ID Number from D-Link Technical Support (USA 1-877-453-5465 or Canada 1-800-361-5265), who will attempt to assist the customer in resolving any suspected defects with the product. If the product is considered defective, the customer must obtain a Return Material Authorization ("RMA") number by completing the RMA form. Enter the assigned Case ID Number at <https://rma.dlink.com/> (USA only) or <https://rma.dlink.ca> (Canada only).
- After an RMA number is issued, the defective product must be packaged securely in the original or other suitable shipping package to ensure that it will not be damaged in transit, and the RMA number must be prominently marked on the outside of the package. Do not include any manuals or accessories in the shipping package. D-Link will only replace the defective portion of the product and will not ship back any accessories.
- The customer is responsible for all in-bound shipping charges to D-Link. No Cash on Delivery ("COD") is allowed. Products sent COD will either be rejected by D-Link or become the property of D-Link. Products shall be fully insured by the customer and shipped to D-Link Systems, Inc.

- **USA residents** send to 17595 Mt. Herrmann, Fountain Valley, CA 92708. D-Link will not be held responsible for any packages that are lost in transit to D-Link. The repaired or replaced packages will be shipped to the customer via UPS Ground or any common carrier selected by D-Link. Return shipping charges shall be prepaid by D-Link if you use an address in the United States, otherwise we will ship the product to you freight collect. Expedited shipping is available upon request and provided shipping charges are prepaid by the customer. D-Link may reject or return any product that is not packaged and shipped in strict compliance with the foregoing requirements, or for which an RMA number is not visible from the outside of the package. The product owner agrees to pay D-Link's reasonable handling and return shipping charges for any product that is not packaged and shipped in accordance with the foregoing requirements, or that is determined by D-Link not to be defective or non-conforming.
- **Canadian residents** send to D-Link Networks, Inc., 2525 Meadowvale Boulevard Mississauga, Ontario, L5N 5S2 Canada. D-Link will not be held responsible for any packages that are lost in transit to D-Link. The repaired or replaced packages will be shipped to the customer via Purolator Canada or any common carrier selected by D-Link. Return shipping charges shall be prepaid by D-Link if you use an address in Canada, otherwise we will ship the product to you freight collect. Expedited shipping is available upon request and provided shipping charges are prepaid by the customer. D-Link may reject or return any product that is not packaged and shipped in strict compliance with the foregoing requirements, or for which an RMA number is not visible from the outside of the package. The product owner agrees to pay D-Link's reasonable handling and return shipping charges for any product that is not packaged and shipped in accordance with the foregoing requirements, or that is determined by D-Link not to be defective or non-conforming. RMA phone number: 1-800-361-5265 Hours of Operation: Monday-Friday, 9:00AM – 9:00PM EST

What Is Not Covered:

The Limited Warranty provided herein by D-Link does not cover:

Products that, in D-Link's judgment, have been subjected to abuse, accident, alteration, modification, tampering, negligence, misuse, faulty installation, lack of reasonable care, repair or service in any way that is not contemplated in the documentation for the product, or if the model or serial number has been altered, tampered with, defaced or removed; Initial installation, installation and removal of the product for repair, and shipping costs; Operational adjustments covered in the operating manual for the product, and normal maintenance; Damage that occurs in shipment, due to act of God, failures due to power surge, and cosmetic damage; Any hardware, software, firmware or other products or services provided by anyone other than D-Link; and Products that have been purchased from inventory clearance or liquidation sales or other sales in which D-Link, the sellers, or the liquidators expressly disclaim their warranty obligation pertaining to the product.

While necessary maintenance or repairs on your Product can be performed by any company, we recommend that you use only an Authorized D-Link Service Office. Improper or incorrectly performed maintenance or repair voids this Limited Warranty.

Disclaimer of Other Warranties:

EXCEPT FOR THE LIMITED WARRANTY SPECIFIED HEREIN, THE PRODUCT IS PROVIDED "AS-IS" WITHOUT ANY WARRANTY OF ANY KIND WHATSOEVER INCLUDING, WITHOUT LIMITATION, ANY WARRANTY OF MERCHANTABILITY, FITNESS FOR A PARTICULAR PURPOSE AND NON-INFRINGEMENT.

IF ANY IMPLIED WARRANTY CANNOT BE DISCLAIMED IN ANY TERRITORY WHERE A PRODUCT IS SOLD, THE DURATION OF SUCH IMPLIED WARRANTY SHALL BE LIMITED TO THE DURATION OF THE APPLICABLE WARRANTY PERIOD SET FORTH ABOVE. EXCEPT AS EXPRESSLY COVERED UNDER THE LIMITED WARRANTY PROVIDED HEREIN, THE ENTIRE RISK AS TO THE QUALITY, SELECTION AND PERFORMANCE OF THE PRODUCT IS WITH THE PURCHASER OF THE PRODUCT.

Limitation of Liability:

TO THE MAXIMUM EXTENT PERMITTED BY LAW, D-LINK IS NOT LIABLE UNDER ANY CONTRACT, NEGLIGENCE, STRICT LIABILITY OR OTHER LEGAL OR EQUITABLE THEORY FOR ANY LOSS OF USE OF THE PRODUCT, INCONVENIENCE OR DAMAGES OF ANY CHARACTER, WHETHER DIRECT, SPECIAL, INCIDENTAL OR CONSEQUENTIAL (INCLUDING, BUT NOT LIMITED TO, DAMAGES FOR LOSS OF GOODWILL, LOSS OF REVENUE OR PROFIT, WORK STOPPAGE, COMPUTER FAILURE OR MALFUNCTION, FAILURE OF OTHER EQUIPMENT OR COMPUTER PROGRAMS TO WHICH D-LINK'S PRODUCT IS CONNECTED WITH, LOSS OF INFORMATION OR DATA CONTAINED IN, STORED ON, OR INTEGRATED WITH ANY PRODUCT RETURNED TO D-LINK FOR WARRANTY SERVICE) RESULTING FROM THE USE OF THE PRODUCT, RELATING TO WARRANTY SERVICE, OR ARISING OUT OF ANY BREACH OF THIS LIMITED WARRANTY, EVEN IF D-LINK HAS BEEN ADVISED OF THE POSSIBILITY OF SUCH DAMAGES. THE SOLE REMEDY FOR A BREACH OF THE FOREGOING LIMITED WARRANTY IS REPAIR, REPLACEMENT OR REFUND OF THE DEFECTIVE OR NONCONFORMING PRODUCT. THE MAXIMUM LIABILITY OF D-LINK UNDER THIS WARRANTY IS LIMITED TO THE PURCHASE PRICE OF THE PRODUCT COVERED BY THE WARRANTY. THE FOREGOING EXPRESS WRITTEN WARRANTIES AND REMEDIES ARE EXCLUSIVE AND ARE IN LIEU OF ANY OTHER WARRANTIES OR REMEDIES, EXPRESS, IMPLIED OR STATUTORY.

Governing Law:

This Limited Warranty shall be governed by the laws of the State of California. Some states do not allow exclusion or limitation of incidental or consequential damages, or limitations on how long an implied warranty lasts, so the foregoing limitations and exclusions may not apply. This Limited Warranty provides specific legal rights and you may also have other rights which vary from state to state.

Trademarks:

D-Link is a registered trademark of D-Link Corporation/D-Link Systems, Inc. Other trademarks or registered trademarks are the property of their respective owners.

Copyright Statement:

No part of this publication or documentation accompanying this product may be reproduced in any form or by any means or used to make any derivative such as translation, transformation, or adaptation without permission from D-Link Corporation/D-Link Systems, Inc., as stipulated by the United States Copyright Act of 1976 and any amendments thereto. Contents are subject to change without prior notice.

Copyright ©2011 by D-Link Corporation/D-Link Systems, Inc. All rights reserved.

CE Mark Warning:

This is a Class B product. In a domestic environment, this product may cause radio interference, in which case the user may be required to take adequate measures.

FCC Statement:

This equipment has been tested and found to comply with the limits for a Class B digital device, pursuant to part 15 of the FCC Rules. These limits are designed to provide reasonable protection against harmful interference in a residential installation. This equipment generates, uses, and can radiate radio frequency energy and, if not installed and used in accordance with the instructions, may cause harmful interference to radio communication. However, there is no guarantee that interference will not occur in a particular installation. If this equipment does cause harmful interference to radio or television reception, which can be determined by turning the equipment off and on, the user is encouraged to try to correct the interference by one or more of the following measures:

- Reorient or relocate the receiving antenna.
- Increase the separation between the equipment and receiver.
- Connect the equipment into an outlet on a circuit different from that to which the receiver is connected.
- Consult the dealer or an experienced radio/TV technician for help.

FCC Caution:

Any changes or modifications not expressly approved by the party responsible for compliance could void the user's authority to operate this equipment.

This device complies with Part 15 of the FCC Rules. Operation is subject to the following two conditions:

- (1) This device may not cause harmful interference, and
- (2) this device must accept any interference received, including interference that may cause undesired operation.

IMPORTANT NOTICE:

FCC Radiation Exposure Statement:

This equipment complies with FCC radiation exposure limits set forth for an uncontrolled environment. This equipment should be installed and operated with minimum distance 20cm between the radiator & your body. This transmitter must not be co-located or operating in conjunction with any other antenna or transmitter.

The availability of some specific channels and/or operational frequency bands are country dependent and are firmware programmed at the factory to match the intended destination. The firmware setting is not accessible by the end user.

Industry Canada Statement:

This device complies with RSS-210 of the Industry Canada Rules. Operation is subject to the following two conditions:

- (1) This device may not cause harmful interference, and
- (2) this device must accept any interference received, including interference that may cause undesired operation.

IMPORTANT NOTE:

Radiation Exposure Statement:

This equipment complies with IC radiation exposure limits set forth for an uncontrolled environment. This equipment should be installed and operated with minimum distance 20cm between the radiator & your body.

Ce dispositif est conforme à la norme CNR-210 d'Industrie Canada applicable aux appareils radio exempts de licence. Son fonctionnement est sujet aux deux conditions suivantes: (1) le dispositif ne doit pas produire de brouillage préjudiciable, et (2) ce dispositif doit accepter tout brouillage reçu, y compris un brouillage susceptible de provoquer un fonctionnement indésirable.

NOTE IMPORTANTE:

Déclaration d'exposition aux radiations:

Cet équipement est conforme aux limites d'exposition aux rayonnements IC établies pour un environnement non contrôlé. Cet équipement doit être installé et utilisé avec un minimum de 20 cm de distance entre la source de rayonnement et votre corps.

Registration

Register your product online at registration.dlink.com



Product registration is entirely voluntary and failure to complete or return this form will not diminish your warranty rights.

Version 1.0
June 10, 2011