

# Quick Install Guide

## MainStage™ TV Adapter for Intel® Wireless Display



Thank you for purchasing the MainStage™ TV Adapter. Follow the easy steps in this guide to properly set up your device. Please verify that all the package contents listed below are available.

### Package Contents

- DHD-131 MainStage™ TV Adapter for Intel® Wireless Display
- HDMI Cable
- Power Adapter

If any of the above items are missing, please contact your reseller.

### System Requirements

- Laptop featuring Intel® Wireless Display and powered by a 2nd generation Intel® Core™ processor.
- TV with a HDMI or AV Composite input

DHD-131

### Hardware Overview

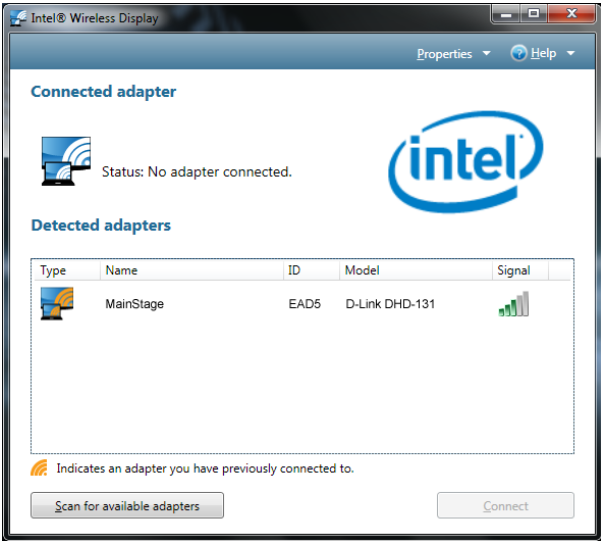


1	Reset Button	4	S/PDIF Digital Audio Port
2	HDMI Port	5	On/Off Button
3	Composite Audio/Video Ports	6	Power Connector

### Installation

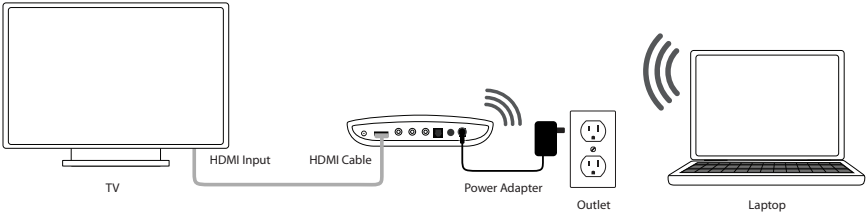
- Step 1**  
Connect the MainStage™ TV adapter to your TV. Use the HDMI connection for the best quality video.
- Step 2**  
Connect the supplied power adapter to the back of the MainStage™ TV adapter and the other end to a power outlet or surge protector. The MainStage™ TV adapter LED is red when it powers up. Then the LED turns yellow to indicate it is ready, but is not yet connected to your computer.
- Step 3**  
Power on your TV and select the correct TV input source. Please refer to your TV documentation for instructions on how to change your input source.

- Step 4**  
The Startup screen displays on your TV within 30 seconds. If this screen does not appear, make sure your TV is set to the correct video input and all the cables are firmly secured.
- Step 5**  
Launch the Intel® Wireless Display software on your laptop. Some laptops may have a button or key, or launch from Windows. Click **Start**, type **Intel® Wireless Display** in the search field and then run the Intel® Wireless Display software.
- Step 6**  
Use the Intel® Wireless Display software to scan and find the MainStage™ TV adapter. The screen below shows that the Intel® Wireless Display software has found the wireless adapter.



- Step 7**  
Double-click the MainStage™ TV adapter listed under Detected Adapters to connect to it. The LED on the TV adapter will start flashing green.
- If you are connecting the laptop to the MainStage™ TV adapter for the first time, it will display a 4-digit security code on the TV. Enter this 4-digit security code into the Intel® Wireless Display software.

- Step 8**  
The TV screen will display your laptop screen and the LED on the MainStage™ TV adapter will turn solid green. Your device is now ready to use.



### Technical Support

Having trouble installing your new product? D-Link’s website contains the latest user documentation and software updates for D-Link products. U.S. and Canadian customers can contact D-Link Technical Support through our website or by phone.

**United States**  
Telephone: (877) 453-5465  
Internet: <http://support.dlink.com>

**Canada**  
Telephone: (800) 361-5265  
Internet: <http://support.dlink.ca>

©2011 D-Link Corporation/D-Link Systems, Inc. All rights reserved. D-Link and the D-Link logo are registered trademarks of D-Link Corporation or its subsidiaries in the United States and/or other countries. Other trademarks or registered trademarks are the property of their respective owners. Product specifications, size and shape are subject to change without notice, and actual product appearance may differ from that depicted on the package. Visit [dlink.com](http://dlink.com) (US) or [dlink.ca](http://dlink.ca) (Canada) for more details.

