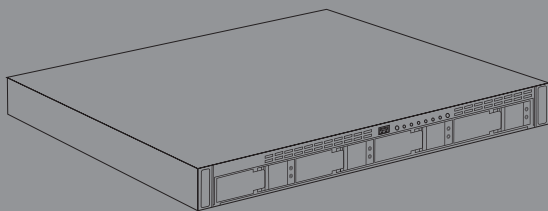




## Quick Installation Guide

### 4-Bay SMB Rack-mount Unified Network Storage Enclosure

This document will guide you through the basic installation process for your new D-Link DNS-1550-04.



**DNS-1550-04**

---

# DNS-1550-04 Quick Install Guide

This installation guide provides basic instructions for installing the DNS-1550-04 on your network. For additional information about how to use the DNS-1550-04, please see the User Manual which is available on the CD included in this package or from the D-Link support website.

## Installation Steps

1. Verify the package contents against the list below
2. Hardware Overview
3. Hardware Installation
4. Configuration with Wizard

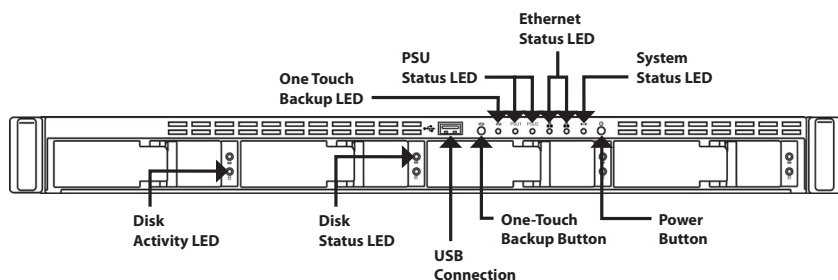
## 1. Package Contents

- D-Link DNS-1550-04
- CD-ROM with Manual and Software
- Quick Installation Guide
- Power Cord
- Ethernet Cable
- Screws for Disk Drive installation

If any of the above items are missing, please contact your reseller.

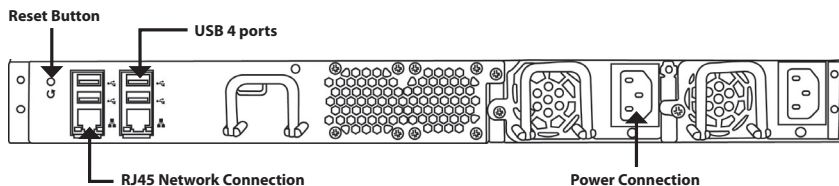
## 2. Hardware Overview

### Front Panel



Item	Function Description
<b>Ethernet Status LED</b>	LED – Orange: Network active in 100 MB/s Green: Network active in 1000 MB/s
<b>Disk Status LED</b>	<ul style="list-style-type: none"><li>• Drive is healthy: green</li><li>• Disk error: red</li><li>• Disk rebuilding: orange</li><li>• Physical drive locate: flashing green</li></ul>
<b>Disk Activity LED</b>	Disk access status
<b>System Status LED</b>	<ul style="list-style-type: none"><li>• Power on: flashing green -&gt; orange -&gt; red</li><li>• System ready: green</li><li>• Disk array degrade: orange</li><li>• Disk array offline/ Enclosure error: red</li></ul>
<b>One-Touch Backup Button</b>	Enable one-touch backup. Flashing green while backup is processing
<b>Power Button</b>	Power on/off the NAS

## Rear Panel



Item	Description
USB Connection	For USB printer and flash drive backup
RJ45 Network Connection	For Ethernet cable connection
Reset Button	Reset system configuration
Power Connection	Redundant power supply

---

## 3. Hardware Installation

Open the shipping carton for the DNS-1550-04 and carefully remove and unwrap its contents.

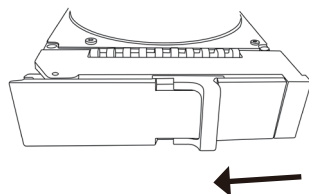
To install DNS-1550-04 on your local network, refer to the steps below:

### 3.1 Installing Disk Drives

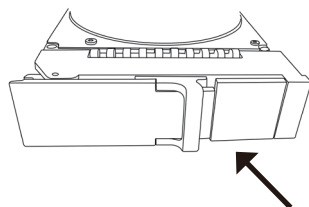
To install disk drives:

1. Remove the disk tray from the device by the following steps:

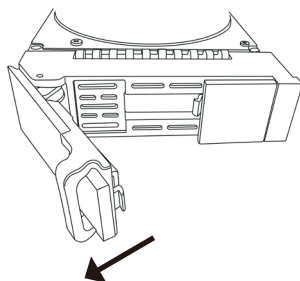
a. Slide the latch towards the left.



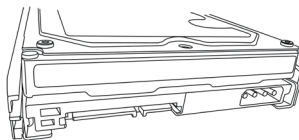
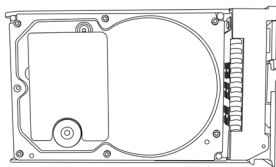
b. Press the button next to the latch.



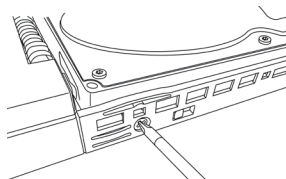
c. Pull the latch to open the disk tray door and then remove the disk tray from the enclosure.



- 
2. Carefully lay the disk drive into the drive tray, so that the screw holes on the sides of the carrier align with the screw holes in the drive.



3. Insert the screws through the holes in the drive carrier and into the sides of the disk drive.
- Install only the counter-sunk screws supplied with the DNS-1550-04.
  - Install four screws per drive.
  - Snug each screw. Be careful not to over-tighten.



4. Reinstall the drive tray into the DNS-1550-04 enclosure.

Tip: Repeat steps 1 through 4 until all of your disk drives are installed.

## 3.2 Connecting the Ethernet Cable

To connect the DNS-1550-04 to your network:

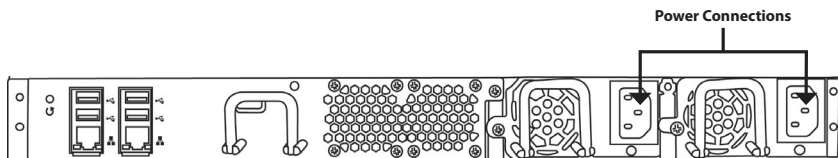
1. Attach one end of the network cable to the RJ45 network connection. (Please refer to Figure of DNS-1550-04 Rear View).
2. Attach the other end of the network cable to your Ethernet hub or switch.

---

## 3.3 Connecting the Power

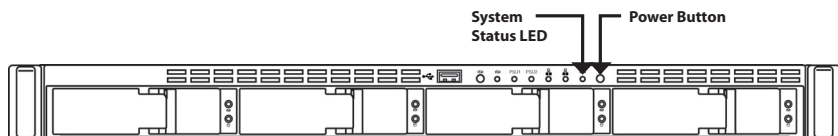
To power on the DNS-1550-04:

1. Attach the power cord on the back of the DNS-1550-04 enclosure and plug the other end into the power source.



2. On the front of the DNS-1550-04, press the power button. It takes about a minute to boot up. When fully booted:

- The System Status LED turns blue.
- The buzzer beeps one time.



To shut down the DNS-1550-04, press and hold the power button until the System status LED indicator turns red then goes dark.

To restart the DNS-1550-04, press the power button again.

---

## 4. Configuration with Wizard

### Quick Setup by Setup Wizard on your Web Browser

The Setup Wizard allows you to configure your disk array(s) quickly and easily. The Wizard will guide you through the required settings step-by-step. You can choose to configure it automatically by using **One-Click Setup**, or manually by using **Advanced Setup**.

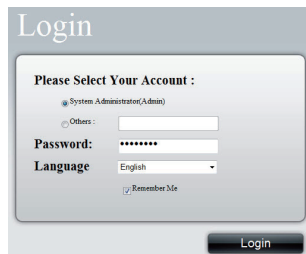
### Connecting to Web-based Configuration Manager

Following steps below to log in Web-based configuration manager :

1. Start your browser (IE7 or above, FireFox 3 or above, Google Chrome 2.0 or above).
2. On the URL address bar, type in the default IP address **http://192.168.0.32**.

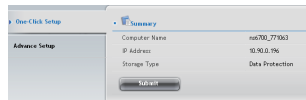
The login screen will appear:

3. Select "Admin" and type the default password "**password**".
4. Select your preferred language by clicking the **Language** menu.



### How to use the One-Click Setup Wizard?

- Click **NAS** tab > **Wizard**.
- Click the One-Click Setup button. The Automatic Configuration box will appear:
- The Summary window displays the general information of the system, including Computer Name, IP Address and Storage Type.



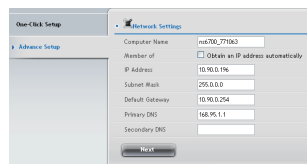


- To accept the proposed configuration, click the **Submit** button. Your DNS-1550-04 setup is complete.

If you like to modify IP address and storage type, click the **Advanced Setup** button to proceed additional configuration setup.

## Using Advanced Setup Wizard

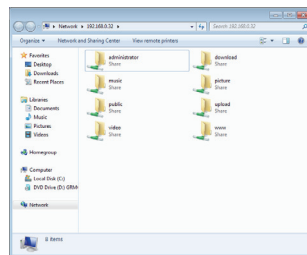
1. Click **NAS** tab > **Wizard**.
2. Click the **Advanced Setup** button. The Advanced Configuration box displays:
3. Complete the required settings in the Network Settings window, click the **Next** button.
4. Select Storage Type: Data Protection (RAID5) or Maximum Capacity (RAID0), and then click the **Next** button.
5. The Summary window displays the general information of the system, including Computer Name, IP Address and Storage Type.



To accept the proposed configuration, click the **Submit** button. Your DNS-1550-04 setup is now complete.

## Connecting Share Folders from Windows

1. Open Explorer and type **\\IP address** (\\192.168.0.32 by default)
2. A login screen will appear, type in your username and password (default username: administrator; password: password).
3. Available share folders are displayed. Double-click the folder icon to access files.



---

# Notes

---

# Notes

# Contacting Technical Support

D-Link's website contains the latest user documentation and software updates for D-Link products. U.S. and Canadian customers can contact D-Link Technical Support through our website or by phone.

Before you contact technical support, please have the following ready:

- Model number of the product (e.g. DNS-1550-04)
- Hardware Revision (located on the label on the bottom of the access point (e.g. rev A1))
- Serial Number (s/n number located on the label on the bottom of the access point).

You can find software updates and user documentation on the D-Link website as well as frequently asked questions and answers to technical issues.

## **United States:**

### **Phone Support:**

(877) 354-6555

### **Internet Support:**

<http://support.dlink.com>

## **Canada**

### **Phone Support:**

(877) 354-6560

### **Internet Support:**

<http://support.dlink.ca>

# **D-Link®**

Version 1.0

July 18, 2011

G6102VA81100002