

1 Download the Driver

If you haven't already downloaded the Windows 2000 Driver for the DMP-100, do so by visiting <http://support.dlink.com>.

2 Extract the Driver

Once downloaded, extract the driver to a folder using Winzip or other ZIP extractor. Save the files to a folder that is easy to get to (i.e.: C:\Temp).

3 Add the Driver to Windows 2000

Open the Control Panel by clicking on **Start, Settings, Control Panel**.

Double-click on the

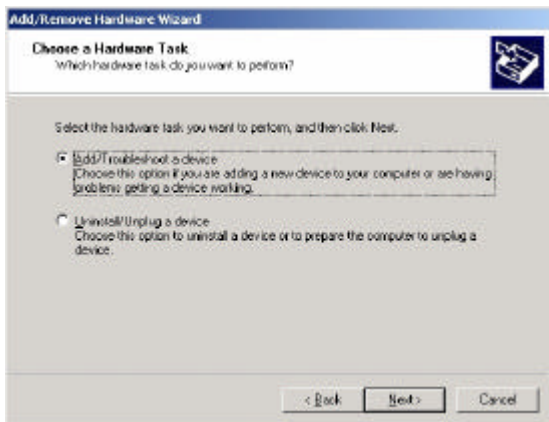
Add/Remove Hardware icon.

When the following screen is displayed, click the **Next** button.

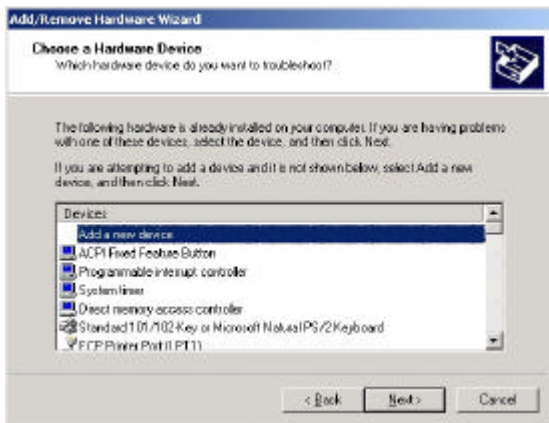


Add the Driver to Windows 2000 *continued...*

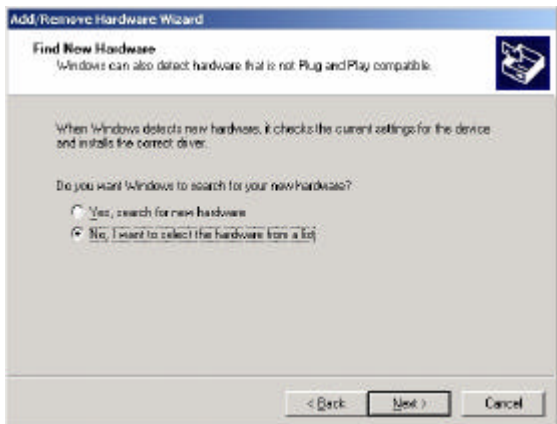
Select “Add/Troubleshoot a device” and click the **Next** button.



Select “Add a new device” and click the **Next** button.

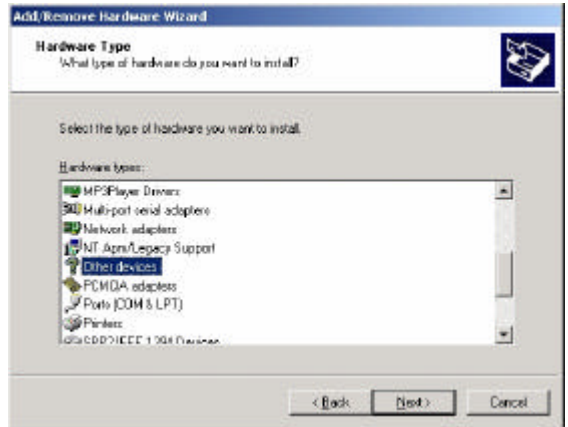


Select “No, I want to select the hardware from a list” and click the **Next** button.

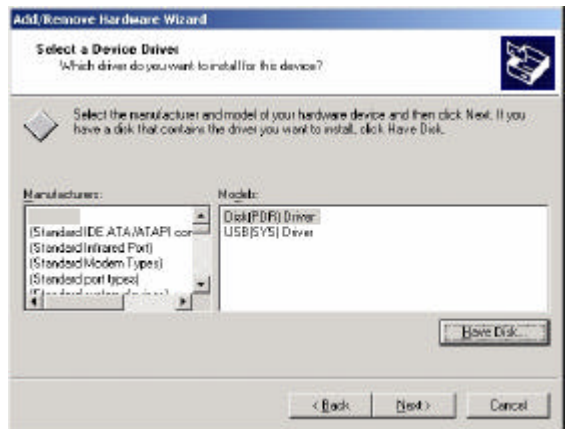


Add the Driver to Windows 2000 *continued...*

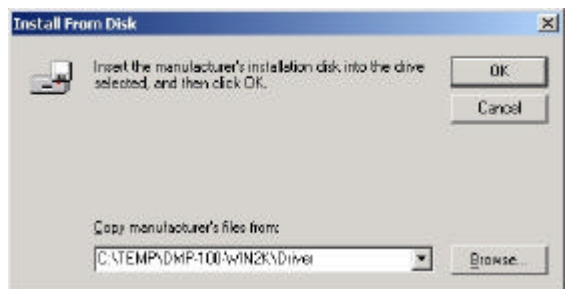
Select “Other devices” and click the **Next** button.



Click the **Have Disk...** button.

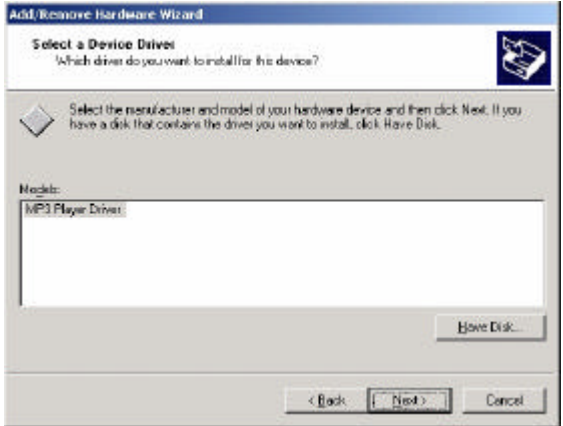


Click the **Browse...** button to select the location of the driver, or manually type the location of the driver in the “Copy manufacturer’s files from:” box. The location should match the location where you extracted the driver files in step 2, with the addition of the “Driver” folder.



Add the Driver to Windows 2000 *continued...*

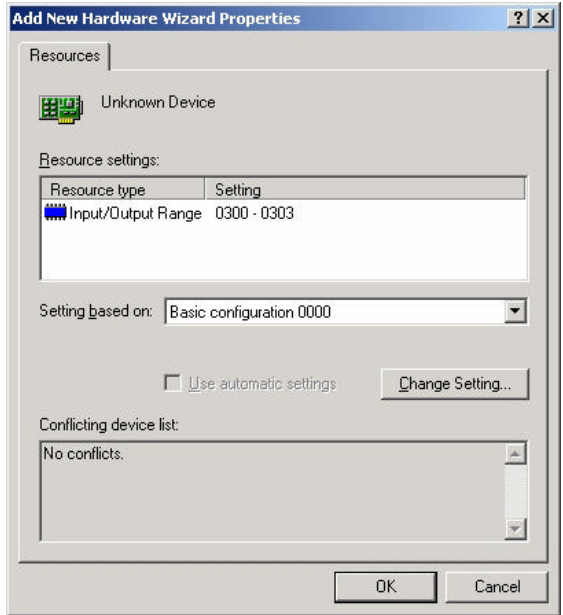
Select “MP3 Player Driver” and click the **Next** button.



Click the **OK** button.

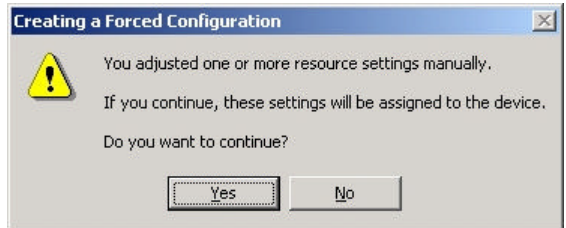


If there are no conflicts in the “Conflicting device list:” then you can click the **OK** button. If devices are listed in the “Conflicting devices list:” then you will need to change the settings so that there are no conflicts by either selecting a different “Basic Configuration” in the “Setting based on:” drop-down box or by clicking the **Change Setting...** button. When there are no conflicting devices, click the **OK** button.

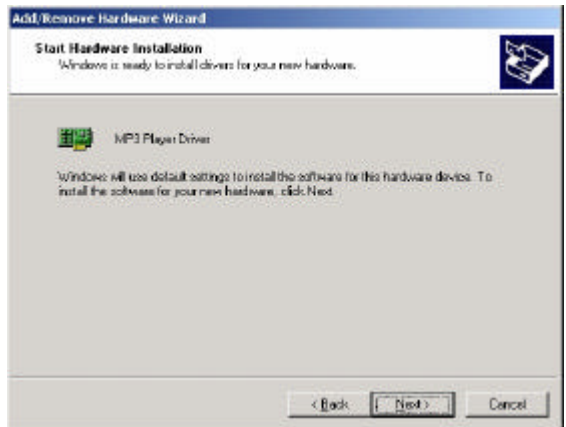


Add the Driver to Windows 2000 *continued...*

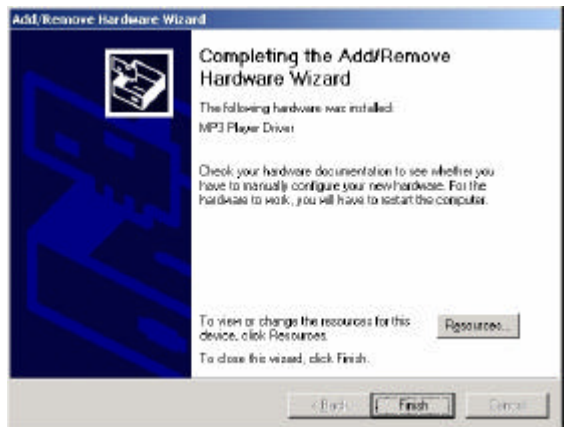
Click the **Yes** button to continue.



Click the **Next** button.

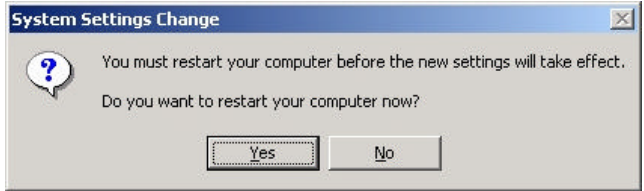


Click the **Finish** button.



Add the Driver to Windows 2000 *continued...*

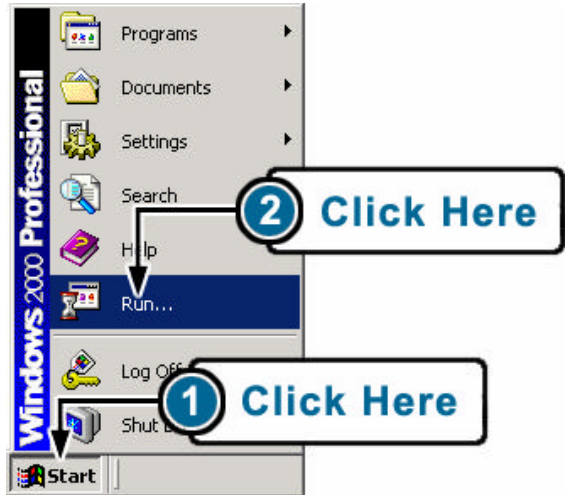
Click the **Yes** button to restart your computer.



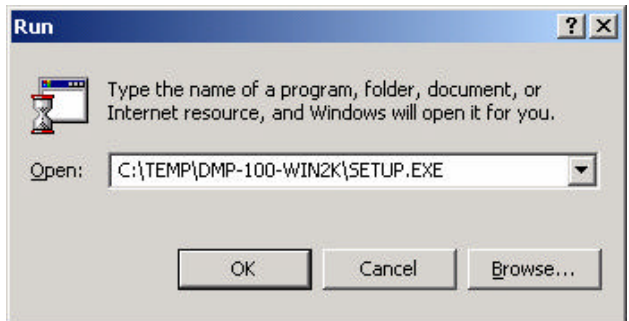
4 Install the Manager Program

After the Driver has been installed, the Manager program must be installed.

Click the **Start** button on the Windows Taskbar, and then click the **Run** button.

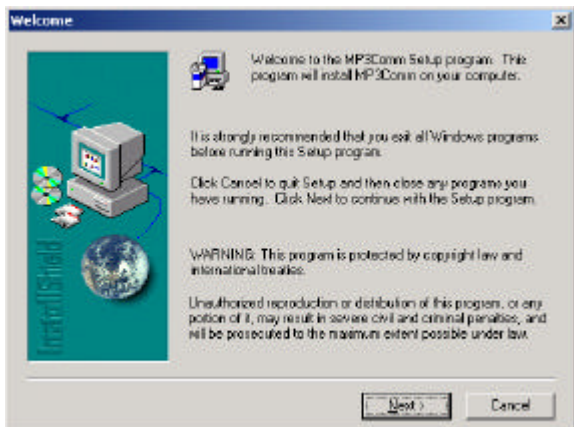


In the Run dialog box, type the location of the **SETUP.EXE** file that you extracted from the ZIP file. You may also browse your hard disk and select the **SETUP.EXE** file from the correct directory.

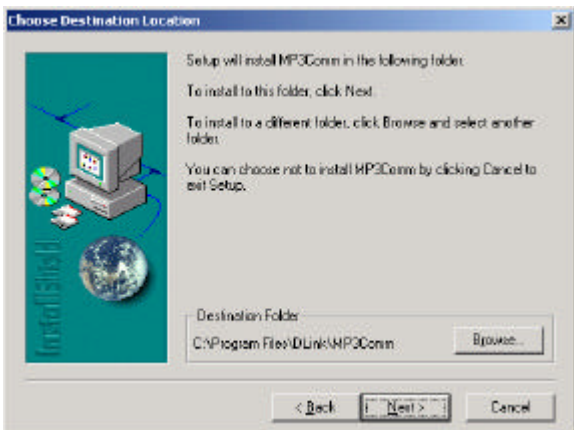


Install the Manager Program *continued...*

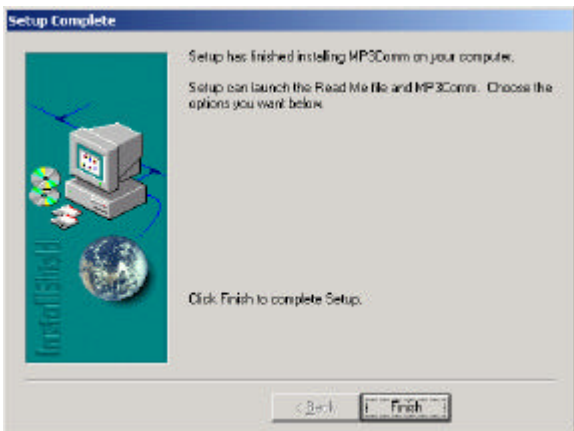
At the “Welcome” screen, click the **Next** button to continue.



Click the **Next** button.



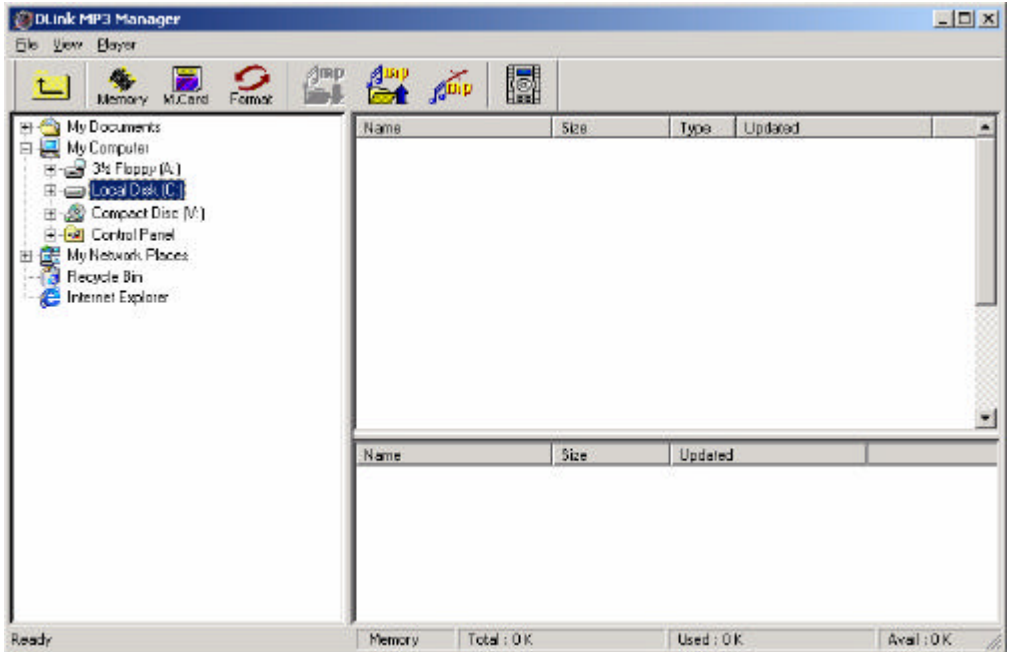
Click the **Finish** button.



5

Running the Manager Program

Run the Manager Program by clicking on the **Start** button. Then click **Programs**, then the icon labeled **D-Link**. There is also a link on the Desktop.



Please refer to the User's Manual for additional information on how to use the Manager Program.

D-Link Technical Support information is listed below if any problems arise during installation.

D-Link Technical Support over Telephone :

(949) 790-5290

6 a.m. to 6 p.m. Monday thru Friday

D-Link Technical Support over the Internet:

www.dlink.com