

Contents of Package:

- DFE-530TX+ Ethernet PCI Adapter
- Printed Quick Installation Guide
- CD with Manual and Drivers

If any of the above items are missing, please contact your reseller.

1

Installing the DFE-530TX+

Before you start, make sure to turn off your computer and unplug the power cord.

Note: To avoid damage caused by static electricity, make sure to properly ground yourself by first touching a metal part of your computer to discharge any static electricity before working with the DFE-530TX+ 10/100 Mb Ethernet PCI Adapter.

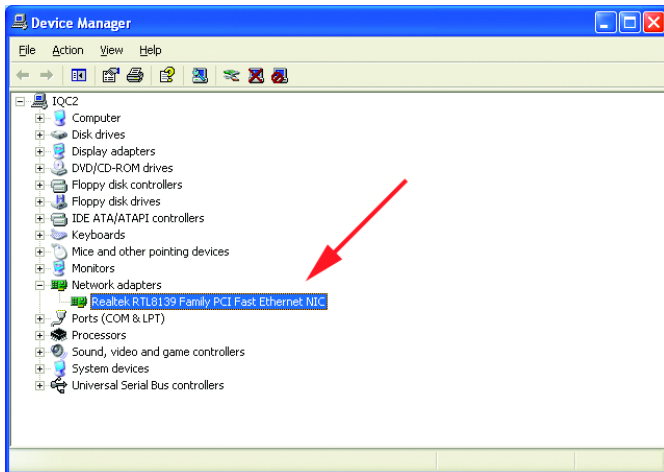


- **Remove** the back cover of the computer.
- **Install** the DFE-530TX+ carefully and firmly into an available PCI slot which is usually “white” or “cream” colored
- **Secure** the DFE-530TX+ with a screw.
- **Replace** the computer’s cover.

2

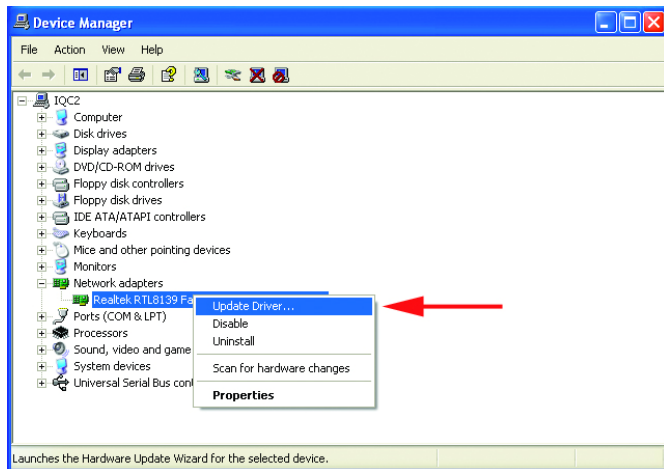
Installing the Drivers

PLUG IN THE POWER CORD AND TURN ON YOUR COMPUTER.



Go to
START>SETTINGS>
CONTROL PANEL>
SYSTEM>HARDWARE
>DEVICE MANAGER.
Scroll down to **“Network
Adapters.”**

For most installations,
Windows XP will
automatically load
“Realtek” drivers as
shown at left.



Right-click on **“Realtek.”**
Click **“Update Driver.”**
The driver installation is
complete.

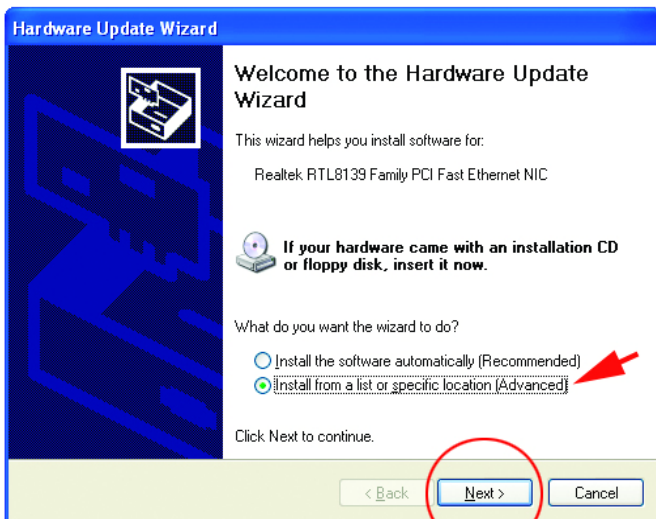
If the **“Realtek”** driver
does not appear under
“Network adapters,” go
to START>CONTROL
PANEL. Switch to
“Classic View.”
Double-click on **“Add
Hardware.”** The
“Hardware Update

Wizard” will appear. Follow the **“Hardware Update Wizard”** to complete the
driver installation. (Please see Step 3.)

3

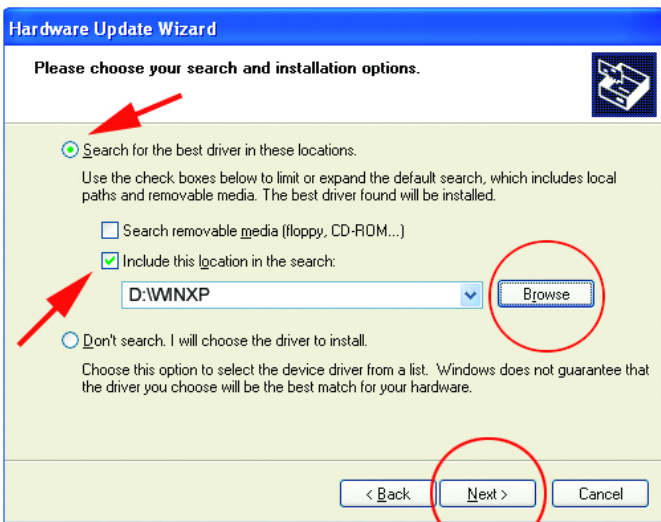
Using the Hardware Update Wizard

INSERT THE DFE-530TX+ DRIVER CD INTO THE CD-ROM DRIVE.



This “Welcome” screen will appear. Select **“Install from a list or specific location.”**

Click “Next.”



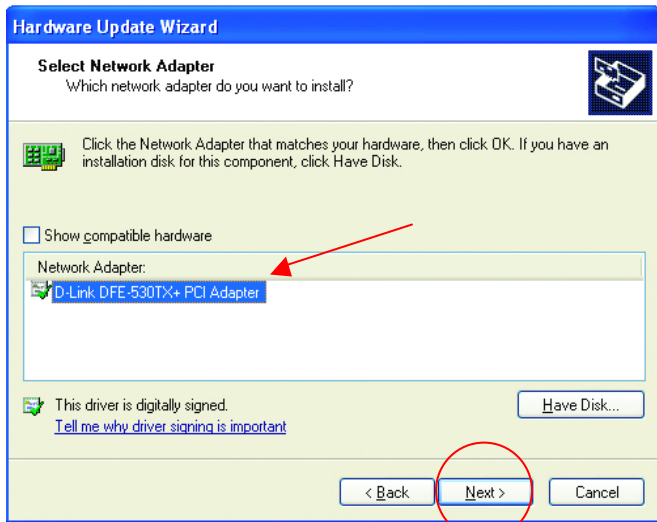
Select “Search for the best drivers in these locations.”

“Browse” for the drivers on the driver CD. (i.e., D:\WINXP, where “D” refers to the CD-ROM drive.)

Click “Next.”

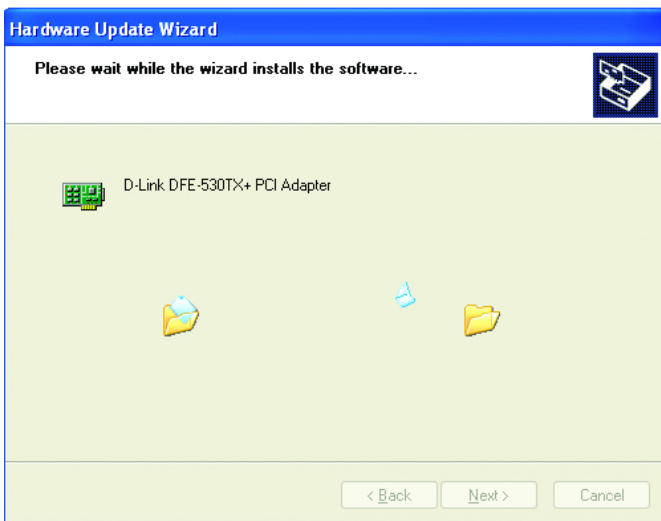
3

Using the Add Hardware Wizard (continued)



Click on “**D-Link DFE-530TX+ PCI Adapter**” as shown.

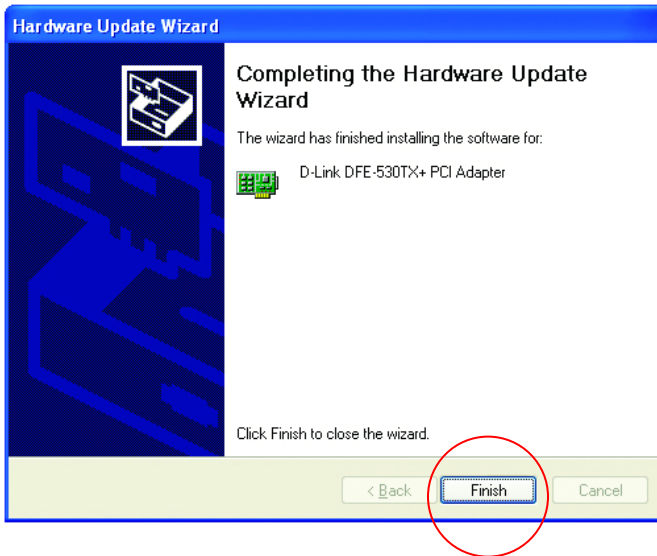
Click “Next.”



Windows XP will load the drivers and required system files.

3

Using the Add Hardware Wizard (continued)

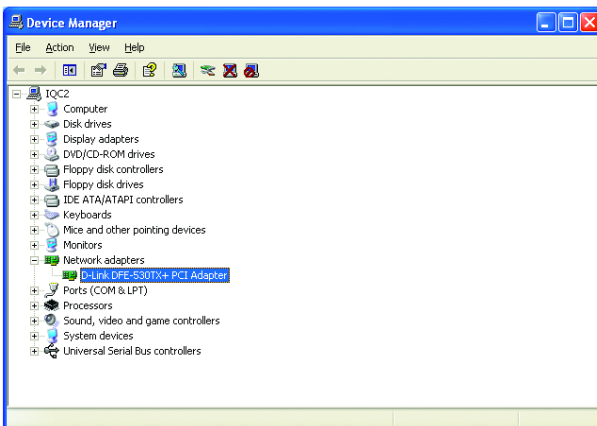


The DFE-530TX+ driver installation is complete.

Click “Finish.”

4

Checking the Installation



Go to: START>SETTINGS> CONTROL PANEL> SYSTEM>HARDWARE> DEVICE MANAGER.

To check that the installation of the **DFE-530TX+** was successful, scroll down and click on “**Network adapters.**” You have a successful installation when “**D-link DFE-530TX+**” appears (with no errors) as shown at left.

Technical Support

You can find the most recent software and user documentation on the **D-Link** website.

D-Link provides free technical support for customers within the United States for the duration of the warranty on this product.

U.S. customers can contact **D-Link** technical support through our web site, by e-mail, or by phone.

United States technical support is available Monday through Friday from 6:00 a.m. to 6:00 p.m. (PST.)

Technical Support Website: <http://www.support.dlink.com>

Email: support@dlink.com

Phone: 949-790-5290

If you are a customer residing outside of the United States, please refer to the list of **D-Link** locations that is included in the User's manual.