

QUICK INSTALL GUIDE

DGE-660TD

VERSION 1.1



D-Link®

WIRED

This Installation Guide includes instructions for:

- Windows Vista™
- Windows® XP
- Windows® 2000

Installation Guide Contents

Section 1: Pre-Installing the Windows® Vista™, XP, and 2000

Section 2: Insert the DGE-660TD into your Laptop

Section 3: Finishing the Windows® Installation

Package Contents

Verify that your D-Link DGE-660TD package contains the following items. If any items are missing, please contact your reseller.

- D-Link DGE-660TD
- Drivers on CD-ROM
- Manual on CD-ROM



For Windows® Vista/XP/2000:
Run the Install CD BEFORE installing the
DGE-660TD into your laptop.

1

Installing the Driver

- With your computer ON, insert the Driver CD of the DGE-660TD into your CD-ROM Drive.
- The Autorun Screen will appear as shown here.
- Select “**Install Drivers**” to install the drivers onto your computer.



- After a few moments, the “**Install Finish**” screen will appear. Click “**OK**”.



- Select “**Yes**,” if you are prompted to restart your computer. Restart the computer manually if the prompt does not occur. (Go to **Start > Shut down > Restart**.)

2

Insert the Adapter

This section refers to all users, regardless of which operating system you use.

NOTE: You must first install the drivers as explained in Section 1. If you have not done this and you have inserted the DGE-660TD into the Cardbus slot, you will need to cancel the New Hardware Wizard, and start over at the beginning of this installation guide.

- Insert the DGE-660TD into the Cardbus slot of your laptop.



- Gently insert the front end of the DGE-660TD into the Cardbus slot on your laptop until it is firmly seated. Make sure that the card is face-up, as shown. Do not force the insertion.
- Connect an Ethernet Cable (CAT5) from a switch or hub to the DGE-660TD.

3

Finishing the Installation

To complete the installation of the DGE-660TD:

- Make sure that the DGE-660TD CD-ROM is inserted in the CD-ROM drive
- The DGE-660TD is inserted into your laptop
- The laptop is turned ON
- See the section below that corresponds to your Operating System to complete the installation:

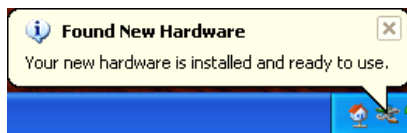
Windows Vista™ Users

Windows Vista™ completes the installation of the DGE-660TD automatically. An “Installing device driver software” message will appear in the task bar to indicate that the installation is in progress.



Windows® XP Users

Windows® XP completes the installation of the DGE-660TD automatically. A “Found New Hardware” message will appear in the task bar to indicate that the installation is complete.



Windows® 2000 Users

Windows® 2000 completes the installation of the DGE-660TD automatically. When the “hour glass” disappears, the installation is complete.

Verify Installation

Step 1:

Windows® 2000: Click on **Start > Settings > Control Panel**

Windows® XP: Click on **Start > Control Panel**

Windows Vista™: Click on **Start > Control Panel**

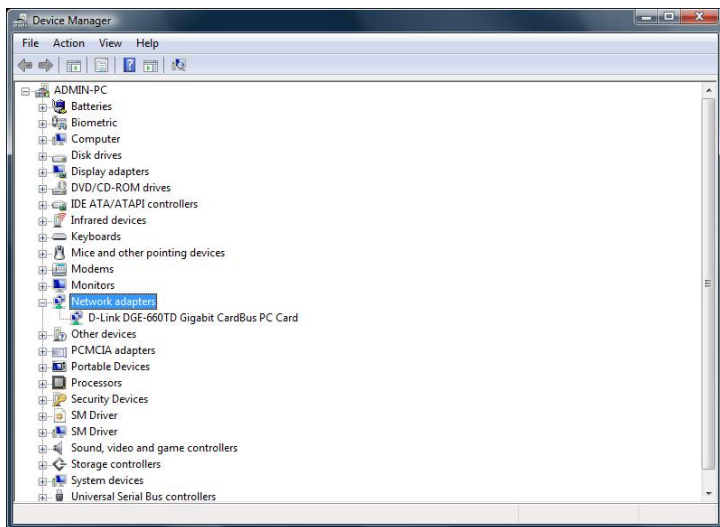
Step 2:

Windows® 2000 and XP: Click on the System icon. Click the **Hardware** tab and then click **Device Manager**.

Windows Vista™: Click on **System and Maintenance** and then click on **Device Manager**.

Step 3:

Scroll down and click the plus (+) sign next to Network Adapters. The **D-Link DGE-660TD Gigabit CardBus PC Card** will be listed.



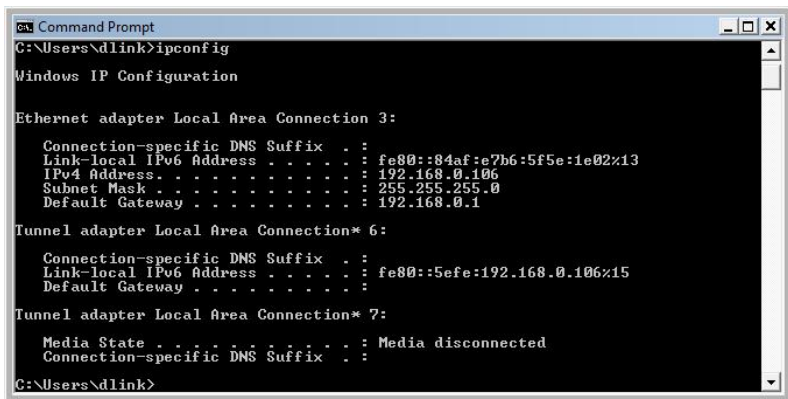
Configure your Adapter

After you install your new D-Link adapter, by default, the TCP/IP settings should be set to obtain an IP address from a DHCP server (i.e router) automatically. To verify your IP address, please see follow the steps below:

Windows® 2000/XP: Click on **Start > Run**. In the run box type **cmd** and click **OK**.

Windows Vista™: Click on **Start > All Programs > Accessories > Command Prompt**.

At the prompt, type **ipconfig** and press **Enter**.



```

C:\Users\dlink>ipconfig

Windows IP Configuration

Ethernet adapter Local Area Connection 3:

    Connection-specific DNS Suffix  . : 
    Link-local IPv6 Address . . . . . : fe80::84af:e7b6:5f5e:1e02x13
    IPv4 Address. . . . . : 192.168.0.106
    Subnet Mask . . . . . : 255.255.255.0
    Default Gateway . . . . . : 192.168.0.1

Tunnel adapter Local Area Connection* 6:

    Connection-specific DNS Suffix  . : 
    Link-local IPv6 Address . . . . . : fe80::5efe:192.168.0.106x15
    Default Gateway . . . . . : 

Tunnel adapter Local Area Connection* 7:

    Media State . . . . . : Media disconnected
    Connection-specific DNS Suffix  . : 

C:\Users\dlink>
```

This will display the IP address, subnet mask, and the default gateway of your adapter.

If the address is 0.0.0.0, check your adapter installation, security settings, and the settings on your router. Some firewall software programs may block a DHCP request on newly installed adapters.

If you are not using a DHCP capable gateway/router, or you need to assign a static IP address, please follow the steps below.

Step 1

Windows® 2000: Click on **Start > Settings > Control Panel > Network Connections**.

Windows® XP : Click on **Start > Control Panel > Network Connections**.

Windows Vista™ : Click on **Start > Control Panel > Network and Internet > Network and Sharing Center > Manage network connections**.

Step 2

Right-click on **Local Area Connection** which represents your D-Link network adapter and select **Properties**.

Step 3

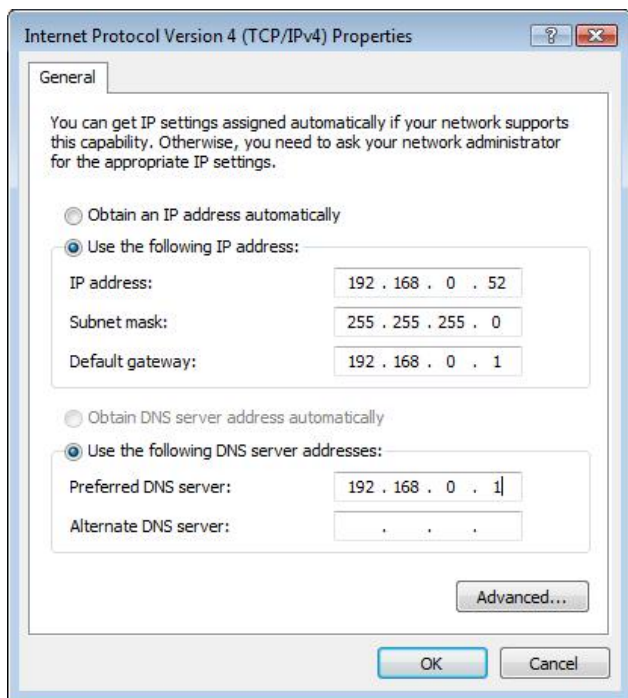
Highlight **Internet Protocol (TCP/IP)** and click **Properties**.

Step 4

Click **Use the following IP address** and enter an IP address that is on the same subnet as your network or the LAN IP address on your router.

Example: If the router's LAN IP address is 192.168.0.1, make your IP address 192.168.0.X where X is a number between 2 and 99. Make sure that the number you choose is not in use on the network. Set Default Gateway the same as the LAN IP address of your router (192.168.0.1).

Set Primary DNS the same as the LAN IP address of your router (192.168.0.1). The Secondary DNS is not needed or you may enter a DNS server from your ISP.



Step 5

Click **OK** twice to save your settings.

Notes

Technical Support

You can find software updates and user documentation on the D-Link website.

U.S. and Canadian customers can contact D-Link technical support through our website, or by phone.

Tech Support for customers within the United States:

(877) 453-5465

<http://support.dlink.com>

Tech Support for customers within Canada:

(800) 361-5265

<http://support.dlink.com>



Version 1.1
August 9, 2007