

QUICK INSTALL GUIDE

DHP-300

VERSION 1.1



D-Link[®]

POWERLINE HD

System Requirements

- Windows® XP SP2 or 2000 SP4
- 233MHz processor and at least 64MB of RAM
- An available Ethernet Adapter (100MBit/s)

Package Contents



DHP-300
Powerline HD Ethernet Adapter



CD-ROM with Manual and
Installation Wizard



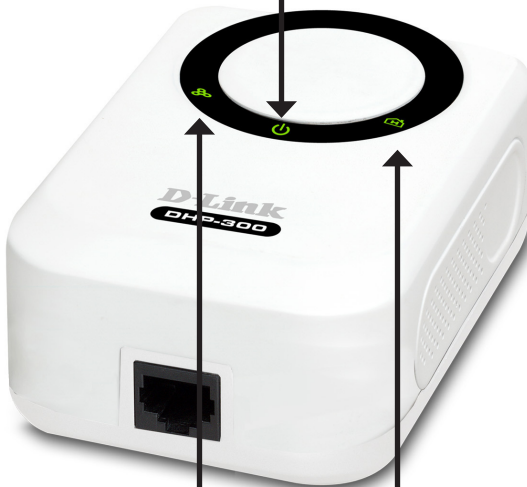
CAT5 Ethernet Cable

If any of the above items are missing, please contact your reseller.

Hardware Overview

Power LED

A solid light indicates that the device is receiving power.



Ethernet LED

A solid light indicates a connection on the Ethernet port. The LED blinks during data transmission.

Powerline LED

A solid light indicates that the device has detected another Powerline device on the network.



Ethernet

Connect CAT5 Ethernet cable to the DHP-300 Ethernet port.

Hardware Installation

Power

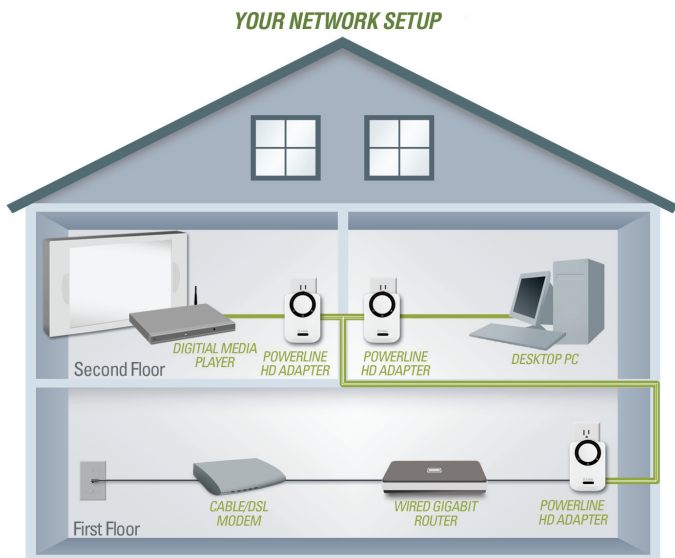
Plug the DHP-300 into an AC wall outlet or power strip.

Note: Power source is confirmed when the green LED Power Indicator on the DHP-300 is illuminated.

Connect the Ethernet Cable

Connect the included Ethernet cable to the network cable connector located on the DHP-300 and attach the other end of the Ethernet cable to the network or PC.

Note: Network Connectivity is confirmed when the green Powerline LED indicator on the DHP-300 is illuminated.



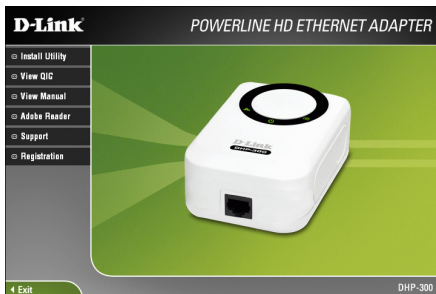
Software Installation

Follow the simple steps below to run the Setup Wizard to guide you quickly through the installation process.

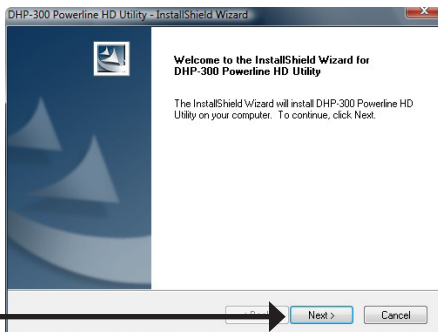
Insert the **D-Link DHP-300 Powerline HD Ethernet Adapter** CD into your CD-ROM drive. If the CD Autorun function does not automatically start on your computer, click **Start > Run**.

In the Run command box type "**D:\DHP300.exe**", where D: represents the drive letter of your CD-ROM. If it does start, proceed to the next screen.

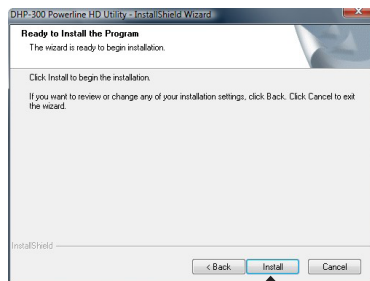
Click on **Install Utility**



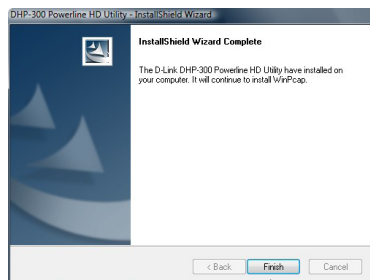
The InstallShield Wizard will begin the DHP-300 software installation.



Click **Next**.



Click **Install**



Click **Finish**

The WinPcap 4.0 installation is necessary to run the DHP-300 Utility, click **Next** to continue with the installation.



Click **Next**

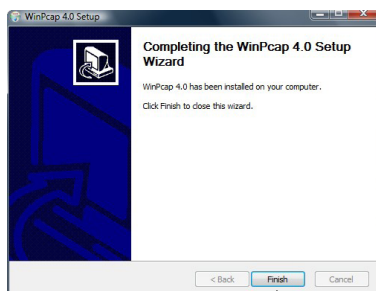


Click **Next**



Click **I Agree**

The WinPcap 4.0 Installation is complete. Click **Finish** to close the wizard.

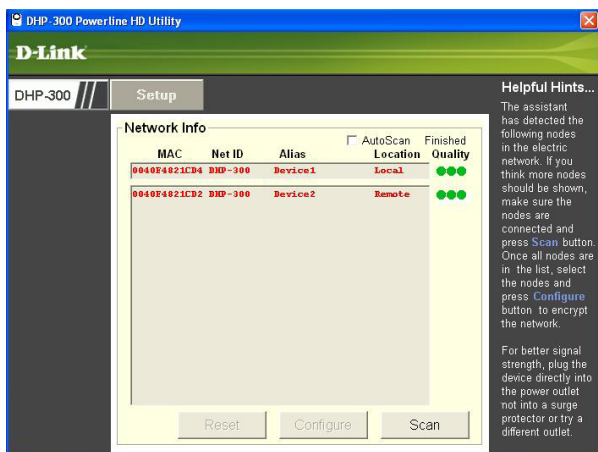


Click **Finish**

Configuration

After you have completed the D-Link DHP-300 Utility installation wizard, double-click the *D-Link DHP-300 Powerline HD Utility* icon on your desktop to start the configuration of the DHP-300.

Double-click the **D-Link DHP-300 Powerline HD Utility** icon.

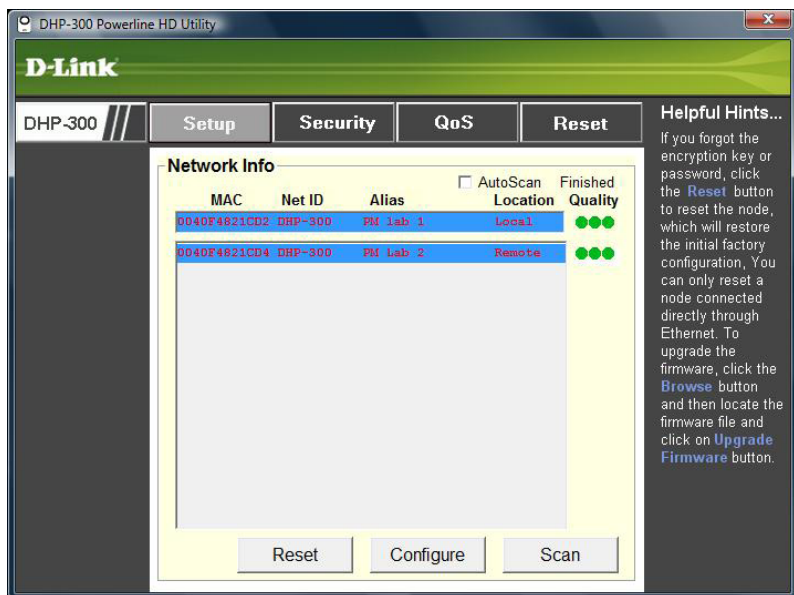


The utility provides you with the option of setting your own unique Network ID and the ability to prioritize traffic passing through the network. The color of text on the MAC, Net ID, Alias, and Location columns represent the status of powerline network.

- Green text - Powerline network is encrypted with non-default encryption key
- Red text - Powerline network is encrypted with default encryption key
- Grey text - Powerline network is not connected due to different Net ID, Encryption key or Password.

Red text on the MAC, Net ID, Alias & Location columns mean that the powerline network is encrypted with the default encryption key (DHP-300). Follow the steps below to encrypt the network with a non-default encryption key:

- Double-click on the nodes.
- Once all the nodes you want to encrypt with a non-default encryption key, click the **Configure** button.



The screen on the previous pages displays the current configuration of the DHP-300.

MAC: MAC Address of detected node.

Net ID: Powerline Network Name. Default is DHP-300 (Max 10 characters, 0-9, A-Z, case sensitive).

Alias: Device Name. Default is Device 1, Device 2 etc (Max 16 characters, 0-9, A-Z, case sensitive) ie. Living room, Bedroom, etc.

Location: Local or Remote nodes.

Quality: Network connection quality of the connected node.

- **Three circles** - Best powerline connection. Suitable for HD video stream connection.
- **Two circles** - Better powerline connection. Suitable for SD video stream connection.
- **One circle** - Good powerline connection. Suitable for data and internet activity connection.

Scan: Scan the powerline network for PLC nodes. Check the **AutoScan** box to scan the network periodically.

Technical Support

D-Link's website contains the latest user documentation and software updates for D-Link products.

U.S. and Canadian customers can contact D-Link Technical Support through our website or by phone.

United States

Telephone

(877) 453-5465

World Wide Web

<http://support.dlink.com>

Canada

Telephone

(800) 361-5265

World Wide Web

<http://support.dlink.com>



Version 1.1
April 27, 2007

Copyright ©2007 D-Link Corporation/D-Link Systems, Inc. All rights reserved. D-Link and the D-Link logo are registered trademarks of D-Link Corporation or its subsidiaries in the United States and other countries. Other trademarks are the property of their respective owners. Network conditions and environmental factors, including volume of network traffic, building materials and construction, and network overhead lower actual data throughput rate. Product specifications, size and shape are subject to change without notice, and actual product appearance may differ from that depicted on the packaging. Visit www.dlink.com for more details.