



User Manual

PowerLine AV 500 4-Port Gigabit Switch

Table of Contents

Product Overview	3	Technical Specifications	27
Package Contents	3	Contacting Technical Support	28
System Requirements	3	Warranty	29
Introduction	4	Registration	34
Features	4		
Hardware Overview	5		
LEDs	5		
Hardware Overview	6		
Simple Connect Button	6		
Connection	7		
Reset Button	8		
Hardware Installation	9		
Push Button Security	10		
Using the Setup Wizard	11		
Configuration	13		
Setup Wizard	14		
Advanced Settings	18		
Device Info	19		
Network Info	20		
Security	21		
Diagnostics	23		
Documentation	24		
Troubleshooting	25		
Customer Support	26		

Package Contents



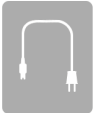
One D-Link DHP-540 PowerLine AV 500 4-Port Gigabit Switch



One CAT5 Ethernet Cable



CD-ROM with Software and User Manual



Power Cord



Quick Install Guide

System Requirements

- Windows® 7, Windows Vista®, XP (with Service Pack 3)
- PC with 233MHz Processor, 64MB Memory
- Ethernet Adapter (1000Mbit/s)

Introduction

D-Link announces the PowerLine AV 500 4-Port Switch which uses the electrical wiring that's already in your house to provide fast, reliable speeds of up to 500Mbps¹ to any room in the house. Simply connect one adapter into an existing power outlet, connect it to your home network router, and plug another adapter into any other room in your house to get instant shared network connections. With 4 Ports, you can connect more devices per room and get blazing speeds in each room without tripping over tangled, messy wires. It's cable management at its best.

Features

- Provides Ethernet to PowerLine Connection
- Fast Data Transfer Rate of up to 500Mbps*
- Four Gigabit Ethernet ports
- Plug & Play, Easy Installation
- Easy to use Management Utility
- Firmware Upgrade Support
- Push Button Security
- Power Saving mode
- Backward compatible to Homeplug AV devices

* Maximum throughput based on theoretical transmission PHY rate. Actual data throughput will vary. Network conditions and environmental factors, including volume of traffic and network overhead, may lower actual data throughput rate. Interference from devices that emit electrical noise, such as vacuum cleaners and hair dryers, may adversely affect the performance of this product. This product may interfere with devices such as lighting systems that have a dimmer switch, short wave radios, or other PowerLine devices that do not follow the HomePlug AV standard.

Hardware Overview

LEDs



1	Power LED	<ul style="list-style-type: none">• Solid - Indicates that the device is receiving electrical power.• Blinking - Indicates that the device is setting itself up after reset or Simple Connect Button was pressed or power saving mode enabled.• Off - The device is not receiving electrical power.
2	PowerLine LED	<ul style="list-style-type: none">• Solid - The device is connected to a PowerLine network.• Blinking - The device is transmitting data.• Off - The device has not found any other compatible PowerLine devices using the same encryption key. <p>The color indicates the PowerLine link rate:</p> <ul style="list-style-type: none">• Green - The PowerLine link rate is faster than 80 Mbps.• Amber - The PowerLine link rate is between 50 Mbps and 80 Mbps.• Red - The PowerLine link rate is less than 50 Mbps.
3	LAN LEDs (1-4)	<ul style="list-style-type: none">• Solid - The Ethernet port is linked but there is no data traffic.• Blinking - The device is transmitting data.• Off - There is no Ethernet connection.

Hardware Overview

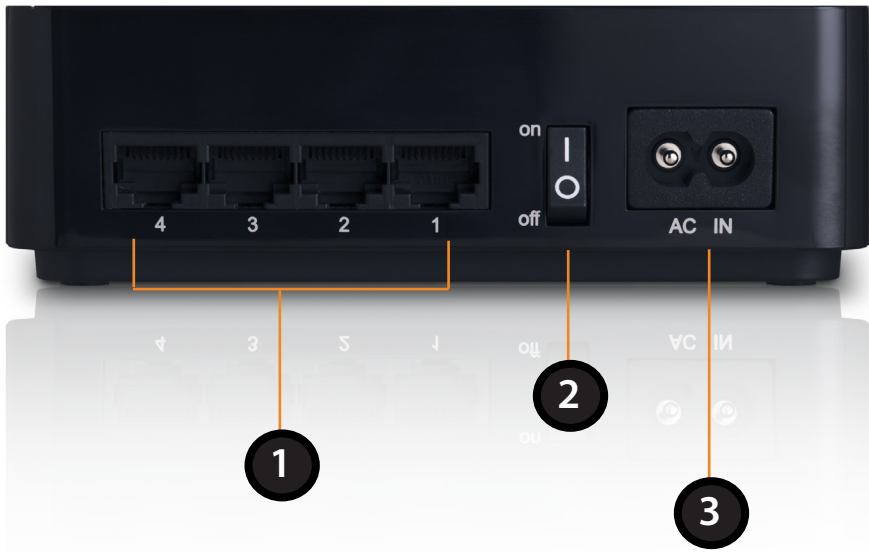
Simple Connect Button



1	Simple Connect Button	Press to secure your connection. Refer to page 9 for more information
---	-----------------------	---

Hardware Overview

Connection



1	Ethernet Ports (1-4)	Connect the CAT5 Ethernet cable to the selected Ethernet port in accordance to priority
2	Power ON/OFF Switch	Press the Switch up to turn ON and down to turn OFF
3	Power Receptor	Receptor for the supplied power cord

Hardware Overview

Reset Button



1	Reset Button	Press to reset your device back to the factory default settings.
---	--------------	--

Hardware Installation

Step 1

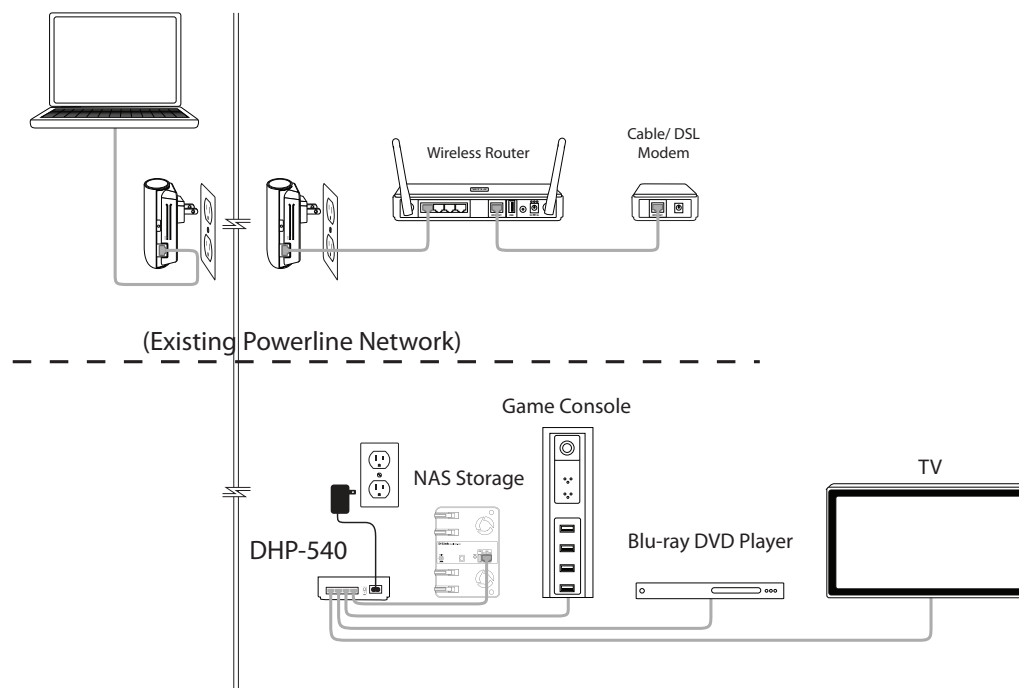
Connect the supplied power cord into the power receptor located on the back of the PowerLine AV 500 4-Port Gigabit Switch and connect the other end to a power outlet. Switch the power button to the ON position located on the back of the PowerLine AV 500 4-Port Gigabit Switch.

Note: *Power source is confirmed when the green LED Power Indicator on the PowerLine AV 500 4- Port Gigabit Switch is illuminated.*

Step 2

Connect the included Ethernet cable to the network cable connector located on the PowerLine AV 500 4-Port Gigabit Switch and attach the other end of the Ethernet cable to the game console, media player, Internet TV or Computer.

Note: *Network Connectivity is confirmed when the PowerLine and Ethernet LED indicators on the PowerLine AV 500 4-Port Gigabit Switch are illuminated.*



Push Button Security

Understanding PowerLine AV Network Security

The PowerLine AV 500 4-Port Gigabit Switch must use an identical encryption key for the network. The default encryption key for each PowerLine AV 500 4-Port Switch is HomePlugAV. All PowerLine AV 500 4-Port Gigabit Switches with a default encryption key will be able to communicate with each other.

It is recommended to create a private encryption key for network security purpose. The private encryption key allows you to protect your network from unauthorized access via the PowerLine network. To create a private encryption key instead of the default encryption key, please follow below steps:

1. PowerLine AV 500 4- Port Gigabit Switch

Press the Simple Connect Button located on the top of the PowerLine AV 500 4-Port Gigabit Switch for three seconds. The Power LED will start blinking after you release the button. The Switch will create a private, randomly generated encryption key that each PowerLine AV 500 4-Port Gigabit Switch will use.

2. Additional Adapters in your existing PowerLine Network

Within two minutes of pushing the Simple Connect Button of the PowerLine AV 500 4-Port Gigabit Switch, press the Simple Connect Button on any additional adapters in your PowerLine Network for three seconds. The Power LED will start blinking after you release the button.

Note: Both Simple Connect Button must be pressed within two minutes.

3. PowerLine Network

After the above network security setup steps, your PowerLine network will be securely configured with the same network encryption key. The PowerLine AV 500 4-Port Gigabit Switch will memorize the security settings even if they are unplugged.

Note: To change the private encryption key, please reset the adapter back to its default value by pressing the Reset button for 2 seconds and then follow the security setup procedure above.



Simple Connect Button

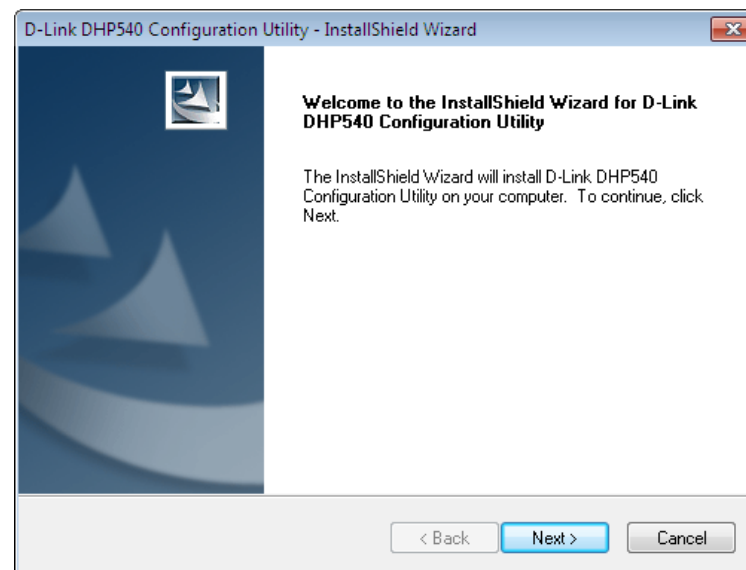
Using the Setup Wizard

Follow the simple steps below to run the Setup Wizard to guide you quickly through the installation process. Insert the D-Link DHP-540 CD into your CD-ROM drive. If the CD Autorun function does not automatically start on your computer, click **Start** > **Run**. In the Run command box type "D:\autorun.exe", where D: represents the drive letter of your CD-ROM. If it does start, proceed to the next screen.

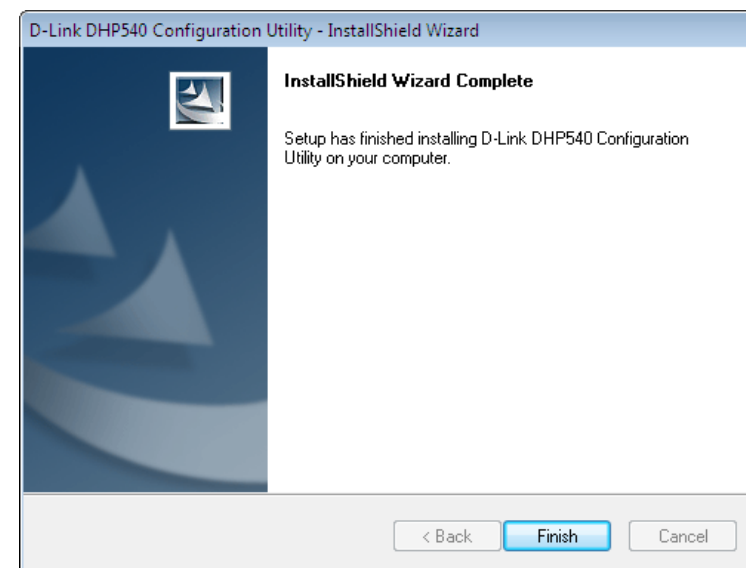
Click on **Install** to begin.



Click **Next** to continue



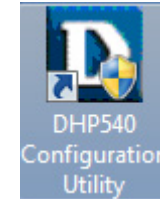
Click **Finish** to complete the installation.



Configuration

After you have completed the D-Link PowerLine Configuration Utility installation wizard, double-click the D-Link DHP-540 Configuration Utility icon on your desktop to start the configuration of the DHP-540.

Double-click the D-Link DHP540 Configuration Utility icon



The D-Link PowerLine Configuration Utility provides you the option of setting your own PowerLine network and the network information of connected PowerLine devices.



Setup Wizard

The setup wizard is designed to assist the installation of your DHP-540. Click the Setup Wizard icon on the left corner of utility to start the installation of the DHP-540.



Click the **Setup Wizard** icon



Plug the DHP-540 power cord into an electric outlet. Plug the other end of the power cord to the back of the device. Then, turn on the device by pushing the power switch to the ON position located on the back of the device.

After you have completed the instruction above, then click **Next** to continue.



1. Connect the Ethernet cable from the LAN port to your computer's Ethernet Port.

2. Please ensure that the LED in front of the device is on and that the corresponding LAN port located on the side of the device is securely connected.

After you have completed the instruction above, then click **Next** to continue.



Connect and encrypt your network. Press the Simple Connect Button within 3 seconds before releasing. The power LED will begin flashing. While the device's LED is flashing. Press the corresponding Simple Connect Button on the other Powerline device(s). This may take a few minutes.



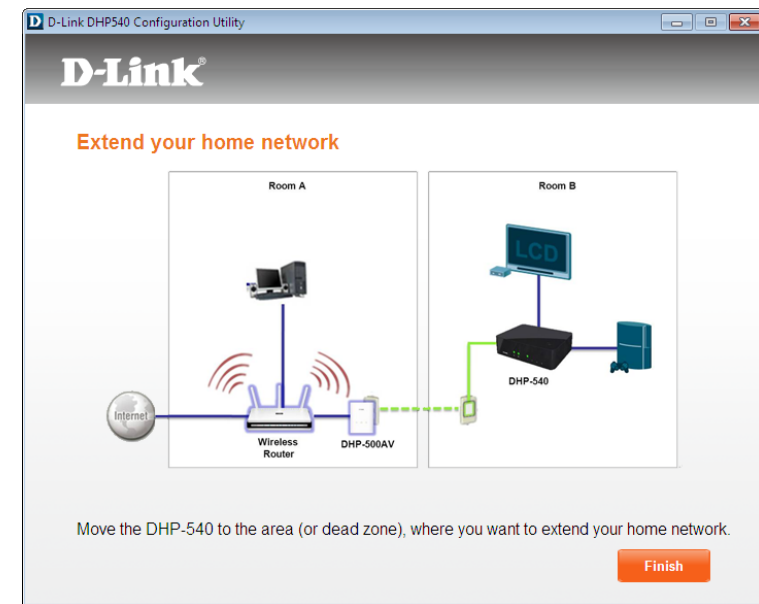
Secure your Powerline network now. Please wait.



Your Powerline network is now secured, Click **Next** to continue.



Click finish to complete the installation.



Advanced Settings

In Advanced Settings, you will be able to find the device information, firmware upgrade to improve functionality of your Powerline device, and create a private encryption key for network security purposes.



Click the **Advanced Settings** icon



Device Info

In Device tab page, you will be able to find the device information that includes the device name, MAC address, and the firmware version. Firmware updates are released periodically to improve the functionality of your Powerline device. If you run into a problem with a specific feature of the Powerline device, please check the D-Link support site for firmware update at <http://support.dlink.com> for your powerline device.

Device Name: Shows the name of the devices that have been discovered.
The device's name is initially set by the utility itself.

MAC Address: Shows the MAC address of the connected PowerLine device.

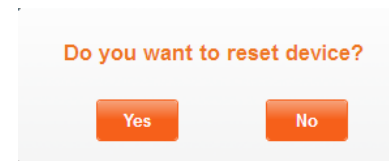
Firmware Version: Shows the firmware version of the connected PowerLine device.

Reset Device: Reset the device back to the factory default settings



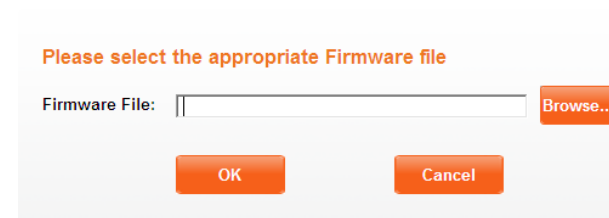
Click **Reset Device** to reset the device back to the factory default settings

Click **Yes** to reset device.



Click **Upgrade FW** to improve the functionality of your Powerline device.

After you have downloaded the new firmware, click **Browse** to locate the firmware update on your hard drive. Click **OK** to complete the firmware upgrade.



Network Info

In Network tab page, you will be able to find the device information that includes the device name, Location, link rate, device password, MAC address and the firmware version.

Device Name: Shows the name of the devices that have been discovered.
The device's name is initially set by the utility itself.

Location: Shows if the device is local or remote.

Rate: Shows the link rate of the connected to the PowerLine device.

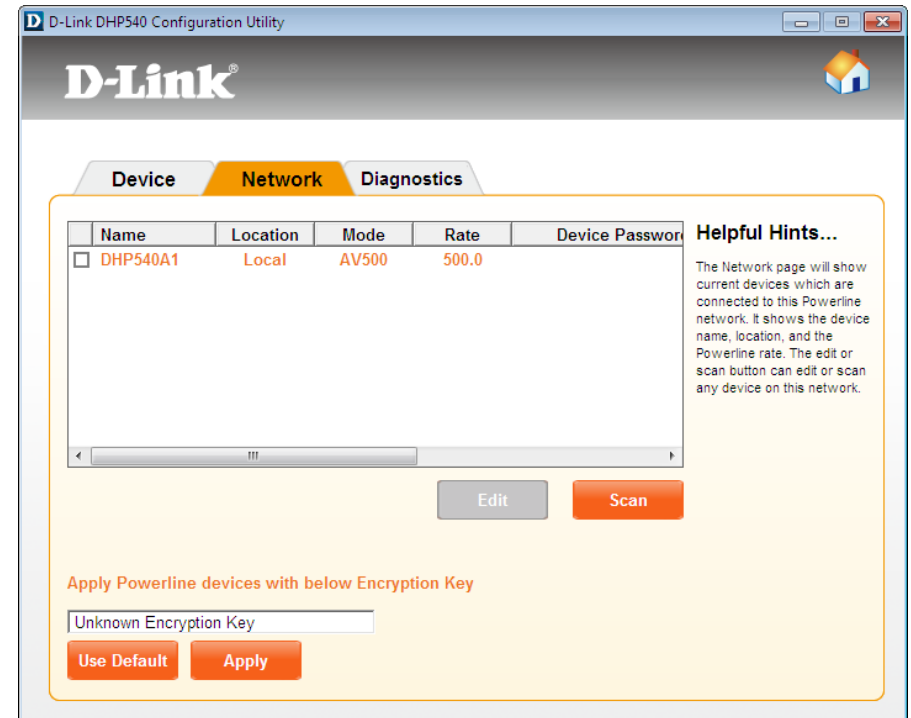
Device Password: Shows the password of the devices that have been discovered.
The device's password is initially set by the utility itself.

MAC Address: Shows the MAC address of the connected PowerLine device.

Firmware Version: Shows the firmware version of the connected PowerLine device.

Scan: Click the Scan icon for new PowerLine devices.

Mode: Show the HomePlug AV standard.
AV500: IEEE 1901 Standard.
AV200: HomePlug AV Standard.



Security

Understanding the Encryption Key setting:

The PowerLine devices on the same network must use an identical encryption key. The default encryption key for each PowerLine device is HomePlugAV. All devices with a default encryption key can communicate with each other. It is recommended to create a private encryption key for network security purpose. The private encryption key allows you to protect your network from unauthorized access via the PowerLine network.

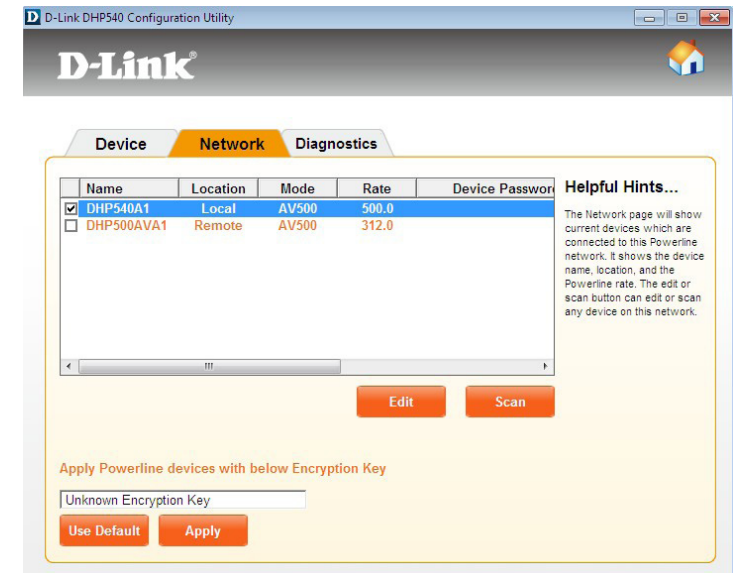
Click **Edit** to set your private Encryption Key.

Setting your private Encryption Key

1. Enter the device's password before changing the encryption key:

- Local Device: You do not need to enter the device's password before changing the encryption key.
- Remote Device: You must enter the device's password before changing the encryption key.

Note: Each device has a unique device password on the device label.



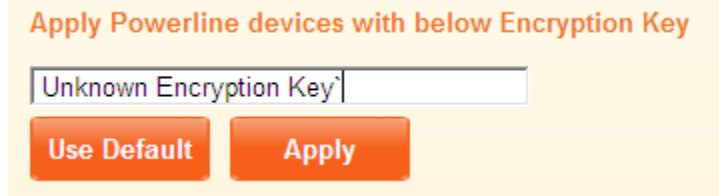
2. Select the remote device and then enter the device's password into the Set Device Password window. Then click **OK**.

Device Name:

Password:

The Password typically appears as a number and letter code, in groups of four, separated by dashes. (ie XK8Y-GH26-BR1K-LZSA) It is found on the device or packaging.

3. Select the PowerLine devices that you would like to apply the encryption key setting. Then, type your private encryption key into the Encryption Key Setting field and click **Apply**. The utility will show a message once the setting has been completed.



A screenshot of a web-based configuration utility. At the top, there is a header in orange text that reads "Apply Powerline devices with below Encryption Key". Below this header is a text input field containing the text "Unknown Encryption Key". Underneath the input field are two orange buttons: "Use Default" on the left and "Apply" on the right.

If the encryption key within the existing PowerLine network has been customized, you have two ways to add the new device to your PowerLine Network.

1. You can use the D-Link DHP-540 Configuration Utility to apply the customized encryption key in your record to the new device. Then all devices can communicate with each other by using the customized encryption key.
2. You can use D-Link DHP-540 Configuration Utility to set all devices within the existing PowerLine Network and the new device back to the first default encryption key. Then follow the 1 to 3 steps of "Setting your private Encryption Key". Your PowerLine network will be securely configured with a customized encryption key and all devices will be able to communicate with each other after your setting.

Diagnostics

This is the current configuration information for your device and system. It displays all diagnostics for the current device.



Documentation

In order to properly view the documents, you will need to use Adobe Reader.

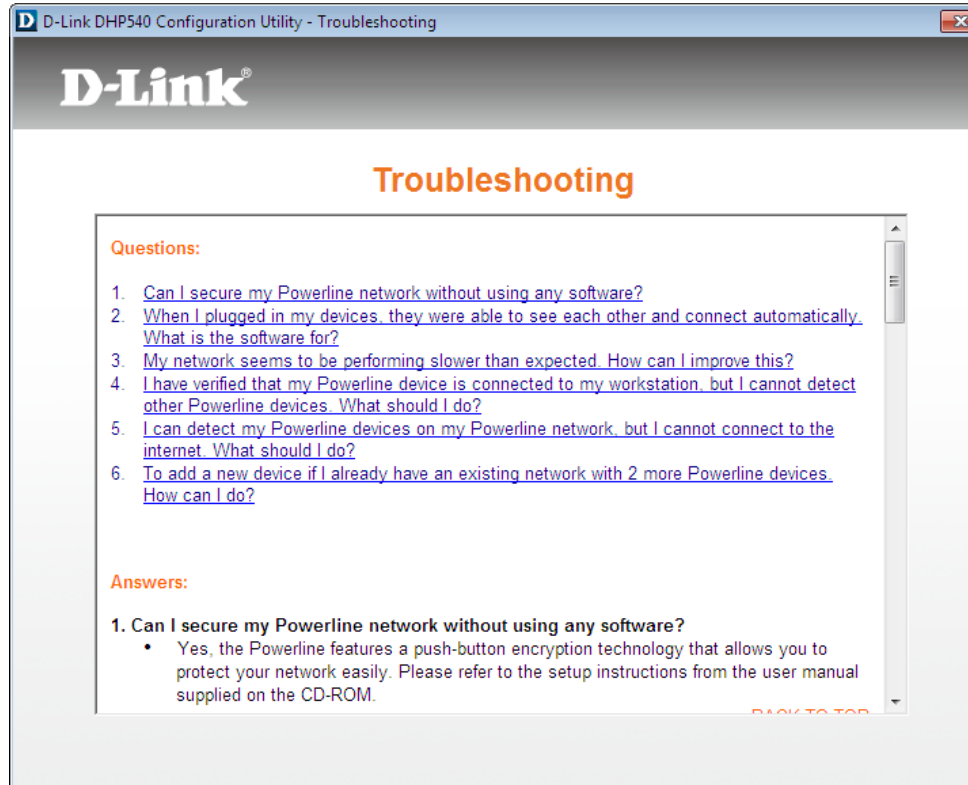
Click the **Documentation** icon



Troubleshooting

This Chapter provides solutions to problems that can occur during the installation and operation of the DHP-540. Read the following description if you are having problems.

Click the **Troubleshooting** icon



Customer Support

U.S. and Canadian customers can contact D-Link technical support through our web site.

Click the **Customer Support** icon



CHOOSE YOUR LOCATION

D-Link Global Headquarters >

☐ Remember selected location as default

AMERICAS

Argentina	Bolivia	Brazil	Canada	Chile	Colombia
Costa Rica	Ecuador	Guatemala	Mexico	Paraguay	Peru
United States	Uruguay	Venezuela	Dominican Republic		

ASIA PACIFIC

Australia	China	Hong Kong	India	Indonesia	Japan
Kazakhstan	Korea	Malaysia	New Zealand	Philippines	Singapore
Taiwan	Thailand	Uzbekistan	Vietnam		

EUROPE

Albania	Austria	Belgium	Belorussia	Bulgaria	Croatia
Czech Republic	Denmark	Eastern Europe	Estonia	Finland	France
Germany	Greece	Hungary	Ireland	Italy	Latvia
Lithuania	Luxembourg	Macedonia	Montenegro	Netherlands	Norway
Poland	Portugal	Romania	Russia	Serbia	Slovenia
Spain	Sweden	Switzerland	Turkey	Ukraine	United Kingdom
Bosnia & Hercegovina					

MIDDLE EAST & AFRICA

Africa	Armenia	Egypt	Georgia	Iran	Israel
Middle East	North Africa	Pakistan	South Africa	Kingdom of Saudi Arabia	

Technical Specifications

Network Ports

- Four 10/100/1000 Ethernet ports

EMC

- FCC Part 15 Class B
- CE Class B
- C-Tick

AC Input

- 100 ~ 240VAC, 50/60Hz

Safety

- UL, CE LVD

Power Consumption Compliance

- EuP (Energy Using Product Directive)
- CoC (Code of Conduct on Energy Consumption of Broadband Equipment)

Encryption

- 128 bit AES

Operation Temperature

- 0°C ~ 40°C

Storage Temperature

- -10°C ~ 70°C

Humidity

- Operation: 10% ~ 90% RH
- Storage: 5% ~ 95% RH

Contacting Technical Support

U.S. and Canadian customers can contact D-Link technical support through our web site or by phone.

Before you contact technical support, please have the following ready:

- Model number of the product (e.g. DHP-540)
- Hardware Revision (located on the label on the bottom of the product (e.g. rev A1))
- Serial Number (s/n number located on the label on the bottom of the product).

You can find software updates and user documentation on the D-Link website as well as frequently asked questions and answers to technical issues.

For customers within the United States:

Phone Support:

(877) 453-5465

Internet Support:

<http://support.dlink.com>

For customers within Canada:

Phone Support:

(800) 361-5265

Internet Support:

<http://support.dlink.ca>

Warranty

Subject to the terms and conditions set forth herein, D-Link Systems, Inc. ("D-Link") provides this Limited Warranty:

- Only to the person or entity that originally purchased the product from D-Link or its authorized reseller or distributor, and
- Only for products purchased and delivered within the fifty states of the United States, the District of Columbia, U.S. Possessions or Protectorates, U.S. Military Installations, or addresses with an APO or FPO.

Limited Warranty:

D-Link warrants that the hardware portion of the D-Link product described below ("Hardware") will be free from material defects in workmanship and materials under normal use from the date of original retail purchase of the product, for the period set forth below ("Warranty Period"), except as otherwise stated herein.

- Hardware (excluding power supplies and fans): One (1) year
- Power supplies and fans: One (1) year
- Spare parts and spare kits: Ninety (90) days

The customer's sole and exclusive remedy and the entire liability of D-Link and its suppliers under this Limited Warranty will be, at D-Link's option, to repair or replace the defective Hardware during the Warranty Period at no charge to the original owner or to refund the actual purchase price paid. Any repair or replacement will be rendered by D-Link at an Authorized D-Link Service Office. The replacement hardware need not be new or have an identical make, model or part. D-Link may, at its option, replace the defective Hardware or any part thereof with any reconditioned product that D-Link reasonably determines is substantially equivalent (or superior) in all material respects to the defective Hardware. Repaired or replacement hardware will be warranted for the remainder of the original Warranty Period or ninety (90) days, whichever is longer, and is subject to the same limitations and exclusions. If a material defect is incapable of correction, or if D-Link determines that it is not practical to repair or replace the defective Hardware, the actual price paid by the original purchaser for the defective Hardware will be refunded by D-Link upon return to D-Link of the defective Hardware. All Hardware or part thereof that is replaced by D-Link, or for which the purchase price is refunded, shall become the property of D-Link upon replacement or refund.

Limited Software Warranty:

D-Link warrants that the software portion of the product ("Software") will substantially conform to D-Link's then current functional specifications for the Software, as set forth in the applicable documentation, from the date of original retail purchase of the Software for a period of ninety (90) days ("Software Warranty Period"), provided that the Software is properly installed on approved hardware and operated as contemplated in its documentation. D-Link further warrants that, during the Software Warranty Period, the magnetic media on which D-Link delivers the Software will be free of physical defects. The customer's sole and exclusive remedy and the entire liability of D-Link and its suppliers under this Limited Warranty will be, at D-Link's option, to replace the non-conforming Software (or defective media) with software that substantially conforms to D-Link's functional specifications for the Software or to refund the portion of the actual purchase price paid that is attributable to the Software. Except as otherwise agreed by D-Link in writing, the replacement Software is provided only to the original licensee, and is subject to the terms and conditions of the license granted by D-Link for the Software. Replacement Software will be warranted for the remainder of the original Warranty Period and is subject to the same limitations and exclusions. If a material non-conformance is incapable of correction, or if D-Link determines in its sole discretion that it is not practical to replace the non-conforming Software, the price paid by the original licensee for the non-conforming Software will be refunded by D-Link; provided that the non-conforming Software (and all copies thereof) is first returned to D-Link. The license granted respecting any Software for which a refund is given automatically terminates.

Non-Applicability of Warranty:

The Limited Warranty provided hereunder for Hardware and Software portions of D-Link's products will not be applied to and does not cover any refurbished product and any product purchased through the inventory clearance or liquidation sale or other sales in which D-Link, the sellers, or the liquidators expressly disclaim their warranty obligation pertaining to the product and in that case, the product is being sold "As-Is" without any warranty whatsoever including, without limitation, the Limited Warranty as described herein, notwithstanding anything stated herein to the contrary.

Submitting A Claim:

The customer shall return the product to the original purchase point based on its return policy. In case the return policy period has expired and the product is within warranty, the customer shall submit a claim to D-Link as outlined below:

- The customer must submit with the product as part of the claim a written description of the Hardware defect or Software nonconformance in sufficient detail to allow D-Link to confirm the same, along with proof of purchase of the product (such as a copy of the dated purchase invoice for the product) if the product is not registered.
- The customer must obtain a Case ID Number from D-Link Technical Support at 1-877-453-5465, who will attempt to assist the customer in resolving any suspected defects with the product. If the product is considered defective, the customer must obtain a Return Material Authorization ("RMA") number by completing the RMA form and entering the assigned Case ID Number at <https://rma.dlink.com/>.

- After an RMA number is issued, the defective product must be packaged securely in the original or other suitable shipping package to ensure that it will not be damaged in transit, and the RMA number must be prominently marked on the outside of the package. Do not include any manuals or accessories in the shipping package. DLink will only replace the defective portion of the product and will not ship back any accessories.
- The customer is responsible for all in-bound shipping charges to D-Link. No Cash on Delivery (“COD”) is allowed. Products sent COD will either be rejected by D-Link or become the property of D-Link. Products shall be fully insured by the customer and shipped to D-Link Systems, Inc., 17595 Mt. Herrmann, Fountain Valley, CA 92708. D-Link will not be held responsible for any packages that are lost in transit to D-Link. The repaired or replaced packages will be shipped to the customer via UPS Ground or any common carrier selected by D-Link. Return shipping charges shall be prepaid by D-Link if you use an address in the United States, otherwise we will ship the product to you freight collect. Expedited shipping is available upon request and provided shipping charges are prepaid by the customer. D-Link may reject or return any product that is not packaged and shipped in strict compliance with the foregoing requirements, or for which an RMA number is not visible from the outside of the package. The product owner agrees to pay D-Link’s reasonable handling and return shipping charges for any product that is not packaged and shipped in accordance with the foregoing requirements, or that is determined by D-Link not to be defective or non-conforming.

What Is Not Covered:

The Limited Warranty provided herein by D-Link does not cover:

Products that, in D-Link’s judgment, have been subjected to abuse, accident, alteration, modification, tampering, negligence, misuse, faulty installation, lack of reasonable care, repair or service in any way that is not contemplated in the documentation for the product, or if the model or serial number has been altered, tampered with, defaced or removed; Initial installation, installation and removal of the product for repair, and shipping costs; Operational adjustments covered in the operating manual for the product, and normal maintenance; Damage that occurs in shipment, due to act of God, failures due to power surge, and cosmetic damage; Any hardware, software, firmware or other products or services provided by anyone other than D-Link; and Products that have been purchased from inventory clearance or liquidation sales or other sales in which D-Link, the sellers, or the liquidators expressly disclaim their warranty obligation pertaining to the product.

While necessary maintenance or repairs on your Product can be performed by any company, we recommend that you use only an Authorized D-Link Service Office. Improper or incorrectly performed maintenance or repair voids this Limited Warranty.

Disclaimer of Other Warranties:

EXCEPT FOR THE LIMITED WARRANTY SPECIFIED HEREIN, THE PRODUCT IS PROVIDED “AS-IS” WITHOUT ANY WARRANTY OF ANY KIND WHATSOEVER INCLUDING, WITHOUT LIMITATION, ANY WARRANTY OF MERCHANTABILITY, FITNESS FOR A PARTICULAR PURPOSE AND NONINFRINGEMENT.

IF ANY IMPLIED WARRANTY CANNOT BE DISCLAIMED IN ANY TERRITORY WHERE A PRODUCT IS SOLD, THE DURATION OF SUCH IMPLIED WARRANTY SHALL BE LIMITED TO THE DURATION OF THE APPLICABLE WARRANTY PERIOD SET FORTH ABOVE. EXCEPT AS EXPRESSLY COVERED UNDER THE LIMITED WARRANTY PROVIDED HEREIN, THE ENTIRE RISK AS TO THE QUALITY, SELECTION AND PERFORMANCE OF THE PRODUCT IS WITH THE PURCHASER OF THE PRODUCT.

Limitation of Liability:

TO THE MAXIMUM EXTENT PERMITTED BY LAW, D-LINK IS NOT LIABLE UNDER ANY CONTRACT, NEGLIGENCE, STRICT LIABILITY OR OTHER LEGAL OR EQUITABLE THEORY FOR ANY LOSS OF USE OF THE PRODUCT, INCONVENIENCE OR DAMAGES OF ANY CHARACTER, WHETHER DIRECT, SPECIAL, INCIDENTAL OR CONSEQUENTIAL (INCLUDING, BUT NOT LIMITED TO, DAMAGES FOR LOSS OF GOODWILL, LOSS OF REVENUE OR PROFIT, WORK STOPPAGE, COMPUTER FAILURE OR MALFUNCTION, FAILURE OF OTHER EQUIPMENT OR COMPUTER PROGRAMS TO WHICH D-LINK'S PRODUCT IS CONNECTED WITH, LOSS OF INFORMATION OR DATA CONTAINED IN, STORED ON, OR INTEGRATED WITH ANY PRODUCT RETURNED TO D-LINK FOR WARRANTY SERVICE) RESULTING FROM THE USE OF THE PRODUCT, RELATING TO WARRANTY SERVICE, OR ARISING OUT OF ANY BREACH OF THIS LIMITED WARRANTY, EVEN IF D-LINK HAS BEEN ADVISED OF THE POSSIBILITY OF SUCH DAMAGES. THE SOLE REMEDY FOR A BREACH OF THE FOREGOING LIMITED WARRANTY IS REPAIR, REPLACEMENT OR REFUND OF THE DEFECTIVE OR NONCONFORMING PRODUCT. THE MAXIMUM LIABILITY OF D-LINK UNDER THIS WARRANTY IS LIMITED TO THE PURCHASE PRICE OF THE PRODUCT COVERED BY THE WARRANTY. THE FOREGOING EXPRESS WRITTEN WARRANTIES AND REMEDIES ARE EXCLUSIVE AND ARE IN LIEU OF ANY OTHER WARRANTIES OR REMEDIES, EXPRESS, IMPLIED OR STATUTORY.

Governing Law:

This Limited Warranty shall be governed by the laws of the State of California. Some states do not allow exclusion or limitation of incidental or consequential damages, or limitations on how long an implied warranty lasts, so the foregoing limitations and exclusions may not apply. This Limited Warranty provides specific legal rights and you may also have other rights which vary from state to state.

Trademarks:

D-Link is a registered trademark of D-Link Systems, Inc. Other trademarks or registered trademarks are the property of their respective owners.

Copyright Statement:

No part of this publication or documentation accompanying this product may be reproduced in any form or by any means or used to make any derivative such as translation, transformation, or adaptation without permission from D-Link Corporation/D-Link Systems, Inc., as stipulated by the United States Copyright Act of 1976 and any amendments thereto. Contents are subject to change without prior notice.

Copyright 2011 by D-Link Corporation/D-Link Systems, Inc. All rights reserved.

CE Mark Warning:

This is a Class B product. In a domestic environment, this product may cause radio interference, in which case the user may be required to take adequate measures.

FCC Statement:

This equipment has been tested and found to comply with the limits for a Class B digital device, pursuant to part 15 of the FCC Rules. These limits are designed to provide reasonable protection against harmful interference in a residential installation. This equipment generates, uses, and can radiate radio frequency energy and, if not installed and used in accordance with the instructions, may cause harmful interference to radio communication. However, there is no guarantee that interference will not occur in a particular installation. If this equipment does cause harmful interference to radio or television reception, which can be determined by turning the equipment off and on, the user is encouraged to try to correct the interference by one or more of the following measures:

- Reorient or relocate the receiving antenna.
- Increase the separation between the equipment and receiver.
- Connect the equipment into an outlet on a circuit different from that to which the receiver is connected.
- Consult the dealer or an experienced radio/TV technician for help.

For detailed warranty information applicable to products purchased outside the United States, please contact the corresponding local D-Link office.

Registration

Register your product online at registration.dlink.com



Product registration is entirely voluntary and failure to complete or return this form will not diminish your warranty rights.

Version 1.0
February 16, 2011