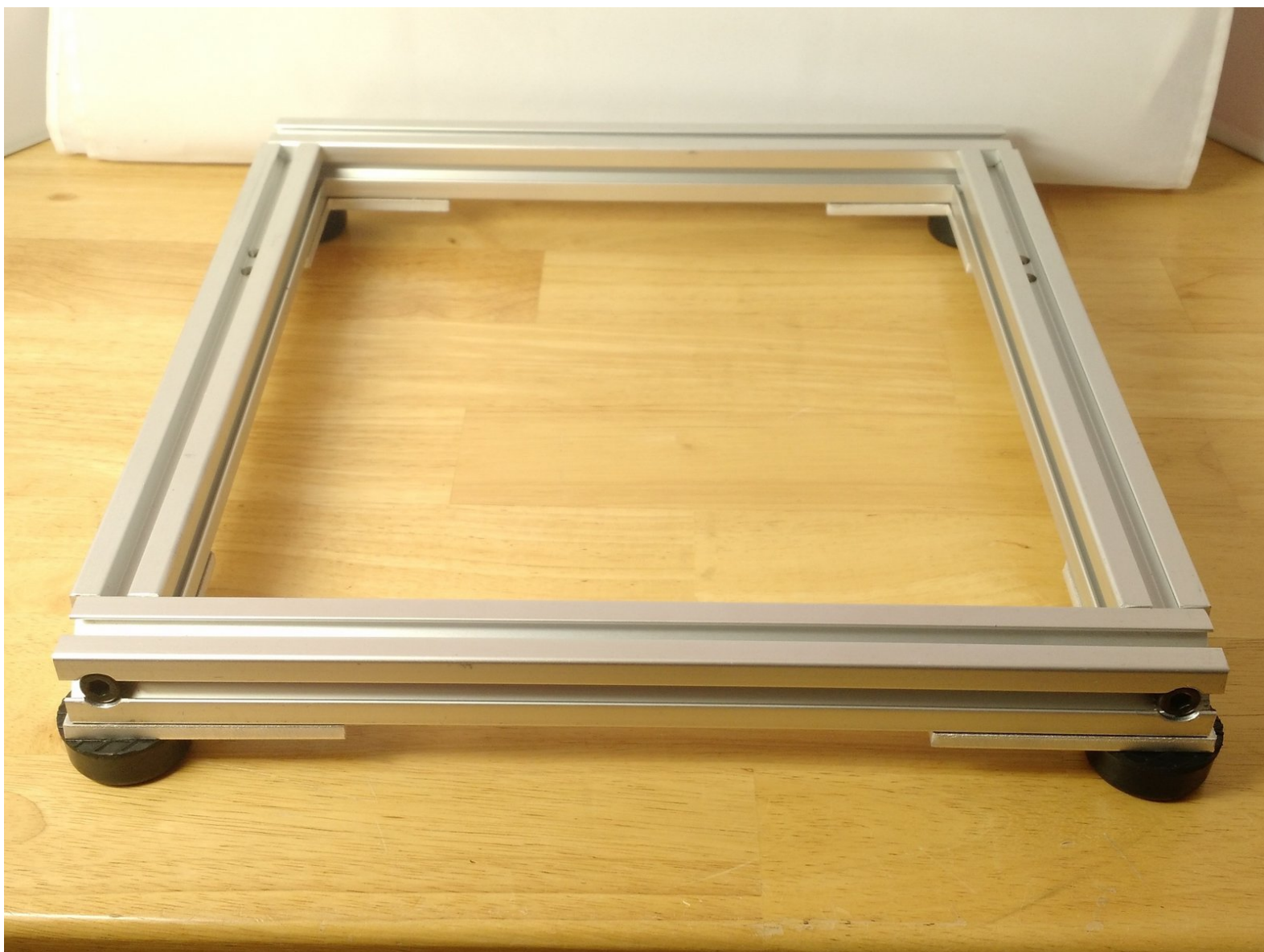




1. Y Axis Frame

Y axis frame of the Prusa B1 printer

Written By: Juan Francisco





TOOLS:

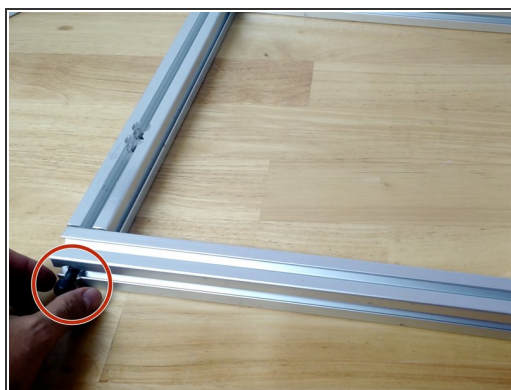
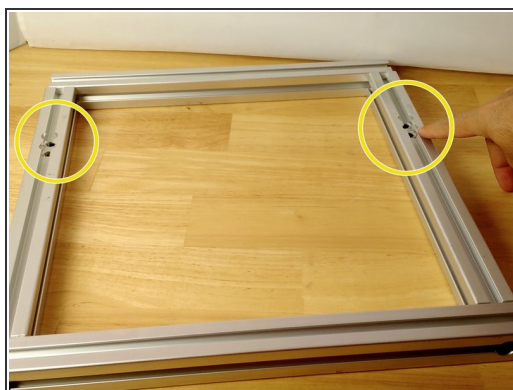
- [Allen Wrench 7/32"](#) (1)
-

Step 1 — preparing the components



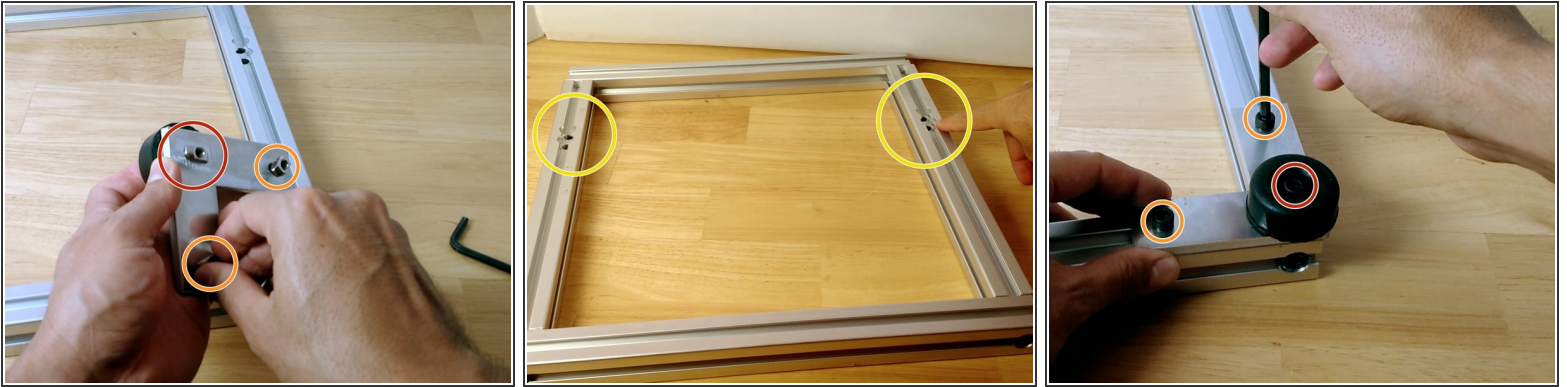
- 2 X axis member
- 2 Y axis member
- 4 L bracket (Printed or Laser cut)
- 4 Rubber feet
- 4 M8 x 40mm socket screws
- 8 M6 x 12mm socket screws
- 4 M6 x 20mm socket screws
- 12 T-slot nuts

Step 2



- Make sure the sockets for the screws are aligned and in the same side.
- Using the M8 x 40 screws, join the X and Y members
- Tighten just enough to keep the frame assemble together.

Step 3



- Locate the bottom of the frame, where the socket for the head of the screw is drilled.
- On the L bracket place
 - 2 M6 x 12mm screws
 - 1 M6 x 20mm screw
- Align on the extrusion and tighten the screws

To reassemble your device, follow these instructions in reverse order.