



# 1999-2004 Jeep Grand Cherokee AC/Heater Fan Wire Connector Repair

Learn to fix and repair the fan wiring in your Jeep Grand Cherokee.

Written By: William Schaller



## INTRODUCTION

The 1999-2004 Jeep Grand Cherokee has a common failure where the blower fan wire adapter overheats and melts. Use this guide to fix and repair this connector and get your AC and Heater working again!



### TOOLS:

- [Flashlight](#) (1)
  - [Electrical Tape in 6 Assorted Colors](#) (1)
  - [Utility Scissors](#) (1)
  - [Phillips #2 Screwdriver](#) (1)
-

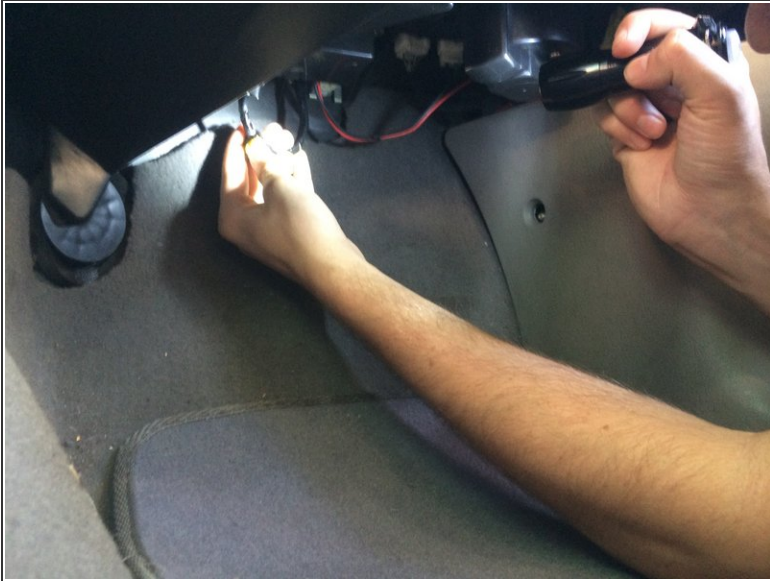
## Step 1 — 1999-2004 Jeep Grand Cherokee AC/Heater Fan Wire Connector Repair



- Place the car in park, activate the parking brake, and leave the car running.
- The blower motor is located under the dash on the passenger side of the vehicle. Push the seat back, and place your tools on the floor of the car.

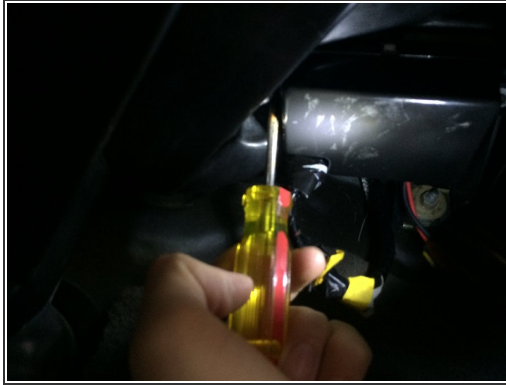


## Step 2



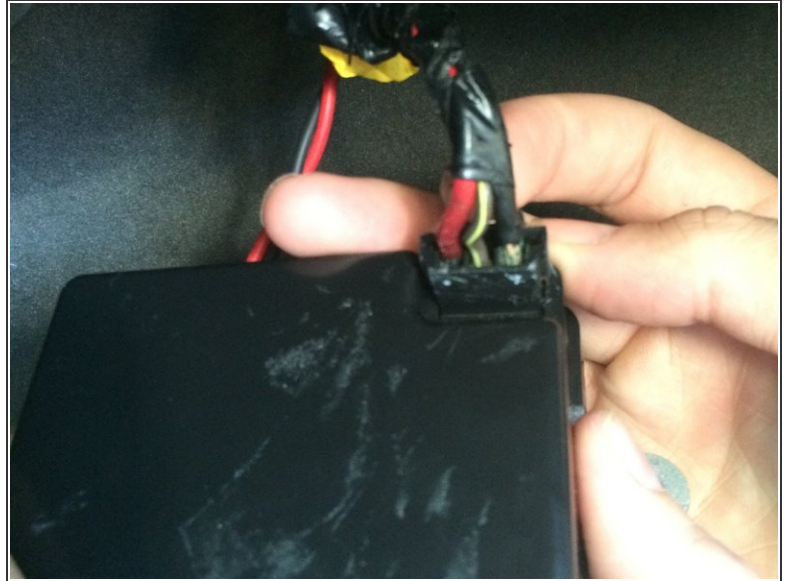
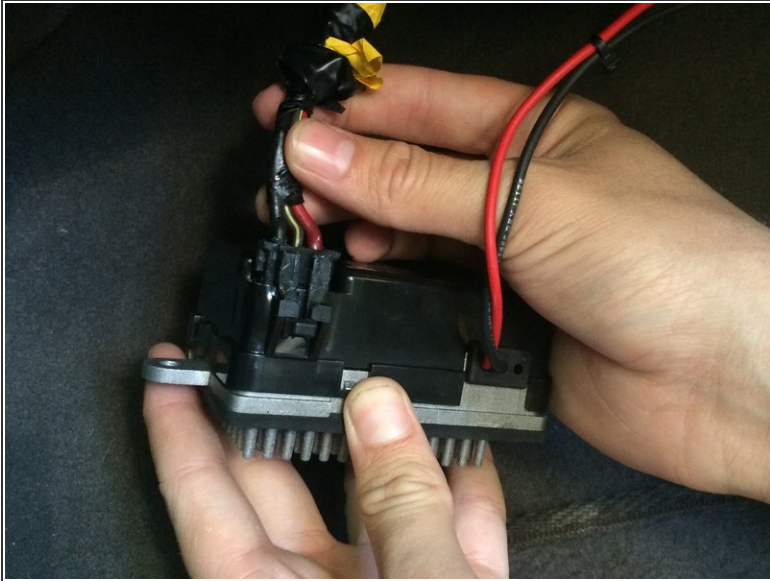
- There are a few wires hanging below the passenger side dash.
  - The blower motor adapter is a bundle of three wires located on the left side.
  - While the car is on push and pull gently on the wire connection.
  - If the fan turns on you have identified the problem and we will fix it.
  - ⓘ If the fan does not turn on the damage may not be fixable without purchasing new parts.
- ⚠ Do not grasp any wires you can not see. Do not grasp any wires that are not covered in insulation and or electrical tape.

## Step 3



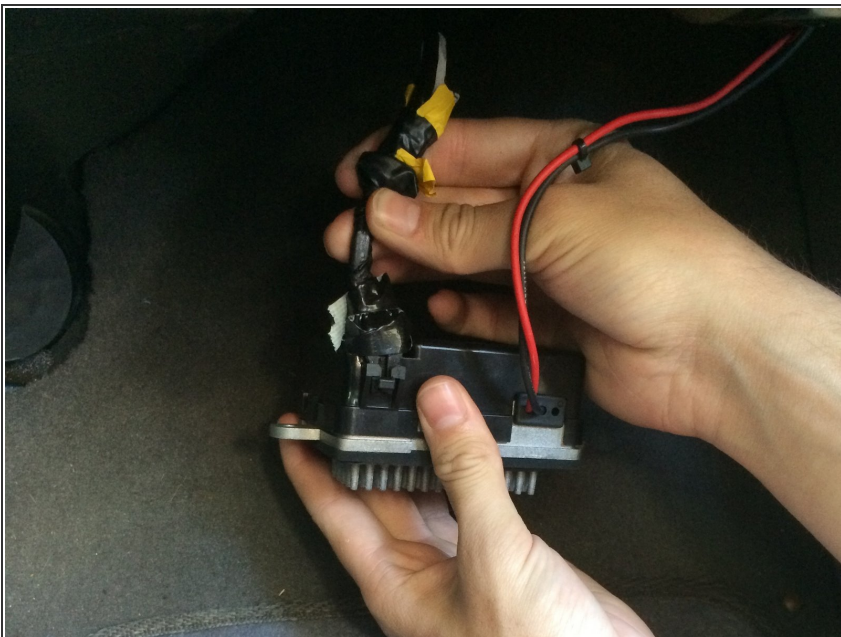
- Turn off the car.
- There are two screws holding the adapter in place. Using a philips screw driver, remove both screws and the adapter will come down.
- ⓘ The two screws are identical. Be careful not to lose them.
- ⚠ Be sure the car is completely off before unscrewing anything.

## Step 4



- The connection between the three wires and the adapter box is the location of where the fault typically occurs.
- Observe the damage and decide if electrical tape will be enough to hold the wires in place.
- ⓘ Replacement parts are available for purchase if the damage is beyond repair.

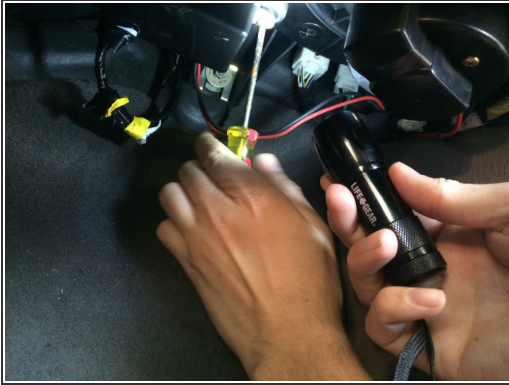
## Step 5



- Using electrical tape wrap the wires tightly until there are securely in place.



## Step 6



- Screw the adapter back into place.
- Turn on the car and test the AC/Heater

Enjoy your working AC and Heater!