



2000-2006 Toyota Celica Front Sway Bar Link Replacement

This guide will show you step by step how to replace an old sway bar link on a model year 2000-2006 Toyota Celica

Written By: Chounly Morl



INTRODUCTION

If you can hear a knocking noise coming from the suspension of your car or your car feels unstable during turns, it may be time to replace your car's sway bar links. Fortunately, replacing sway bar links is not a difficult task. Simply follow these instructions, and your car will be stable again.



TOOLS:

- [Socket 14mm](#) (1)
- [Hydraulic Floor Jack](#) (1)
- [Lug Wrench](#) (1)
- [Penetrating Lubricant](#) (1)
- [64 Bit Driver Kit](#) (1)
- [Torque Wrench](#) (1)



PARTS:

- [Front Sway Bar Link Kit](#) (1)

Step 1 — Sway Bar Links



- **Tools needed:**
 - A 14mm socket wrench
 - A 4mm Allen wrench
 - Penetrating lubricant
 - A lug wrench
 - Torque wrench
 - Two new sway bar links

Step 2



- To access the bolts first remove cap center from wheel by prying with a screwdriver.
- Using the lug wrench, turn the lug nuts for the front passenger side wheel counterclockwise until you break their resistance.
- ⓘ Use your foot or all of your body weight if necessary.
- ⚠ **DO NOT** remove bolts from the wheel.

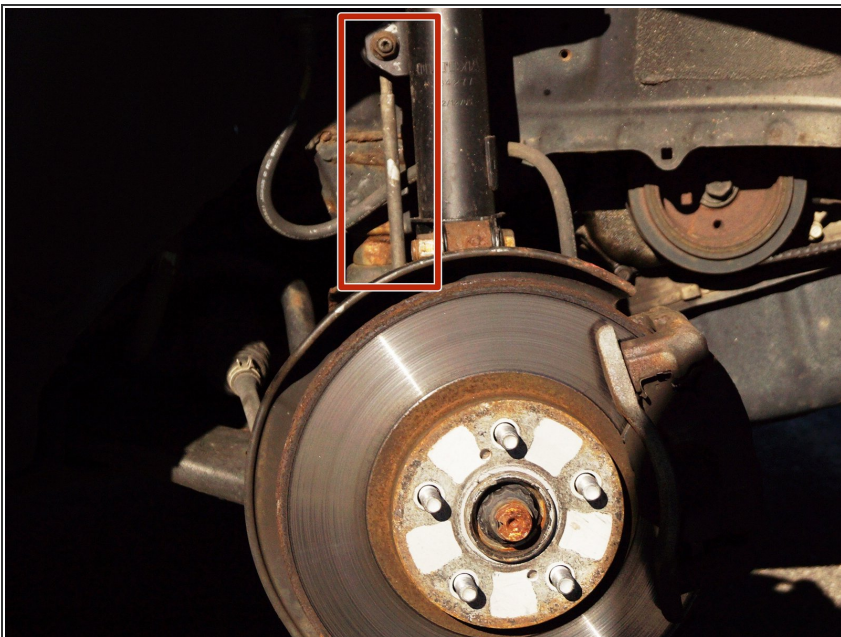
Step 3



⚠ DO NOT USE THE JACK TO KEEP THE CAR LIFTED. Place jack stands or cinder blocks underneath the car.

- You will need to begin by jacking up the front of your car. If you need help with using a hydraulic jack, see the guide below:
- [How to Jack Up a Car \(or Truck\)](#)
- Take the 14mm lug wrench and loosen all the bolts until they come off of the wheel and remove the wheel.

Step 4



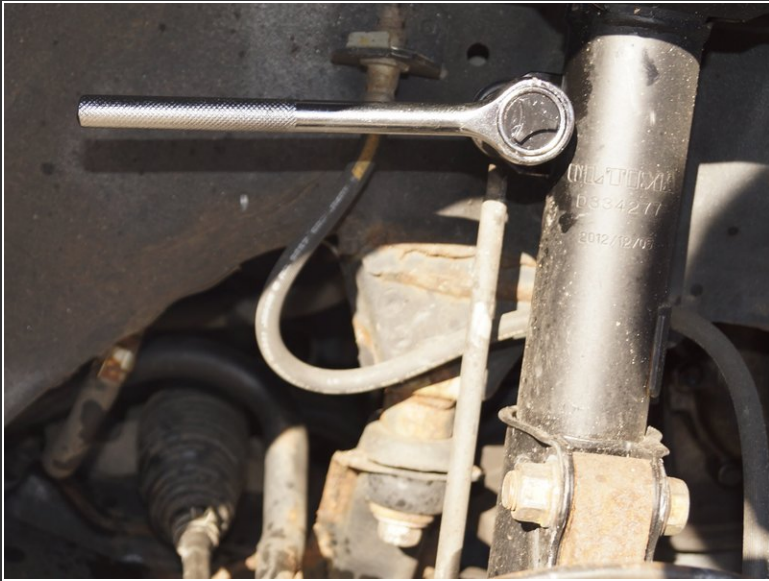
- The sway bar link is located behind the brake shield, connecting the sway bar and suspension.

Step 5



- Use the penetrating lubricant to spray on the top nut, which attaches the sway bar link to the suspension.
- Use the penetrating lubricant to spray the bottom nut, which attaches the sway bar link to the sway bar.

Step 6



- Use the 14mm socket wrench to take off the top nut.
- ⓘ If the sway bar link's joint is spinning and the nut does not come off, use the 4mm Allen wrench to hold down the sway bar link. See the second picture for details.

Step 7



- Repeat Step 7 for the bottom nut of the sway bar link.

Step 8



- After taking all the nuts off, use the bar from the hydraulic jack to push down the sway bar so that it is easier to take the sway bar link off.

Step 9



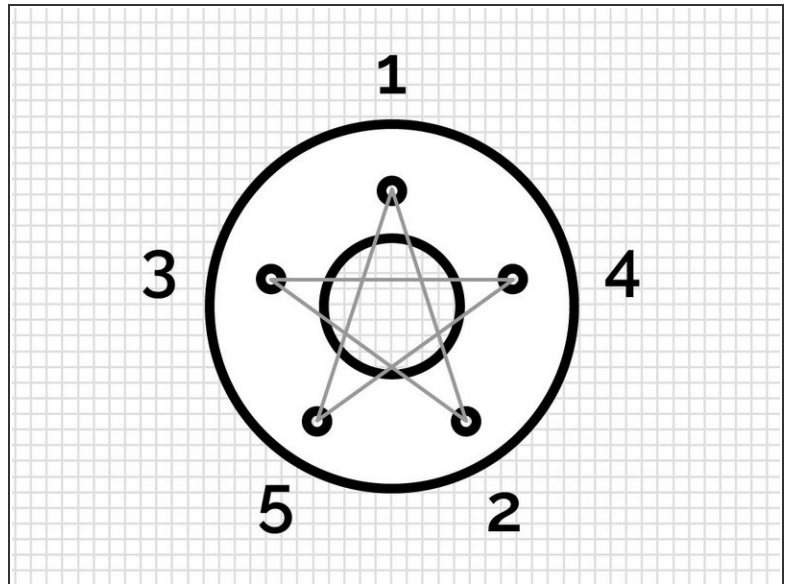
- To put the new sway bar link in, use the bar from the hydraulic jack to push down the sway bar, and then insert the new sway bar link.

Step 10



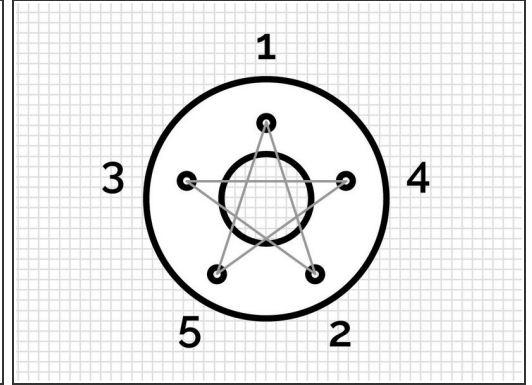
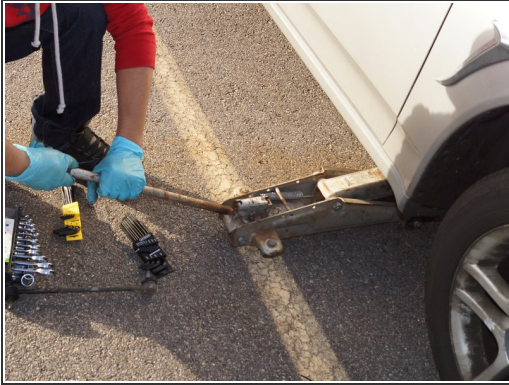
- Use the 4mm Allen wrench or 14mm socket wrench to tighten the nut onto the bottom sway bar link.
- Repeat for the top sway bar link.
- ⓘ The 4mm Allen wrench is not necessary for this step.

Step 11



- Put the tire back on and tighten the lug nuts using the lug wrench.
- ⓘ Only tighten tire until there is enough resistance to keep the tire attached to the wheel hub, with the following pattern to ensure proper tire alignment.

Step 12



- Place the hydraulic jack back under the car and lift it off the cinder blocks or jack stands.
 - Remove the cinder blocks or jack stands and lower the car back to the ground.
 - Further tighten the lug nuts using the torque wrench.
- i** Tighten each nut with a torque wrench to a torque of 80ft/lb. See third picture for pattern to ensure proper tire alignment.

Sway Bar Links tend to wear out at a similar rates. Repeat Steps 2-13 for the driver's side Sway Bar Link.