



# 2004 Mazda 3 Stereo-CD Player (BN85-66-9RXA) Disassembly

This guide will show you how to remove the front panel and the metal casing of this 2004 Mazda 3 stereo unit in order to expose the 5-disc CD drive.

Written By: Robin Nystrom



---

## INTRODUCTION

This guide will show you how to remove the front panel and the metal casing of this 2004 Mazda 3 stereo unit in order to expose the 5-disc CD drive.



### TOOLS:

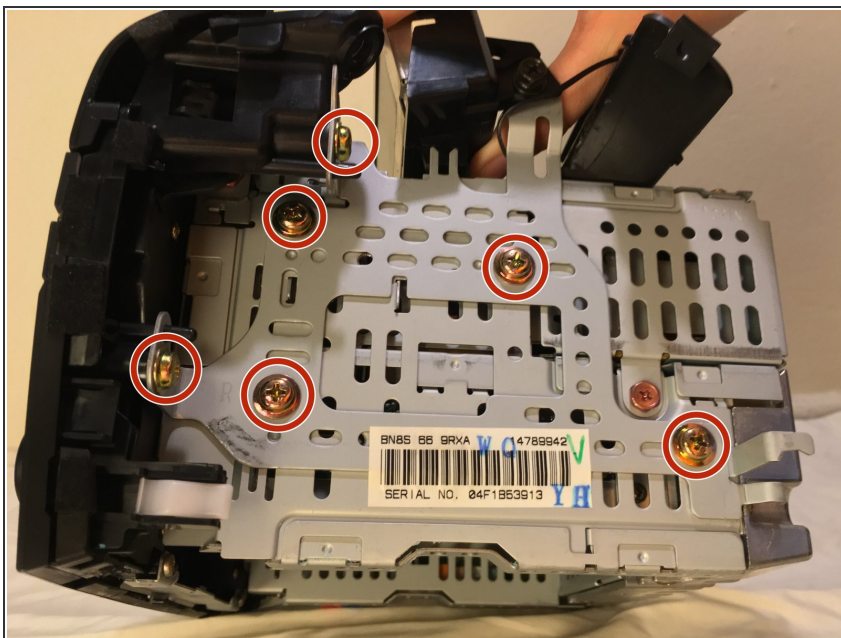
- [Phillips #1 Screwdriver](#) (1)
  - [Phillips #2 Screwdriver](#) (1)
-

## Step 1 — Stereo Unit



- This is the front panel of the 2004 Mazda 3 Stereo-CD Player. It's listed under the model number: BN85-66-9RXA.

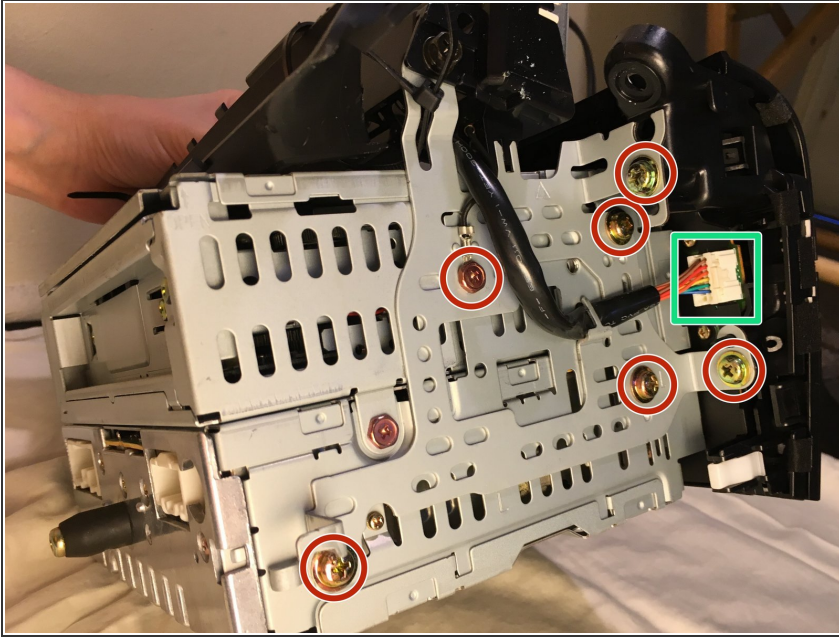
## Step 2



- On the right side of the unit, designated by the letter **R**, remove 6 screws using a Phillips #2 screwdriver.

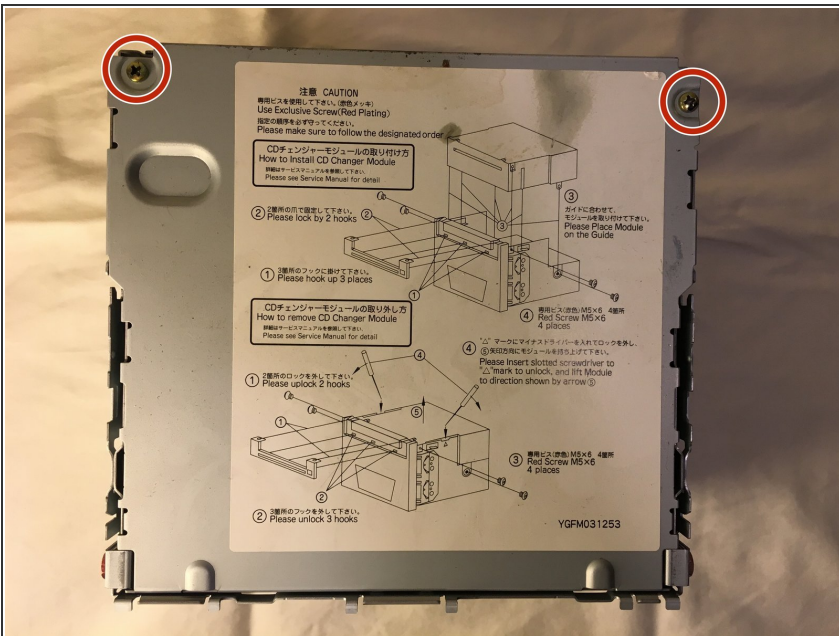


## Step 3



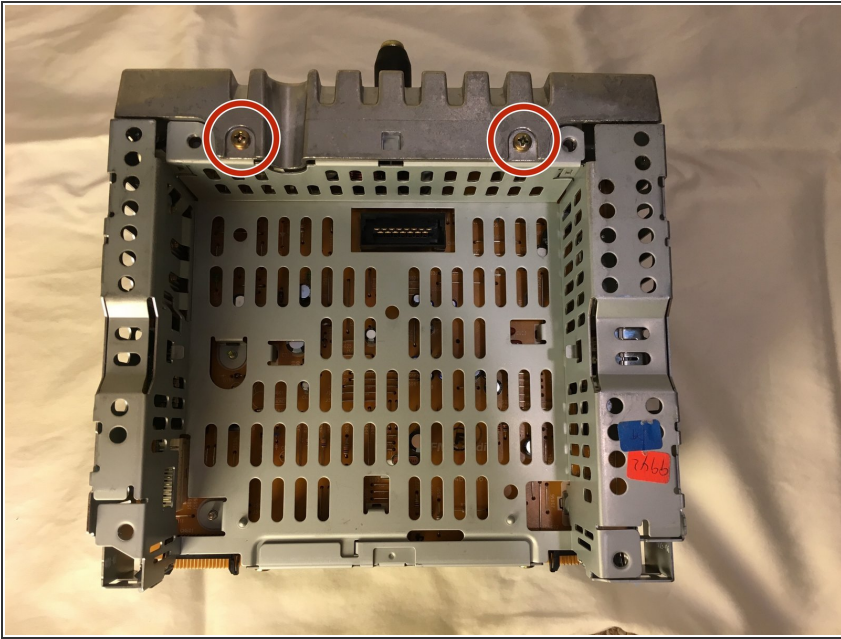
- On the left side of unit, designated by the letter **L**, remove 6 screws using a Phillips #2 screwdriver.
- Gently pull on the cable to disconnect it from the front panel.
- Now you can fully detach the front panel as well as the LCD display from the unit.

## Step 4



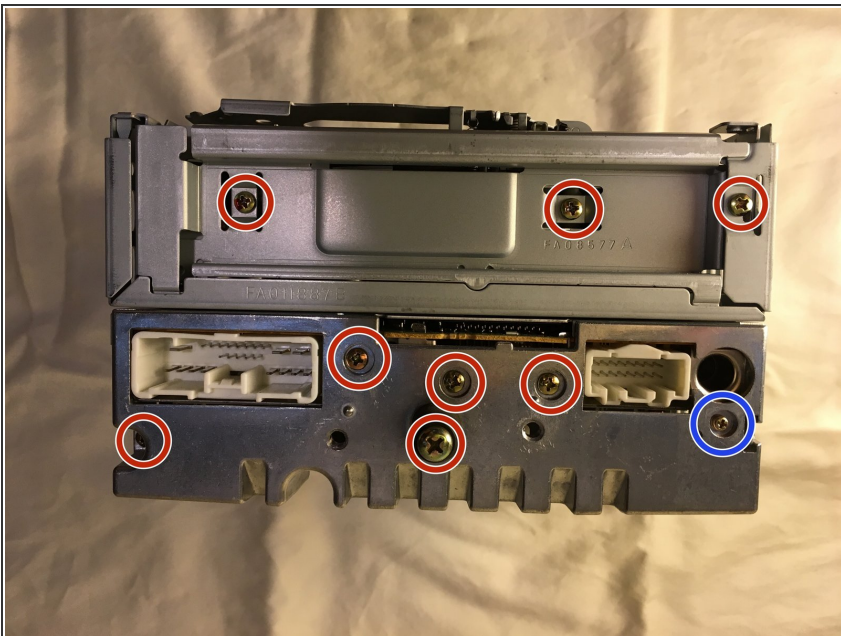
- On the top of the unit, remove 2 screws with a Phillips #2 screwdriver.
- Lift and remove the top case from the unit.

## Step 5



- On the bottom of the unit, remove 2 screws with the Phillips #2 screwdriver.

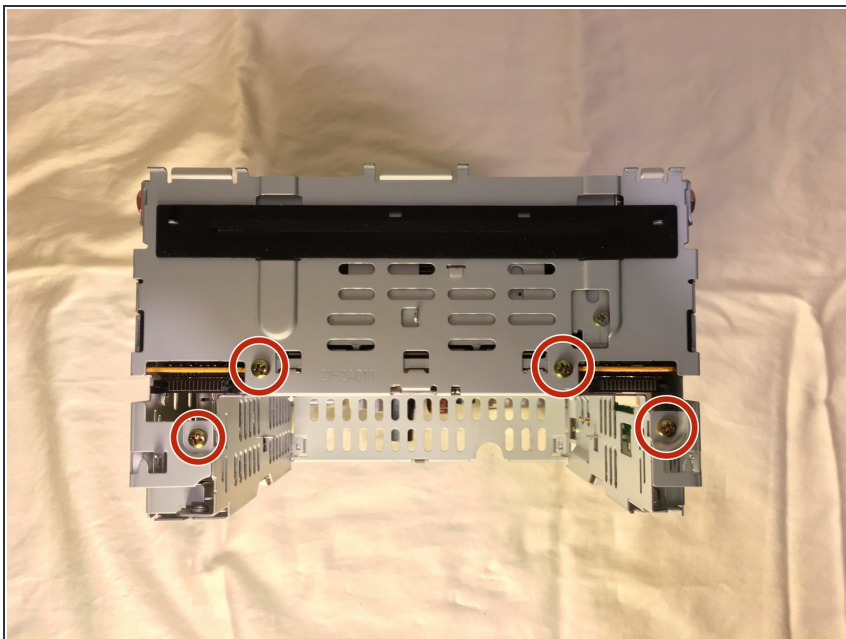
## Step 6



- On the back of the unit, remove 8 screws with a Phillips #2 screwdriver.
- Remove 1 screw with a Phillips #1 screwdriver.
- Pull off both the bottom and top metal plates.

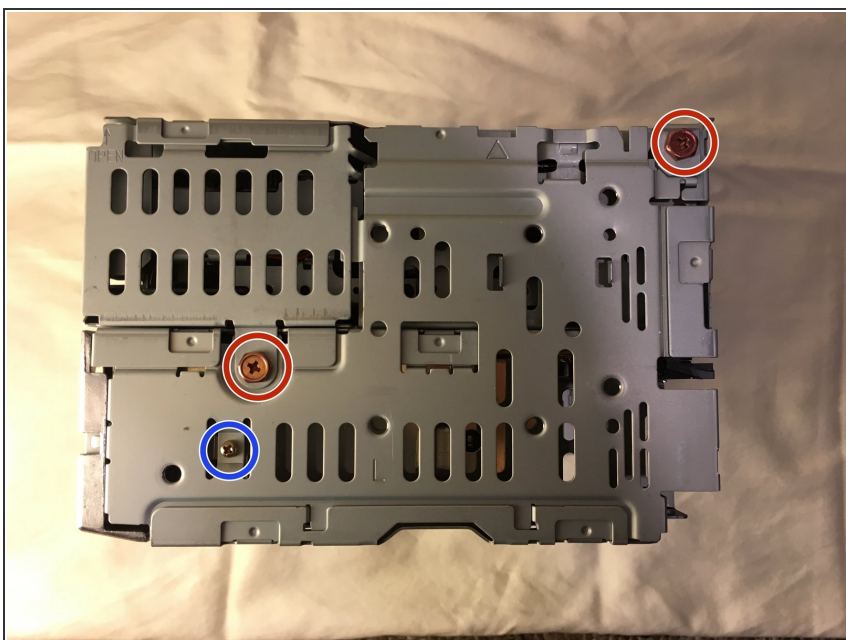


## Step 7



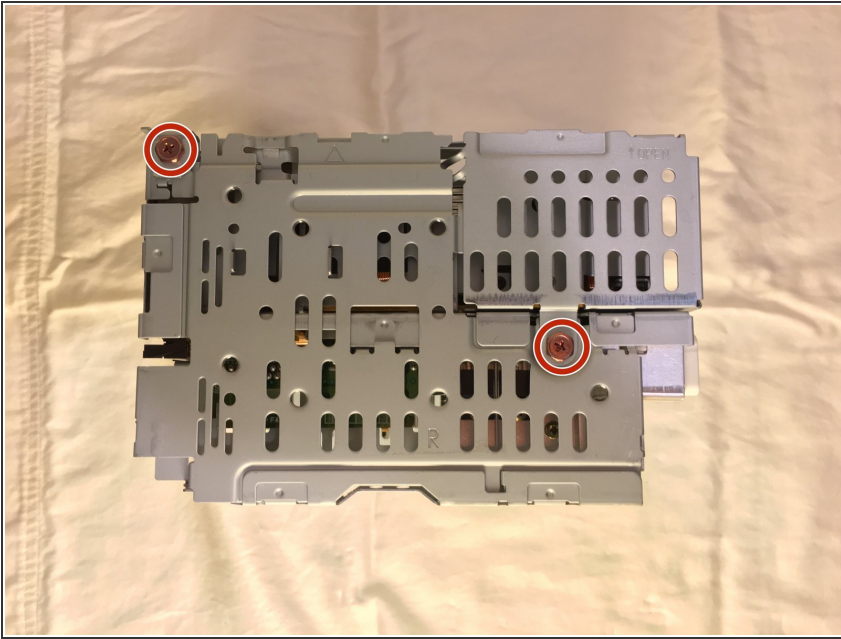
- On the front of the unit, remove 4 screws with a Phillips #2 screwdriver.

## Step 8



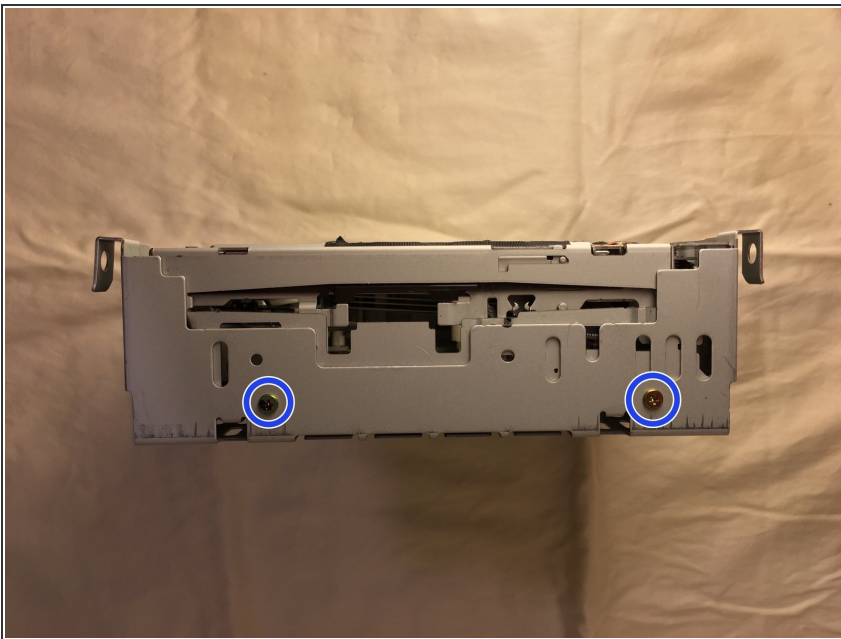
- On the left side of the unit, designated by the letter **L**, remove 2 screws with a Phillips #2 screwdriver.
- Remove 1 screw with a Phillips #1 screwdriver.

## Step 9



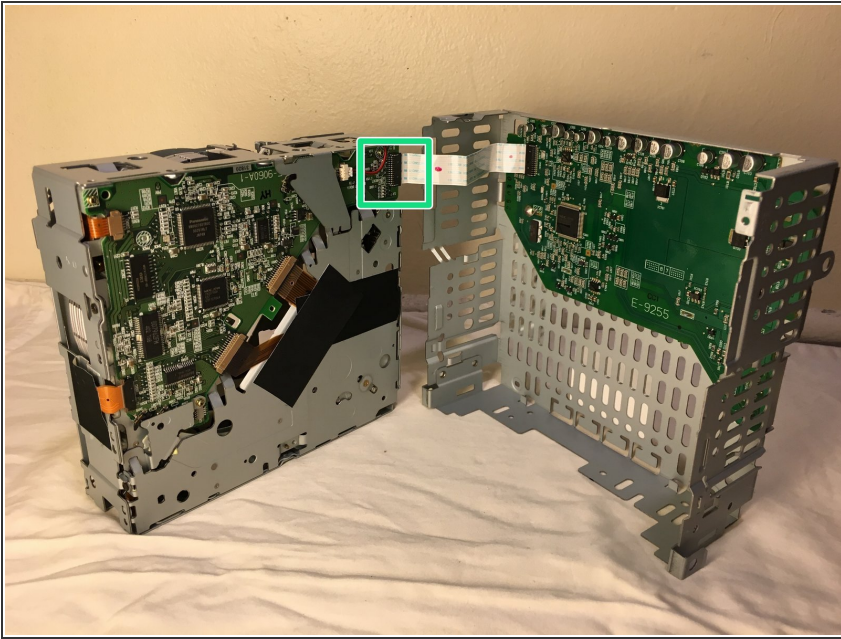
- On the right side of the unit, designated by the letter **R**, remove 2 screws with a Phillips #2 screwdriver.
- Pull the front metal plate off the unit. Then lift the CD drive from the lower metal case.

## Step 10 — CD Drive



- Remove 2 screws with a Phillips #1 screwdriver from the front of the CD drive.
- Very gently pull apart the top metal case from the CD drive without damaging the ribbon cable.

## Step 11



- Gently pull the ribbon cable from the connector on the CD drive logic board.

To reassemble your device, follow these instructions in reverse order.