



2009 Kia Sorento Door Handle Replacement

Use this guide to replace the door handle in your 2009 Kia Sorento.

Written By: Jack Wilson



INTRODUCTION

The door handle of a vehicle is prone to degrade overtime. This guide will help you with the car door replacement of a 2009 Kia Sorento. The tools used were a flat head screwdriver and socket wrench with a 10mm attachment.



TOOLS:

- [Flathead Screwdriver](#) (1)
- [10mm Socket](#) (1)
- [.25" Socket Wrench](#) (1)



PARTS:

- [Kia Sorento driver side door handle](#) (1)

Step 1 — Door Handle



- i** Before beginning this project be sure your window is rolled up or the glass will be in the way for later steps.
- Before you can start removing the side panel, the speaker on the driver side door must be removed. To do this, simply squeeze and it will pop out. There is a little wire that connects the speaker to the car. To detach it there is a little button that can be pushed and it will come loose.

Step 2



- Once the speaker is out, six screws need to be removed to allow the panel to detach from the door.
- i** The first four are on opposite ends of the door. One pair is near the door hinge and another pair is located next to the seam.

Step 3



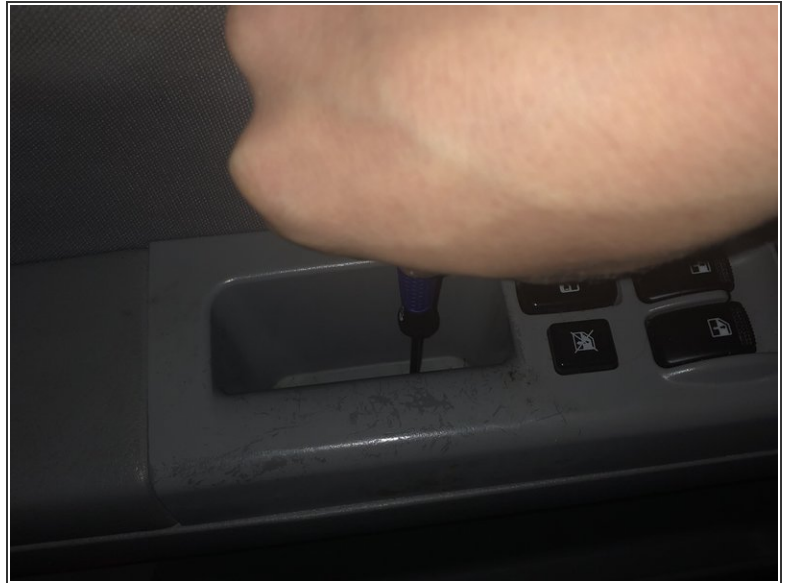
- Use a screwdriver to pry out the washers.

Step 4



- Remove the screw securing the door handle.
- Remove the door handle.

Step 5



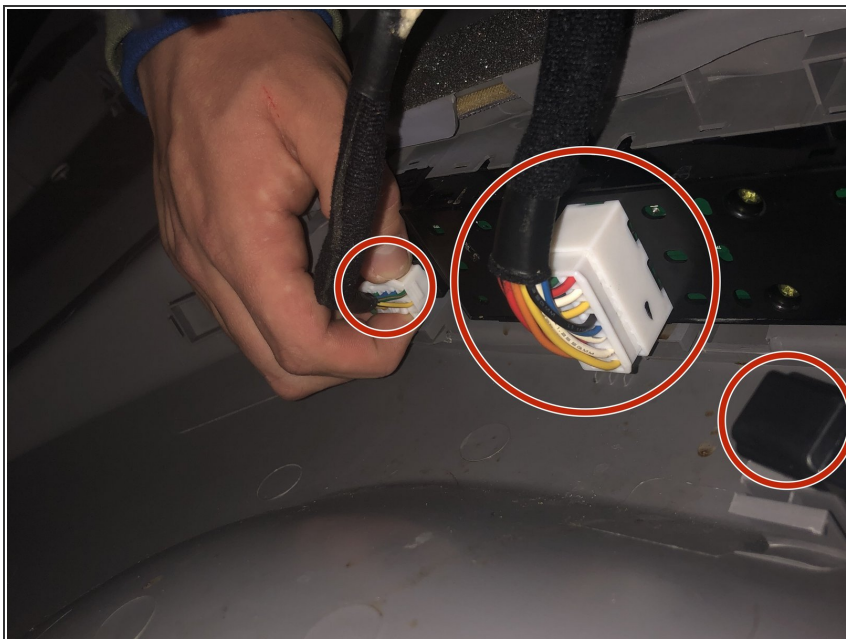
- Remove the final screw next to the lock and window buttons in a little hole.

Step 6



- Use a plastic opening tool or any other prying tool to remove the panel.

Step 7



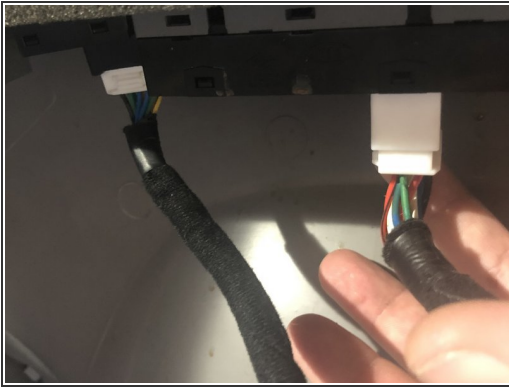
- Detach the wires that control the locks, windows, and lights in the car door.

Step 8



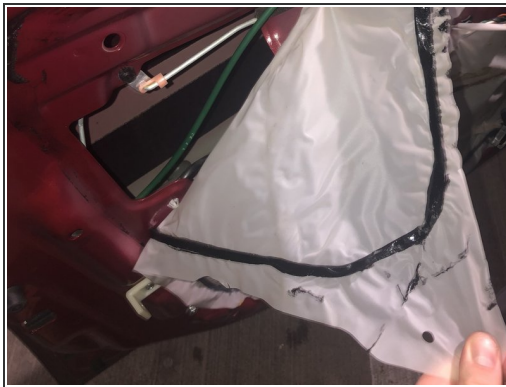
- Hold down the little button and pull the wire away from the car.

Step 9



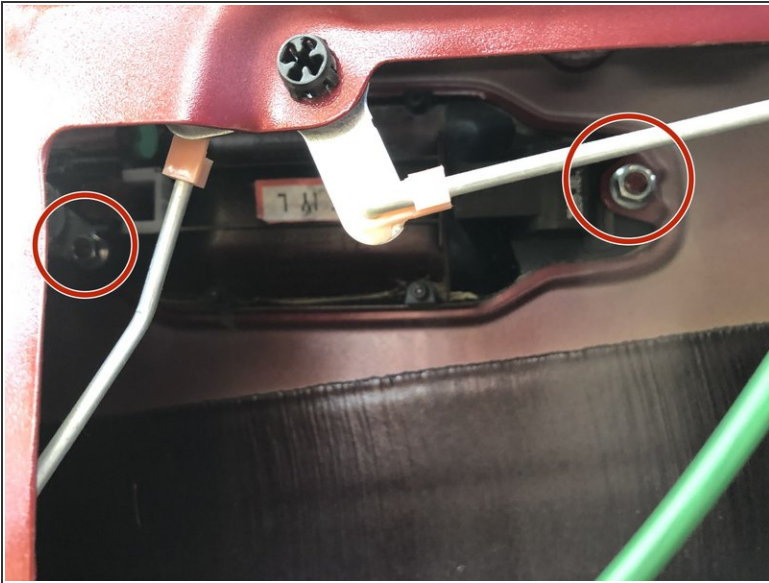
- Detach the two white blocks of wires.

Step 10



- After all the wires are detached and the door panel is set to the side, pull back the plastic seal to gain access to the bolts.
- ⓘ You don't need to completely remove it, just enough to fit your hand inside to unscrew the bolts.

Step 11



- There are two bolts behind the plastic you just pulled back and one to the outer side of the car door behind a little plastic cover.

Step 12



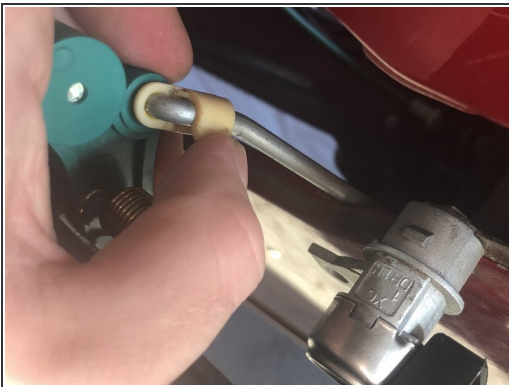
- Use a socket wrench with a 10mm attachment to loosen the bolts. To remove the bolts on the inside of the door, just loosen the bolts with the socket wrench and then use your hands to remove it completely.

Step 13



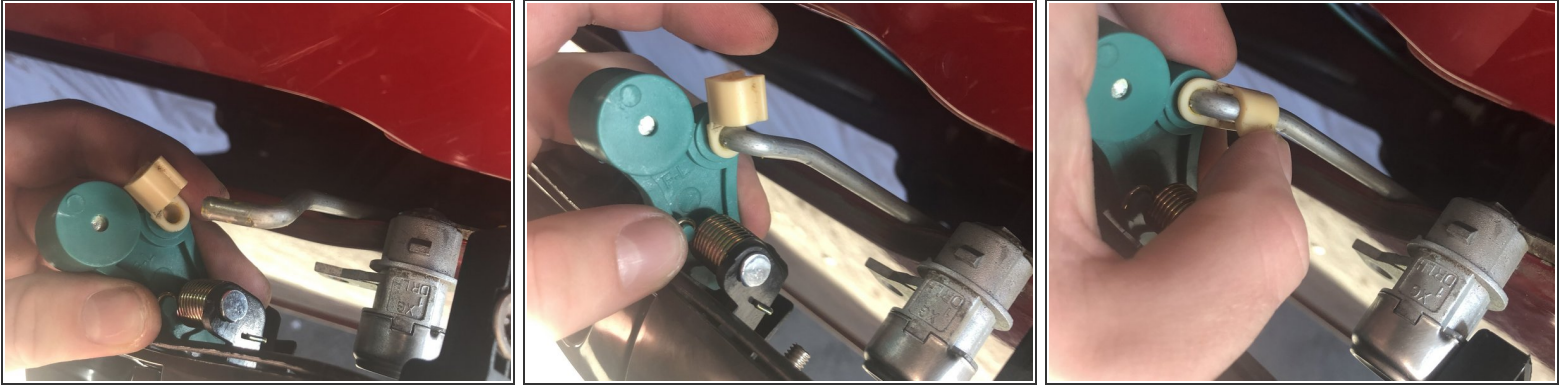
- Remove the door handle from the vehicle.

Step 14



- Push the semi-circle piece away from the metal rod and remove the metal rod.

Step 15



- Now that the old door handle is fully detached from the car you can now put in your replacement part.

To reassemble your device, follow these instructions in reverse order.