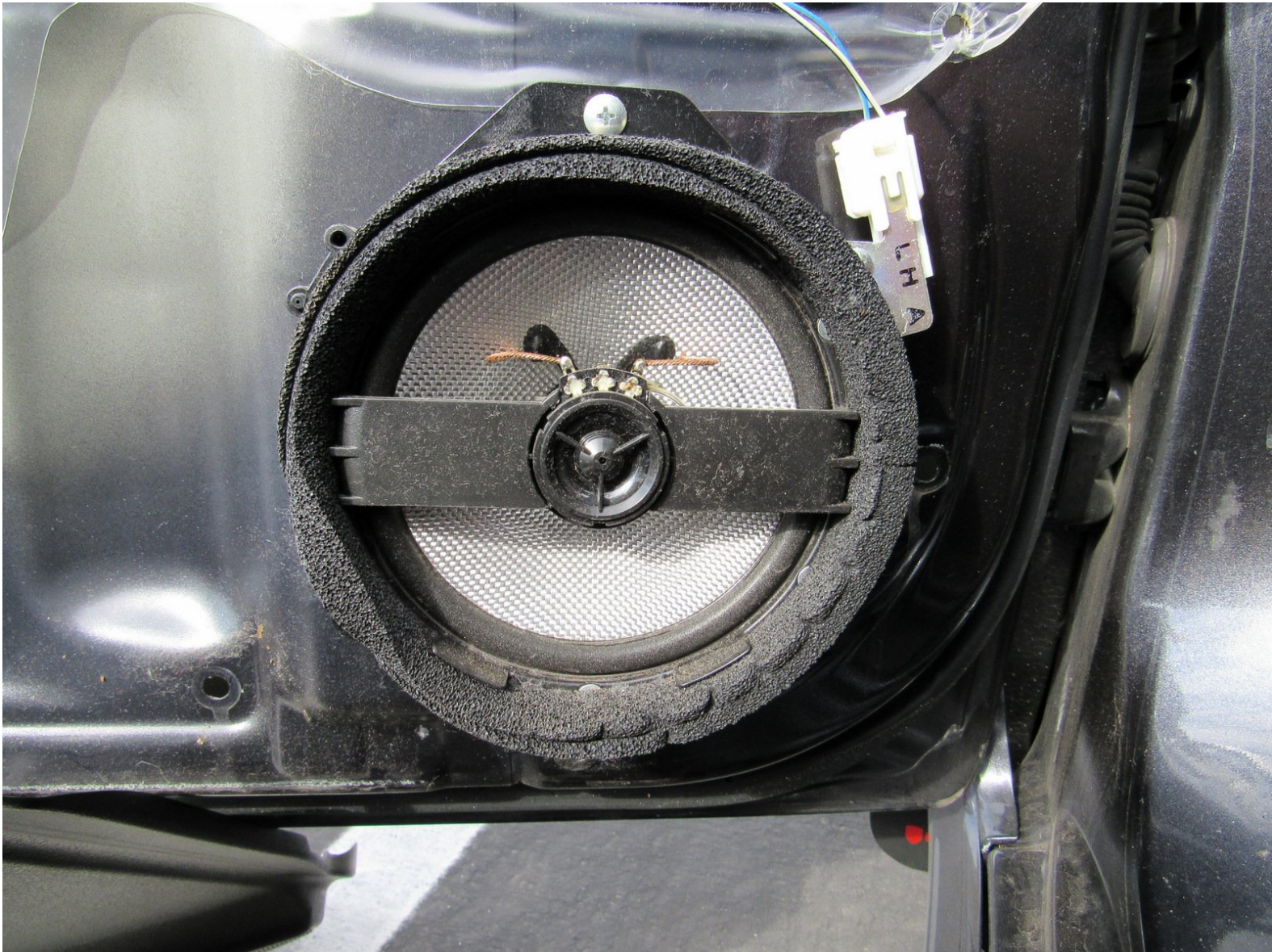




# 2009 Subaru Impreza WRX Front Speaker Replacement

Replaces front speaker of 2009 Subaru Impreza WRX.

Written By: Jared Spadaro



## INTRODUCTION

This guide shows how to replace the front speaker of the 2009 Subaru Impreza WRX. It can be used to replace a broken speaker, or upgrade an old speaker with a better one.



### TOOLS:

- [Phillips #0 Screwdriver](#) (1)
- [Flathead Screwdriver](#) (1)
- [Small Needle Nose Pliers](#) (1)



### PARTS:

- [Replacement speaker](#) (1)



## Step 1 — Front Door Panel



- Pry up the plastic tab from inside the handle located on the front door armrest.

## Step 2



- Pry up the plastic tab from inside the door handle housing.

### Step 3



- Use your Phillips screwdriver to unscrew the 8x3/4" Phillips screw by the upper door handle.
- Unscrew the second 8x3/4" Phillips screw located inside the lower door handle on the door's armrest.



## Step 4



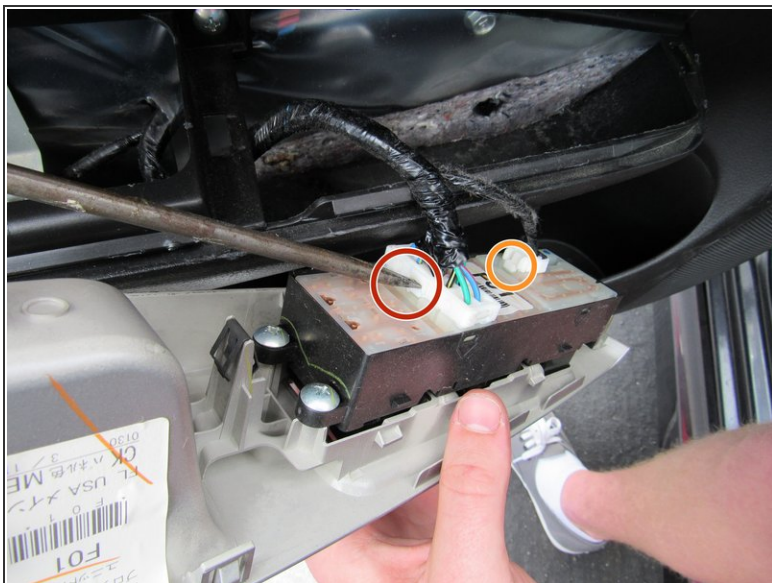
- Pry off the entire door speaker and its housing located inside of the mirror.
- Using your flathead screwdriver, pry up the latch connecting the two white cords and disconnect the speaker.

## Step 5



- Using your flathead screwdriver, pry the middle plastic door piece away from the armrest.

## Step 6



- Using your flathead screwdriver, press the white tab on the side of the larger cord bundle connecting the assembly.
  - The larger cord bundle now can be pulled out.
  - Press the white tab on the smaller cord bundle and disconnect the smaller cord bundle from the assembly.
- i** Take note of the two screws that are now visible in the middle of the door panel.



## Step 7



- Unscrew both 8x3/4" Phillips screws from the middle of the door panel using your Phillips screwdriver.

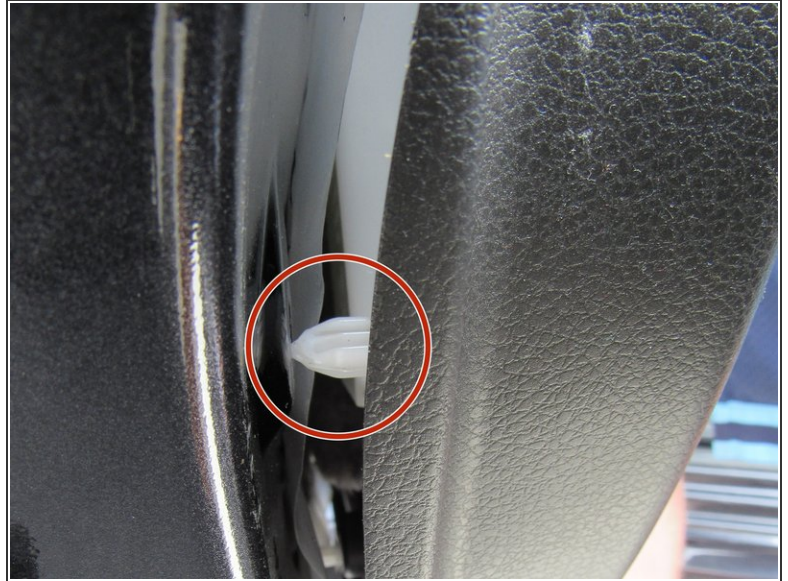
## Step 8



- Pry the left side of the door panel away from the door using a flathead screwdriver.
  - It may be easiest to start by prying away where the red circle is located.

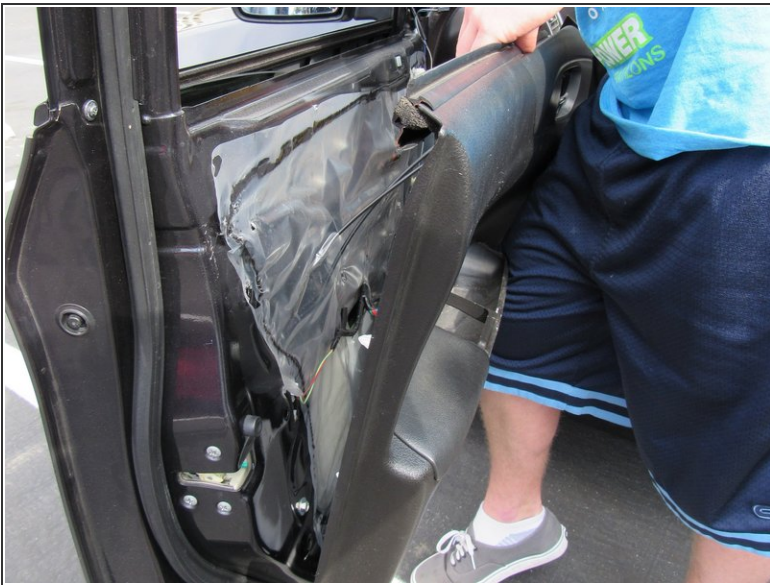


## Step 9



- Using your hands now, pry the door panel away from the door.
- You will hear a series of pops when the white tabs disconnect from the door.

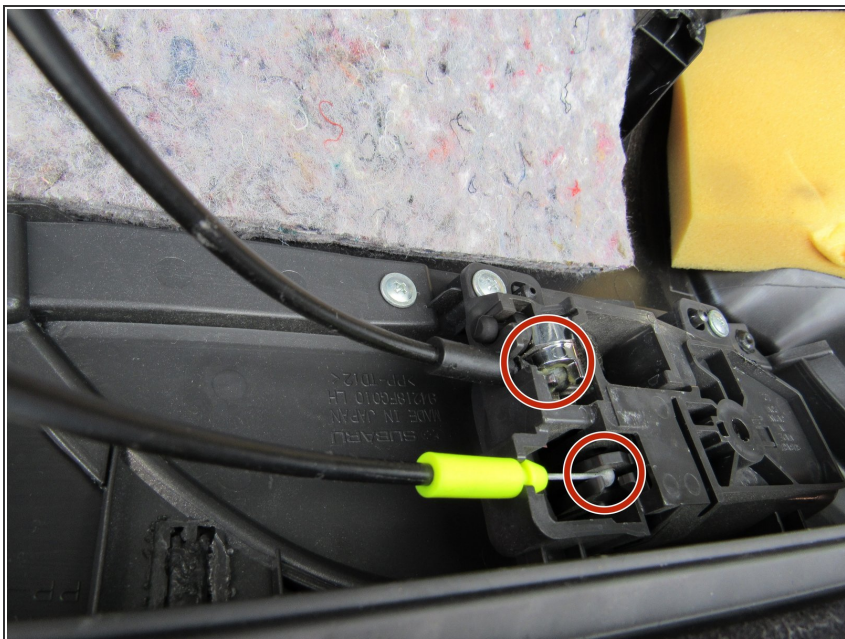
## Step 10



- Finish pulling the door off of the frame, now that all the clips have been disconnected.
- ⚠ Pull the door from the top, not the bottom or sides.

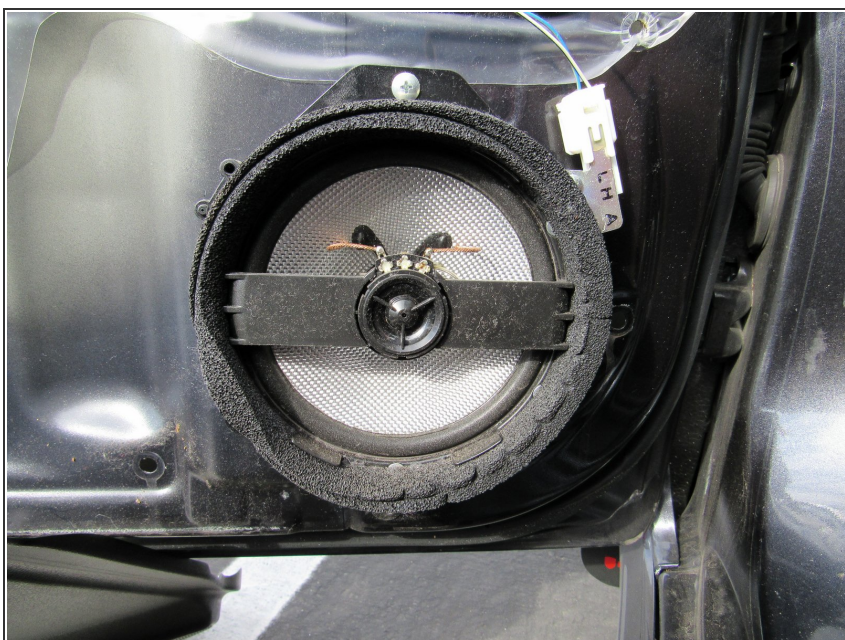


## Step 11



- Disconnect the final two power window cables that connect the door panel to the door frame by pulling both out of their sockets.
- Congratulations! You are now done.

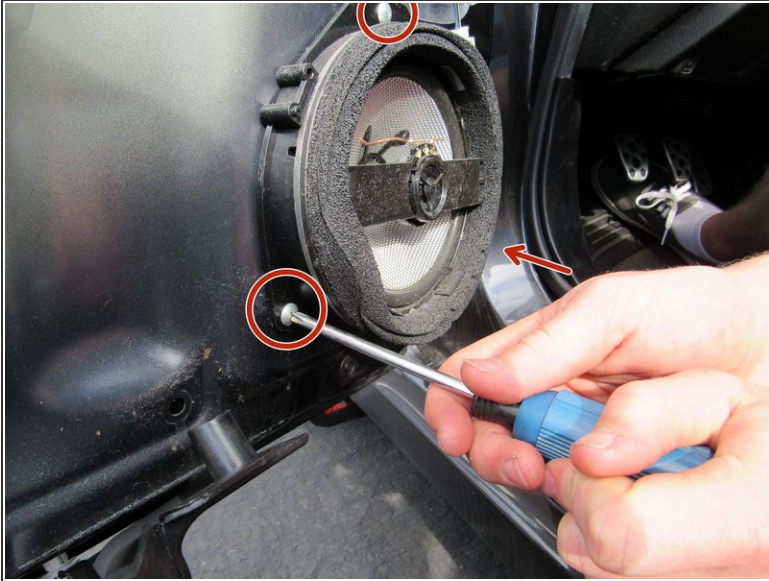
## Step 12 — Front Speaker



- This is how the speaker will look when the inside of the door is removed (refer to front door removal guide for more info).

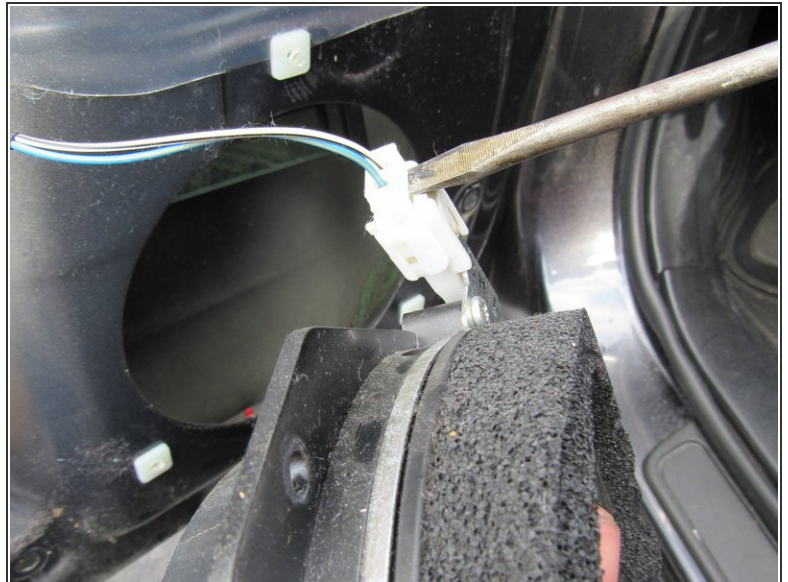


## Step 13



- There will be three 8x3/4" Phillips screws (the third screw is indicated by the arrow; you can't see the screw in the picture) keeping the speaker in place. Use a #0 Phillips screwdriver to remove them.

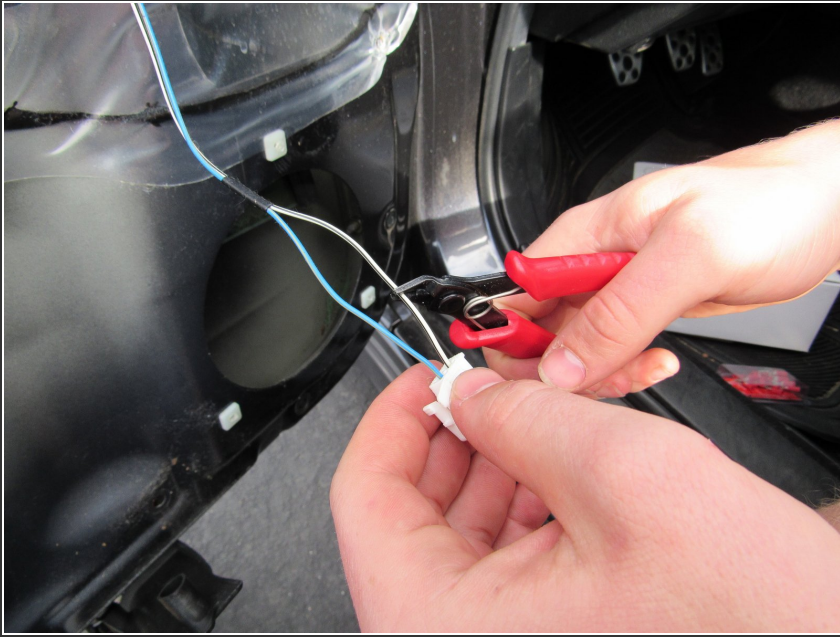
## Step 14



- There will be a plastic adapter connecting wires to the speaker. To separate the adapter from the speaker, use a flathead screwdriver to pry the adapter off.

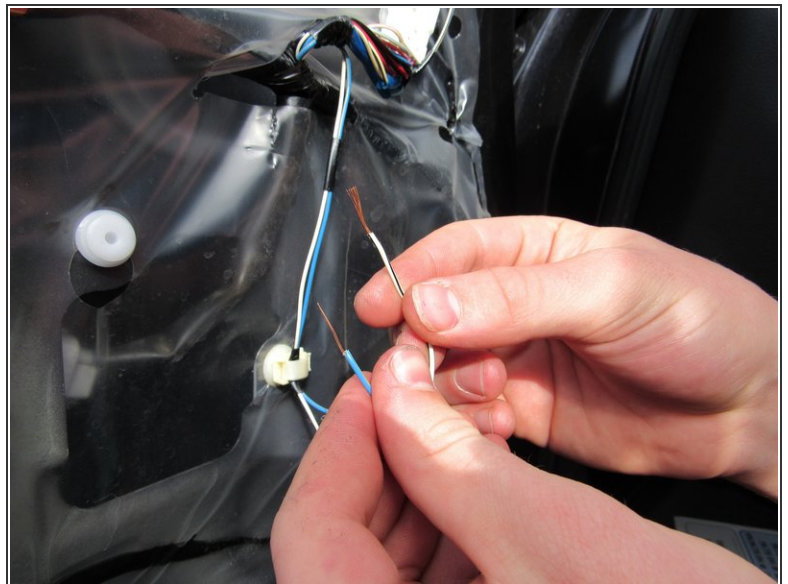
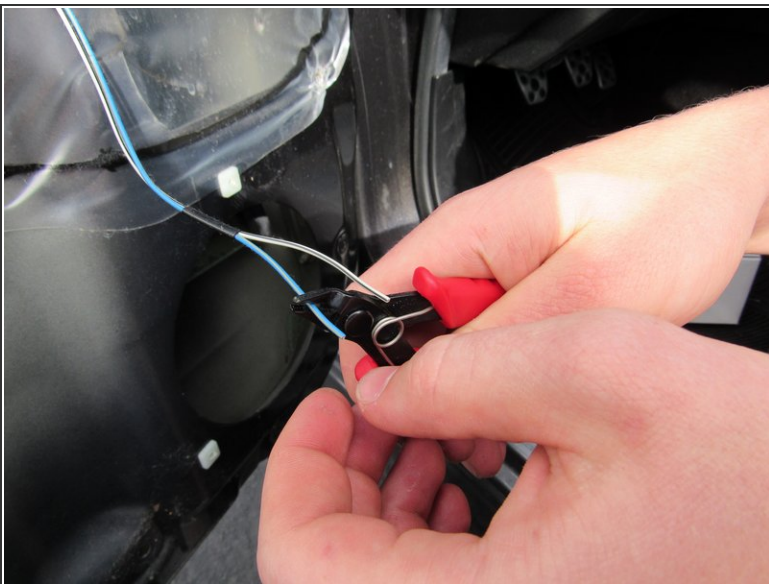


## Step 15



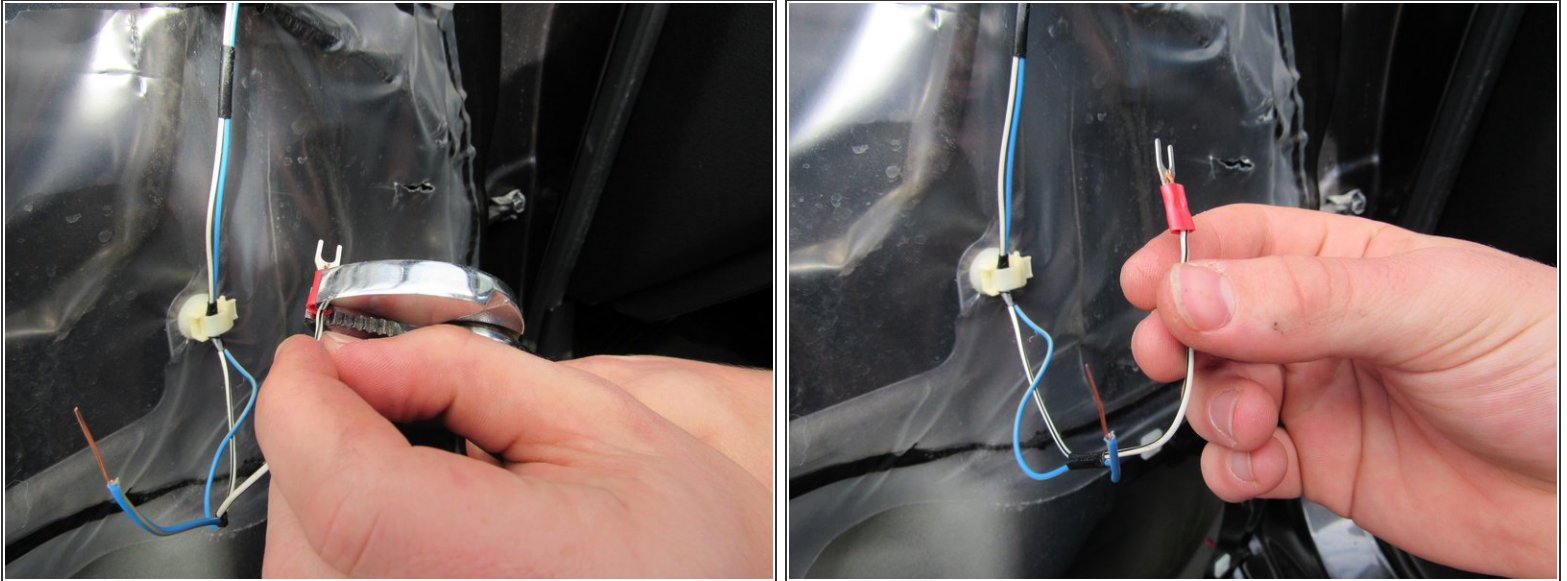
- Remove the plastic adapter from the wiring using wire cutters as shown.

## Step 16



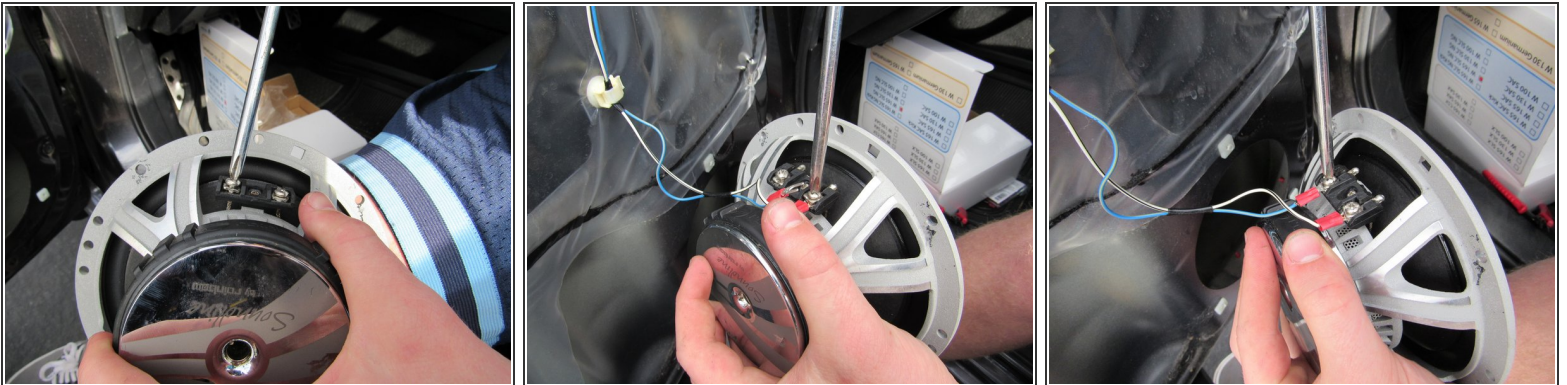
- Using wire strippers, strip the two wires shown (blue and white, respectively) at about 1 inch from the end.

## Step 17



- Using pliers, attach a special adapter piece to both wires as shown. Simply insert the wire into the plastic cavity and apply pressure.

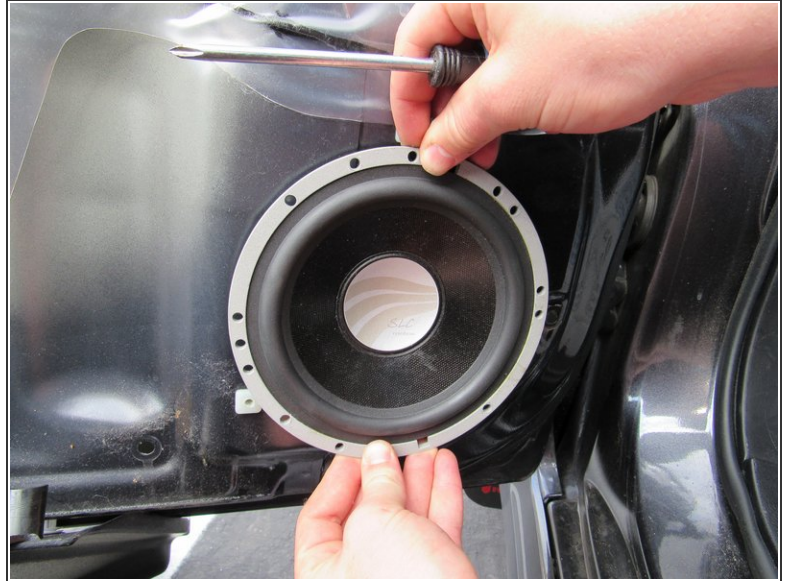
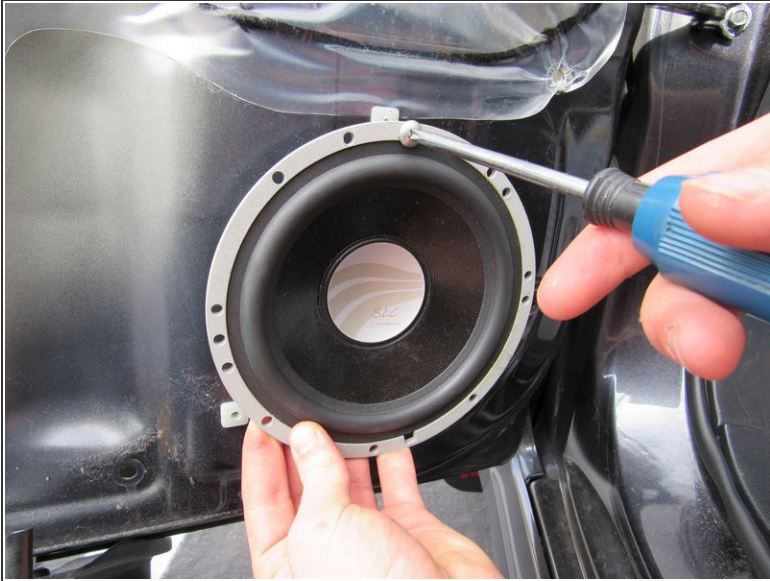
## Step 18



- Locate the part of your new speaker which has two 8x3/4" Phillips screws in line. Unscrew these screws slightly to allow the adapter pieces to fit under them, then screw them back in to secure the wires.



## Step 19



- The final step is to place the new speaker, and tighten the same three screws as before to secure it.
- ⓘ If you're having problems with your new speaker, refer to the troubleshooting guide [here](#).

To reassemble your device, follow these instructions in reverse order.