



# 2009 Subaru Impreza WRX Rear Door Panel Replacement

This guide demonstrates how to replace the rear door panel of the 2009 Subaru Impreza WRX.

Written By: Joseph Coplon



## INTRODUCTION

Replacing the rear door panel is necessary for replacing the rear door speaker. This guide will show you how to replace the rear door panel if it is broken, or simply how to remove the panel in order to access the speaker.



### TOOLS:

- [Flathead Screwdriver](#) (1)
  - [Phillips #0 Screwdriver](#) (1)
-

## Step 1 — Rear Door Panel



- Pry off the plastic tab inside the rear door handle.

## Step 2



- Use the Phillips screwdriver to unscrew the 8x3/4" Phillips screw inside the door handle.



### Step 3



- Use a flathead screwdriver to pry up the plastic tab inside the rear door armrest.

### Step 4



- Use the Phillips screwdriver to unscrew the 8x3/4" Phillips screw inside the armrest.

## Step 5



- Use flathead to pry off the upper panel located at the top of the rear door panel.

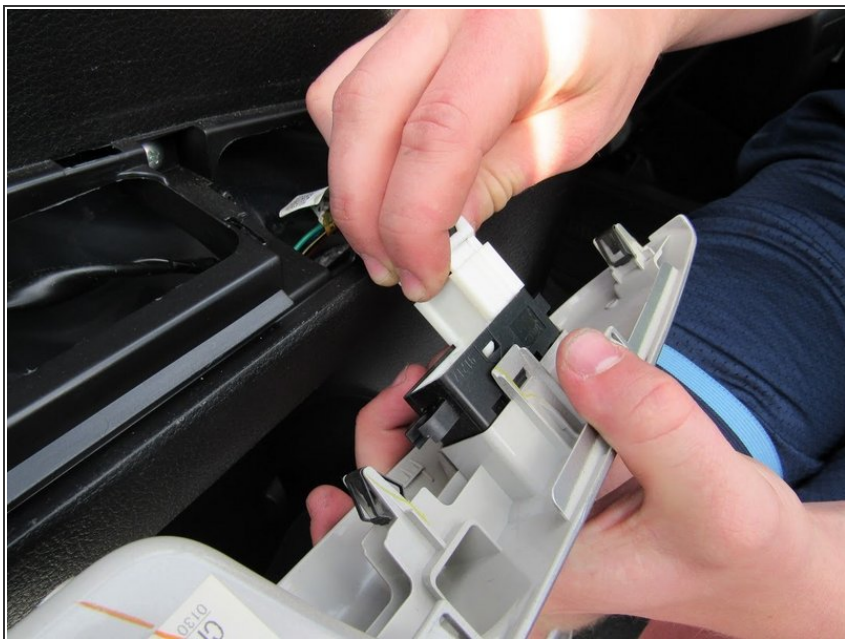
## Step 6



- Use the flathead screwdriver to pry off and remove the panel over the door handle.

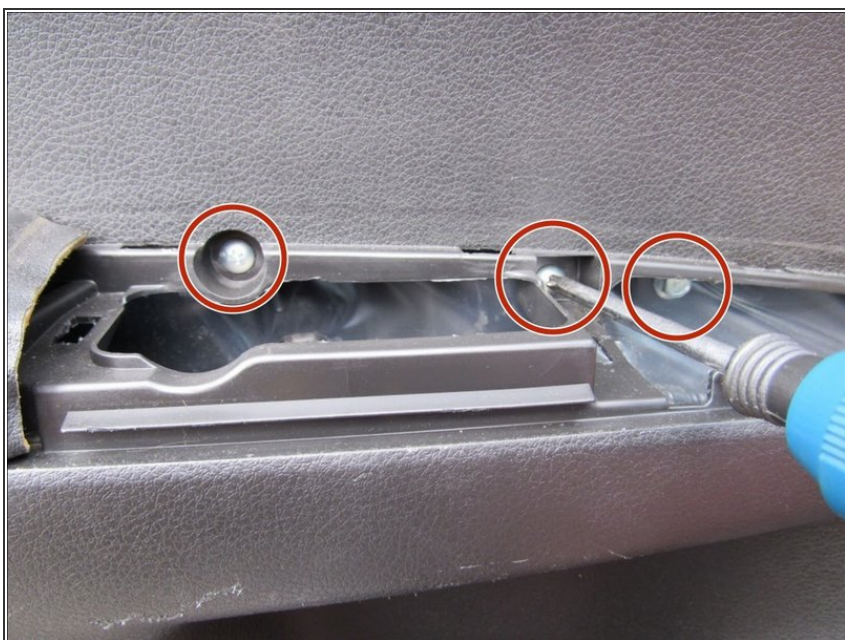


## Step 7



- Remove the bundle of wires from the panel by pressing the tabs on the sides of the large white plastic connector.

## Step 8



- Use the Phillips screwdriver to unscrew the 8x3/4" screws behind the door handle panel that was just removed.

## Step 9



- Use the flathead screwdriver to pry off the door panel, starting from the outside edge of the door.

## Step 10



- Use your hands to pull off and remove the door panel from the frame.

## Step 11



- Using your hands, remove the two remaining wires connecting the door panel to the frame.
- The door panel is now completely removed from the frame.

To reassemble your device, follow these instructions in reverse order.