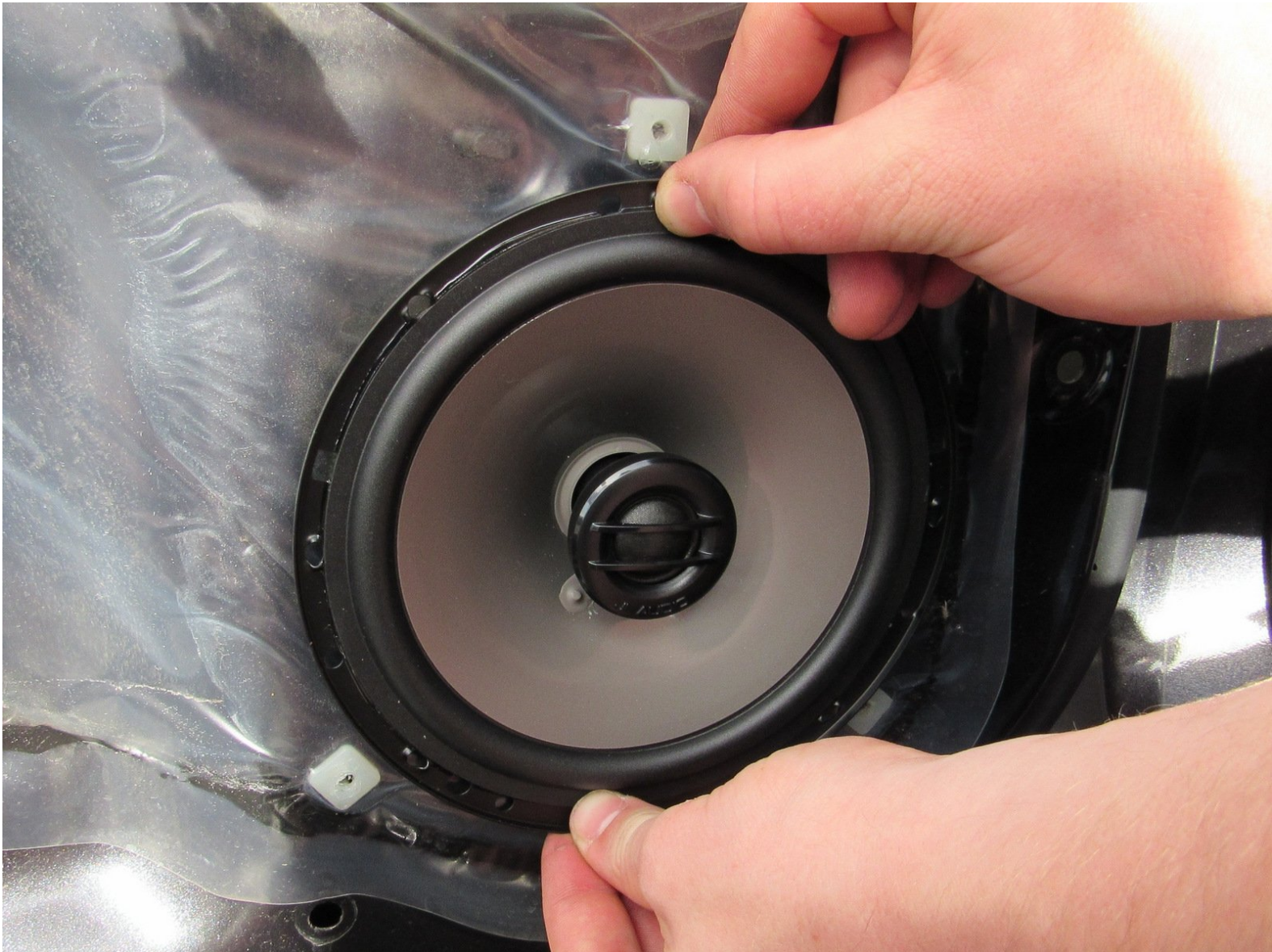




2009 Subaru Impreza WRX Rear Speaker Replacement

This is a replacement guide for the speaker in the rear door.

Written By: Eve Wassenaar



INTRODUCTION

This guide demonstrates how to replace the rear door speakers. This guide can be used for replacing a broken speaker, or upgrading the old speaker with a better one.



TOOLS:

- [Wire Stripper](#) (1)
- [Phillips #2 Screwdriver](#) (1)
- [Small Needle Nose Pliers](#) (1)



PARTS:

- [Replacement speaker](#) (1)

Step 1 — Rear Door Panel



- Pry off the plastic tab inside the rear door handle.

Step 2



- Use the Phillips screwdriver to unscrew the 8x3/4" Phillips screw inside the door handle.

Step 3



- Use a flathead screwdriver to pry up the plastic tab inside the rear door armrest.

Step 4



- Use the Phillips screwdriver to unscrew the 8x3/4" Phillips screw inside the armrest.

Step 5



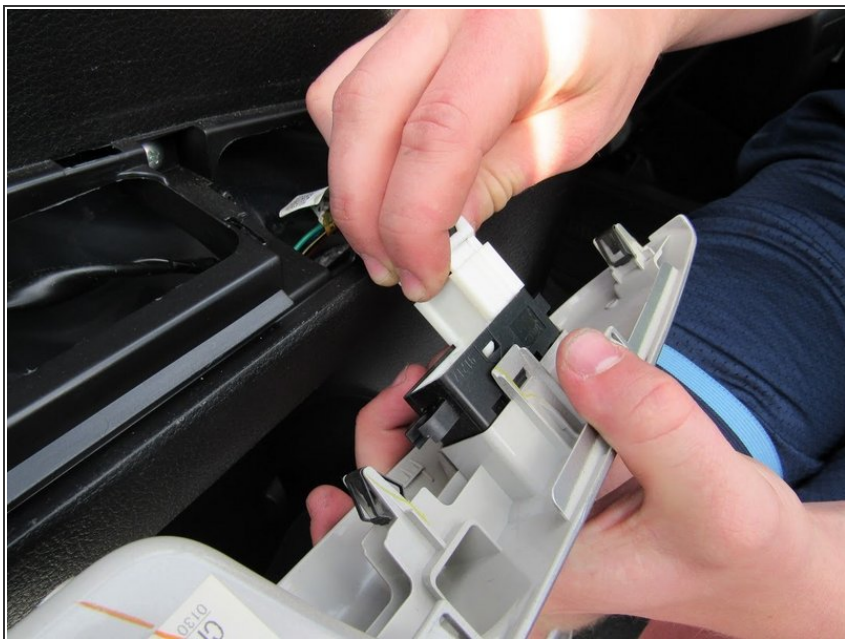
- Use flathead to pry off the upper panel located at the top of the rear door panel.

Step 6



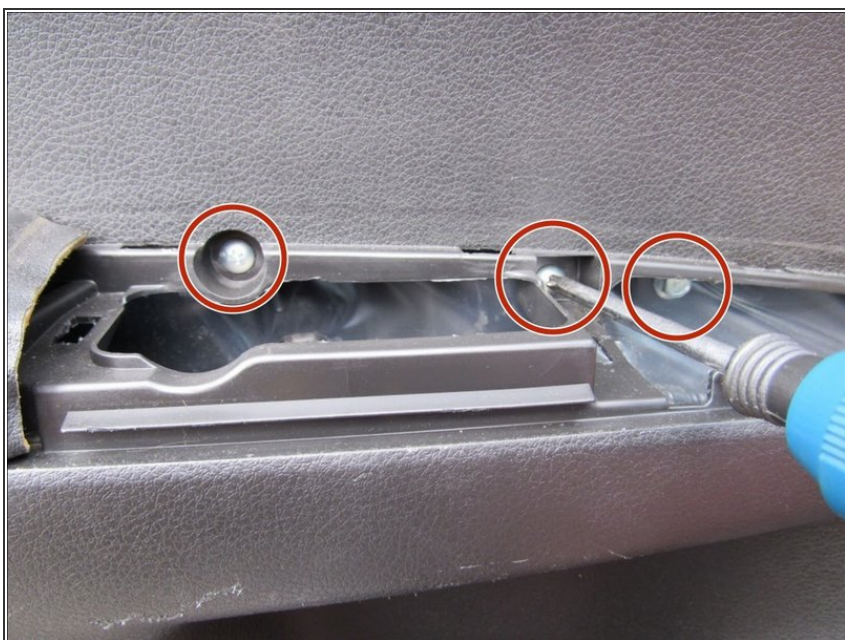
- Use the flathead screwdriver to pry off and remove the panel over the door handle.

Step 7



- Remove the bundle of wires from the panel by pressing the tabs on the sides of the large white plastic connector.

Step 8



- Use the Phillips screwdriver to unscrew the 8x3/4" screws behind the door handle panel that was just removed.

Step 9



- Use the flathead screwdriver to pry off the door panel, starting from the outside edge of the door.

Step 10



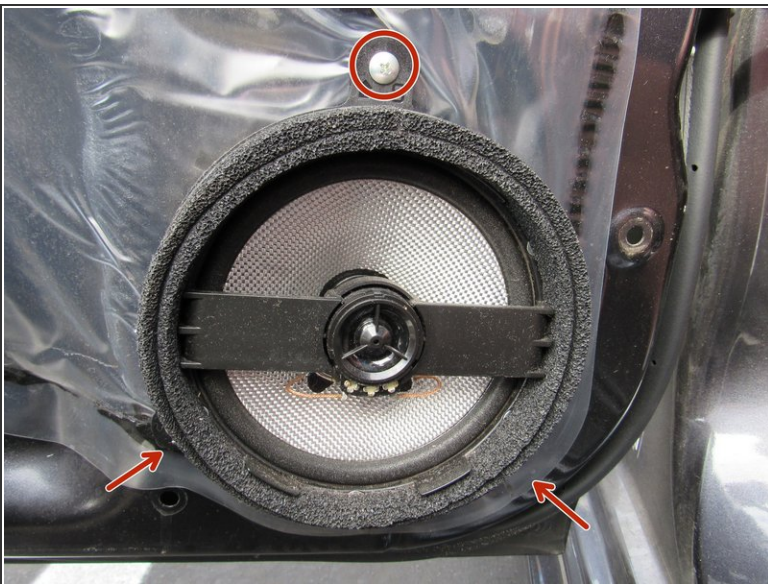
- Use your hands to pull off and remove the door panel from the frame.

Step 11



- Using your hands, remove the two remaining wires connecting the door panel to the frame.
- The door panel is now completely removed from the frame.

Step 12 — Rear Speaker



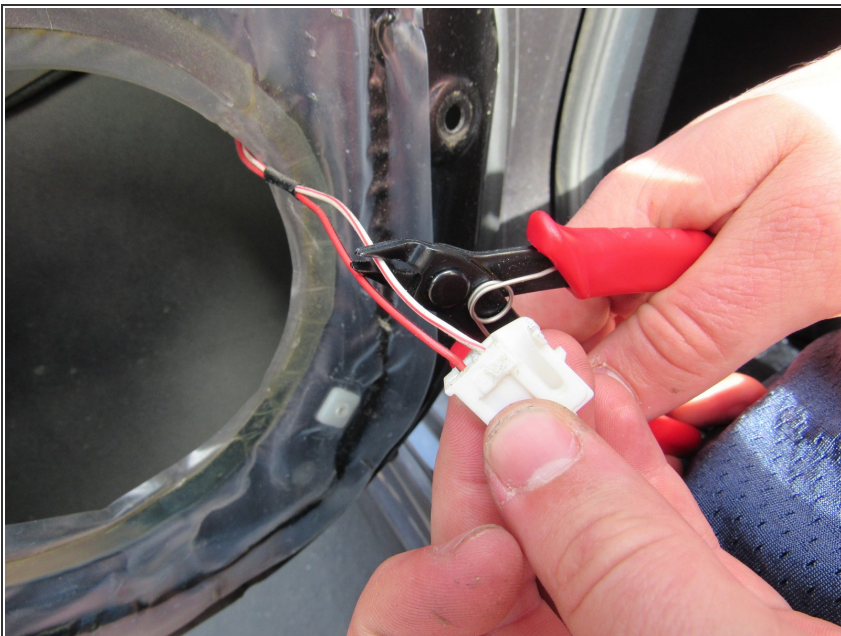
- Locate and remove all three Phillips 8x3/4" screws. There's one on top and two on the sides where the arrows are pointing.

Step 13



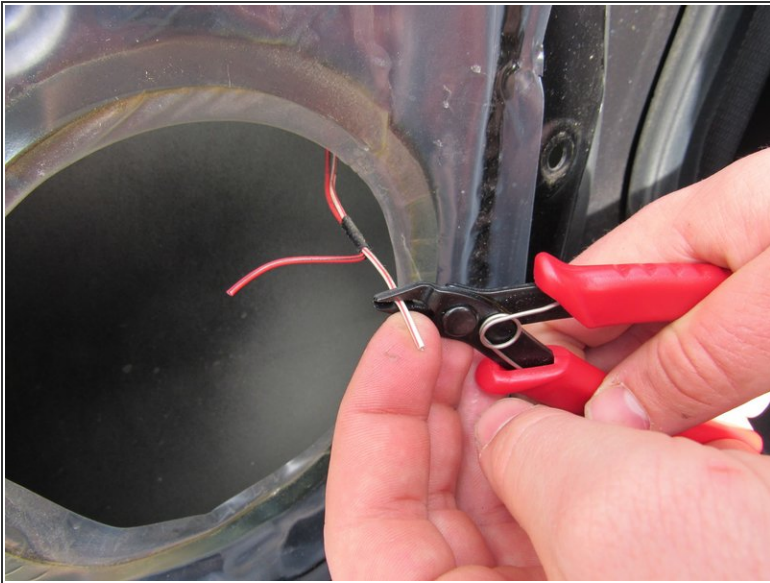
- Once the screws are removed, the speaker will easily pop out of the door revealing two wires attached to the speaker with a white clip. Remove this white clip by simply squeezing one of the tabs that lock it in place.

Step 14



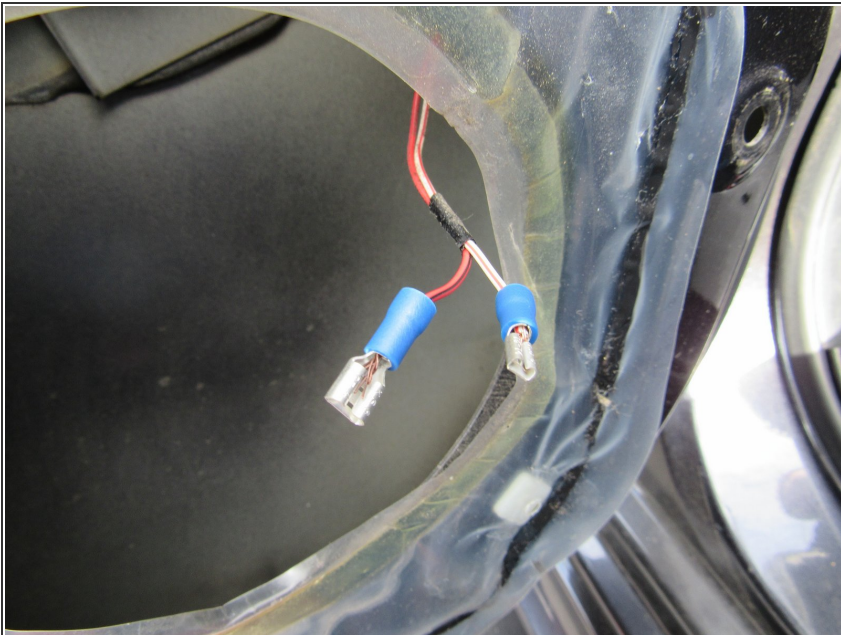
- Once the clip is removed from the speaker, you will want to then cut the wires from the white clip using a wire cutters.

Step 15



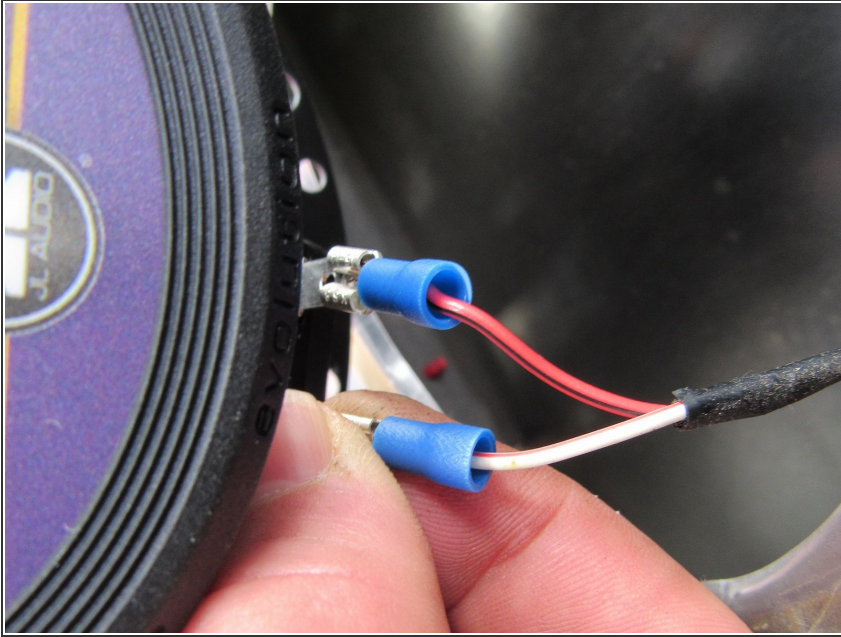
- Once the white clip is removed from the wires, you will then want to strip about 0.5" of plastic from the wire revealing bare copper wire.

Step 16



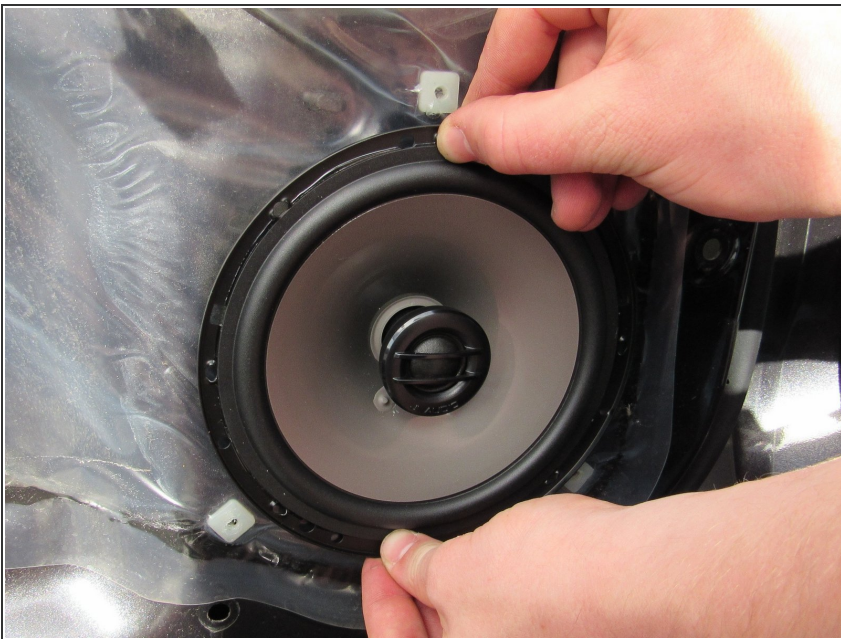
- Once the wires are cut, you will then want to add separate clips on the end of the wires by placing the clips on the wires, and then using a pliers, squeeze the plastic to crimp the clip securely on the wire.

Step 17



- Once the new clips are now on the separate wires, place these clips into the back of your new speaker.

Step 18



- Insert your new speaker where the old speaker once was.
- Use the same three screws that you removed in the first step to secure your new speaker in the door.
- ❗ If you're having problems with your new speaker, refer to the troubleshooting guide [here](#).
- Congratulations! You are now done!

To reassemble your device, follow these instructions in reverse order.