



# 2010 Telstra t-box Teardown

Written By: Bryn Trainor



---

## INTRODUCTION

Hey guys, instead of asking questions, im gonna solve a question with this guide.

The Telstra t-box was released in 2010 and was discontinued in 2018.

This is the first ever guide made for this item on iFixit, i might make more if i want to.

Anyways, here' s a complete teardown on the Telstra T-box:



### TOOLS:

- [Phillips #0 Screwdriver](#) (1)
-

## Step 1 — Preparation



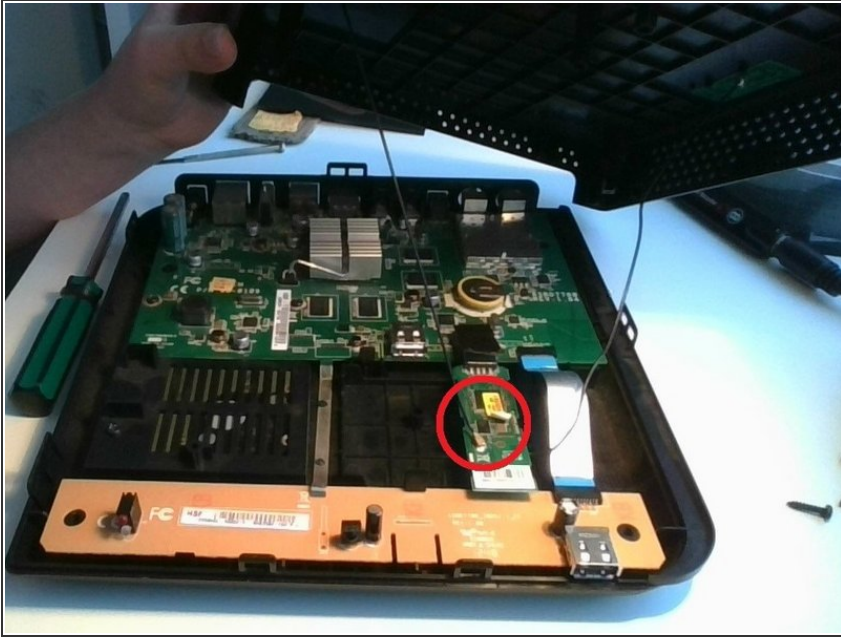
- Place your system on a flat surface and make sure all cables are disconnected from the system before dissassembly

## Step 2 — Remove case from bottom



- Flip the device over and remove the hard drive cover (I dont have a hard drive cover on my t-box)
- Peel off the warranty sticker and remove the 4 screws

## Step 3 — Opening it up



- Pull the casing off being careful of the cables connected to the case.
- carefully disconnect those cables and proceed

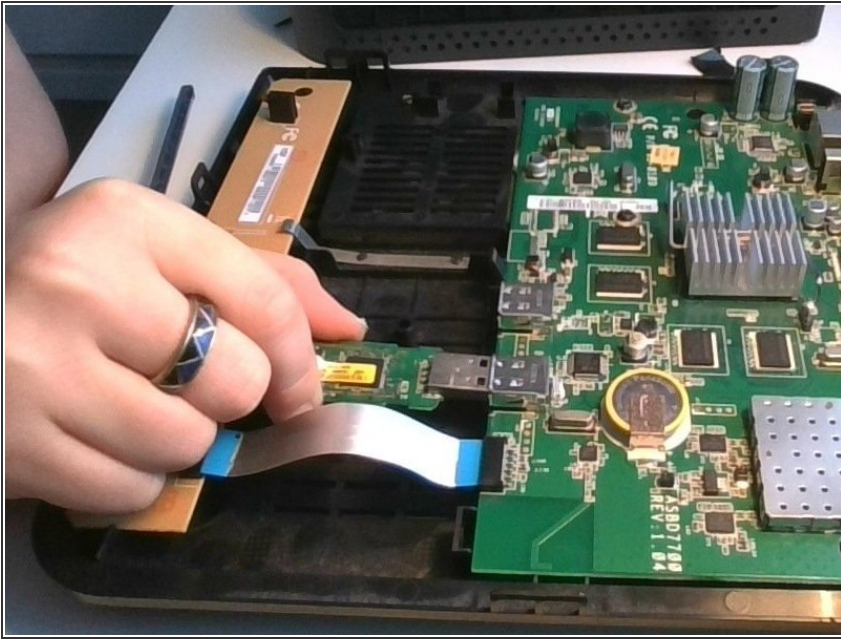
## Step 4 — Getting inside



- After disconnecting the cables, you can remove the top half of the outer case.

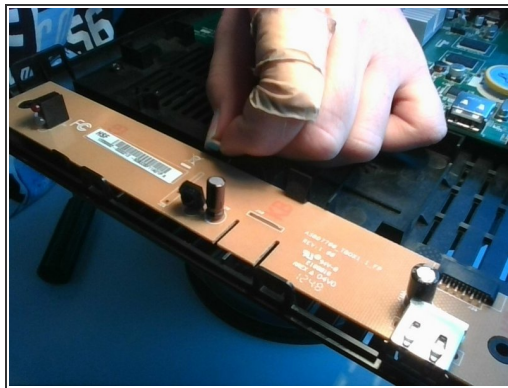
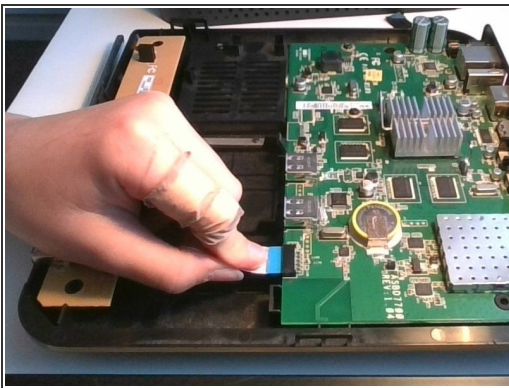


## Step 5 — Disconnecting the USB wifi adapter



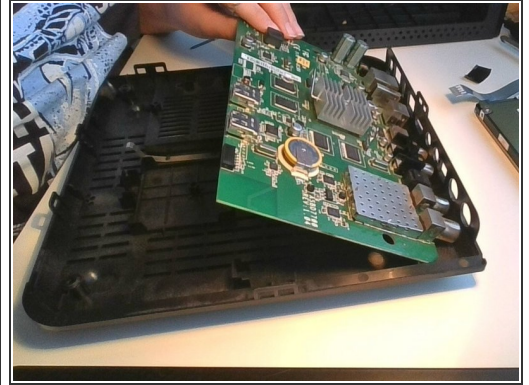
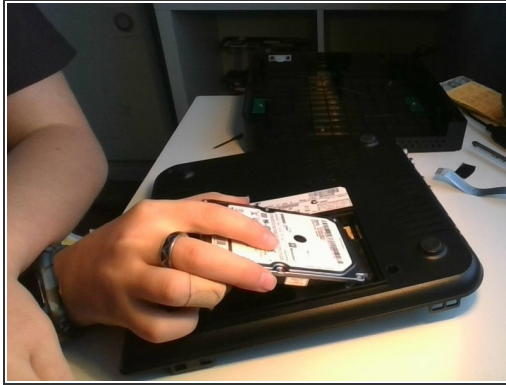
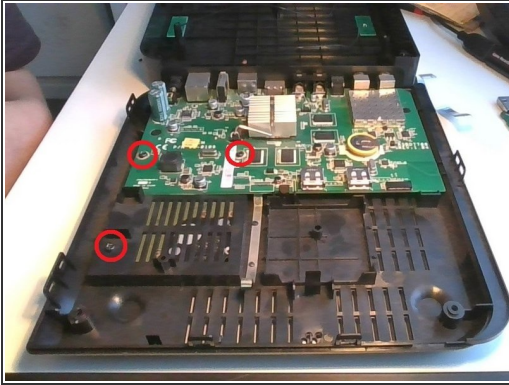
- remove the black tape holding the USB wifi adapter in place, then remove it the same way you would remove a USB stick

## Step 6 — Removing the IR sensor's board



- remove the ribbon cable on both ends and then carefully remove the IR sensor's board from the device
- Please note that there is a metal tab thing holding the board in place, pull it a little bit and remove the board

## Step 7 — Removing the Main Board and hard drive



- Remove the screws holding the circuit board in place
- There is a screw on the hard drive cover next to the board, remove it
- remove the hard drive and you should be able to get the main board

## Step 8 — And you're done!



- Take some nice pics of the t-box
- To put it back together, do all these steps in reverse