



2013 Subaru Impreza WRX Mud Flaps Replacement

Learn how to replace the front and back mud flaps on your 2013 Subaru Impreza WRX.

Written By: Alex Davis



INTRODUCTION

Are your mud flaps cracked or broken? Use this guide to replace your mud flaps to look brand new.



TOOLS:

- [7/16" Socket](#) (1)
- [10mm Wrench](#) (1)
- [Socket Wrench](#) (1)
- [Phillips #2 Screwdriver](#) (1)



PARTS:

- [Subaru Impreza WRX Mud Flaps](#) (2)
Front
- [Subaru Impreza WRX Mud Flaps](#) (2)
Back

Step 1 — Mud Flaps



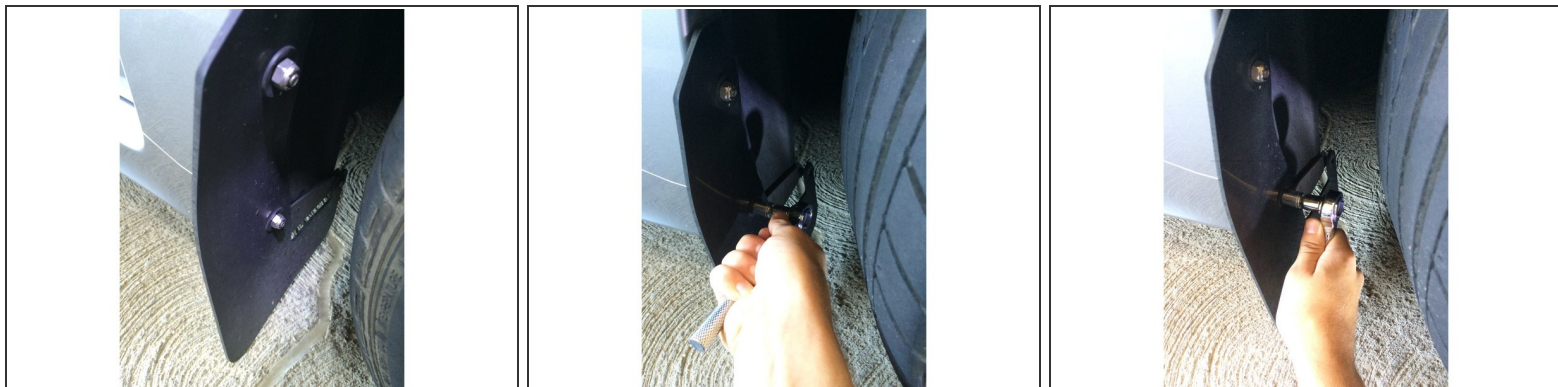
- ⚠ Always make sure your car is off, the parking break is applied, and you are in a safe area free from other passing cars.

Step 2



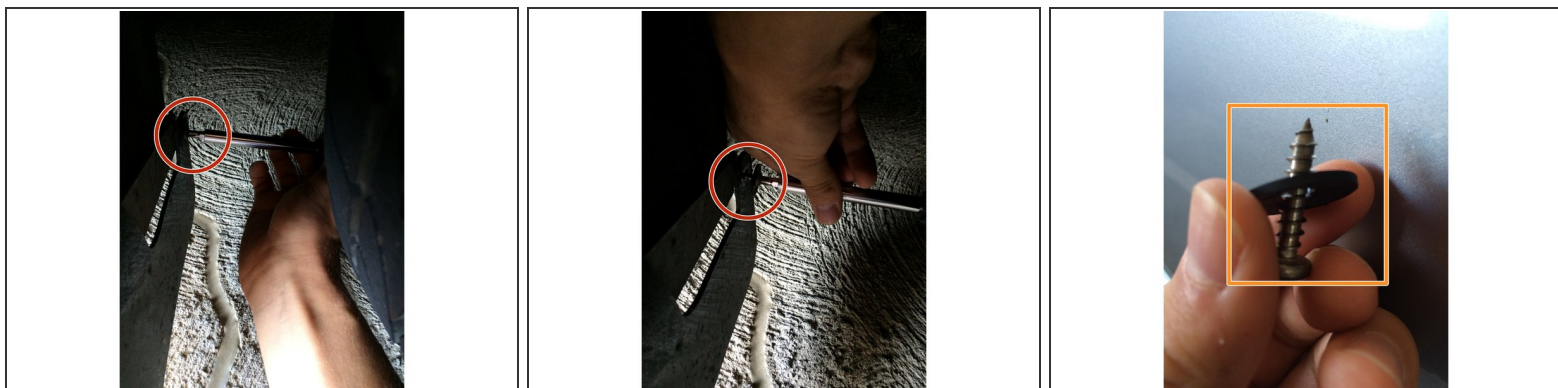
- Turn the wheels all the way towards the side you will be working on.
- ⓘ This will create easier access to the inside of the wheel well when you are replacing the mud flap.

Step 3



- Start with the front mud flaps.
- Attach the 7/16th size socket piece to the wrench and begin removing the 7/16th diameter nuts.

Step 4



- Use your Philips Head screwdriver to unscrew the farthest #6 3/4" Stainless Philips Screw.
- Be careful not to loose the rubber gasket attached to the screw.

Step 5



- Once the old mud flap is removed, grab your new mud flap and reattach it in the same manner as how you removed the old or broken one.
- Repeat for opposite front mud flap.

Step 6



- ❗ For the back two mud flaps you will need to use a slightly different technique due to the limited space you will be working in.
- Use your hands and the 10mm wrench piece to unbolt the mud flap.
- Once you have removed the nuts, you can move on to the #6 3/4" Philips Head Screw.
- ❗ This step will be aided by the use of an extra small Philips screwdriver.


Step 7



- Replace both back mud flaps and fasten all pieces back in place.

Step 8



 Make sure the mud flaps are all properly tightened and positioned before driving your car again.

- Enjoy your brand new mud flaps.

To reassemble your device, follow these instructions in reverse order.