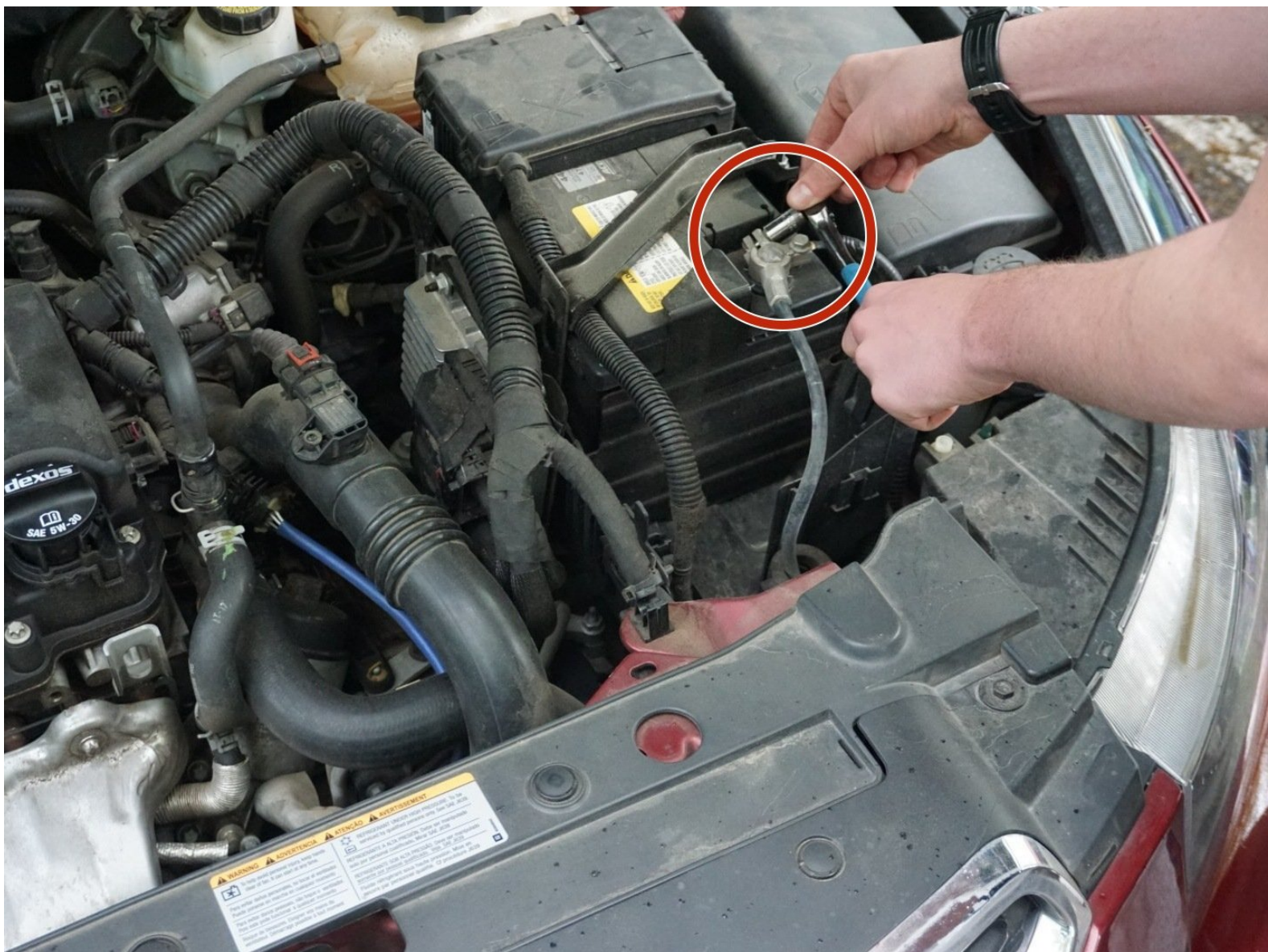




2016 Chevy Cruze Door Alarm Disassembly

This guide provides a step-by-step instructions on how to disassemble a 2016 Chevy Cruze driver's side door and locate the alarm sensor mechanism.

Written By: Q-m.A.l.n.



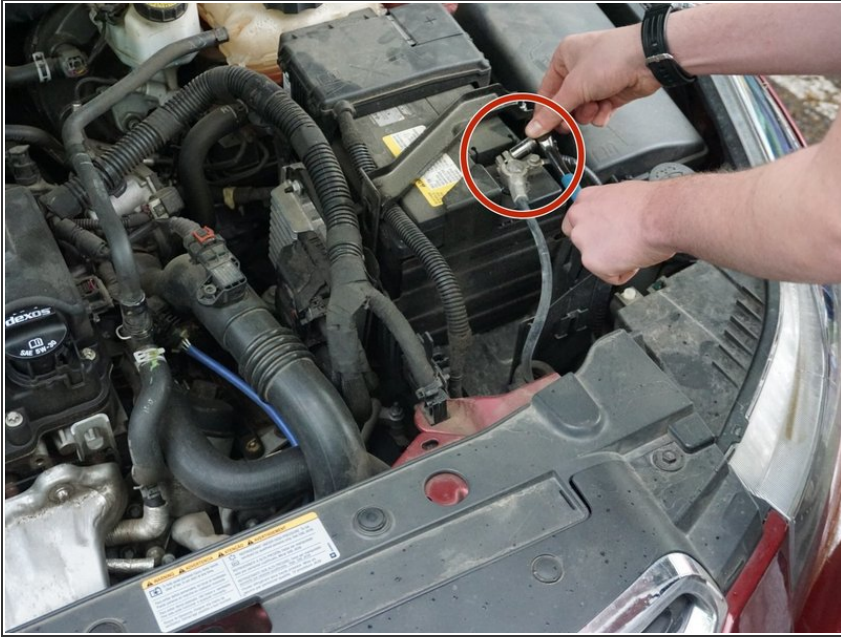
INTRODUCTION

The following guide provides the necessary information to remove the driver's side back door panel in order to locate and replace the alarm sensor mechanism. Reading instructions from Introduction to Conclusion is required. Safety items should be worn throughout the process. The process can be completed by one person, but is recommended to be handled by two or more. The excessive use of force could lead to damaging parts that would prevent the functionality or the aesthetics of the vehicle. The steps should be followed in order and in reverse order when completing reassembly.

Tools:

- Safety goggles
- Mechanic's gloves
- Socket wrench
- 10mm socket
- Star bit screwdriver
- Flathead

Step 1 — Dissengage Battery



- Disengage the battery leads starting with the negative (black) lead
- ⚠ Ensure safety glasses are worn, and no contact is made between the positive and negative terminals of the battery. Place the battery upright to not distort the sulfuric acid inside the casing.

Step 2 — Removal of hex bolts in door panel



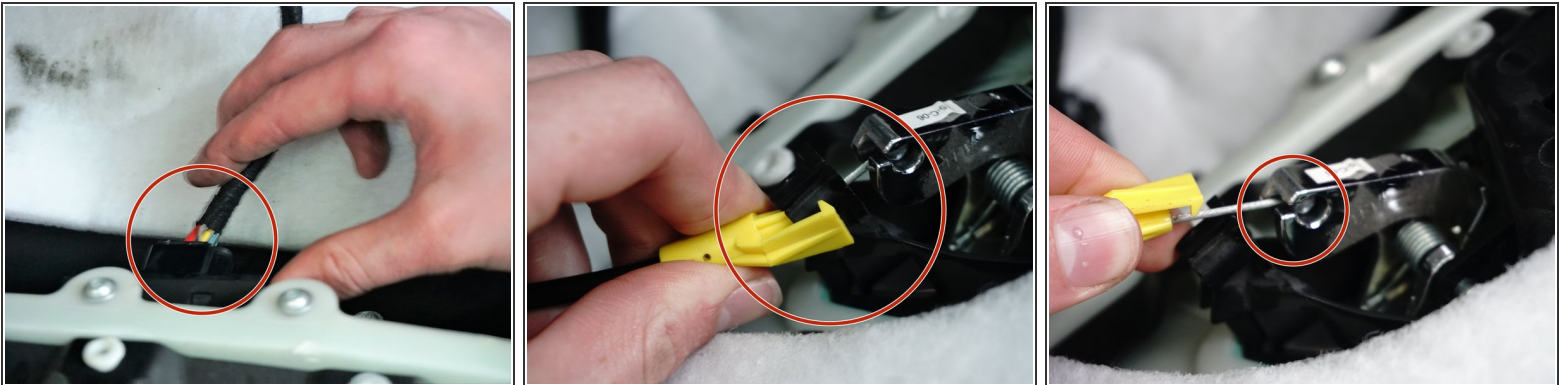
- Remove 2 hex bolts.
 - One is located in the back inside portion of the door handle
 - The other is located on the door's arm rest. Sometimes bolts are under plastic covers that have to be popped out with a flat screwdriver.

Step 3 — Exposing the interior portion of the door panel



- Using a flat edge tool such as a screwdriver to remove the door panel by applying leverage at the indicated locations.
- The plastic grommets that secure the door panel must not be damaged.
- This may require some force, be careful as to not use too much. This could lead to aesthetic problems involving fitting with reassembly.
- Lift the door panel up out of its slot by the window and pull the panel away from the door.

Step 4 — Removing the actuator clip



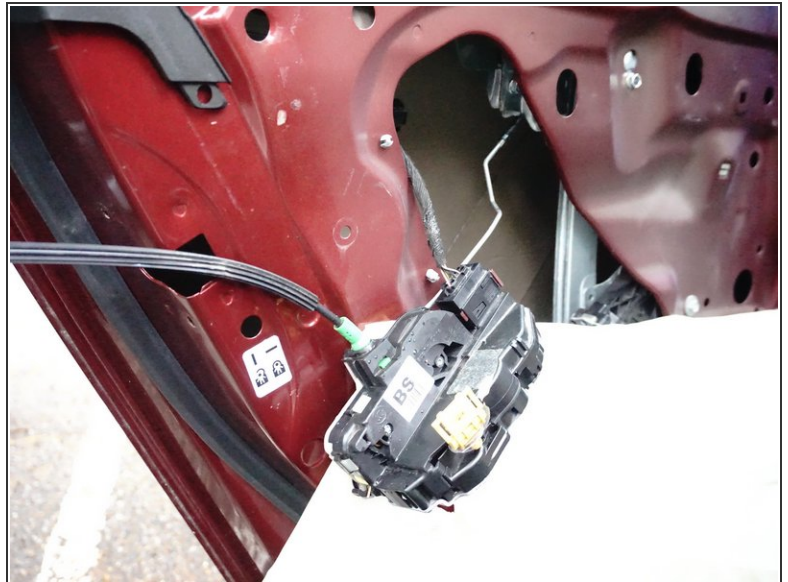
- Locate the black cord leading to the actuator clip.
- Remove the yellow actuator clip.

Step 5 — Removing the plastic covering



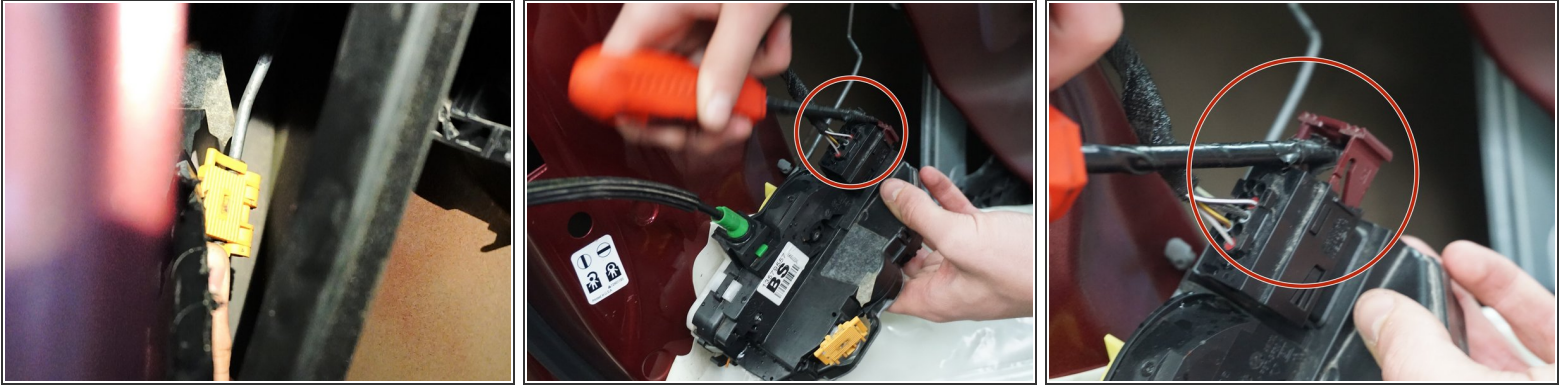
- Locate the clips attaching the plastic sheath to the door.
 - Carefully remove the top portion of the plastic covering.
 - You can fully or partially remove the plastic, but must remove the top portion in order to allow enough area to remove the interior components.
- i** Note: you can re-attach the plastic covering with out the need of extra adhesive.

Step 6 — Removal of hex bolts



- Remove the 2 hex bolts on the interior side panel of the door.
- This will expose the alarm mechanism that is held by two black cables.

Step 7 — Removal of alarm mechanism



- Carefully pull out the alarm mechanism while keeping it close enough to the door to not pull out the black cables attached.
- Remove the purple clip by prying it out with a flat headed tool or pliers

Step 8 — Replacing the alarm sensor



- Remove the old alarm trigger sensor.

The time required may vary based on your prior knowledge or experience. To reassemble your device, complete these instructions in reverse order.