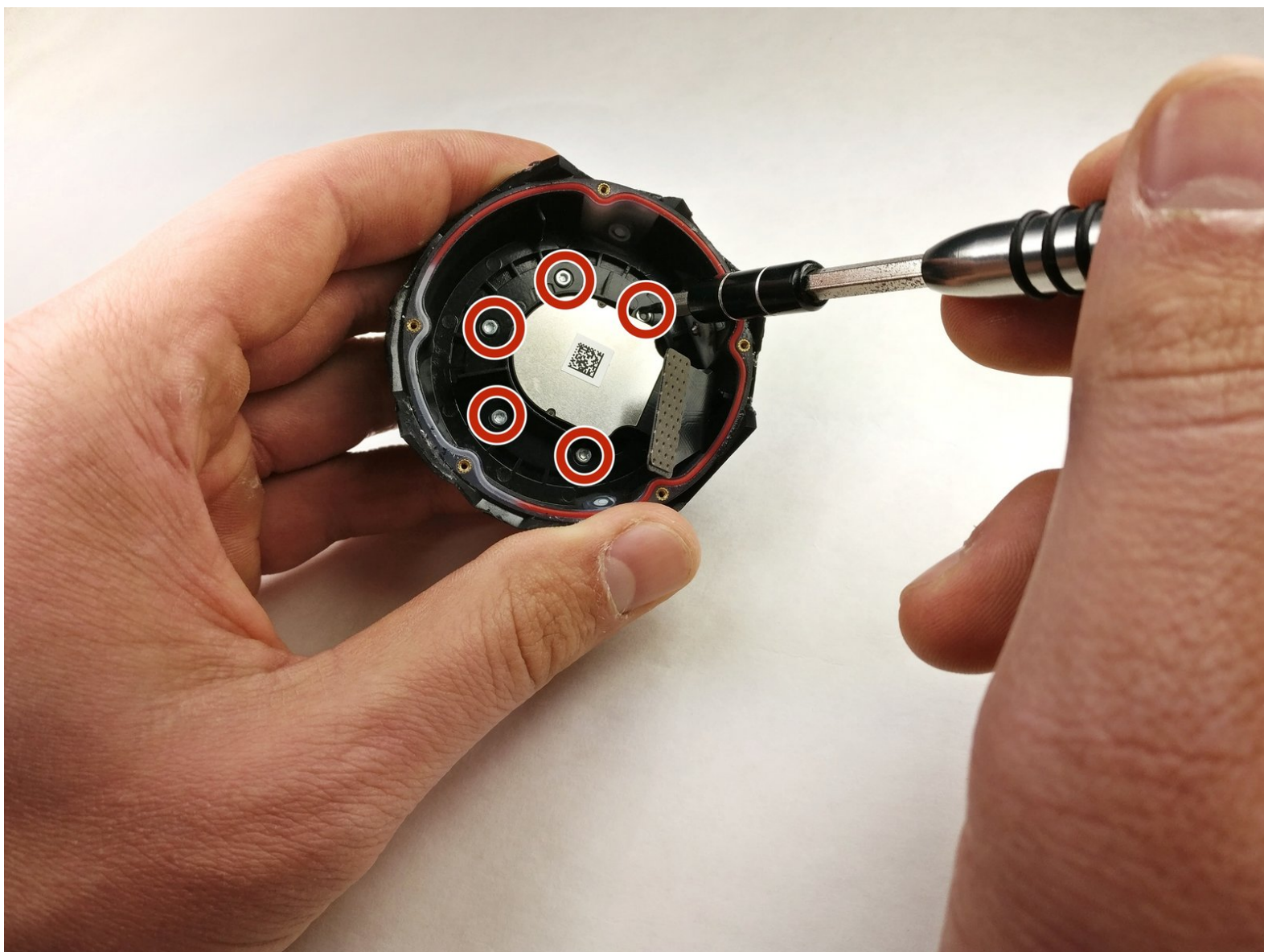




360fly 4K Lens Replacement

This guide shows how to replace the lens.

Written By: Jacob Herron



INTRODUCTION

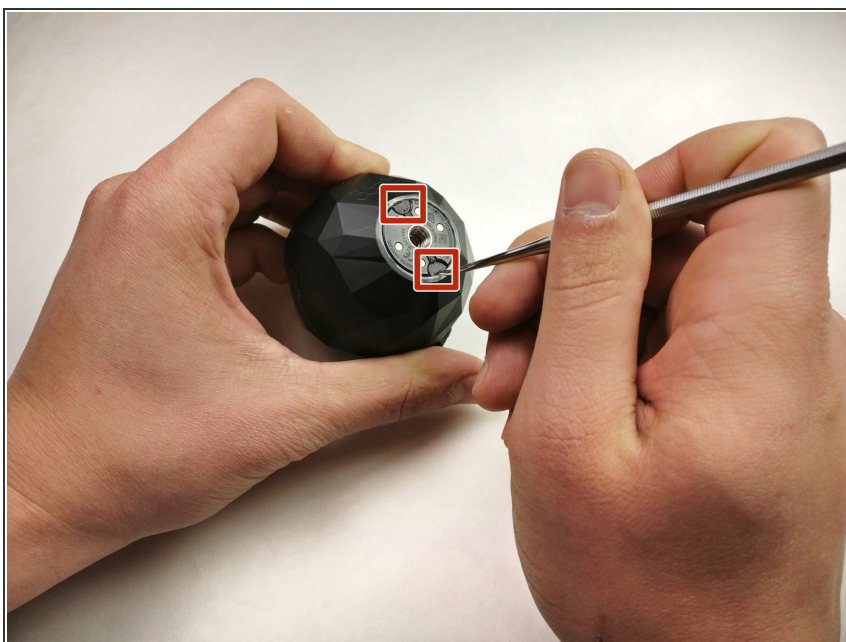
This guide walks you through how to replace the lens on a 360fly 4K camera.



TOOLS:

- [T4 Torx Screwdriver](#) (1)
 - [Metal Spudger](#) (1)
 - [iFixit Opening Tools](#) (1)
-

Step 1 — Battery



- Flip the camera upside down and peel off the two plastic screw covers with the metal spudger to reveal the screws.

Step 2



- Remove the two 5mm T4 screws from the bottom of the camera with a t4 screw driver.

Step 3



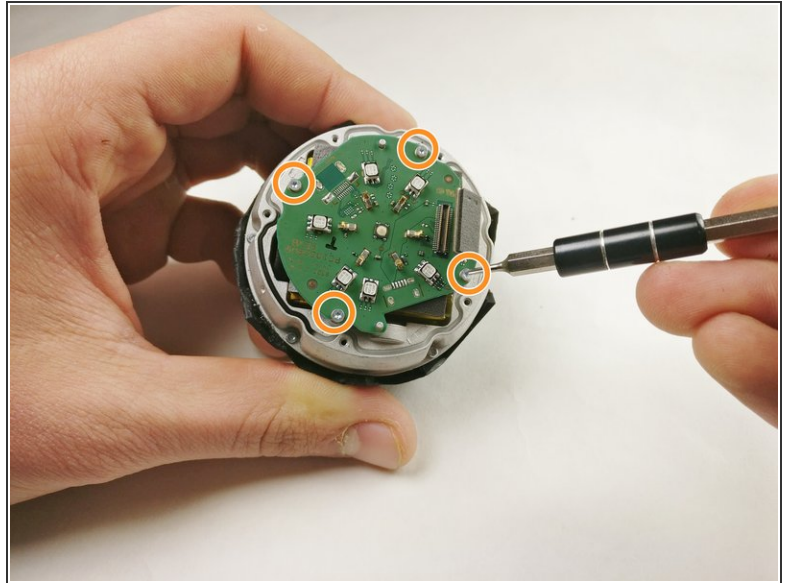
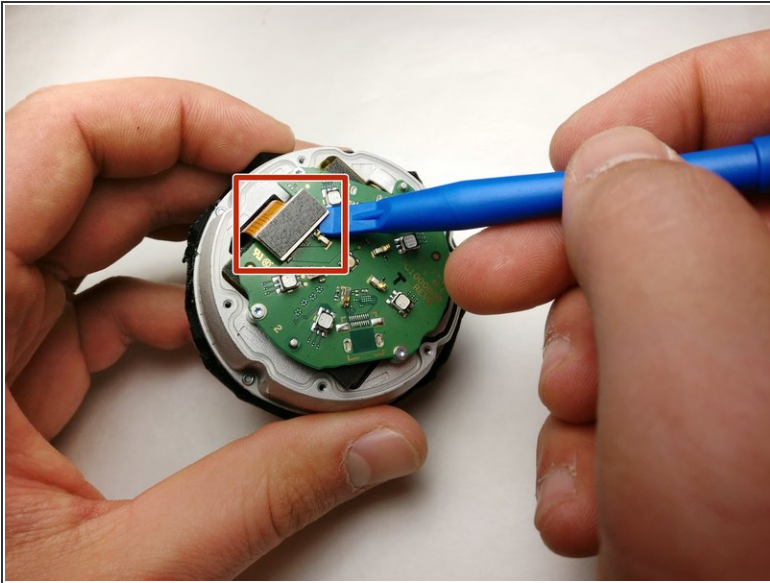
- Gently pry the plastic ring from around the charging plate with the metal spudger.
- Remove the outside shell by pressing against the center of the charging plate and pulling the bottom shell away from the top shell.

Step 4



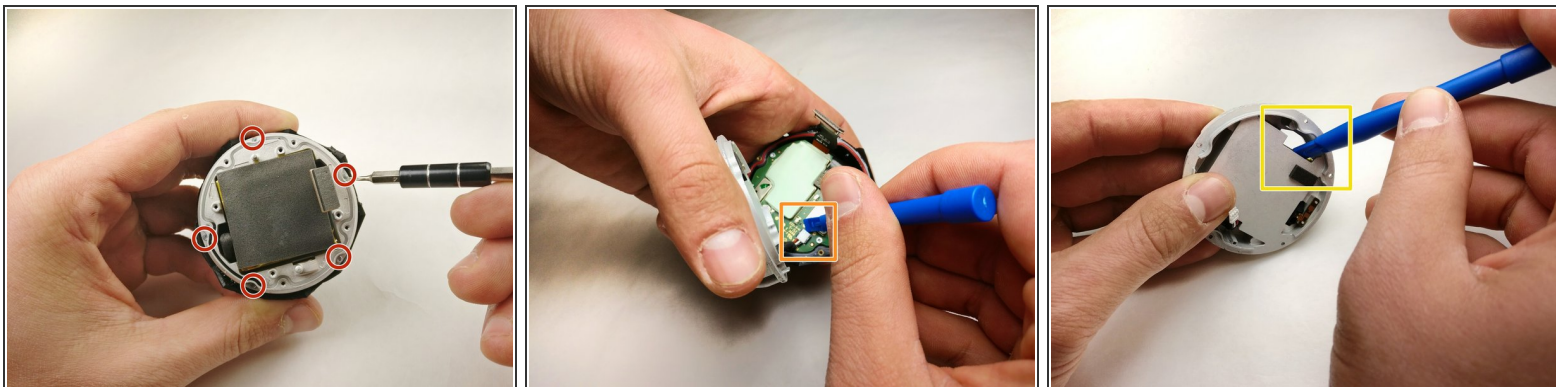
- Remove the five 2mm T4 screws and pull off the charging plate assembly with the t4 screw driver.

Step 5



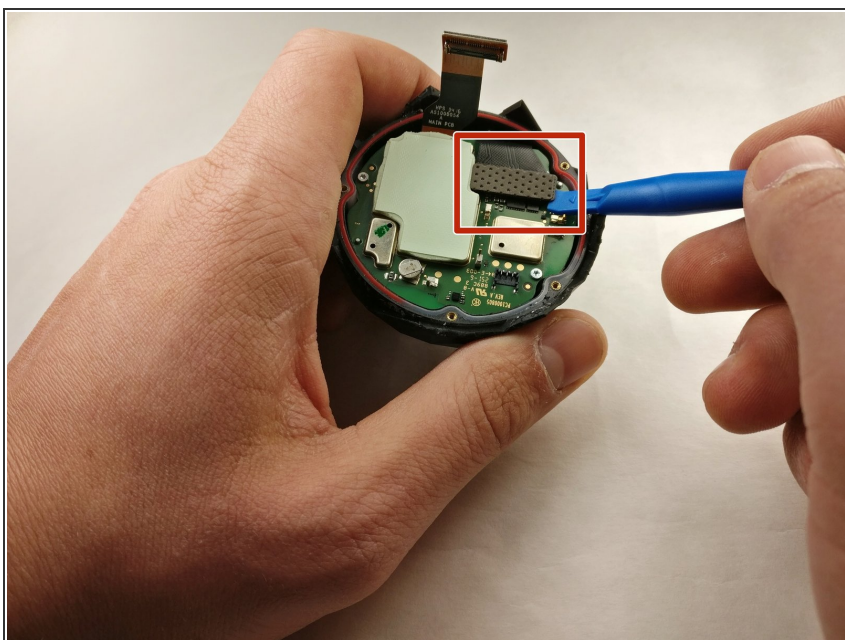
- Gently pry the plug off the port on the circuit board with a plastic opening tool.
- Remove the four 2mm T4 screws and take off the circuit board with a T4 screw driver.

Step 6



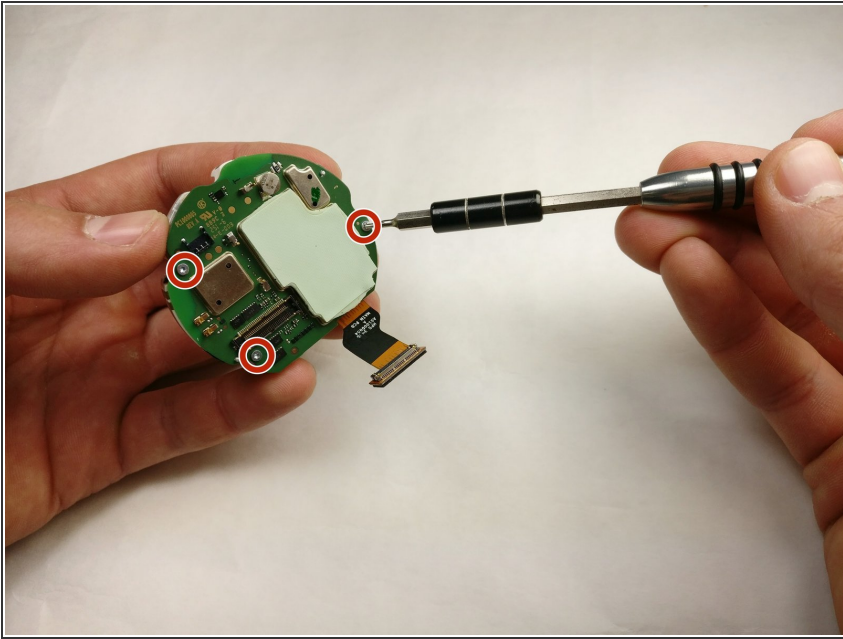
- Remove the five 4mm T4 screws around the battery assembly with a t4 crew driver.
 - Lift the battery assembly and gently pry the plug out of its port on the board below with a plastic opening tool.
 - Press the battery from the back of the battery assembly to remove it with a plastic opening tool until the glue releases the battery.
- ⚠ Do not puncture or bend the battery. Use a small amount of heat to assist in softening the adhesive if necessary.

Step 7 — SD Card



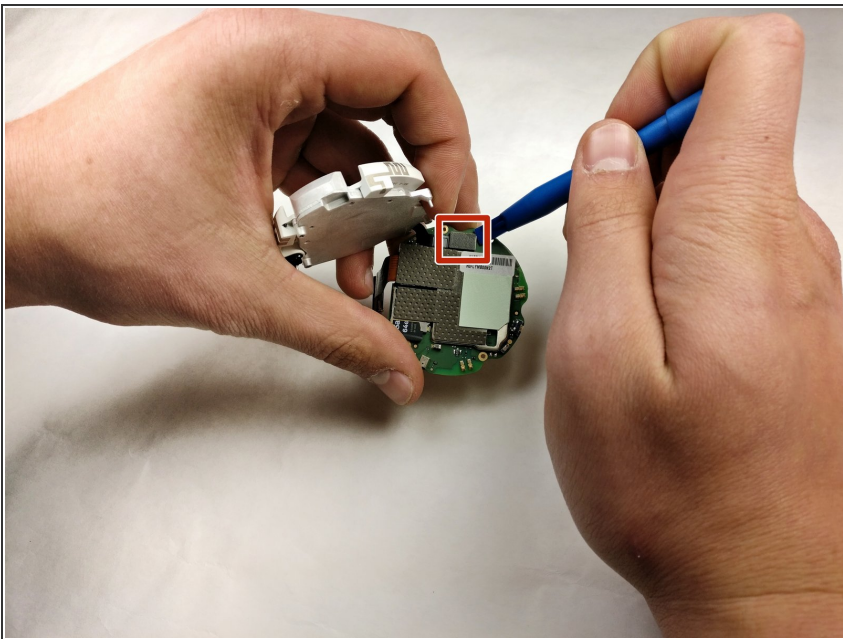
- Gently pry the plug from the motherboard and remove the motherboard from the assembly.

Step 8



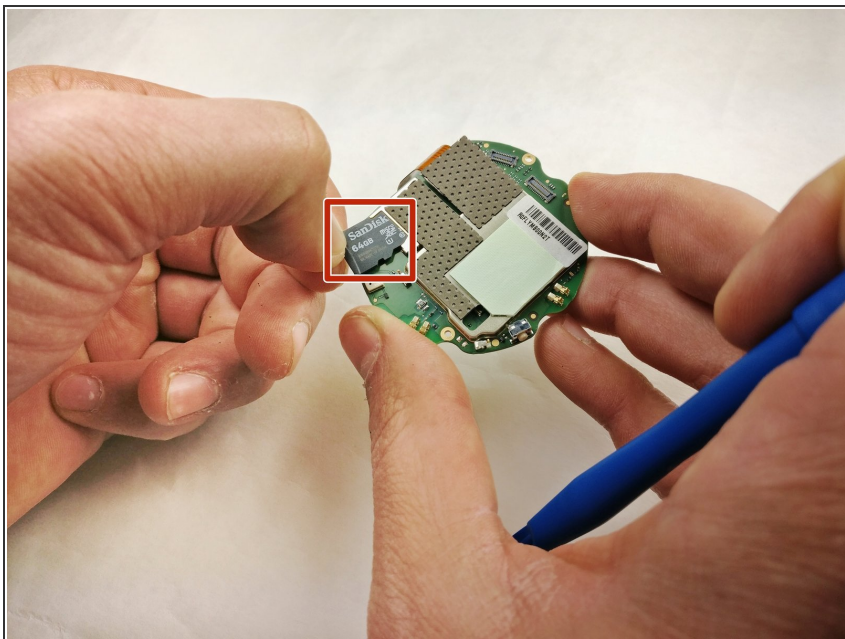
- Remove the three 3mm T4 screws from the circuit assembly with a T4 screwdriver.

Step 9



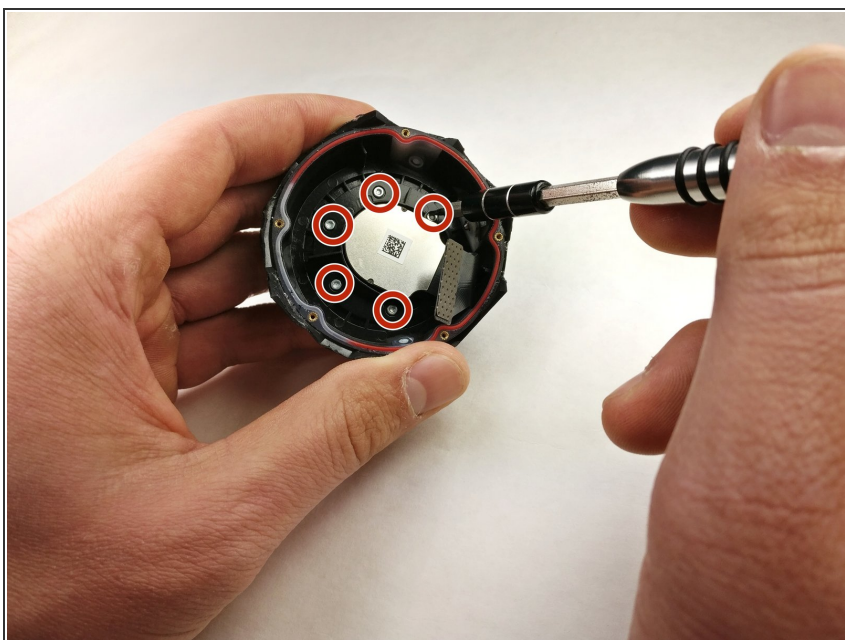
- Gently pry out the plug from the circuit assembly.

Step 10



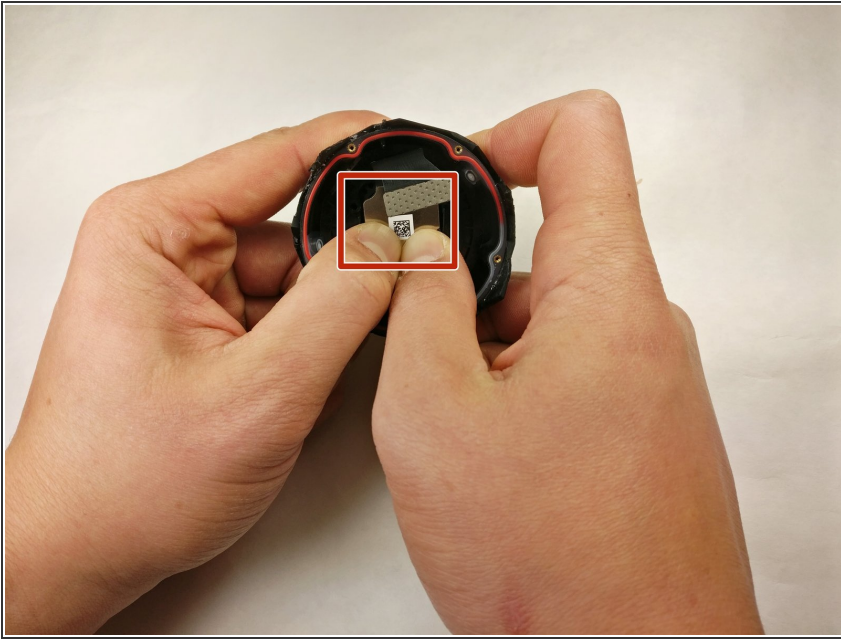
- Press and release the SD card to remove it from the circuit assembly.

Step 11 — Lens



- Unscrew the five 3mm T4 screws with a T4 screwdriver.

Step 12



- Gently push against the lens module to remove it from the 360fly 4K assembly.

To reassemble your device, follow these instructions in reverse order.