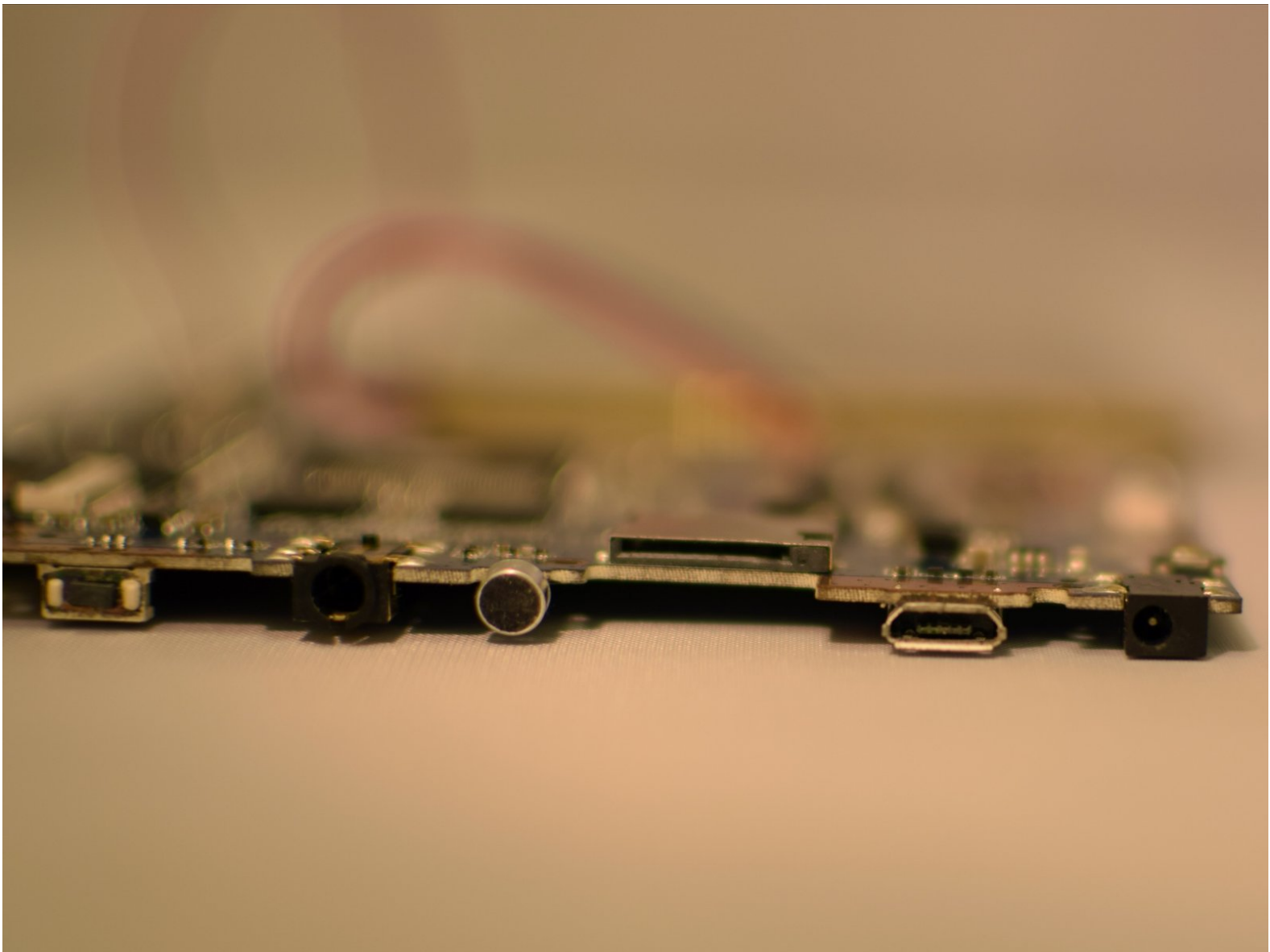




4Sight 9 Charging Port Replacement

If you are having trouble with charging your 4Sight tablet then replacing a faulty charging port may help.

Written By: Robert Shredow





TOOLS:

- [T8 Torx Screwdriver](#) (1)
- [Tweezers](#) (1)
- [Soldering Iron](#) (1)
- [Phillips #00 Screwdriver](#) (1)
- [iFixit Opening Tools](#) (1)

Step 1 — Cover



- Take tablet and rotate on its side, so that the two screws are facing upward.
- Use Phillips #00 Screwdriver to remove two 1mm screws on the left side of the tablet.

Step 2



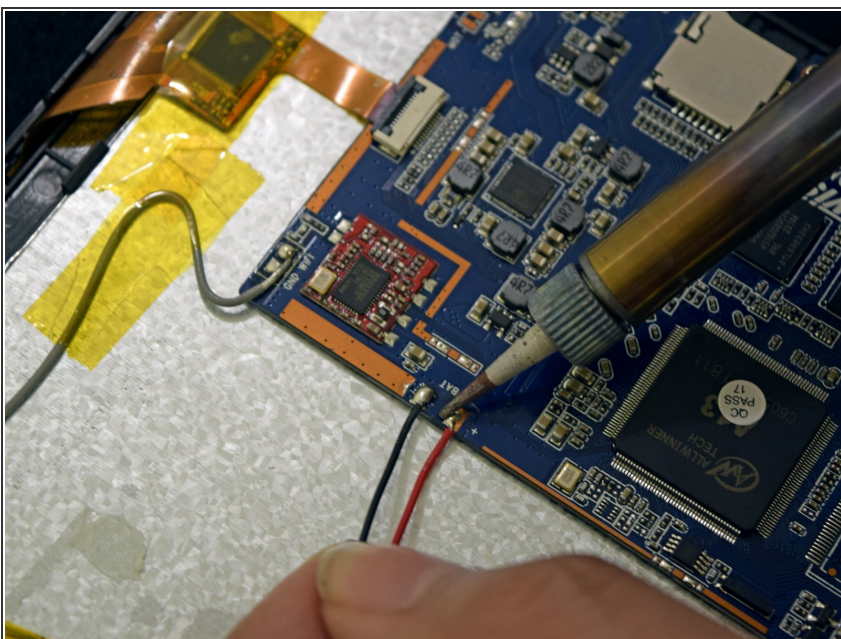
- Insert plastic prying tool and pry back case away from the device slowly moving the plastic prying tool along the device.
- ⓘ Once loosened, use hands to help separate case from device.

Step 3



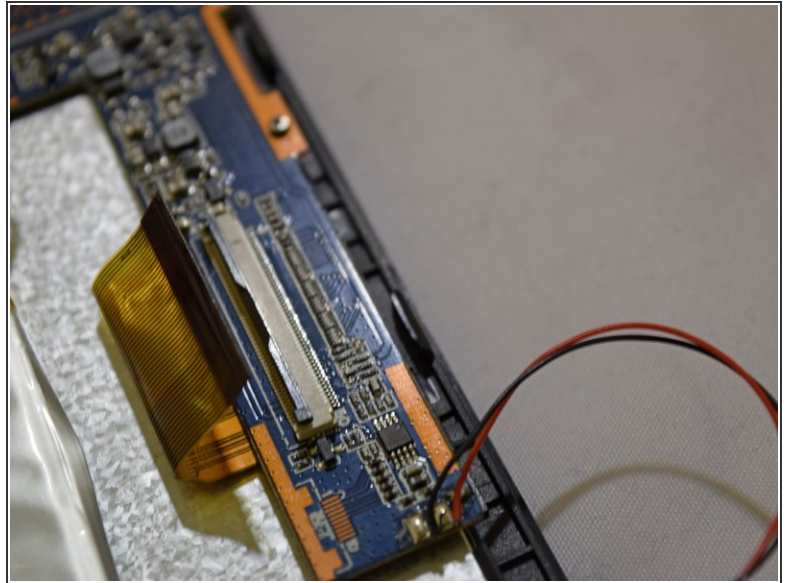
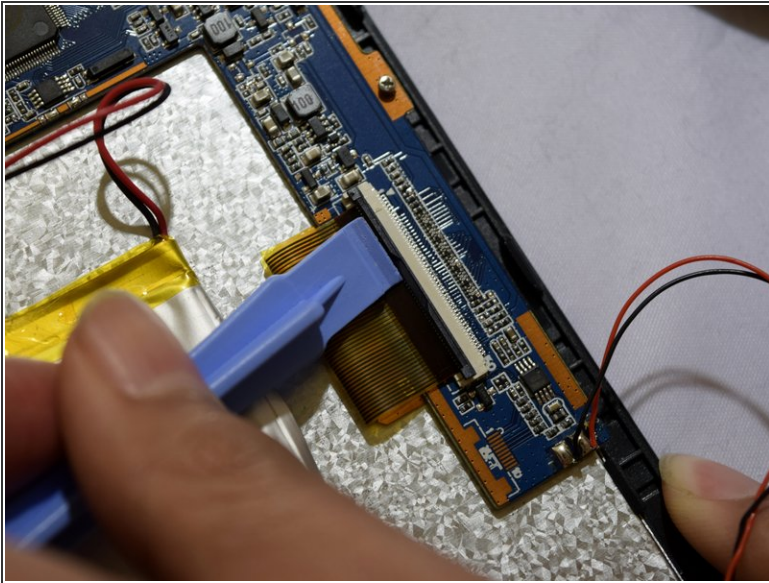
- Hold positive and negative wires as close as possible to the speaker.
- Use plastic prying tool and fingers to simultaneously lift speaker from cover.
- ⓘ Set cover aside.

Step 4 — Motherboard



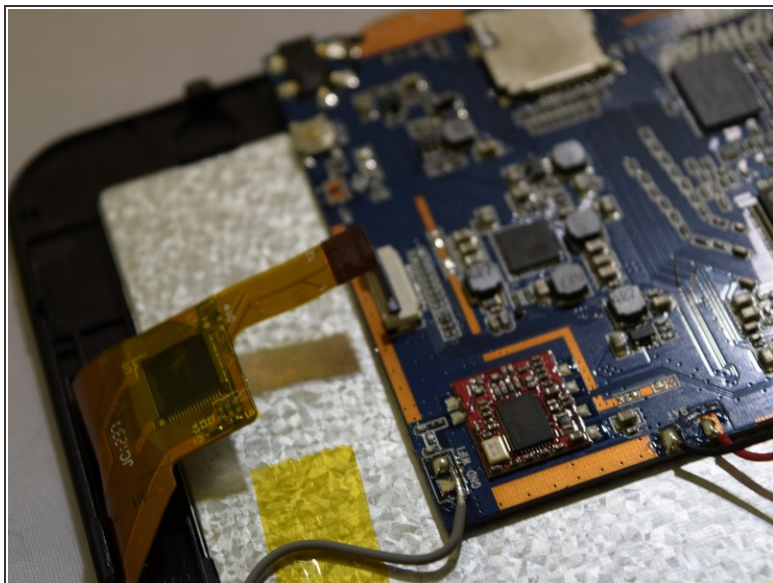
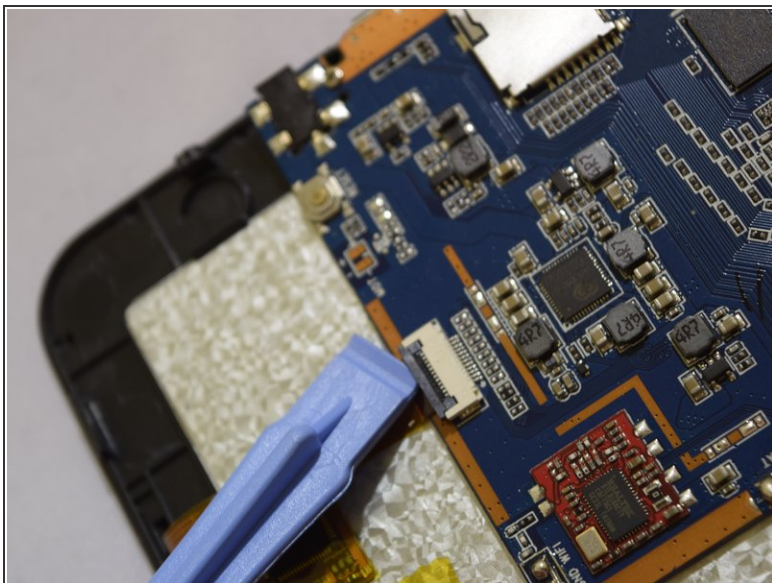
- Use soldering gun to remove the positive and negative wires connecting the battery to the circuit board.
- ⓘ For a complete guide on how to solder, [click here](#).

Step 5



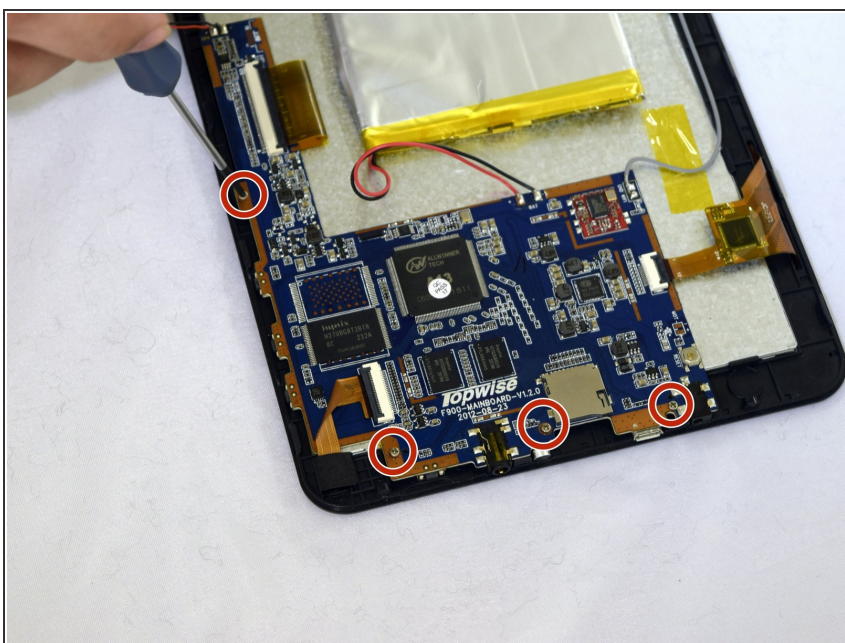
- Grip the ribbon located at the far end of the circuit board with a plastic spudger tool.
- Put pressure on the connector until the clasp comes undone.
- Gently pull up on electrical ribbon until it disconnects from circuit board.

Step 6



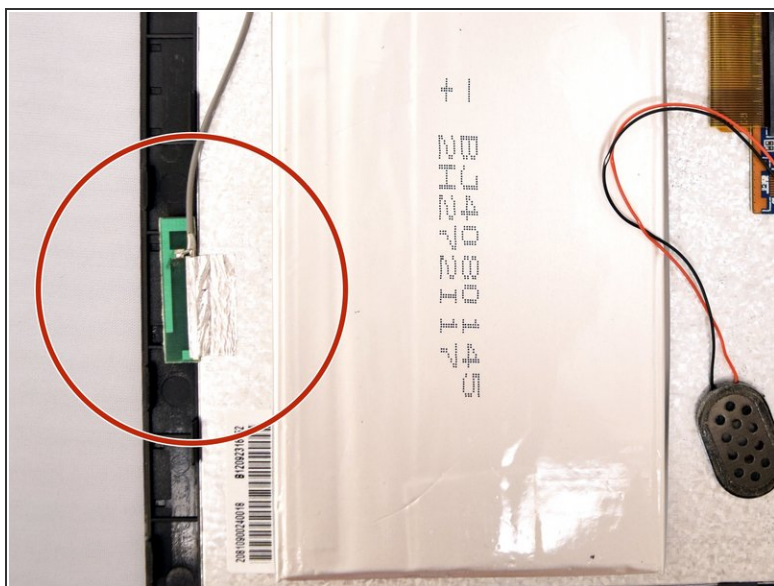
- Remove the second electrical ribbon from the motherboard.
- ⓘ Use the technique for the previous ribbon.

Step 7



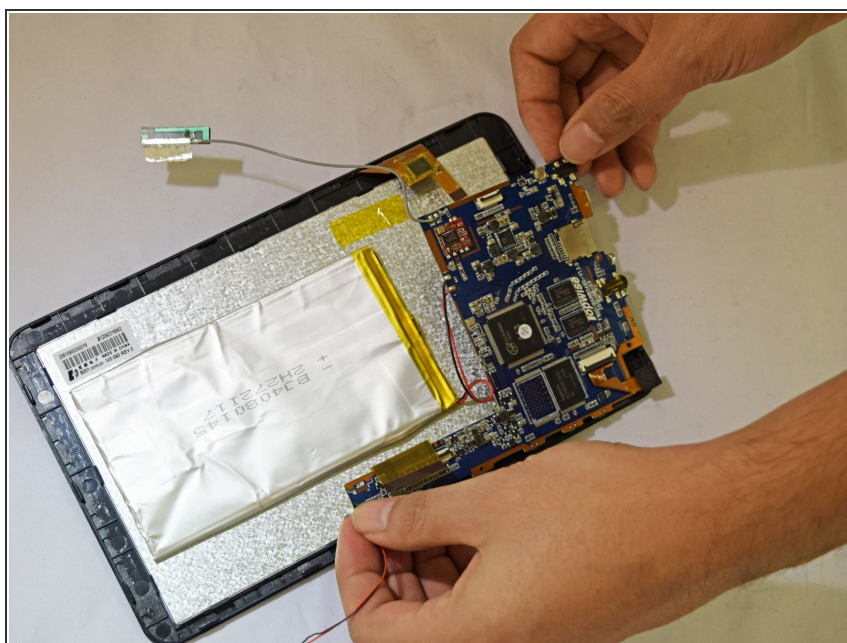
- Using #00 Phillips Screwdriver, remove the four 1mm screws holding the circuit board to the device.

Step 8



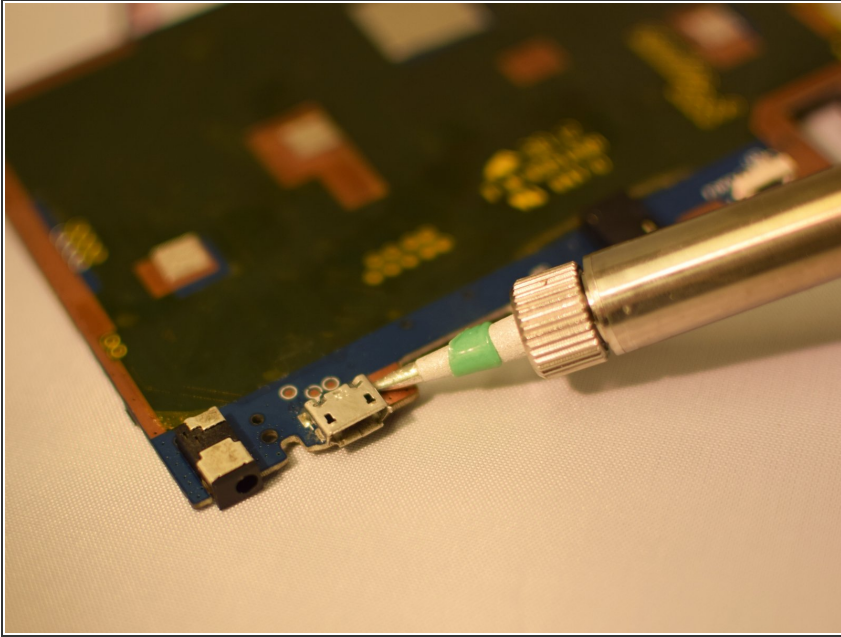
- With fingers, grip the green Wi-Fi connector.
- Gently pull up on connector to remove tape holding the connector in place.

Step 9



- Using your fingers, gently lift the motherboard.

Step 10 — Charging Port



- Use soldering gun and when solder is malleable, lift up on the left side of the charge port until it is not connected to the board with tweezers.
- ⚠ Charging port may be very hot due to soldering iron.
- Repeat this step on right side of charging port.
- ⓘ For a complete guide on how to solder, [click here](#).

To reassemble your device, follow these instructions in reverse order.