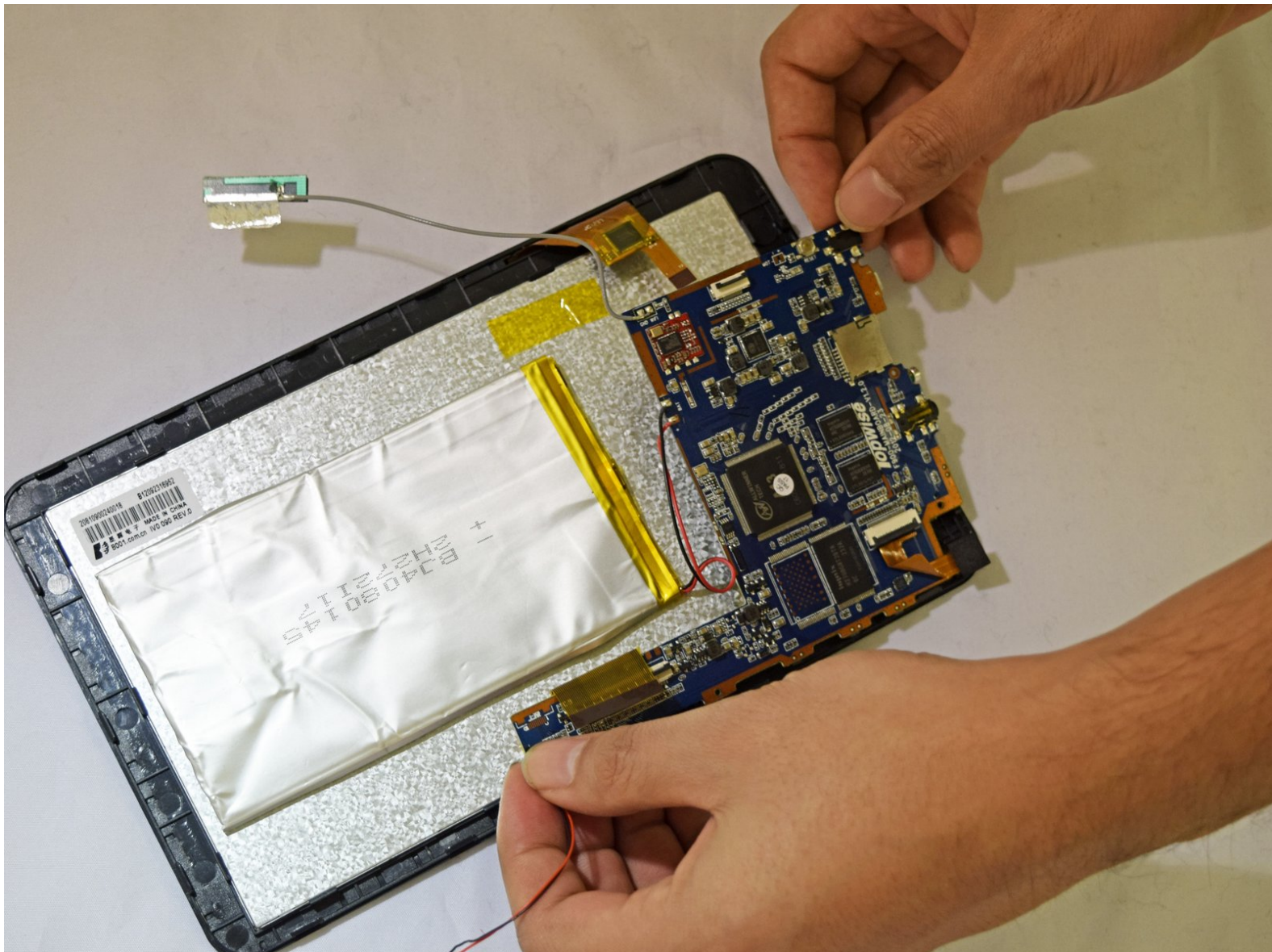




# 4Sight 9 Motherboard Replacement

This guide will help you remove and replace the motherboard.

Written By: Hali Ramirez



---

## INTRODUCTION

You need plastic prying tools and a 1mm screwdriver. Anticipate roughly 10-15 minutes for this procedure. Be sure to have a cleared out space.



### TOOLS:

- [T8 Torx Screwdriver](#) (1)
  - [Phillips #00 Screwdriver](#) (1)
  - [iFixit Opening Tools](#) (1)
-

## Step 1 — Cover



- Take tablet and rotate on its side, so that the two screws are facing upward.
- Use Phillips #00 Screwdriver to remove two 1mm screws on the left side of the tablet.

## Step 2



- Insert plastic prying tool and pry back case away from the device slowly moving the plastic prying tool along the device.
- ⓘ Once loosened, use hands to help separate case from device.

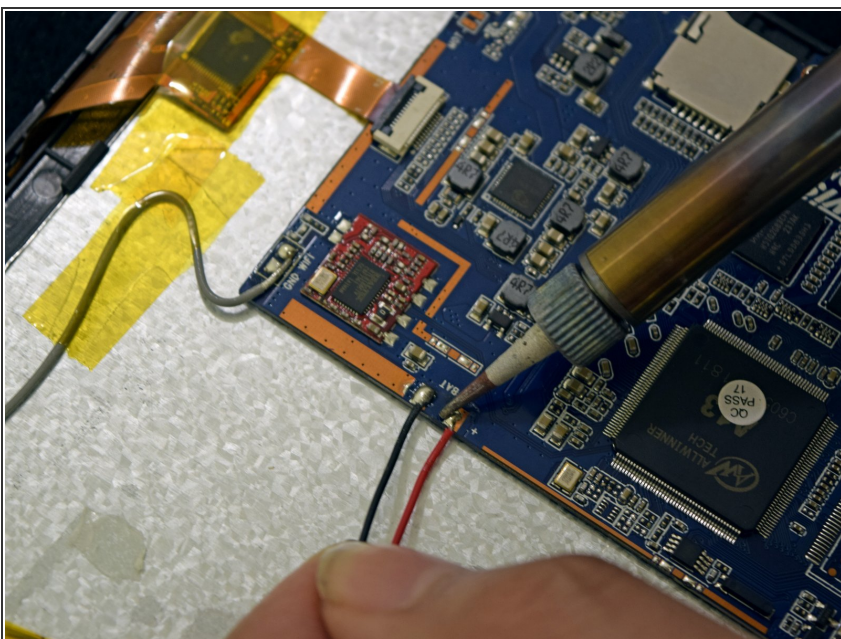


## Step 3



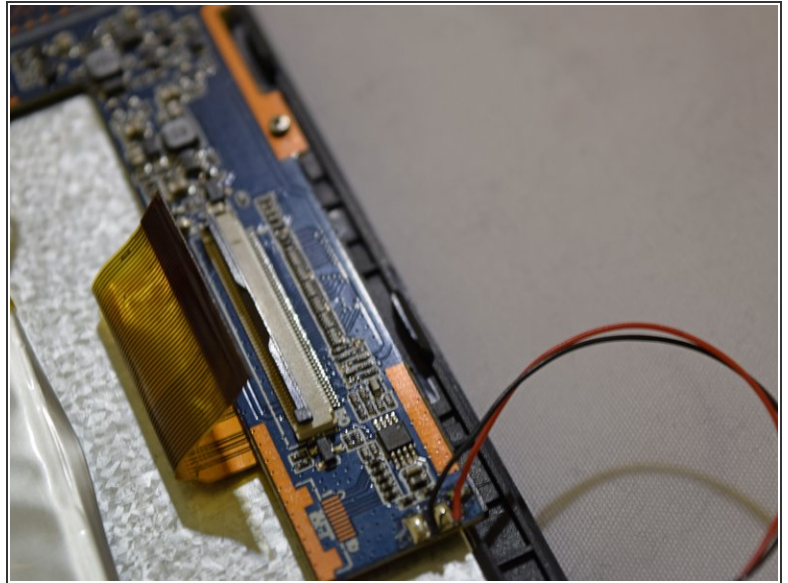
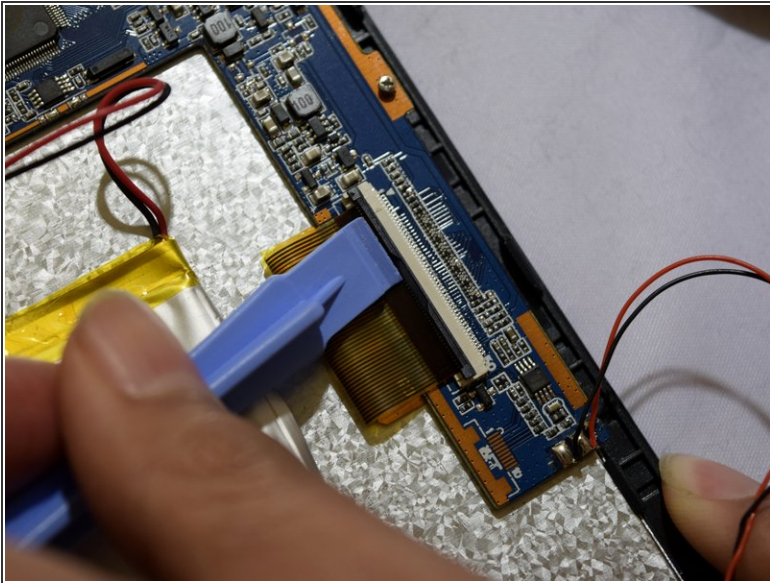
- Hold positive and negative wires as close as possible to the speaker.
- Use plastic prying tool and fingers to simultaneously lift speaker from cover.
- ⓘ Set cover aside.

## Step 4 — Motherboard



- Use soldering gun to remove the positive and negative wires connecting the battery to the circuit board.
- ⓘ For a complete guide on how to solder, [click here](#).

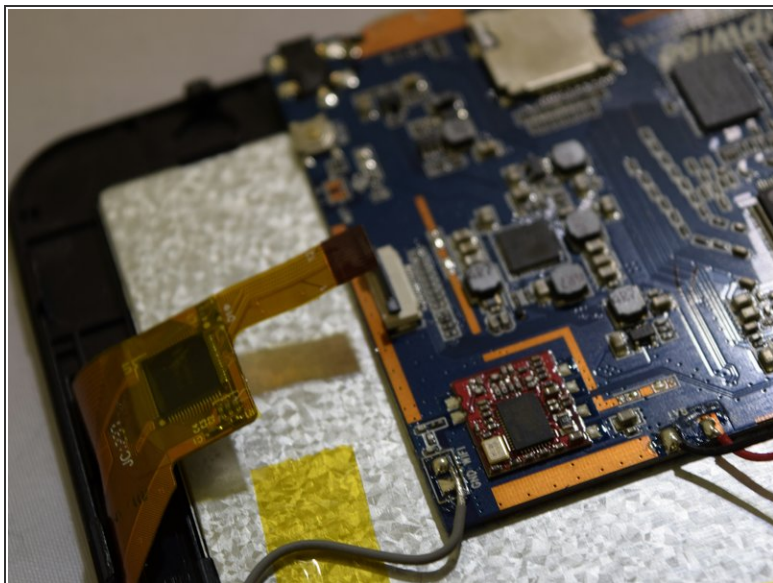
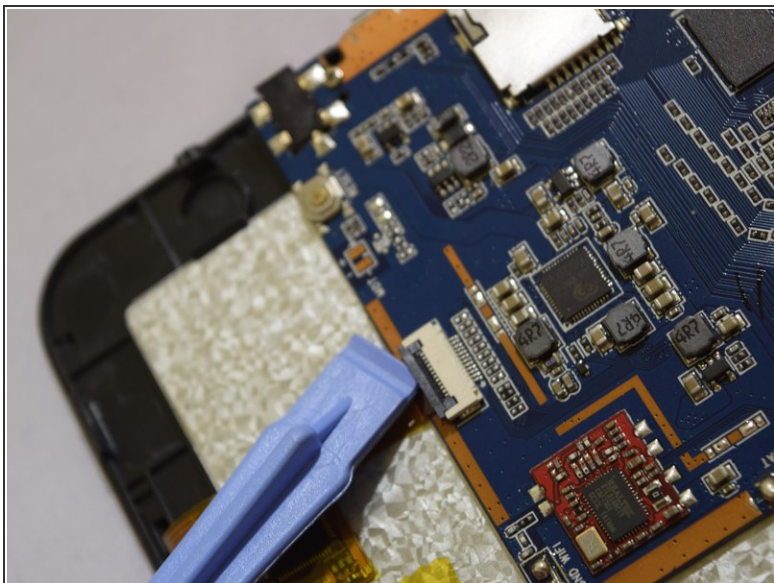
## Step 5



- Grip the ribbon located at the far end of the circuit board with a plastic spudger tool.
- Put pressure on the connector until the clasp comes undone.
- Gently pull up on electrical ribbon until it disconnects from circuit board.



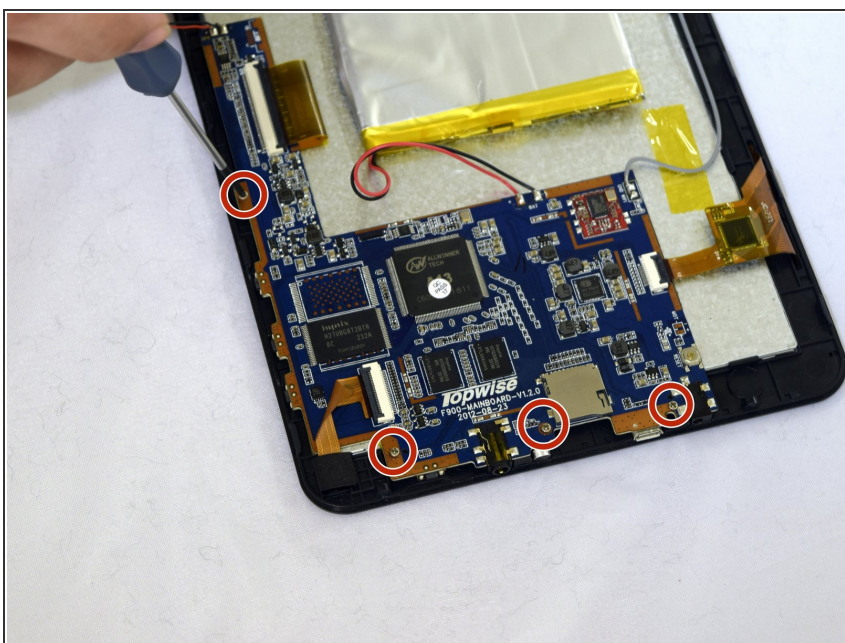
## Step 6



- Remove the second electrical ribbon from the motherboard.

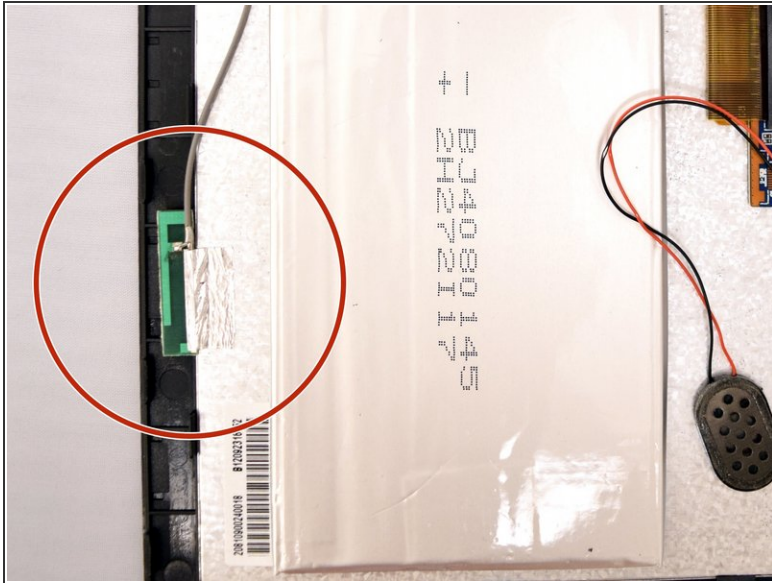
**i** Use the technique for the previous ribbon.

## Step 7



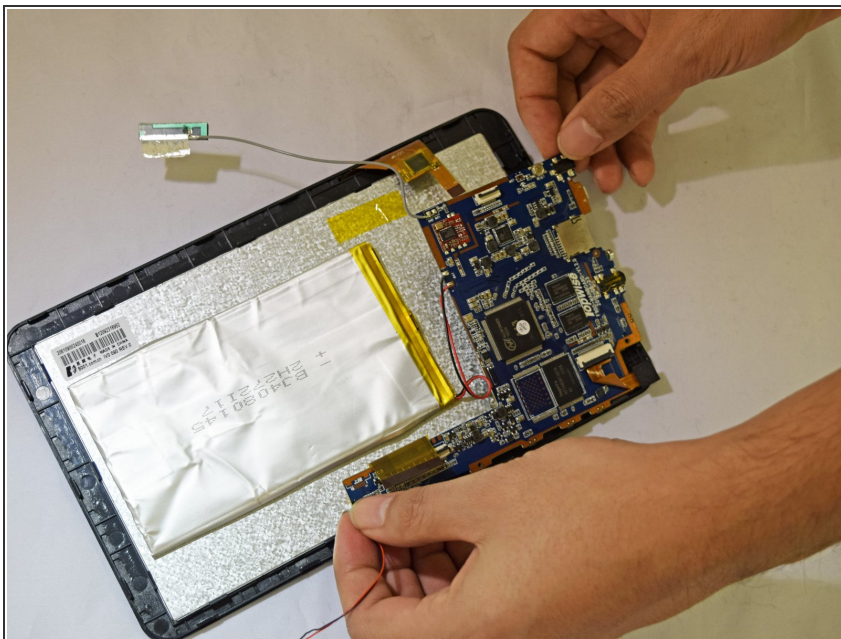
- Using #00 Phillips Screwdriver, remove the four 1mm screws holding the circuit board to the device.

## Step 8



- With fingers, grip the green Wi-Fi connector.
- Gently pull up on connector to remove tape holding the connector in place.

## Step 9



- Using your fingers, gently lift the motherboard.

To reassemble your device, follow these instructions in reverse order.