



5 LED 6 Mode Rear Bike Light Teardown

This guide shows all of the necessary steps to disassemble a generic 5 LED 6 Mode Rear Bike Light. Note the type found here does not have a brand name on the device and are sold under various fake brand names.

Written By: Alex Sireci



INTRODUCTION

The bike light in this guide is sold under various brand names, but in fact is a no-name brand and comes with no distinct markings on the packaging. Some uses for this guide are dead batteries or a broken clip.



TOOLS:

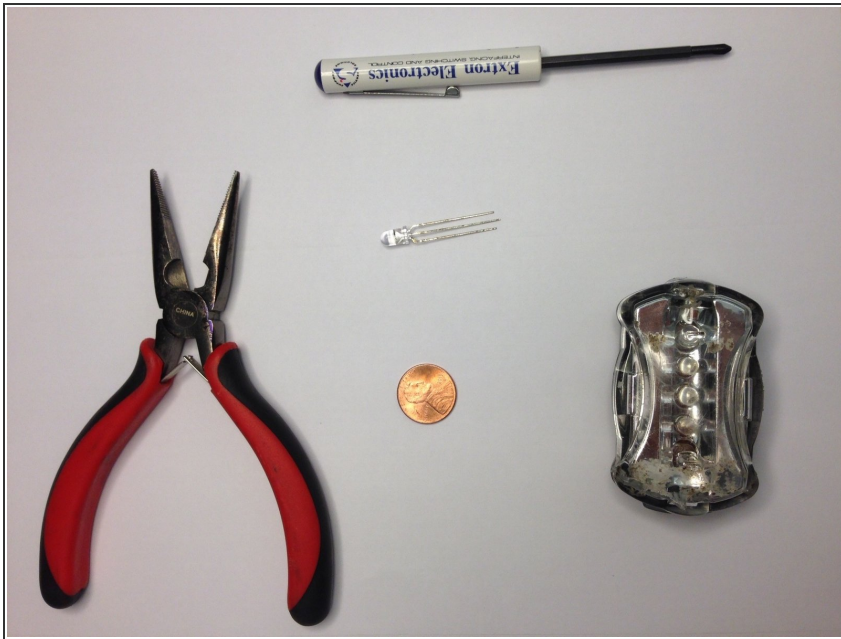
- [Phillips #00 Screwdriver](#) (1)
- [Coin](#) (1)



PARTS:

- [5 LED 6 Mode Rear Bike Light](#) (1)

Step 1 — 5 LED 6 Mode Rear Bike Light Teardown



- Obtain the necessary tools

Step 2



- Insert coin or any flat object into edge of light cover
- Pry open until cover loosens

Step 3



- Remove the single Phillips #00 screw holding the circuit board in place
- Remove both AAA batteries

Step 4



- Remove both Phillips #00 screws holding the clip in place
- Remove the clip with a flat object
- ⚠ The button will fall out when removing the clip. Do not lose it!

Step 5



- Congratulations! You completed your device teardown!

