



8BitDo SN30 Pro Gamepad Analog Stick Cap Replacement

Replace worn out analog stick caps on an SN30 Pro or SF30 Pro with new ones provided by 8BitDo.

Written By: Jose Olarte III



INTRODUCTION

The first version of the SN30 Pro and SF30 Pro used rubber-coated analog stick caps. While the choice of material made it very grippy, it also made the cap surface wear out easily. You can request 8BitDo to send you replacement parts *for free*, but you'll need to install them yourself. Enter this guide.



TOOLS:

- [T5 Torx Screwdriver](#) (1)
- [Phillips #0 Screwdriver](#) (1)
- [Spudger](#) (1)
- [Double-sided Foam Tape](#) (1)



PARTS:

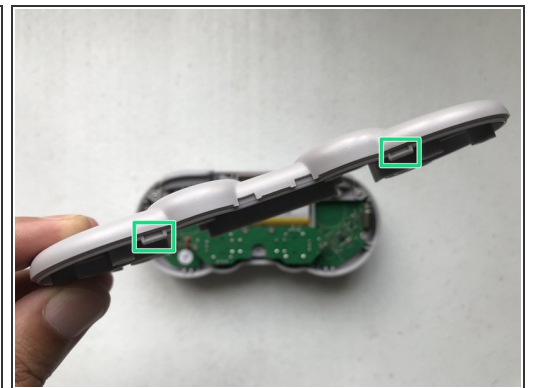
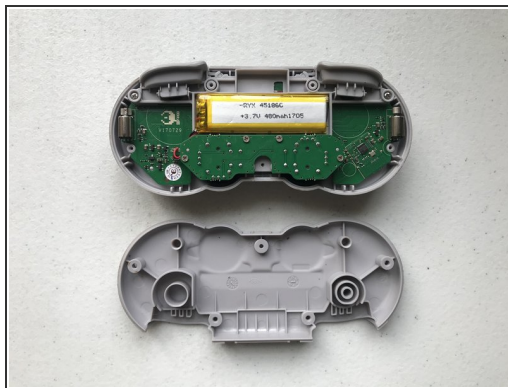
- [8BitDo Replacement Analog Stick Cap](#) (2)

Step 1 — Unscrew the Back Panel



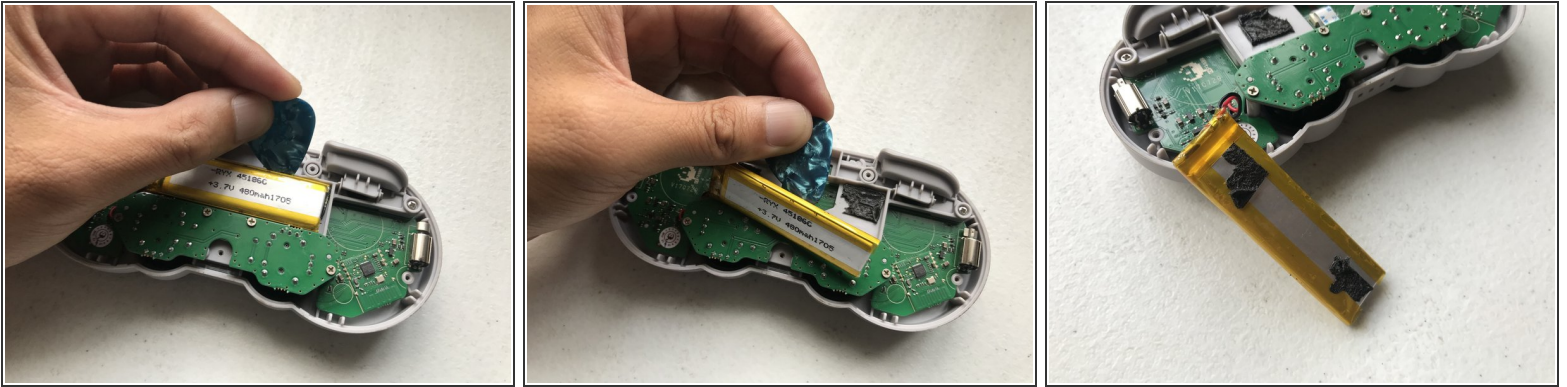
- Place the controller face down on a solid surface.
- Remove the five T5 Torx screws that hold the back panel in place.

Step 2 — Lift the Back Panel



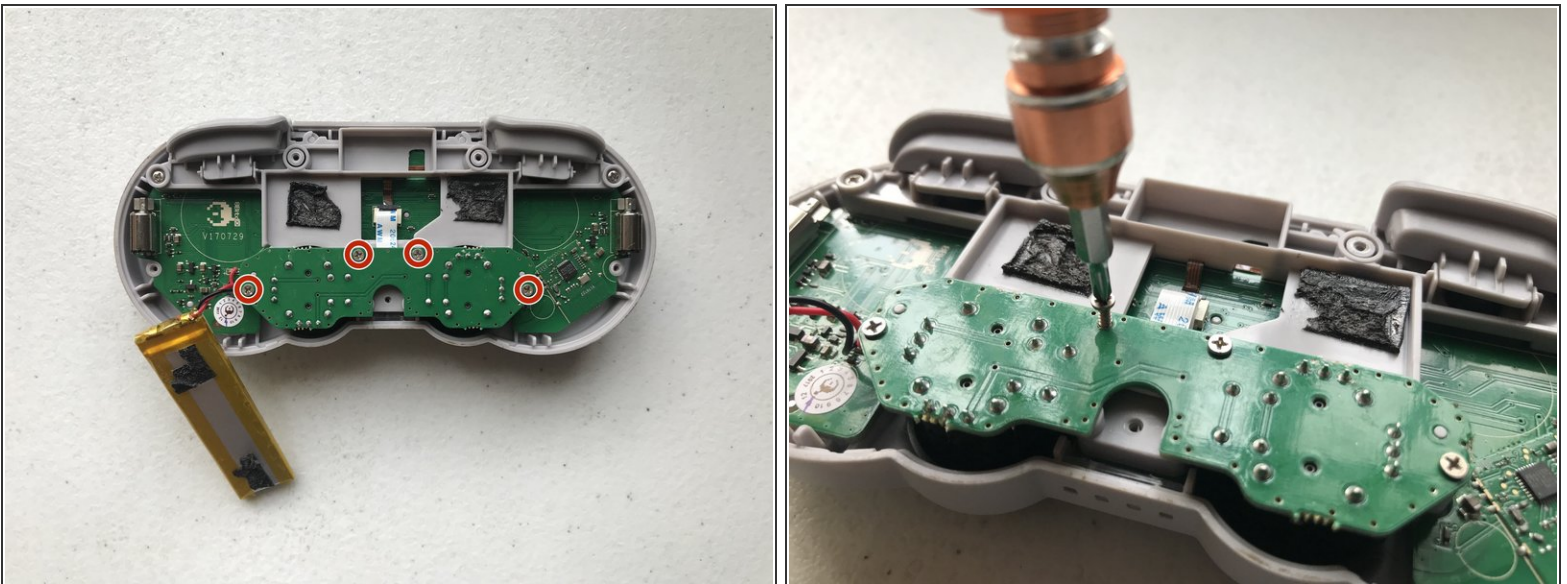
- Lift the back panel, starting along the top edge of the controller.
 - There are two notches along the bottom edge that help keep the front and back panels together. This will be useful during reassembly.

Step 3 — Remove the Battery



- Use a spudger to pry the battery out from its compartment.
 - ⚠ The battery is secured by double-sided foam adhesive. Be gentle and take your time to avoid damaging the battery.
- Set aside the battery.
 - ⚠ Be careful not to pull on the wires!
- The ribbon that connects the analog board to the main controller board is now accessible.

Step 4 — Unscrew the Analog Board



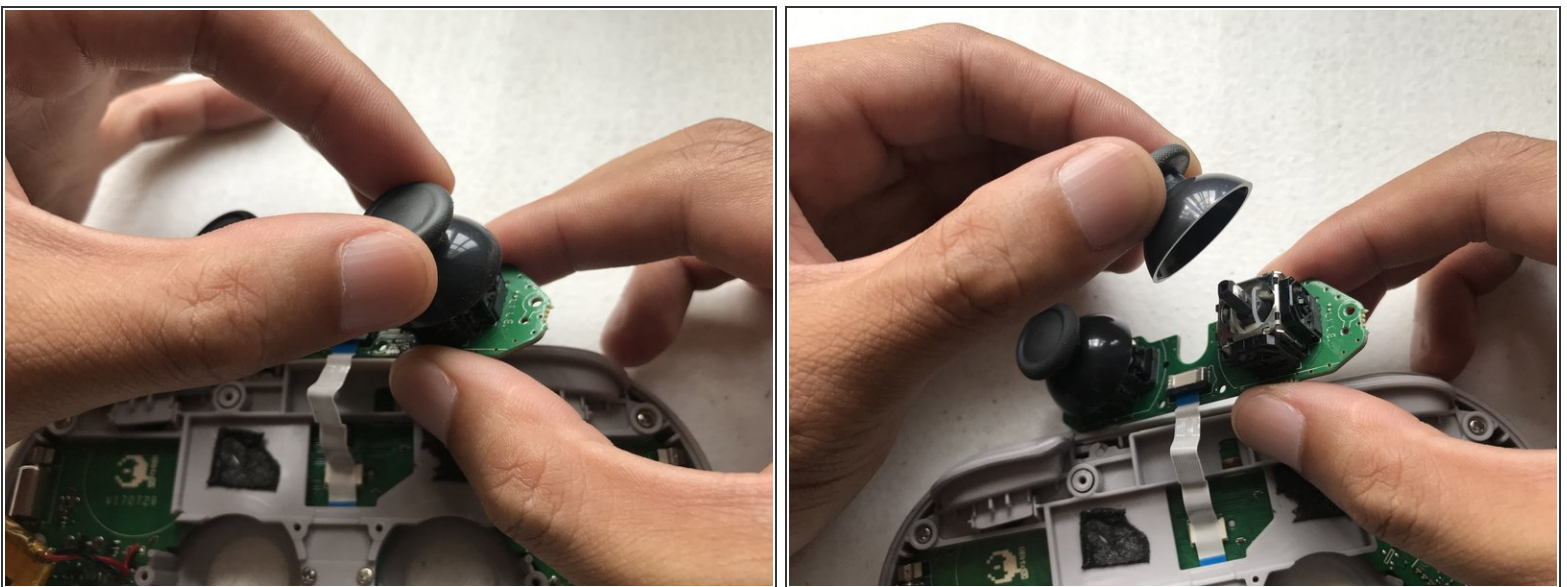
- Unscrew the four #0 Phillips screws that hold the analog board in place.

Step 5 — Lift the Analog Board



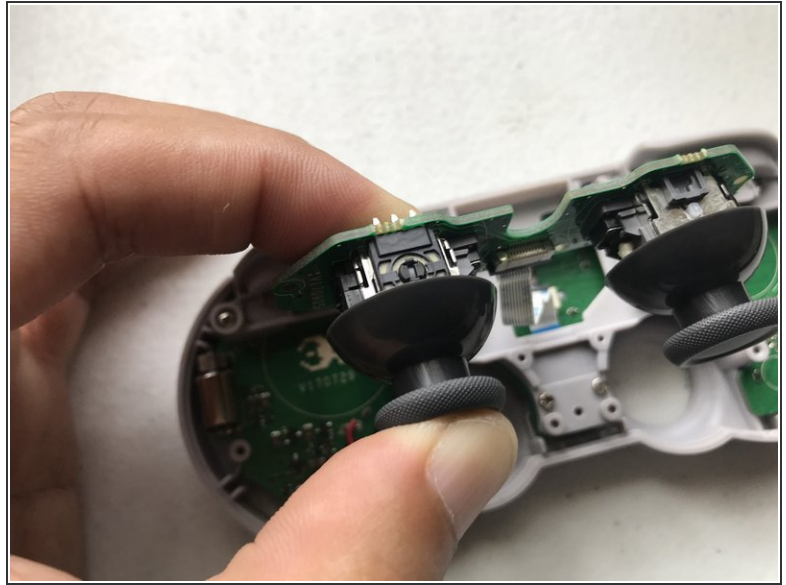
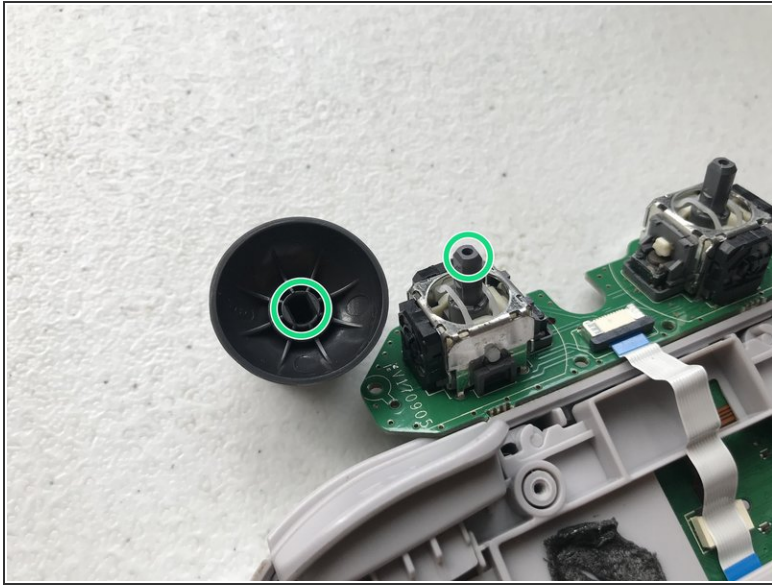
- Lift the analog board assembly by holding onto the edges of the board.
 - You may need to guide the analog sticks to clear the holes in the front panel while lifting the assembly.
- ⚠ Be careful not to pull on the ribbon!
- Flip the board over so that the analog sticks are now facing upwards. Set it above the controller.

Step 6 — Remove the Old Analog Stick Caps



- Hold the analog board assembly along the edges, and *carefully* pull out the **old** analog stick caps one-by-one.

Step 7 — Install the New Caps



- Note the shape of the hole under the replacement analog stick cap and how it matches the shape of the analog stick shaft. Orient them correctly for a proper fit.
- Take your **new** caps and push them into the shaft.
 - Push the cap all the way down until you hear a 'click', which is the analog button being pressed.
- ⚠ Make sure that the analog shaft stays straight and centered while you are pushing down on the cap.
- ℹ The replacement caps sent by 8BitDo seem to be a newer, *better* silicon-coated variant, instead of the old caps that used rubber.

To reassemble your device, follow these instructions in reverse order.