



# 8bitdo N30 Joystick Replacement

Replace the joystick component on the 8bitdo N30 Arcade Stick.

Written By: Carlie Kratz



---

# INTRODUCTION

This guide will show you how to replace the joystick component on the 8bitdo N30 Arcade Stick.

---



## TOOLS:

- [Flathead Screwdriver](#) (1)
  - [Pro Tech Toolkit](#) (1)
-

## Step 1 — Joystick



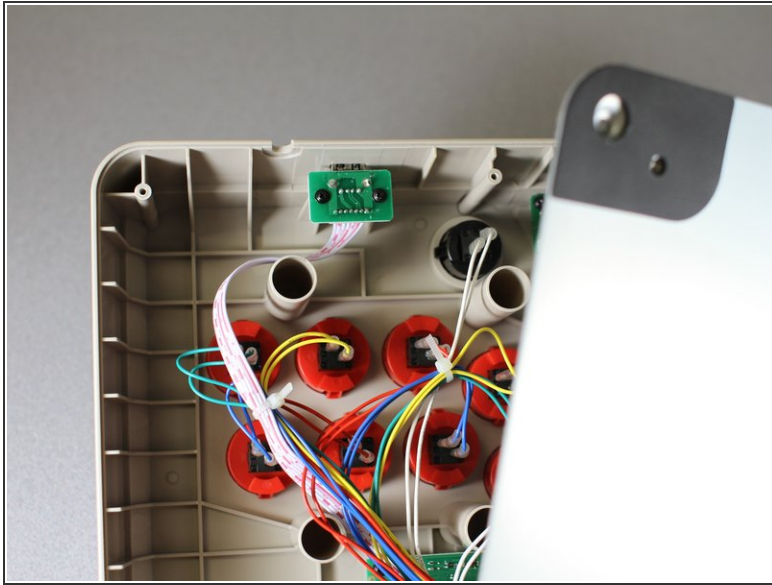
- Turn the device over so that the bottom is facing up.

## Step 2



- Use a Phillips screwdriver to unscrew the ten 3 mm screws on the back.

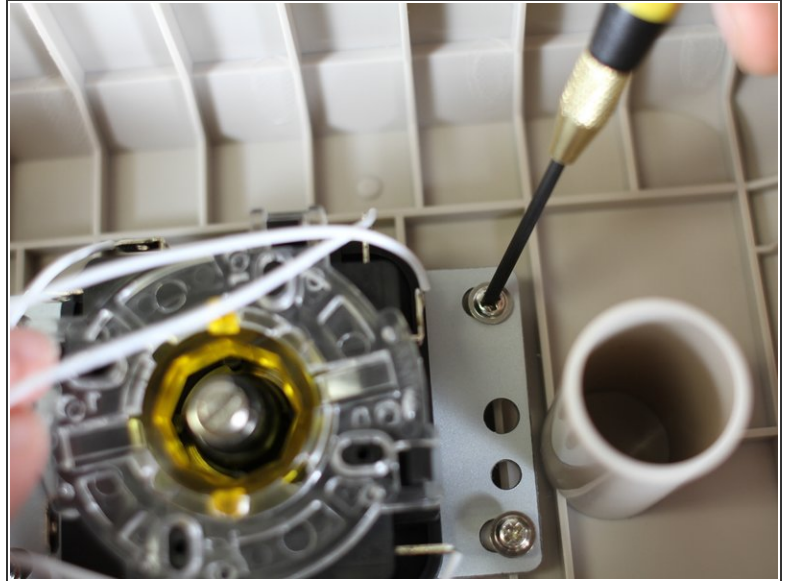
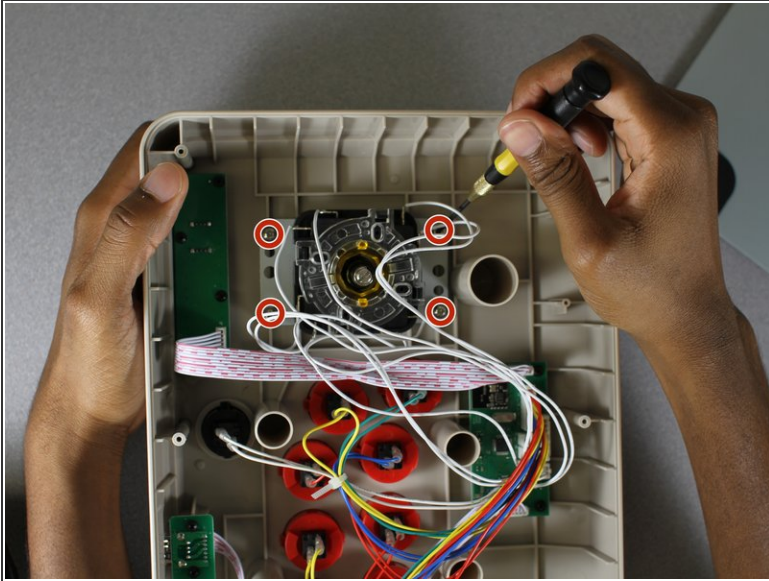
## Step 3



- Hold the arcade stick and pry the back panel away from the device until it comes off.
- ⓘ For assistance in removing the back panel, use the rubber slider indicated in the picture.
- ✦ Remember that you will later be putting the rubber slider back in, before the back panel.

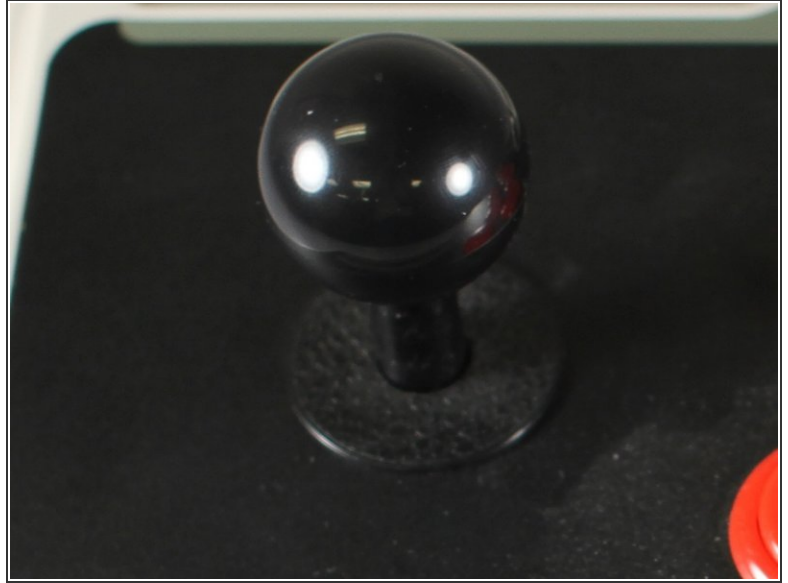
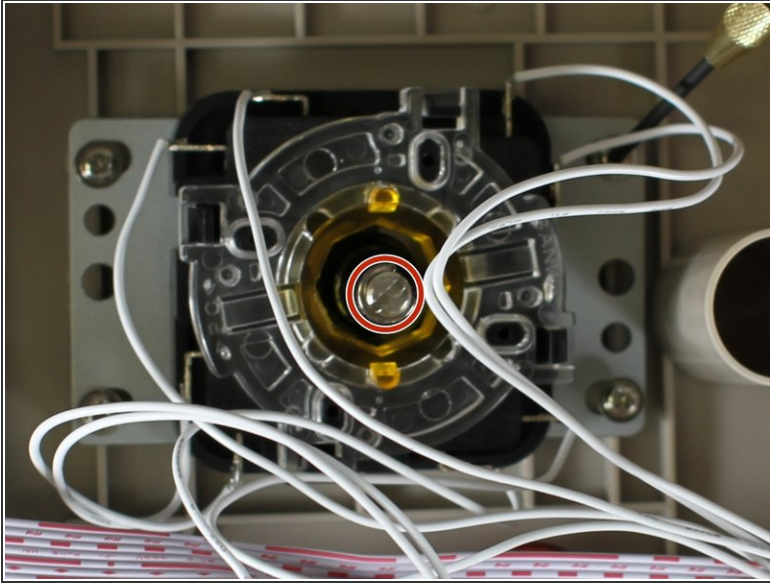


## Step 4



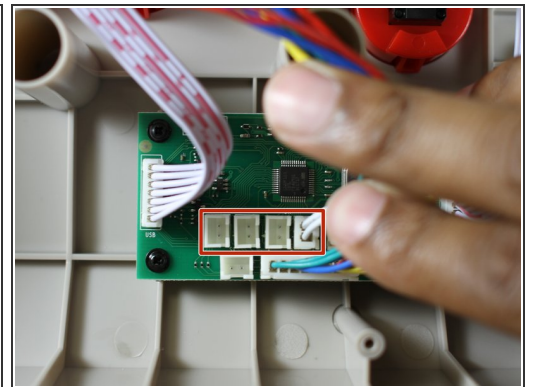
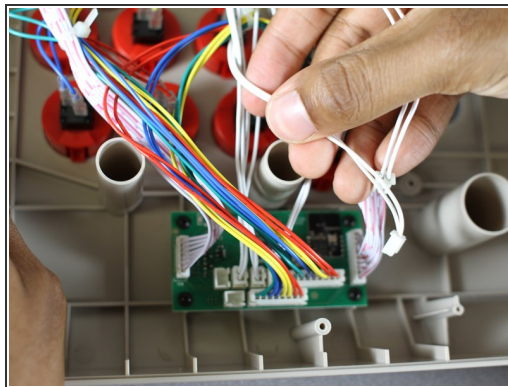
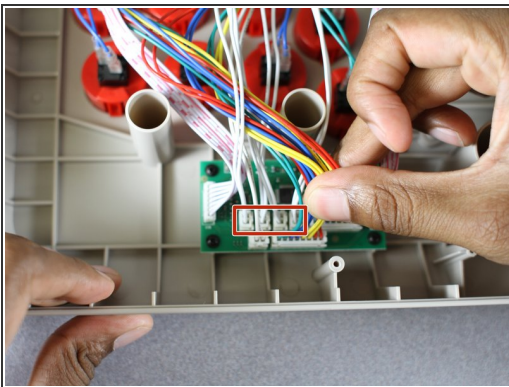
- Locate the back piece of the joystick.
- Unscrew the 4 screws that secure the controller back piece in place.

## Step 5



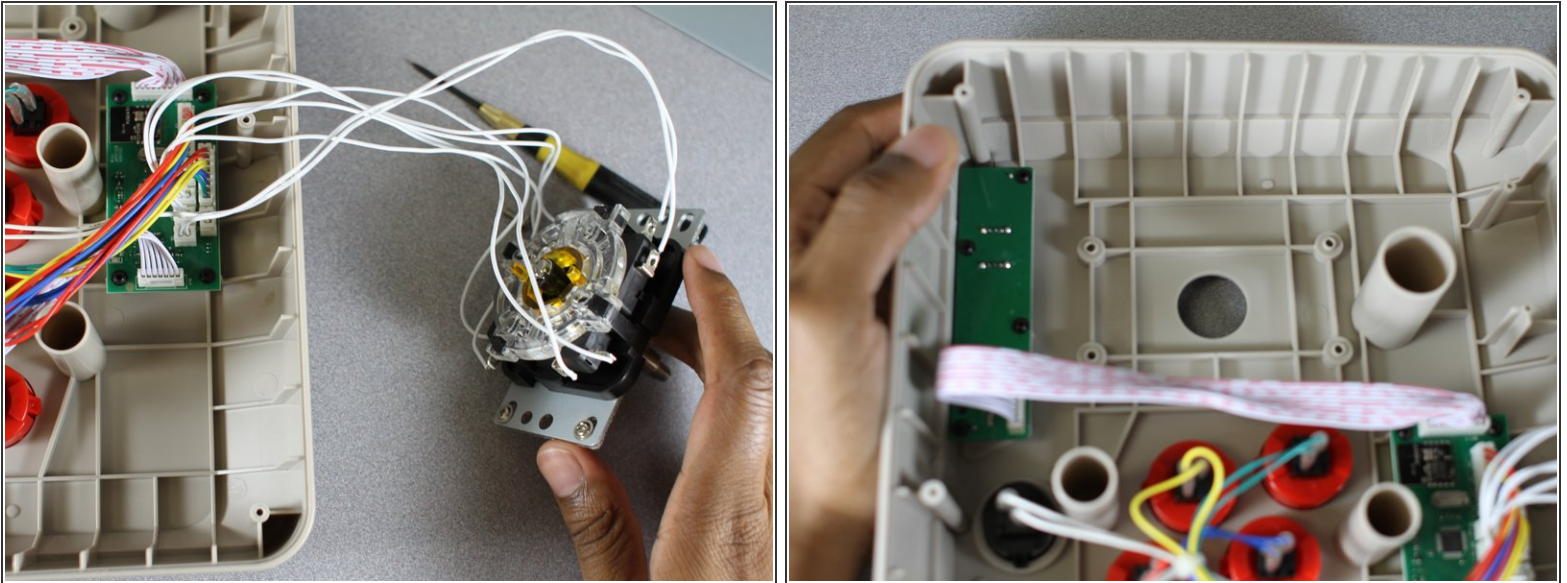
- Use a flathead screwdriver to unscrew the middle screw that holds the ball piece onto the joystick.
- ⓘ Be sure to hold the ball piece while turning the screw left, or counterclockwise.
- ➡ For attaching the ball piece of the new joystick, turn to the right, or clockwise.

## Step 6



- Locate the joystick wires that are attached to the four indicated plugs on the motherboard, and remove them.
- ⓘ In fine print, "left", "down", "up", and "right" are found above the wires that need to be removed.
- ⚠ Take caution and gently disconnect the wires.

## Step 7



- Remove the back piece from the mounting plate.
- ☑ Remember, the four slots indicated is where you will be screwing in the new joystick's back piece.

For the new joystick, follow the steps in reverse order. *Once again, don't forget the rubber slider for the back panel.*

Boot up your favorite PC or Nintendo Switch fighting game and make sure your controls work!