



ACER Aspire E1-572-6870 Back Panel Disassembly

This guide is meant to be a pre-requisite for the fan, keyboard, and display repair guides.

Written By: Cody Lim



INTRODUCTION

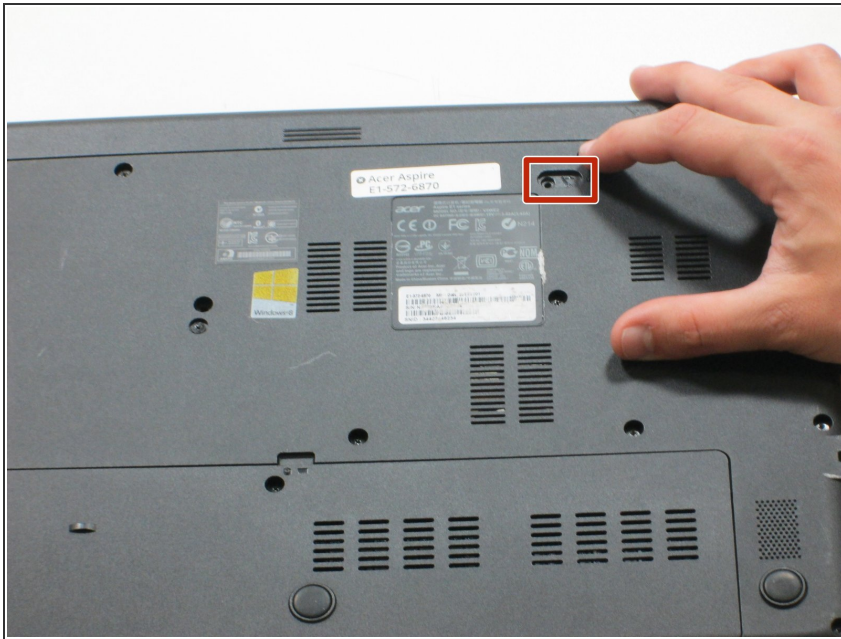
This guide will teach you how to remove the entire back panel to reach the internal components.



TOOLS:

- [Phillips #0 Screwdriver](#) (1)
-

Step 1 — Battery



⚠ Working on your device while it is turned on may result in electric shock. Make sure to shut down and unplug your device before you begin.

- Flip your laptop over so the back panel is facing upwards and locate the lock switch below the battery.

Step 2



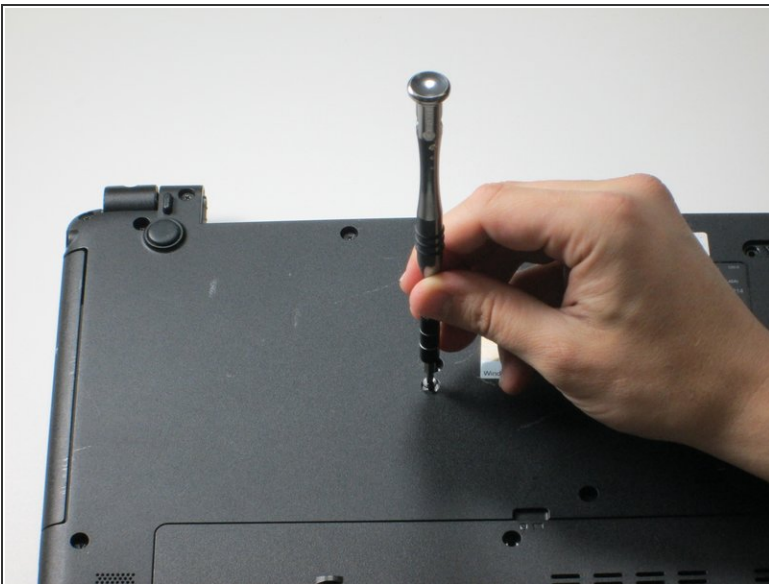
- Slide the lock switch to the right using your finger or another object.
- At the same time, grasp the battery with your other hand and begin to slide it upwards.

Step 3



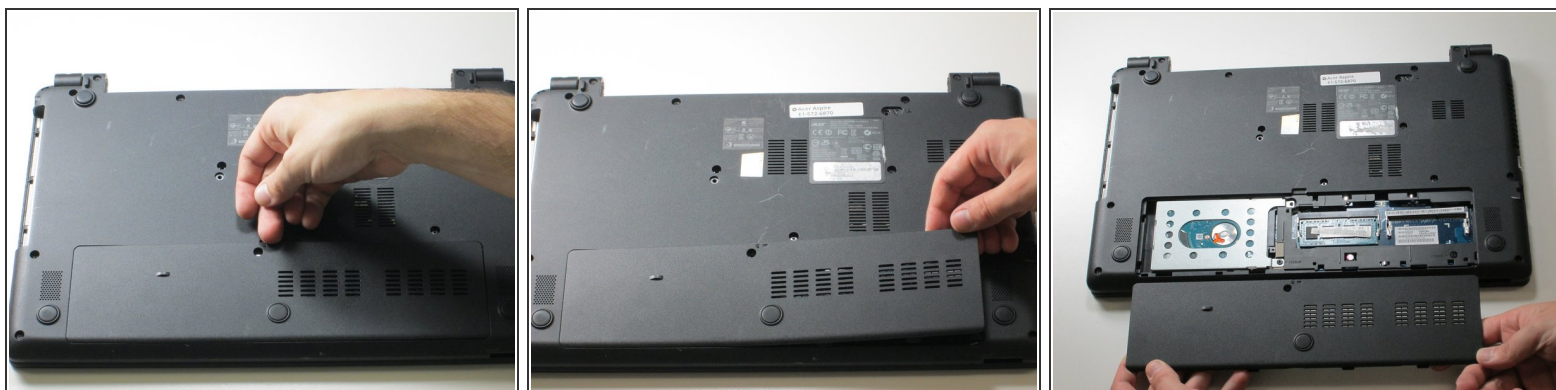
- Continue to hold the switch to the right and pull the battery out until it is completely removed.
- ★ To reinsert or replace the battery, simply line up the tabs on the battery with the laptop and slide it straight back in. There is no need to move the lock switch.

Step 4 — Back Panel



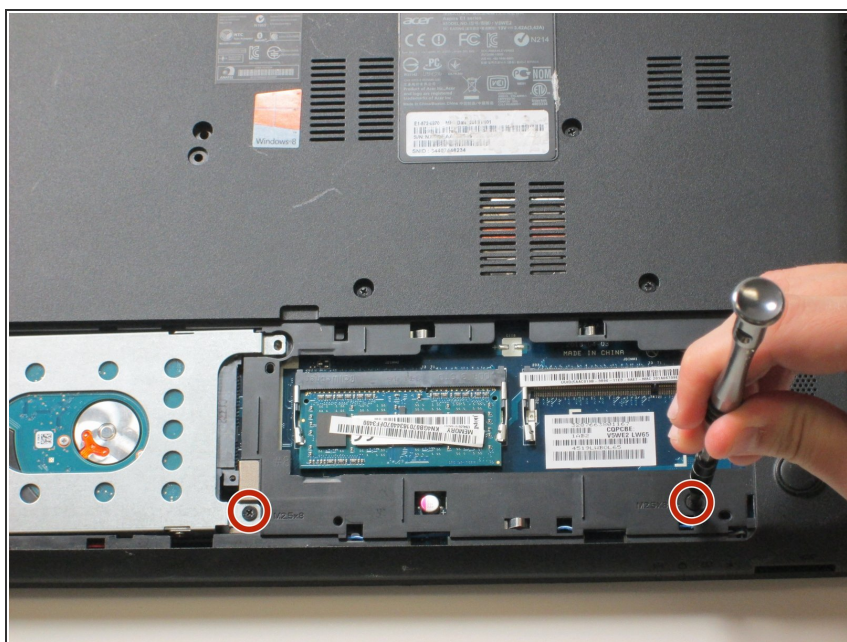
- Remove the 16 2.5 x 8mm Phillips #0 screws from the back panel.

Step 5



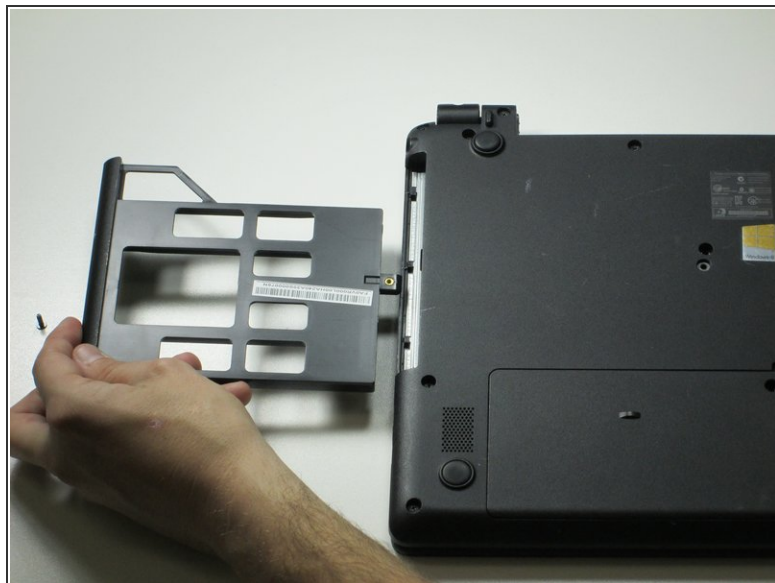
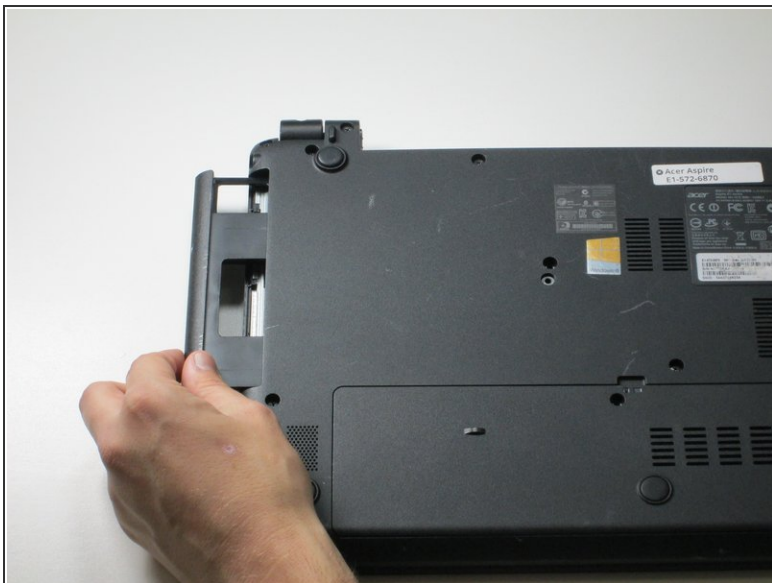
- Remove the back panel by carefully disengaging it around the edges and then pull upwards.

Step 6



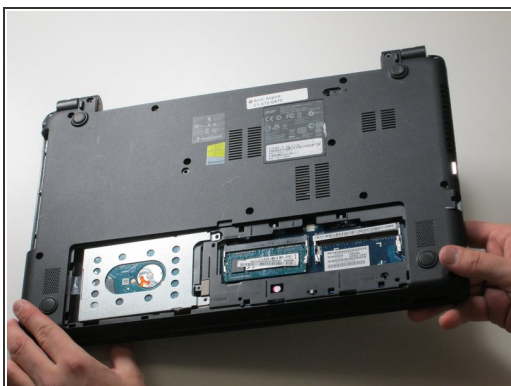
- Unscrew the two remaining 2.5 x 8mm Phillips #0 screws from inside the bottom panel as designated in the image.

Step 7



- Slide out the plastic insert located on the left side, and remove, before returning the laptop to the face-up position.

Step 8



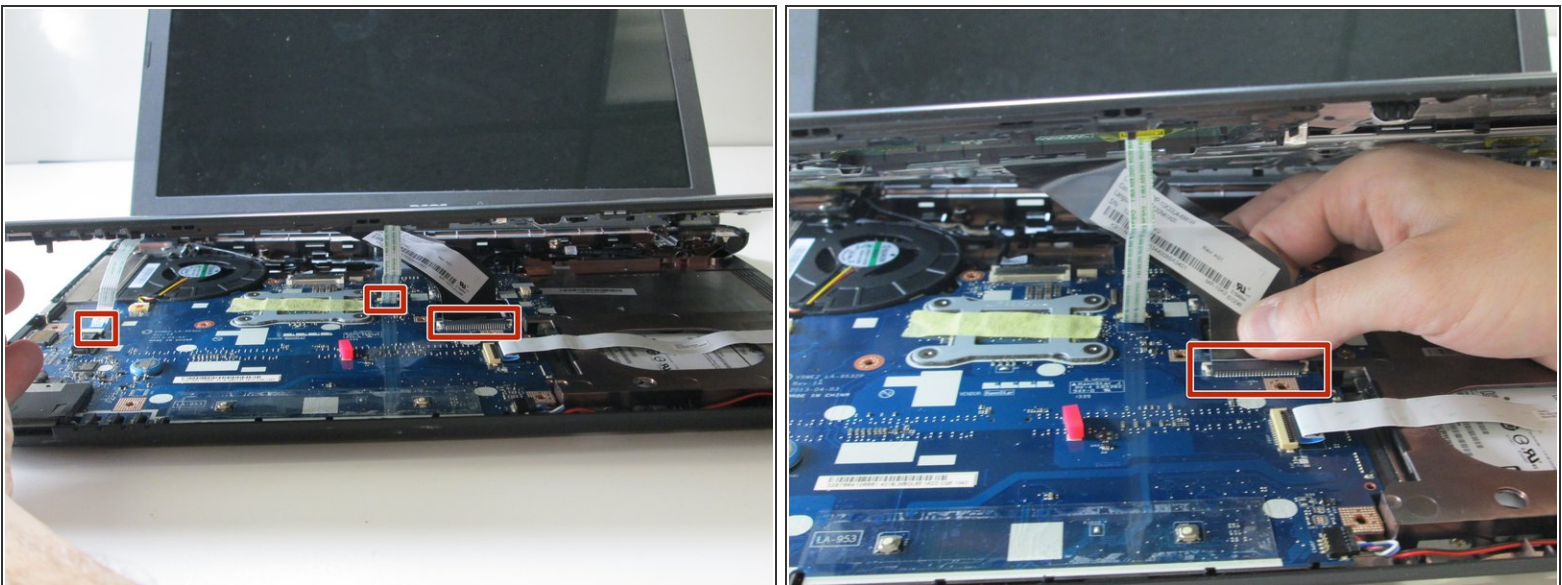
- Carefully flip your laptop back over and open it up.

Step 9



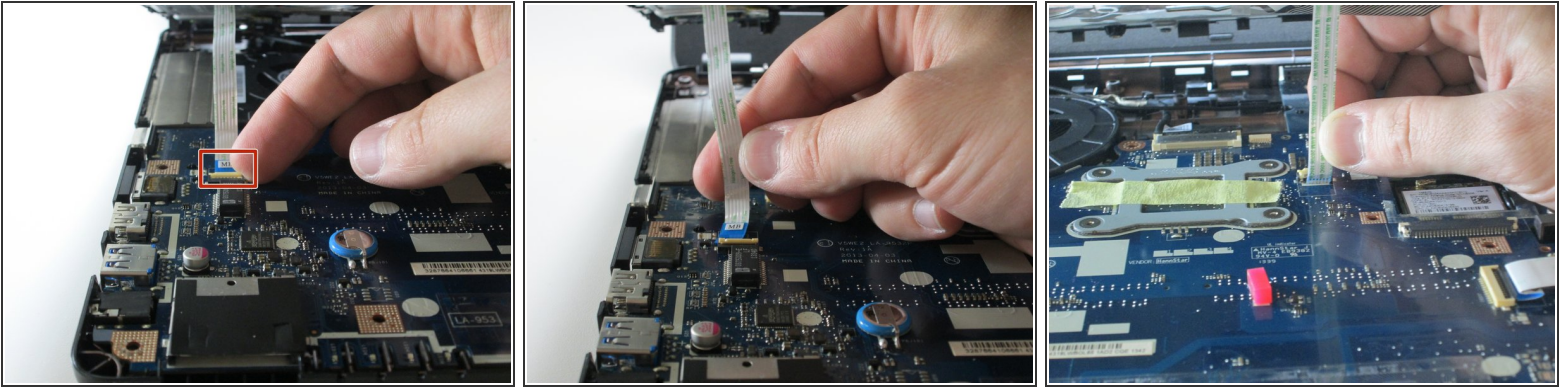
- ⓘ Carefully detach the top panel of the laptop and slowly lift it up to reveal the internal components.

Step 10



- Locate the three ribbons that need to be unplugged, so the two halves of the device may be separated.
- Unplug the large ribbon by sliding the retainer clip backward (toward the hinges), then gently pulling the cable out of the connector.

Step 11



- Remove the other two smaller ribbons by flipping open the small plastic tab that holds the ribbon in the connector.
- Then simply pull the free ribbon out.

Step 12



- Lift the top panel all the way up and your laptop is now split into its two distinct halves.

To reassemble your device, follow these instructions in reverse order.