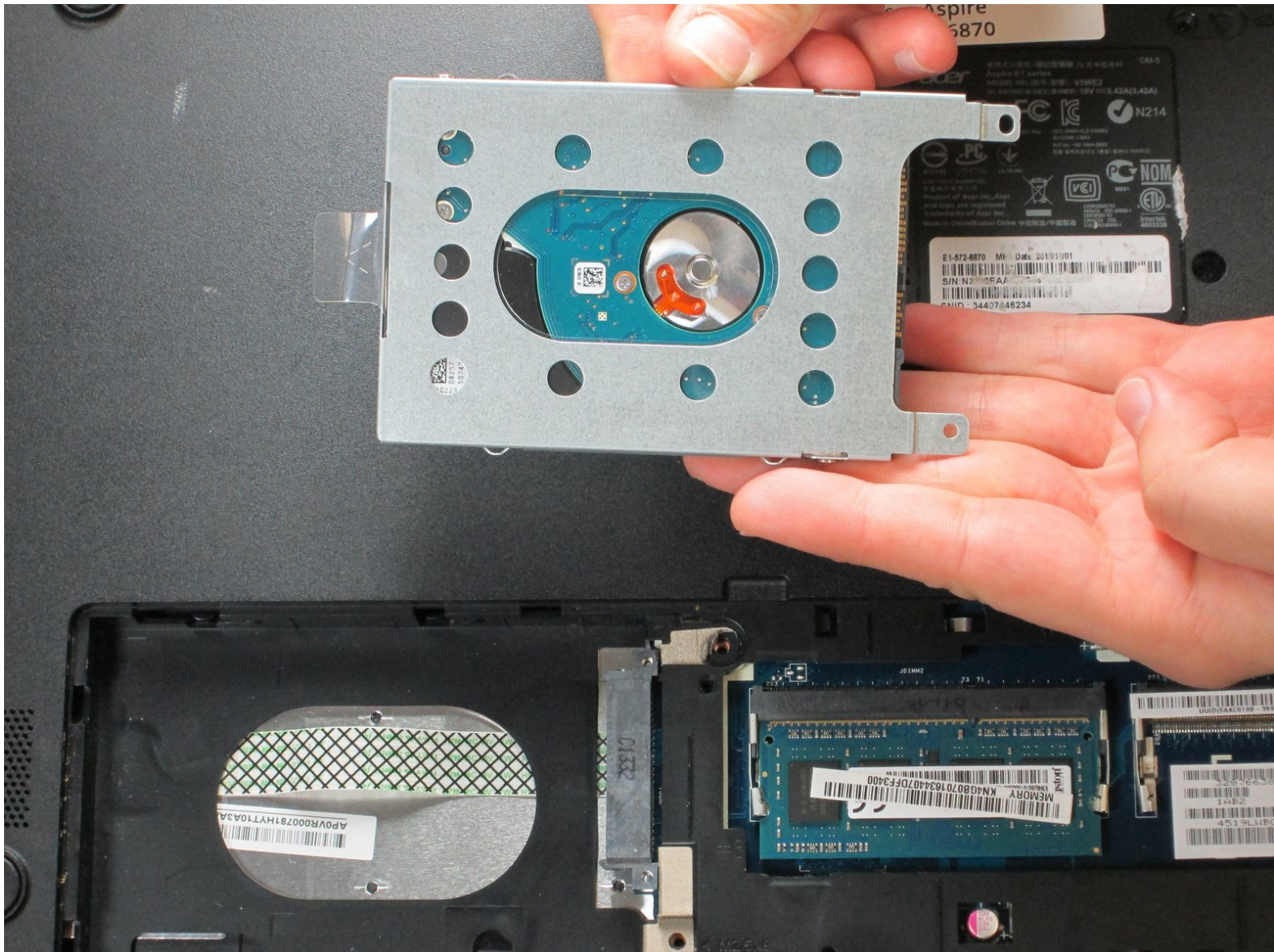




ACER Aspire E1-572-6870 Hard Drive (HDD) Replacement

Replacing the Hard Drive (HDD) in your ACER Aspire E1-572-6870.

Written By: Cody Lim



INTRODUCTION

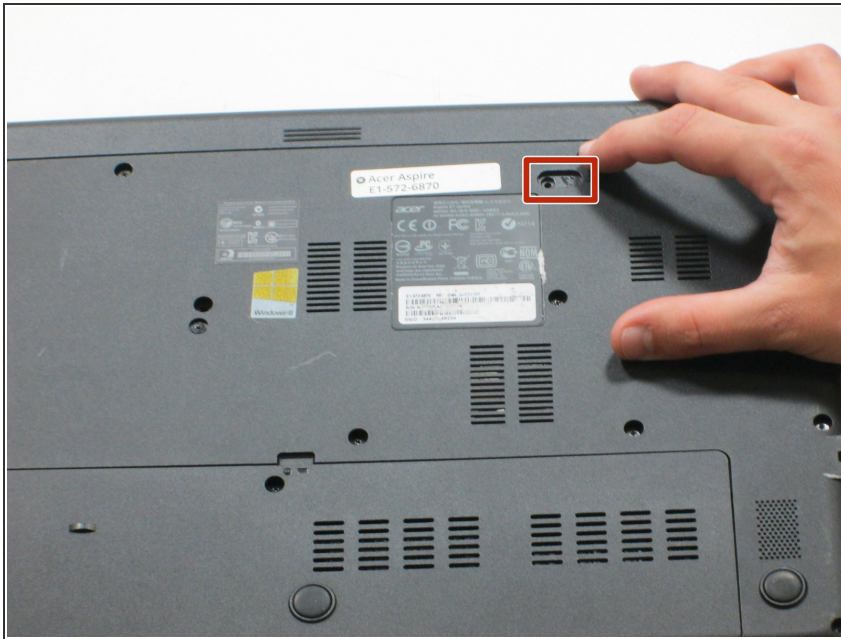
Using this guide will allow you to replace your hard drive.



TOOLS:

- [Phillips #0 Screwdriver](#) (1)
 - [iFixit Opening Tools](#) (1)
-

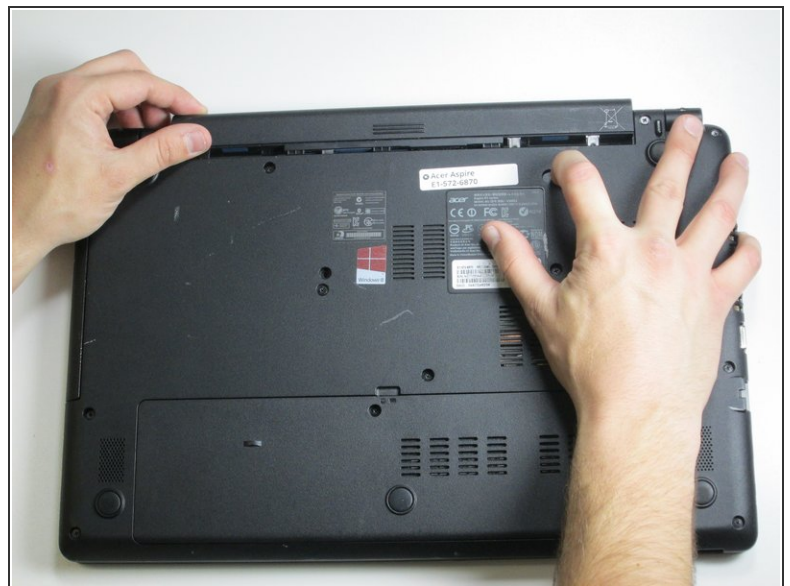
Step 1 — Battery



⚠ Working on your device while it is turned on may result in electric shock. Make sure to shut down and unplug your device before you begin.

- Flip your laptop over so the back panel is facing upwards and locate the lock switch below the battery.

Step 2



- Slide the lock switch to the right using your finger or another object.
- At the same time, grasp the battery with your other hand and begin to slide it upwards.

Step 3



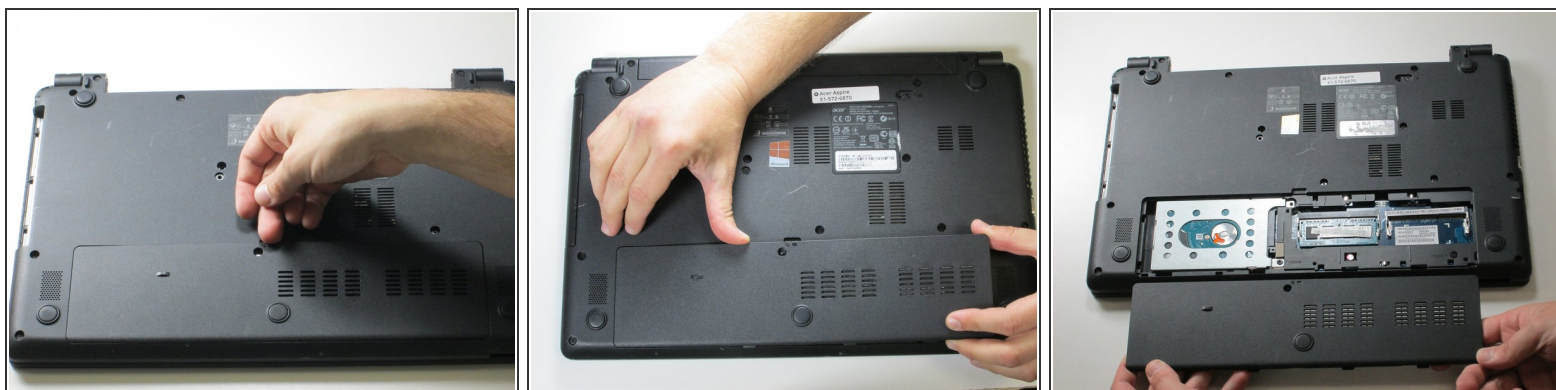
- Continue to hold the switch to the right and pull the battery out until it is completely removed.
- ★ To reinsert or replace the battery, simply line up the tabs on the battery with the laptop and slide it straight back in. There is no need to move the lock switch.

Step 4 — Hard Drive (HDD)



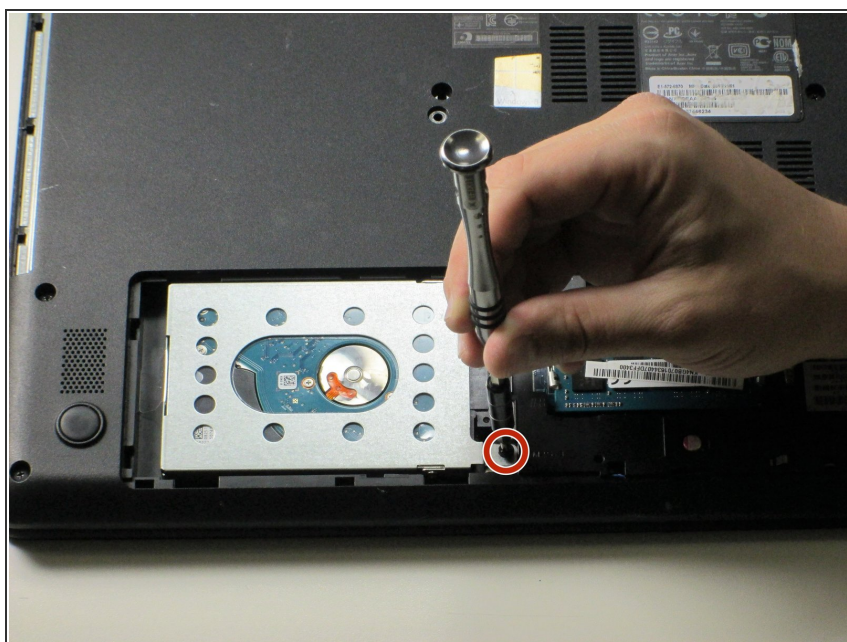
- Unscrew the one 8mm Phillips #0 screw from the bottom panel.

Step 5



- Remove the back panel by carefully disengaging it around the edges and then pulling upwards.

Step 6



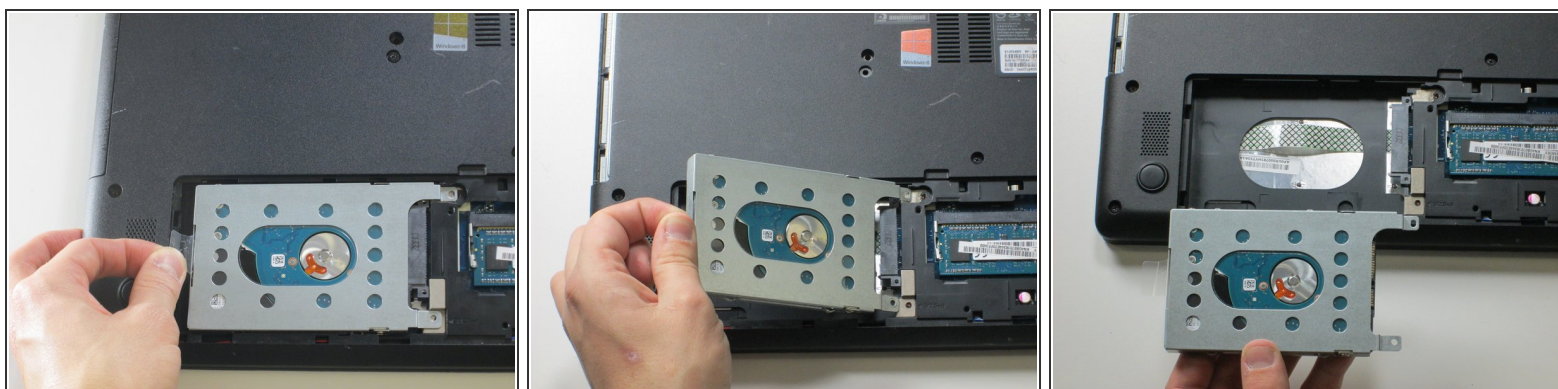
- Remove the other 8mm Phillips #0 screw holding the hard drive to the rest of the laptop.

Step 7



- Slide the hard drive to the left using a plastic opening tool.

Step 8



- To remove the hard drive, pull up and to the left using the plastic tab as shown on the left side of the hard drive.

To reassemble your device, follow these instructions in reverse order.