



# ACN Iris WG4K Video Camera Replacement

Replace your malfunctioning video camera.

Written By: Itze Kenney



# INTRODUCTION

The video camera is an essential part of the Iris WG4K video phone if you plan to make video calls. Sent video calls that result in black or glitched images could be a result of a faulty camera. This guide will explain step-by-step how to remove the camera from the phone so that you can replace it.



## TOOLS:

- [Spudger](#) (1)
  - [Phillips #0 Screwdriver](#) (1)
-

## Step 1 — Handset



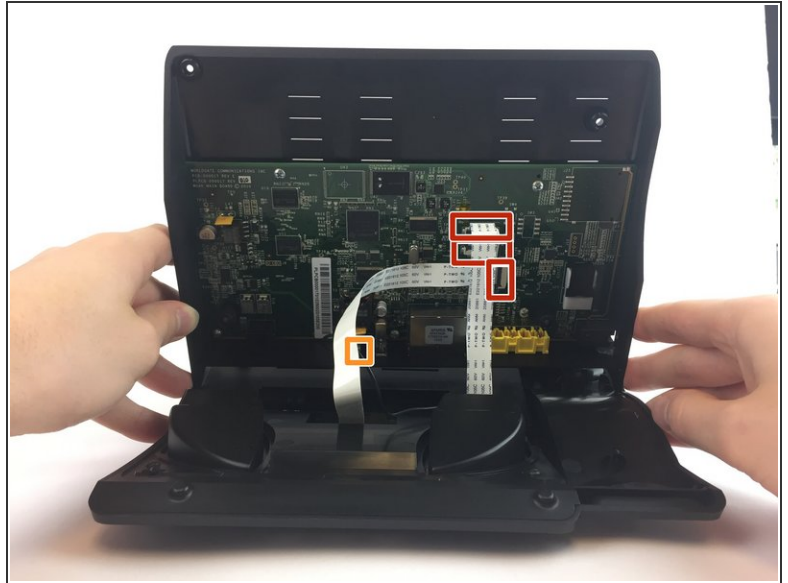
- Press upwards with your index finger on the 4P4C connector as shown in the image.
- Pull the connector gently out of its socket.

## Step 2 — Lower Case



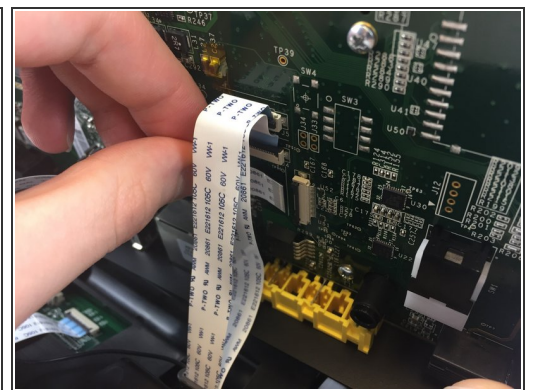
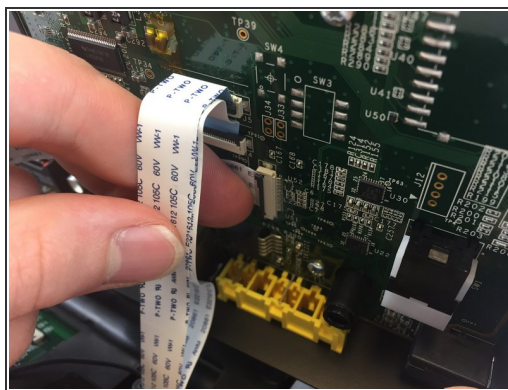
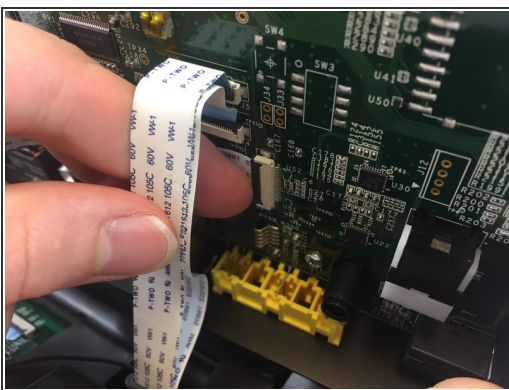
- Flip the main body of the video phone so that the bottom is facing up.
- Use the Phillips #0 Screwdriver to remove the four Phillips head screws (6 mm) highlighted by the red circles.

## Step 3



- Lift the back case upwards to expose the inside components.
- Red rectangles indicate the three ribbon cables.
- The orange square indicates the blade connector.

## Step 4



- Disconnect the three ribbon cables from their insulation-displacement connectors by flipping up the black plastic clip.
- Gently pull the ribbon cables out of their insulation-displacement connectors.



## Step 5



- Disconnect the blade connector from the blade receptacle by gripping the exposed area of the blade connector.
- Gently pull the blade connector out of the blade receptacle.

## Step 6



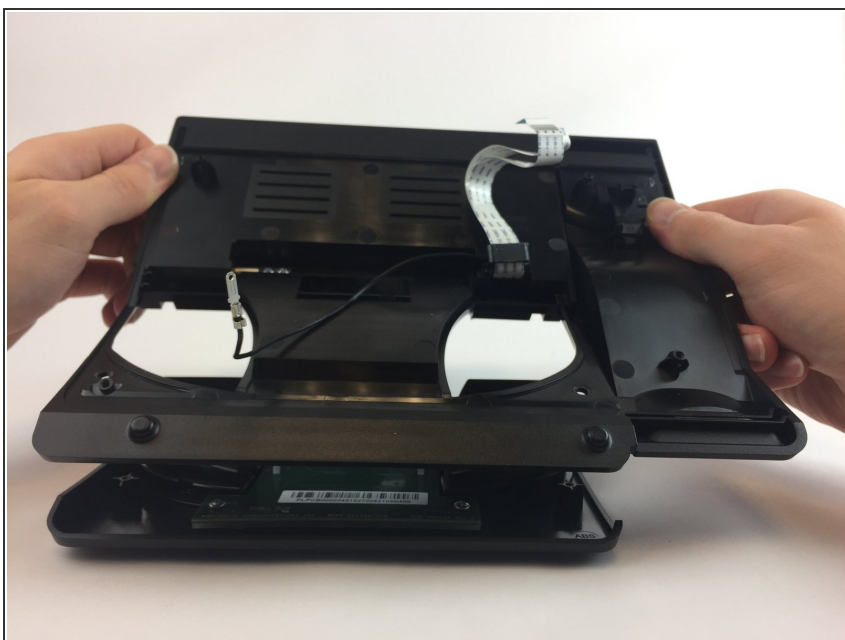
- Gently lift up the lower case to separate it from the top case.

## Step 7 — Blade Connector



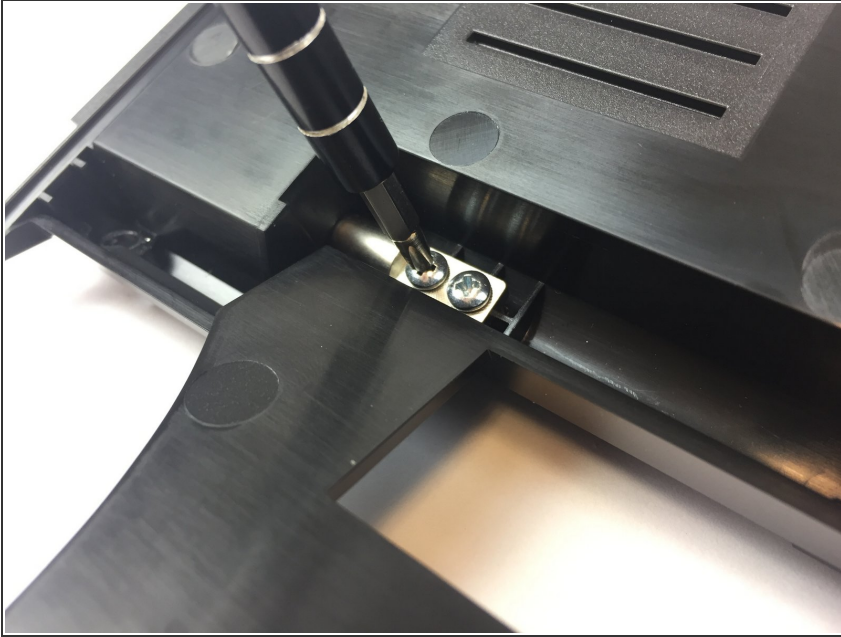
- Use the Phillips #0 Screwdriver to remove the four Phillips head screws (6 mm) highlighted by the red circles.

## Step 8



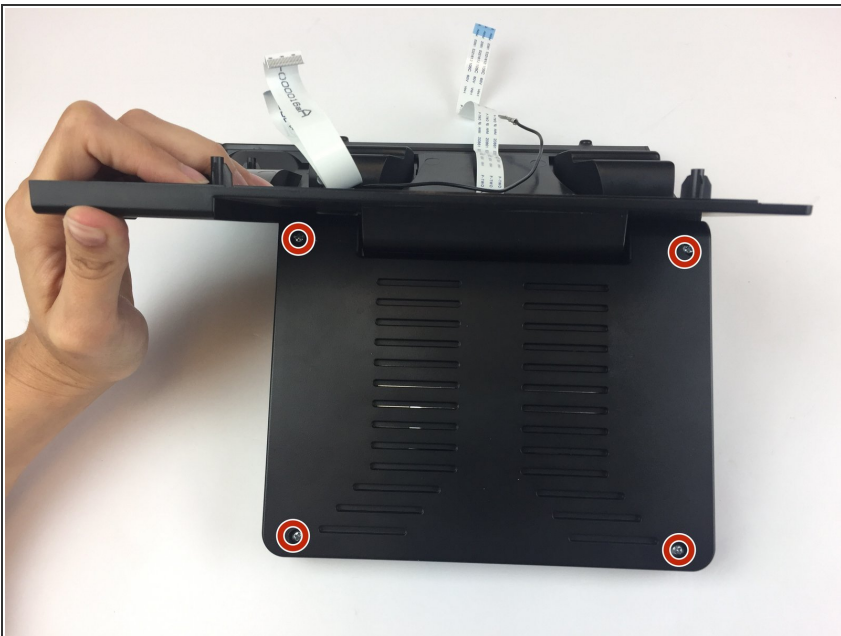
- Gently lift up on the upper case to separate it from the keypad/speaker panel.

## Step 9



- Use the Phillips #0 Screwdriver to remove the two Phillips head screws (5 mm) located on the upper case.

## Step 10



- Rotate the top case 180 degrees so that the video screen is closest to you.
- Lift up the bottom up so that it is perpendicular to the table (this helps you reach the two top screws).
- The four Phillips head screws (6 mm) are highlighted by the red circles.

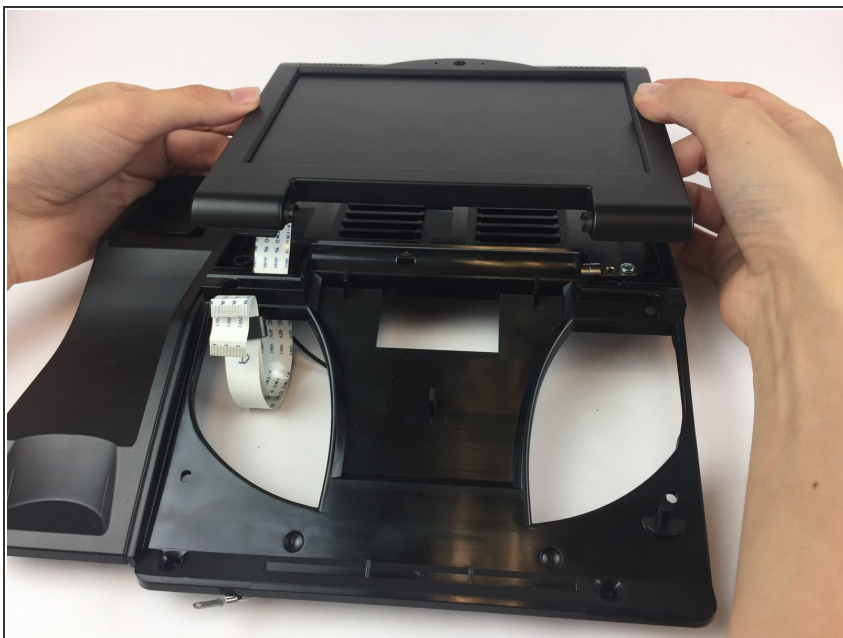


## Step 11



- Use the Phillips #0 Screwdriver to remove the four Phillips head screws (6 mm).

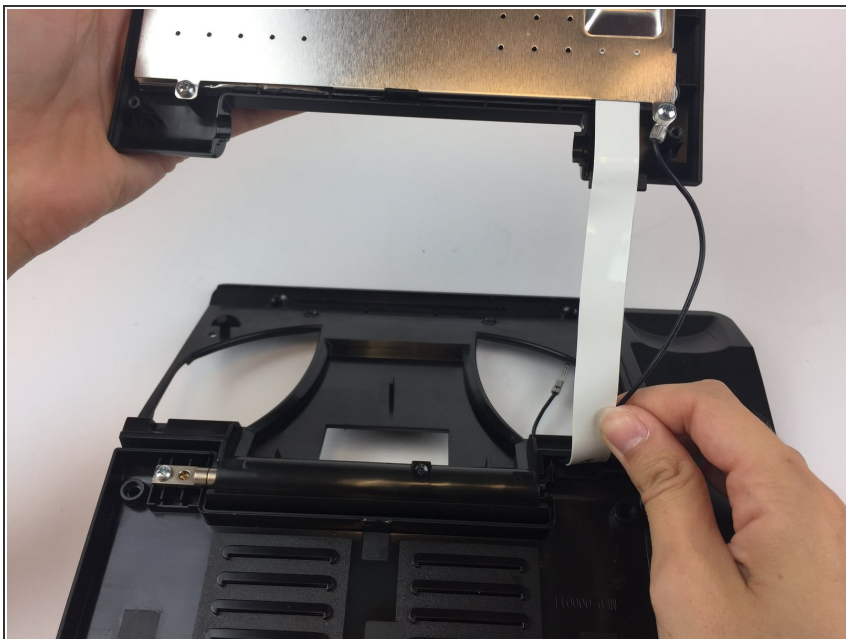
## Step 12



- Flip the top case so that the video screen is facing up.



## Step 13



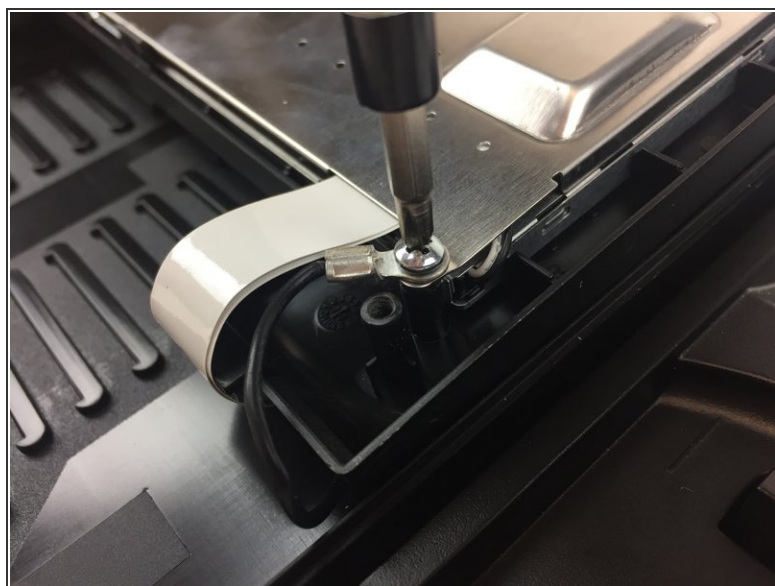
- Rotate the top case 180 degrees.
- Gently lift up on the video screen and the blade and ribbon connector to give you more slack to work with.

## Step 14



- Place the video screen face down to expose the two screws. The screws are indicated by the red circles.

## Step 15



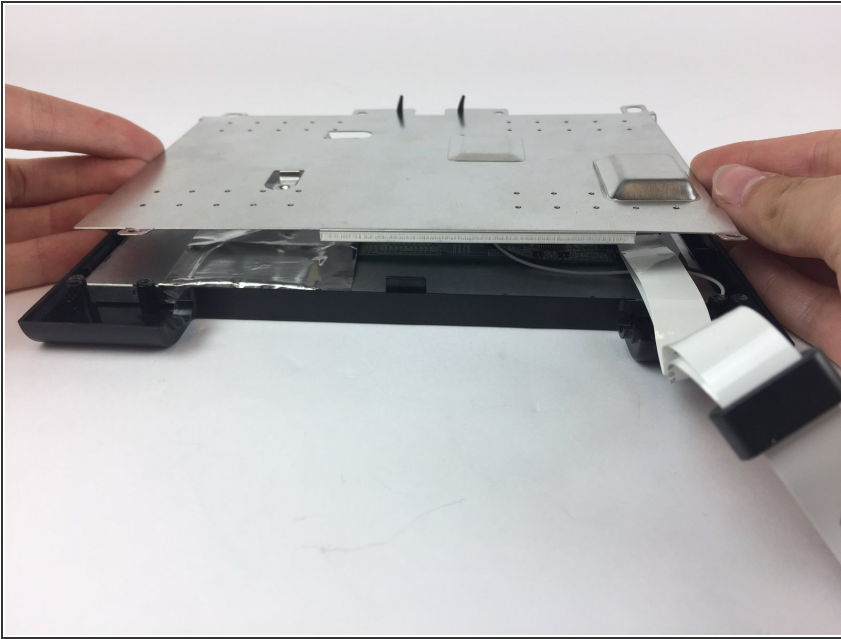
- Use the Phillips #0 Screwdriver to remove the two Phillips head screws (6 mm)

## Step 16



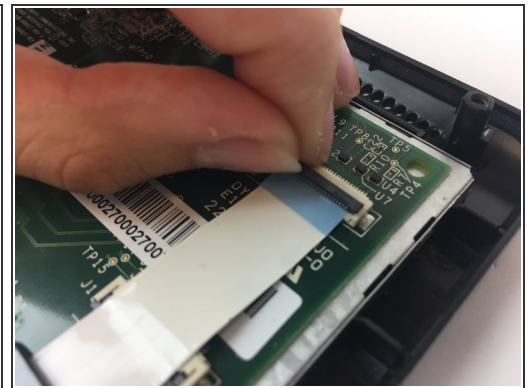
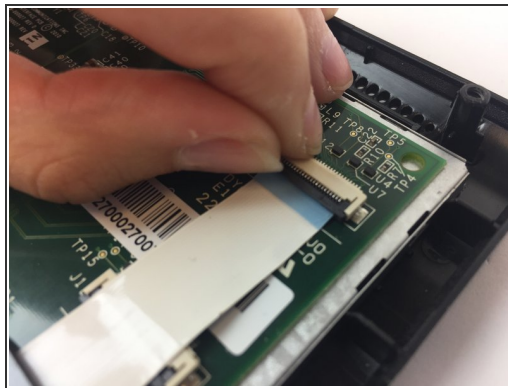
- Pull the ribbon connector and blade connector through the top case.

## Step 17 — Video Screen Ribbon Cable



- Note that the video screen is no longer attached to the top case, place it on a flat surface.
- Gently lift off the silver casing.

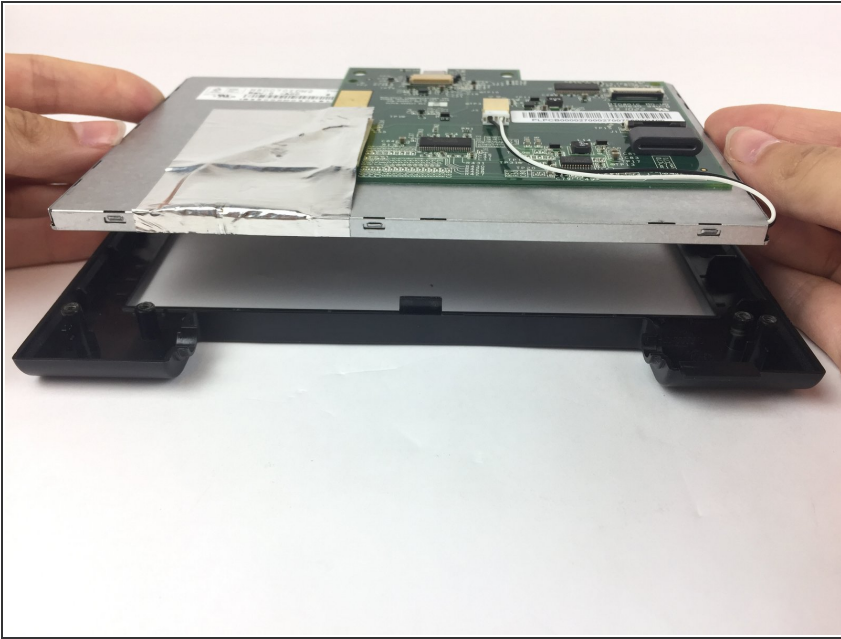
## Step 18



- The two ribbon connectors are indicated by the red rectangles.
- Disconnect the two ribbon cables from their insulation-displacement connectors by flipping up the black plastic clip.
- Gently pull out the ribbon cables. Gently pull out the ribbon cables.

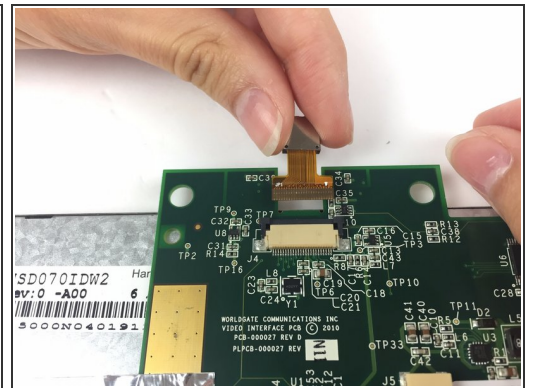
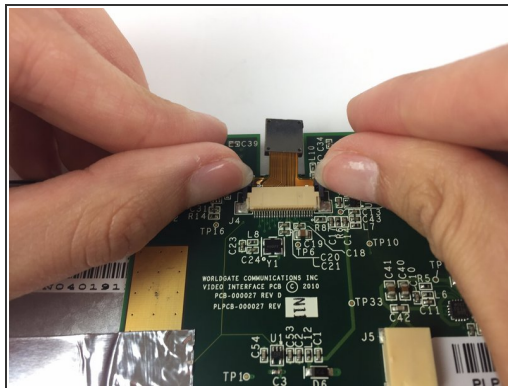
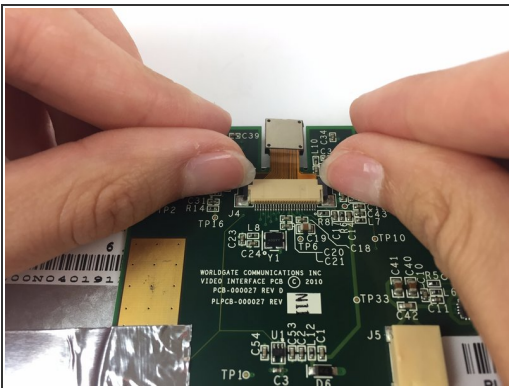


## Step 19 — Video Screen



- Gently lift the video screen out of its case.

## Step 20 — Video Camera



- Flip the video screen over so that the screen itself is face-down on a flat surface to expose the camera.
- Push up on the two clips located on the right and left side of the video camera simultaneously.
  - Gently pull the camera out.

To reassemble your device, follow these instructions in reverse order.