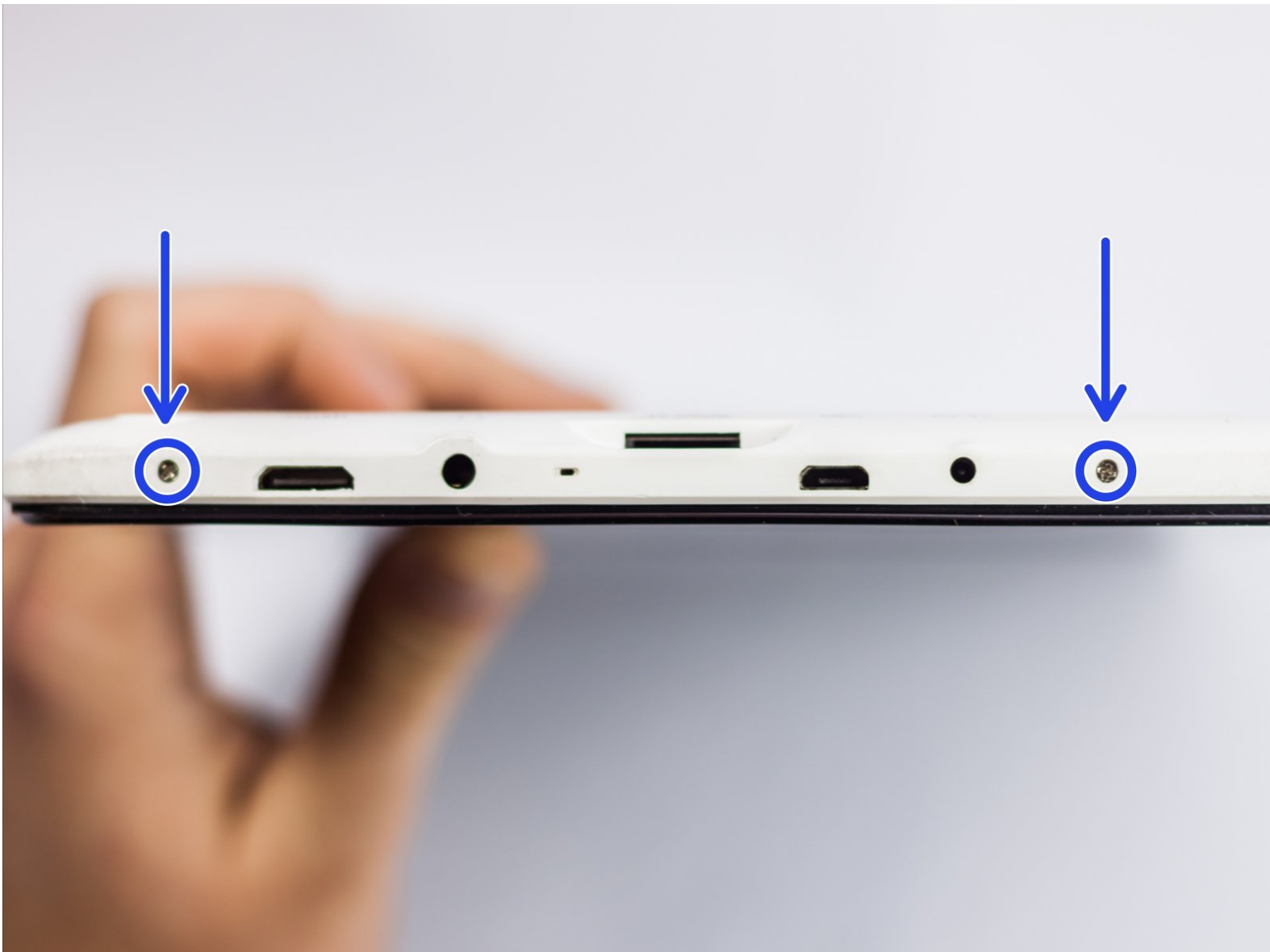




# AKASO KingPad A90 Battery Replacement

This guide will show you how to replace the Battery Unit on the AKASO KingPad A90 tablet.

Written By: Daniel Garcia



## INTRODUCTION

The battery can sometimes stop charging or short and must be replaced in order to turn on and function again.



### TOOLS:

- [Tweezers](#) (1)
- [iFixit Opening Tools](#) (1)
- [Phillips #000 Screwdriver](#) (1)
- [Soldering Workstation](#) (1)
- [Spudger](#) (1)



### PARTS:

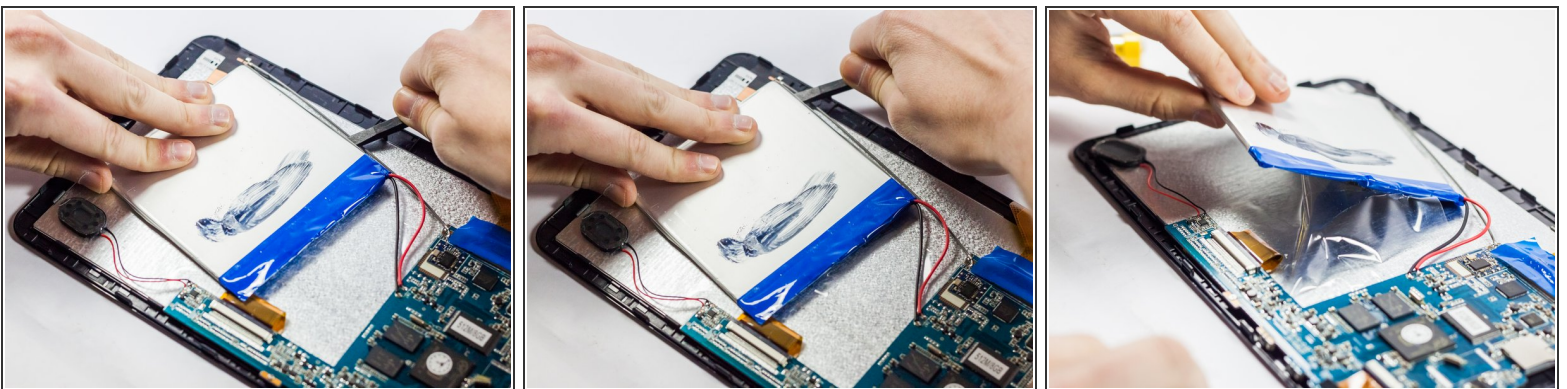
- [AKASO KingPad A90 Battery](#) (1)

## Step 1 — Battery



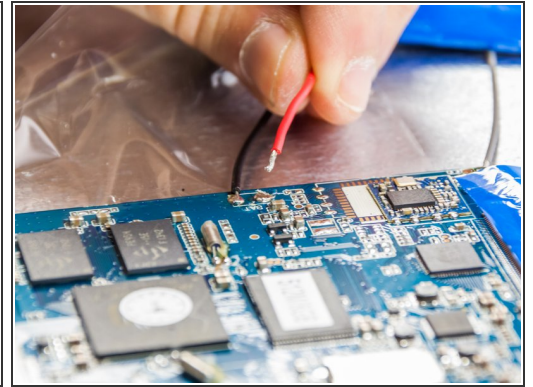
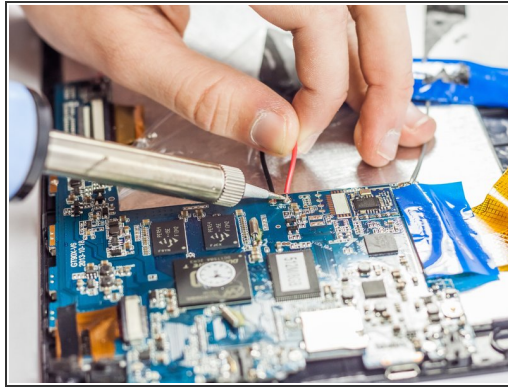
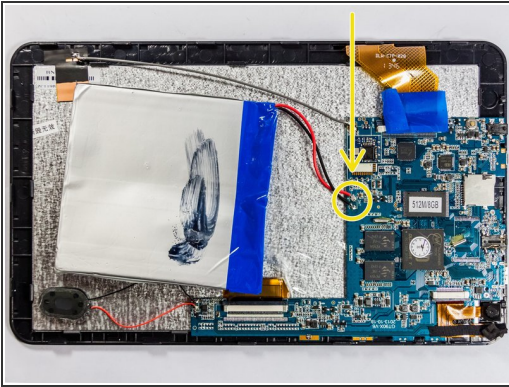
- Remove screws.
- Insert spudger tool on the middle of the left side, between the white and black plastic.
- Slide in a plastic opening tool and use it to further pull the back off.
- Work your way around the edge of the tablet with the plastic opening tool and insert more as needed.
- Pull off the back cover.

## Step 2



- Using the black plastic spudger tool, insert it under a corner of the battery.
- Work your way around the edges to pry the battery and loosen it from the adhesive.
- Remove the battery.

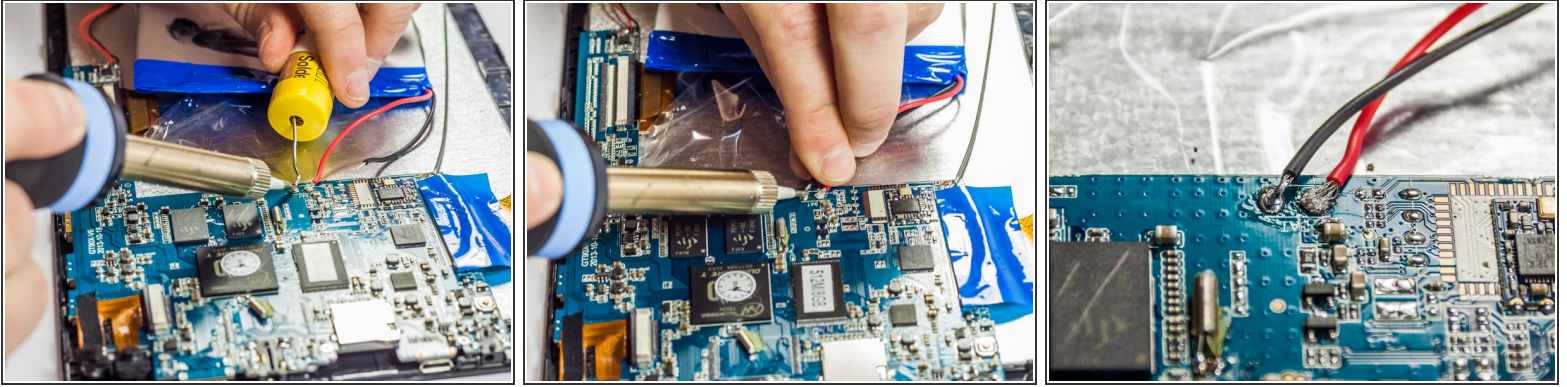
## Step 3



- Locate the battery unit solder points and note where it is attached to the motherboard.
- Plug in your soldering iron/pen and wait the required amount of time to heat up.
- ⚠ Be careful with the iron as the tip is very hot and it could burn you or the tablet
- Apply a small amount of pressure with the iron on the solder points until the joints come loose and the wires move freely away from the board
- Remove the battery unit



## Step 4

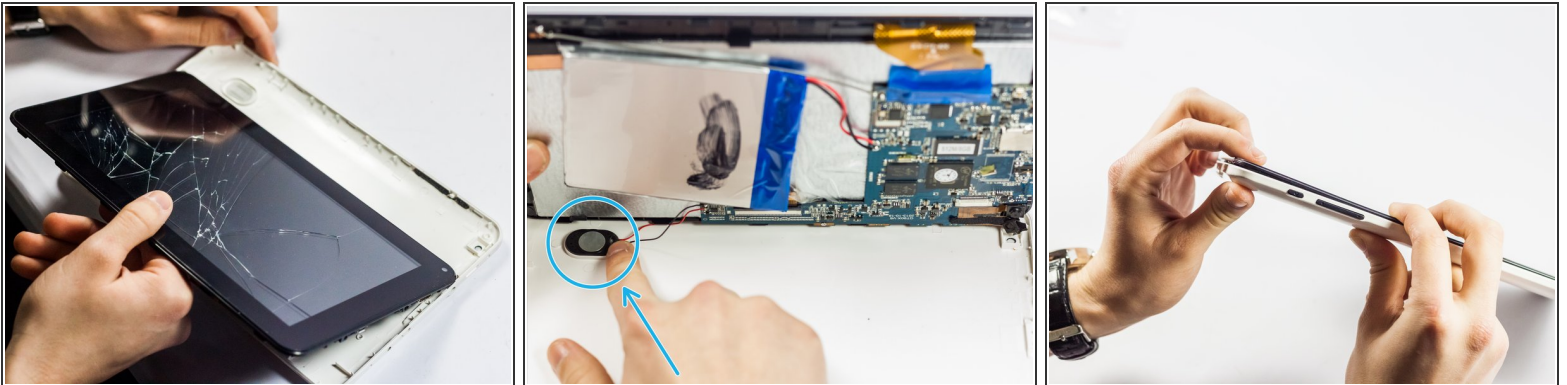


- Locate the red and black wire ends of your new battery
- Take your solder out and place it on the point with the wire
- Use the iron/pen to slowly melt a small piece of solder onto the point and let it solidify.

⚠ Be careful not to use too much solder as a large blob could result in a short on your device

- Repeat this step for the other point

## Step 5



- Replace the back cover with the new part in place.
- Gently press the speaker into place.

⚠ Don't let the volume rocker unit fall out of place.

- Replace the screws.

