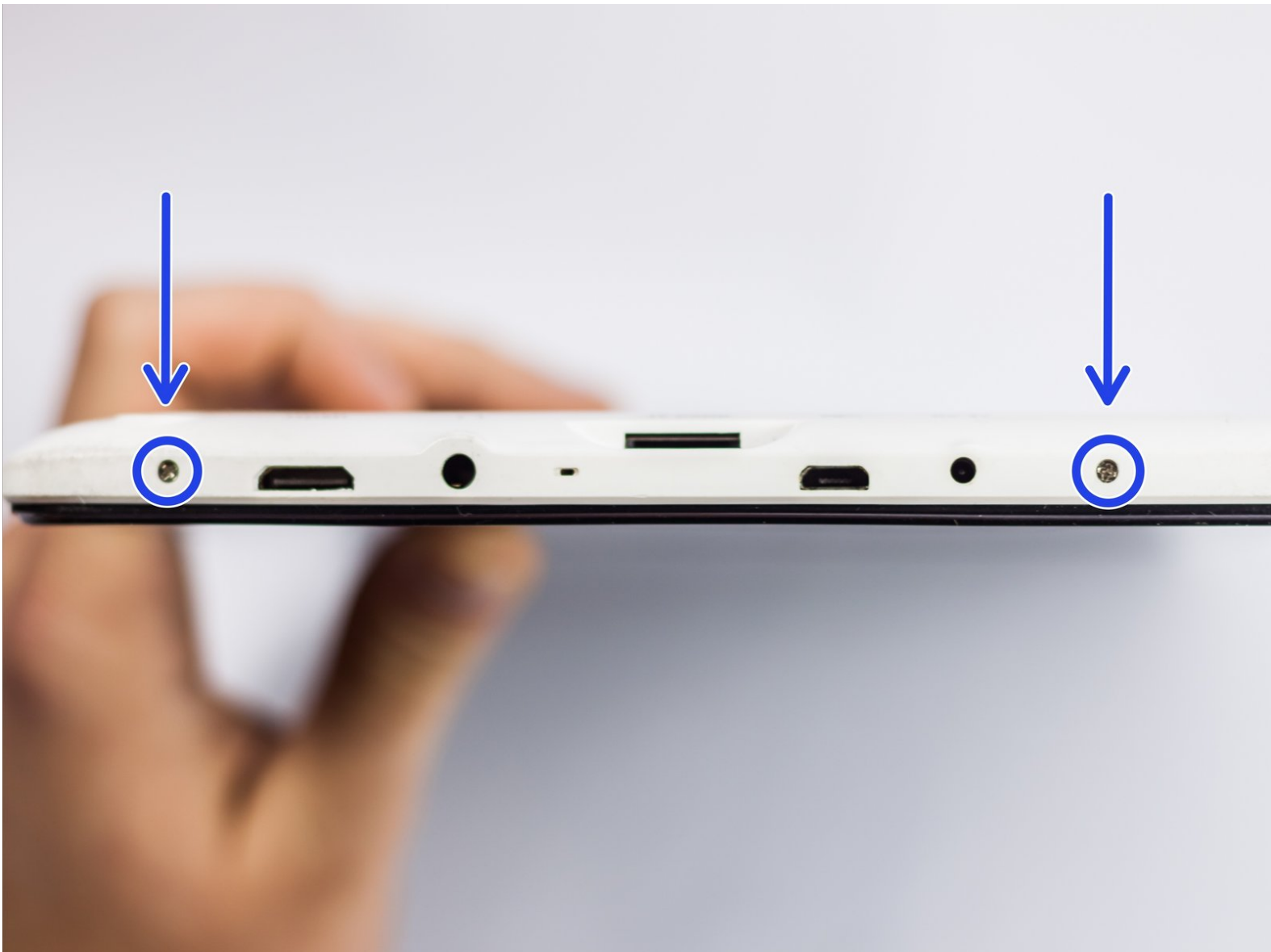




AKASO KingPad A90 Camera (Rear and Front) Unit Replacement

This guide will show you how to replace the Camera (Rear and Front) Unit on the AKASO KingPad A90 tablet.

Written By: Miles



INTRODUCTION

The front and rear cameras can sometimes break or malfunction, and must then be replaced to continue to be able to take pictures and video.



TOOLS:

- [Tweezers](#) (1)
- [iFixit Opening Tools](#) (1)
- [Phillips #000 Screwdriver](#) (1)
- [Soldering Workstation](#) (1)
- [Spudger](#) (1)



PARTS:

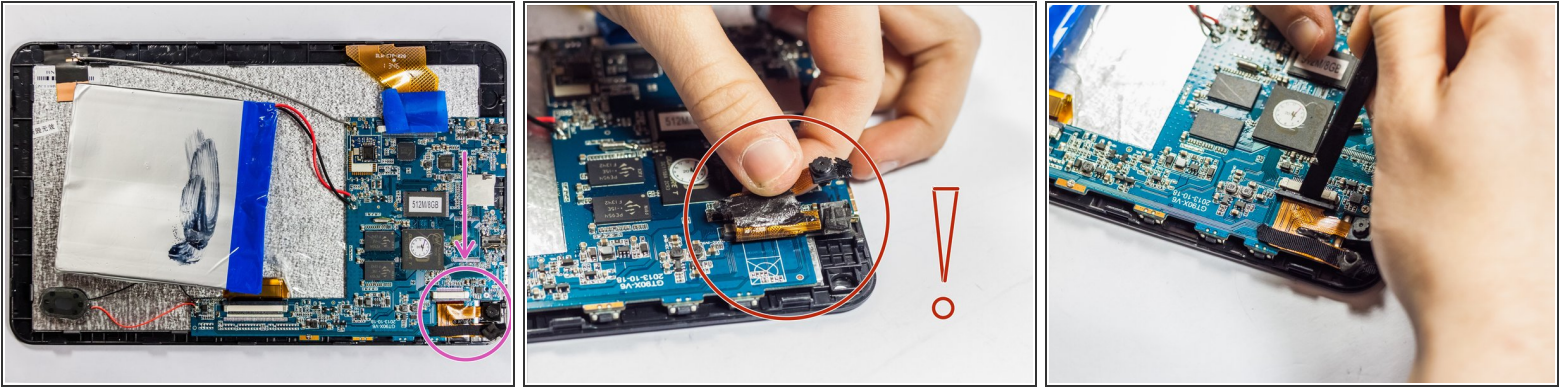
- [AKASO KingPad A90 Camera Unit](#) (1)

Step 1 — Camera (Rear and Front) Unit



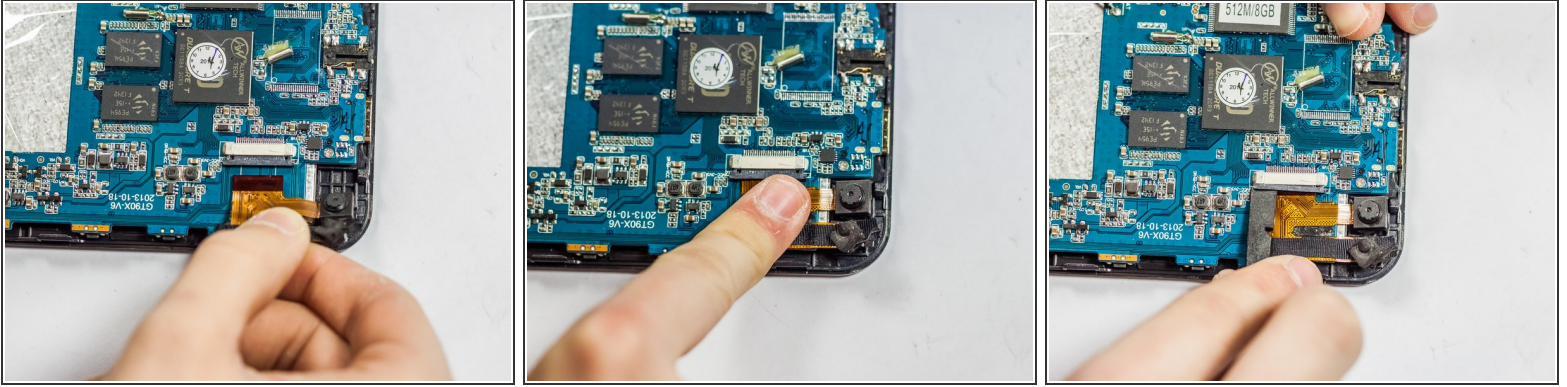
- Remove screws.
- Insert spudger tool on the middle of the left side, between the white and black plastic.
- Slide in a plastic opening tool and use it to further pull the back off.
- Work your way around the edge of the tablet with the plastic opening tool and insert more as needed.
- Pull off the back cover.

Step 2



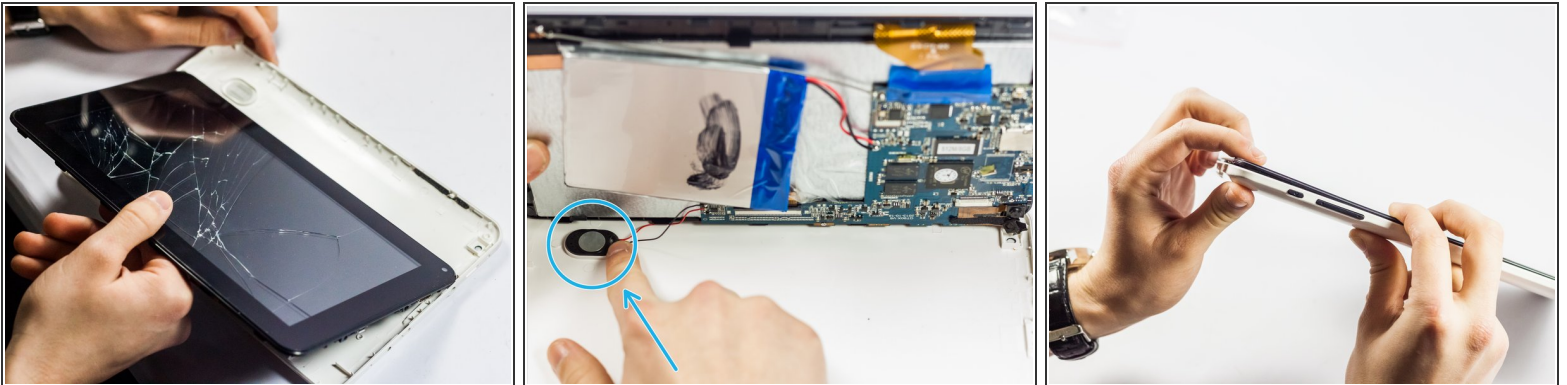
- Locate the camera unit and note where it is attached to the motherboard.
 - Grasp the camera unit with tweezers or fingers, and pull firmly to remove it from the adhesive holding it to the motherboard.
- ⚠ Be careful when lifting up the camera unit. Don't tear the ribbon cable! Ensure that you examine the second picture of this step.
- Using the spudger, carefully loosen the slot's plastic cover piece holding the ribbon cable in place.
 - Pull the ribbon cable out.
 - Remove the old adhesive with tweezers.

Step 3



- Apply a small square of new adhesive in the same spot as the old adhesive was previously.
- Gently slide the new camera unit's ribbon cable into the slot.
- ⓘ Give the ribbon a firm push to make sure it has made contact.
- Press the plastic cover piece back in place with the spudger.
- Firmly press the new camera onto the adhesive, making sure to line it up correctly.

Step 4



- Replace the back cover with the new camera unit in place.
- Gently press the speaker into place.
- ⚠ Don't let the volume rocker unit fall out of place.
- Replace the screws.

