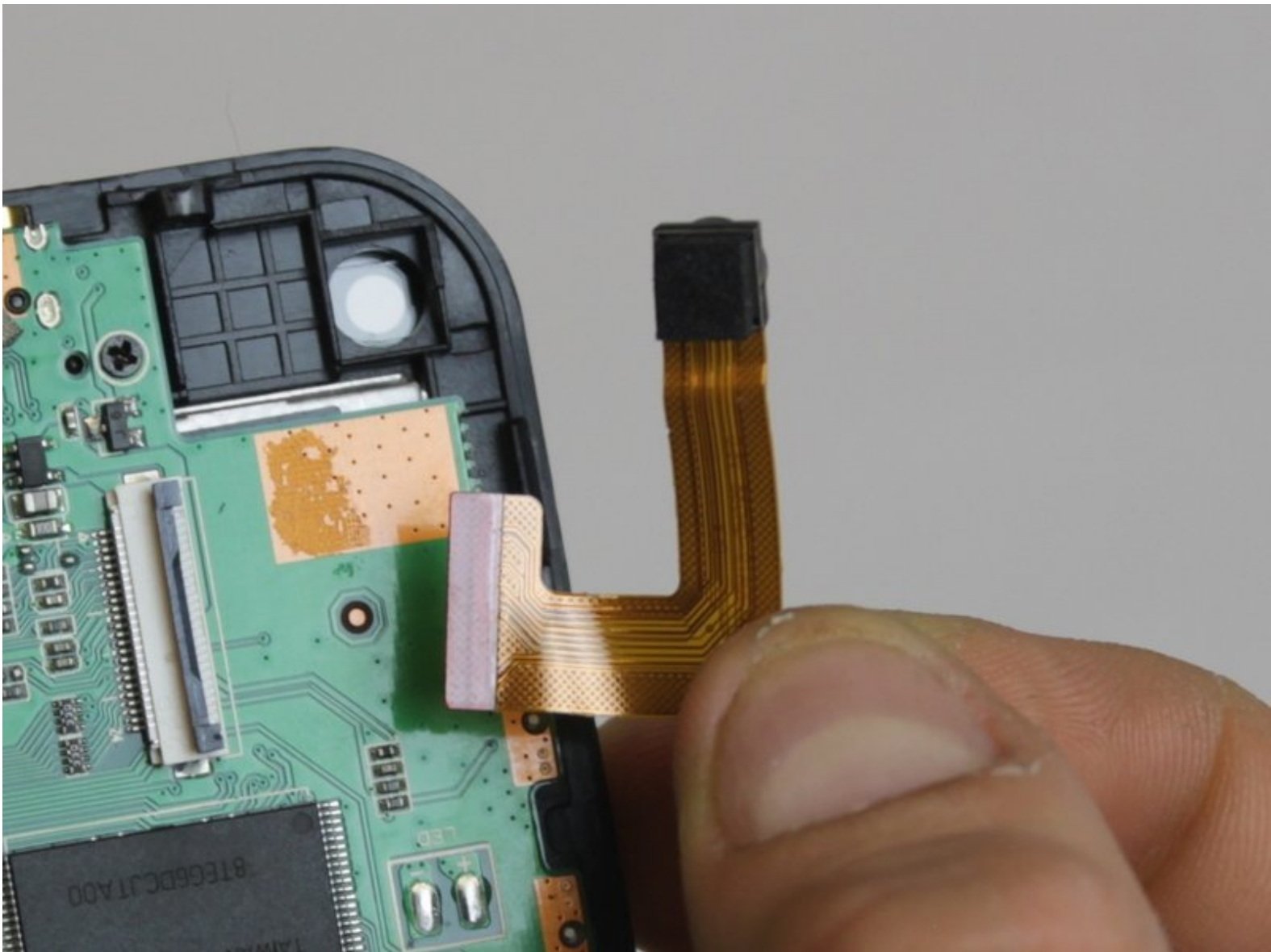




APEX AP-GS918 Camera Replacement

In this guide we will show you to remove the camera on your tablet in order to replace it.

Written By: Megan Lozicki



INTRODUCTION

If your camera has become scratched or broken, then this guide will help you take apart your tablet in order to access the camera. We will show you how to disassemble your tablet and then how to locate the camera in order to replace it.

TOOLS:

- [Phillips #00 Screwdriver](#) (1)
 - [iFixit Opening Tools](#) (1)
 - [Tweezers](#) (1)
 - [Spudger](#) (1)
-

Step 1 — Power/Volume Button



- To begin, locate the two 4.9mm Phillips #00 screws at the top corners of the case and remove them.

Step 2



- Squeeze the plastic opening tool in between the seam where the screen joins the plastic case.
- Begin separating the bottom of the case from the screen by carefully going around the whole edge of the case and slowly prying it apart.

⚠ Be careful when separating the lids because the wires holding the speaker to the motherboard are very short.

Step 3



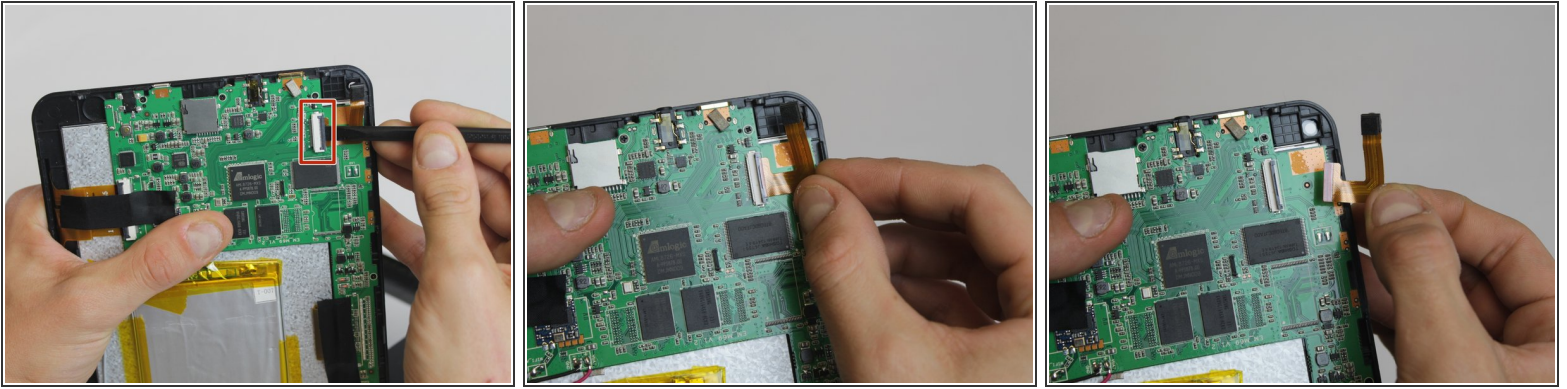
- Carefully place the bottom lid next to the screen case. The power/speaker buttons should be visible at the corner of the lid. Remove the buttons with the tweezers.

Step 4 — Camera



- Remove the black electrical tape covering the motherboard components along with the black cloth tape covering the camera itself.
- Be careful when removing the black cloth tape from the camera on the top left corner of the tablet. The tape will likely stick and pull the camera with it.

Step 5



- Locate the white and gray connector that's holding the camera in place.
- Use the black nylon spudger to eject the camera from its slot by gently lifting the gray clip vertically 90°.
- Once ejected, you may easily remove the camera by pulling it from its slot.

To reassemble your device, follow these instructions in reverse order.