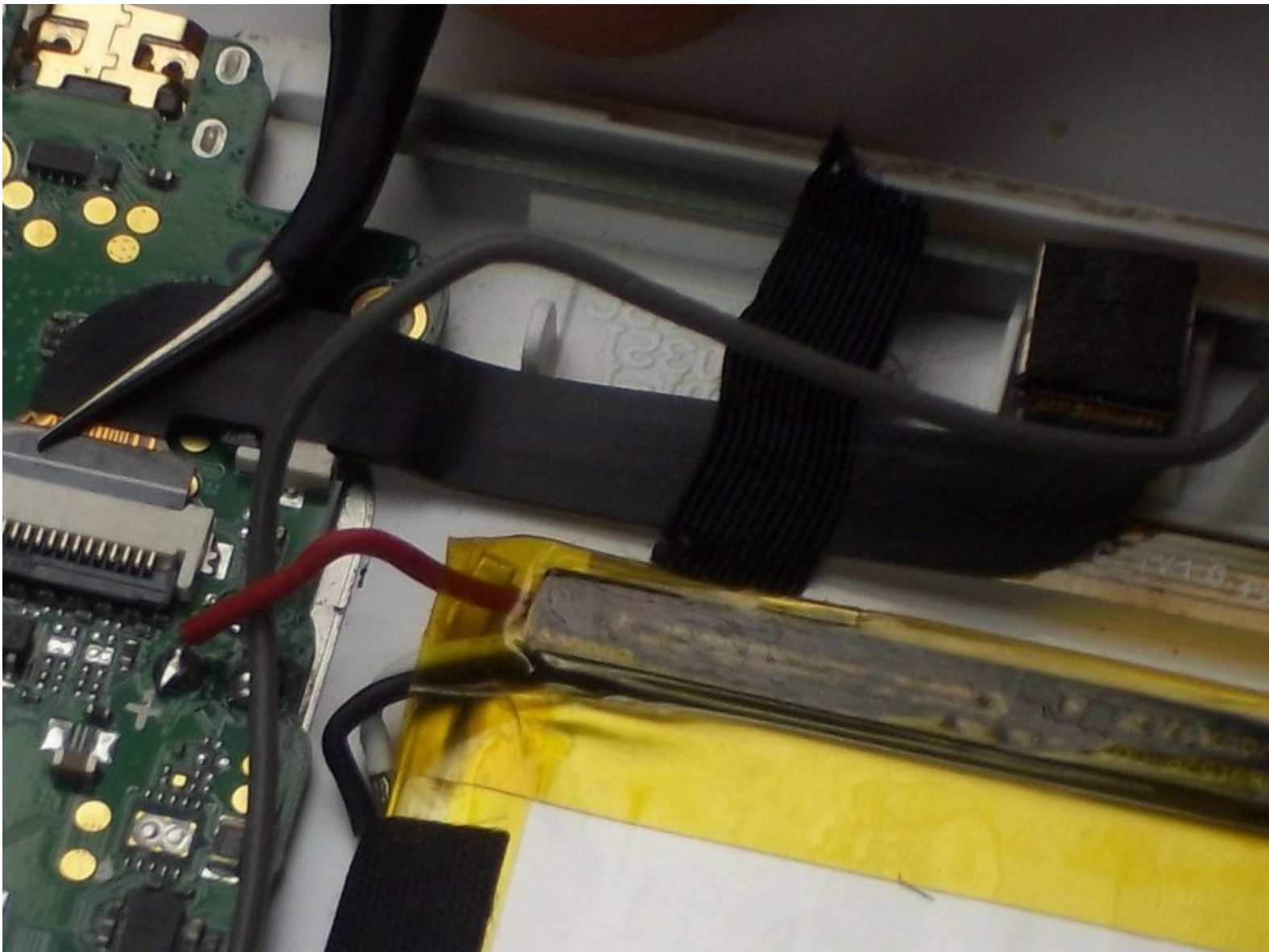




# APEX TM785CH Front Camera Replacement

The guide is written so the device's front camera can be replaced if it no longer takes pictures or video.

Written By: Brian Grascel



---

# INTRODUCTION

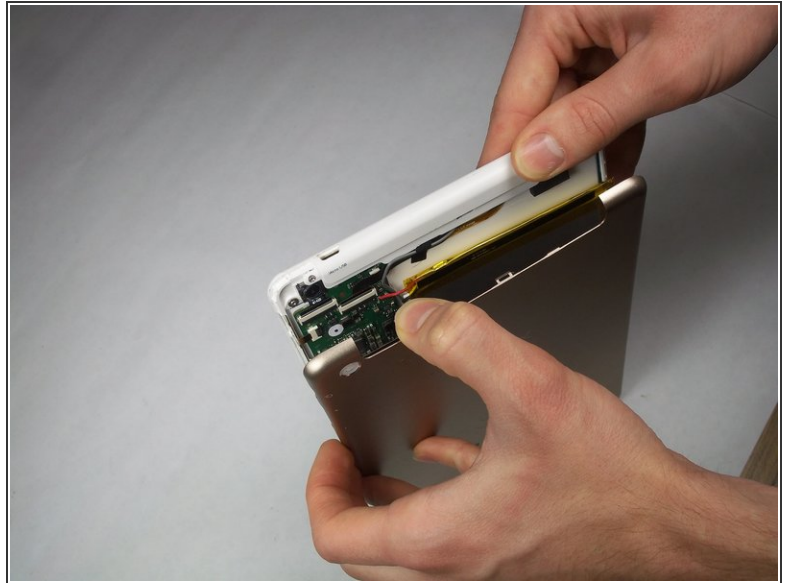
You will be able to break down the tablet to it's front camera and remove it.



## TOOLS:

- [iFixit Opening Tools](#) (1)
  - [Soldering Iron](#) (1)
  - [Phillips #00 Screwdriver](#) (1)
-

## Step 1 — Back Casing



- Start by bending the tablet back at the top white-colored portion to expose an opening between the back cover and the tablet body.
- Wedge a plastic opening tool into the opening and push it down to force the back cover off.
- Move along the top edge of the tablet and repeat the step above.
- Pull the back cover away from the tablet body to completely remove it.

## Step 2 — Front Camera



- To get to the front camera, you will first need to remove the top panel.
- Unscrew two 2.25 mm Phillips screws with a #00 screwdriver from the top plastic panel to remove it.

## Step 3



- Once unscrewed, use a spudger to pop the panel off by wedging it underneath the panel.



## Step 4



- First, use plastic coated tweezers to pull up the black release tab.
  - Pull on the black connector with tweezers as close as possible to the white connector base, making sure not to pull on the connector base.
- ⚠ It is important to be careful not to damage the black connector tape or the white base.
- Next, use the tweezers to peel off the tape holding down the connector to the front camera.
  - The front camera can now be removed from its socket.

To reassemble your device, follow these instructions in reverse order.