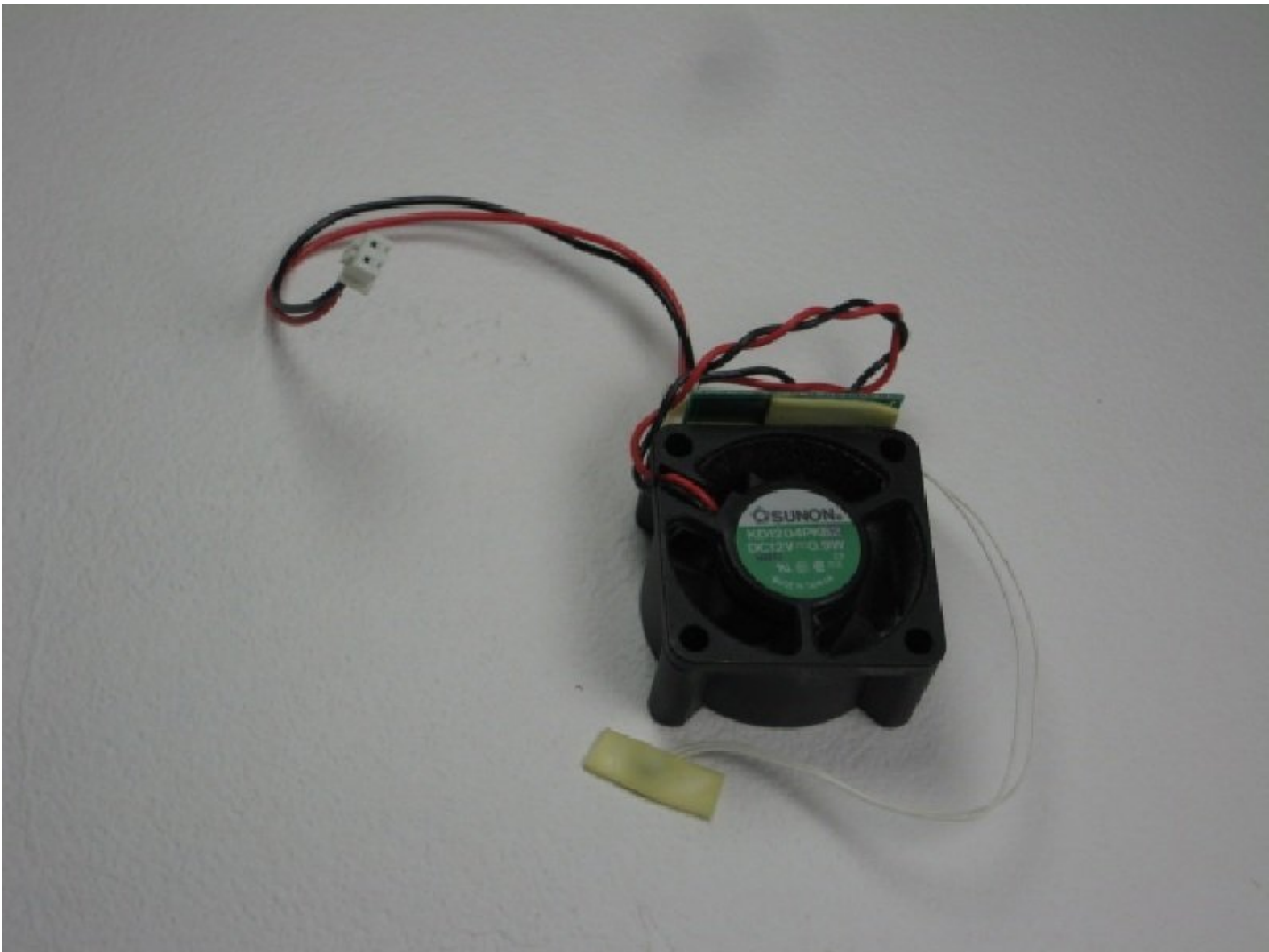




APS Tech 101629 Exhaust Fan Replacement

This guide will give directions on how to remove the case of the CD-Drive and replace a worn out fan.

Written By: Patrick Meyer



INTRODUCTION

This repair guide will walk you through the steps to removing and replacing the fan of your APS Tech 101629 CD-Drive. Fans are easily replaced and the process for removing this fan is fairly simple.

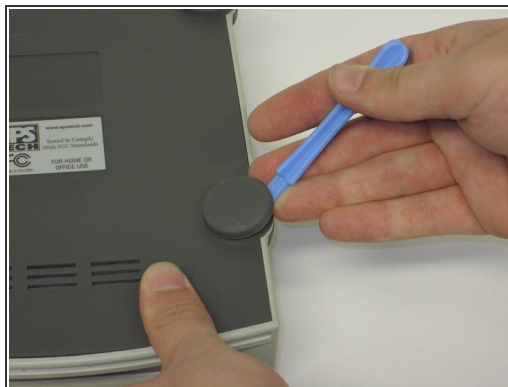
First the casing, channel switch, and power switch will need to be removed.



TOOLS:

- [Phillips #1 Screwdriver](#) (1)
 - [Spudger](#) (1)
 - [Tweezers](#) (1)
 - [iFixit Opening Tools](#) (1)
-

Step 1 — External Casing



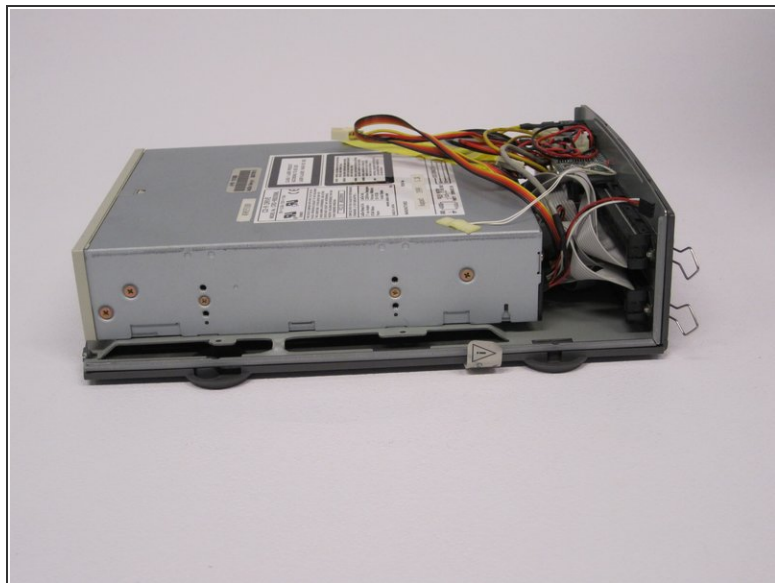
- Pry 4 plastic feet off the bottom of the enclosure using the iPod opening tool.

Step 2



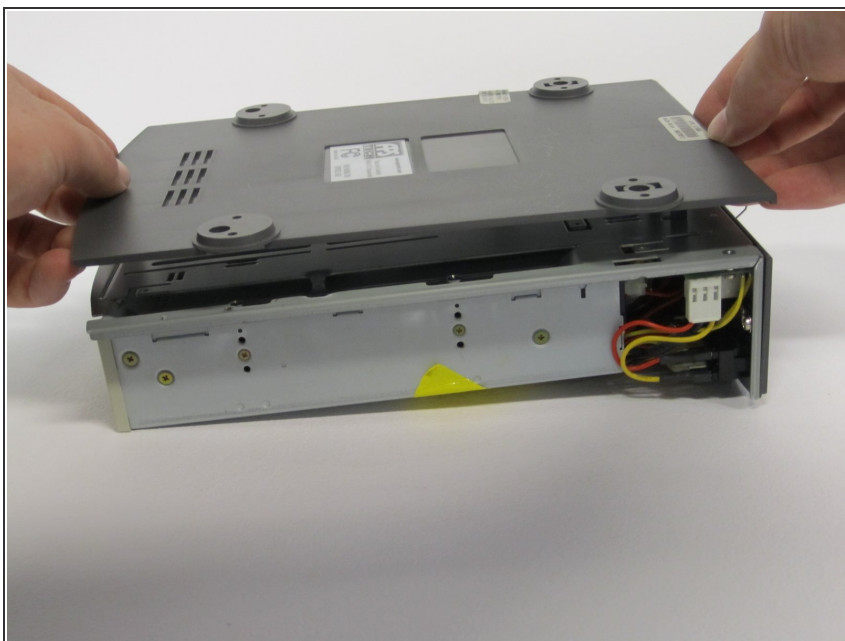
- Unscrew the four screws previously covered by the feet.

Step 3



- Flip the device right side up, then gently slide the casing upwards and off the hard drive.

Step 4



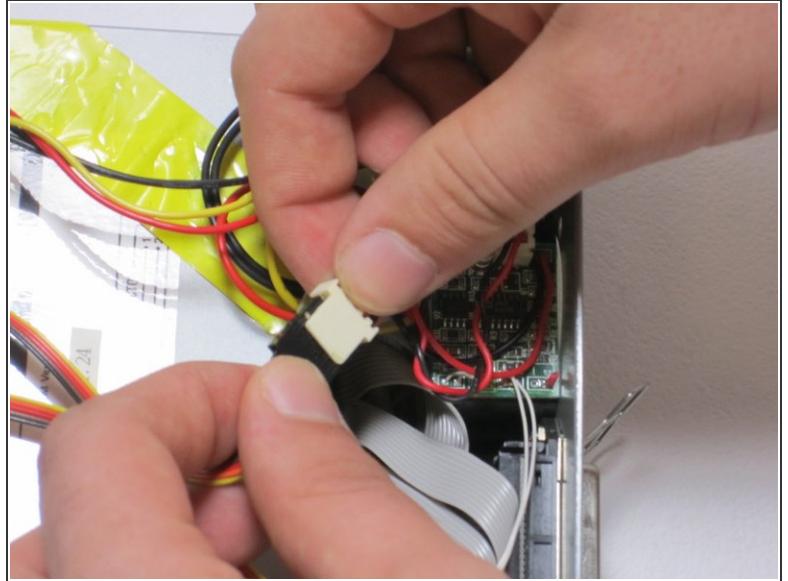
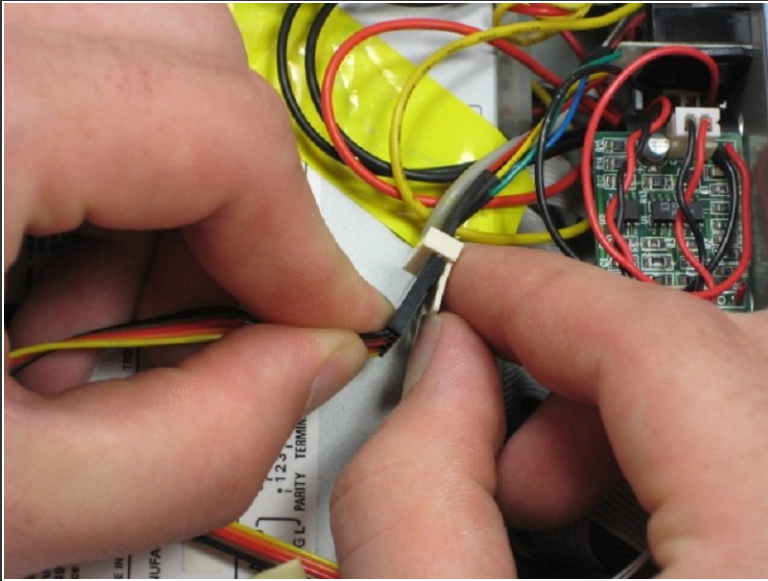
- Flip device upside down again.
- Gently pry the bottom gray casing away from the device.

Step 5




- Rotate so back of device is facing you, then gently pry the back casing away.
- When back casing is removed, the fan will become loose.

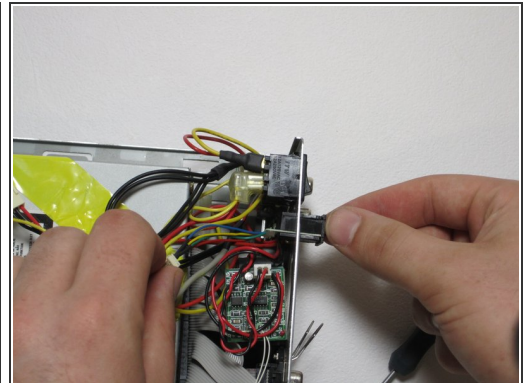
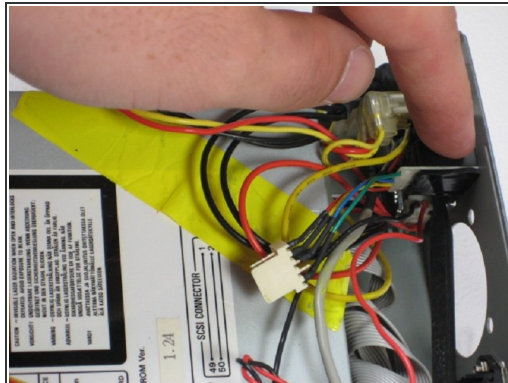
Step 6 — Channel Switch




- Find the conjoined ID cable wires that are colored black, orange, and yellow, and disconnect it from the white portion.

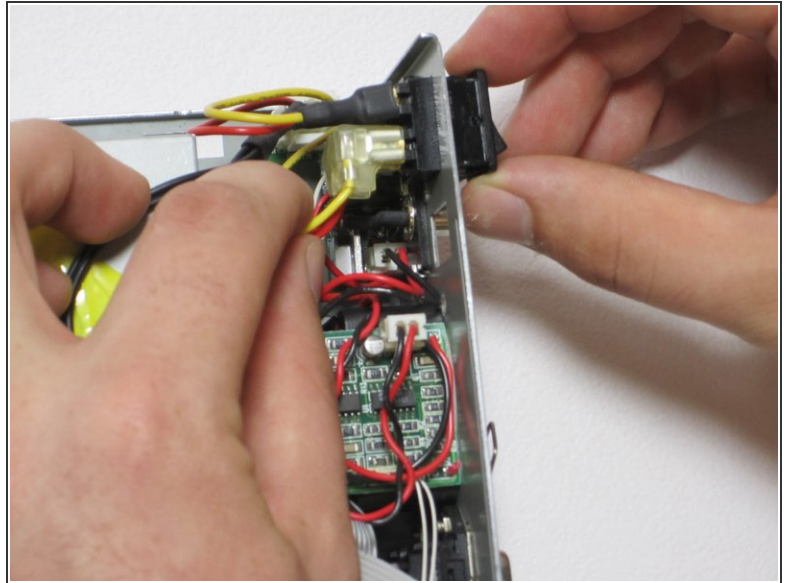
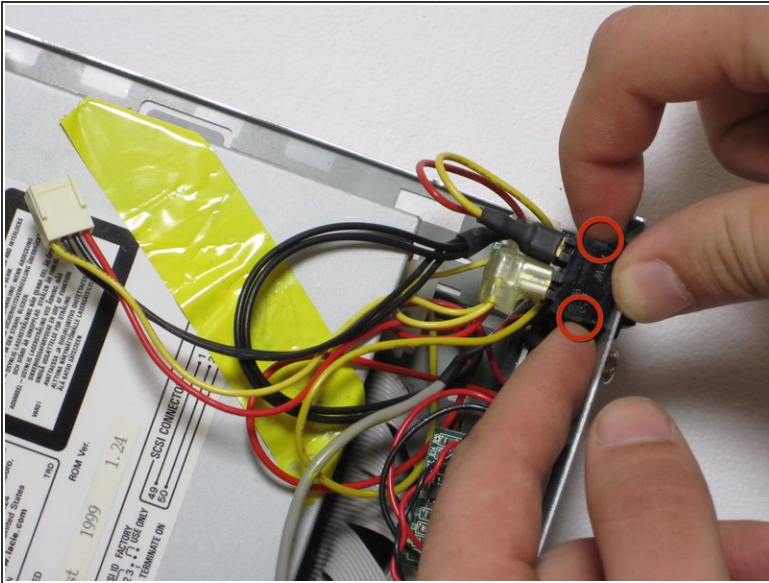
 Make sure to lift the white portion of the connection first.

Step 7



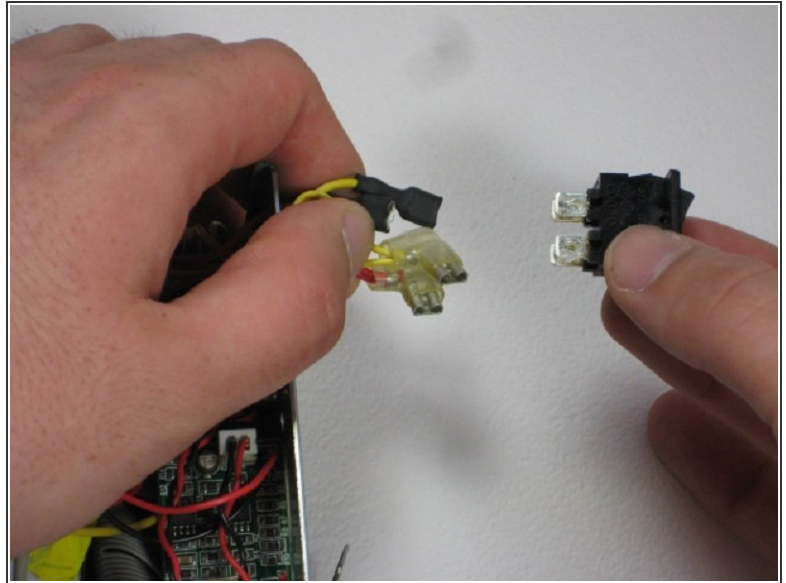
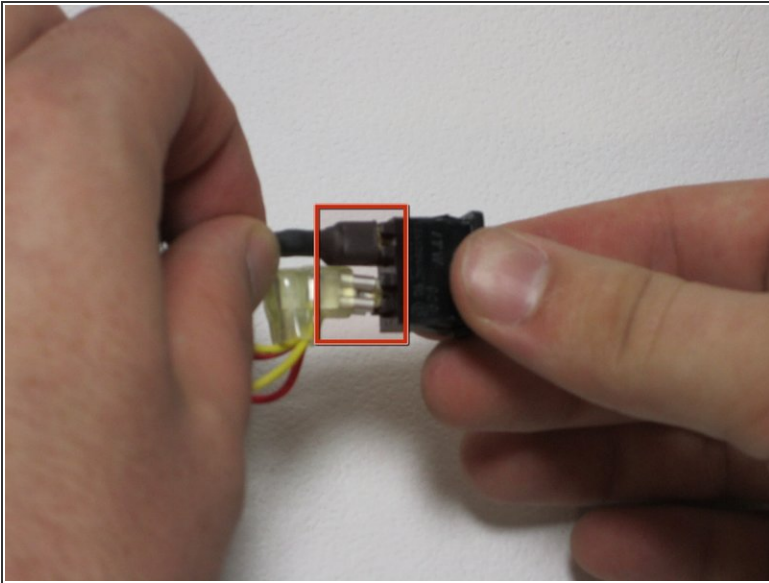
-  At this point, the fan is loose and can be easily moved but not disconnected.
- Using the spudger, depress the pressure holders at all four corners of the fan.
- Take out the fan and its cords, by pulling it outward from its cavity within the device.


Step 8 — Power Switch



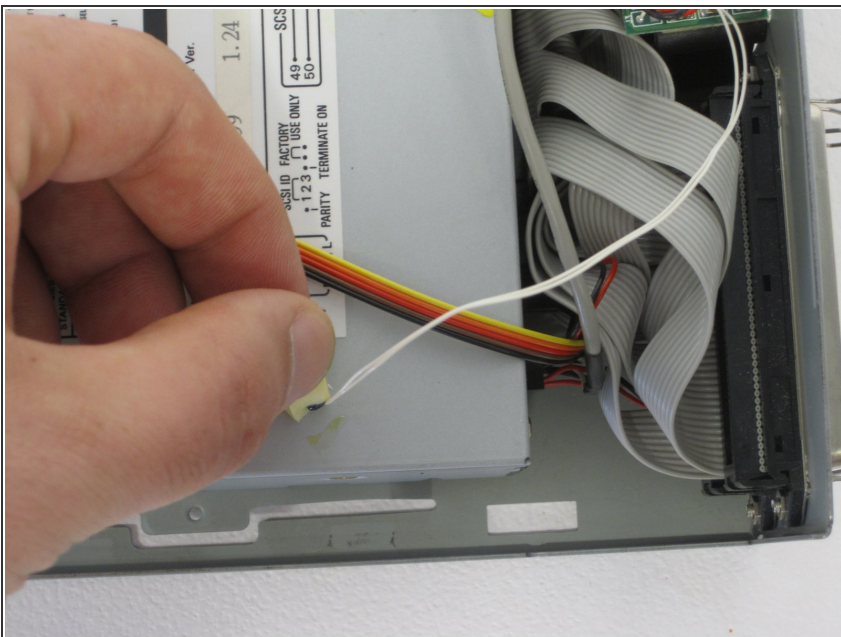
- Depress 2 pressure holds on each side of the power switch.
- Press out the back of the device.

Step 9



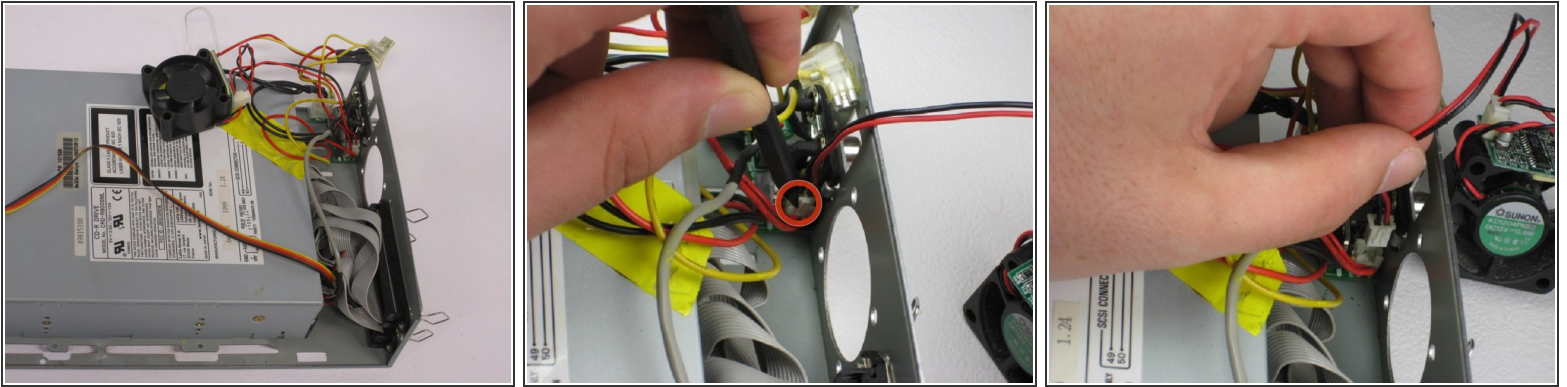
- Remove all four 4 connections from the power switch.
 - Remember that the straight connections are on the far side, while the L-shaped connections are on the near side, and that both yellow connections are on top. This is helpful for reassembly.
-  These are very hard to get off, use patience and wiggling.

Step 10 — Exhaust Fan



- Remove temperature guage.

Step 11



- Move the exhaust fan out of the way so you can access its control cord.
- Use the spudger to depress the hold on the fan cord.
- Gently pull fan cord from connection and remove fan completely.

To reassemble your device, follow these instructions in reverse order.