



# APS Tech 101629 Power Switch Replacement

This guide will show how to replace a worn out power switch.

Written By: Alexis Weckel



## INTRODUCTION

This repair guide will guide you through the steps to removing and replacing the power switch of your APS Tech 101629 CD-Drive.

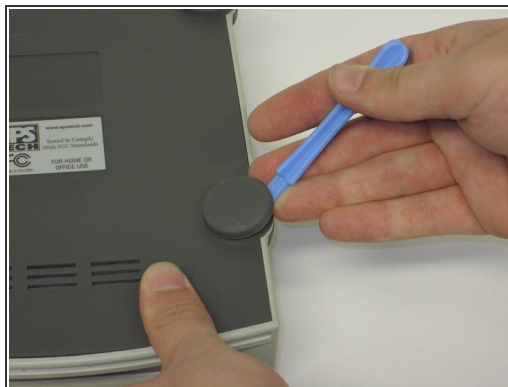
First the external casing, and channel switch will need to be removed.



### TOOLS:

- [Phillips #1 Screwdriver](#) (1)
  - [Spudger](#) (1)
  - [Tweezers](#) (1)
  - [iFixit Opening Tools](#) (1)
-

## Step 1 — External Casing



- Pry 4 plastic feet off the bottom of the enclosure using the iPod opening tool.

## Step 2



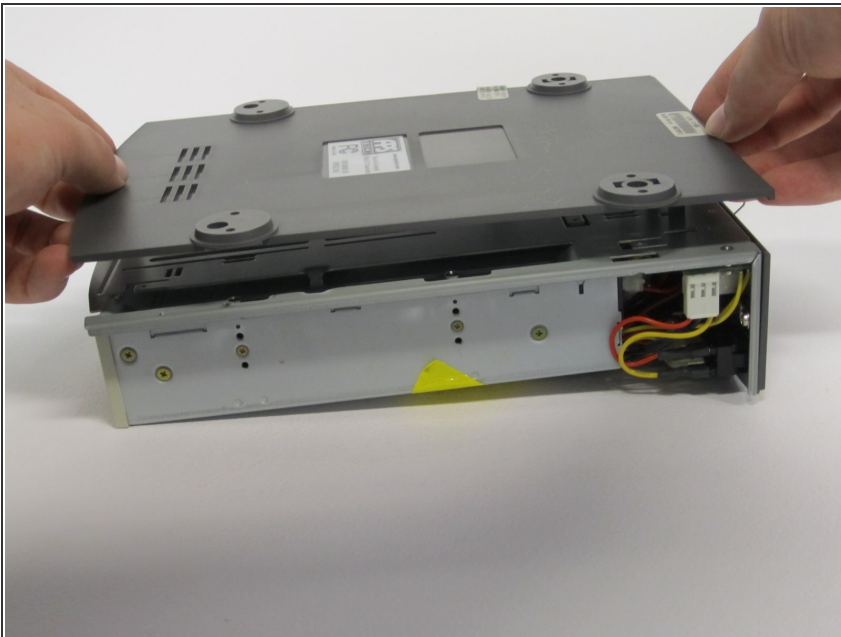
- Unscrew the four screws previously covered by the feet.

### Step 3



- Flip the device right side up, then gently slide the casing upwards and off the hard drive.

### Step 4



- Flip device upside down again.
- Gently pry the bottom gray casing away from the device.

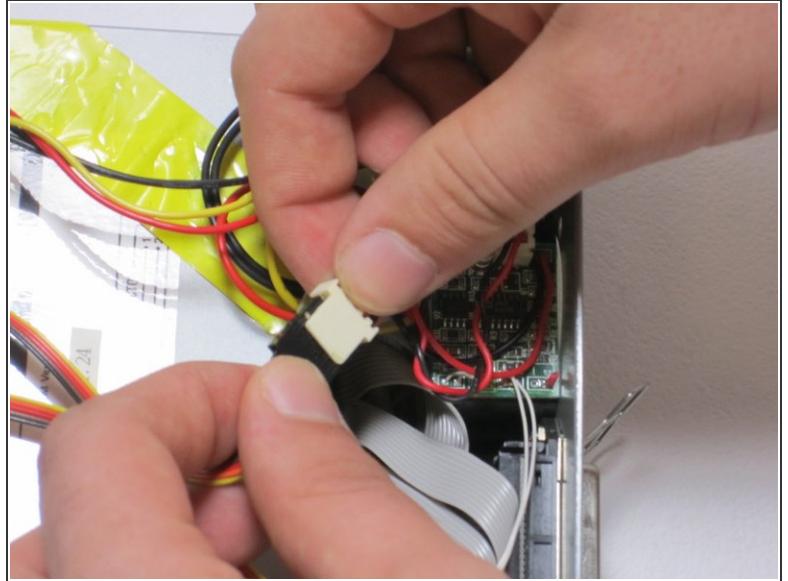
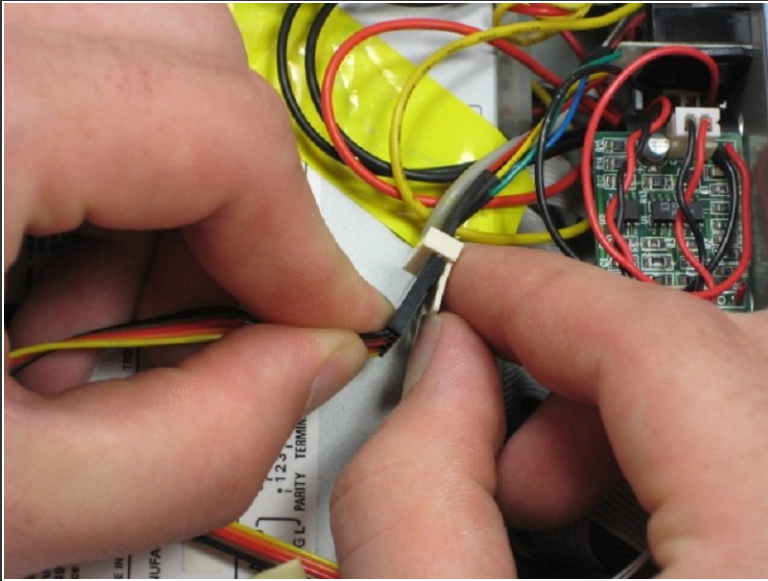
## Step 5



- Rotate so back of device is facing you, then gently pry the back casing away.
- When back casing is removed, the fan will become loose.



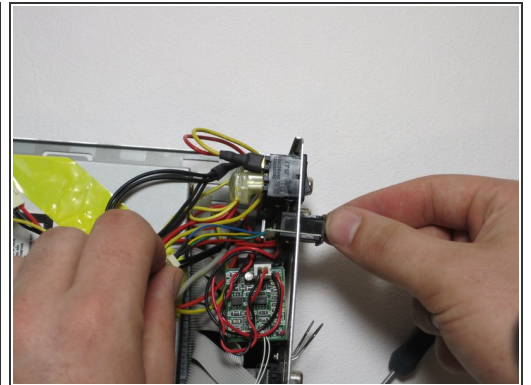
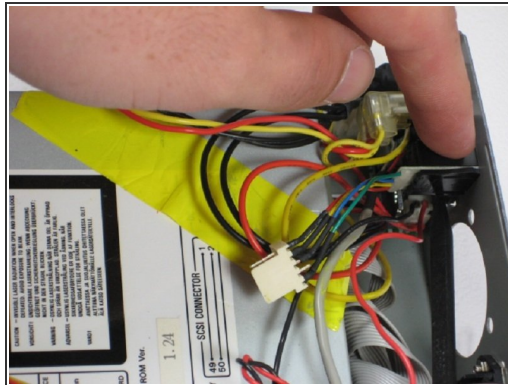
## Step 6 — Channel Switch



- Find the conjoined ID cable wires that are colored black, orange, and yellow, and disconnect it from the white portion.

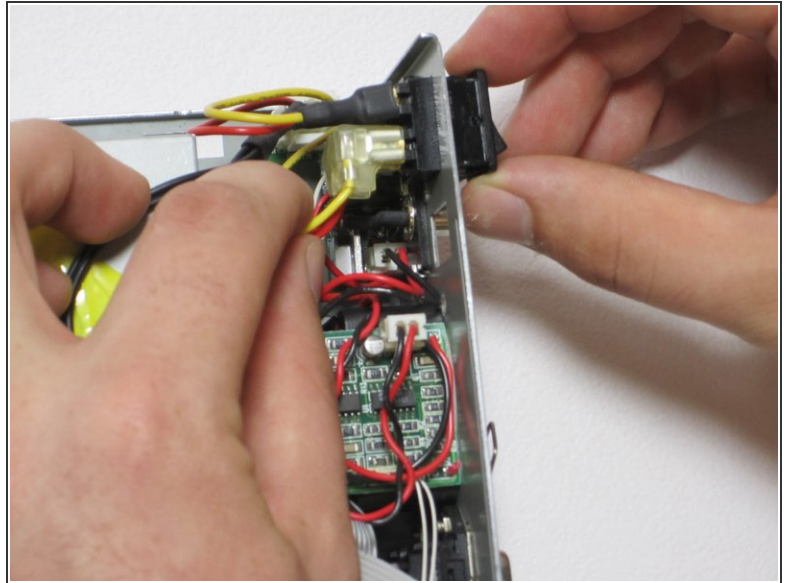
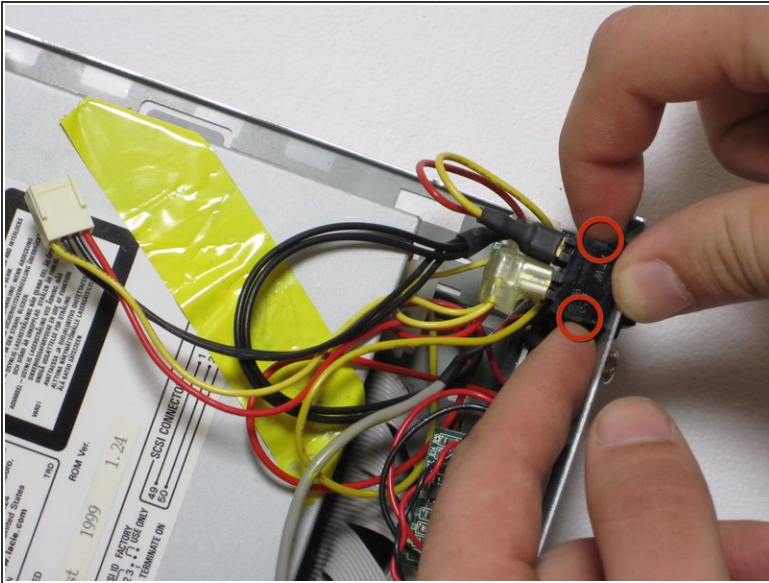
⚠ Make sure to lift the white portion of the connection first.

## Step 7



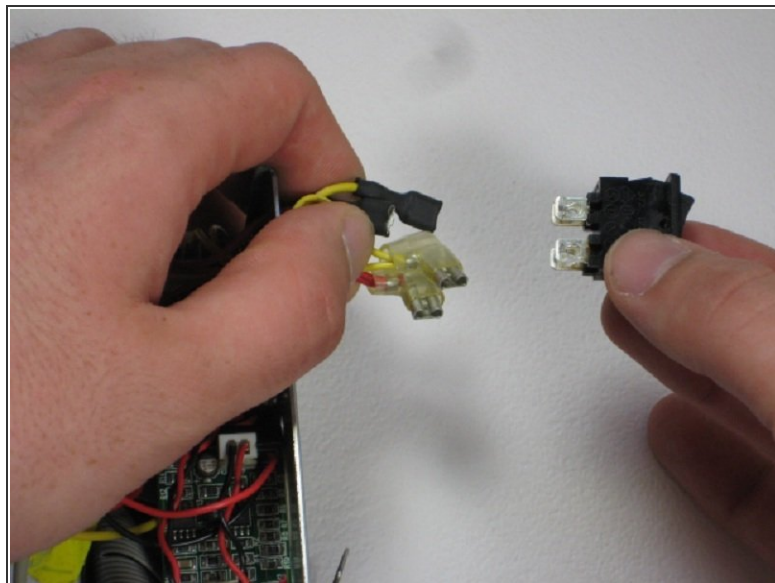
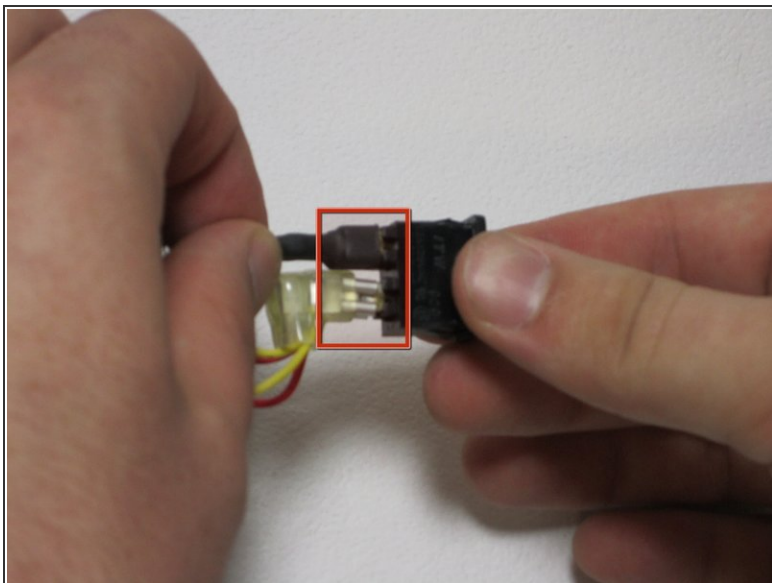
- ⓘ At this point, the fan is loose and can be easily moved but not disconnected.
- Using the spudger, depress the pressure holders at all four corners of the fan.
- Take out the fan and its cords, by pulling it outward from its cavity within the device.

## Step 8 — Power Switch



- Depress 2 pressure holds on each side of the power switch.
- Press out the back of the device.

## Step 9



- Remove all four 4 connections from the power switch.
  - Remember that the straight connections are on the far side, while the L-shaped connections are on the near side, and that both yellow connections are on top. This is helpful for reassembly.
- ⓘ These are very hard to get off, use patience and wiggling.

To reassemble your device, follow these instructions in reverse order.