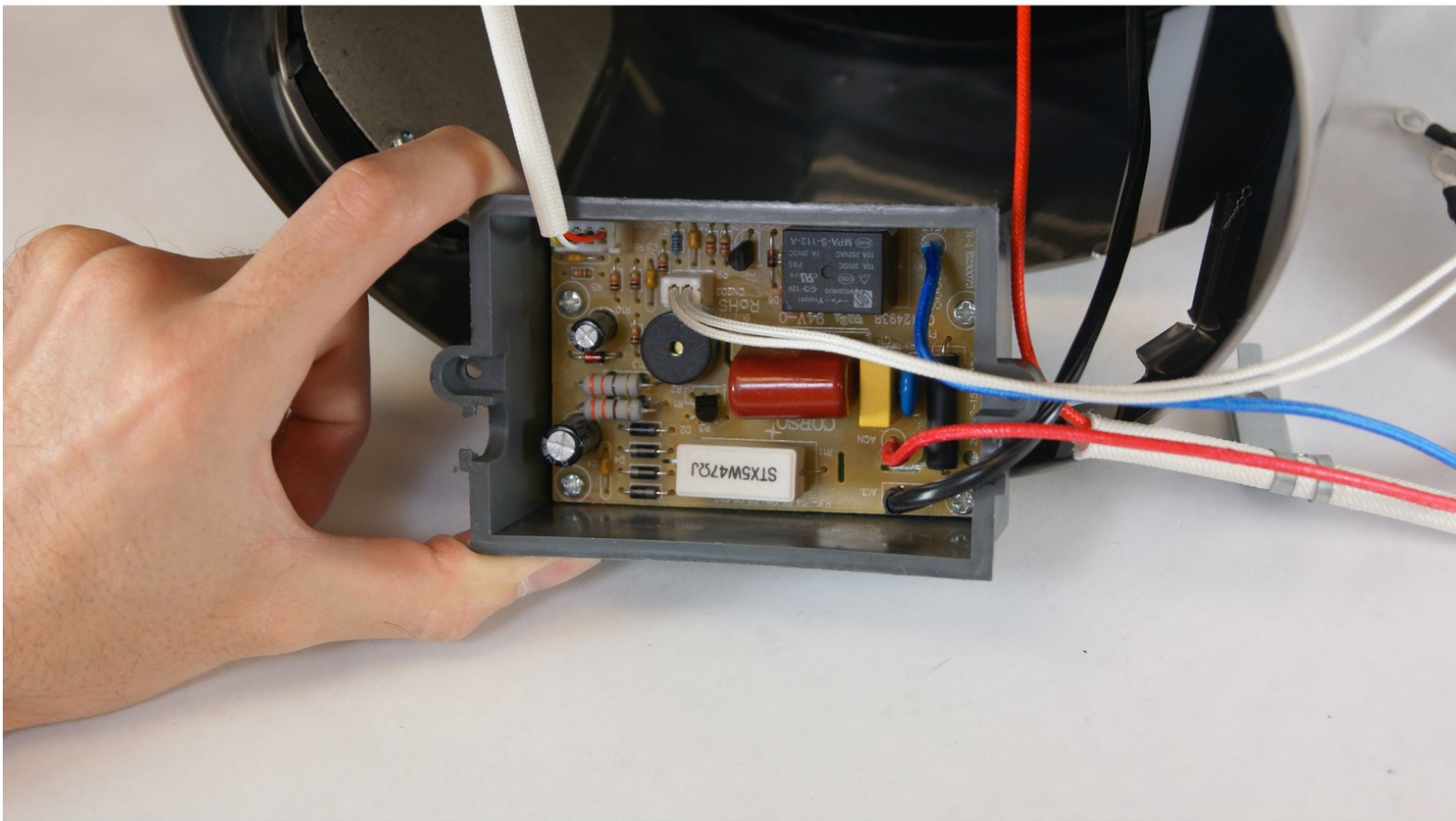




# ARC-914SBD Control Module Replacement

Written By: Brandon Nieves



---

## INTRODUCTION

After opening the device and unplugging the heating element, thermostat, interface, and power the control module can be removed.

---

### TOOLS:

- [Phillips #2 Screwdriver](#) (1)
  - [iFixit Opening Tools](#) (1)
-

## Step 1 — Lid



- Begin by removing the condensation catcher to expose the screw. Pinch the condensation catcher from both sides and pull.

## Step 2



- Remove the screw that was behind the condensation catcher using a Phillips head screwdriver, size PH2.

### Step 3



- Remove the piece that was held by the screw by pulling out from the top, then pulling up. This will expose the hinges for the lid.

### Step 4



- To remove the hinges, rotate the bottom of the rod upwards, then push inwards to pull them out. Repeat the process for both sides. This will allow the lid to be removed.

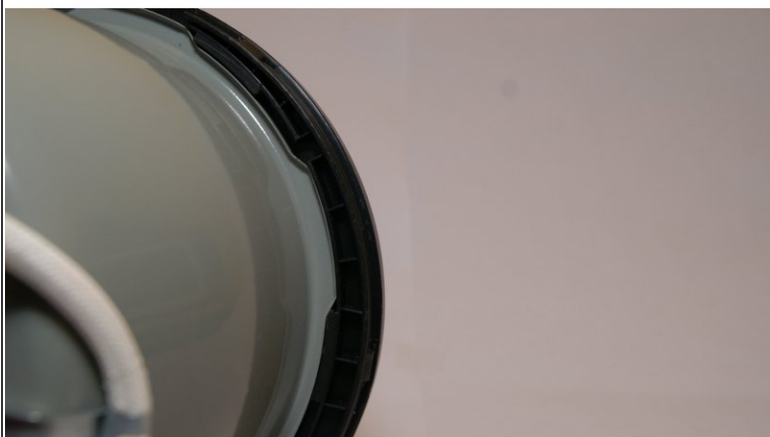
## Step 5 — Heating Element/ Thermostat



- Locate the piece on the black plastic trim that is opposite from where the hinges were. Carefully, pry this piece from the bottom to get the tab from behind the stainless steel to in front of the steel as shown.

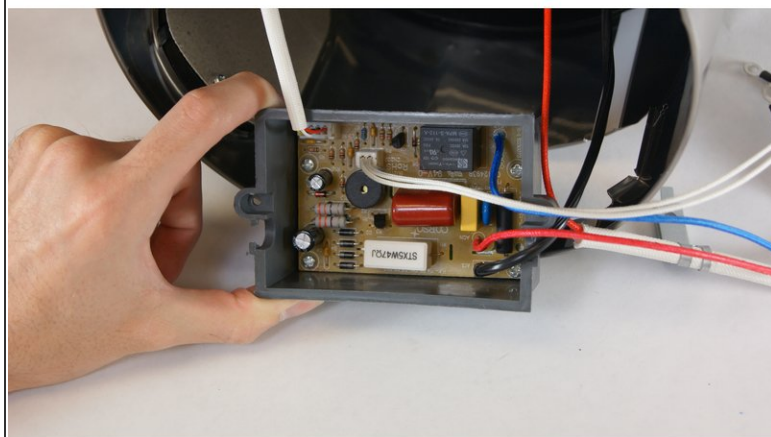
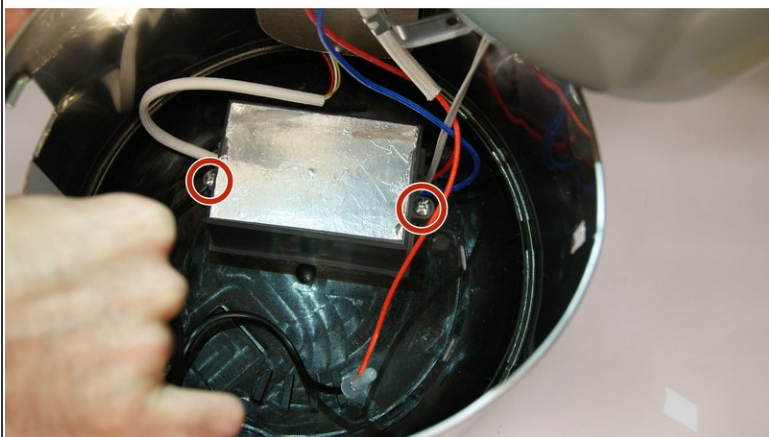


## Step 6



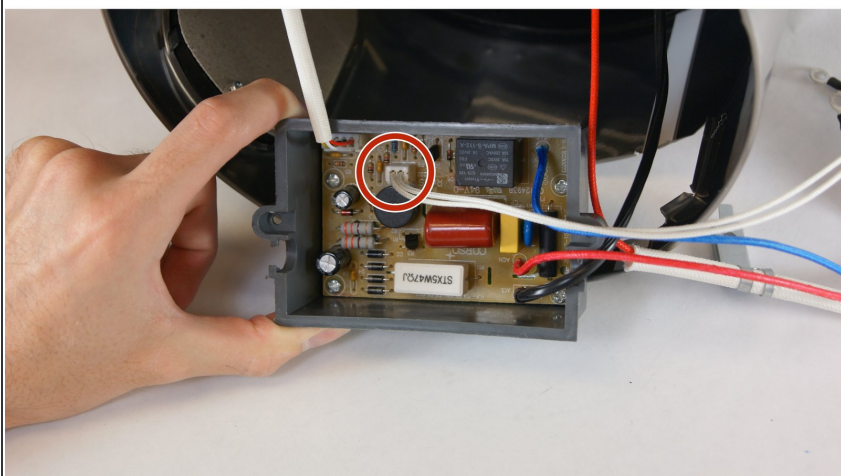
- Next, you must remove the upper black trim which is connected to the inside liner with tabs. To do this you must hold the interior walls still, while rotating the trim so that the tabs line up with the slots. (tabs cannot be seen at this point, pics are to give you an idea of what you cannot see inside the device)

## Step 7



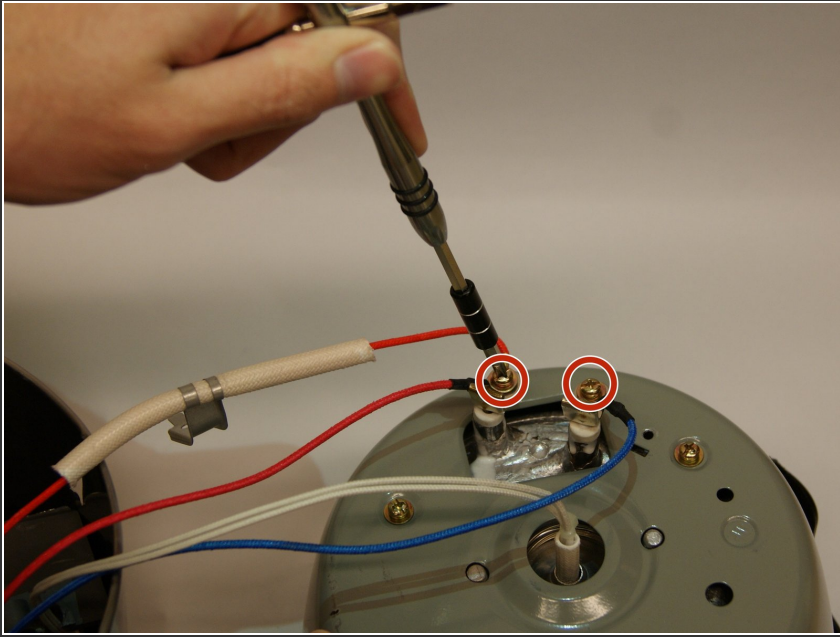
- Using a Phillips head screwdriver, size PH2, remove the screws from the control module to expose wired connections.

## Step 8



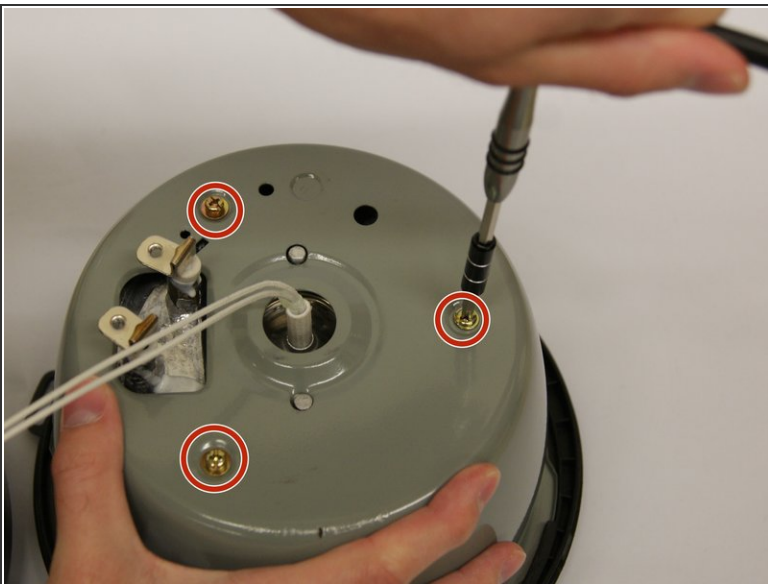
- Unplug thermostat from control module

## Step 9



- Remove red and blue wires from heating element to fully detach from control module. This is done by removing the screws on the heating element terminals using a Phillips head screwdriver, size PH2.

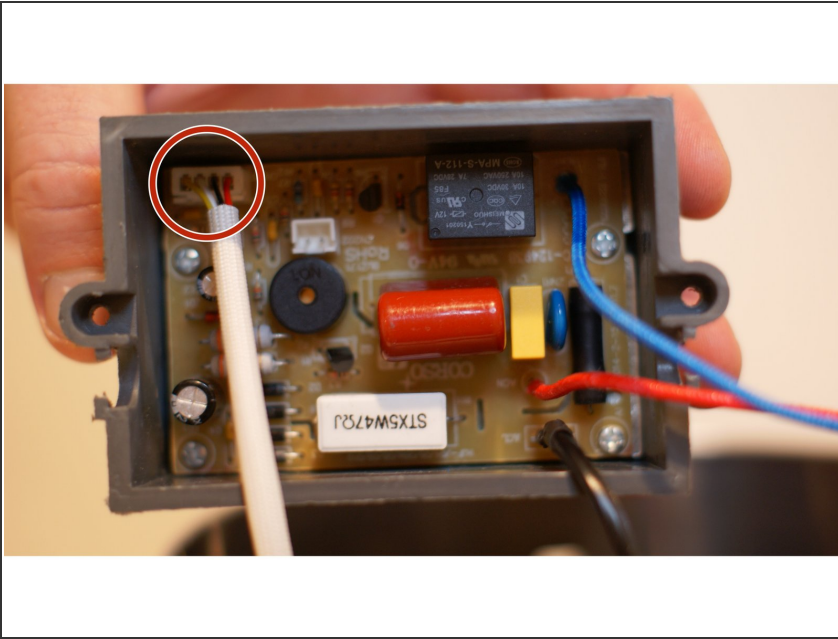
## Step 10



- Again, using a Phillips head screwdriver, size PH2, remove the three screws holding the heating element assembly to the bowl. This will remove the heating element and the thermostat.

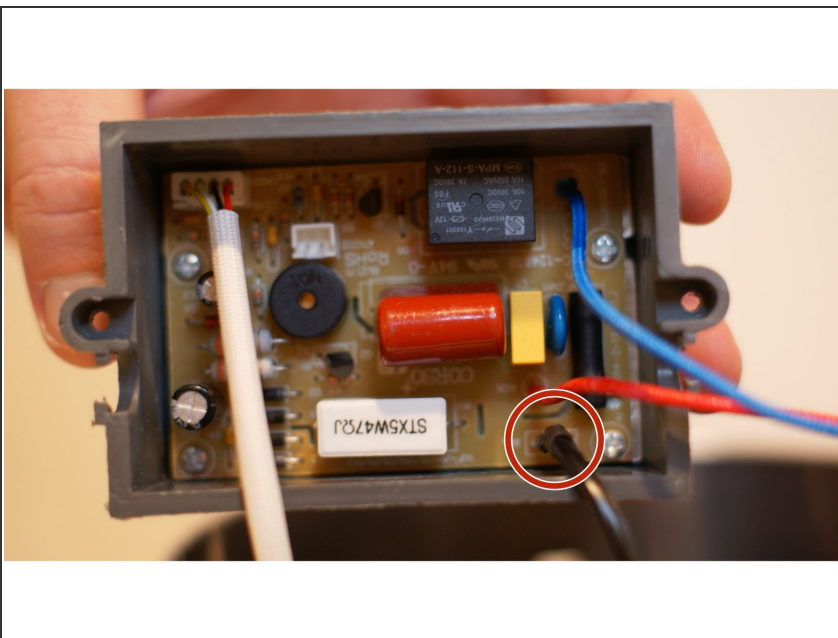


## Step 11 — Control Module



- Unplug the interface from the control module

## Step 12



- Unplug the power from the control module

To reassemble your device, follow these instructions in reverse order.