



ARC-914SBD Power Cord Replacement

Frayed or damaged power cord will be replaced

Written By: Brandon Nieves



INTRODUCTION

This replacement guide should only be needed if you are entirely sure that the power cord is severely damaged and needs replacement. The power cord component lies at the very bottom of the device. Because of this, most all of the other components would need to be removed before any replacement of the power cord can be done. One of the most important tools needed after surfacing the power cord is a pair of pliers.



TOOLS:

- [Phillips #2 Screwdriver](#) (1)
 - [Slip Joint Pliers](#) (1)
 - [iFixit Opening Tools](#) (1)
-

Step 1 — Lid



- Begin by removing the condensation catcher to expose the screw. Pinch the condensation catcher from both sides and pull.

Step 2



- Remove the screw that was behind the condensation catcher using a Phillips head screwdriver, size PH2.

Step 3



- Remove the piece that was held by the screw by pulling out from the top, then pulling up. This will expose the hinges for the lid.

Step 4



- To remove the hinges, rotate the bottom of the rod upwards, then push inwards to pull them out. Repeat the process for both sides. This will allow the lid to be removed.

Step 5 — Heating Element/ Thermostat



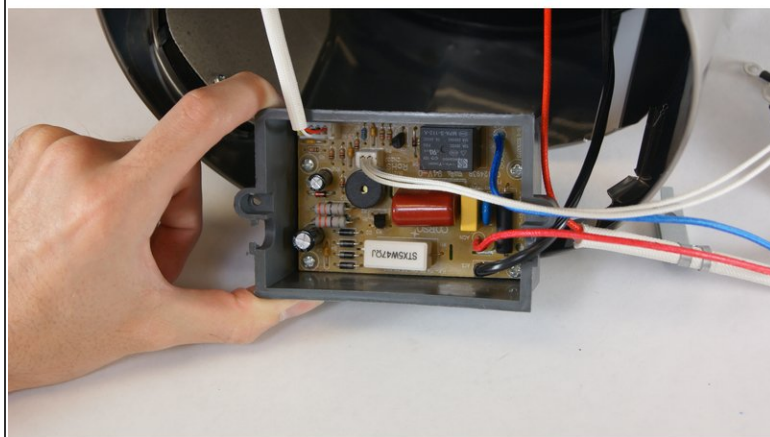
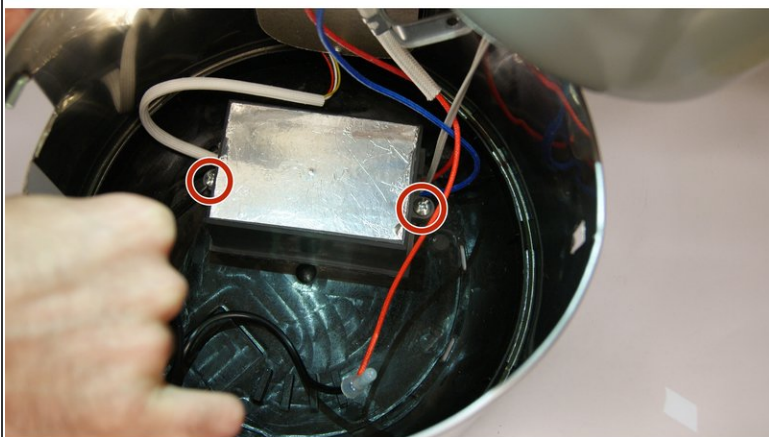
- Locate the piece on the black plastic trim that is opposite from where the hinges were. Carefully, pry this piece from the bottom to get the tab from behind the stainless steel to in front of the steel as shown.

Step 6



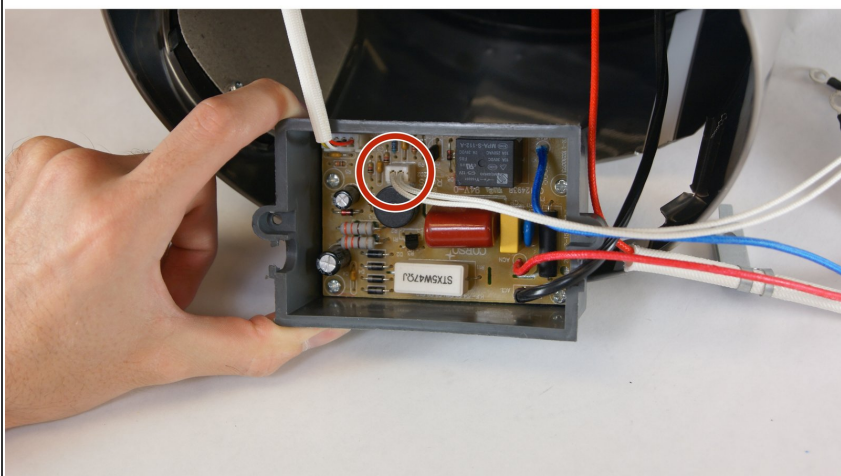
- Next, you must remove the upper black trim which is connected to the inside liner with tabs. To do this you must hold the interior walls still, while rotating the trim so that the tabs line up with the slots. (tabs cannot be seen at this point, pics are to give you an idea of what you cannot see inside the device)

Step 7



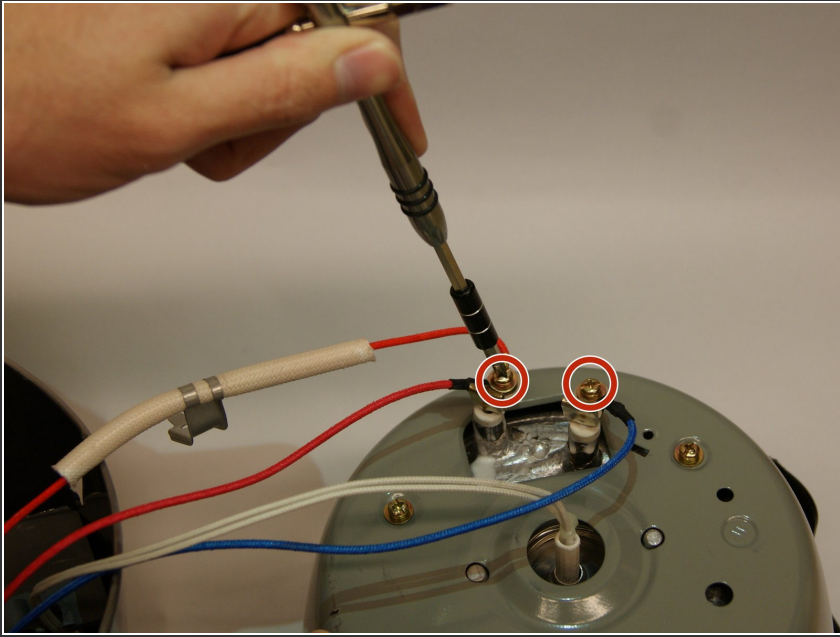
- Using a Phillips head screwdriver, size PH2, remove the screws from the control module to expose wired connections.

Step 8



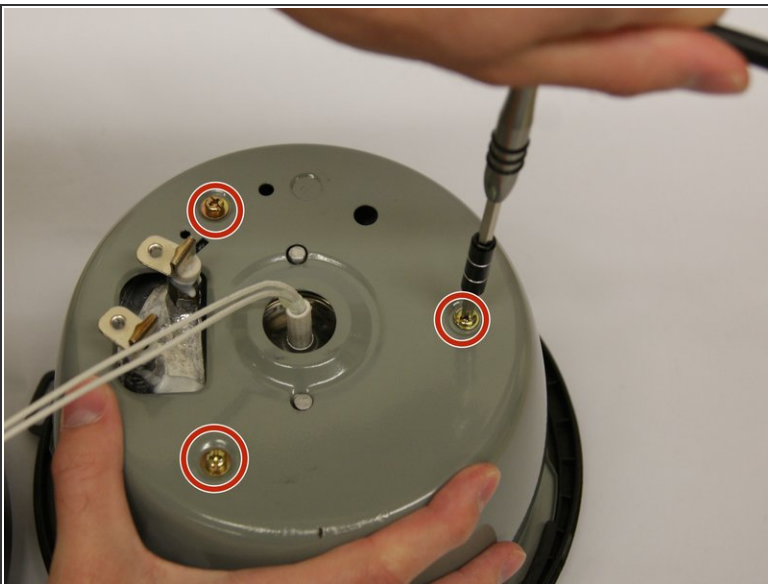
- Unplug thermostat from control module

Step 9



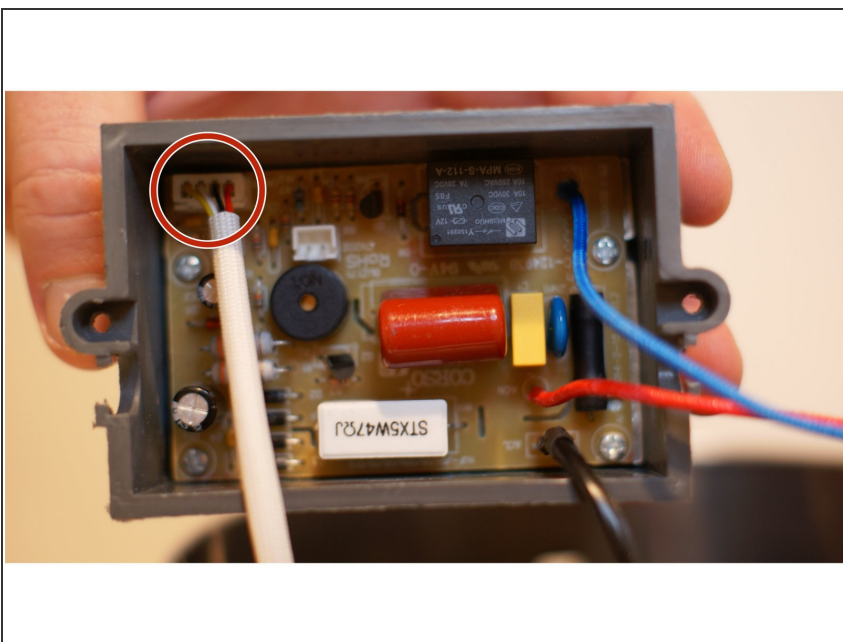
- Remove red and blue wires from heating element to fully detach from control module. This is done by removing the screws on the heating element terminals using a Phillips head screwdriver, size PH2.

Step 10



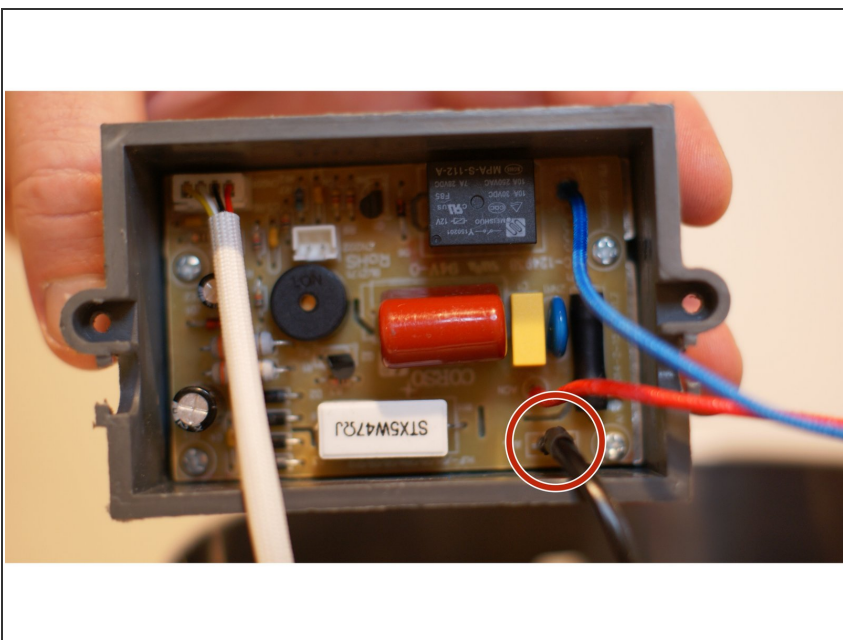
- Again, using a Phillips head screwdriver, size PH2, remove the three screws holding the heating element assembly to the bowl. This will remove the heating element and the thermostat.

Step 11 — Control Module



- Unplug the interface from the control module

Step 12



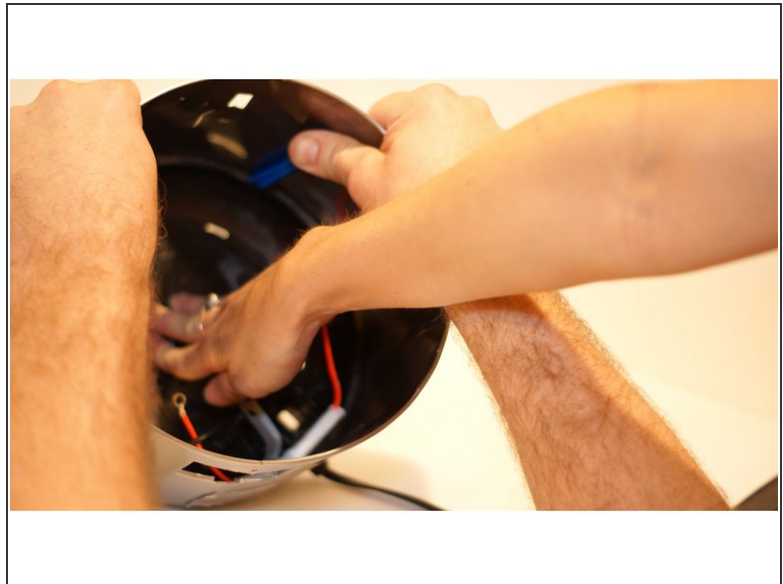
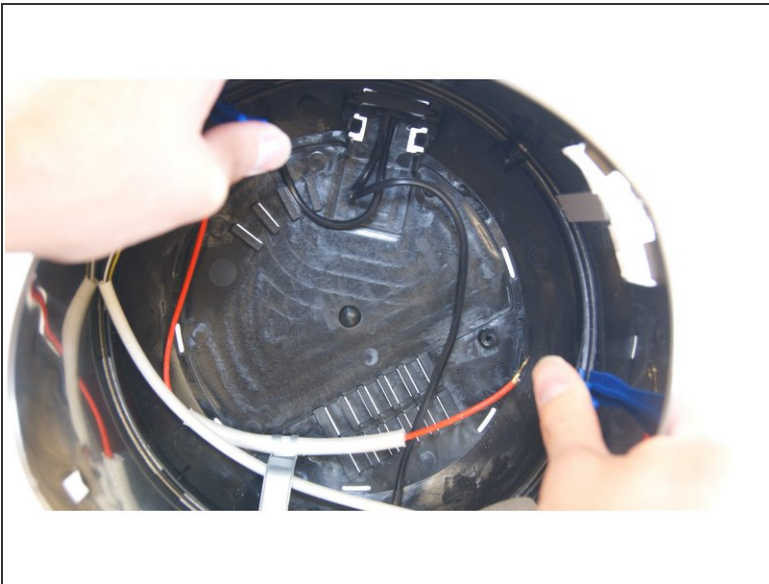
- Unplug the power from the control module

Step 13 — Power Cord



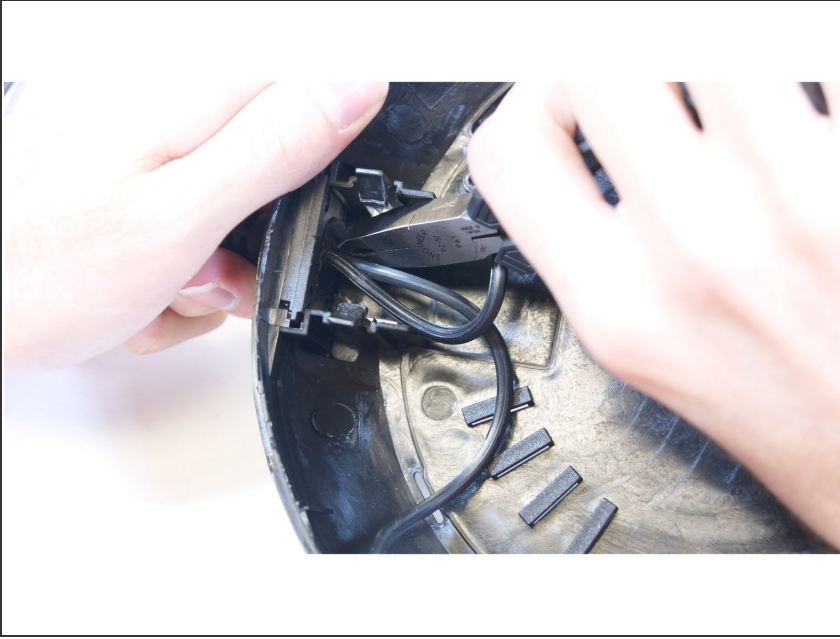
- Locate the hidden screw behind the label and then remove it using a Phillips head screwdriver, size PH2.

Step 14



- Pry the black base from the stainless steel housing while pushing down on black base from inside the device. This step is much easier with two people. One person can pry while the other pushes.

Step 15



- Using pliers, rotate the power cord clockwise to align it with the hole and simply pull it through.

To reassemble your device, follow these instructions in reverse order.