



ASUS Chromebook C200MA DS01 Speaker Replacement

Asus Chromebook C200MA speaker replacement.

Written By: Christopher Lim



INTRODUCTION


This guide will take you through a step-by-step process for the removal of your Chromebook's speakers.

TOOLS:

- [iFixit Opening Tools](#) (1)
 - [Phillips #0 Screwdriver](#) (1)
 - [Small Plastic Spudger](#) (1)
-

Step 1 — Back Panel



 Before proceeding, power down your Chromebook. Close the display and lay it on a soft surface, top-side down.

- Remove the five 8.4 mm Phillips #0 screws.
- Remove the four 4.6 mm Phillips #0 screws.

Step 2



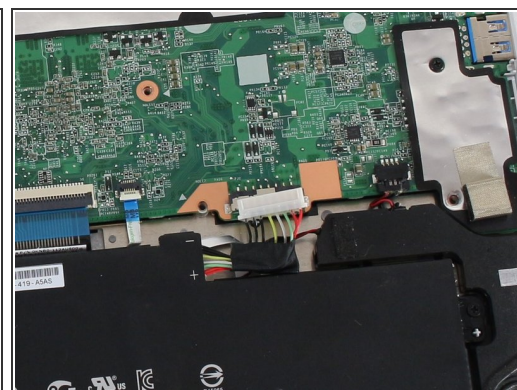
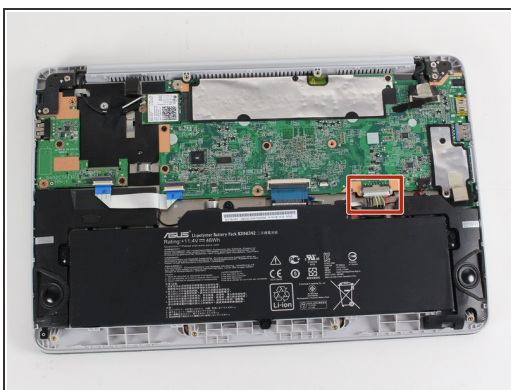
- Use the plastic opening tool to gently work around the edge of the Chromebook until the back panel starts to lift off.

Step 3



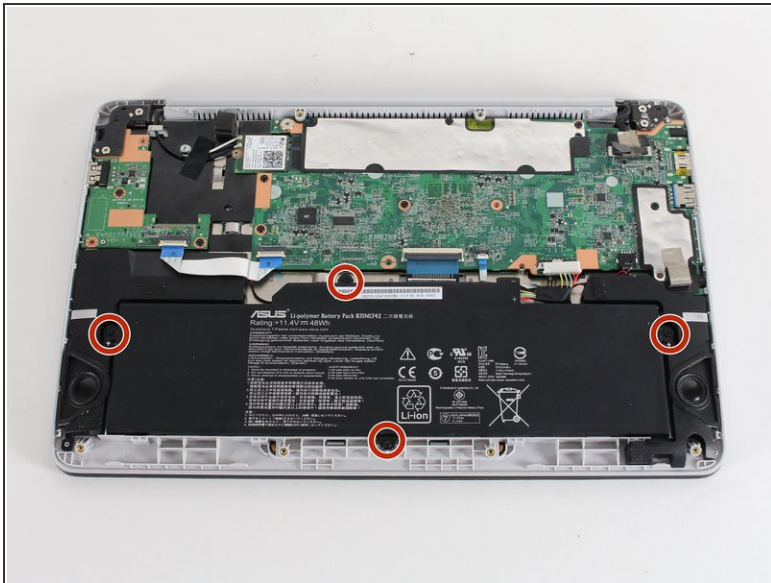
- Remove the back panel by lifting it away from the Chromebook.
- ❗ Some clicking will be heard as the panel is removed from the back, this is completely normal.

Step 4 — Battery Connection



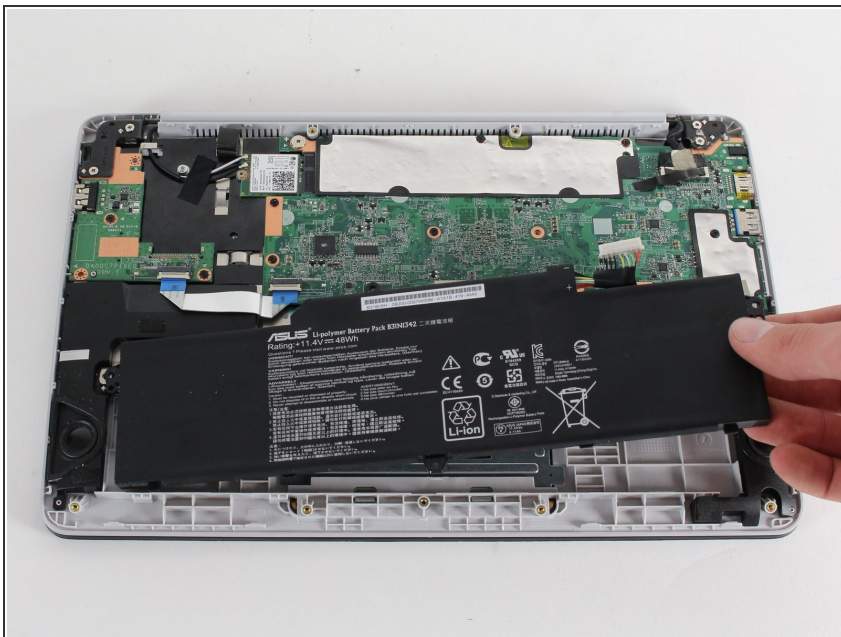
- To disconnect the battery, pinch the multi-color bundle cable with your thumb and forefinger and pull directly back.

Step 5 — Battery



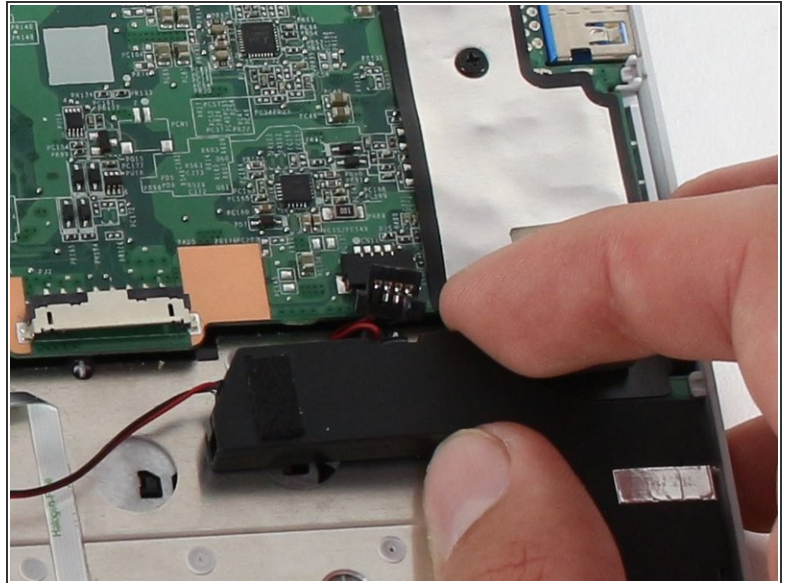
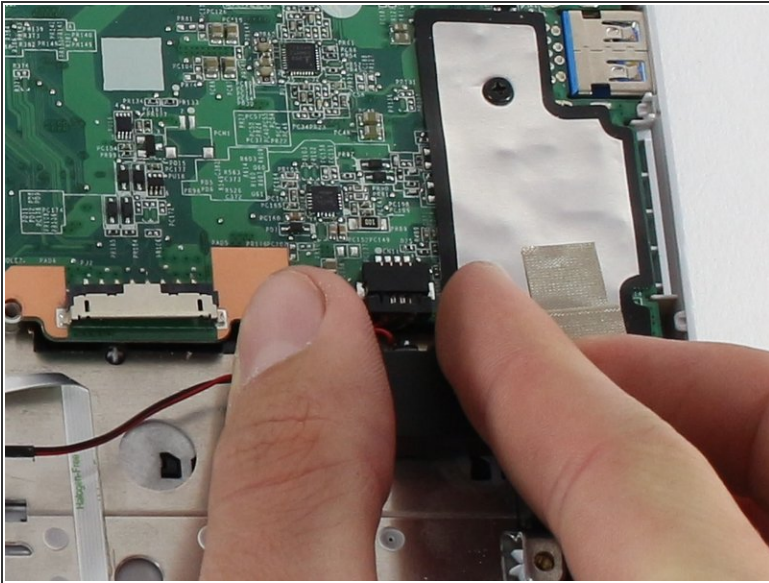
- Remove the four 4.7 mm Phillips #0 screws that secure the battery to the Chromebook.

Step 6



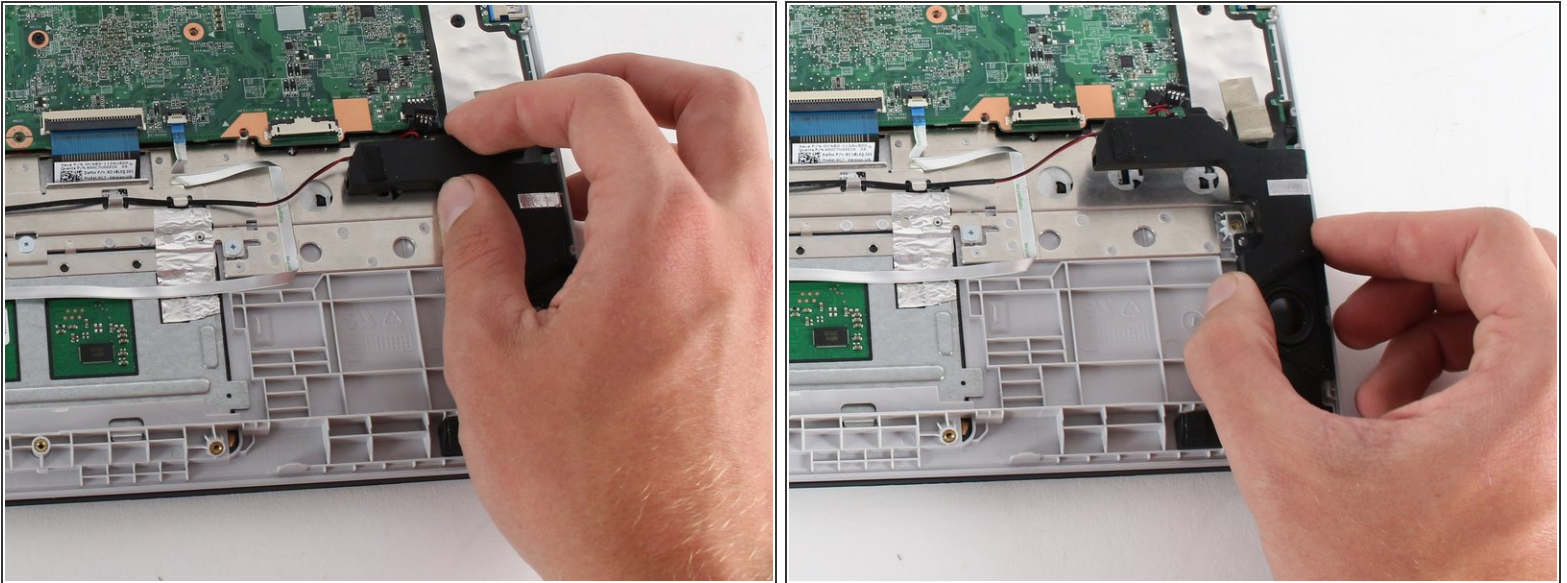
- Pull out the battery.

Step 7 — Speaker



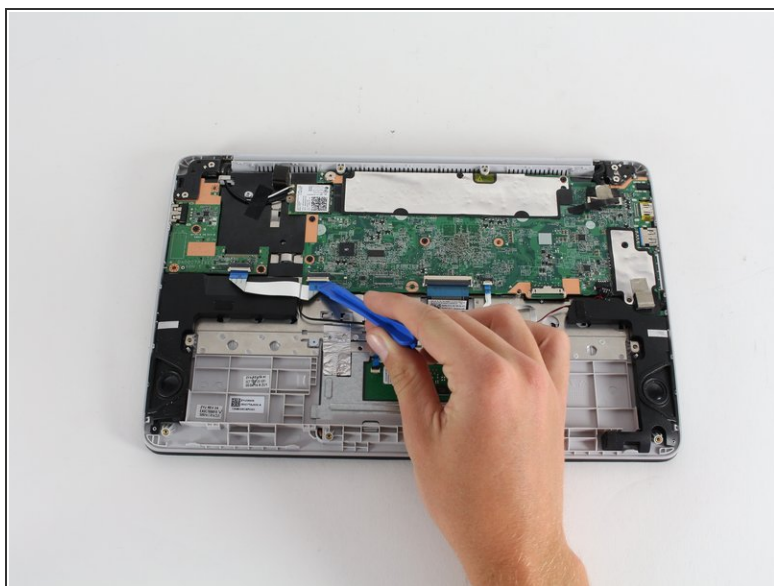
- Disconnect the speaker's black bundled cable connector on the motherboard.
 - ❗ The cables are red, white and black.
- Pinch the black bundled cable connector between your thumb and pointer finger and pull.

Step 8



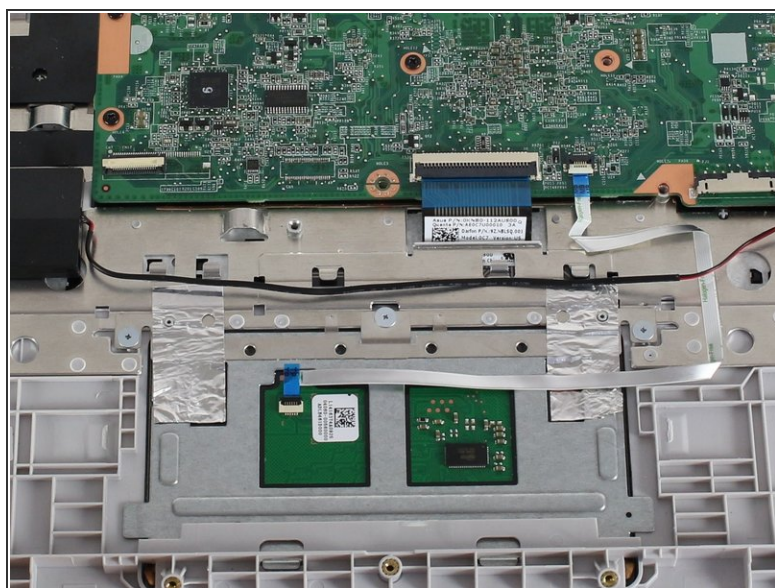
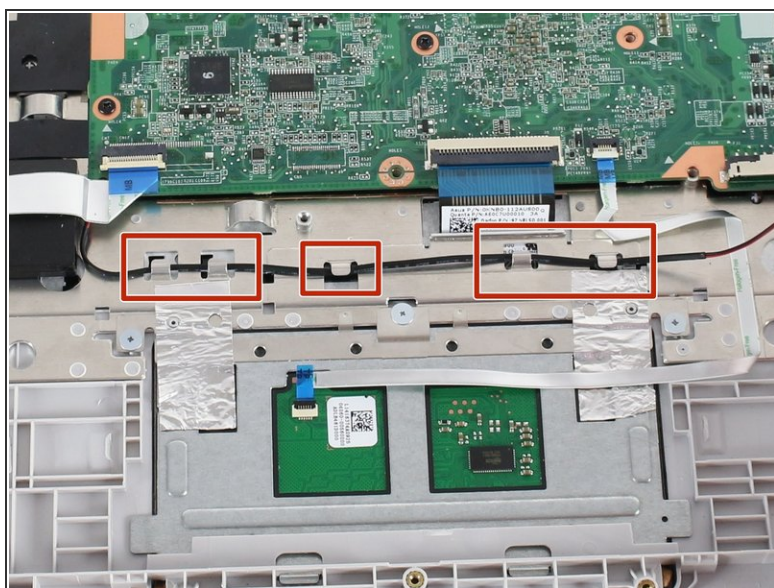
- Using your hands or the small plastic opening tool, pry the right speaker from the Chromebook.
- ⓘ There are small adhesives under the speakers that will provide moderate resistance.

Step 9



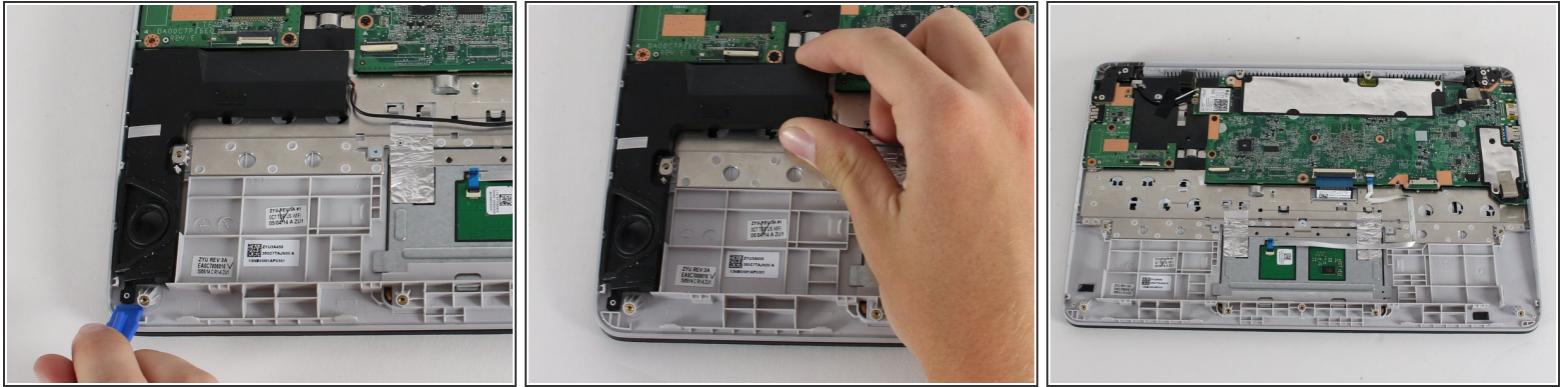
- Disconnect the USB port ZIF(zero insertion force) connector that partially covers the left speaker.
- Flip the ZIF retaining flap up using a spudger or your fingers.
- Pull gently on the ribbon cable to remove it from the connector.


Step 10



- Unravel the connecting cord between the two speakers.

Step 11



- Using the small plastic opening tool, pry the left speaker from the Chromebook.
 - Remove the speakers.
-  There are small adhesives that will provide moderate resistance.

To reassemble your device, follow these instructions in reverse order.