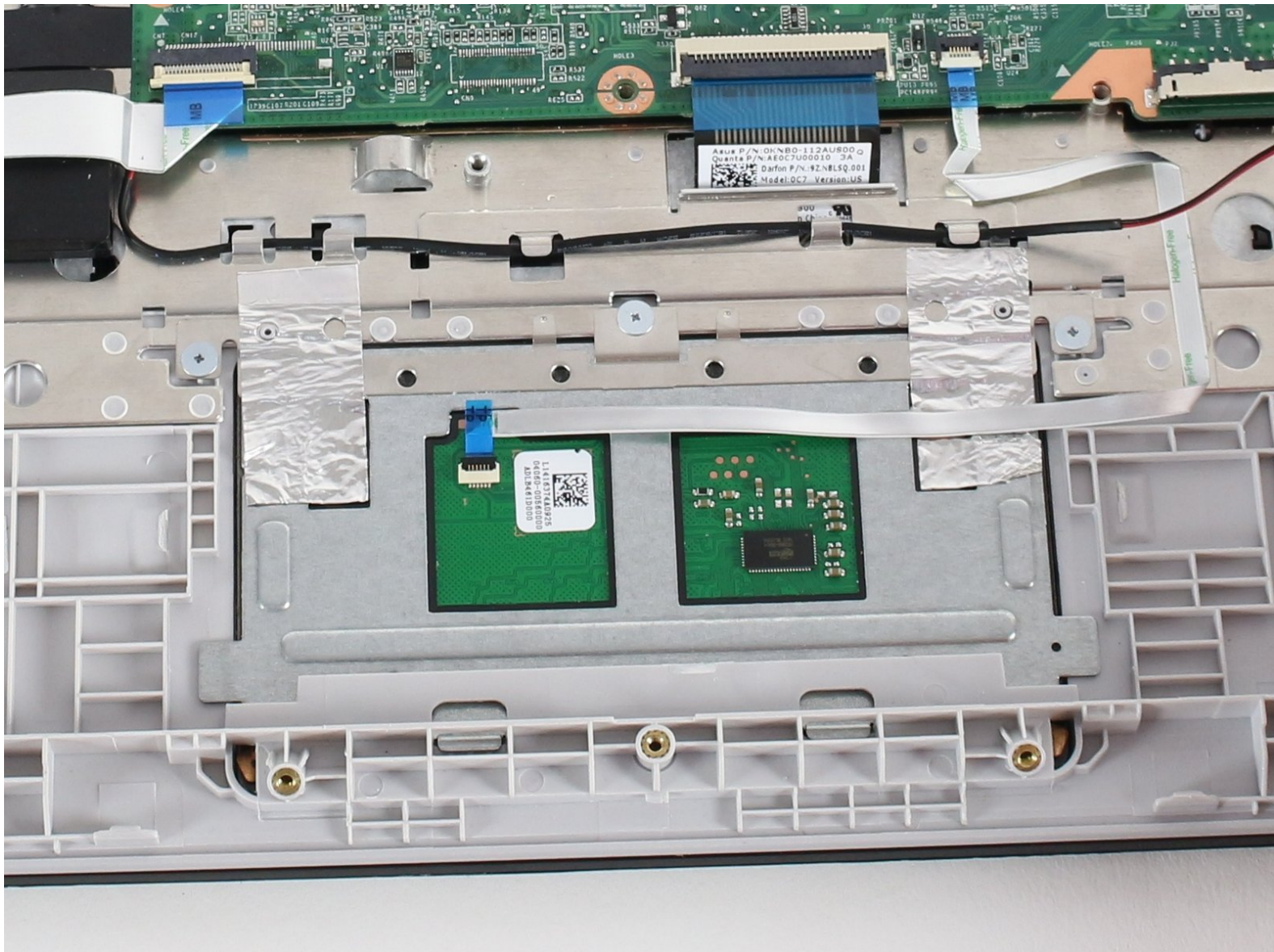




ASUS Chromebook C200MA DS01 Touchpad Replacement

Asus Chromebook C200ma touch pad replacement.

Written By: Christopher Lim



INTRODUCTION

This guide will take you through a step-by-step process for the removal of your Chromebook's touch pad.

TOOLS:

- [iFixit Opening Tools](#) (1)
 - [Phillips #0 Screwdriver](#) (1)
 - [Small Plastic Spudger](#) (1)
-

Step 1 — Back Panel



! Before proceeding, power down your Chromebook. Close the display and lay it on a soft surface, top-side down.

- Remove the five 8.4 mm Phillips #0 screws.
- Remove the four 4.6 mm Phillips #0 screws.

Step 2



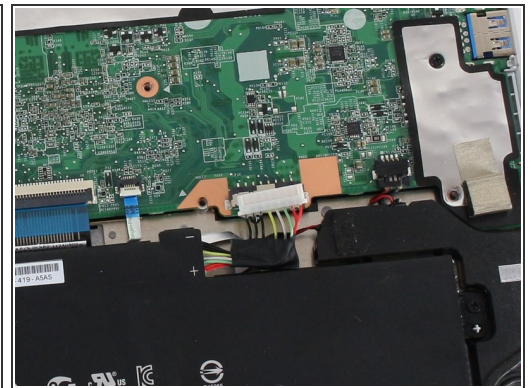
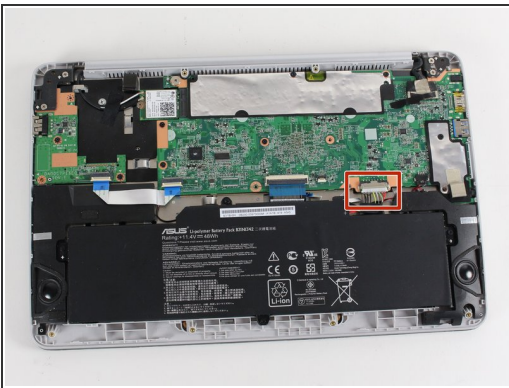
- Use the plastic opening tool to gently work around the edge of the Chromebook until the back panel starts to lift off.

Step 3



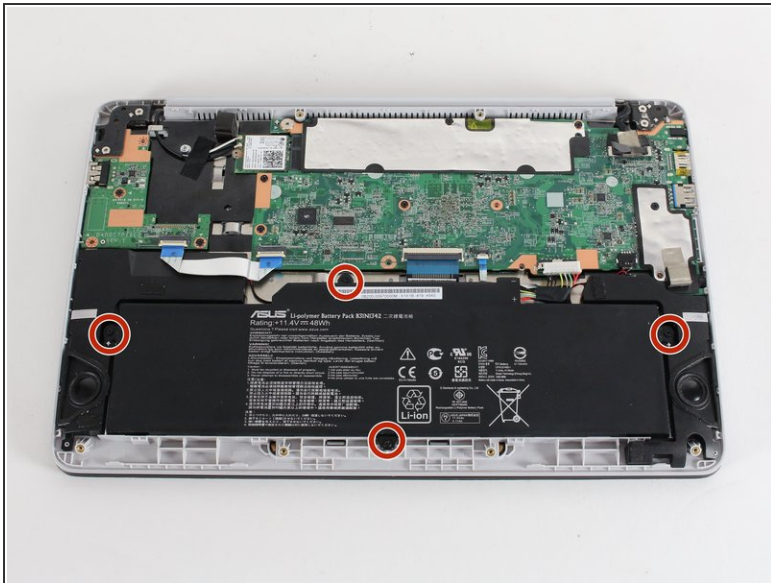
- Remove the back panel by lifting it away from the Chromebook.
- ❗ Some clicking will be heard as the panel is removed from the back, this is completely normal.

Step 4 — Battery Connection



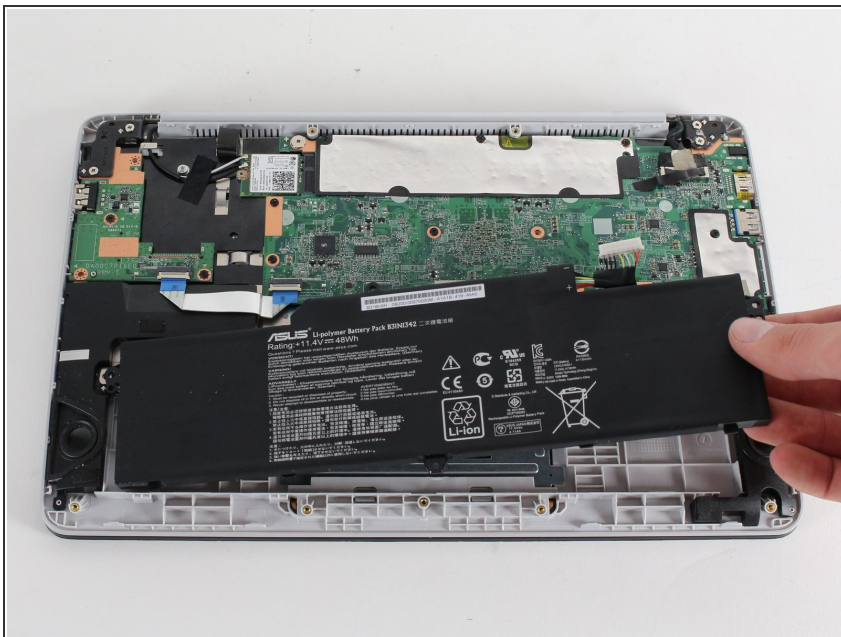
- To disconnect the battery, pinch the multi-color bundle cable with your thumb and forefinger and pull directly back.

Step 5 — Battery



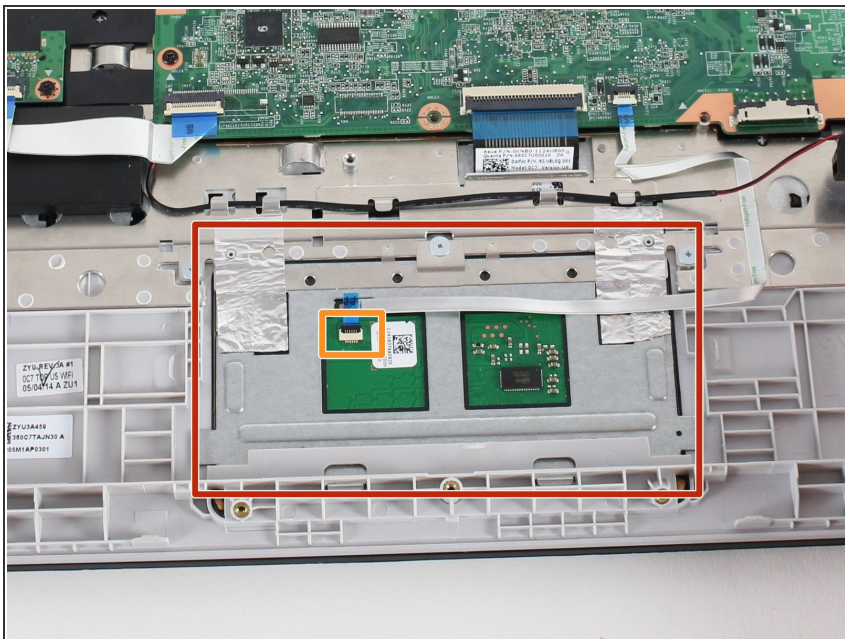
- Remove the four 4.7 mm Phillips #0 screws that secure the battery to the Chromebook.

Step 6



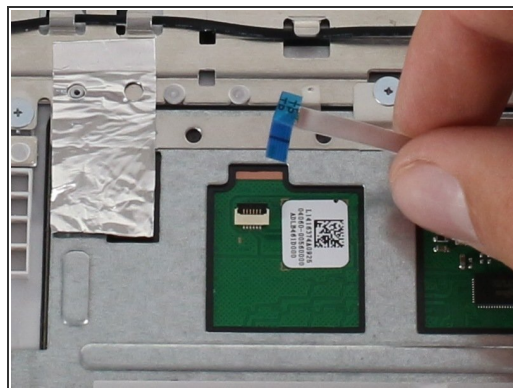
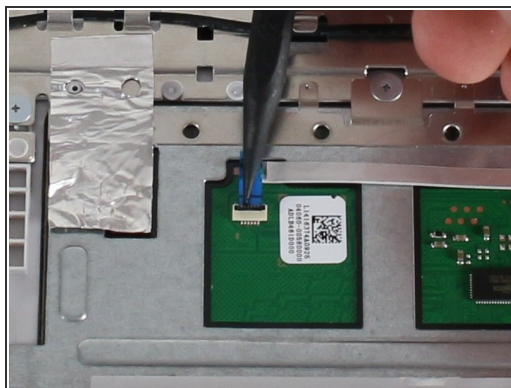
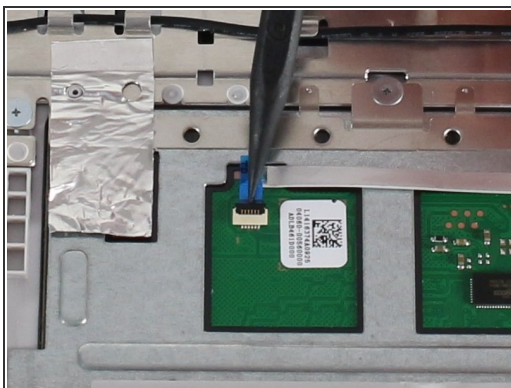
- Pull out the battery.

Step 7 — Touchpad



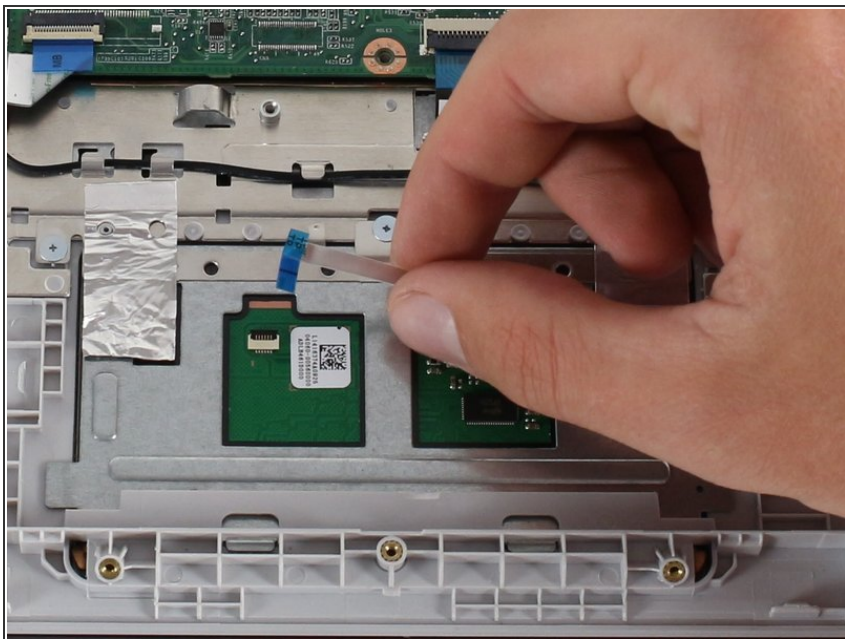
- Locate the touchpad.
- Locate the touch pad cable connector.

Step 8



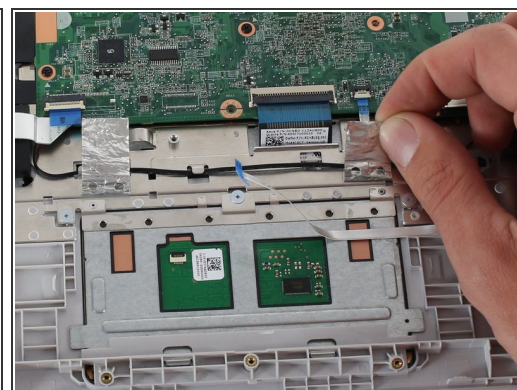
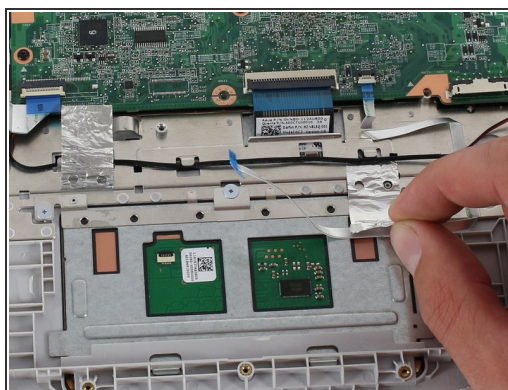
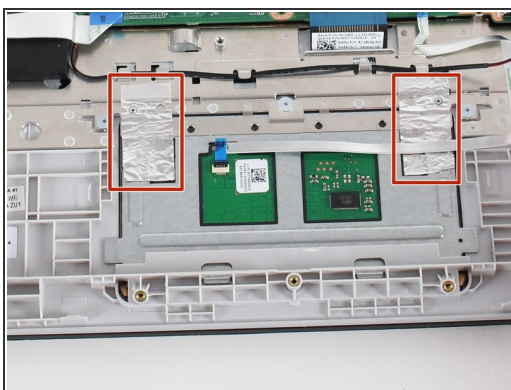
- Disconnect the touch pad ZIF(zero insertion force) connector.
- Flip the flap up using a spudger or your fingers.
- Pull gently on the ribbon cable to disconnect.

Step 9



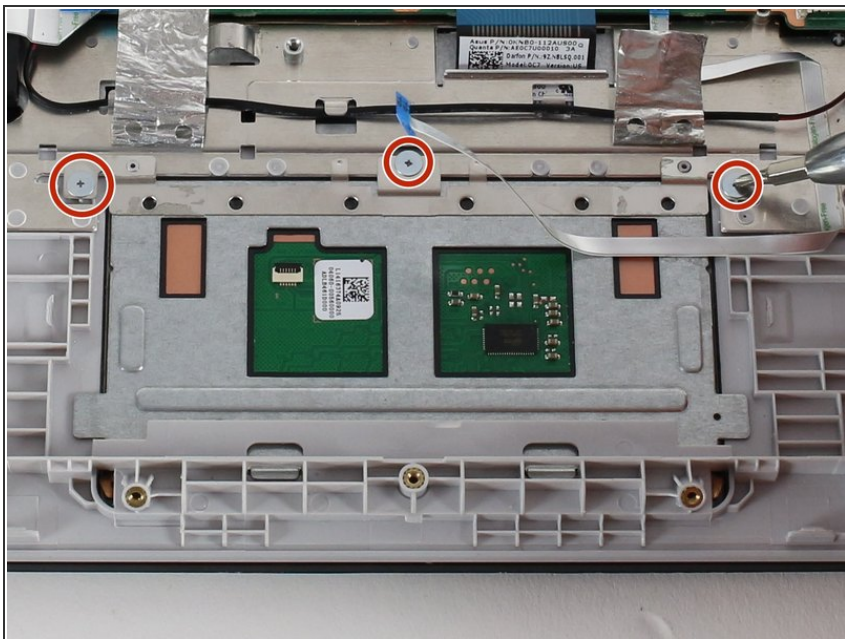
- Gently remove the adhesive on the touch pad ribbon cable.

Step 10



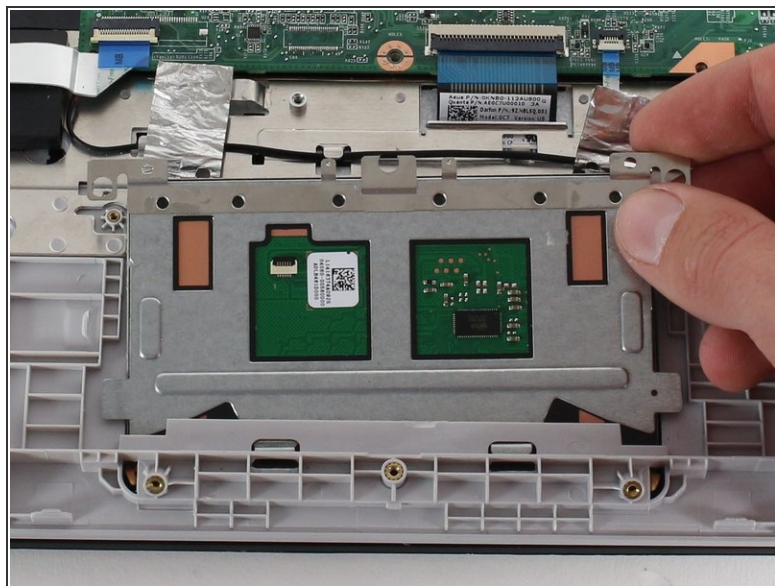
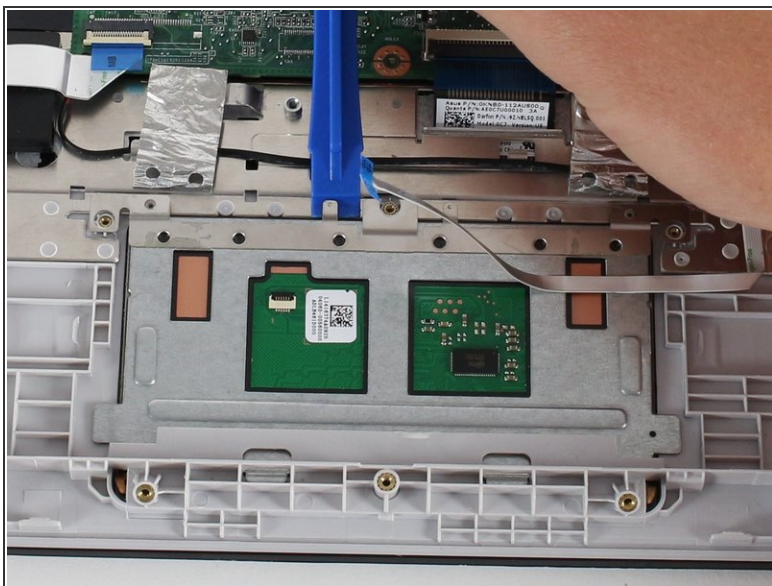
- Gently remove the metallic tape from the touch pad only.
- ⓘ Try not to tear the tape, it can be re-used during reassembly.

Step 11



- Remove the three 1.8 mm Phillips #00 screws.

Step 12



- Lift the far edge of the touch pad to remove it.

To reassemble your device, follow these instructions in reverse order.