

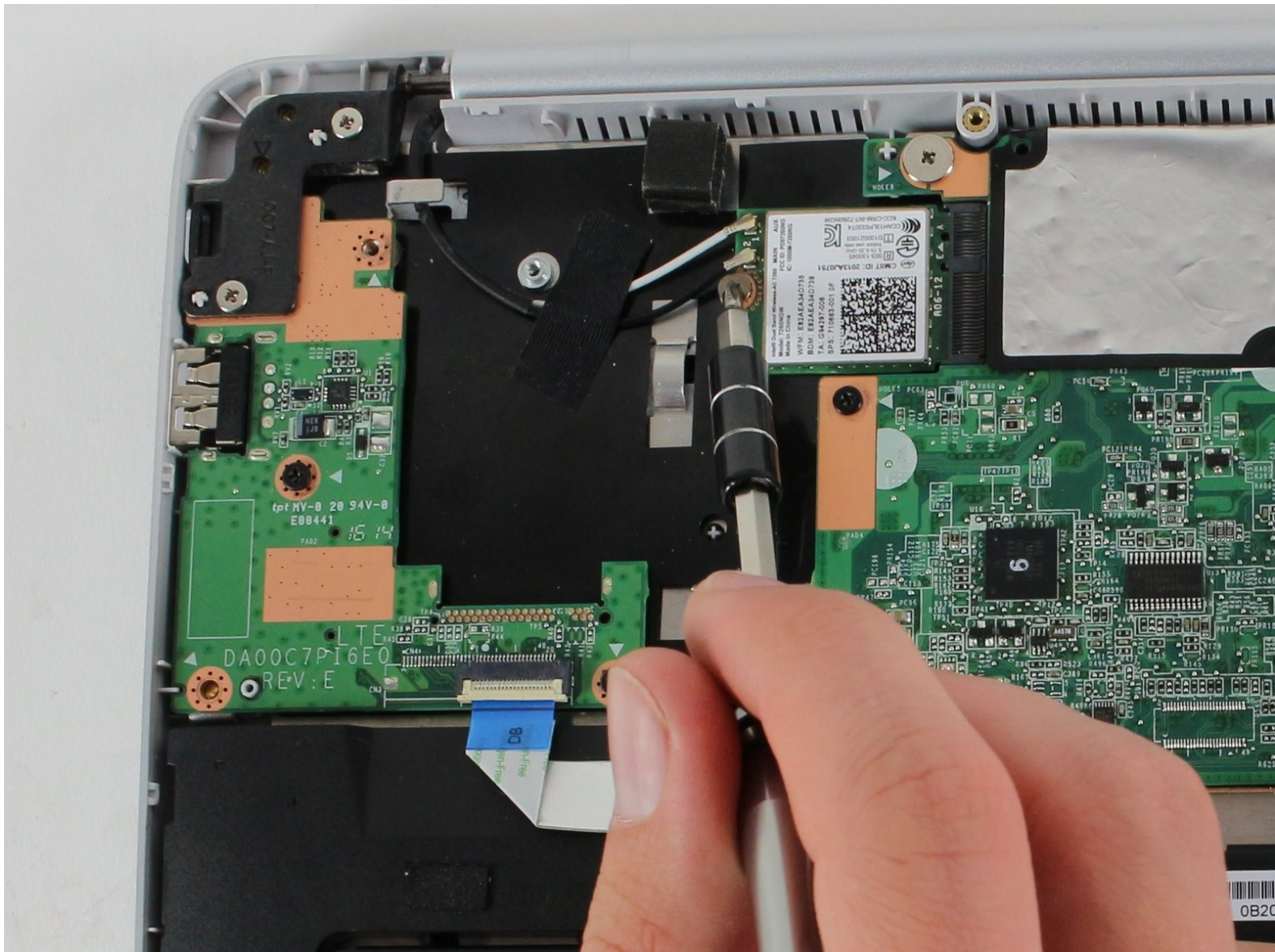


ASUS Chromebook C200MA DS01 Wireless

Card Replacement

Asus Chromebook C200ma Wireless Card replacement

Written By: Christopher Lim



INTRODUCTION

This guide will take you through a step-by-step process for the removal of your Chromebook's wireless card.



TOOLS:

- [iFixit Opening Tools](#) (1)
 - [Phillips #0 Screwdriver](#) (1)
 - [Spudger](#) (1)
-

Step 1 — Back Panel



! Before proceeding, power down your Chromebook. Close the display and lay it on a soft surface, top-side down.

- Remove the five 8.4 mm Phillips #0 screws.
- Remove the four 4.6 mm Phillips #0 screws.

Step 2



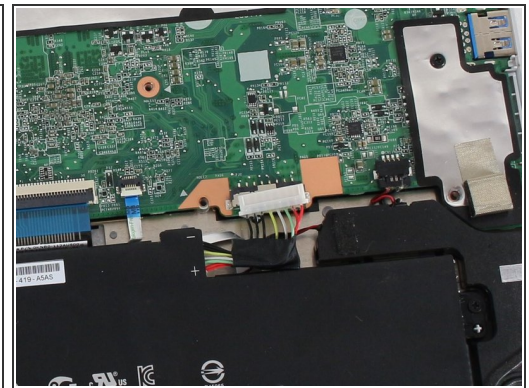
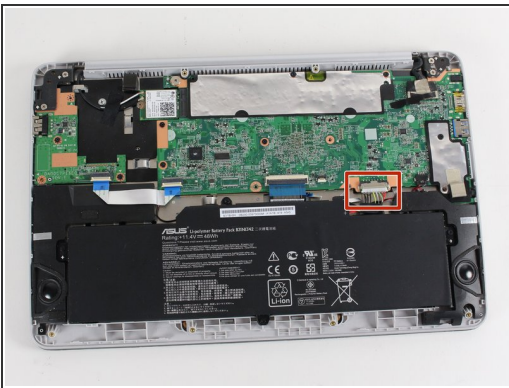
- Use the plastic opening tool to gently work around the edge of the Chromebook until the back panel starts to lift off.

Step 3



- Remove the back panel by lifting it away from the Chromebook.
- ❗ Some clicking will be heard as the panel is removed from the back, this is completely normal.

Step 4 — Battery Connection



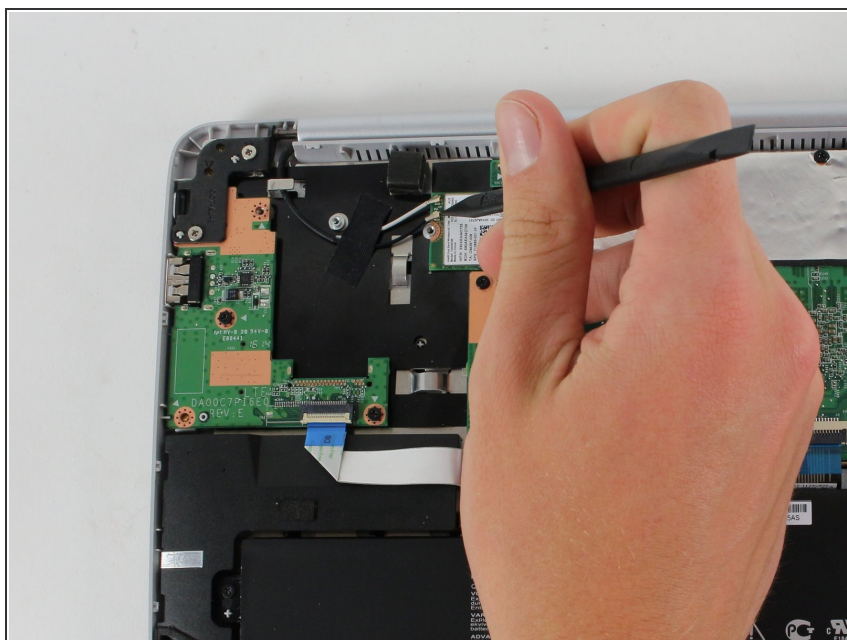
- To disconnect the battery, pinch the multi-color bundle cable with your thumb and forefinger and pull directly back.

Step 5 — Wireless Card



- Remove the silver 2.8 mm Phillips #0 screw from the wireless card.

Step 6



- Use a spudger to disconnect the white and black antenna cables connected to the wireless card.

Step 7



- Grab the wireless card between your thumb and index finger and pull directly away from the motherboard.

To reassemble your device, follow these instructions in reverse order.