



# ASUS Chromebook Flip C302CA-DHM4 LCD Digitizer w/ Bezel Replacement

This guide will show the steps involved to replace a broken LCD display, AU Optronics part number B125HAN02.2.

Written By: Dave Van Allen



This document was generated on 2020-04-04 12:38:42 PM (MST).



## TOOLS:

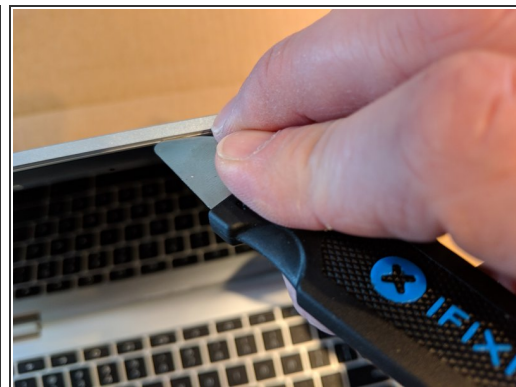
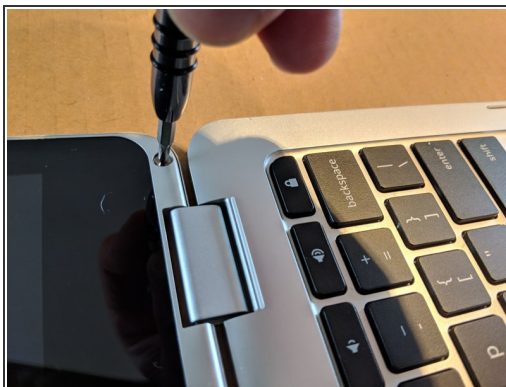
- [Spudger](#) (1)
- [Jimmy](#) (1)
- [Phillips #0 Screwdriver](#) (1)
- [Tweezers](#) (1)



## PARTS:

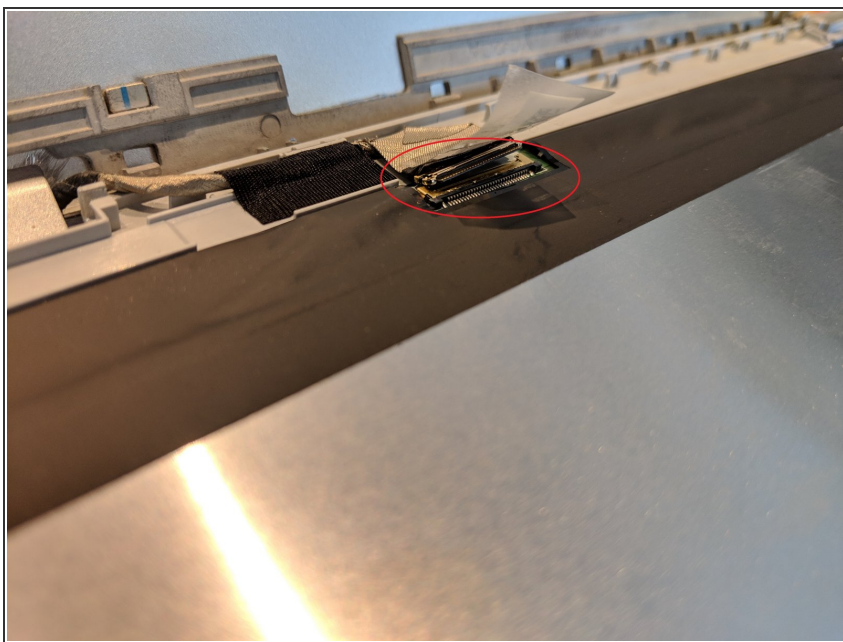
- [B125HAN02.2](#) (1)

## Step 1 — Remove Display



- Lay the Chromebook flat.
- Remove the two screws at the bottom of the display bezel.
- Using the Jimmy or a plastic opening tool, gently pry open the top and side edges of the display cover.

## Step 2 — Disconnect Display Wiring



- Pull back the clear tape with the Angled Precision Tweezers. Also pull back the black tape.
- Disconnect the LCD cable by gently pulling it back towards the hinge with the plastic spudger.



## Step 3 — Disconnect Digitizer



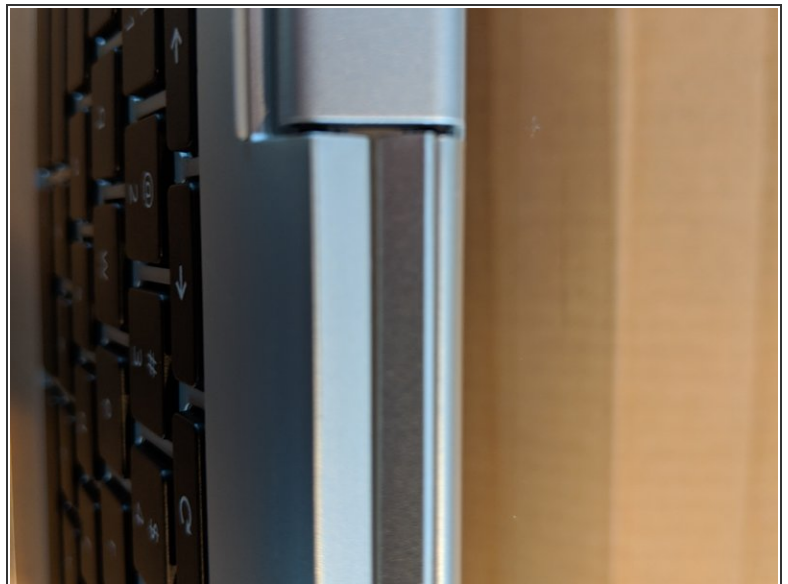
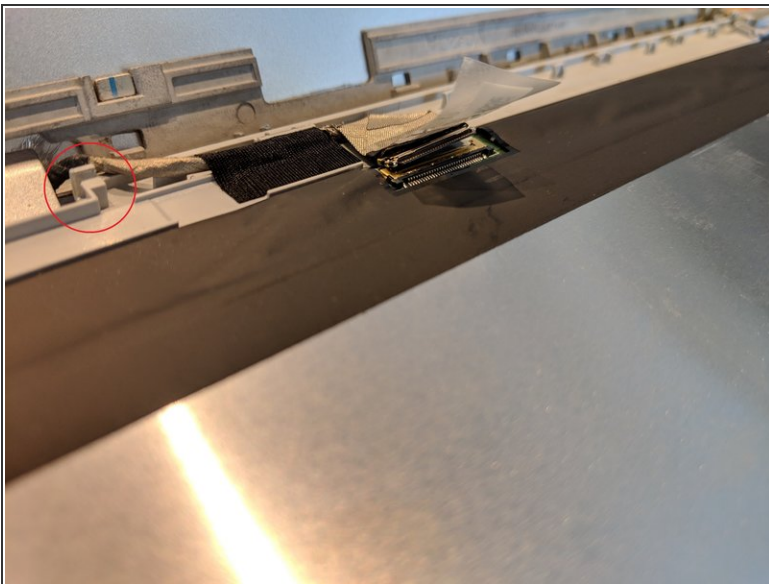
- To remove the thin cables for the digitizer, you must first open the fastener by flipping the off-white plastic edge closest to the LCD towards the outside edge of the frame.
- Once the fasteners have been opened, use two spudgers to remove each cable by unfolding and dragging them back towards the outside edge of the frame.
- To release circuit board, use a spudger tool to pry the gray clip back. Gently pull up on the left edge of the circuit board.
- The right edge of the circuit board is glued down. Using a spudger, pry up on the right edge to free it from the frame display.

## Step 4 — Release Digitizer and Webcam Wiring



- Use the Angled Tweezer to gently remove the brown wire from the channel. This wire travels from the hinge around the bottom edge and connects to the digitizer and webcam.

## Step 5 — Replace and Reassemble Display



- Follow the previous steps to replace the display just as you've removed it. Take care to ensure the LCD and Digitizer/Webcam cables are properly seated in the channels before sealing the lid.
- When the laptop lid is sealed, the hinge edge will lay uniformly flat.

To reassemble your device, follow these instructions in reverse order.