



ASUS D550MA-DS01 Battery Replacement

Is it time to replace your battery? This guide will show you how to remove the internal battery from your laptop.

Written By: Richard Johnson



INTRODUCTION

If your battery is broken or defective, this guide will show you how to replace your battery. The battery is located internally in the laptop and requires removal of the Keyboard Module for access.

Prerequisite Guides

[Keyboard Module Replacement](#)



TOOLS:

- [Phillips #1 Screwdriver](#) (1)
 - [Spudger](#) (1)
-

Step 1 — Keyboard Module



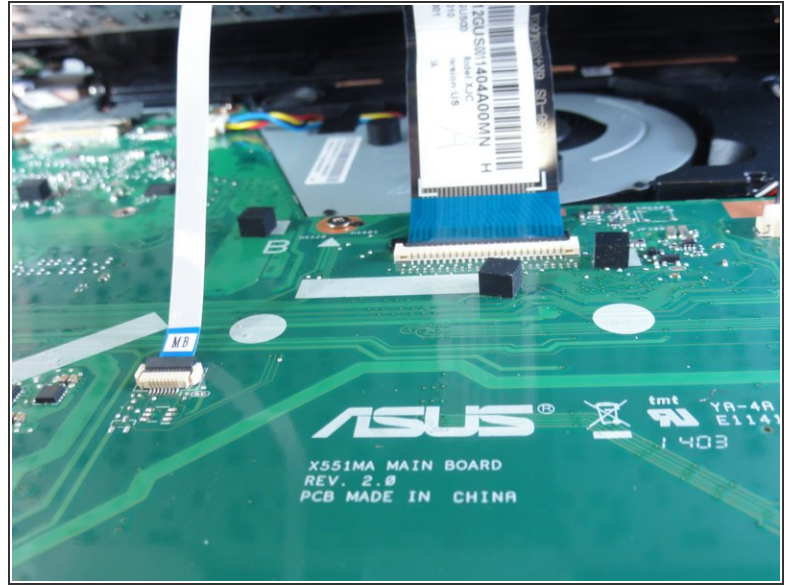
- Use the Philips #1 Screwdriver to remove the 9 screws that hold the keyboard cover in place.

Step 2



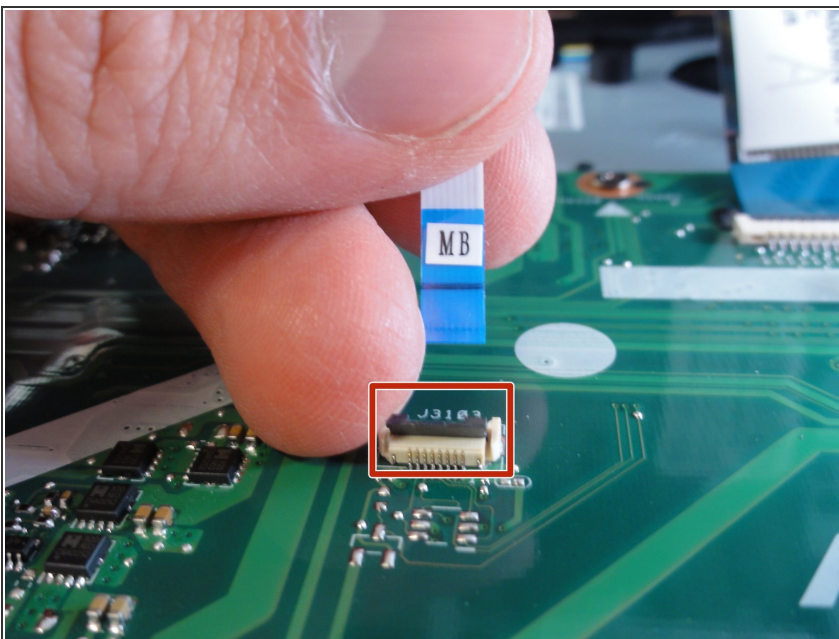
- Insert the flat edge of the spudger into the crease of the keyboard cover.
 - While the spudger is in the crease, carefully pry open the casing by sliding the spudger along the edge.
- ⚠ Do not use excessive force to pry open the lid. You should hear each plastic clip snap open as you run the spudger along the edge.

Step 3



- Make sure that the entire cover has been released from the plastic pins.
- Slowly lift the cover open from the front of the laptop, but do not completely remove.
- Note the locations of the 3 white and blue data cables connecting to the keyboard to the computer's main board.

Step 4



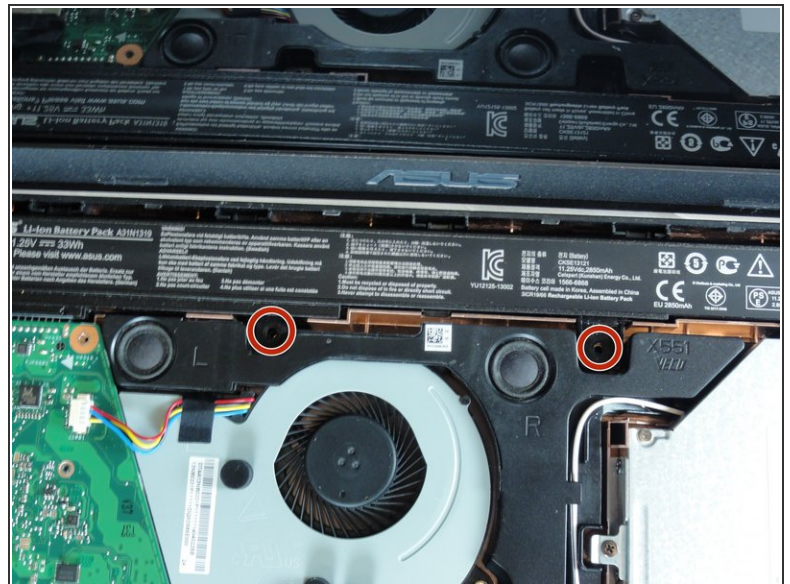
- Remove each data cable from the motherboard by using your finger or the black spudger to lift the black latch.
- The cable will slide out of its place.

Step 5



- With the data cables removed and the keyboard module fully disconnected, the keyboard module should come free from the laptop.

Step 6 — Battery



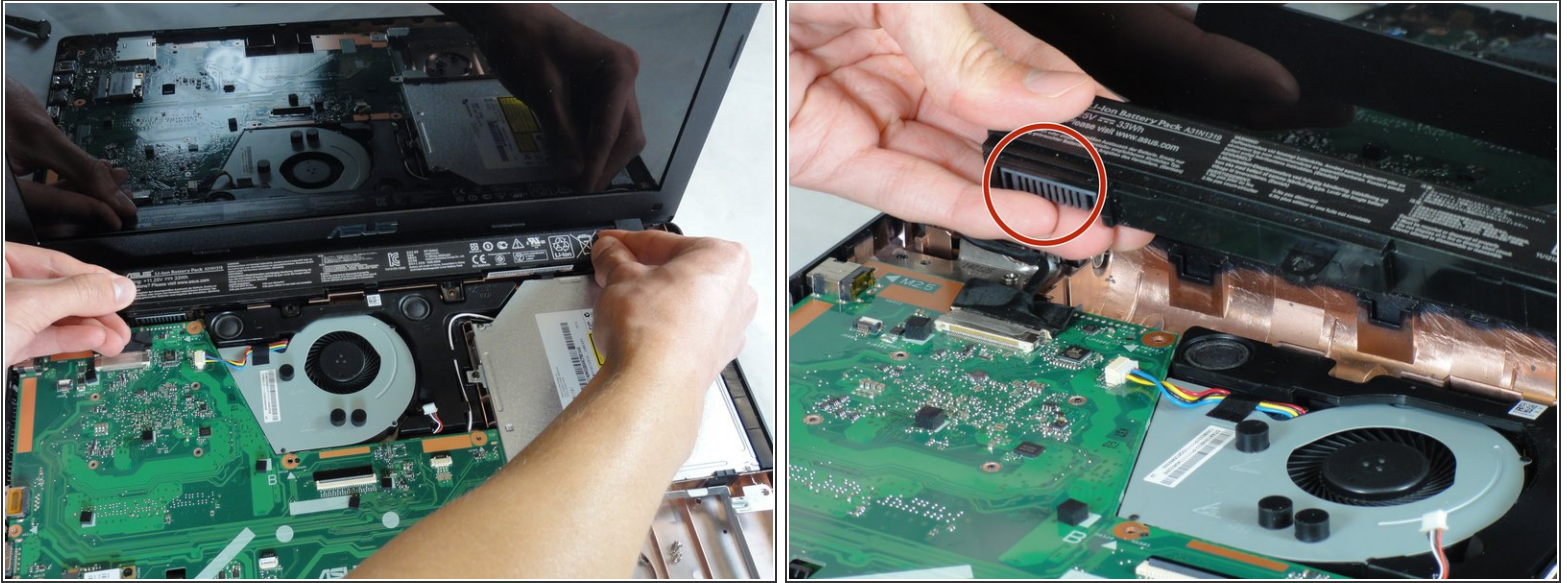
⚠ The manufacturer warns to only allow a professional to remove the battery. Do so at your own risk.

⚠ Do not use any metal tool to pry any type of battery. Doing so can puncture or short the battery, resulting in damage or injury.

- Remove the two screws securing the battery to the laptop case with the Phillips #1 screwdriver.

This document was generated on 2019-10-01 03:21:39 PM (MST).

Step 7



- After removing the 2 screws, pull out the battery.
- ✦ The battery is connected to the motherboard on the left side.
 - Use your finger tips to evenly grip the battery on the left and right sides of the battery.
 - Pull straight up to lift the battery out of its place.
 - If you find yourself having trouble pulling out the battery, push the battery back in place and attempt to lift straight out again.
- ⓘ Do not use excessive force or attempt to pry the battery with any tools. Doing so will result in damage to the laptop.

To reassemble your device, follow these instructions in reverse order.