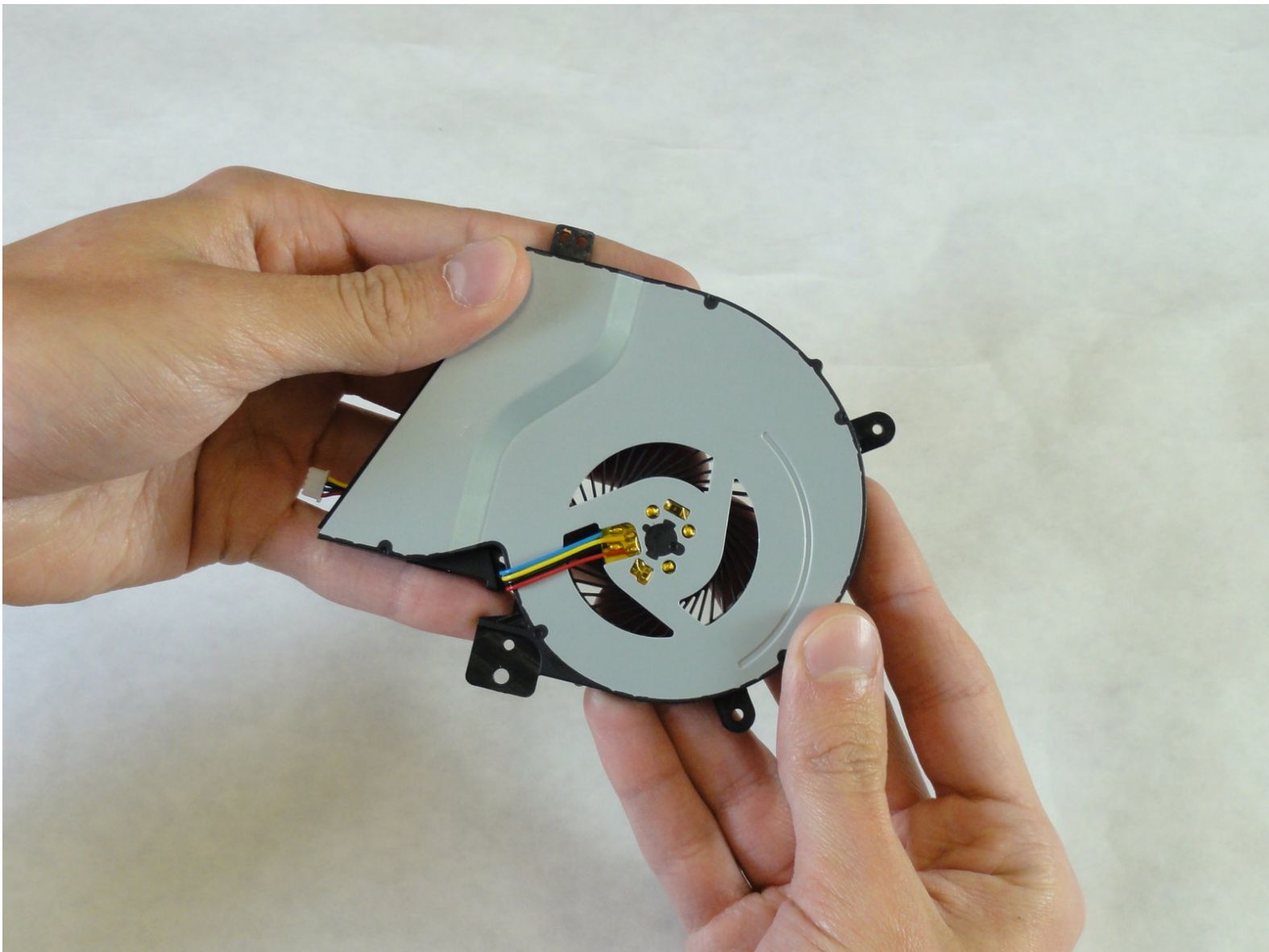




ASUS D550MA-DS01 Fan Replacement

If your fan has stopped working, then this guide will show you how to replace it.

Written By: Calvin Wieczorek



INTRODUCTION

If cooling has become an issue in your computer and your fan is not getting the job done, then it may be time to replace your fan. This guide will show you how to replace the fan in your laptop.



TOOLS:

- [Phillips #1 Screwdriver](#) (1)
 - [Phillips #0 Screwdriver](#) (1)
 - [Spudger](#) (1)
 - [Tweezers](#) (1)
-

Step 1 — Keyboard Module



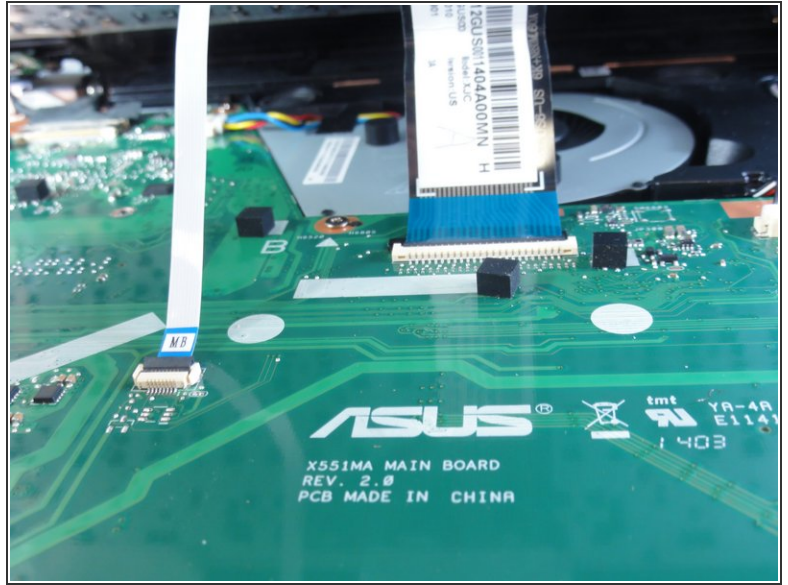
- Use the Philips #1 Screwdriver to remove the 9 screws that hold the keyboard cover in place.

Step 2



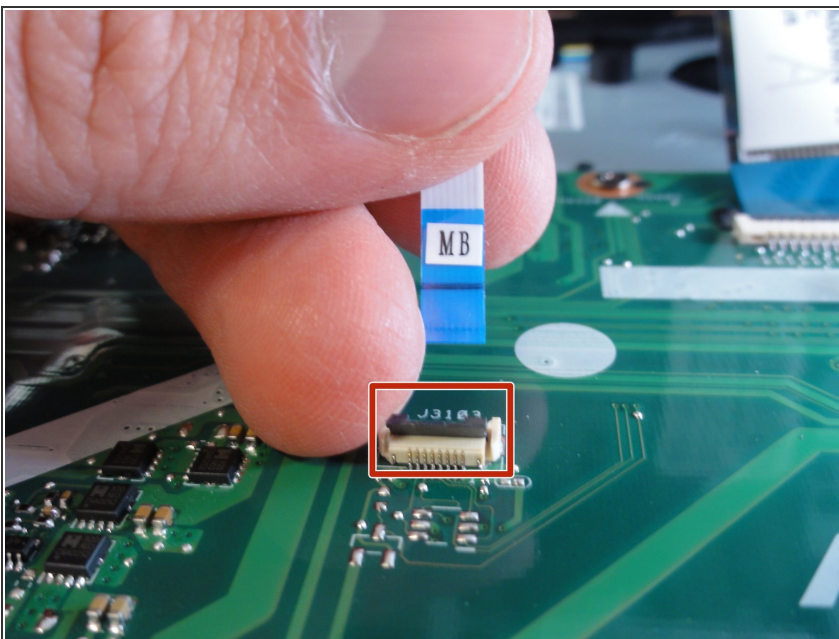
- Insert the flat edge of the spudger into the crease of the keyboard cover.
 - While the spudger is in the crease, carefully pry open the casing by sliding the spudger along the edge.
- ⚠ Do not use excessive force to pry open the lid. You should hear each plastic clip snap open as you run the spudger along the edge.

Step 3



- Make sure that the entire cover has been released from the plastic pins.
- Slowly lift the cover open from the front of the laptop, but do not completely remove.
- Note the locations of the 3 white and blue data cables connecting to the keyboard to the computer's main board.

Step 4



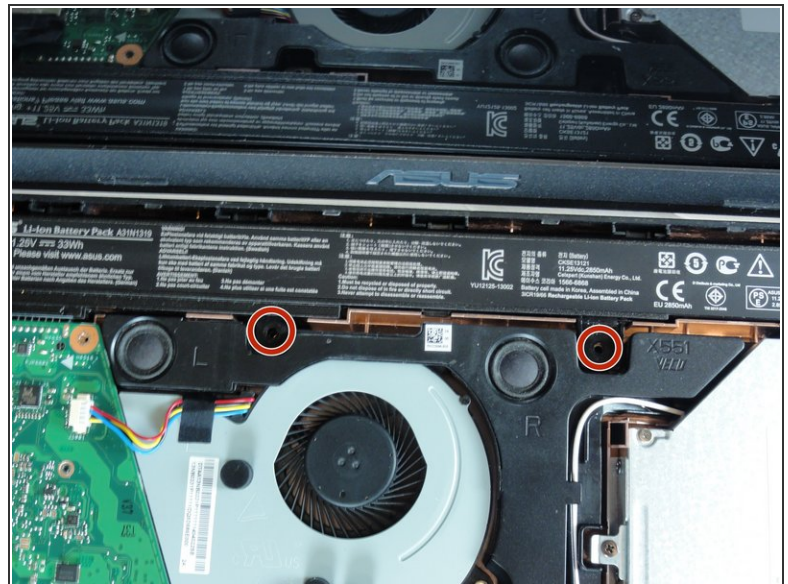
- Remove each data cable from the motherboard by using your finger or the black spudger to lift the black latch.
- The cable will slide out of its place.

Step 5



- With the data cables removed and the keyboard module fully disconnected, the keyboard module should come free from the laptop.

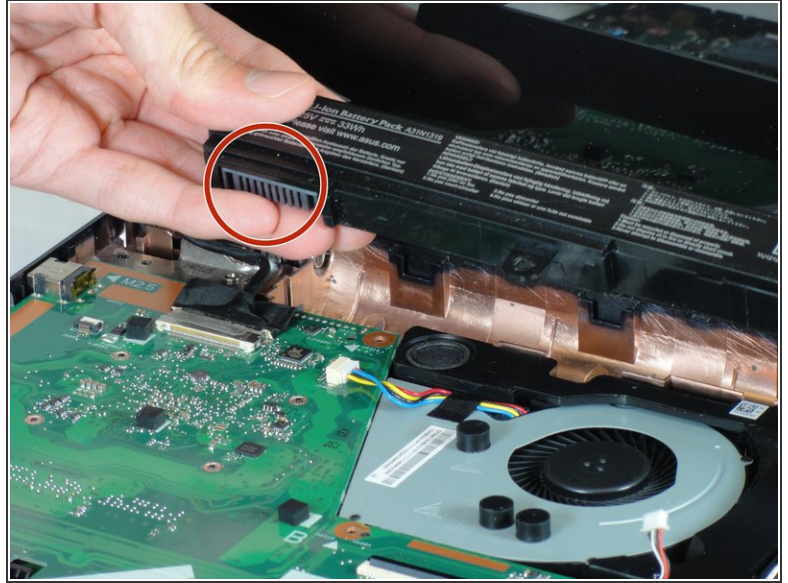
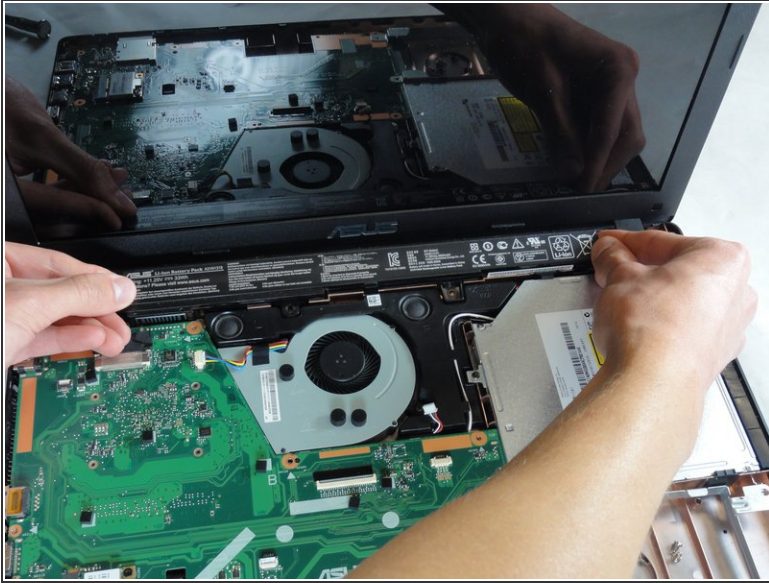
Step 6 — Battery



- ⚠ The manufacturer warns to only allow a professional to remove the battery. Do so at your own risk.
- ⚠ Do not use any metal tool to pry any type of battery. Doing so can puncture or short the battery, resulting in damage or injury.
- Remove the two screws securing the battery to the laptop case with the Phillips #1 screwdriver.

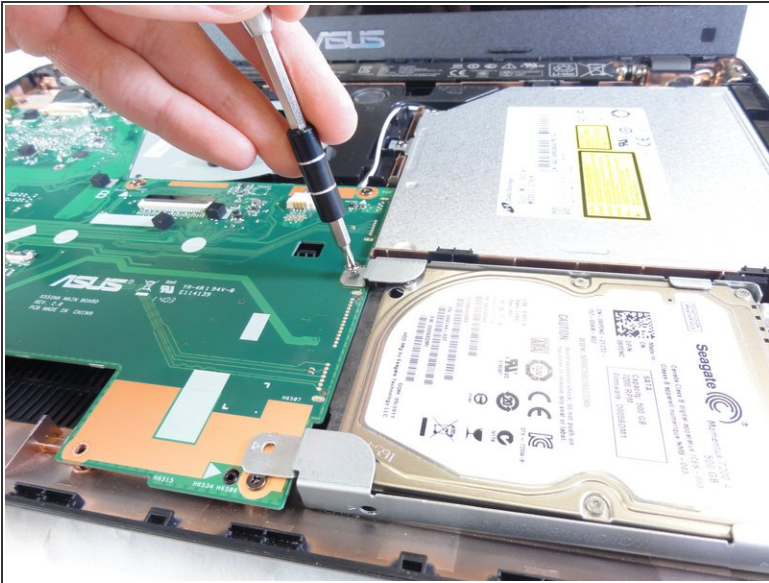
This document was generated on 2019-09-28 02:32:09 PM (MST).

Step 7



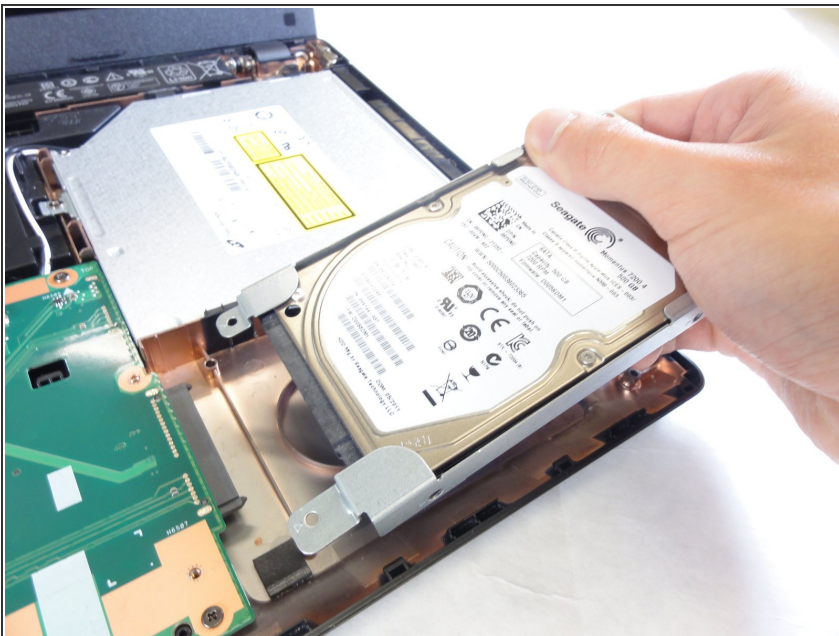
- After removing the 2 screws, pull out the battery.
- ✦ The battery is connected to the motherboard on the left side.
 - Use your finger tips to evenly grip the battery on the left and right sides of the battery.
 - Pull straight up to lift the battery out of its place.
 - If you find yourself having trouble pulling out the battery, push the battery back in place and attempt to lift straight out again.
- ⓘ Do not use excessive force or attempt to pry the battery with any tools. Doing so will result in damage to the laptop.

Step 8 — Hard Drive



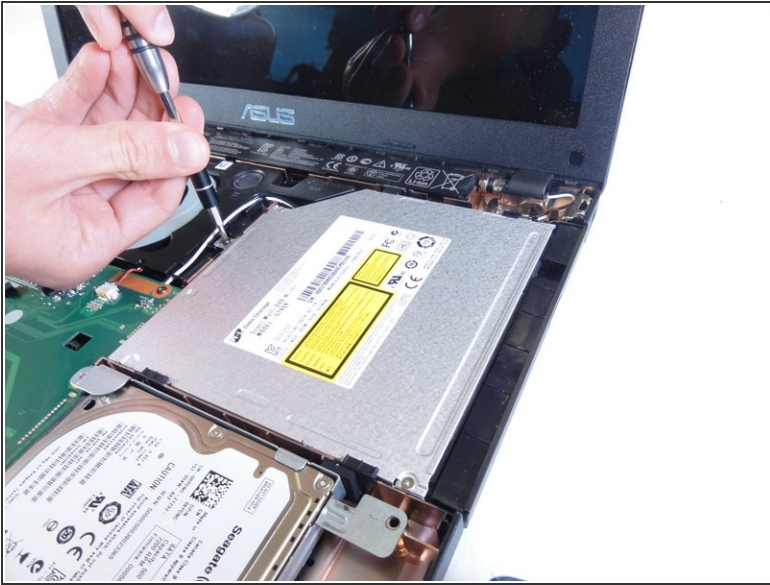
- Remove the four screws that hold the hard drive in place with the Philips #1 screwdriver.
- i** There are two screws connected to the motherboard and two screws connected directly to the case.

Step 9



- Remove the hard drive by sliding it to the right to disconnect it from the motherboard and lifting out.
- !** Be sure to fully disconnect the hard drive from the motherboard to ensure that you do not damage the connectors.
- i** If necessary, unscrew the old hard drive from the holster and screw the new one into the holster.

Step 10 — DVD Drive



- Remove the single screw that is holding the drive in place using the Phillips #1 Screwdriver.

Step 11



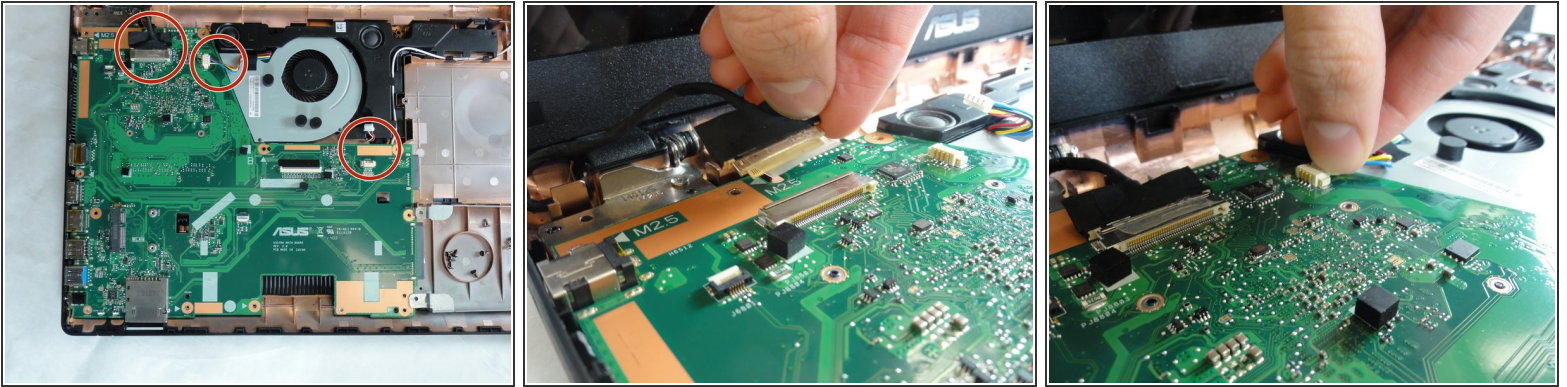
- Slide the drive out to the right of the laptop to disconnect from the motherboard.
- ⚠️ Lifting the drive straight out without sliding to the right will damage the motherboard.

Step 12 — Motherboard





- Remove the 9 screws from the motherboard using the Philips #1 screwdriver.
- ⓘ While unscrewing the screws, it may be helpful to use the tweezers to keep control of the screws.

Step 13

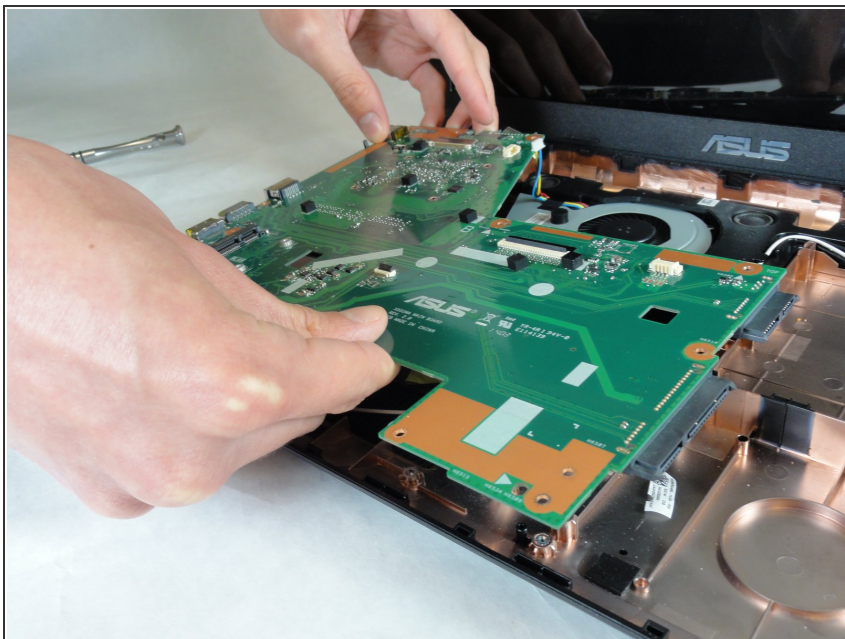


- Disconnect the three cables attached to the motherboard.

 Do not pull the cables by their wires. This can lead to damage to the cables.

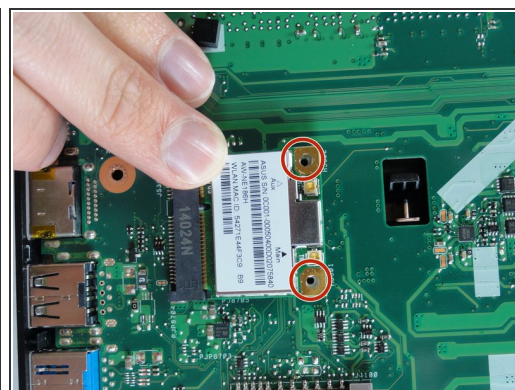
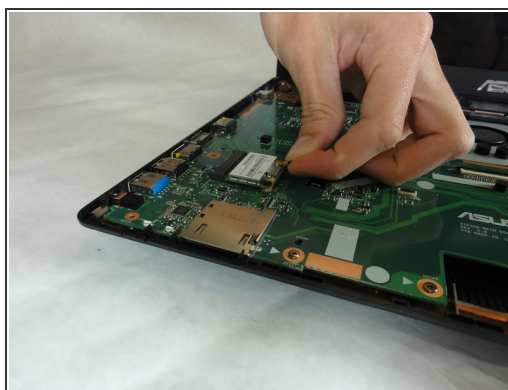
- The large, black cable is connected to the screen. Carefully wiggle the cable out by gripping the black tape with your fingers.
-  There may be clear tape holding the screen connector in place.
- The cable for the fan and speaker use similar connectors. Use the black spudger or carefully grip the sides of each connector with your fingers to slowly pull them out.

Step 14



- Pull the motherboard to the right to clear the peripheral connections of the laptop casing.
- Lift the motherboard out of the laptop.

Step 15 — Wireless Network Card



- Locate the Network Interface Card (NIC) on the motherboard.
- ⓘ Note the orientation of the white and black wires on your NIC. The may connection differ from the picture.
- Gently disconnect the white and black wires by pulling it off of the NIC card. These wires should come off easy.
- ⓘ If you are following these steps for the prerequisite to remove the motherboard, you do not need to completely remove the NIC. Just remove the wires. The proceeding step can be skipped.

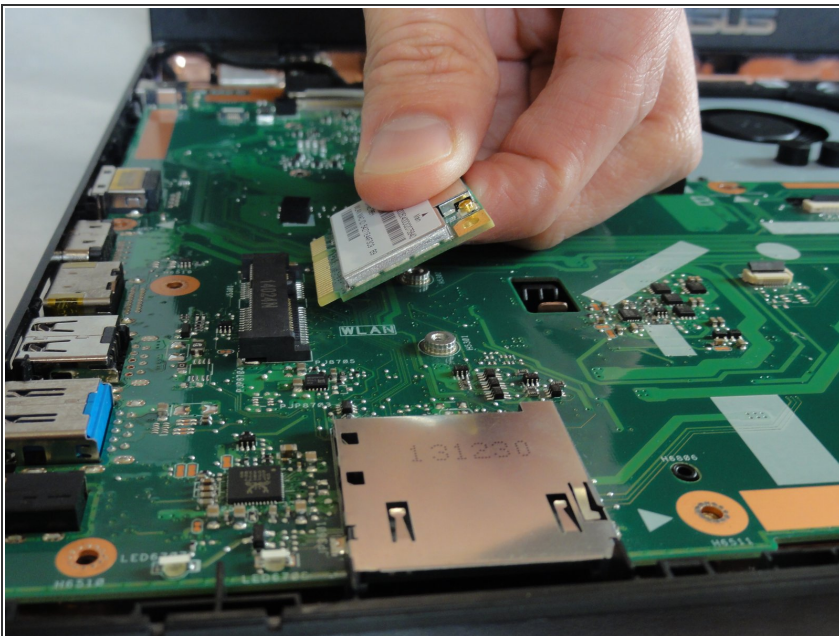
Step 16



- Remove the screws that are holding down the wireless network card with the Phillips #1 screwdriver.

i After removing the screws, the NIC will lift up in a spring action.

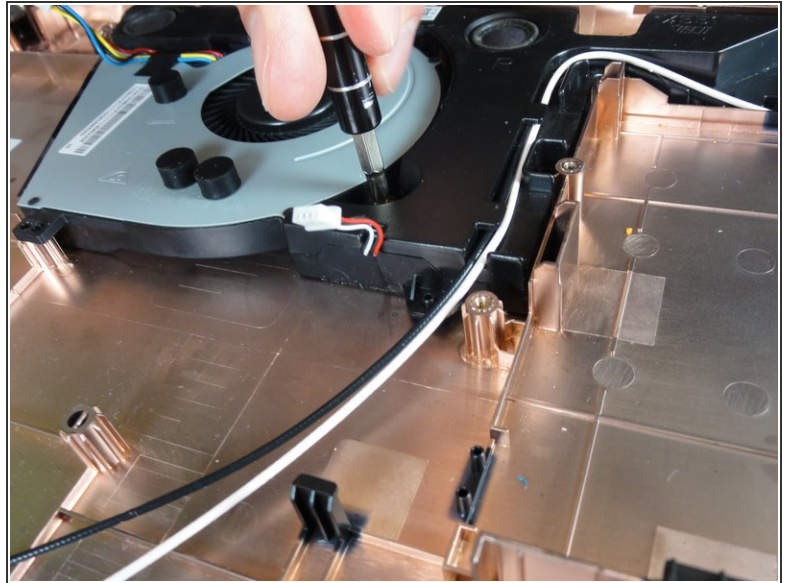
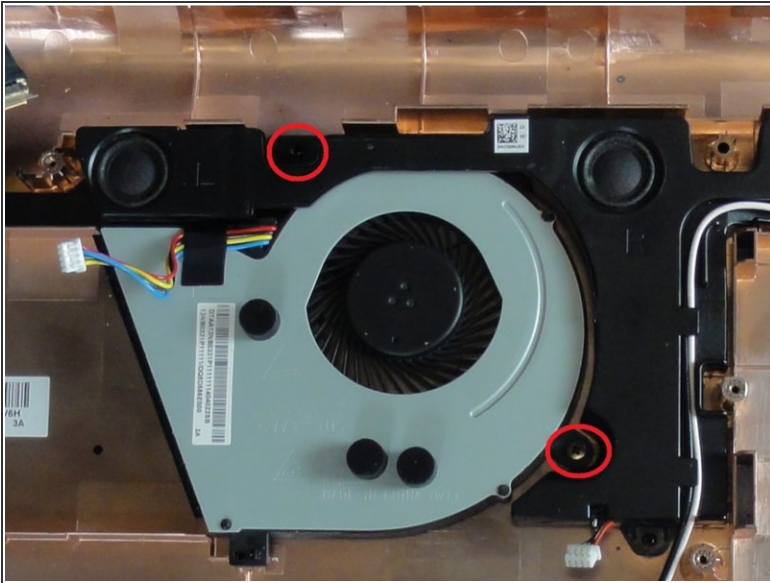
Step 17



- Gently pull out the NIC.

! Do not use excessive force or wiggle the card out. The NIC should slide out easily.

Step 18 — Fan



- Remove the two screws shown with the Philips #1 screwdriver.

Step 19



- Carefully slide out fan.
- The fan is difficult to maneuver out. Carefully wiggle the fan towards you before attempting to lift it out.
- ⓘ If you attempt to lift the fan before freeing it from the speaker housing, it will get stuck. In this case, push the fan back into its place and try again.

To reassemble your device, follow these instructions in reverse order.