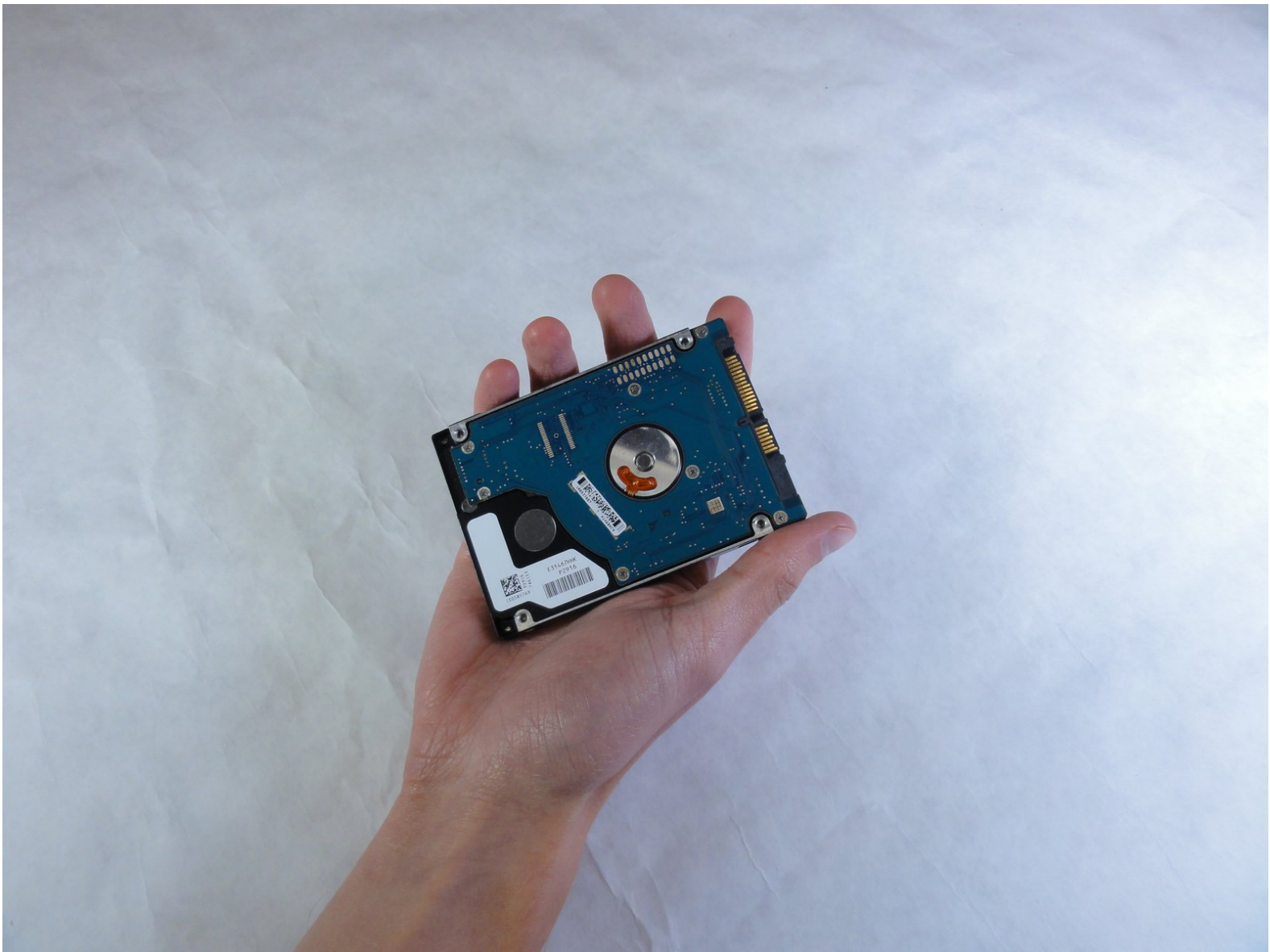




# ASUS D550MA-DS01 Hard Drive Replacement

This is a tutorial on how to remove the hard drive for your ASUS D550MA. Removing the keyboard module is a prerequisite to this guide.

Written By: Richard Johnson



# INTRODUCTION

If you need to replace your hard drive because it is broken or in need of upgrading, this is the guide for you! In order to go ahead with this guide, you must have already taken the keyboard module off of the laptop. Please visit the prerequisite guide for more details.



## TOOLS:

- [Phillips #1 Screwdriver](#) (1)
  - [Spudger](#) (1)
-

## Step 1 — Keyboard Module



- Use the Philips #1 Screwdriver to remove the 9 screws that hold the keyboard cover in place.

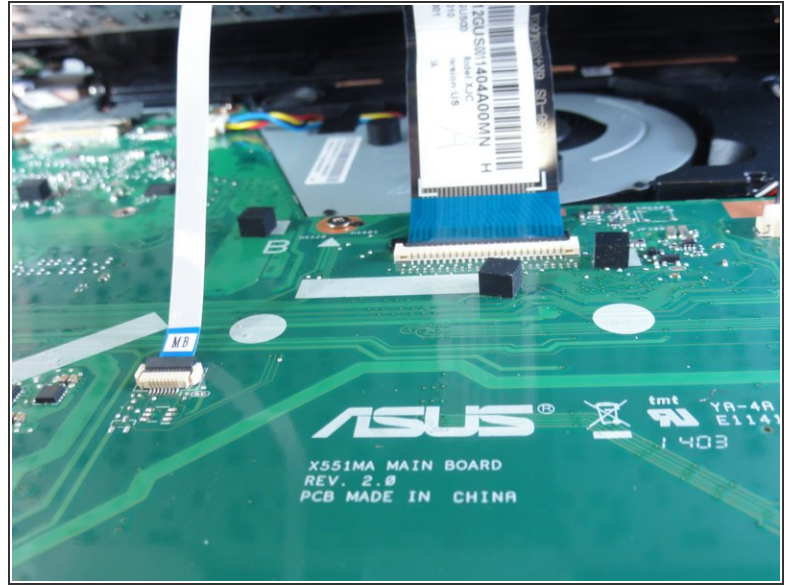
## Step 2



- Insert the flat edge of the spudger into the crease of the keyboard cover.
  - While the spudger is in the crease, carefully pry open the casing by sliding the spudger along the edge.
- ⚠ Do not use excessive force to pry open the lid. You should hear each plastic clip snap open as you run the spudger along the edge.

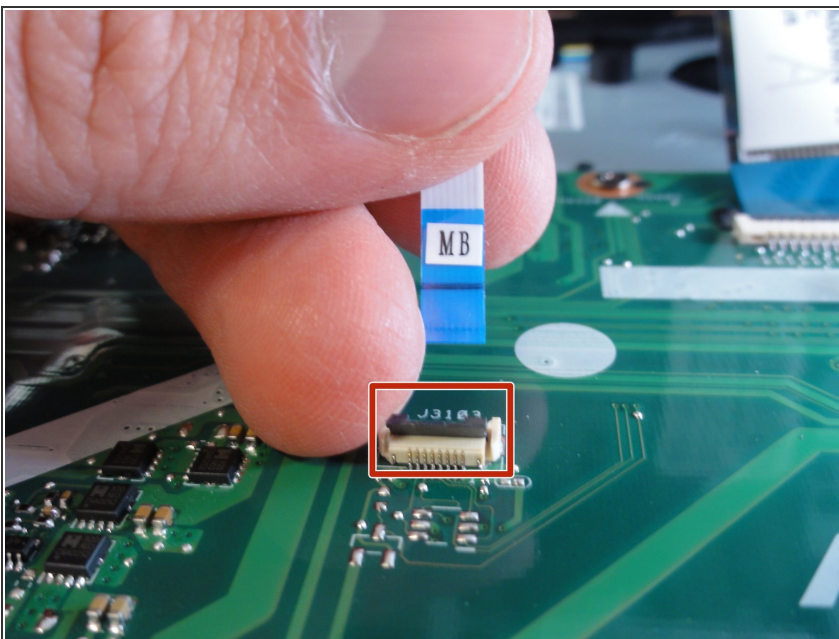


## Step 3



- Make sure that the entire cover has been released from the plastic pins.
- Slowly lift the cover open from the front of the laptop, but do not completely remove.
- Note the locations of the 3 white and blue data cables connecting to the keyboard to the computer's main board.

## Step 4



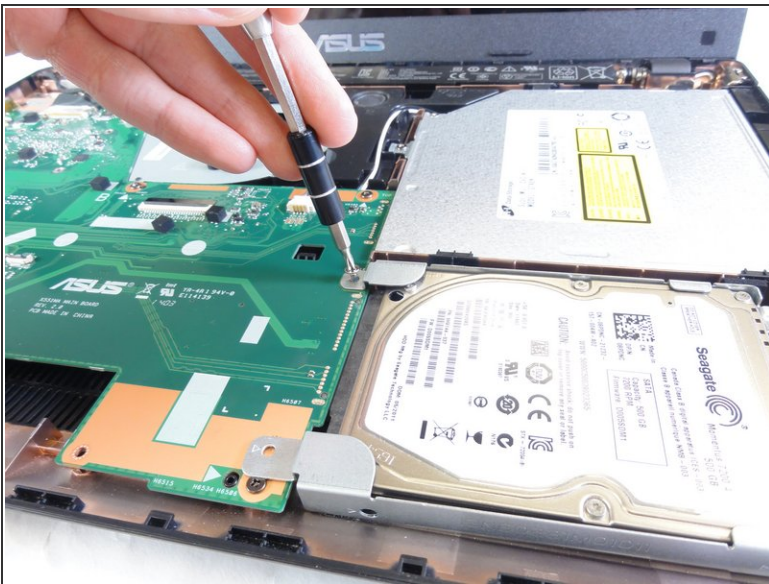
- Remove each data cable from the motherboard by using your finger or the black spudger to lift the black latch.
- The cable will slide out of its place.

## Step 5



- With the data cables removed and the keyboard module fully disconnected, the keyboard module should come free from the laptop.

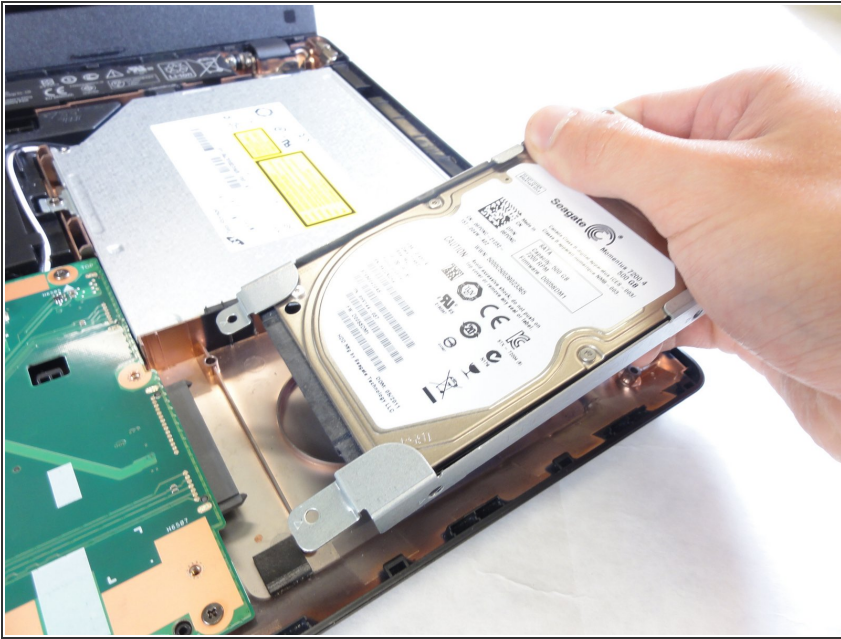
## Step 6 — Hard Drive



- Remove the four screws that hold the hard drive in place with the Philips #1 screwdriver.
- ⓘ There are two screws connected to the motherboard and two screws connected directly to the case.



## Step 7



- Remove the hard drive by sliding it to the right to disconnect it from the motherboard and lifting out.
- ⚠ Be sure to fully disconnect the hard drive from the motherboard to ensure that you do not damage the connectors.
- ℹ If necessary, unscrew the old hard drive from the holster and screw the new one into the holster.

To reassemble your device, follow these instructions in reverse order.