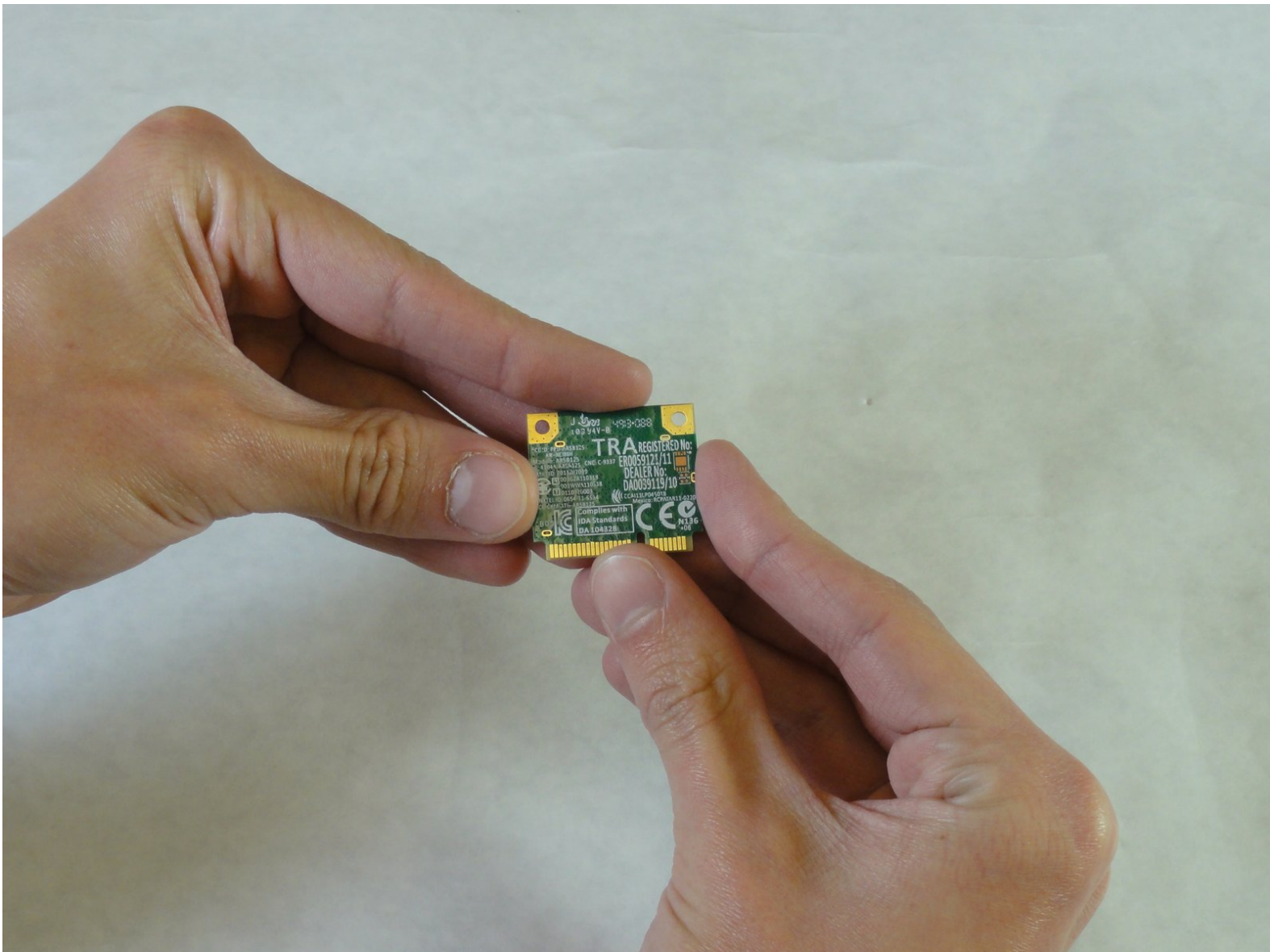




ASUS D550MA-DS01 Wireless Network Card Replacement

If your laptop is having trouble connecting to any WiFi networks and you need to replace the Network Interface Card (NIC), then this guide is for you!

Written By: Richard Johnson



INTRODUCTION

Wireless Network Interface Cards (NIC) allow your laptop to connect to WiFi networks. Over time, they may become damaged by heat or become outpaced by newer networks. Replacing the NIC is a simple procedure that can save you from scrapping your laptop!



TOOLS:

- [Phillips #1 Screwdriver](#) (1)
 - [Spudger](#) (1)
-

Step 1 — Keyboard Module



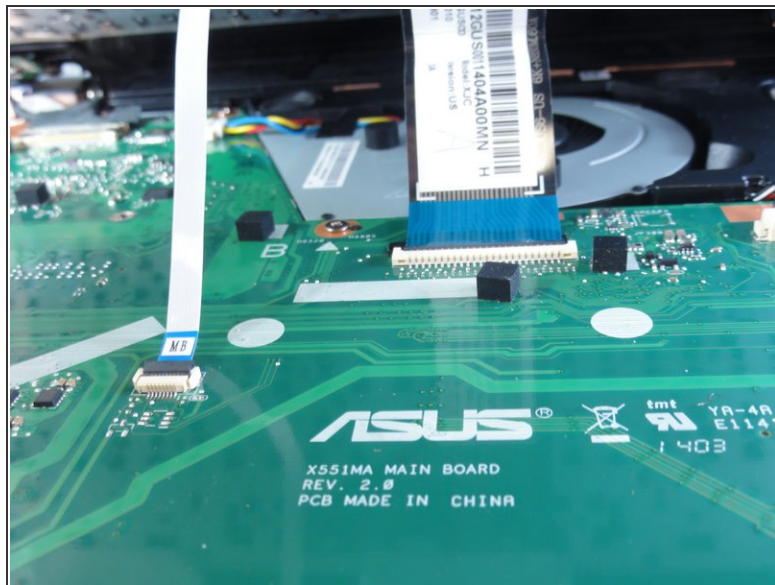
- Use the Philips #1 Screwdriver to remove the 9 screws that hold the keyboard cover in place.

Step 2



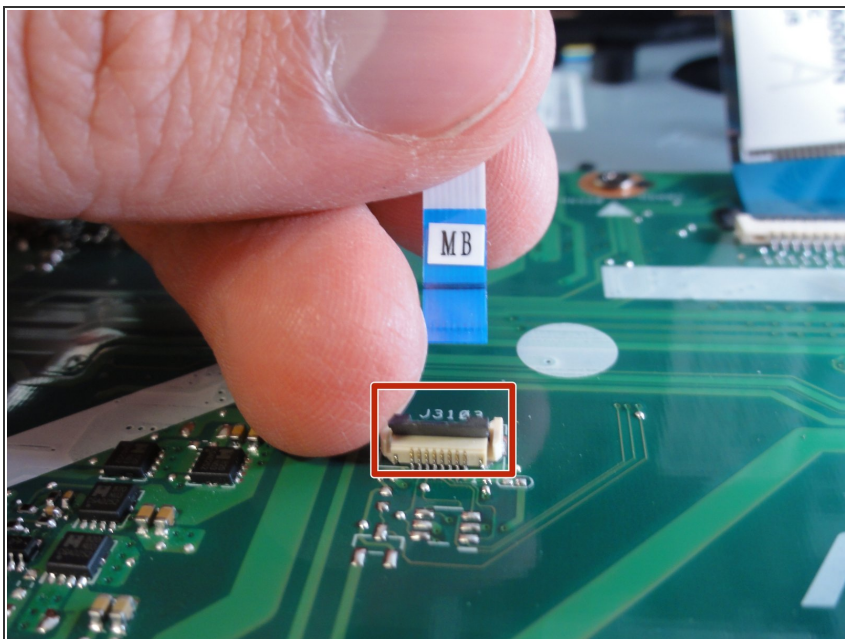
- Insert the flat edge of the spudger into the crease of the keyboard cover.
 - While the spudger is in the crease, carefully pry open the casing by sliding the spudger along the edge.
- ⚠ Do not use excessive force to pry open the lid. You should hear each plastic clip snap open as you run the spudger along the edge.

Step 3



- Make sure that the entire cover has been released from the plastic pins.
- Slowly lift the cover open from the front of the laptop, but do not completely remove.
- Note the locations of the 3 white and blue data cables connecting to the keyboard to the computer's main board.

Step 4



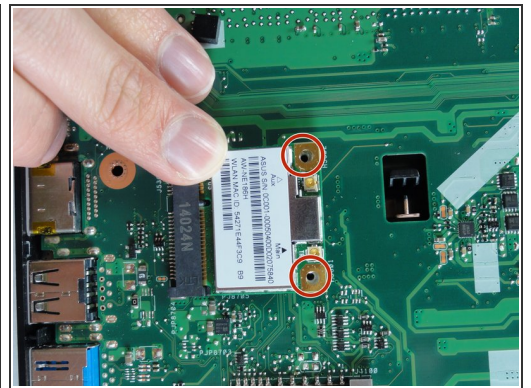
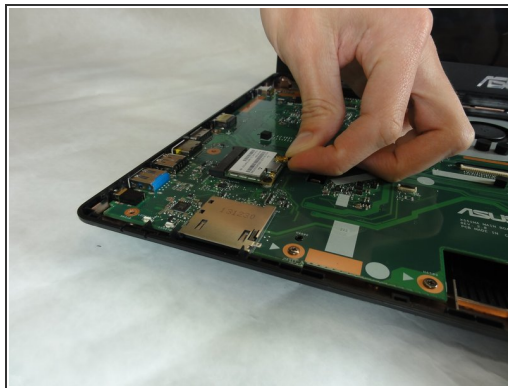
- Remove each data cable from the motherboard by using your finger or the black spudger to lift the black latch.
- The cable will slide out of its place.

Step 5



- With the data cables removed and the keyboard module fully disconnected, the keyboard module should come free from the laptop.

Step 6 — Wireless Network Card



- Locate the Network Interface Card (NIC) on the motherboard.
- ⓘ Note the orientation of the white and black wires on your NIC. The may connection differ from the picture.
- Gently disconnect the white and black wires by pulling it off of the NIC card. These wires should come off easy.
- ⓘ If you are following these steps for the prerequisite to remove the motherboard, you do not need to completely remove the NIC. Just remove the wires. The proceeding step can be skipped.

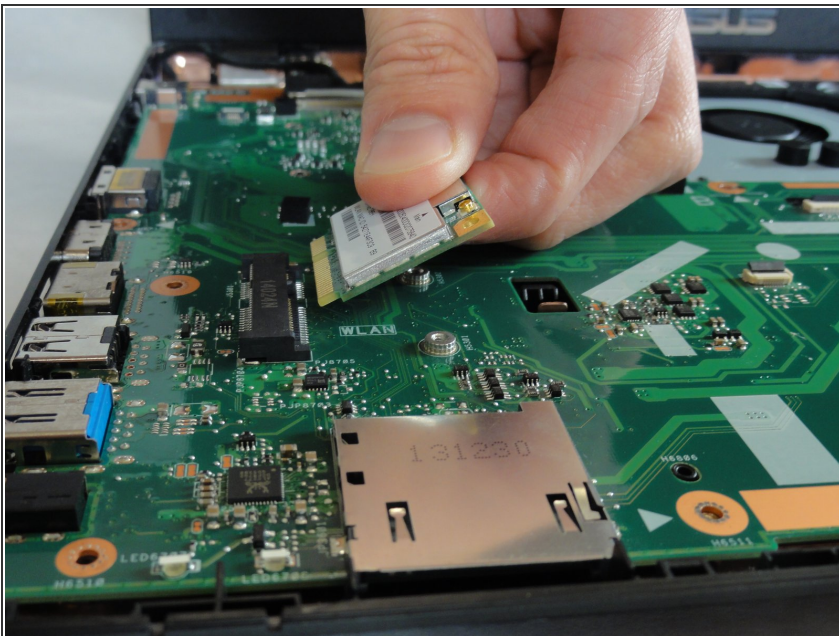
Step 7



- Remove the screws that are holding down the wireless network card with the Phillips #1 screwdriver.

i After removing the screws, the NIC will lift up in a spring action.

Step 8



- Gently pull out the NIC.

! Do not use excessive force or wiggle the card out. The NIC should slide out easily.

To reassemble your device, follow these instructions in reverse order.