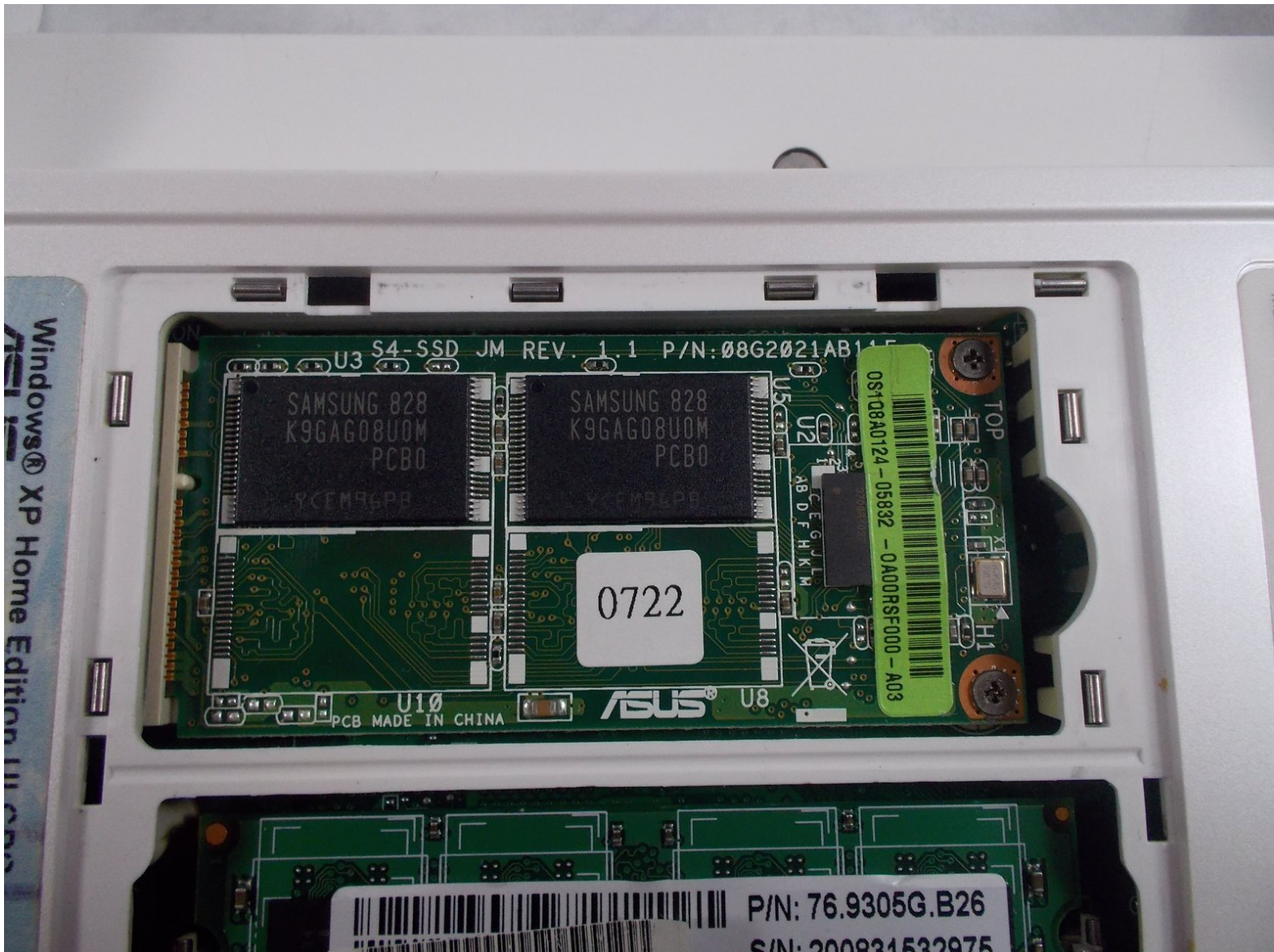




ASUS EEE PC701SD-WHI004X HardDrive/SSD Replacement

A hard drive replacement guide for the ASUS EEE PC701SD-WHI0004X

Written By: mir



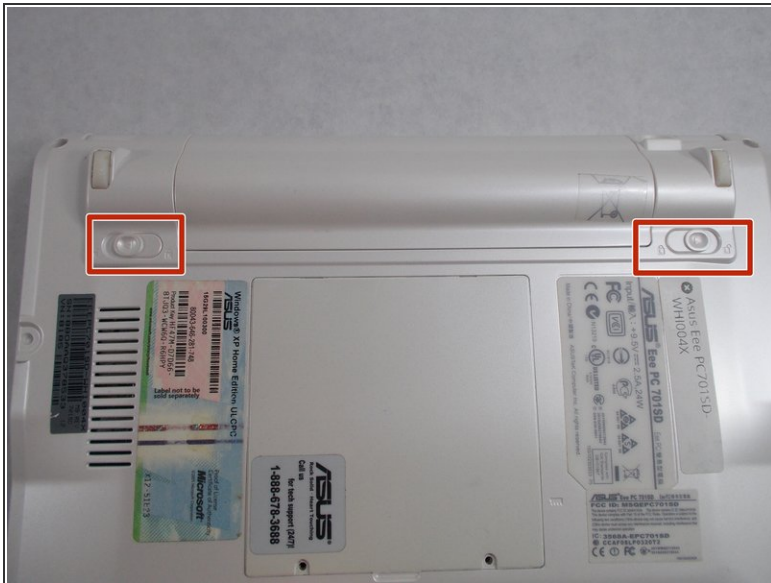
INTRODUCTION

Use this guide to replace the SSD of your ASUS EEE PC701SD-WHI004X. Be sure to disconnect the laptop from all sources of power before beginning. You should follow this guide if files are becoming corrupted, or if the Operating System won't load when turning on your PC.

TOOLS:

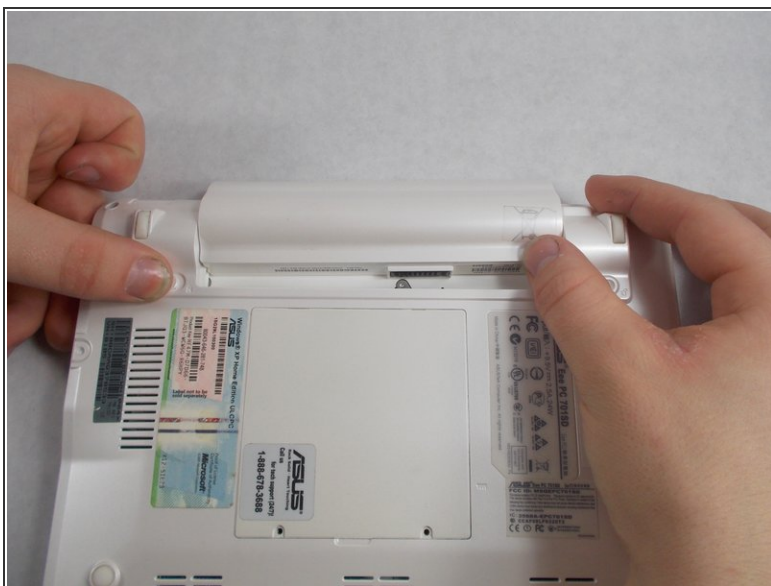
- [Phillips #0 Screwdriver](#) (1)
 - [Phillips #1 Screwdriver](#) (1)
-

Step 1 — Battery



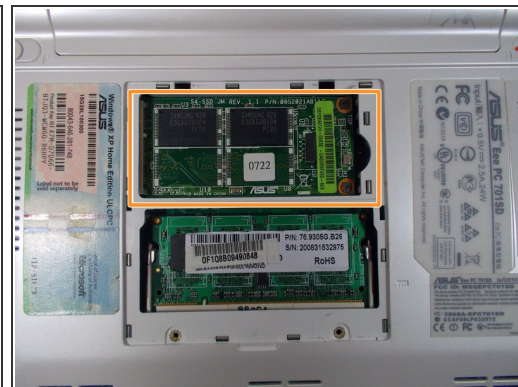
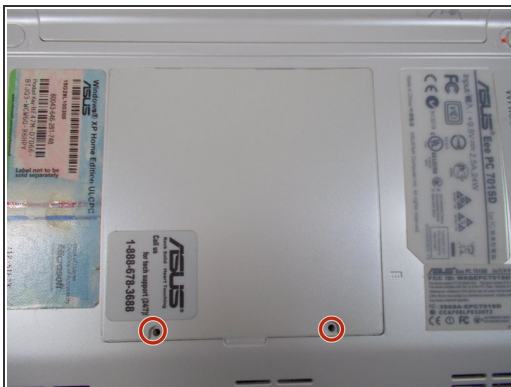
- Flip the laptop over, you should see two battery tabs.
- Slide the right tab towards the right. The orange dot should be visible. This tab will be locked open.

Step 2



- While holding the left tab towards the left. Gently slide the battery out of the laptop.

Step 3 — SSD



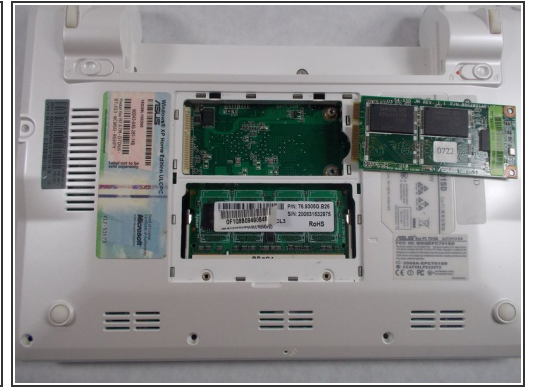
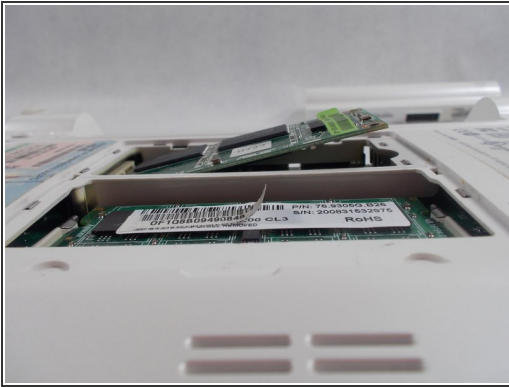
- Remove the two 2.5mm Phillips #1 screws.
- Gently remove back panel by lifting the tab. This will expose the SSD.

Step 4



- Unscrew the two 2.0mm Phillips #0 screws.

Step 5



- The SSD should now pop up.
- Grasping the sides of the SSD, gently pull it out at the angle it makes with the device.